



Primech Ai

Hytron

AI Powered Toilet Cleaning Robot



www.primech.ai

Toilet Cleaning Re-imagined

Sustainable Cleaning, sanitizing and disinfecting

Self-generation of electrolysed water for effective and eco-friendly cleaning

Superior Hygiene

High precision contactless and contact-based cleaning to remove stubborn stain. Self-cleaning functions to sanitize cleaning tools after use.

Extended and Hassle-free operation

Self-charging, automated water and wastewater handling capability to enable extended and hassle-free cleaning sessions

Enhanced Safety

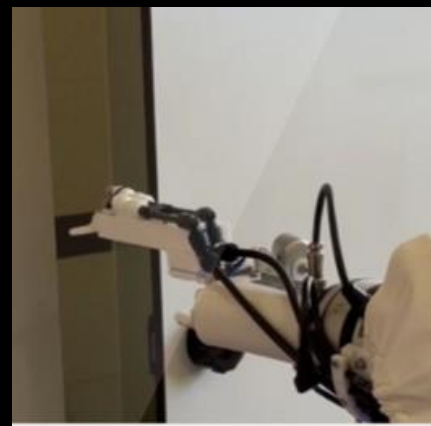
Incorporates air dryer and floor mopping functions to eliminate safety hazards from wet surfaces effectively





Primech AI

Hytron Smart Functions



Door Opening



Floor Mopping



Toilet Bowl Flushing



Surface Wiping



Navigating



Toilet Bowl Brushing



E-water Jetting



Mirror Wiping



Self Charging +
Water Refill/Discharge



Blower





Primech Ai

Hytron Specifications

HYTRON ROBOT

- DIMENSION (mm): 653(L)*400(W)*1412(H)
- WEIGHT (kg) :100
- MAX. SPEED (m/s) : 0.6
- AUTONOMOUS OBSTACLE AVOIDANCE : YES
- ELEVATOR RIDE: YES
- FRESH WATER TANK VOLUME (L) : 10
- WASTE WATER TANK VOLUME (L) : 5
- DETERGENT TANK VOLUME (L) : 2.5
- BATTERY LIFE (h) : 2.5
- CHARGING TIME (h) : 0.5
- SERVICE RANGE : SINK、COUNTERTOP、URINAL、TOILET BOWL、SQUAT TOILET、FLOOR、MIRROR

HYTRON DOCKING STATION

- DIMENSION(mm): 230(L)*40(W)*630(H)
- WATER SUPPLY & DISCHARGE, BATTERY CHARGING : AUTOMATIC, 20 minutes





Primech Ai

Hytron Dashboard & User App

Real-time Monitoring

Intuitive dashboard that provides real-time updates on each Hytron's status and task

Alerts and Notifications

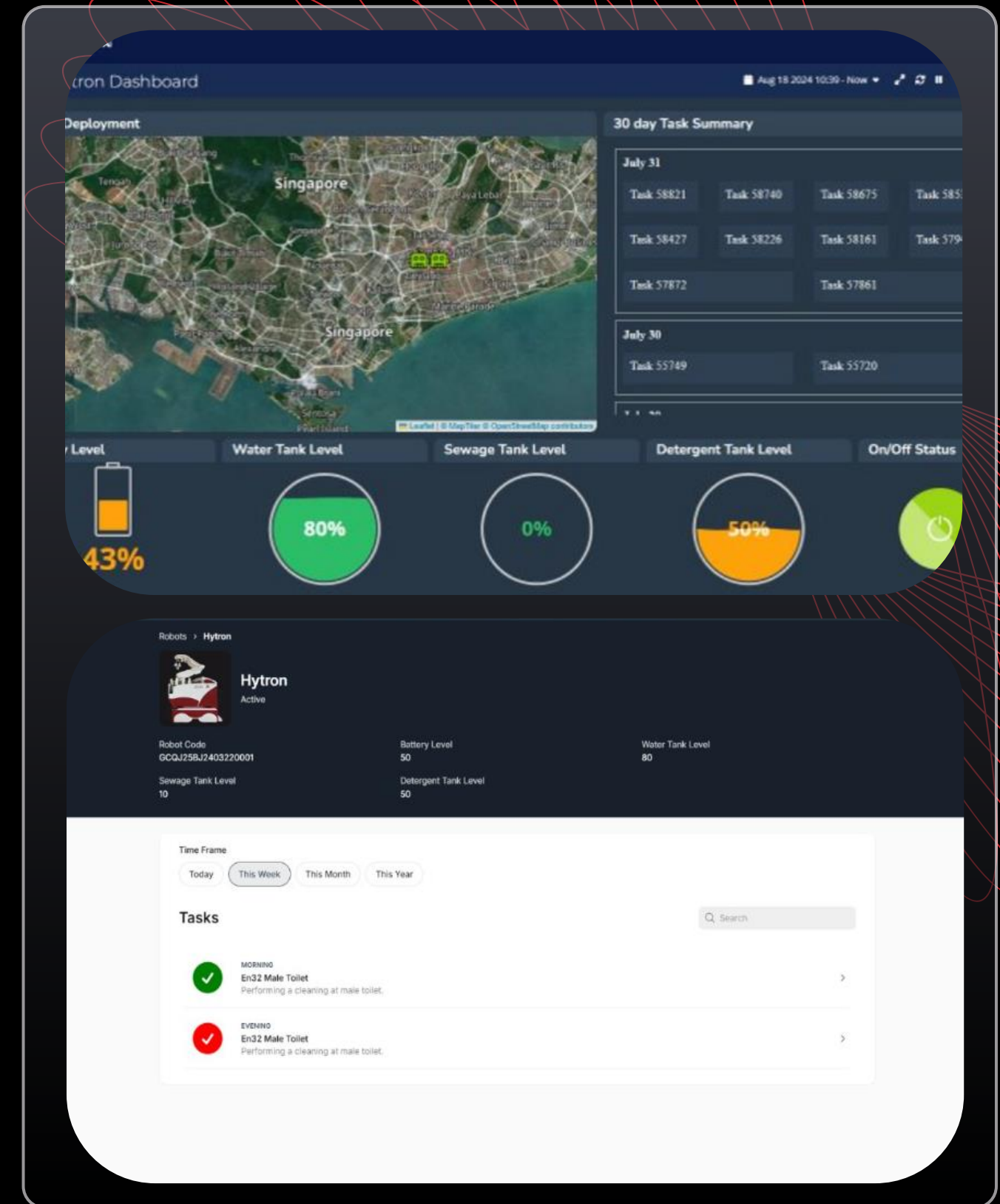
Keep on track and be updated with each Hytron's battery level, water tank level and be notified when there's a need to address any potential issue

Task Management

Track the status of individual tasks for each Hytron robot across different locations, with real-time updates on whether tasks are completed or pending

Data Analytics

Integrates with IoT & Building Management System





Primech Ai

Recommended Daily Cleaning Schedule

Toilet 1	Toilet 2	Charging	Toilet 3	Toilet 4	Charging
0700-0745	0745-0830	0830-0900 Charging	0900-0945	0945-1030	1030-1100 Charging
1100-1145	1145-1230	1230-1300 Charging	1300-1345	1345-1430	1430-1500 Charging
1500-1545	1545-1630	1630-1700 Charging	1700-1745	1745-1830	1830-1900 Charging
1700-1745	1745-1830	1830-1900 Charging	1900-1945	1945-2030	2030-2100 Charging

Reference Toilet (Bathroom): 4 cubicles, 3 urinals and 2 wash basins
Cleaning ratio of 1 robot : 4 toilets



Airport Hospitals Hotels Schools Malls Commercial Buildings



Primech Ai

Performance & Productivity



01 Precision

Autonomously navigates and clean toilet fixtures down to less than one millimeter accuracy

02 Adaptable

Integration of 3D technologies and smart sensors enabling it to adapt and respond to the nuances of different cleaning environment

03 Effective

Touch-based cleaning allows removal of stubborn stains effectively

04 Sustainable

Low noise pollution and minimal power and water consumption

Hytron's advanced technology ensures enhanced cleaning efficiency, reduced operational costs, and provides unparalleled cleanliness in various commercial spaces.



Primech AI



**Get Ready for
the Future.**