

A faded, light gray world map serves as the background for the entire slide. The map is centered, showing the continents of North America, South America, Europe, Africa, and Asia. The text and logo are overlaid on the map.

# O.M.T.

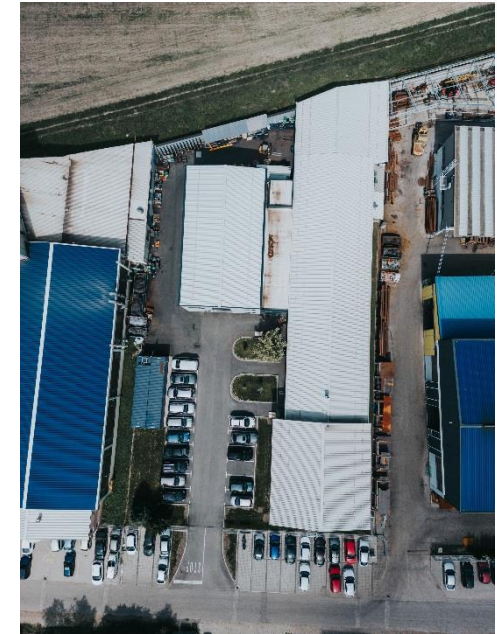


**Your ideal business partner!**

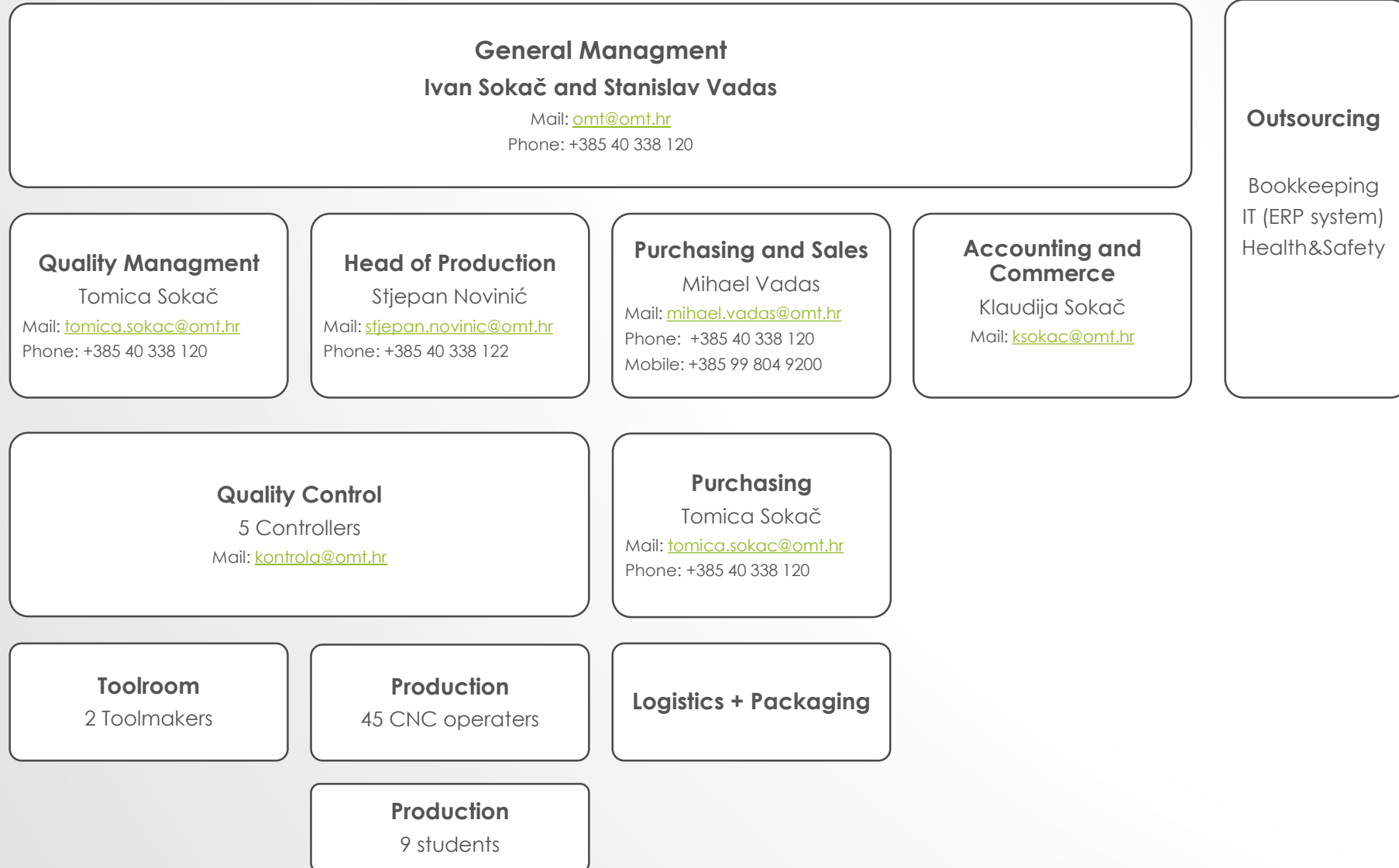
# YOUR IDEAL BUSINESS PARTNER!

With more than 26 years of experience in machining parts on CNC machines, you have found the ideal partner. Top quality, latest technology, flexibility and short delivery times are all reasons to choose O.M.T.

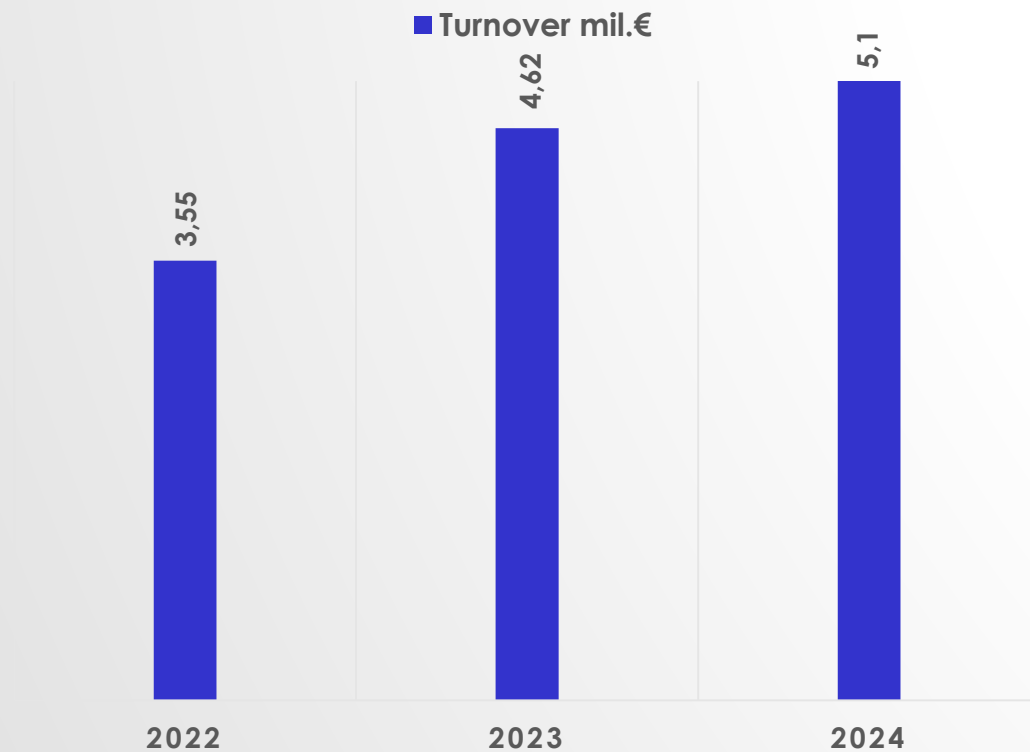
- Year of foundation: 1997.
- 2 owners: Ivan Sokač and Stanislav Vadas
- Production ~2000 m<sup>2</sup>
- 60 employees + 9 students
- Work in 2 shifts
- 32 CNC machines
- >9.000 products
- Expected Turnover in 2025. ~ 5-5,5 mil.€



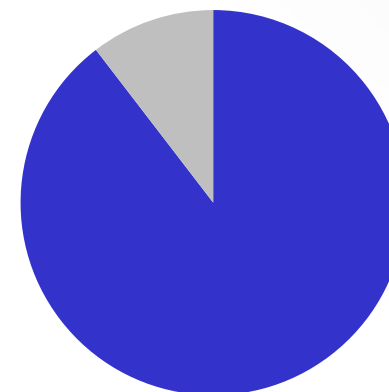
# O.M.T. ORGANIGRAM



# TOTAL TURNOVER



## Sales in 2024



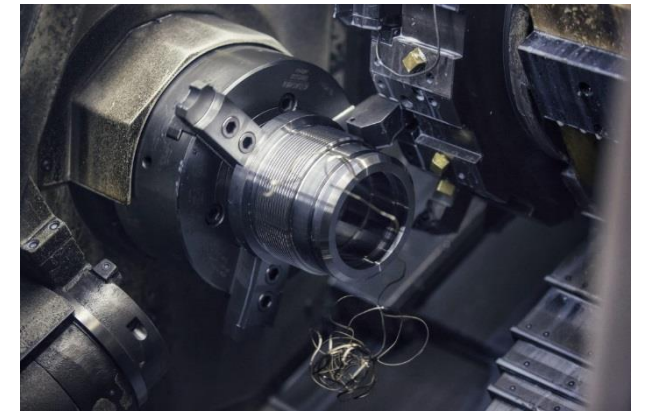
■ Sales in Europe 89,58 %    ■ Sales in Croatia 10,42 %

Export: Austria, Germany, Switzerland, France, Czech Republic, Slovenia, Belgium



# SERVICES:

MILLING  
TURNING  
CUTTING  
DRILLING  
GRINDING  
ASSEMBLY  
BROWNING  
WELDING  
HEAT TREATMENT  
SURFACE TREATMENT  
LASER MARKING



In collaboration with our suppliers in Croatia and abroad, we offer various types of surface treatments for parts produced in O.M.T. We can organize any type of surface treatment, but the most common ones are:

### Heat treatment

- Hardening
- Nitriding
- Plasma Nitriding
- Cementation
- Normalization
- Nitrocarburizing
- Oxidation
- Carbonitriding
- Induction hardening
- Laser hardening

### Surface treatment

- Browning
- Anodizing
- Hard anodizing
- Galvanizing
- Phosphating
- Nickel plating
- Painting
- Powder coating
- Silver plate
- Zinc flake

### Special coating

- HVOF
- ID-HVOF
- Air Plasma Spray (APS)
- Flame wire
- Arc spray
- Cold spray

# OUR MACHINES

Our main business is metal machining and we are equipped with all the necessary machines and equipment:

**11** **CNC MILLING CENTERS**  
4 axis ▪ 3 axis

**2** **HORIZONTAL MILLING CENTERS**  
4 axis with 2 paletts

**8** **5x MILLING CENTERS**  
5 axis ▪ 3+2 axis ▪ 5 axis with 6 pallets

**10** **CNC LATHES**  
Horizontal ▪ Turn-Mill ▪ Single spindle ▪ Counter spindle

**2** **GRINDING MACHINES**  
Flat ▪ Diameter ▪ Parallel ▪ Tolls

**2** **CNC SLOTING MACHINES**  
Through slots ▪ Blind slots ▪ Conical Slots ▪ Spiral slots

**2** **PRESS**  
Hydraulic press ▪ 160t

**3** **CUTING MACHINES**  
CNC ▪ Diameter ▪ Square ▪ 460 mm

**1** **SANDBLASTING MACHINES**

**1** **LASER MARKING MACHINES**  
Text ▪ Pictures ▪ Barcode ▪ QR code



# MILLING

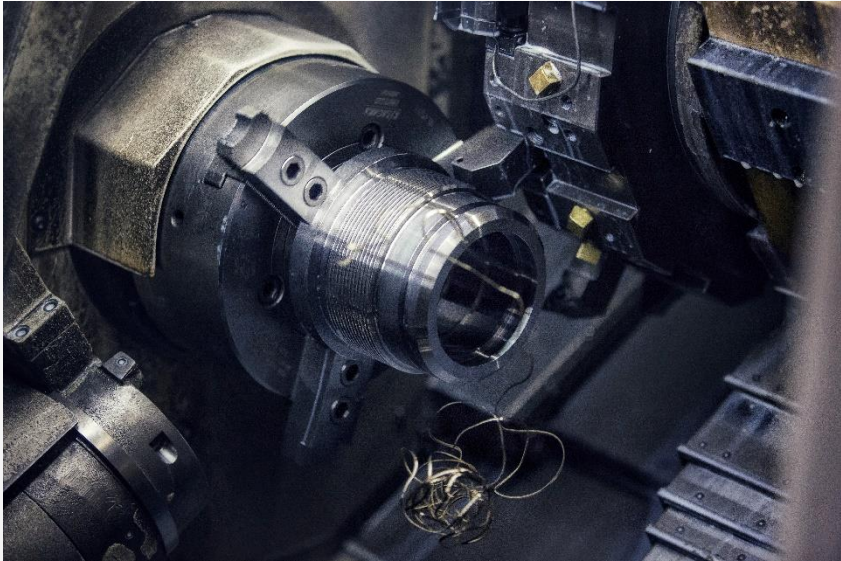
Max. 2000x800x850 mm

Milling operations are performed on 19 modern CNC machining centers of renowned manufacturers such as DMG MORI, Mazak, Mori Seiki, Haas, Bridgeport, Quaser, Microcut, Leadwell, Hitachi Seiki etc. We are able to perform operations on 3, 4 and 5 vertical and horizontal machining centers.

VERTICAL MACHINES	X/Y/Z axis[mm]	Axis	Year
DOOSAN DNM 750II	1630x762x650	3 axis	2022.
HAAS VF2SS	762x406x508	4 axis	2018.
HAAS VF2SS	762x406x508	4 axis	2017.
LEADWELL V50-L	1270x635x610	3 axis	2016.
QUASER MV154E	762x530x560	3 axis	2016.
MICROCUT V22	1000x560x550	3 axis	2015.
HAAS VF3	1016x508x635	3 axis	2008.
HAAS VF3	1016x508x635	3 axis	2008.
BRIDGEPORT VMC600	610x410x520	3 axis	1998.
BRIDGEPORT VMC600	610x410x520	3 axis	1998.
EMCO	1600x600x600	3 axis	2011.

HORIZONTAL AND 5-AXIS MACHINING CENTRES			
DMG MORI DMU 50+PH150	650x520x475 with 6 pallets	5 axis	2024.
DMG MORI NHX 5000	730x730x880 with 2 pallets	4 axis	2024.
DMG MORI DMF 200/8	2000x800x850	5 axis	2023.
DMG MORI CMX 50U	500x450x400	5 axis	2022.
DMG MORI CMX 50U	500x450x400	5 axis	2022.
DMG MORI CMX 50U	500x450x400	5 axis	2021.
DMG MORI CMX 70U	750x600x520	5 axis	2022.
MORI SEIKI SH-50	630x600x650	5 axis	1995.
MORI SEIKI SH-50	630x600x650	5 axis	1995.
HITACHI SEIKI HG400III	560x580x519 with 2 pallets	4 axis	1995.





# TURNING

Max. Ø 480 x 1280 mm

We can turning in dimensions Ø480×1280 mm on machines of renowned manufacturers such as DMG MORI, Mazak, Okuma, Ernauld-Toyoda, and the like.

CNC Lathes	Diameter [mm]	Length [mm]	C axis Y axis
DMG MORI CLX 450 TC	Ø 400	1100	Turn-Mill
DMG MORI CTX ALPHA 500	Ø 240	500	C, Y
DMG MORI NEF 400	Ø 385	800	C
DMG MORI CLX 550	Ø 480	1280	C
DMG MORI CLX 450	Ø 420	800	C
MAZAK QTS 200	Ø 350	500	-
MAZAK Q25	Ø 400	750	-
ERNAULD-TOYODA ES54	Ø 450	1000	C
OKUMA LR15	Ø 300	500	-
QUICKTECH XP-20S	Ø 42	Bar feeder 3m	C,Y



## NEW MACHINES INSTALLED IN 2021.-2024.



### DMG MORI CTX ALPHA 500

Turning center with driven tools

Max. turning diameter	Ø 240 mm
Max. work piece length	500 mm
No. of driven tools	12
C and Y axis	



### DMG MORI CMX 50U

5 axis machine

Max. X travels	500 mm
Max. Y travels	450 mm
Max. Z travels	400 mm
Table diameter	630 mm
Tool magazine	30



### DMG MORI NEF 400

Turning center with driven tools

Max. turning diameter	Ø 385 mm
Max. work piece length	800 mm
No. of driven tools	6



### DMG MORI CLX 550

Turning center with driven tools

Max. turning diameter	Ø 480 mm
Max. work piece length	1280 mm
No. of driven tools	12

# NEW MACHINES INSTALLED IN 2021.- 2024.



**DMG MORI CLX 450**  
Turning center with driven tools

Max. turning diameter	Ø 430 mm
Max. work piece length	1280 mm
No. of driven tools	12



**DMG MORI CMX 50U**  
5 axis machine

Max. X travels	500 mm
Max. Y travels	450 mm
Max. Z travels	400 mm
Table diameter	630 mm
Tool magazine	60



**DMG MORI CMX 50U**  
5 axis machine

Max. X travels	500 mm
Max. Y travels	450 mm
Max. Z travels	400 mm
Table diameter	630 mm
Tool magazine	30



**DMG MORI CMX 70U**  
5 axis machine

Max. X travels	750 mm
Max. Y travels	600 mm
Max. Z travels	520 mm
Table diameter	630 mm
Tool magazine	30

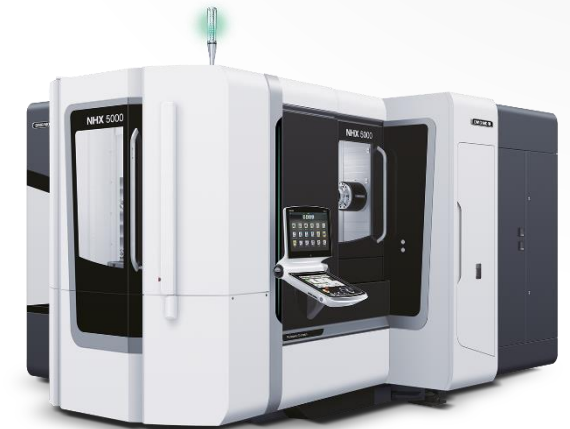
# PLAN FOR 2024

## INVESTMENTS IN SHOP FLOOR

- New production and storage space (~ 500 m2)
- Solar power plant 200 kw

## INVESTMENTS IN NEW MACHINES

- 1 machines for 5 axis processing + automation  
DMG MORI DMU 50 + PH 150  
5 axis machine with palet system (6 palets) for serial production
- 1 horizontal 4 axis machine  
DMG MORI NHX 5000  
4 axis machine with 2 palets for high serial production
- 1 turn-mill machines  
DMG MORI CLX 450 TC with 2 spindle and miling head for serial production



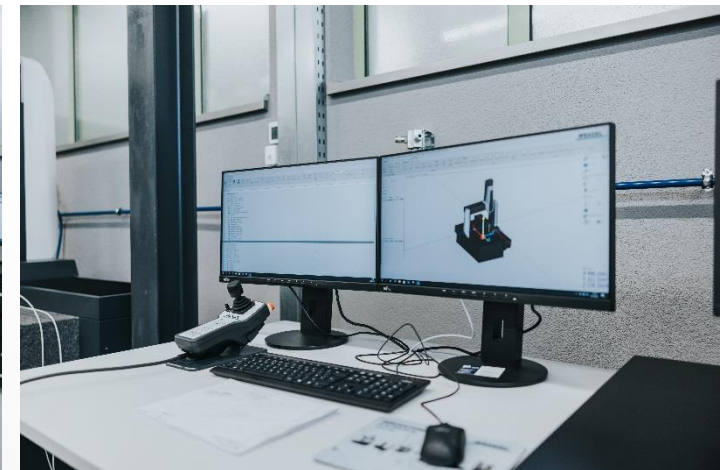
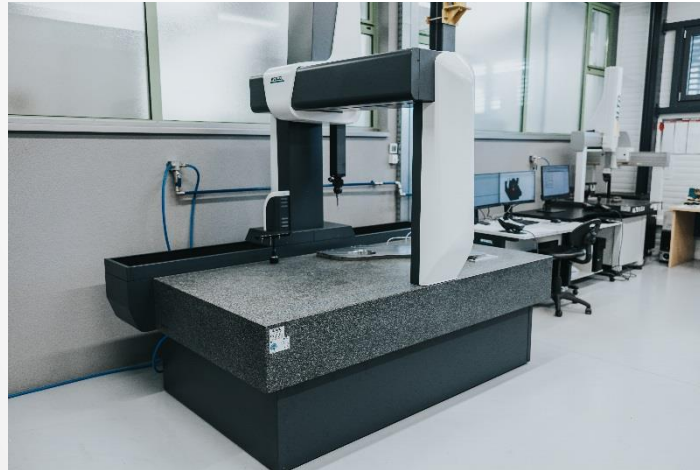


# „QUALITY IS OUR PRODUCTS“

To ensure the highest quality of our products, we equipped our measuring laboratory with the most modern measuring instruments in the air-conditioned space.

We can provide:

- **Measurement protocol**
- **Certificate of material**
- **Hardness certificate**
- **Thickness certificate**
- **NDT inspection**



# WENZEL LH 87

The measuring laboratory is equipped with the latest 3D coordinate table **WENZEL LH87**, with a motorized **head Renishaw PH10**. The dimensions of measurements are **1600x800x700** mm and the accuracy of the measurement is up to **0.003** mm. CMM Manager is used to manage the device, and the measurements can be manual or automatic through the step file.

Year of manufacture	<b>2022.</b>
Software	<b>QUARTIS</b>
Measuring area X/Y/Z [mm]	<b>1600x800x700</b>
Measuring probes	<b>Renishaw PH10</b>





# NIKON ALTO 6.5.4.

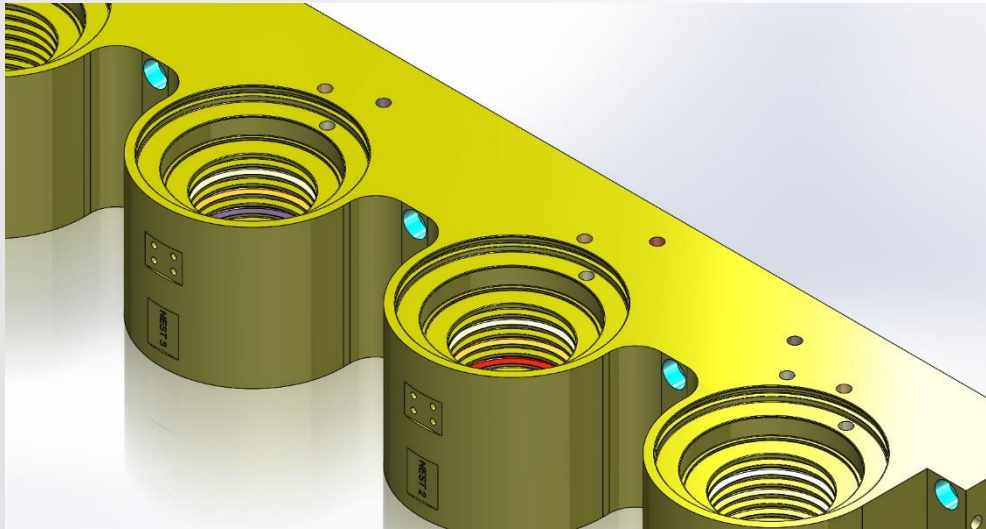
The measuring laboratory is equipped with the latest 3D coordinate table NIKON Alto 6.5.4. with a motorized **5 axis head Renishaw PH20**. The dimensions of measurements are **600x500x400** mm and the accuracy of the measurement is up to **0.003** mm. CMM Manager is used to manage the device, and the measurements can be manual or automatic through the step file.

Year of manufacture	<b>2018.</b>
Software	<b>CMM Manager</b>
Measuring area X/Y/Z [mm]	<b>600x500x400</b>
Measuring probes	<b>Renishaw PH20</b>

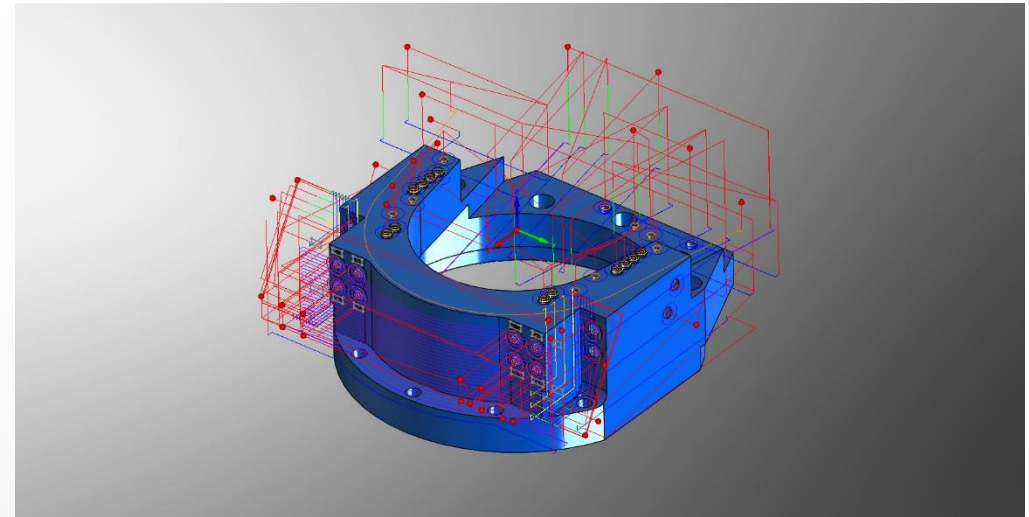


# PROGRAMMING THE MACHINES

Successful CNC production can't be imagined without CAD-CAM technology. Software, our experienced CAD-CAM specialists and cutting-edge milling centres guarantee extreme precision and realize even the most complex requirement in the shortest possible time frame.



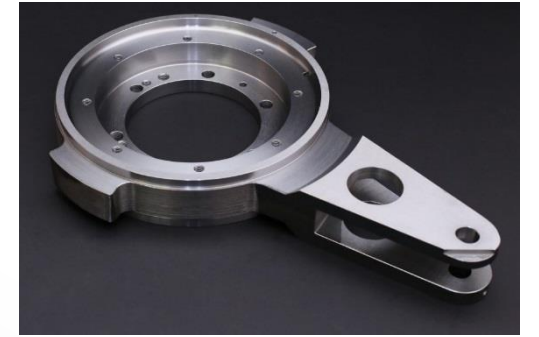
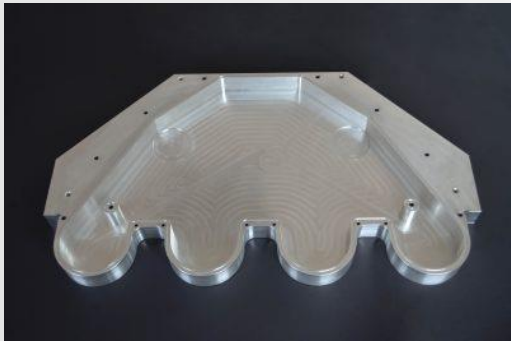
**SOLIDWORKS**



**SOLIDCAM**

# PRODUCTION PROGRAM:

- Parts of construction machinery
- Parts of hydraulic cylinders
- Parts for trains and trams
- Parts for the printing industry
- Parts for the process-energy industry
- Parts of machines for the production of automotive tires
- Parts of dedicated CNC machines for the automotive industry



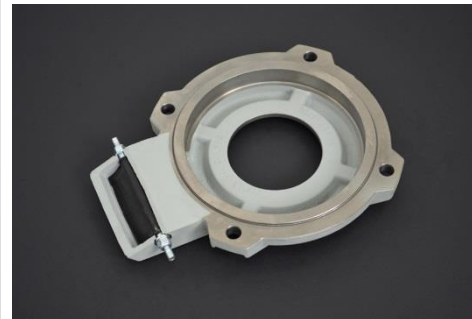
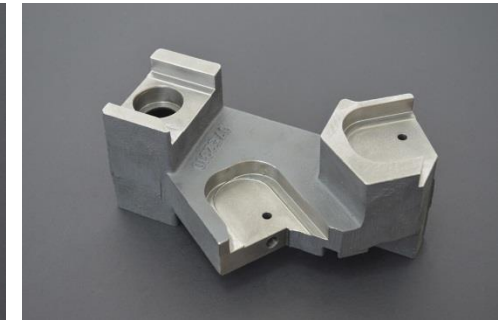
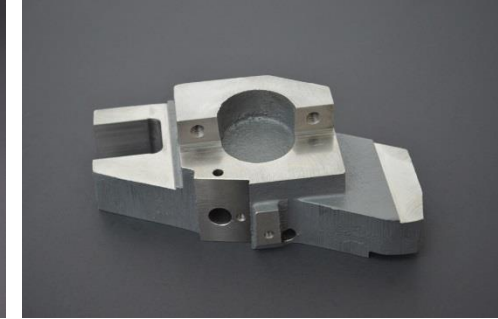
# PARTS OF GRAY CAST IRON

We have a great experience in producing cast iron parts.

For our customer we produce more than **150 different positions**.

We can offer you a complete process:

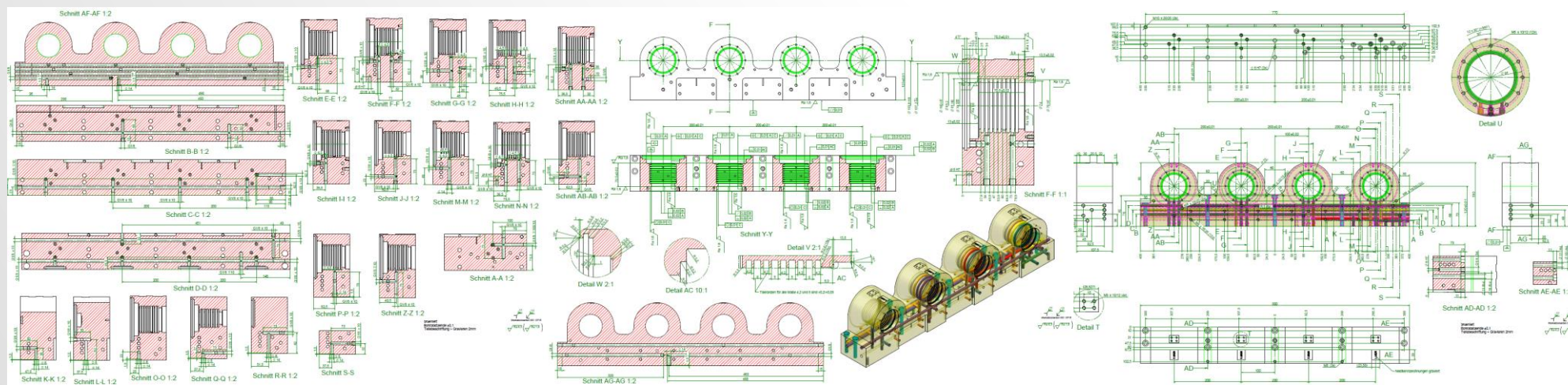
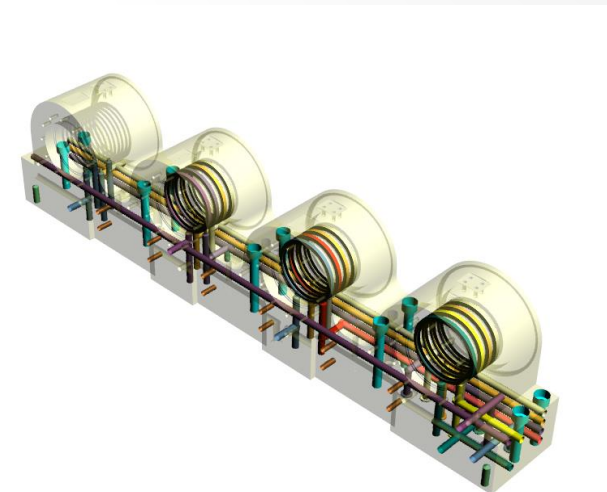
- Casting
- Construction of clamping devices
- Machine processing





# WE PRODUCE COMPLEX PARTS

Dimension: 800x107.5x190 mm  
Drilling deep holes L=800 mm  
Material: 1.1730 (C45W)  
Weight: 75,1 kg  
Surface treatment: Browning





# OUR PRODUCTS

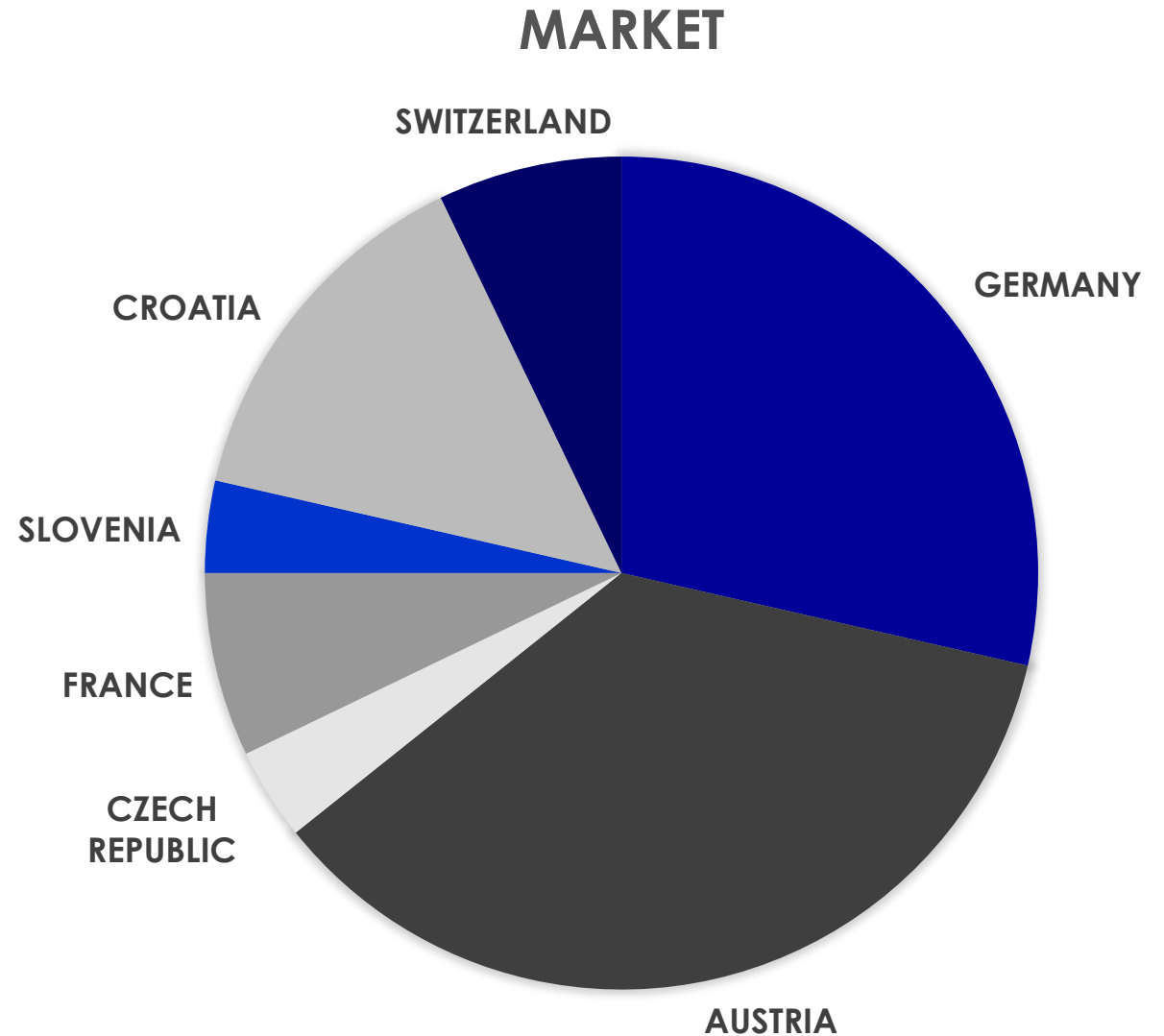
are installed in the most modern machines and appliances on the market that are widespread worldwide.





# OUR CUSTOMERS

- TRUMPF Maschinen Austria GmbH&Co KG
- TRUMPF Werkzeugmaschinen Teningen GmbH
- TRUMPF Liberec, spol. s.r.o.
- MANROLAND Sheetfed GmbH
- Koenig & Bauer Digital & Webfed AG & Co.KG
- Koenig & Bauer Grafitec s.r.o.
- Koenig & Bauer NotaSys AG & Co. KG
- Koenig & Bauer Sheetfed AG & Co. KG
- SIEMENS MOBILITY AUSTRIA GmbH
- BOBST LYON SAS
- BOBST MEX SA
- CONTINENTAL REIFEN DEUTSCHLAND GmbH
- HOERBIGER WIEN GmbH
- J.Zimmer Maschinenbau GmbH
- ANGER Machining GmbH
- MAPLAN GmbH
- IBS Austria GmbH
- ALPINE METAL TECH GmbH
- MÜLLER MARTINI AG
- CONSEL GROUP AG



# CERTIFICATES AND AWARDS

The production process is fully in line with European standards and requirements of ISO 9001:2015.

Implemented standard:  
2014. – ISO9001:2008.  
2017. – ISO9001:2015.  
2024. – ESG  
2024. - ecoVadis



ecovadis



## CERTIFICATE

Management system as per  
**ISO 9001 : 2015**

The Certification Body TÜV NORD CERT GmbH hereby confirms as a result of the audit, assessment and certification decision according to ISO/IEC 17021-1:2015, that the organization

### O.M.T.

**OMT d.o.o.**  
**Mihovila Pavleka Miškine 22**  
**40 000 Čakovec**  
**Croatia**

operates a management system in accordance with the requirements of ISO 9001:2015 and will be assessed for conformity within the 3 year term of validity of the certificate.

Scope

**Mechanical metal processing**

Certificate Registration No. 44 100 14430092  
Audit Report No. 10020472

Valid from 2020-11-14  
Valid until 2023-11-13  
Initial certification 2014

  
Certification Body  
at TÜV NORD CERT GmbH

Zagreb, 2020-11-08

TÜV NORD CERT GmbH

Langemarckstraße 20

45141 Essen

[www.tuev-nord-cert.com](http://www.tuev-nord-cert.com)



# CERTIFICATES AND AWARDS

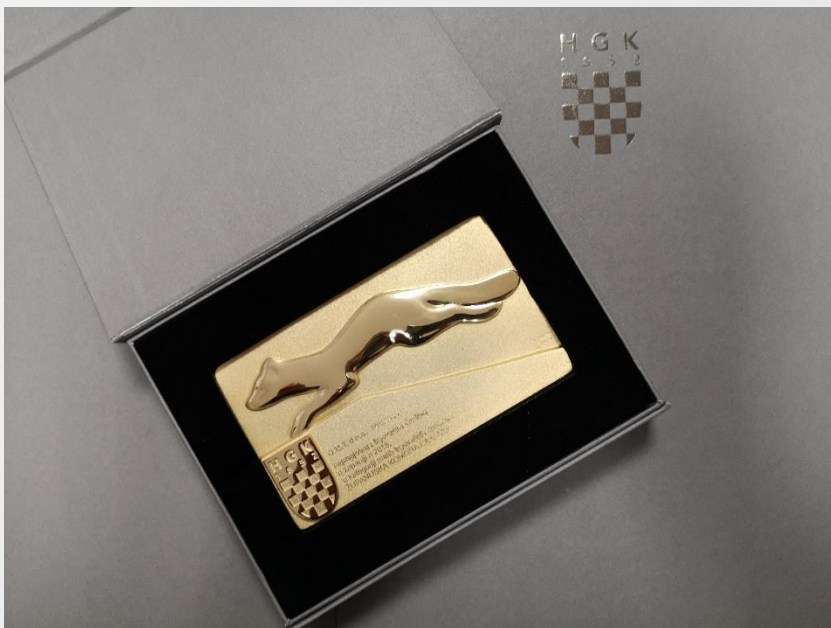
## “ZLATNA KUNA”

O.M.T. received the award for the most successful company in Međimurje County.

2018. – for small company

2022. – for medium company

2023. – for medium company



ŽUPANIJSKA KOMORA ČAKOVEC




## PLAKETA ZLATNA KUNA

O.M.T. d.o.o.  
Ivanovec

NAJUSPJEŠNIJE TRGOVAČKO DRUŠTVO U  
MEĐIMURSKOJ ŽUPANIJU U 2018.  
U KATEGORIJI MALIH TRGOVAČKIH DRUŠTAVA

U Čakovcu 28. listopada 2019.



Predsjednik  
  
Mladen Križaić

# CERTIFICATES AND AWARDS

Through 20 years of continuous development we have reached the status of a desirable partner recognized by renowned companies in the EU. Evidence of Quality and Success in Business and Responsible Leadership is the Certificate of Prudence Excellence, the internationally recognized mark of economic quality and excellence of the business entity that we get for 2015 to 2024.



Dun & Bradstreet awards a Gold Certificate of Excellence to

**O.M.T. d.o.o.**

OIB: 51891175091

The company ranks Gold in creditworthiness in Croatia.  
The company has fulfilled creditworthiness criteria AAA for 2022, 2023 and 2024  
and therefore belongs to the top Croatian companies that are allowed to use  
the Gold Creditworthiness Rating as a symbol of Credit Rating Excellence.

**Zagreb, October 1st, 2024**

A handwritten signature in blue ink, appearing to read 'Neeraj Sahai', is positioned above a horizontal line.

**Neeraj Sahai**  
President, Dun & Bradstreet International



# CONTACT

O.M.T. Ltd.

Mihovila Pavleka Miškine 22,  
40 000 Ivanovec, Croatia  
Tel: (+ 385) 40 338 120  
Fax: (+ 385) 40 338 121  
Email: [omt@omt.hr](mailto:omt@omt.hr)  
Web: [www.omt.hr](http://www.omt.hr)

Contact person:

**Mihael Vadas**  
Export Manager

BBA - Bachelor of Business  
Administration  
Mobile: +385 99 804 9200  
Communication with customers  
**Language: German, English, Dutch**

# thank you

## we hope for successful cooperation

