



CSTOUCH
ADVISORS

Uplifting Innovative Social Enterprises for Sustainable Impact

About Us

CSTouch is a Swiss-based boutique firm founded in 2007 providing management consulting and investment advisory services to innovative social enterprises, startups, MSMEs and corporates in Lebanon and the MENA region.

We support enterprises in their scale-up and transformation journeys through a wide range of advisory services including gap assessment, strategic planning, investment readiness, fundraising, risk management, corporate governance, leadership development and performance management.

Our support is tailor-made for each client's needs, challenges and strategic goals and delivered by seasoned experts with successful business track record.

We work closely with executive teams and boards through one-on-one clinics, interactive workshops, capacity building and coaching sessions.



Strategic Intent

MISSION

Empowering Social Enterprises

Our mission is to empower social enterprises through advisory, coaching and funding support needed to catalyze sustainable growth and ESG impact.

VISION

A New Economic Order Led by Social Enterprises

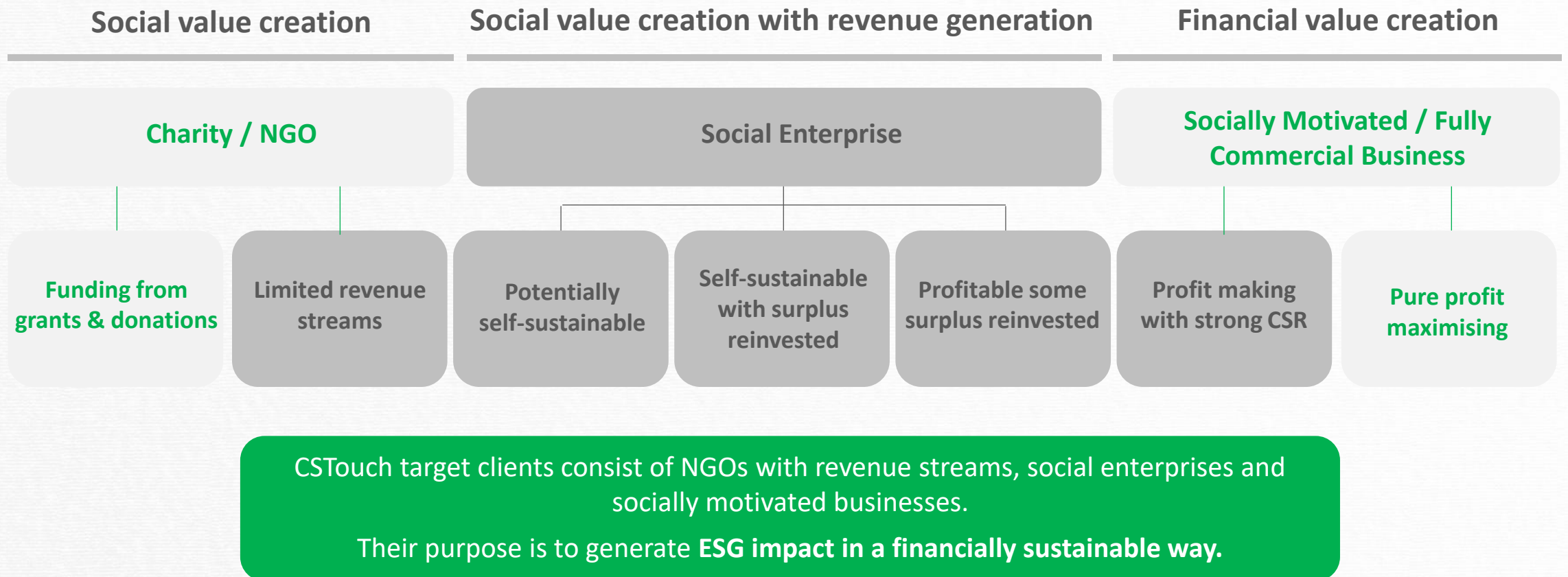
We envision a new economic order in Lebanon and emerging MENA countries, led by a thriving community of innovative social enterprises, driving profound and sustainable impact.

VALUES

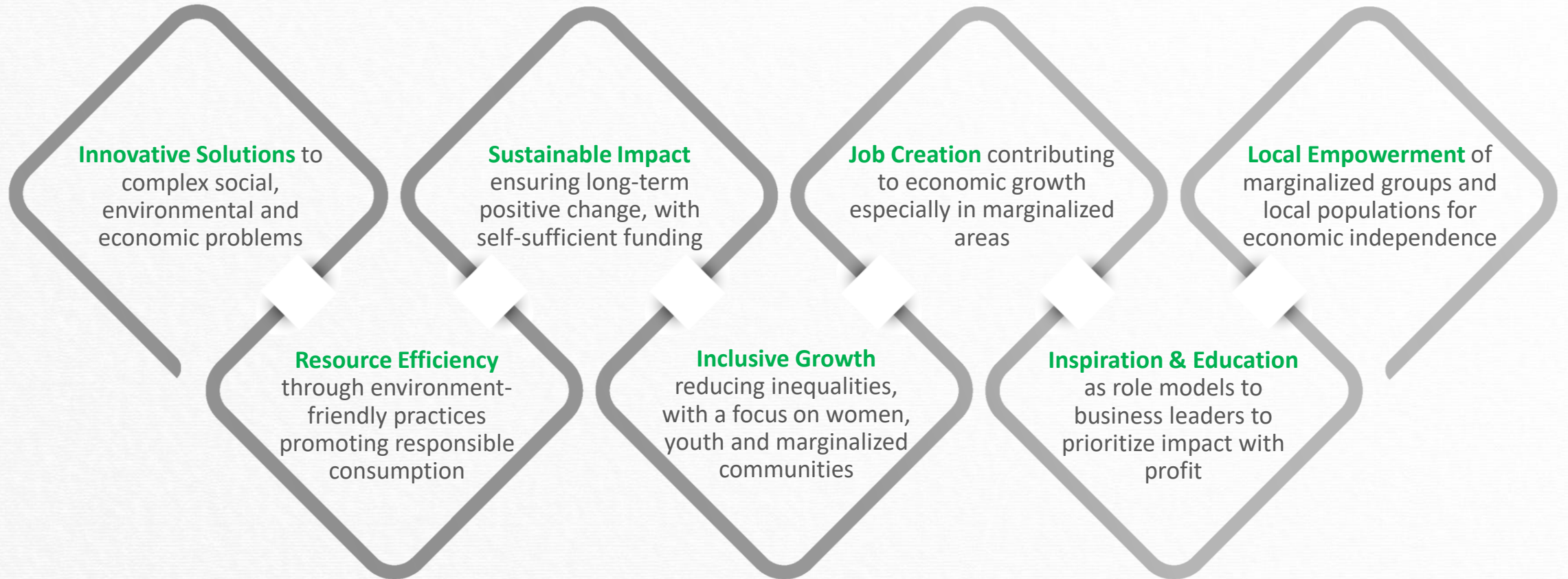
Integrity, Accountability, Excellence

At the heart of our advisory services is a profound commitment to uplift social entrepreneurs with an unyielding pledge to integrity, accountability and excellence.

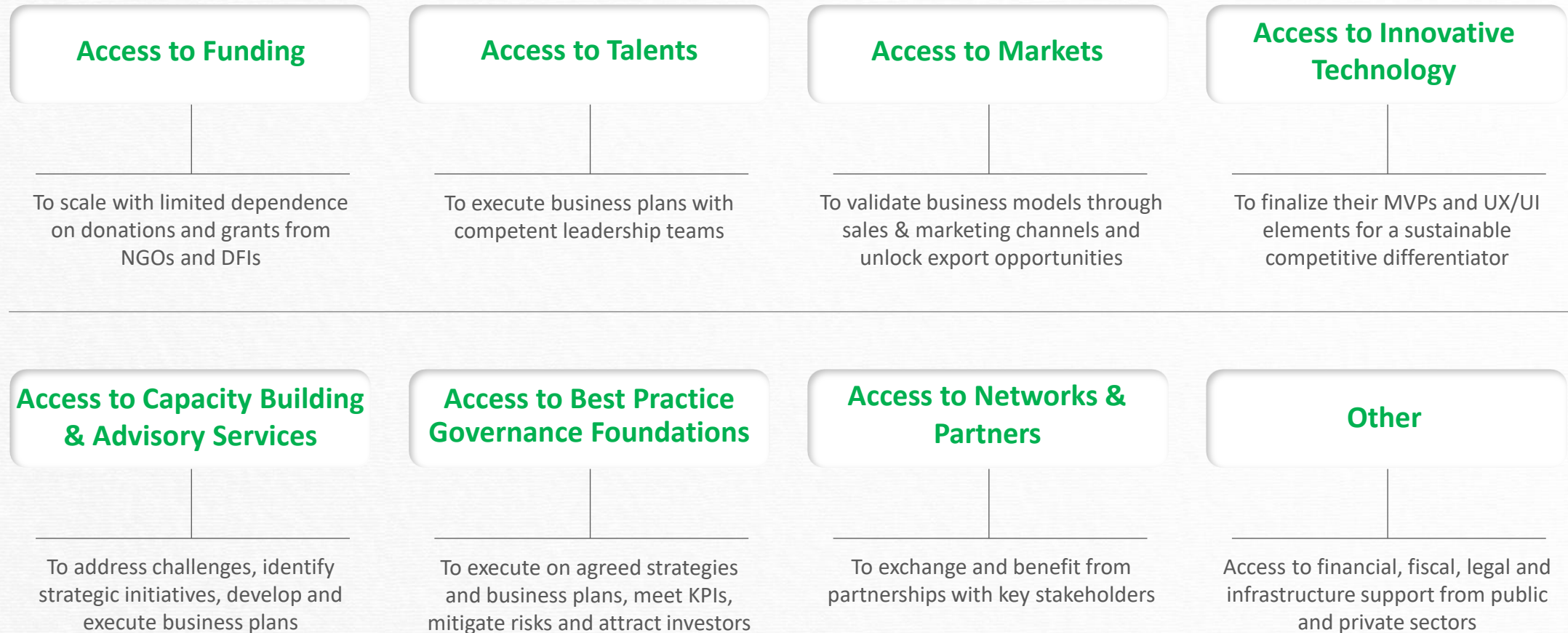
Social Enterprises on the **Value Creation** Spectrum



The Importance of Social Enterprises in **Defining a New Economic Order**



Challenges faced by Social Enterprises



Our Profile



Established
in 2007



Clients in 30+
countries



Headquartered
in Switzerland,
regional office in
Lebanon



Delivered 150+
assignments
across topics,
sectors and
growth stages

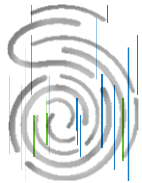


Funded and
helped raise
\$200mn+



200+ years of
combined
experience

Distinctive **Offering**



CSTouch Hands-on Approach

Focusing on execution of recommendations, actively participating in board meetings and investing in selected companies



CSTouch Transformation Framework

Designing and implementing successful transformation journeys based on tried-and-true frameworks and best-practices



Interactive, Client-Centric Methodology

Designing tailor-made solutions and engaging closely with executive teams and board members through group workshops, one-on-one clinics, coaching sessions and board meetings



Impact-Focused Practice

Selecting and supporting innovative social enterprises with high scalability potential, shared values and strong ESG impact

Our Services



Business Coaching

Leadership assessment

Personal development plan

One-on-one coaching sessions with board and leadership team



Board Advisory

Board assessment

Optimization of board dynamics

Balanced scorecard

Board & CXO performance assessment and compensation

Retention & succession planning

Building internal controls foundation

Risk management framework



Capacity Building

Gap assessment & business model validation

Strategic intent

Growth opportunities

Sales & marketing strategies

Financial budgeting

Change management & communication

Partnering with experts on specific topics



Investment Readiness Support

Gap analysis

Investment memorandum, pitch & teaser

Financial model

Company valuation

Cashflow gaps & funding needs

Optimal capital structure

Investment sources & vehicles

Data room completeness review



Funding

Due-diligence

Debt and equity investments in selected companies

Portfolio management

Board participation



Investment Brokerage

Investors mapping

Access to investor network

Organizing investment events

Due-diligence support

Term sheet negotiation

Shareholder or debt agreements support

Portfolio rationalization, private placements & joint ventures

Our Activities



- **Supporting social enterprises, scaleups and mature organizations** through their growth and transformation journeys towards financial sustainability and investment readiness. Companies we worked with over the past two years include Edrafor, OK Distribution, SEEN Platform, Made By Nature, Al Majmoua, Wakilni, Kanz and FabricAid.



- **Delivering workshops and executive programs** on financial management, budgeting and planning, sales strategy, transformation journey, investment readiness, company valuation, financial sustainability, leadership development, effective board governance, performance management, organizational culture, and risk management. Over 30 workshops delivered over the past two years with USJ, Alfanar, Flat6Labs, Anima, AUB iPark.



- **Conducting one-on-one coaching sessions** to social enterprises, startups and scaleups focusing on financial sustainability by partnering with support organizations and programs. We delivered over 200 sessions over the past 2 years in collaboration with Alfanar, Anima, Asfari foundation, Drossos, LIFE, Goethe, AUB, LAU, Bloom, Flat6Labs, makesense.



- **Investing in social enterprises** that meet our investment criteria of scalability, innovation, impact and integrity. We invested in over 20 social enterprises over the past two years including Made by Nature, Kanz, FabricAid, Elysee, Optique & Vision, CCHO, Dshop, Biocorn and Nyaho Medical Center.



- **Sitting on the board** of several companies and groups to guide the execution of their growth plans and the optimization of resources towards financial value creation. Companies include Debbane Saikali Group, ABC Group, Biomass, CCL Group, Serenity, Joissam, Volunteer Circle and Bedayati.

Selection of Projects Conducted in Collaboration with Partners (1/3)

- Embarked on the 3-year *Diaspora For Lebanon* program with LIFE Lebanon-Drosos Foundation providing capacity building workshops and coaching sessions for 10 green social enterprises in Agritech and Cleantech. Topics covered include transformation journey, investment readiness, financial management, financial forecasting and modeling, cost optimization, sales strategy, access to markets, performance management, governance and strategic reviews.



- Conducted needs assessment and coaching sessions to 4 CSOs under Asfari Foundation *Tabadol* program in collaboration with *makesense* on topics including strategic planning and mapping growth opportunities, governance, financial management & modeling and investment readiness.



- Collaborated with Alfamar on their YELA Program, supported by GIZ, where we delivered investment readiness workshops to 10 social enterprises, helping them enhance their financial strategies and prepare for potential funding opportunities.



Selection of Projects Conducted in Collaboration with Partners (2/3)

- Partnered with Anima Investment Network under the GIZ-funded *coworkup 4.0* program in Tunisia supporting 9 SSOs through workshop delivery and over 70 coaching sessions focused on growth strategies towards financial sustainability, revisiting existing business models and exploring growth opportunities.



- Partnered with Flat6Labs under the StartMashreq program across its cycles/cohorts supporting startups in Lebanon, Egypt, Jordan, Iraq and UAE through the delivery of workshops on financial management and investment readiness and the facilitation of coaching sessions.



- Partnered with Anima Investment Network under MSEC-GIZ Startup Expert Program in Morocco, supporting 13 selected startups through the delivery of workshops on investment readiness and valuation and providing group and individual coaching on strategic review, financial management & modelling and fundraising.



- Partnered with makesense under the NABAD program for Lebanese NGOs, supporting 10 green social enterprises in Education, Creative Industries and Circular Economy by identifying and prioritizing growth pillars, developing a comprehensive business plan for the chosen pillars, raising the funding required and implementing the transformation plan.



Selection of Projects Conducted in Collaboration with Partners (3/3)

- Partnered with *bloom* under the *Asfari Challenge for Social Innovation ACSI (1st, 2nd, 3rd editions)* and under the *HerMeNow programs* supporting startups from African and middle-eastern countries on their scale-up journeys.



- Conducted a series of executive programs at *USJ* in Beirut for entrepreneurs, CEOs, and managers of NGOs on corporate governance, intrapreneurship, and financial sustainability in times of crisis.



- Partnered with *GFA* under the *SEMD* program funded by the *Swiss Government* supporting over 60 SSOs and social enterprises in Lebanon, Jordan and Egypt through a combination of capacity building workshops and coaching sessions on strategic planning, financial management and sustainability.



- Partnered with *BroadPeak* on a project for *KFW* to prepare a feasibility study on the establishment of a financing mechanism to support private sector development in Lebanon and to identify the best fit given the country's socio-economic context, the needs of the SME sector, and the overarching development goals.



Selection of Projects Conducted with Clients (1/3)

Client

Company Description

Scope of Work



Made by Nature is an online platform that connects Lebanese artisans and food producers with customers, offering sustainable, locally crafted products that support well-being and heritage. Committed to eco-friendly alternatives, the company aims to make environmentally-conscious living convenient and accessible.



Supported the team in their transformation journey towards financial sustainability: mapping and prioritizing growth opportunities, preparing a robust financial model and comprehensive pitch deck, investing in them and reaching out to investors to raise funds needed to launch prioritized projects.






SEEN Platform is an ecosystem designed to support social entrepreneurship by building communities and connecting social entrepreneurs with industry experts, service providers, and both local and international organizations. It offers tailored support to meet the specific needs of social entrepreneurs.

Supported the team in identifying new revenue streams that could ensure the platform's financial sustainability and financial independence from previous funding sources and reflected that in a robust financial model and pitch deck ready to be presented to investors.

Selection of Projects Conducted with Clients (2/3)

Client	Company Description	Scope of Work
 AL MAJMOUA المجموعة	<i>Al Majmoua</i> is a Lebanese NGO that provides a range of services including microfinancing solutions, business development training, and advisory support. Al Majmoua aims to empower entrepreneurs and strengthen local businesses by providing financial resources and capacity-building initiatives.	Supported Al Majmoua in its transformation journey, highlighting core competencies, recommending mitigating actions to challenges, designing a risk management framework, designing the CEO balanced scorecard and listing future plans for next 5 years.
	<i>OK Distribution</i> is a logistics and distribution company specializing in providing tailored solutions for efficient supply chain management to small grocers. With a focus on customer satisfaction, OK Distribution offers comprehensive services including warehousing, transportation, and inventory management.	Supported the social enterprise through its scale-up journey, mapping, prioritizing and modeling revenue streams, reviewing growth assumptions, optimizing cost structure, identifying funding needs and preparing the data room.

Selection of Projects Conducted with Clients (3/3)

Client	Company Description	Scope of Work
 	<p><i>Beit El Baraka</i> is a Lebanese NGO focused on providing support to vulnerable families and individuals including food aid, medical assistance, educational support, and home improvements. It introduced <i>Kanz</i>, a community-driven social enterprise dedicated to job creation, with the mission of reviving, safeguarding and transmitting the invaluable know-how of Lebanese food producers and small-industry craftsmen/women.</p>	<p>Worked with Kanz on strategic thinking to optimize market positioning and distribution channels. Supported in mapping and prioritizing growth opportunities and initiatives, in setting up the right foundations of board governance and financial and business review, invested and helped raise close to \$200,000 in subsidized debt funding.</p>
	<p><i>CCHO (Center of Clinical, Health Economics and Outcomes Research)</i> is a data-driven, relationship-focused and patient-centric consultancy dedicated to improving healthcare in the MENA region and addressing its most critical healthcare problems using evidence-based solutions through a proprietary and unique business model.</p>	<p>Worked with CCHO on their leadership development and performance management frameworks and reviewed their pricing strategy. We continue to provide business and financial support as shareholder and debtholder and as a member of the board of directors.</p>

Selection of Companies Where We Have Invested (1/2)



CCHO (Center of Clinical, Health Economics and Outcomes Research) is a data-driven, relationship-focused and patient-centric consultancy dedicated to improving healthcare in the MENA region and addressing its most critical healthcare problems using evidence-based solutions through a proprietary and unique business model.



Made by Nature is a social enterprise that connects Lebanese artisans and food producers with customers through an online platform. The company aims to make environmentally-conscious living convenient and accessible by offering sustainable, locally crafted products that support well-being and heritage.



Bio-Corn Products EPZ Ltd, is a leading social enterprise in Kenya, specializing in converting agricultural waste, specifically corncobs, into valuable chemicals. Bio-Corn minimizes environmental impact while also contributing to the country's GDP by generating sustainable income for thousands of smallholder farmers.



Kanz is a community-driven social enterprise by Beit el Baraka, dedicated to job creation, with the mission of reviving, safeguarding and transmitting the invaluable know-how of Lebanese food producers and small-industry craftsmen/women. All profits from Kanz are directed towards financing Beit El Baraka's social mission, which focuses on assisting vulnerable populations, particularly the elderly.



Emigoh is a leading manufacturing company in the food and beverage industry, on a mission to redefine nutrition in Ghana and the West African sub-region. They offer a wide range of yoghurts, with different flavors, under their Yomi Yoga brand.



Optique et Vision (OV), a family-owned optical business in Lebanon, offers one of the first specialized vision rehabilitation centers in Lebanon, effectively serving patients with severe eye problems and vision loss. They provide premium customer service and deliver high-quality eye care with certified optometrists.



Joissam is a leading provider of potable water solutions and general civil engineering services in Ghana. The company specializes in ground research, hydrogeological drilling, and the installation of hand, submersible, and solar pumps, offering potable water to millions in rural West Africa.



FABRIC AID®

FabricAID is a Lebanese social enterprise that provides affordable clothing to underprivileged people in Lebanon and Jordan while reducing fabric waste. The organization collects clothes either from partnering NGOs or through their smart clothing collection bins.

Selection of Companies Where CSTouch Has Invested (2/2)



Dshop is a Beirut-based brand that celebrates Middle Eastern culture and heritage through a curated collection of home accessories, glassware, furniture, and lighting design. Dshop empowers local Lebanese artisans and promotes their traditional techniques and adds to it a modern twist, combining traditional craftsmanship with contemporary designs.



Wakilni is a Lebanon-based logistics service company specializing in last-mile delivery to support small businesses and strengthen community ties. They offer fast and reliable courier services across Lebanon, prioritizing personalized service and strong relationships, allowing clients to focus on their core business. They expanded to Jordan and are looking for new markets in the region.



Serenity EMR (Electronic Medical Records) is a new hospital data management system designed to merge patients' medical history into one central database to improve doctors' understanding of individual conditions as well as their decision-making to provide comprehensive quality healthcare.



InVentures is a Venture Builder providing business strategy, tech development and digital transformation services for corporates & entrepreneurs. They assist corporations in driving innovation, and digital transformation within their organizations, and entrepreneurs and startups in validating and bringing their projects to market.



Théâtre Élysée, located in Beirut, is reconfirming the city's intellectual and cultural identity. It merges tradition with contemporary style and offers the perfect space for performances, community events, workshops, and gatherings.



Lebanon Trade Finance Support (LTFS) Fund is a Cyprus-based fund providing factoring solutions to Lebanese exporting companies. LTFS is owned equally by Orion Financial and Ellinas Finance Public Company Limited, both with strong track-records in factoring.

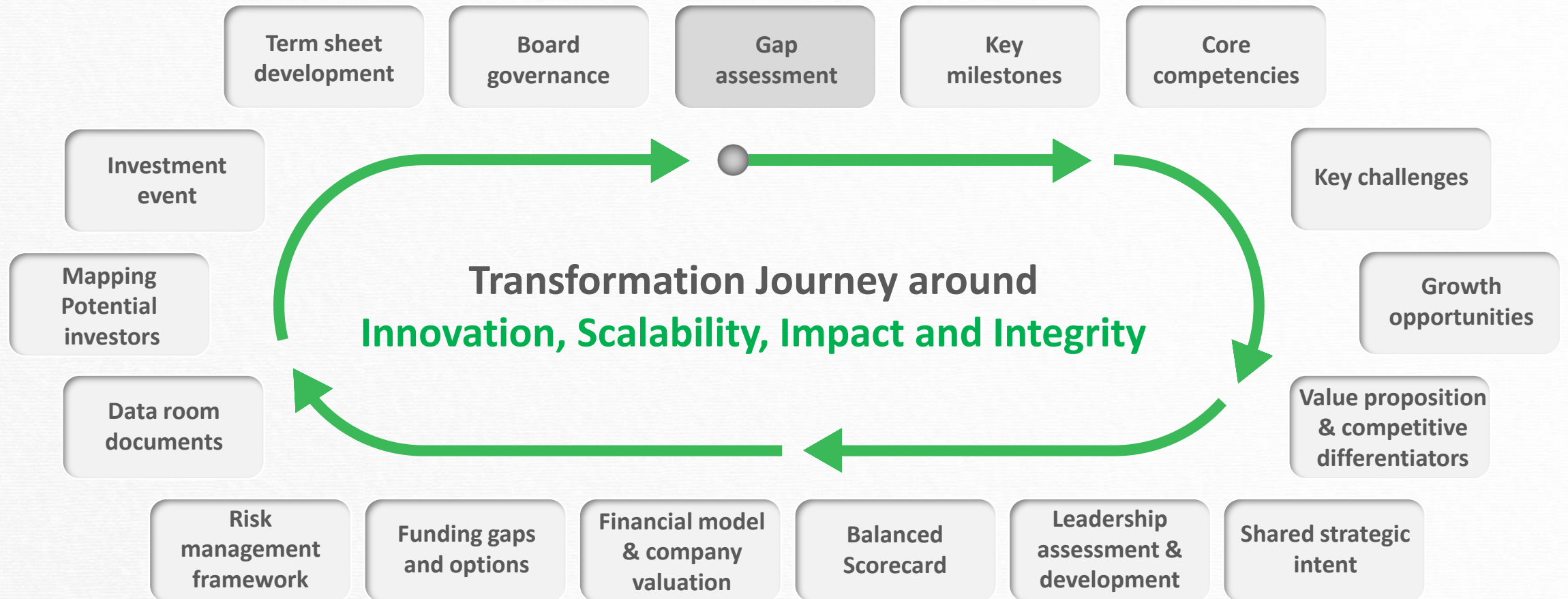


Outsource Support Services, is a Ghanaian company providing professional services in engineering support and supplies across Ghana to industrial and non-industrial sectors such as Power, Oil & Gas, Manufacturing, Mining industries.



OK Distribution is an FMCG distribution company that is digitizing the grocery supply chain by leveraging proprietary technology to empower the largest number of traditional Lebanese retailers with supply chain solutions and business intelligence tools.

Our Transformation Framework



Our Team



Constantin Salameh

Over 40 years of experience helping boards & founders of innovative ventures & social enterprises scale, access funding, and accelerate their financial & social value creation in Europe, Middle East, Africa and Asia.



Lama Makarem

20 years of experience in banking, risk management and strategy & management consulting in Lebanon, MENA and the GCC.

Our **Advisors**



Maria Chatti - Gautier

Extensive experience in private equity, built over 25 years as a Senior Investment Manager in prominent financial institutions. Proven track record in M&A, LBO structuring and equity investments in entrepreneurs/family-owned companies, with a presence on boards of more than 30 companies.



Kamel Abdallah, Ph.D

Over 25 years of experience as Group CEO with GCC Family Investment Offices (Assets over \$1bn) with a track-record in achieving profitable double-digit growth, along with execution of portfolio rationalization, private placements and joint ventures with multinationals.



Raja Moubarak

Broad experience as a former international executive, social entrepreneur and coach for multinationals, SMEs and start-ups in Europe, Asia, MENA, the USA and Africa across different sectors. With a passion for impact-driven organizations, he is now dedicated to the transformation of SMEs.



Eric Mimoz

A former international executive turned entrepreneur, investor, board member and advisor. His 30 years of experience include various responsibilities with multinationals, family-owned companies, SMEs and start-ups in EMEA, Asia Pacific and North America across different sectors and functions.



Nadine Asmar

Over 20 years of international experience in business strategy, human capital development and entrepreneurship as a resilient facilitator and coach. Today, as a catalyst & enabler of impact leaders, she strives to bring a renewed clarity to their purpose to unlock their potential in aligning their mind, heart & will.



About Constantin Salameh

Over 40 years of experience helping boards & founders of innovative ventures & social enterprises scale, access grant/debt/equity funding, and accelerate their financial & social value creation in Europe, Middle East, Africa and Asia.

- MD of HP Financial Services in EMEA and Asia Pacific (1984-2003)
- CEO of Private Investment Groups in EMEA (2003-2015) including Al-Ghurair Investments and ETA
- Investment & Board Advisor to Stanford Seed companies in West & East Africa (2015-2023)
- Board Member & Advisor to several institutions including Berytech VC Funds, Yaro PE Fund, Debbane Agri Group, CCL Group, CCHO, Nyaho Group, EHS Group, ISON Group, Joissam, Debbane-Saikali Group, ICC Group, Biomass, Ashesi University, & GreenWheels Africa.
- Head of Investments for the USAID-funded WE4F Program with Berytech in MENA, targeting 35 innovative social enterprises (2020-2023) providing them with TA & Investment Readiness services and grants, helping them raise over \$35mn in 2022-2023. Within this program, 10 out of the 35 supported enterprises were Egyptian companies, which collectively attracted the largest share of funding raised across the portfolio, underscoring the program's transformative impact in Egypt.
- Debt & Equity investor in several firms including Joissam, Emigoh, Optique & Vision, BioCorn, K2Farms, CCHO, Nyaho Group, FabridAid, OK Distribution, Made by Nature, Outsource Support Services, Serenity, Ground Vertical Farming, Wakilni, Naja Saade, id.Beirut, Inventures, and Crissman and in two Seeders Business Angels Funds investing in and scaling innovative firms.
- Investment Advisor & Mentor to scaleups and startups in leading accelerators and programs (Agrytech, CleanTech, HealthTech & ImpactRise) with Berytech, AUB, USJ, Anima, bloom, LIFE, Goethe and Flat6labs (2017-2023)
- Trainer and Coach for 20 Civil Society Organizations (CSOs) through the Swiss Economic Cooperation (SECO) and GFA, focusing on building financial sustainability and organizational effectiveness.
- Engineering Degrees from King's College London (B.Eng) and MIT (M.Eng), MBA (International Finance) from Stanford Graduate School of Business and Strategic Finance Diploma from IMD
- Grateful son, husband, father, grandfather and friend for all the gifts and life experiences received



About Lama Makarem

20 years of experience in banking, risk management and strategy & management consulting in Lebanon and the GCC.

- Lead advisor with CSTouch (July 2023-Present) supporting social enterprises, startups, NGOs and SMEs in Lebanon and MENA countries on their transformation, strategic positioning, scale-up, investment readiness and fundraising journeys.
- Investment advisor & mentor to scaleups and startups in leading MENA accelerators and SME support programs (Diaspora for Lebanon MSME program with LIFE, YELA program with Alfamar, NABAD and Tabadol with makesense, StartMashreq with Flat6labs, FANTASMEEM with Goethe Institute, Co-workup and MSEC-GIZ Startup Expert with Anima Investment Network).
- Lecturer to entrepreneurs and executives on various strategy and investment topics (transformation plans, investment readiness, valuation, governance, access to capital, term sheet negotiation...)
- Investment specialist at Berytech for the USAID-funded WE4F Program in MENA targeting 35 innovative SMEs (2022-2023), providing investment readiness support on financial model development, data room preparation and fundraising.
- Head of financial Risks at Bank Audi, Beirut, Secretary of the Board Group Risk Committee (2015-2022). Monitored the Bank's financial position, designed stress test scenarios, formulated risk strategy and appetite, and developed recovery plans.
- Consultant with the Boston Consulting Group (BCG) in Dubai, member of the Financial Services Practice group (2012-2015) working across private and public sector institutions.
- Lecturer on Risk in Financial Services at Ecole Supérieure des Affaires - ESA (2014-2017) giving a series of 2-day courses to prepare bankers/ risk professionals for CISI's exam required by the Central Bank.
- Market Risk Analyst at BLOM Bank, Beirut (2007-2011) implementing Basel regulation on the bank's local and foreign subsidiaries.
- BA in Economics from the American University of Beirut (2007) and MBA from London Business School (2013)
- CFA charterholder (2013) and the holder of the FRM (Financial Risk Manager) certification (2010)

Our Clients

Our Partners





Extracts from Selected Testimonials

"... Constantin and Lama have been instrumental in our growth and funding journey. What sets them apart is their exceptional straightforwardness, promptness, focus, and action-oriented support. Their ability to communicate with utmost clarity has provided us with invaluable insights and guidance. More importantly, they don't just offer advice and guidance; they roll up their sleeves and actively support us in implementing necessary changes and improvements..."

Yusr Sabra

CEO – Wakilni (Logistics, Lebanon & Jordan)

"... Constantin has been a source of inspiration, guidance, and support throughout my entrepreneurial journey. His expertise in the financial realm is unparalleled. Time and again, he demonstrated an astute understanding of market trends and made strategic investment recommendations that yielded remarkable results for my company..."

Christiane Maskineh

Founder and Managing Director – CCHO (Healthcare consulting, Lebanon & GCC)

"... Eric's contribution has been key to align our executives not only on the strategy but also on the roadmap to reach our objectives and get their traction for the transformation. Eric demonstrated unique leadership and ownership beyond expectations..."

Pascal DEPERROIS

CFO – Amadeus Company (IT Solutions, France)

"... We had the privilege of working with Constantin and his team since 2018. His expertise, guidance, and unwavering commitment to our growth and development have truly made a significant impact on Robinson Agri. Constantin's profound understanding of business dynamics and his ability to identify areas of improvement have been instrumental in our journey towards success. Constantin, you are an exceptional professional, and a very dear friend. We are immensely grateful for the opportunity to work with you..."

Nadine Khoury

CEO – Robinson Agri (Agritech, Lebanon & Africa)

"... CSTouch Advisors est intervenu dans le cadre du projet Coworkup, mis en œuvre par la GIZ Tunisie, visant à aider les organisations de soutien aux startups et à renforcer leur pérennité financière.

Leur contribution a été remarquable. Elle a comporté des sessions collectives de formation en ligne puis un accompagnement individuel au cours de rencontres à Tunis et de sessions de coaching personnalisé, portant sur des thématiques variées : stratégie, accès au marché et au capital, diversification des modèles d'affaires, approche partenariale, etc. L'excellence des conseils fournis, tant sur le plan de l'expertise que de la compréhension fine des enjeux organisationnels et humains propres à chaque structure, a été unanimement saluée par les organisations accompagnées. L'engagement exceptionnel des experts de CSTouch Advisors, allié à une rigueur exemplaire dans la mise en œuvre des activités, a largement contribué au succès de ce projet. ANIMA est fier d'avoir pu offrir un accompagnement d'une telle qualité grâce à CSTouch Advisors.

..."

Zoé Luçon

Project Manager – ANIMA (Investment Network, France)

Extracts from Selected Testimonials

"... I want to express my sincere gratitude to Constantin Salameh for his outstanding support and coaching. His inputs and guidance have been instrumental in building our team capacity, growth and success.

Constantin's experienced coaching has been invaluable in developing me and our leadership team. His guidance and mentorship have enhanced our strategic thinking and decision-making abilities, enabling us to navigate challenges and drive our company forward..."

John Fawaz

CEO – Debbane Agri Holding (Agri, MENA)

"... I am thrilled to share my experience working closely with Constantin, Eric and the team for over four years. They have been invaluable partners and guides throughout our entrepreneurial journey, supporting us from the early stages of acceleration all the way to scaling our company. One of the most remarkable aspects is the priceless support they provided us on investment readiness. They assisted us in every step of the process, including financial modeling, valuation, due diligence, developing the data room. Their expertise and guidance helped us navigate the complex landscape of investment options and negotiate with investors..."

Marc Aoun

CEO – Compost Baladi (Waste Management, Lebanon & Jordan)

"... The level of professionalism and guidance that Constantin and Lama have demonstrated are impeccable. They have been here for us and helped us scale up our businesses but most importantly, our minds..."

Aline Kamakian

Founder & CEO – IRMA /Mayrig (Food & Restaurants, Lebanon, MENA & US)

"... We were amazed by the grasp and acumen of Constantin. His understanding of our business, challenges and opportunities, by someone totally new to our sector, was truly impressive.

Beyond technical knowledge, what truly sets Constantin and Lama apart is their profound dedication to our vision and mission. Their passion and belief in what we do has not only made us feel as if they have always been part of our institution, but it has also been a major force behind our renewed efforts to expand our outreach and increase our impact..."

Youssef Fawaz, PhD

Executive Director – Al Majmoua (Microfinancing, Lebanon & MENA)

"... Constantin Salameh accompanied our portfolio companies at Berytech fund from cradle to maturity. Being on our investment committee, his input in selecting the right investments was invaluable given his deep knowledge and expertise in corporate finance. The journey continued in mentoring and advising the companies toward achieving their growth target..."

Sami Beydoun

Managing Director – Berytech Fund I (VC, Lebanon)

"... Your input has been instrumental in developing a comprehensive restructuring plan, updating our board of directors, working on a board of trustees, and conducting a thorough review of our NGO's mission and objectives. This process has empowered us to make well-informed decisions, enhanced our learning experience, and shed light on our organization's strengths and weaknesses..."

Imane Assaf

Founder and Managing Director - Ahla Fawda Team (NGO, Lebanon)

Extracts from Selected Testimonials

"... It is often said that leadership is a lonely journey. However, this hasn't been so for me. Constantin has been with me every step of the way and has left an indelible mark on my life as an advisor, coach, and a friend. From our first engagement, his passion for people was endearing. I found myself wondering how he had so much energy to give to so many people across multiple industries and businesses. His expertise was evident but more importantly, his interest in my life, allowed for a trusting relationship to be built. He has challenged my thinking, encouraged me to persevere in the challenging times, and has supported me unwaveringly. He is genuine and kind, and I am honored to have him on my leadership journey..."

Elikem Tamaklo, MD

CEO – Nyaho Medical Group Health Care provider (Medical, Ghana)

"...CSTouch Advisors has been invaluable in the Diaspora for Lebanon project, supported by LIFE and the DROSOS FOUNDATION. Their expert financial advisory, investment strategies, and growth planning have empowered MSMEs to thrive, especially during one-to-one coaching sessions and group workshops delivered to the MSMEs. What sets them apart is their hands-on approach and rigorous follow-up, treating each MSME as their own. Their dedication and expertise have made a real impact, and we highly recommend them for their outstanding support to businesses..."

Tana Haidar

Project Manager – Life Drosos Diaspora for Lebanon Program (Lebanon)

"... Through your profound understanding of business and finance you identified and addressed the critical issues that were jeopardizing our company's stability. Through your guidance and expertise, you successfully rectified the various challenges we were facing, placing our business on a path toward enhanced profitability and sustainability..."

Ade Popoola

Group Managing Director – Reals Group (Pharma, Nigeria)

"... I have been working with Constantin Salameh and his excellent team for a few years now. ALVÁTECH and I have learned and benefited from Constantin's advice and guidance that were always wrapped in stories and lots of patience that made every rollercoaster journey a pleasant one. Constantin is an exceptional individual and professional and is an asset to every CEO, founder and company. He has the rare combination of proven experience, all round knowledge, limitless passion that makes you want to hear what he has to say even when it is not easy on one's ear..."

Zac Gazit

CEO and Managing Director – ALVÁTECH Sustainable Water Technology (Watertech, UK & Emerging Economies)

"... Since the first time I met Constantin, I met a positive energy! So positive that it makes the whole world follow you. Your endurance and drive to make things progress in a country that is dying from all sides is admirable. You are always helpful in finding solutions and you ensure that every person from those surrounding you can benefit along the journey..."

Diane Fadel

Founder – Fondation Diane (NGO, Lebanon)

Extracts from Selected Testimonials

"... I'm delighted to have the opportunity to work with Constantin Salameh and his team. They played a crucial role in identifying and addressing our cash gaps. Their deep understanding of finance, coupled with their analytical prowess, allowed us to gain valuable insights into our financial landscape. With their guidance, we were able to develop effective strategies to manage our cashflow more efficiently and learn about funding mechanisms to ensure the sustainability of our growth..."

Andre Hajjar

CEO, GO Baladi (Food processing, Lebanon & GCC)

"... Quel plaisir de vous entendre et avoir les détails de votre cours si dynamique, passionné et encourageant. Je vous félicite et vous remercie du fond du cœur. Nous sommes honorés de vous avoir avec nous au sein de la grande famille de la FGM. Merci pour toute cette passion!..."

Fouad Zmokhol, PhD

Dean of the Business School at Université Saint Joseph (University, Lebanon)

"... The real value-added from Stanford Seed program came from Constantin as we started together the process of implementing the transformation plan of my company. I saw concretely how the theory taught by Stanford faculty could be put into practice in a social enterprise and transform the lives of hundreds of thousands of rural people in East and West Africa..."

Olivier Mugabonake,

Founder and CEO – AD Finance (IT, Rwanda & Africa)

"... Constantin has been working with our Group for over 4 years as a board advisor as we strive towards becoming a more corporate outfit transitioning from a family business setup. Over this period, he has become more than just a board advisor. I consider him a mentor and a friend..."

Veeral Patel

CEO Bio-Corn (Bio-energy, Kenya)

"... Constantin's expertise in investment readiness has been invaluable and his coaching has helped us develop our skills, improve our processes, and position ourselves for success..."

Ahmed M. Rady, PhD

CEO – EGYMAG (Biotechnology, Egypt & Africa)

"... We benefited a lot from Constantin and the team's dedication in helping us develop our transformation plan, financial model, pitch deck and expansion plans. We are looking forward to continuing the execution of our transformation journey with CSTouch and accelerate our financial value creation and ESG impact in Egypt and across the region..."

Ahmed Al-Sabry

Founder and CEO – Green Eagle Tech (Agritech, Egypt, MENA & GCC)

Extracts from Selected Testimonials

"... We are lucky and privileged to shape this transformation journey with Constantin through the introduction of a sound corporate governance foundation, the development of new SOPs, the building of a high-performing team and the launch of innovative products and services..."

Hamisi Mikate,

Founder and CEO – Ensol (Renewable energy, Tanzania)

"... We had the pleasure of working closely with Constantin as our board advisor, who consistently demonstrates exceptional corporate governance skills. His deep understanding of business dynamics and entrepreneurial mindset has been invaluable in guiding our company towards success. Moreover, his mentorship has been instrumental in nurturing our team's growth and development..."

Sheetal Dave

CEO – Executive Healthcare Services (Insurance, East & West Africa)

"... We consider ourselves fortunate to have met Constantin Salameh in 2015 for our transformation journey under the Stanford Seed program. He has since become not only an advisor and active board member but also an investor in our company..."

Samuel Appenteng

CEO – Joissam Limited (Watertech, Ghana & West Africa)

"... Any company seeking to transform requires a mindset shift. This is exactly what Constantin brought to the PPA table between 2015 and 2017. Under his guidance, our organization saw many structural changes that led to sustainable profitable revenue growth..."

Ekua Adams

General Manager – PPA (Control systems, Ghana)

"...Constantin demonstrates his passion and leadership by helping everyone reveal the leader within and by helping local businesses with a mission to prosper in Lebanon and beyond. He has a gift for identifying the strengths in others for the purpose of supporting social enterprises..."

Sawsan Fadlallah

Founder & CEO Motor City Pharmacy Corp (Pharma, USA)

"... I cannot express enough gratitude to Constantin for his exceptional contributions. His thought-provoking questions regarding finance, marketing, sales, and growth allowed us to adjust and adapt our plans for future success. Above all, his unwavering commitment to social entrepreneurship and sustainability is truly remarkable. He brings a fresh perspective to any business in the modern world, emphasizing the importance of social impact..."

Sabah Corm

CEO Rigino (Food safety, Lebanon & GCC)



CONTACT US



Constantin Salameh

Route des Esserts 2, CH-1279 Bogis-Bossey | Mob: +41 79 399 10 70

Constantin.salameh@cstouch.co

Lama Makarem, CFA

Independence street, Dhalia 906, Achrafieh, Beirut – Lebanon | Mob: +961 3 207 467

Lama.makarem@cstouch.co