

We enjoy driving the organisations of the future

DIGITAL INDUSTRY

Nunsys Group

Subtítulo apartado

01

About us

Technological leader in value added solutions

We are specialists in the implementation of comprehensive technology solutions, we are experts in combining technological products in the area of infrastructures, communications, software, digital transformation, industry and cyber security, with the goal of offering unique solutions for both public and private entities.

Collaboration, innovation and our passion for what we do is reflected in each of the services we offer.



Human team

We keep growing

2600 people, with a predicted business volume for 2023 of 230 million euros

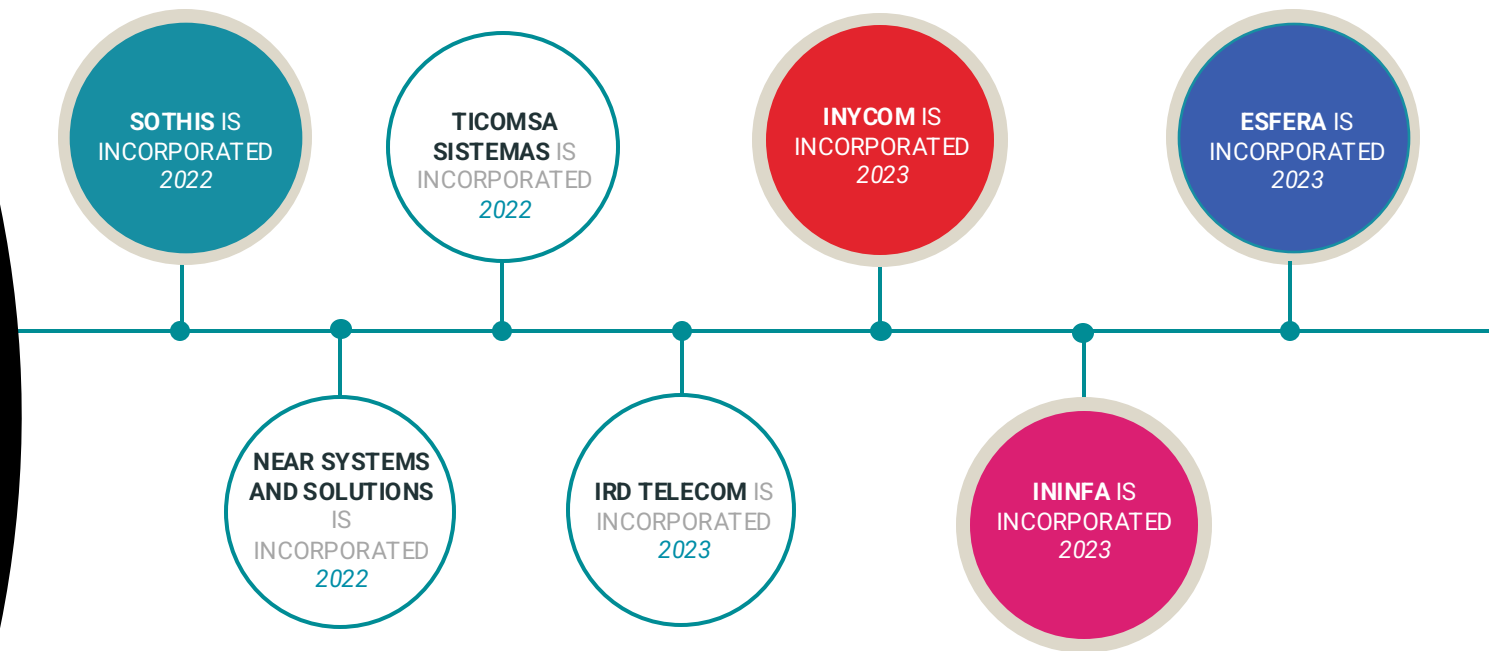
We have a presence throughout Spain and in international projects, with a unique portfolio of products and services, highly specialised and focussed on covering the needs of our clients to accompany them in their digital transformation process.

For us, it is vital that we provide all of our employees with the opportunity to develop both personally and professionally in a leading and exemplary company, enjoying an atmosphere of collaboration, creativity and responsibility.

What has happened in recent years?

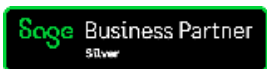
In 2007, BPLAN Soluciones was formed, the founding company of what is now called Nunsys, and it launched the activity of an emerging company with dreams of becoming a leading technology company. From this starting point, Nunsys began its expansion with the opening of branches throughout Spain.

We are undergoing a continuous growth process, focussed on achieving our goal of being one of the main technology companies. Fruit of this passionate and challenging goal, today we are proud of the incorporation of the technology company, Inycom and Ininfa Colombia, to the Nunsys Group.



Partners

We are committed to having partnerships and to being a partner of the key global leaders in the technology sector.



Offices in Spain and abroad

Continuous growth

Our business vision is to become the leading Spanish technology company. To do so, we have a presence with certified teams throughout the national territory.

Currently, we have offices located in the provinces of A Coruña, Albacete, Alicante, Barcelona, Bilbao, Burgos, Cáceres, Castellón, Huesca, León, Logroño, Madrid, Málaga, Murcia, Oporto, Oviedo, Palma de Mallorca, Pamplona, Salamanca, Santander, Seville, Tarragona, Valencia, Valladolid, Zaragoza, serving more than **7000 clients**.



International projects



Our DNA

SECTORIZATION and SPECIALIZATION our differential values

25 years of experience

The team of professionals is consolidated on more than 25 years of experience, oriented towards excellence

International experience

Our team of engineers and consultants have carried out projects in more than 40 countries: multicultural management

Human team

250

INDUSTRY
ENGINEERS

230

COMMUNICATIONS
ENGINEERS

315

SAP
CONSULTANTS

200

BUSINESS
APPLICATIONS
CONSULTANTS

90

CLOUD
CONSULTANTS

110

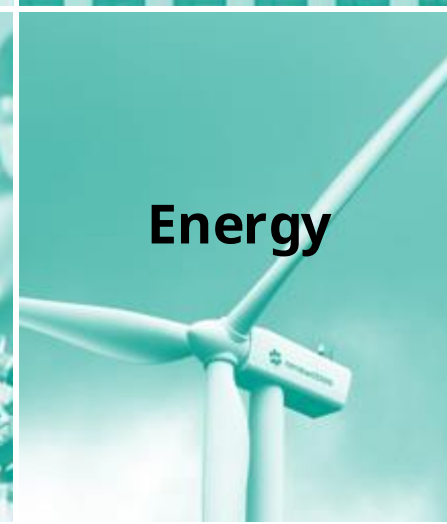
CYBERSECURITY
CONSULTANTS

190

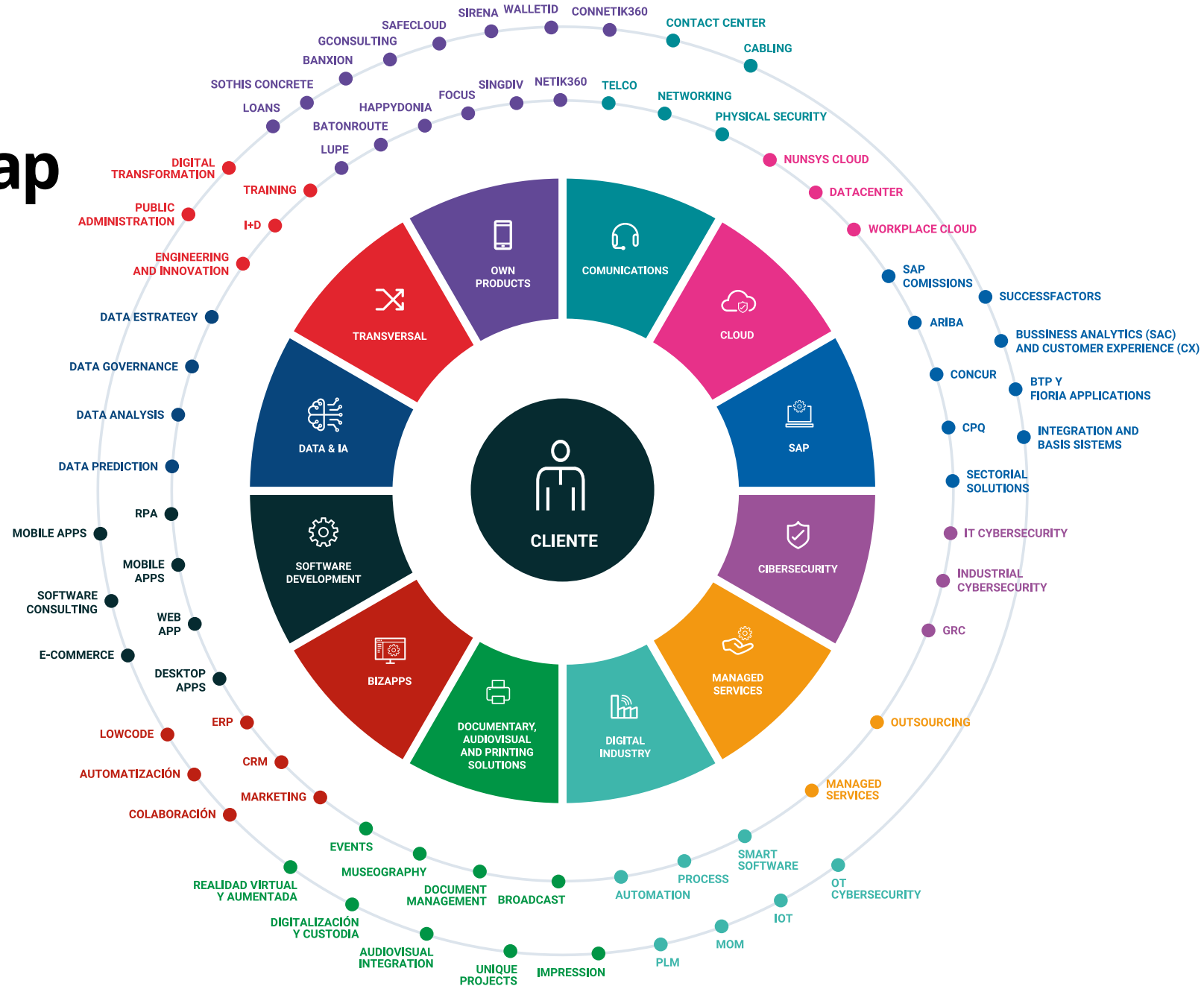
IT MANAGED
SERVICES
CONSULTANTS

Sectors

SECTORIZATION and SPECIALIZATION our differential values



Mind map



Services

Support 24x7 (NOC) y Cybersecurity (SOC)

- **Location:** Valencia, Madrid, Barcelona, Medellin
- Different **time coverage:** 8x5, 12x5, 24x7
- **Multilanguage:** Spanish, English, German
- **Multichannel:** User portal, telephone and email
- Guaranteed **SLAs**
- **Qualified operators** (high % ITIL).
- **Contingency plan and continuity of service**

After-sale

- **Specialized After-Sales Team**

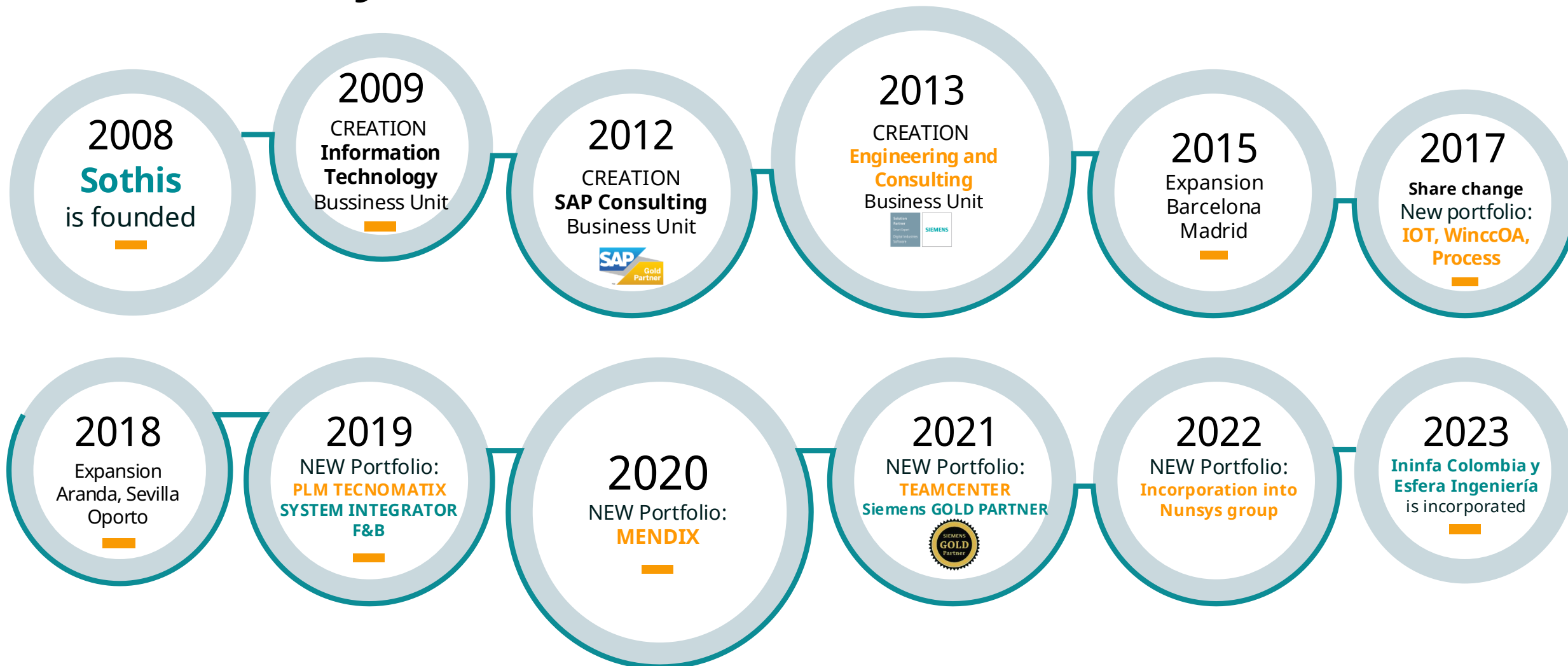


Digital Industry

Subtítulo apartado

02

Our history



Our DNA

SECTORIZATION and SPECIALIZATION our differential values



Digital Industry

ISA - 95

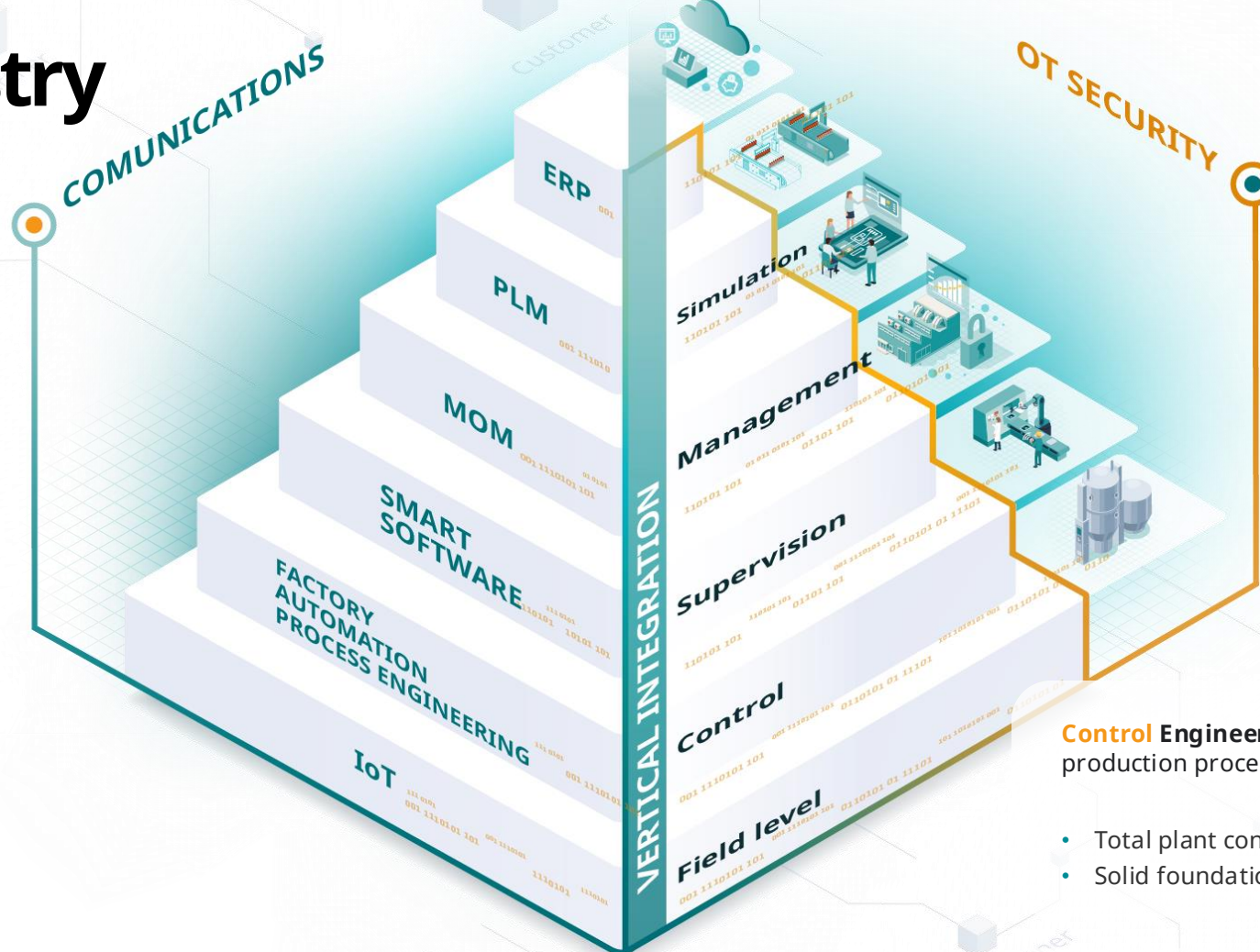
PLM, towards **virtual start-up** in the industry.

Using a **virtual model** we can reduce investment costs Before and after real execution

MOM consulting for the entire supply chain

From raw materials to delivery of the finished product. Going through production control, quality, traceability and advanced analysis through AI

Support 24/7
—
Innovation



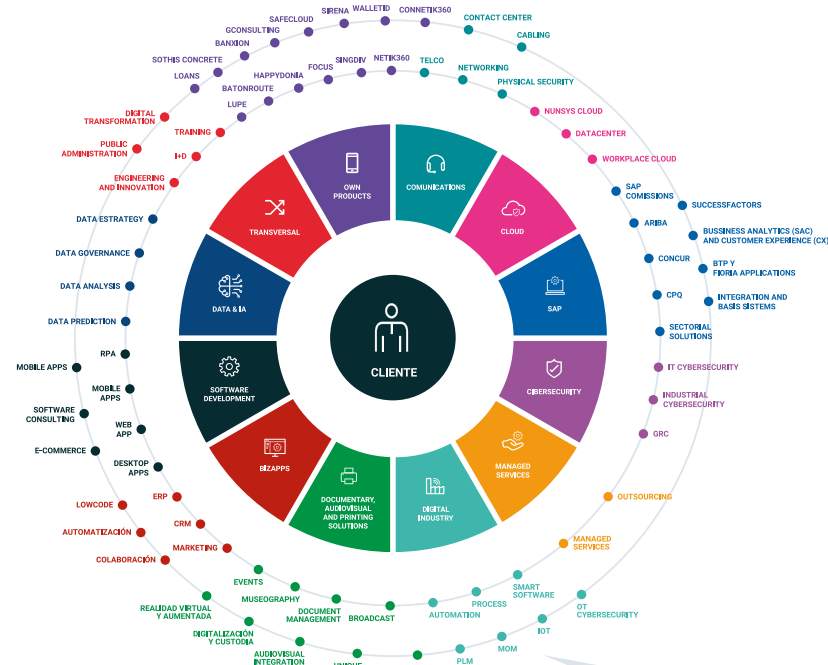
By providing the control layers with **Supervision** functionalities, we are able to make decisions in real time through advanced analytics

Control Engineering for the Automation of production processes:

- Total plant control
- Solid foundation for effective digital transformation

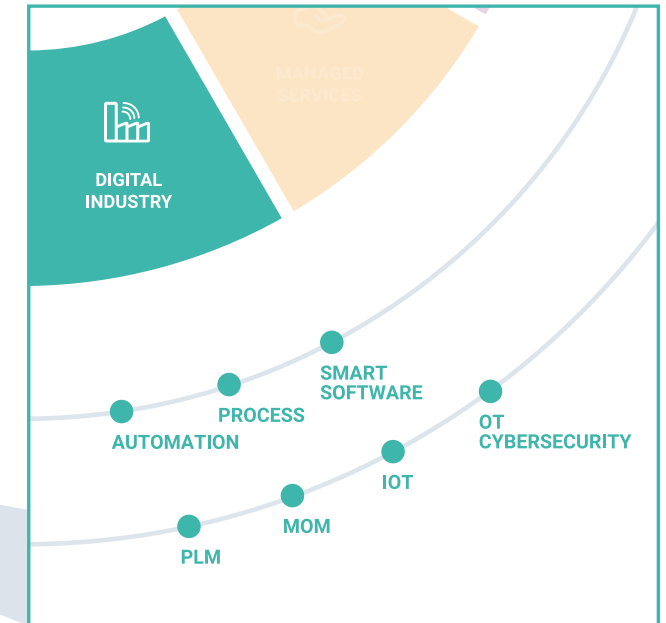
Electrical, Mechanical and Fluid Engineering

SPECIALIZATION



250
PEOPLE

32 M€
SALES VOLUME



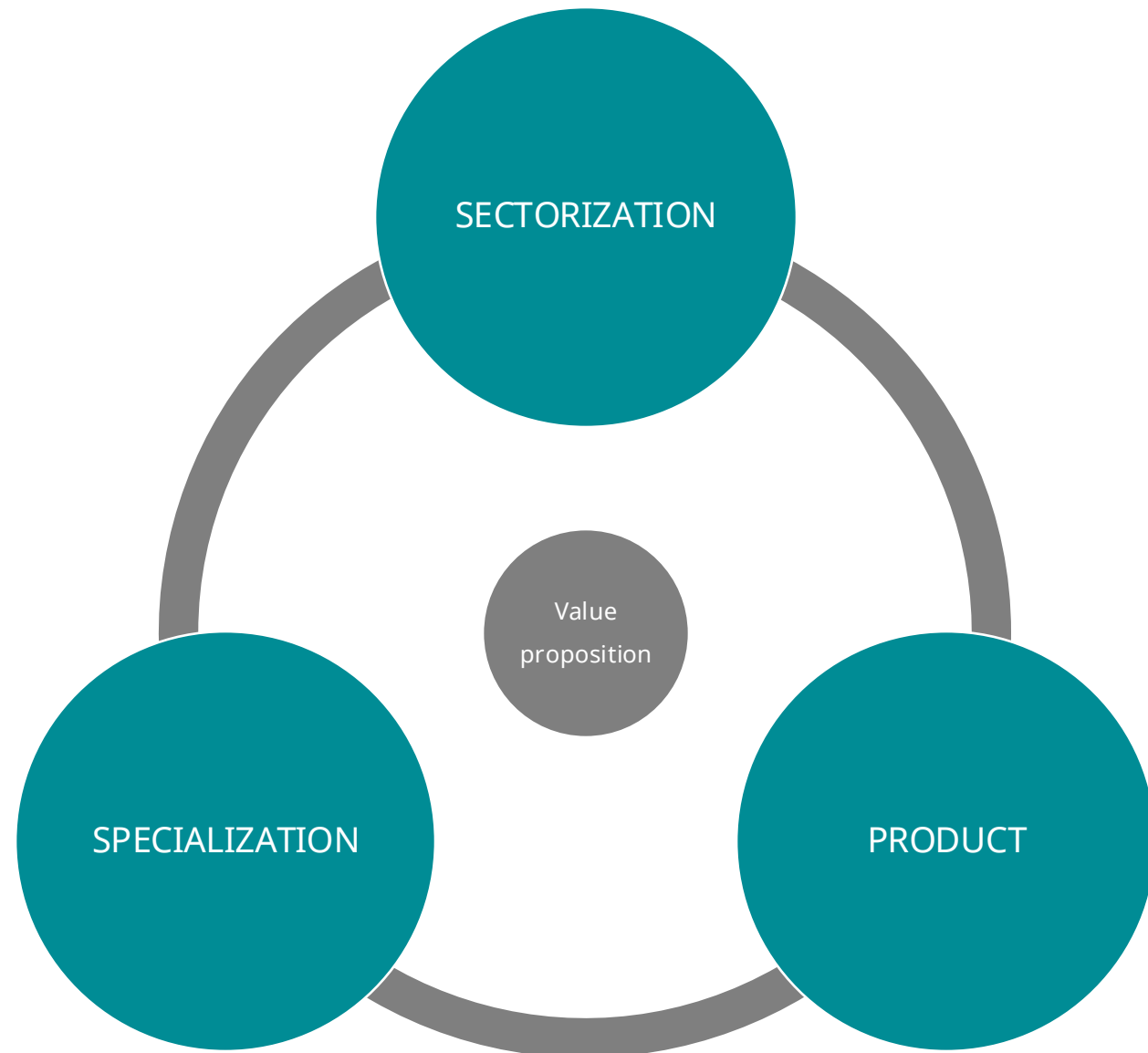
Digital Industries Software

Drives

Our STRATEGY

SECTORIZATION, PRODUCT SPECIALIZATION

These are the three vectors on
which we base our value
proposition



Our ADN

SECTORIZATION and SPECIALIZATION our differential values

25 years of experience

The team of professionals is consolidated on more than 25 years of experience, oriented towards excellence

International experience

Our team of engineers and consultants have carried out projects in more than 40 countries: multicultural management

Human team

66

PROCESS
ENGINEERS

51

AUTOMATION
ENGINEERS

24

IoT
ENGINEERS

30

SOFTWARE
ENGINEERS

59

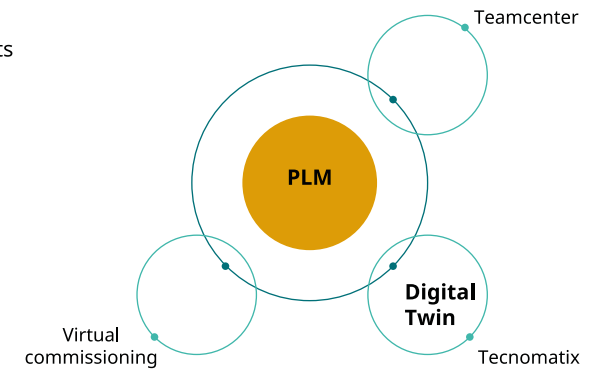
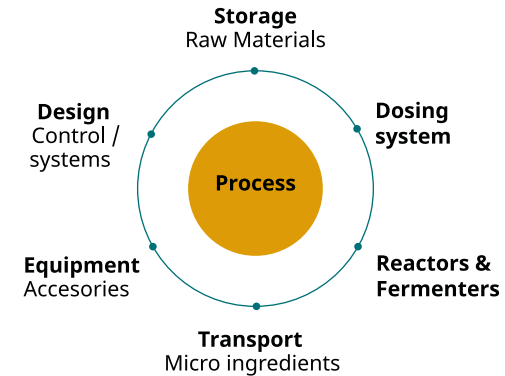
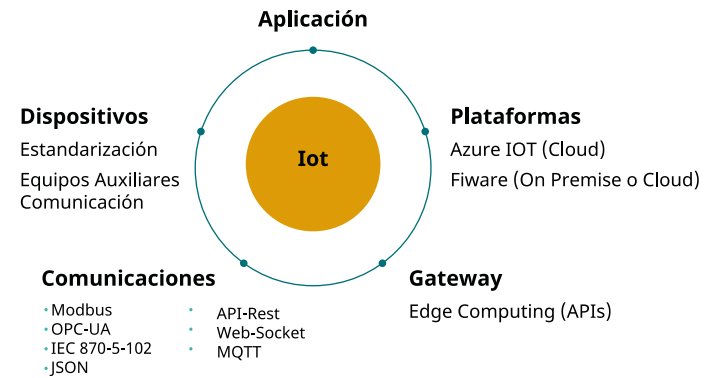
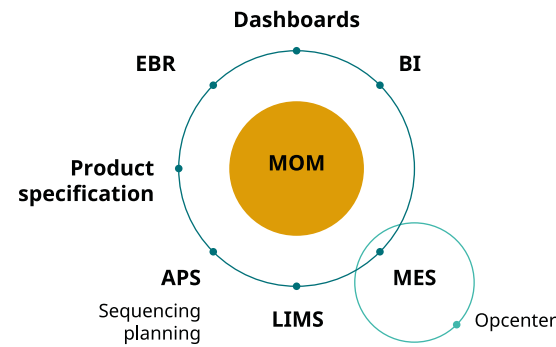
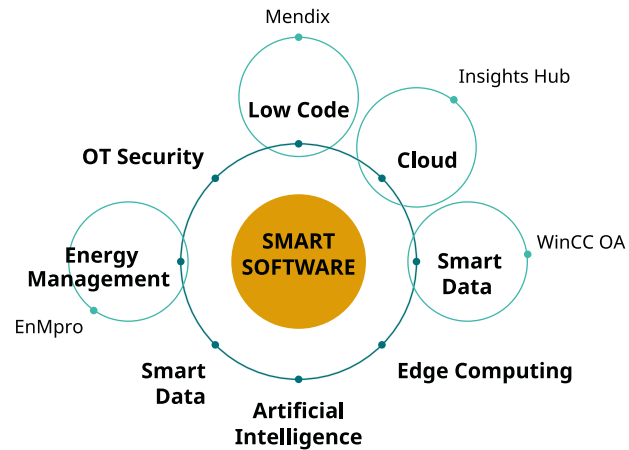
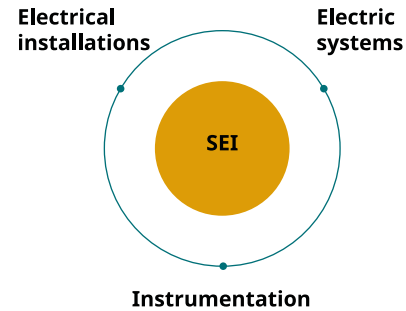
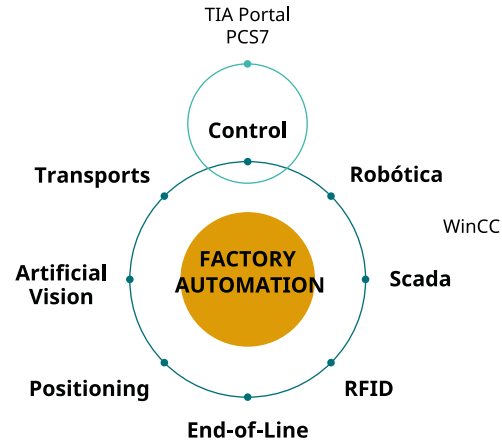
MOM
ENGINEERS

5

PLM
ENGINEERS

15

PMO
OPERATIONS





Strategic Relationship with SIEMENS

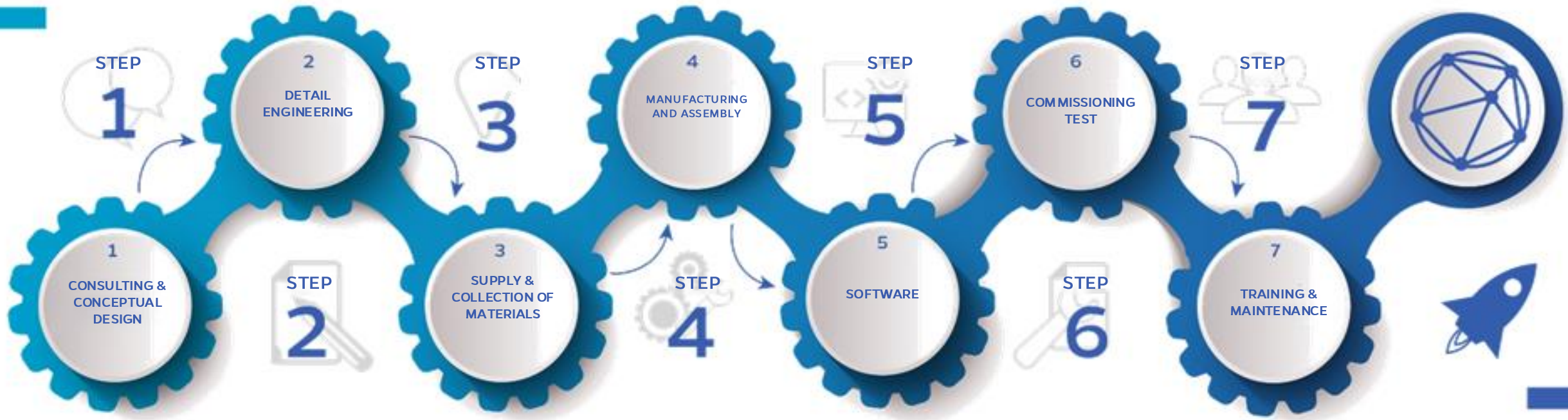
- **Siemens Gold Partner FY 2021 y 2022**
- Distributor with **the highest sales volume** in FY 2018, 2019, 2020, 2021 and 2022 in **MOM projects**.
- **Best Partner in MOM for EMEA** (Europe, Middle East and Africa) in FY 2018 and FY 2021.
- **Premium Solution Partner** in **WinCC OA**.
- Solution Partner in **Automation Drives**.
- **PLM Partner** for Tecnomatix and Teamcenter
- **Cloud Partner** for Mendix and Mindsphere
- **System Integrator** for Food and Beverages.
- **Expert Partner** in Spain and Portugal:
 - EXECUTION (MES): Process / Discrete.
 - APS: Planning & Scheduling.
 - RD&L: Laboratory (LIMS), Specification and Formulation.
 - Manufacturing Intelligence.

Tecnologies and services

03

Tecnologies and services

Turn key projects



Tecnologies and services

Automation engineering



- Control Engineering
- PLC's programing
- SCADA Systems.
- DCS - PCS7, Wonderware
- Industrial communications



Tecnologies and services

Software & IT engineering



- **Data base**
- **MES solutions**
- **Taylor made Software**
- **Networking & Security**
- **Traceability solutions**



Technologies and services

Electric engineering



- **Manufacture and design of distribution panels.**
- **Electric installations**
- **Qualification of installations**
- **Instrumentation**



Tecnologies and services

Mechanical engineering

- 3D Desing.
- Reactors, Fermentors
- Pure water loops
- In line dosing
- CIP/SIP
- UHT



ESFERA



sothis by nunsys
GROUP



Tecnologies and services

Validation process



Qualification should cover the **initial development of the URS through completion of use of the equipment,** installation, service or system

Phase	Qualification	
Design	Design qualification	DQ
Installation	Installation qualification	IQ
Operation	Operational qualification	OQ
Service	Performance qualification	PQ

Process

Subtítulo apartado

04

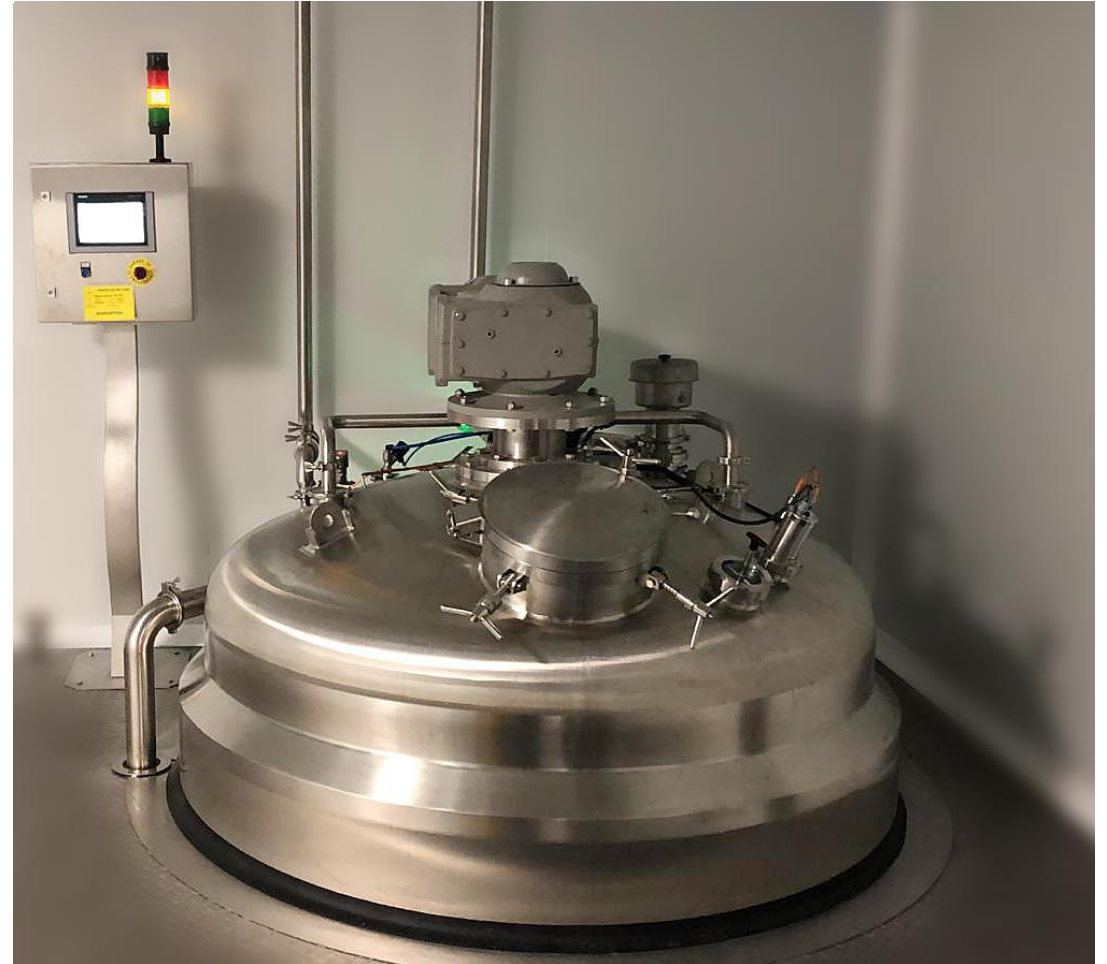
Process

Introduction

Sothis is the only partner that specializes in **Solid and Liquid processes**.

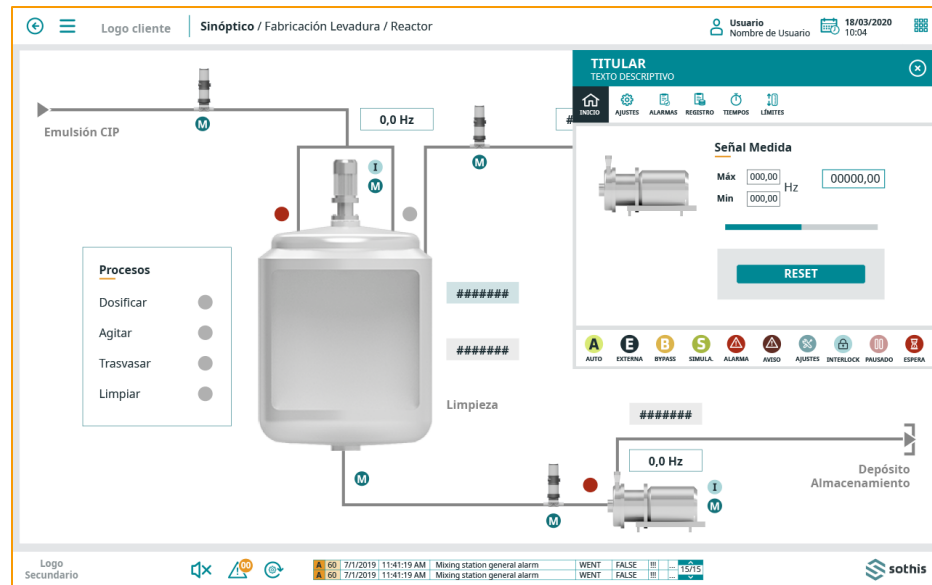
This presents in 4 key sectors:

- **Food**
- **Chemistry**
- **Cosmetics**
- **Pharmaceuticals**



Complete Processes

We offer **solutions to measure**, from the reception of the raw materials up to dosing and packaging, through the processes of racking and dosing of ingredients.



Real-life case: Food sector

Bread line

Water plant



Bread line



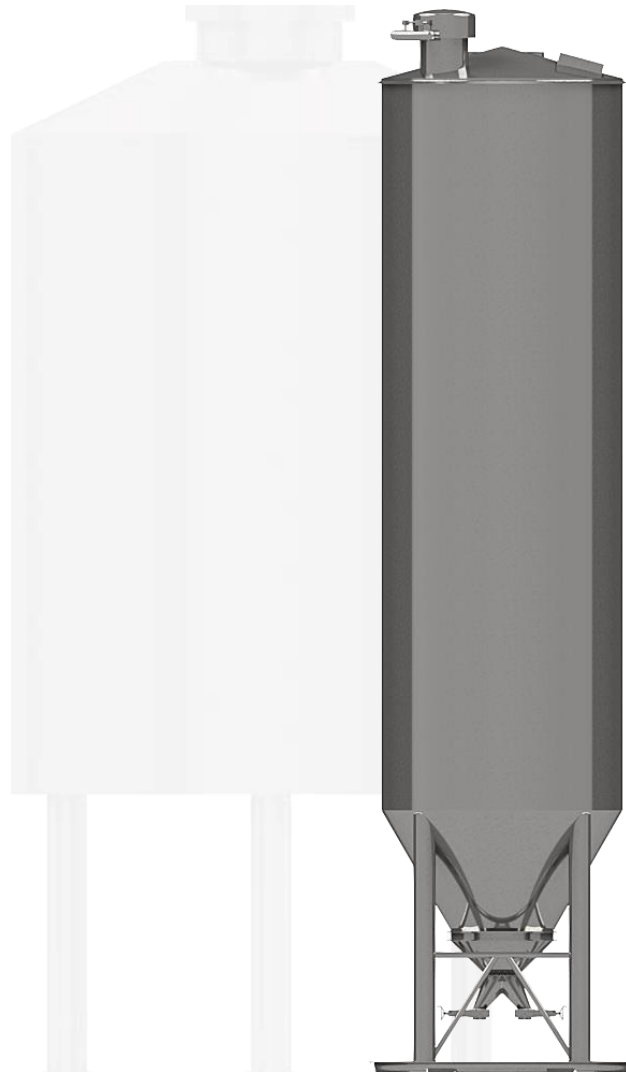
Product storage solutions

Subtítulo apartado

05

Product storage solutions

Silos



Internal and external Silos. We offer a high range of made to measure silos, from 50.000 litres to 250.000 litres, heat-insulated and with 304 and 316 L. They are manufactured in our workshop up to diameters of 4,5 meters and 20 meters of height. For bigger volumes, they are manufactured "in situ". All of our equipment is equipped under the Atex norm.

Flour extraction system with vibrant and flat bottom, maximising their work efficiency.



Soluciones para almacenamientos de productos

Big-Bag

Big Bag systems with different advantages and solutions for the storage of raw material both for dosification processes and the charging of them.

Our systems are composed by different elements so that the products are not weighed down and to favor the unloading.

“Silos of Trevira” ideal for small storage spaces, easy instalation and mounting. Great storage capabillity up to 125m³.

“Storage hoppers” Perfectly designed for the major product storage.



ESFERA



sothis by nunsys GROUP



Soluciones para almacenamientos de productos

Vaciasacos

Equipment for bag emptying pensados para ayudar a la descarga de diferentes productos en sacos e ideales para carga de depósitos minoritarios Thought for helping the unloading of different products in bags. Ideal for minor deposit loading.



Ingredient transport system

Subtítulo apartado

06

Ingredient transportation system

In the process industry, the transportation of raw materials to the fabrication point in an automatic way is needed. For this matter, we offer different types of transports, adapted to our clients needs.

Pneumatic vacuum conveying

Our equipment is designed for vacuum conveying, with **flows over 9 Tn/h.**

Applied technology that does not heat the products at high speed and pressure



Ingredient transportation systems

Dense-phase transportation

An ideal system for delicate products, obtaining a minimum grain fracture and high capability for long distance transportation.

Impulsion transport

Ideal for high flows, 40 Tn/h

Screw conveyor transport

Thought for the conveying of médium flows and the dosification of different quality ingredients (Inox 304, 316 L, delrin plastic)



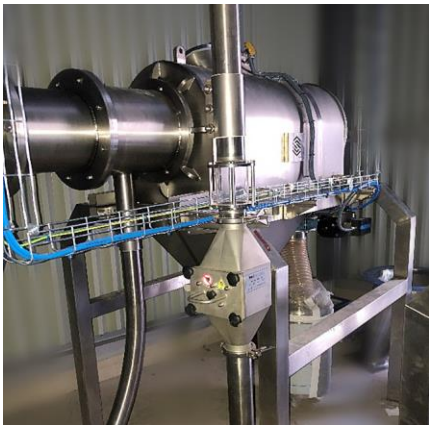
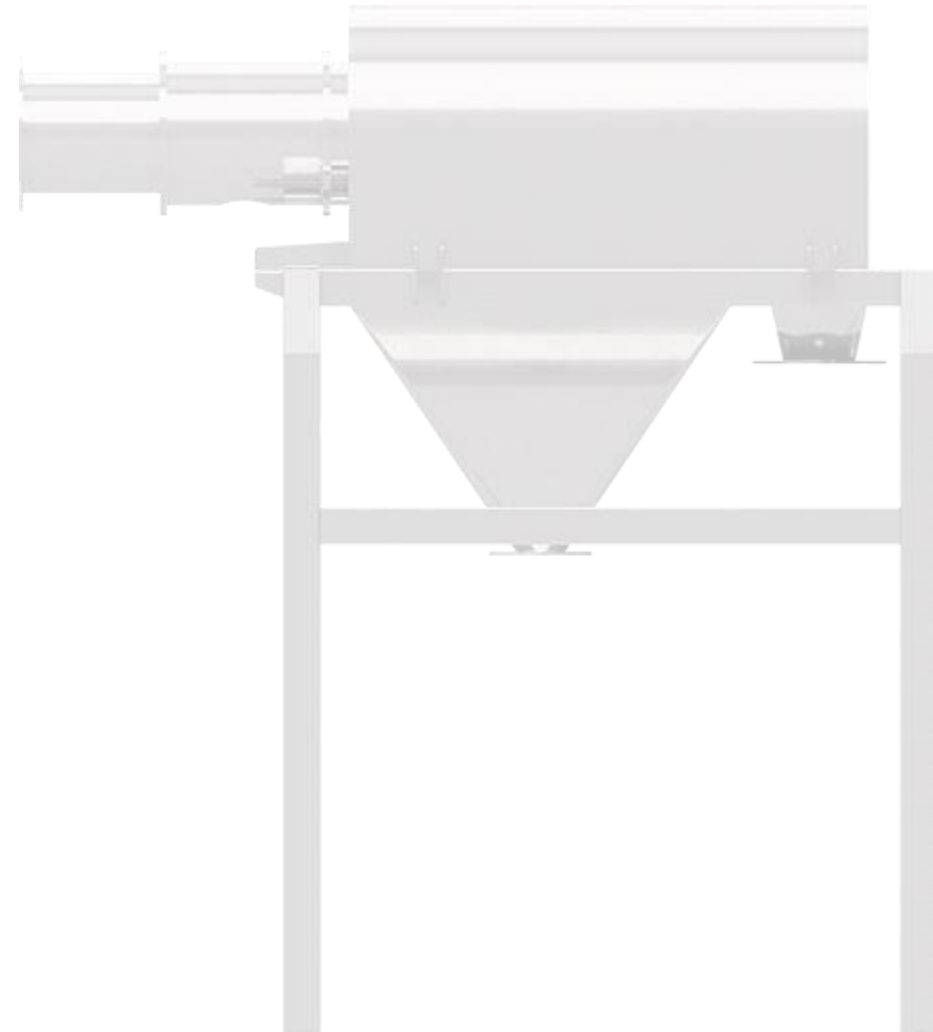
Ingredient transportation systems

Conveyor belts

In the process industry, there is a need to use conveyor belts. In Sothis, we design and calculate different belt systems, with modular belts and pvc. They are ideal for product transport in different states.

Flour sifters

Our sifters are thought for vacuum and gravity transport. They have a high conveying capacity and the sieve passages go from 600 μm to 2000 μm , with baskets of easy inspection and cleaning. We also present solutions with triangular profile baskets.



Micro and Macroingredient system

Subtítulo apartado

07

Micro and macro-ingredient systems

Micro-ingredient plant

Thought for the dossification of different products to a static formulation scale. With pneumatic transport to destination and a in-line mixer equipment. With this technology, an error lower tan 0,5% is guaranteed.



Micro and macro-ingredient systems

Major dosification plant

Ideal system for in-destination dosification and with different product, as it is able to formulate both in origin and in destination.



Equipment and accessories

Subtítulo apartado

08

Equipment and accessories



Magnetic separators

Magnetic separators are thought for the detection of magnetic products in the transport. They are ideal to assure the food security and are easy to install both in the loading of the silo and the pneumatic transportation.

Filters for the unloading of trucks in silos.

These equipments are perfectly designed to collect external particles of reduced dimensions. They present an easy to clean sieve mesh with a passage beam of 3mm.



Liquid Processes

Subtítulo apartado

09

Pharmaceutical Reactors

Design of reactors for different types of fabrication processes

- Small lab fabrication reactors.
- Bench Skid
- Fermentadores farmacéuticos Pharmaceutical fermenters



Reactors for Fabrication

Design of reactors for different types of fabrication processes.

- **Cosmetic reactors** (Ancora Helicoidal, emulsifiers)
- **Food reactors.** (Agitation-Counter-Rotation)
- **Pharmaceuptical reactors.** (Magnetic-agitation)
- **Chemical reactors.** (Agitation with high-flow paddles)



ESFERA



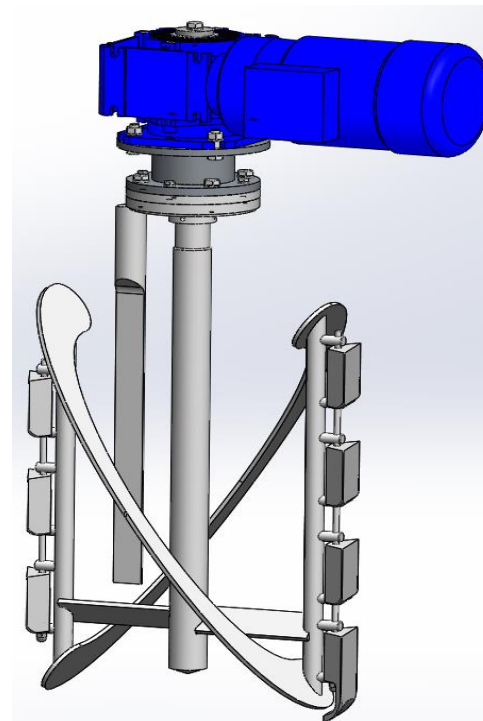
sothis by nunsys GROUP



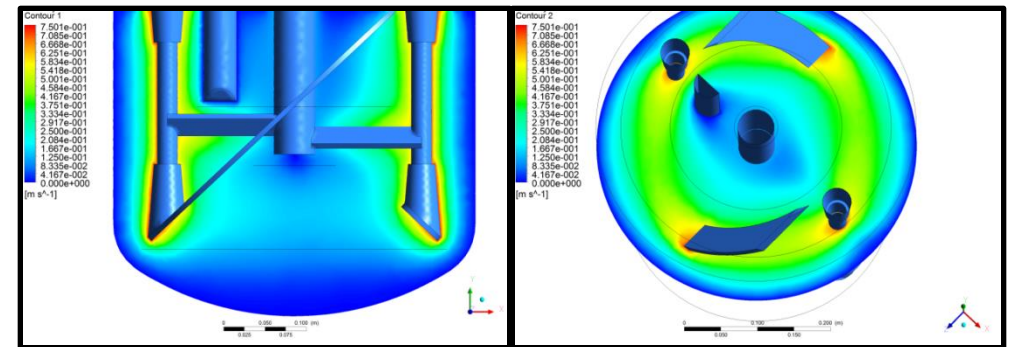
Personaliced Agitation

We do the design-simulation of the agitation and mixture equipment based on the needs of the product.

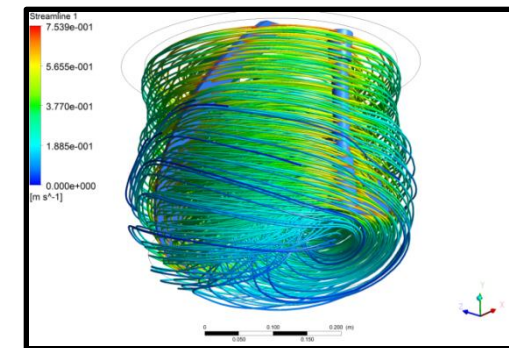
- Helix stirrer.
- Helical paddle stirrer.
- Inclined-Blade stirrer.
- Great-flow-paddle stirrer
- Magnetic stirrer



Helical paddle stirrer



Based-on-fabrication fluid simulation.



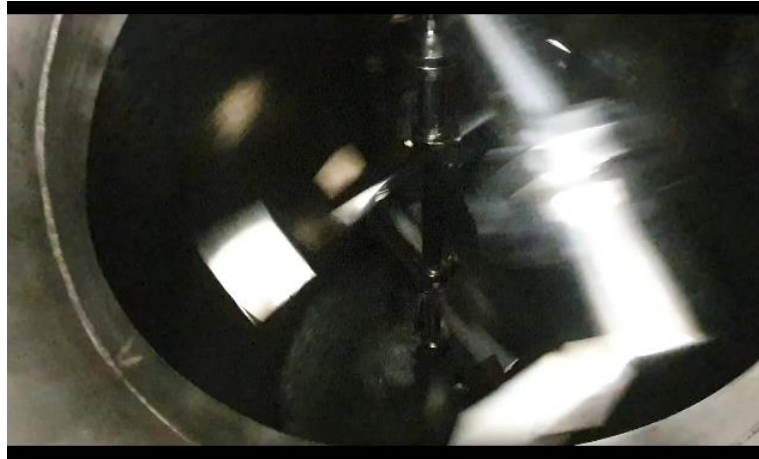
Standard Preparation Reactors



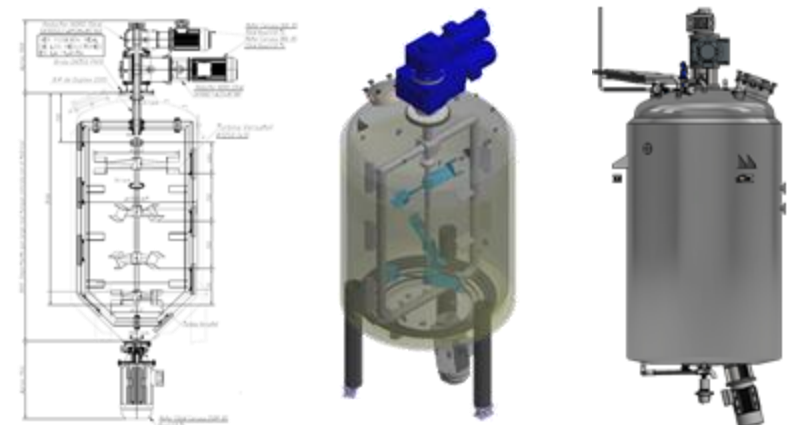
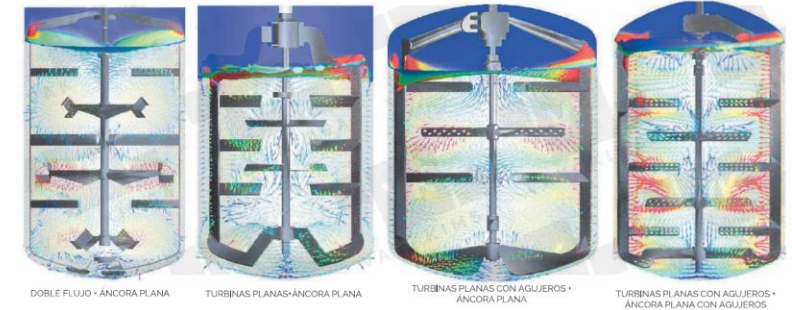
Sothis and ESFERA Engineering designs and builds reactors AD HOC, providing the necessary elements for the proper function of each process, such as heating/cooling coil, agitation, emulsifier, accessories, connections, etc.

We have a wide range of agitators for mixing processes and aseptic or sterile sanitary processes, which allows us to guarantee the correct selection of the best agitator for the required process.

The manufacturing standard of Sothis and ESFERA Engineering is stainless steel in its different types or alloys, depending on the chemical conditions of the products to be used.



Types of Flow for counter-wise-rotation stirers



High performance reactors

- Sothis and ESFERA Ingeniería designs and builds high performance reactors for pharmaceuticals, cosmetics and food.
- These reactors have a helicoidal agitator or anti-rotating blade, and an IKA DBI 2000 emulsifier.
- This equipment, integrated into a specific reactor and with ESFERA's experience in high-performance processes, achieve productivity results of up to 7 times faster than standard reactor.
- We have a wide range of high performance reactors, from 10 liters to 10,000 liters



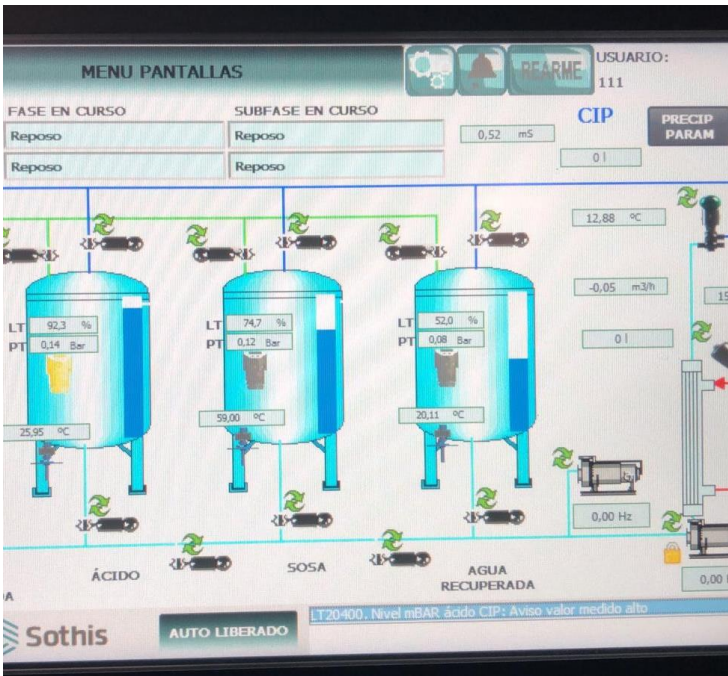
Skids - CIP/SIP



ESFERA



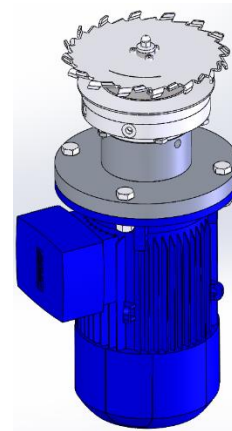
sothis by nunsys GROUP



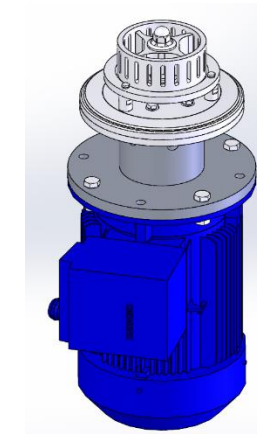
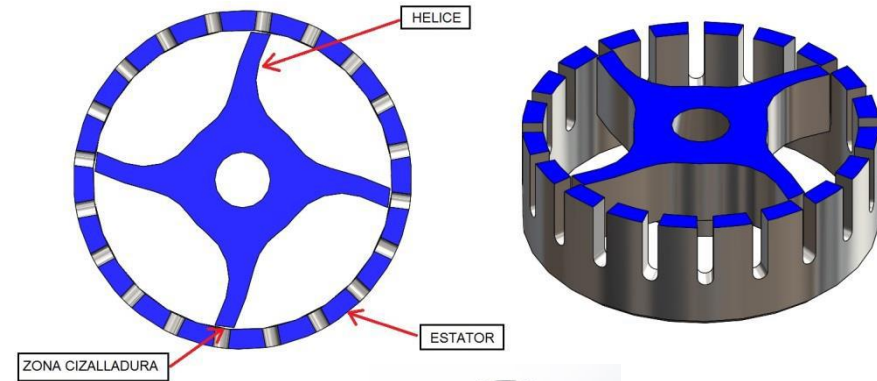
Personalized emulsions

We carry out the Design-Simulation of stirring and mixing equipment based on the needs of the product.

- Cowler.
- Emulsifier with recirculation.
- Emulsifier with Stator.
- In line mixer.



Cowler



Bottom Mixer

Plants for different solutions



ESFERA



sothis by nunsys GROUP

- Yeast plant.
- Sourdough plant.
- Beer plant.
- Ice cream plants.
- Milk plants.
- Possibility of producto transport.
- Valve island manifold send and return.
- Valve island set prepared for cleaning different paths and producto transport simultaneously



Water plant

- Osmosed water
- Water treatment
- Water cooling
- Effluent tanks



Plant equipment



CIP



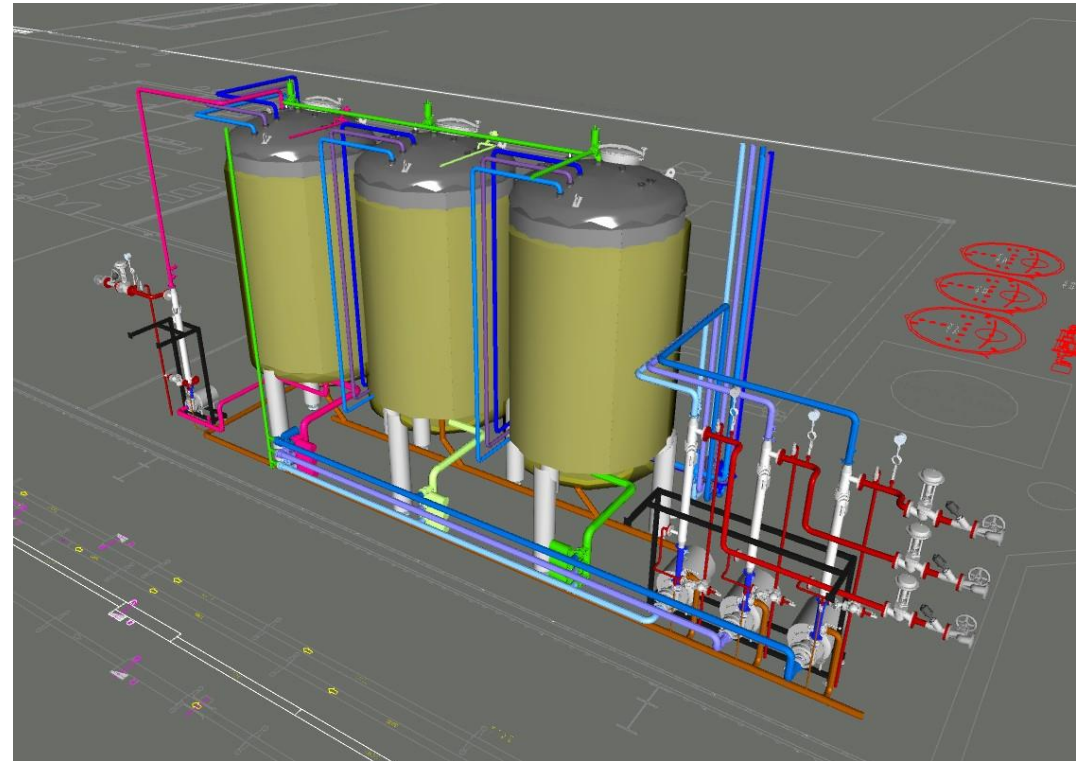
Lung deposit



Yeast

Skids

CIP/SIP



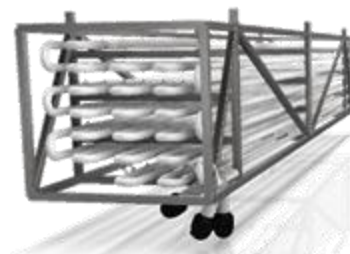
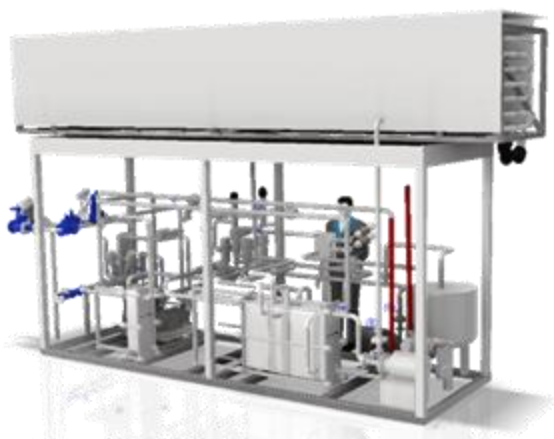
SKID

On-bench filtration equipment



SKID

Pasteurizator/ sterilizator



Orbital welding

Manifold Installations

In Esfera we Weld all figures sensitive to contamination with an orbital robot. This is not only done for aseptic or sterile instalations, but for all of them.



Installations



ESFERA



sothis by nunsys GROUP



Installations



Installations

Thermal treatment installations and valve islands



Exchangers



Turnkey

Food plant



Turnkey

Food plant



Pharmaceutical Installations

PHARMACEUTICAL WATERS:

- PW
- HPW
- WFI
- Pure vapour

PHARMA PRESSED AIR:

- Compressed air. Clean
- Compressed air. Sterile

LAB GASES:

N₂, O₂, Ar, He, Sintheric air



Pharmaceutical Installations



CIP or CIP / SIP installations.

CIP installations for biotechnology.



Fermentators

MATERIALS

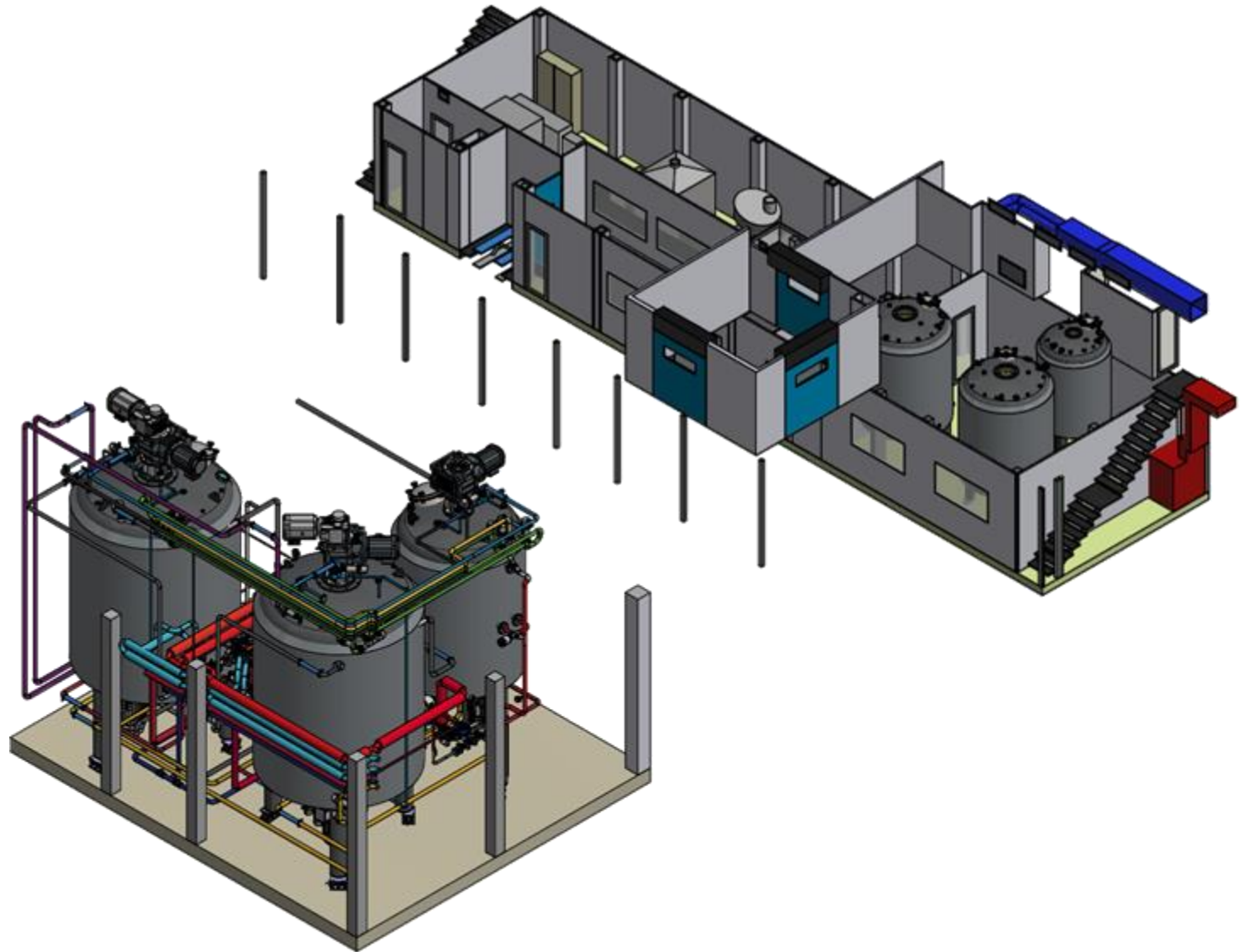
- Parts in contact with the product 316L
- Internal surfaces $R_a < 0,4$
- Simple mechanical lock (dry)
- Double mechanical lock (biological barrier)
- Sterile sampling system



Turnkey– Cosmethics plant

Biocide, hydro-alcohol and cosmetic creams fabrication room

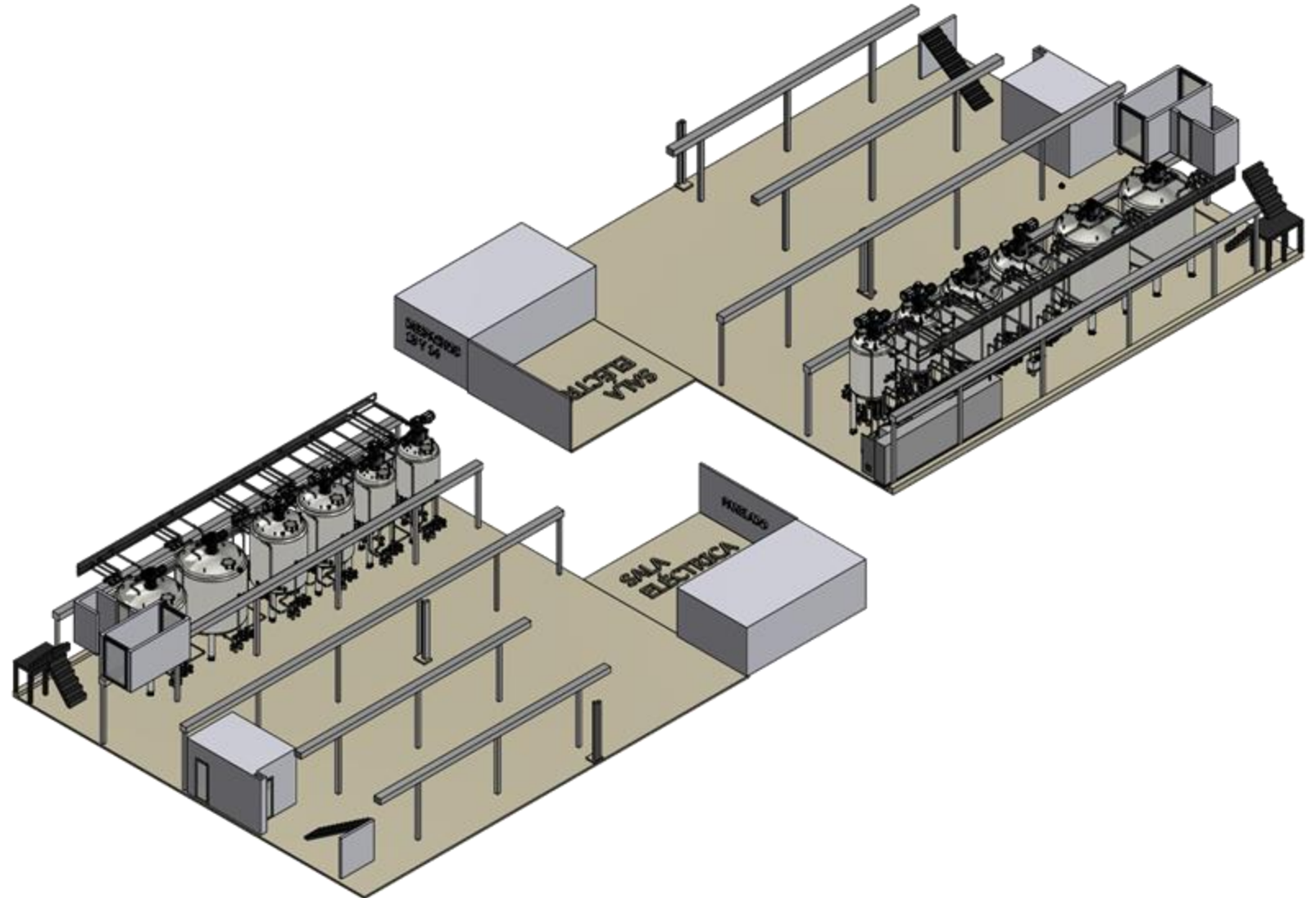
- Two reactors and a fusor.
- Packaging White-room.
- All in explosive atmosphere.
- Turnkey Project, including the engineering, licenses...



Turnkey– Cosmethics plant

New plant for cosmethic fabrication.

- Two 24M3 reactors
- Two 12M3 reactors
- Two 6M3 reactors
- Packaging White-room
- Turnkey Project, including engineering, licenses...

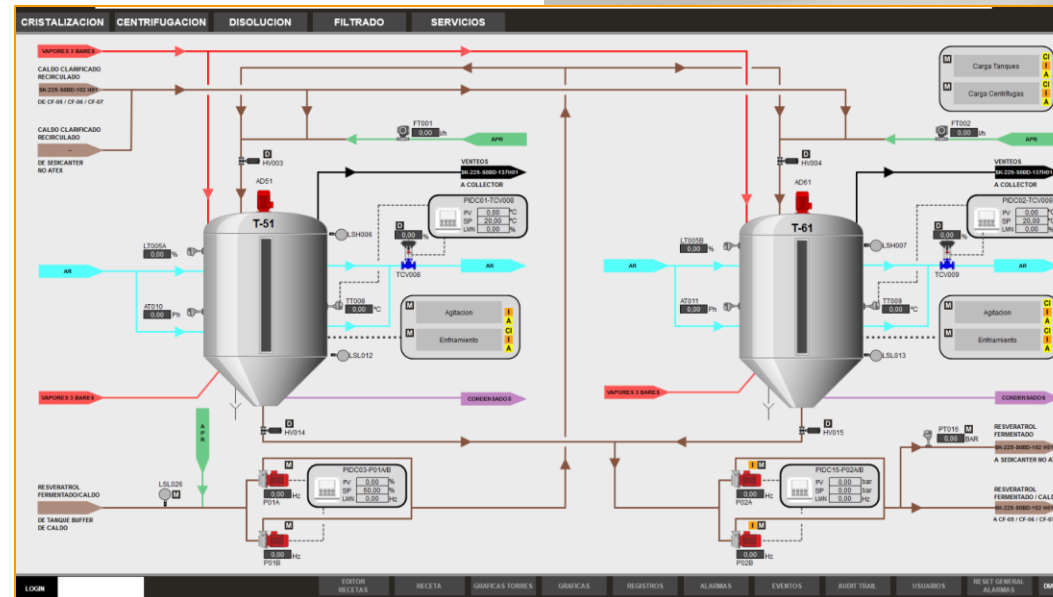


Automatization- PCS7

- Programming according to ISA 88.01

Based on:

- Valve block
- Engine block
- Dosification block
- Interlock
- PID regulator
- Analogical indicator (instrumentation)



Automation – PCS7

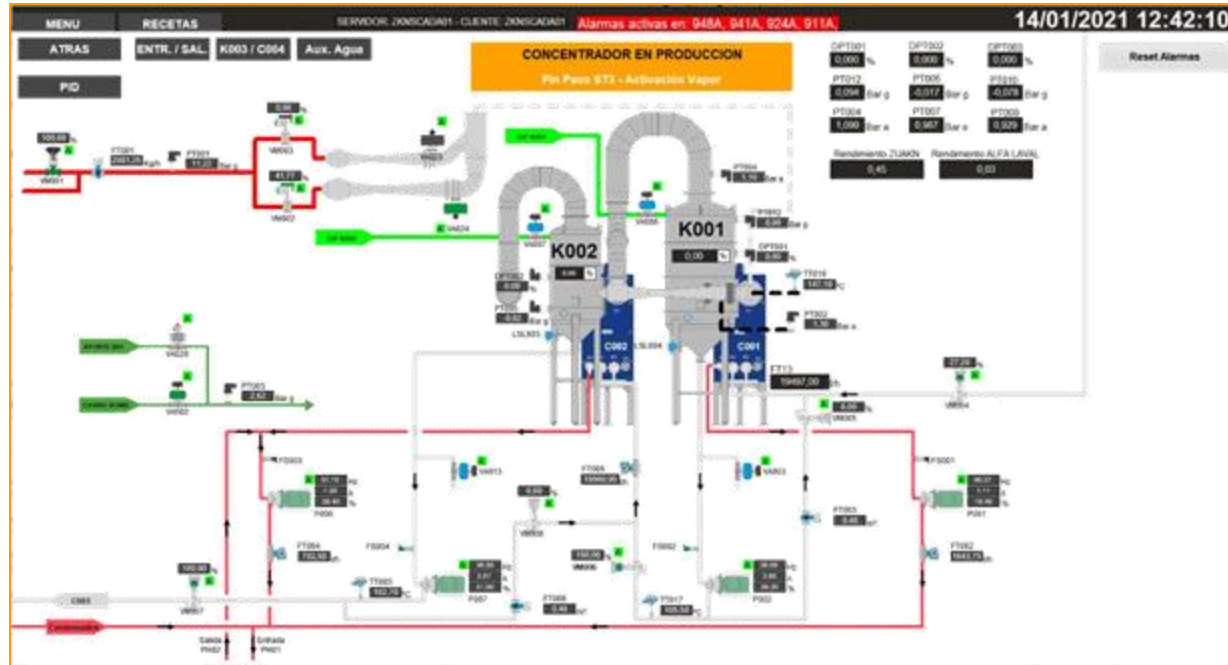
Juice plant programming



ESFERA



sothis by nunsys GROUP

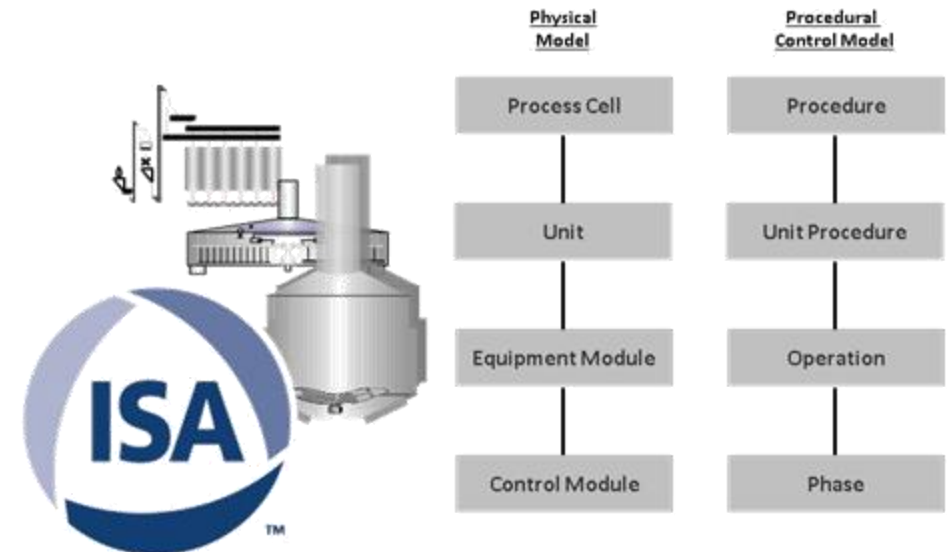


- Programming in conformation with ISA-88.01

Based in:

- Valve block
- Engine block
- Dosification block
- Interlock
- PID regulator
- Analogical indicator (instrumentation)

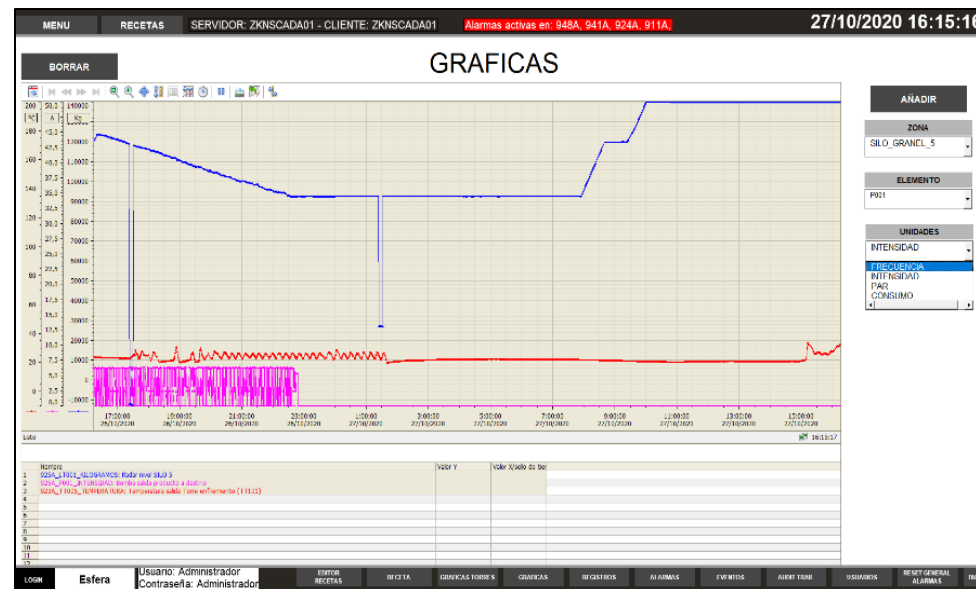
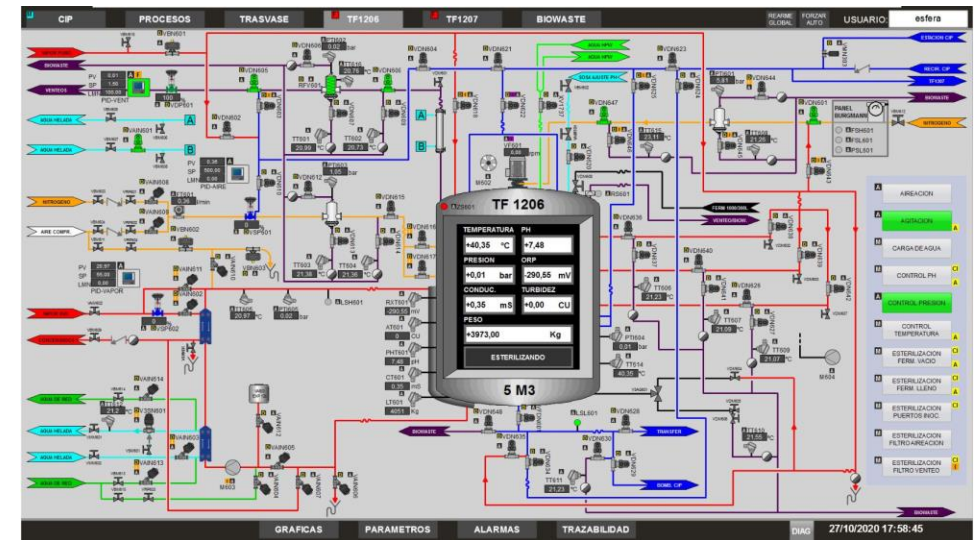
- Adaptation to standard
 - Module types control
 - SFC's
 - BlockIcons and Faceplates



Automation – PCS7 WinCC Standard Sphere

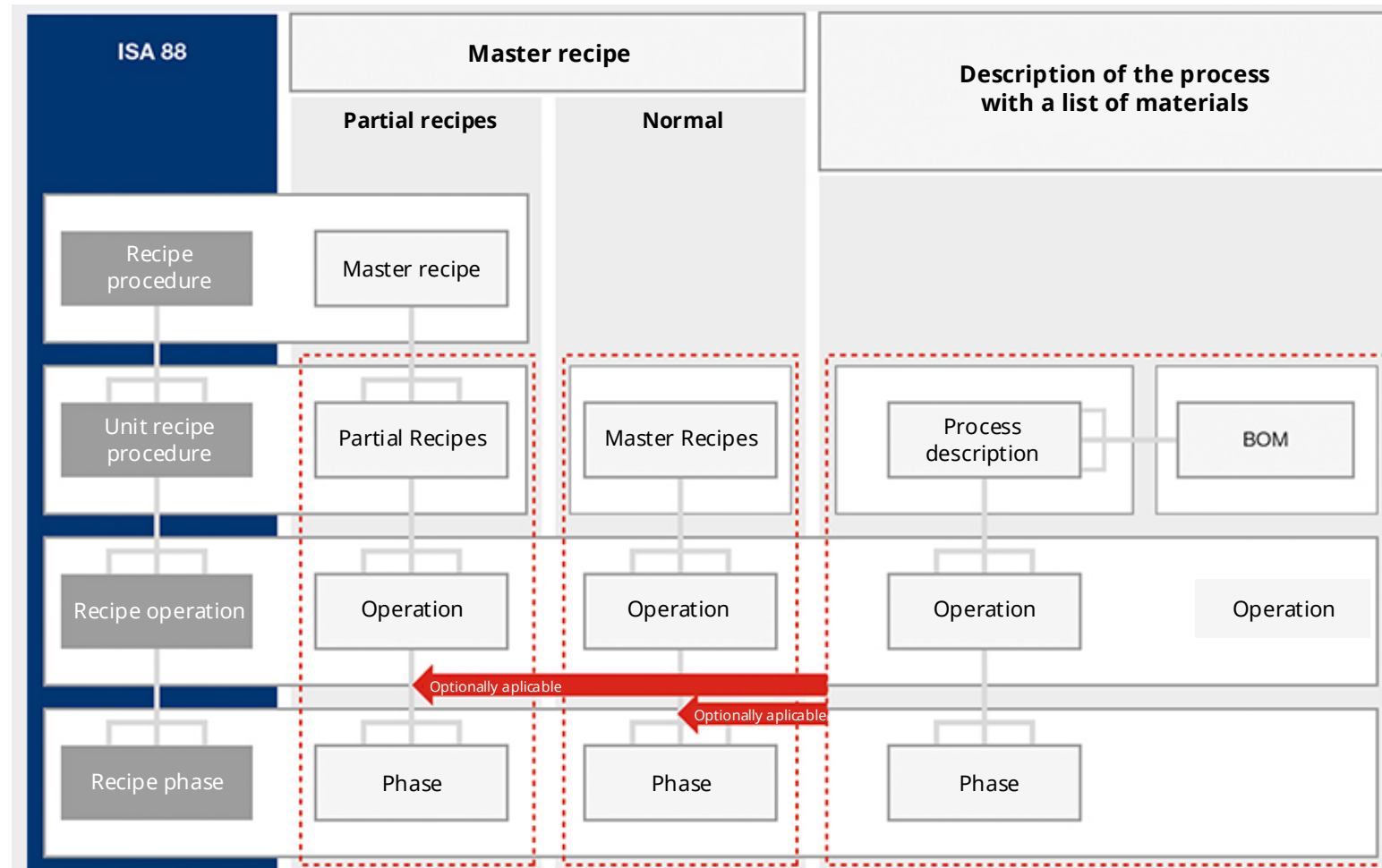
Pharma plant programming

- Programming according to ISA-88.01
- Generation of standards according to client needs.



Automatization – Recipes

Recipe standard based on ISA88



Automation – Recipes

Recipe standard based on ISA88

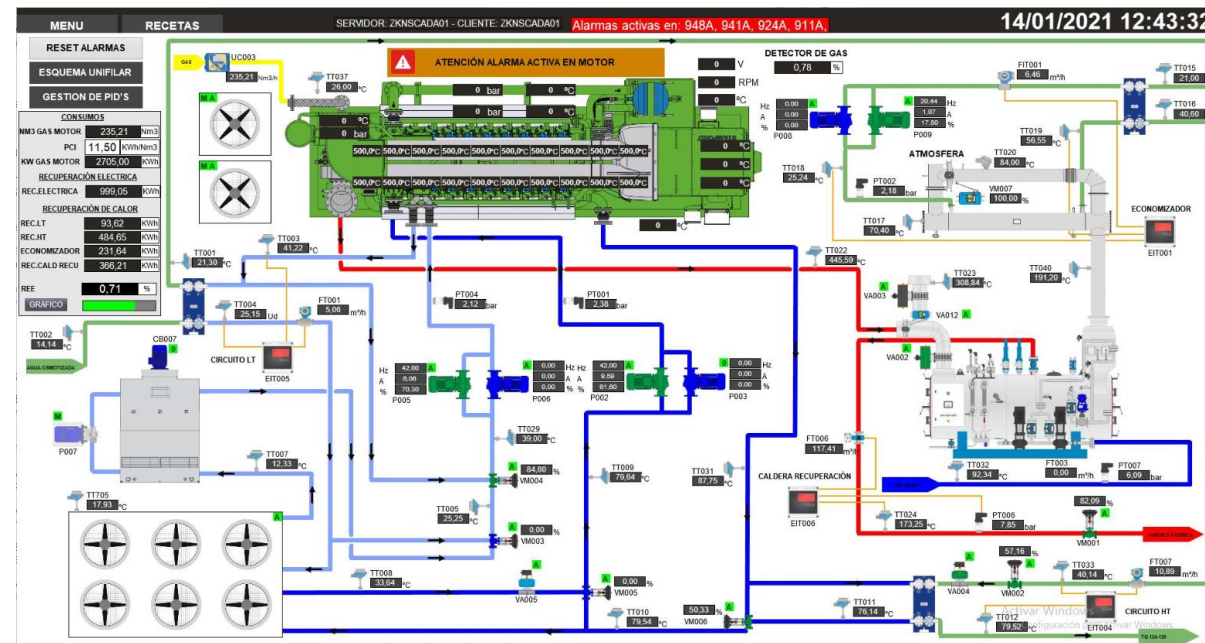
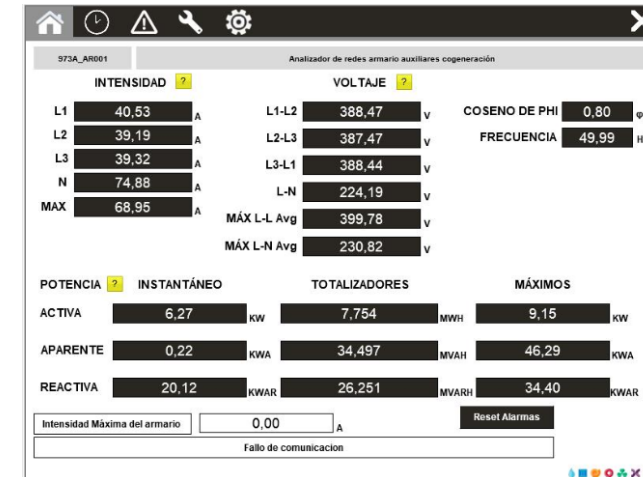
- Recipes made to measure according to customer requirements.
- Based on ISA88
- Batch Systems
- .NET for recipe and report configuration



ESFERA



sothis by nunsys GROUP



Automation – Recipes

Custom Recipe Programming

- Recipes made to measure according to customer requirements.
- Based on ISA88
- Batch Systems
- .NET for recipe and report configuration



ESFERA



sothis by nunsys group

RECETAS	MATERIAS PRIMAS	SERVICIOS	FAB. COSMETICA	FAB. DETERGENCIA	BODEGA COSMETICA	BODEGA DETERGENCIA	LLENADORAS COSM	LLENADORAS DETERG
Filtro por zona: (No filtrar) Escoger alojamiento:								
Refrescar Ejecutar orden								
Órdenes de fabricación liberadas								
OF	Nombre	Tipo de equipo	BSEM	Variante	Lista de materiales	Lote	Cantidad del lote	Zona
OF076036	CHAMPU ALOE VERA 1 K	Sin camisa	BSEM00000054		54-07	19012447	10000,00	Cosmética
OF076036	CHAMPU ALOE VERA 1 K	Con camisa	BSEM00000054		54-07	19012447	10000,00	Cosmética
OF096582	FREGASUELOS LAVANDA	Sin camisa	BSEM00000061		0061-06	2006483	22000,09	Detergencia
OF074755	CHAMPU ANTICASPA 1 K	Sin camisa	BSEM00000070		70-08	19011771	10000,00	Cosmética
OF074755	CHAMPU ANTICASPA 1 K	Con camisa	BSEM00000070		70-08	19011771	10000,00	Cosmética
OF103022	GELAVENA 1 KG	Sin camisa	BSEM00000074		0074-09	2009802	20000,00	Cosmética
OF103022	GELAVENA 1 KG	Con camisa	BSEM00000074		0074-09	2009802	20000,00	Cosmética
OF102498	LAVAVAJILLAS CONCENT	Sin camisa	BSEM00000283		BSEM00000283-06	2009465	10000,00	Detergencia
OF075736	FREGASUELOS TALCO 1	Sin camisa	BSEM00000311		0311-02	19012290	22000,09	Detergencia
OF106091	CREMA CABELLOS SENSI	Con camisa	BSEM00000445		0445-04	2011477	10000,00	Cosmética
OF106091	CREMA CABELLOS SENSI	Fusora	BSEM00000445		0445-04	2011477	10000,00	Cosmética
OF105085	CHAMPU CABELLOS DELI	Sin camisa	BSEM00000450		450-04	2010870	10000,00	Cosmética
Órdenes de fabricación en curso								
OF	Nombre	Tipo de equipo	BSEM	Variante	Lista de materiales	Lote	Cantidad del lote	Zona
OF099197	CHAMPU INFANTIL 1 KG	Sin camisa	BSEM00000010		10-04	2007778	10000,00	Cosmética
OF081420	FREGASUELOS FLORAL D	Sin camisa	BSEM00000055		0055-01	19015298	22000,00	Detergencia
OF094503	FREGASUELOS FLORAL D	Sin camisa	BSEM00000055		0055-01	2005449	22000,00	Detergencia
OF085115	FREGASUELOS MARSELLA	Sin camisa	BSEM00000059		0059-04	2000760	22000,00	Detergencia
OF093577	CHAMPU ANTICASPA 1 K	Sin camisa	BSEM00000070		70-08	2005000	20000,00	Cosmética
OF081211	CHAMPU FRUTAL 1 KG	Sin camisa	BSEM00000071		071-08	19015182	20000,00	Cosmética
OF083338	GEL DERMO 1 KG	Sin camisa	BSEM00000078		0078-08	19016207	10000,00	Cosmética
OF084865	GEL DERMO 1 KG	Sin camisa	BSEM00000078		0078-08	2000625	10000,00	Cosmética
OF079690	CREMA CAPILAR C.NORM	Con camisa	BSEM00000099		0099-04	19014400	8500,00	Cosmética
OF081879	CREMA CAPILAR C.NORM	Fusora	BSEM00000099		0099-04	19013978	10000,00	Cosmética

Automation – Recipes

Custom Recipe Programming

- Recipes made to measure according to customer requirements.
- Based on ISA88
- Batch Systems
- .NET for recipe and report configuration



ESFERA



sothis by nunsys GROUP

10.10.1.202

RECETAS MATERIAS PRIMAS SERVICIOS FAB. COSMETICA FAB. DETERGENCIA BODEGA COSMETICA BODEGA DETERGENCIA LLENADORAS COSM LLENADORAS DETERG

Receta: DETERGENTE GEL VERDE

Exportar Refrescar Peligrosidades

Cabecera de receta

BSEM: BSEM00001681 Tipo de reactor: Sin camisa

Lote nominal: 1000 KG Sección: Detergencia

Familia: Detergentes ropa V. materiales: BSEM00001681-05

Subfamilia: Máquina

Orden de fabricación

OF: OF104746

Lote: 2010710

Cantidad lote: 20000,00 KG

Resultados OF

Equipo: RD01 Riqueza lauril: 24,00 %

Usuario: Fecha inicio: 14/01/2021 7:00:40

Fecha fin: 14/01/2021 12:48:59

Resultados OF Cantidad final: 19845,92 KG

Fase 3

Resultados generales

Fase activa: ☒

Nombre de fase: Adición agua descalcificada

Tiempo estimado: 0 min

Fecha inicio: 14/01/2021 7:04:44

Fecha fin: 14/01/2021 7:16:34

Consigna

Acción realizada: Carga mayoritarios

PRI: BPRI00014140 (678.940000 KG)

Cantidad: 6000,031 KG

Materia prima: AGUA DESCALCIFICA

Peso final: 0 KG

Comentarios: Más...

Resultados consigna

Realizada: ☒

Cantidad: 5999,5293 KG

Peso final: 7492,40 KG

Agitación

Agitación: ☒ Realizada: ☒

Velocidad superior: 25 Hz

Velocidad inferior: 25 Hz

Peso cambio: KG

Temperatura

Temperatura: Realizada: ☐

Acción: Calentar

Temperatura: 25 °C

Alcanzar valor: ☐

Vacio

Vacio: ☐ Realizada: ☐

Presión: -0,5 bar

Alcanzar valor: ☐

Turbina

Turbina: ☐ Realizada: ☐

Velocidad: 100 Hz

Fases activas

Fase	Nombre	Acción
2	Adición agua caliente	Carga mayoritarios
3	Adición agua descalcificada	Carga mayoritarios
4	Agitación de espera	Espera
5	Ajuste manual de temperatura del agua	Acción manual
7	Adición EDTA 40%	Carga minoritarios
8	Adición DBS	Carga mayoritarios
9	Agitación en espera	Espera
10	Adición oleina	Carga mayoritarios
11	Agitación en espera	Espera
12	Adición TRIETANOLAMINA 85%	Carga minoritarios
13	Adición Hidróxido potásico	Carga minoritarios
14	Agitación en espera	Espera
16	Más TEA solo si lleva LutensolAO7	Acción manual
17	Adición de LAURIL	Carga mayoritarios
18	Limpieza del colector	Carga mayoritarios
19	Adición Tensioactivo no iónico	Carga minoritarios
20	Adición agua descalcificada	Carga mayoritarios
21	Agitación en espera	Espera
22	Ajuste pH	Acción manual
26	Control de la temperatura	Acción manual
27	Adición perfume	Carga minoritarios
29	Adición conservante	Carga minoritarios
30	Adición colorante	Carga minoritarios
32	Adición colorante	Carga minoritarios
33	Adición SAL MUERA	Carga mayoritarios

LOG IN ESFERA ALARMAS GRÁFICAS CONDICIONES TRAZA Esfera DESBLOQUEAR RECETAS FORZAR AUT GENERAL REARME GLOBAL 14/01/2021 13:22:11

Automation – Recipes

Programming Reports according to needs.

- Preparation of reports according to the client's needs.
- Production history
- Manufacturing Charts



ESFERA



sothis by nunsys GROUP

10.10.1.202

RECETAS

MATERIAS PRIMAS

SERVICIOS

FAB. COSMETICA

FAB. DETERGENCIA

BODEGA COSMETICA

BODEGA DETERGENCIA

LLENADORAS COSM

LLENADORAS DETERG

Filtro por zona:

Filtro por BSEM:

Filtro por OF:

Aplicar filtros

Fecha de inicio inicial:

14/01/2021

Filtro por equipo:

Filtro por estado:

Limpiar filtros

Fecha de inicio final:

14/01/2021

Filtro por lista materiales:

Filtro por nombre:

Órdenes de fabricación

OF	Estado	Fecha de inicio	Fecha de fin	Nombre	Tipo de equipo	BSEM	Variante	Lista de materiales	Lote	Cantidad del lote	Zona
OF104746	Finalizada	14/01/2021 7:00	14/01/2021 12:48	DETERGENTE GEL VERDE	Sin camisa	BSEM00001681		BSEM00001681-05	2010710	20000,00	Detergencia
OF106085	Finalizada	14/01/2021 3:47	14/01/2021 12:29	CREMA SUAVIZANTE KER	Fusora	BSEM00001035		1035-03	2011474	10000,00	Cosmética
OF106099	Finalizada	14/01/2021 1:33	14/01/2021 8:17	CREMAACONDICIONADOR	Con camisa	BSEM00001421		1421-05	2011481	9000,00	Cosmética
OF105688	Finalizada	14/01/2021 7:36	14/01/2021 7:51	CHAMPU KERATINA LIDL	Batidora fase 2	BSEM00001289		1289-06	2011198	10000,00	Cosmética
OF105688	Finalizada	14/01/2021 7:14	14/01/2021 7:33	CHAMPU KERATINA LIDL	Batidora fase 1	BSEM00001289		1289-06	2011198	10000,00	Cosmética
OF106782	Cancelada	14/01/2021 6:53	14/01/2021 7:04	GEL DE BAÑO SKIN DEF	Con camisa	BSEM00002625		BSEM00002625	2011844	10000,00	Cosmética
OF105686	Finalizada	13/01/2021 19:34	14/01/2021 5:42	CHAMPU KERATINA LIDL	Con camisa	BSEM00001289		1289-06	2011197	10000,00	Cosmética
OF104022	Finalizada	13/01/2021 20:09	14/01/2021 4:04	SUAVIZANTE MICROENCA	Sin camisa	BSEM00001712		1712-01	2010309	40000,00	Detergencia
OF106099	Finalizada	13/01/2021 19:38	14/01/2021 1:14	CREMAACONDICIONADOR	Fusora	BSEM00001421		1421-05	2011481	9000,00	Cosmética
OF106125	Finalizada	13/01/2021 14:10	14/01/2021 1:02	CHAMPÚ COLOR KERATIN	Sin camisa	BSEM00001775		BSEM00001775	2011493	10000,00	Cosmética
OF106127	Finalizada	13/01/2021 9:11	13/01/2021 23:08	ACONDICIONADOR COLO	Con camisa	BSEM00001776		BSEM00001776	2011494	9000,00	Cosmética
OF099759	Finalizada	13/01/2021 15:13	13/01/2021 22:09	JABÓN DE MANOS MELOC	Sin camisa	BSEM00001546		1546-02	2008076	20000,00	Cosmética
OF105686	Finalizada	13/01/2021 20:18	13/01/2021 20:48	CHAMPU KERATINA LIDL	Batidora fase 2	BSEM00001289		1289-06	2011197	10000,00	Cosmética
OF101353	Finalizada	13/01/2021 12:03	13/01/2021 20:13	LAVAJILLAS CONCENT	Sin camisa	BSEM00000283		BSEM00000283-06	2008881	10000,00	Detergencia
OF105686	Finalizada	13/01/2021 19:51	13/01/2021 20:12	CHAMPU KERATINA LIDL	Batidora fase 1	BSEM00001289		1289-06	2011197	10000,00	Cosmética
OF104758	Finalizada	13/01/2021 11:08	13/01/2021 18:58	DETERGENTE GEL VERDE	Sin camisa	BSEM00001681		BSEM00001681-05	2010716	20000,00	Detergencia
OF104016	Finalizada	13/01/2021 11:40	13/01/2021 18:15	SUAVIZANTE MICROENCA	Sin camisa	BSEM00001711		1711-01	2010306	40000,00	Detergencia
OF101812	Finalizada	13/01/2021 6:04	13/01/2021 16:45	GEL DE ARGAN	Sin camisa	BSEM00001206		1206-05	2009117	20000,00	Cosmética
OF106127	Finalizada	13/01/2021 4:02	13/01/2021 15:57	ACONDICIONADOR COLO	Fusora	BSEM00001776		BSEM00001776	2011494	9000,00	Cosmética
OF106125	Finalizada	13/01/2021 14:49	13/01/2021 15:12	CHAMPÚ COLOR KERATIN	Batidora fase 2	BSEM00001775		BSEM00001775	2011493	10000,00	Cosmética
OF106125	Finalizada	13/01/2021 14:11	13/01/2021 14:38	CHAMPÚ COLOR KERATIN	Batidora fase 1	BSEM00001775		BSEM00001775	2011493	10000,00	Cosmética
OF104742	Finalizada	13/01/2021 4:10	13/01/2021 12:05	CHAMPU CABELLOS GRAS	Con camisa	BSEM00000451		451-04	2010708	10000,00	Cosmética
OF106602	Finalizada	13/01/2021 4:36	13/01/2021 11:06	GEL ROSA SUAVE AMALF	Sin camisa	BSEM00000618		0618-06	2011728	18000,00	Cosmética
OF107687	Finalizada	13/01/2021 8:31	13/01/2021 11:04	FREGASUELOS FLORAL D	Sin camisa	BSEM00000055		0055-01	2100964	19000,00	Detergencia
OF102601	Finalizada	13/01/2021 3:53	13/01/2021 10:57	JABÓN DE MANOS 0% 1K	Sin camisa	BSEM00001541		1541-02	2009516	20000,00	Cosmética

Automation – Network Architecture



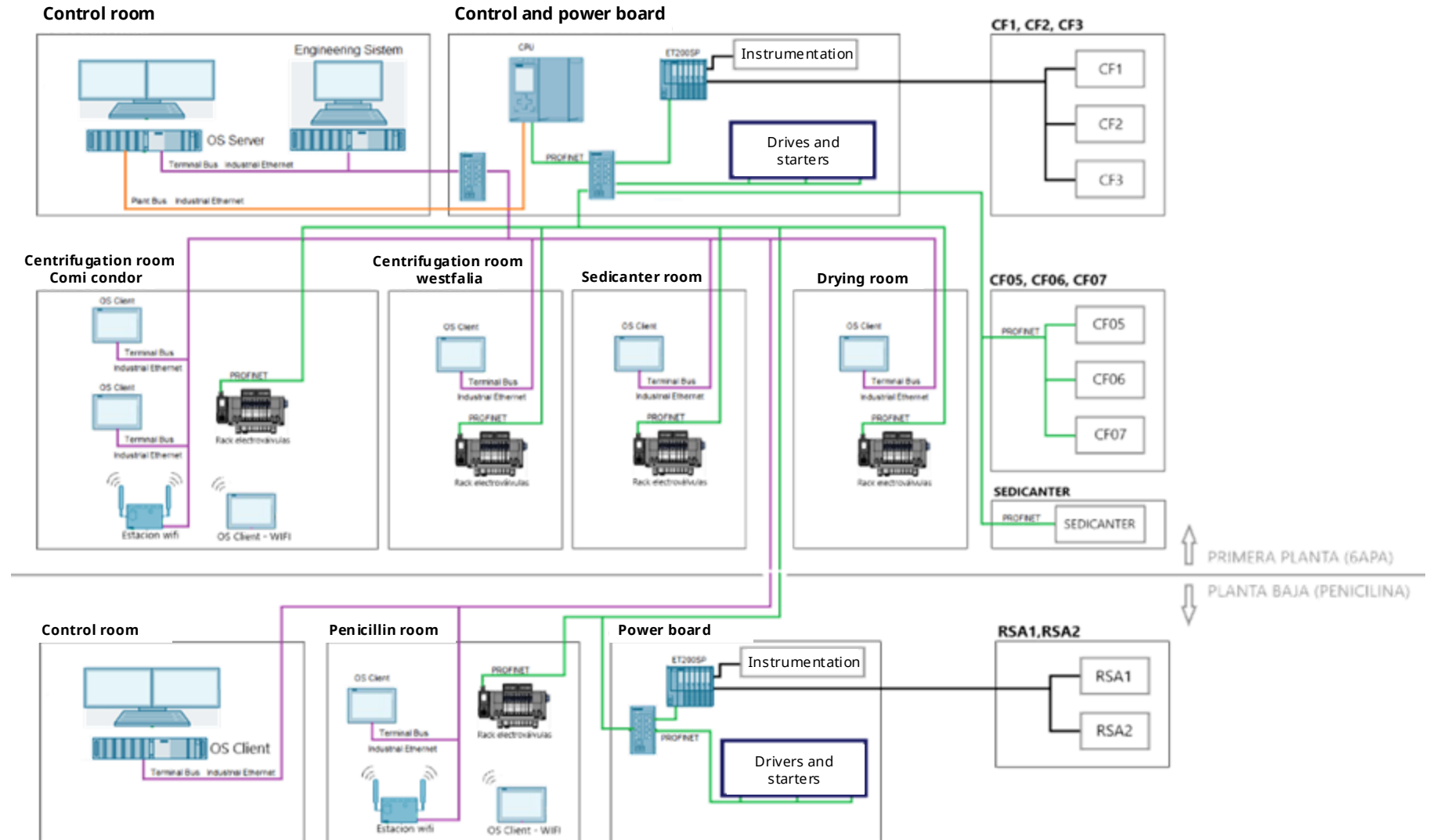
ESFERA



sothis by nunsys group

Plant programming

- Preparation of reports according to the client's needs..
- Production history
- Manufacturing Charts





sothis
by **nunsys**
GROUP[®]

sothis.tech