



# Sensory ALL™

[www.sensoryall.in](http://www.sensoryall.in)

## SERVICE CATALOG



**Making  
the  
Invisible  
-Visible**

**Registered Company:** AxcesAble Designs LLP (LLPIN: ABB-3232)

**Address:** 29, Jati Colony, Rambagh, Indore (M.P.) India- 452007

**Email:** [info@sensoryall.in](mailto:info@sensoryall.in) **Website:** [www.sensoryall.in](http://www.sensoryall.in)



# SERVICES

## ABOUT US

AxcesAble Designs LLP is a forward-thinking accessibility startup on a mission to create accessible, inclusive and safe spaces and experiences for everyone.

Our revolutionary offering, **Sensory ALL™** is India's first social impact startup dedicated to creating accessible & neurodiverse-friendly environments. We provide evidence-based, scientifically driven solutions that transform spaces into inclusive, sensory-safe areas, empowering and supporting neurodiverse individuals.

Who do we work with?



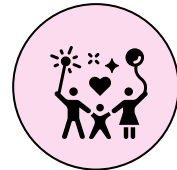
Workplaces



Schools



Homes



Events

What do we provide?

Sensory Products & Modifications



Sensory Kit



NEURA™  
Based  
Modifications



NeuroAccess  
Audit



Sensory  
Rooms



AAC  
Signages



Sensory Map



Training  
Programs



Education

## OUR CLIENTS



X



Adobe for all.



teradata.



# 1 SENSORY KIT

A sensory kit is a **portable, self-help toolkit** designed while keeping in mind the diverse sensory needs of people.

Our Sensory Kit contains 9 sensory tools curated to provide tactile, visual, olfactory, auditory, and cognitive sensory experiences.

This kit can be used for sensory exploration as well.



I feel at ease.

# IMPACT

Sensory Kits and  
their unsaid need in  
Public Festivals



"Having a Sensory Kit is  
like having a first-aid kit. It  
is very crucial!"



I feel at  
ease.



# NEURA™

## Based Modifications

NEURA™ is a proprietary framework developed by Sensory ALL™, known as the **Neuro Environmental Universal Design User Responsive Assessment**.

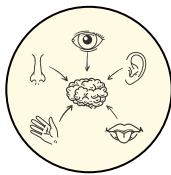
This comprehensive framework evaluates both the environment and its inhabitants, encompassing spatial analysis, sensory analysis, sensory profiling, and user feedback. Together, these elements provide a well-rounded understanding of how spaces can impact our senses and can be modified for neurodiverse individuals.



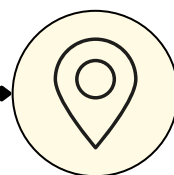
Homes

**NEURA™ for Homes:** Tailored for residential spaces, this evaluation ensures that homes are designed or modified to meet the specific sensory and emotional needs of the children or adults with neurodivergence, within their personal spaces.

### Our Process:



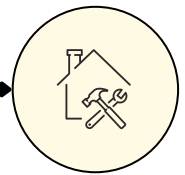
Sensory  
Profiling



Home visit



Spatial and Sensory  
Environment Analysis



Home Modification  
Recommendations



Schools

**NEURA™ for Schools:** Curated for educational institutions, this evaluation helps create learning environments that are supportive, accessible, and conducive to the success of neurodiverse students. A NeuroAccess Audit is conducted for the evaluation.



Workplaces

**NEURA™ for Workplaces:** Focused on professional environments, this service enhances workplace design to support productivity, inclusivity, and well-being for neurodiverse employees. A NeuroAccess Audit is conducted for the evaluation.



NeuroAccess  
Audit



I feel like I belong.

# NeuroAccess Audit

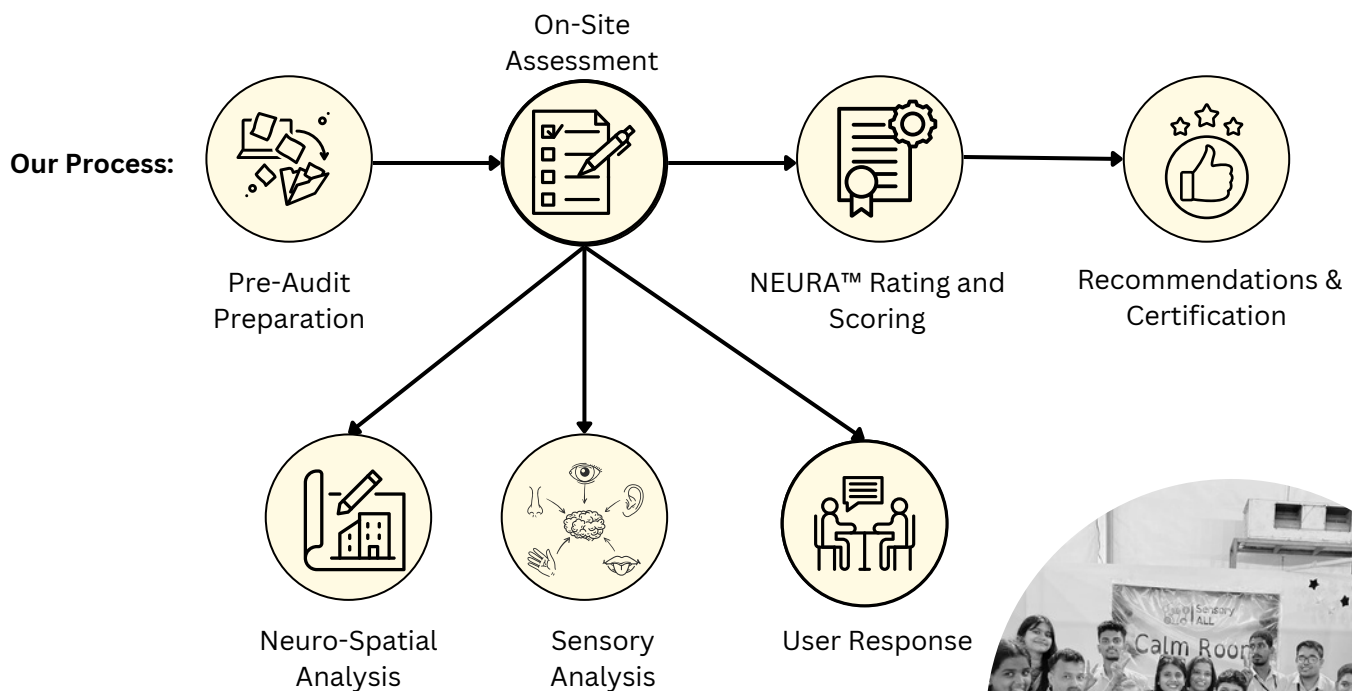
NeuroAccess Audit is a specialized evaluation process within the NEURA™ framework, designed to assess the accessibility, inclusivity, and overall supportiveness of public environments, such as workplaces and schools, for neurodiverse individuals. This audit systematically examines how these spaces accommodate the unique needs of people with conditions like autism, ADHD, sensory processing disorders, and other neurological variations.

## Why NeuroAccess Audit?

15-20% of the world's population exhibits some form of neurodivergence. The lack of standards for neuro-accessibility, awareness, and policies for neuro-inclusive environments creates a significant barrier to inclusion for neurodivergent individuals in society.

## Methodology

Sensory ALL's NeuroAccess Audit is the first of its kind in India, setting a new standard for accessibility evaluations.



I feel like I belong.

# SENSORY ROOMS

## PERMANENT

Our Sensory Rooms aim to foster sensory regulation, stress reduction, and calm. Ideal for hypersensitive individuals or those needing a tranquil sensory space, we offer various options tailored to your goals, space, and budget.



### **Sensory ALL™ Therapy**

A therapeutic space designed with occupational therapy (OT) in mind, focusing on sensory interventions to aid in sensory processing and regulation.



### **Sensory ALL™ Essential**

A foundational sensory room setup, perfect for those looking to incorporate budget-friendly essential sensory elements.



### **Sensory ALL™ Interactive**

An engaging space with adaptive equipment that responds to touch, sound, and movement, perfect for fostering active sensory exploration and interaction.



### **Sensory ALL™ Immersive**

A fully immersive sensory experience using advanced technology to create a multisensory environment for deep engagement and transformative experiences.



I feel safe.

# 4 SENSORY ROOMS

## PORTABLE

Our Portable Sensory Rooms provide the benefits of a permanent setup with the added convenience of mobility. They are perfect for temporary locations such as events or spaces with limited room, offering a flexible and effective sensory environment wherever needed.



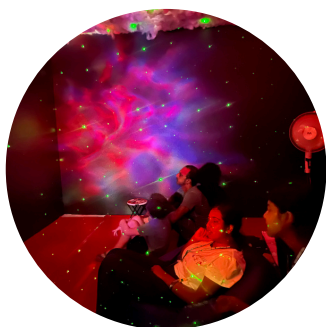
### **Sensory ALL™ Pod**

A compact, portable sensory space that sets up easily anywhere, providing a controlled environment for sensory breaks in schools, events, or small homes.



### **Sensory ALL™ Calm**

This room setup focuses on creating a calming atmosphere with soothing lights, gentle sounds, and soft textures, perfect for stress reduction on the go.



### **Sensory ALL™ Glow**

A vibrant and visually stimulating room setup that uses glowing elements, to create a visually rich environment. It's ideal for sensory stimulation and visual exploration in various settings.



I feel safe.

# IMPACT

Sensory Rooms being an escape in overwhelming environments.



"Access for us does not mean just ramps. It means sensory spaces"



I feel safe.



# AAC Signages

AAC (Augmentative and Alternative Communication)-based signages are visual tools designed to assist individuals with communication difficulties by providing clear, accessible, and understandable information through various forms of symbols and text.

AAC-based signages can be placed in educational settings, public spaces, workplaces, residential areas, and recreational areas, making information and communication accessible to those who need it.

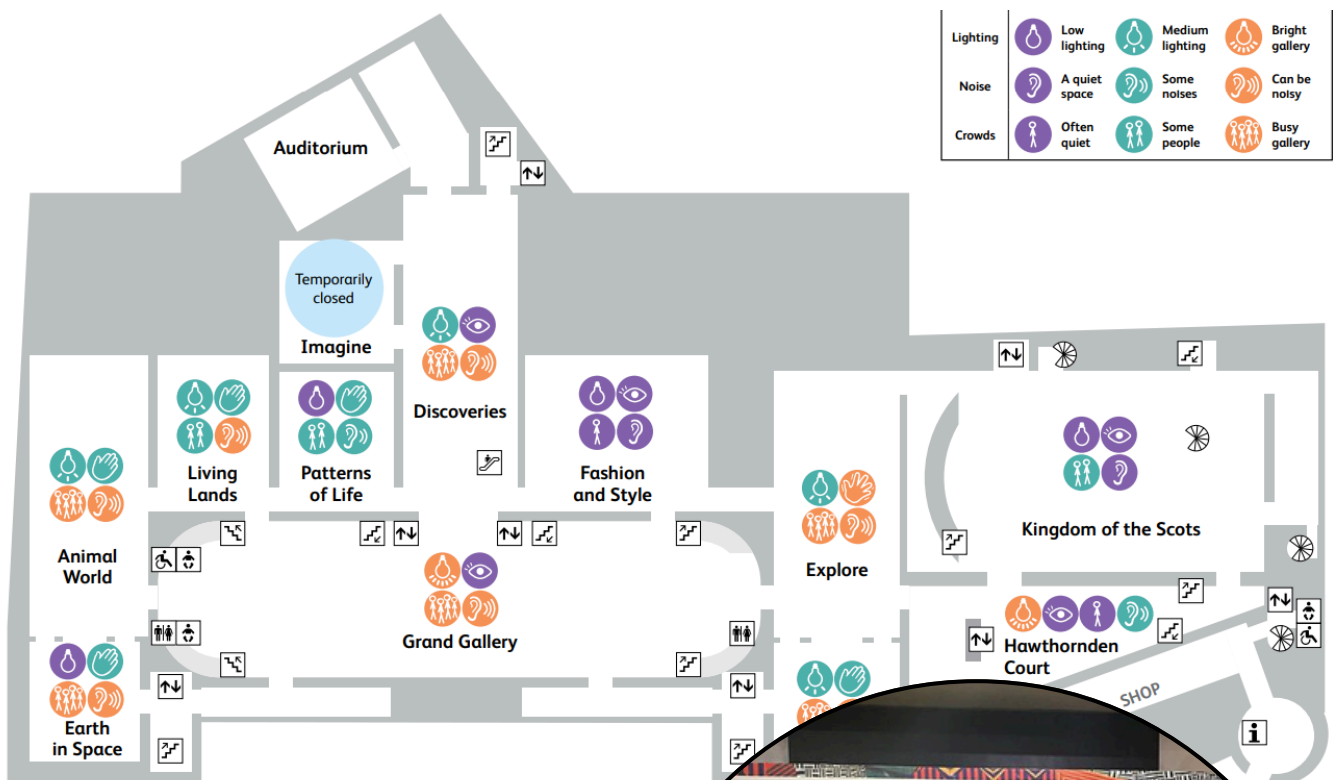


I feel informed.

# SENSORY MAP

A sensory map improves the predictability of a space by providing sensory information about the space. It divides the entire area into distinct sensory zones & offers details about areas with loud noises, strong smells, bright lights, and more.

We employ a participatory approach, involving qualitative sensory mapping & interviews with diverse participants to develop comprehensive sensory maps.



I feel prepared.

# SENSITIZATION & TRAINING PROGRAMS

Training is central to our mission. We provide a range of training programs aimed at helping organisations & businesses understand disability, neurodivergence, and accessibility, empowering them to better include these aspects in their practices.



Our training programs include:

1. Understanding Disability & Neurodivergence
3. Accessibility & Reasonable Accommodations
4. Neurodiverse-friendly Environments
5. Sensory Environment and Modifications
6. Autism at Work & Hiring



I feel aware.

# EDUCATION

We advocate that education is the catalyst for fostering change in disability inclusion. Therefore, we offer diverse modules aimed at educating designers and architects on universal design principles, empowering them to create more inclusive environments.



Our modules cover a range of topics including:

Universal  
Design  
Principles

Inclusive  
Design  
Thinking  
Methods

Accessibility  
Audit  
Methods

Accessibility  
and  
Architecture

Environmental  
Psychology in  
Design

***So proud of my  
students!***



I feel aware.

# PEOPLE WHO MAKE US GREAT!

”

This is the first time I've been to a Sensory Room & I feel Included. I really appreciate this initiative. As an autistic ADHD woman, I find most spaces exclusionary. Thank you for having such a warm and welcoming place.

**Aditi**

Co-founder of Much Much Spectrum

>



”

I am a person with bipolar disorder and I get panic attacks uninvited. This sensory bag offers a variety of tools that help me calm down, especially the fragrances and fidget toy. This is not just useful for me because I have a diagnosis but for everyone who is undergoing stress and has some anxiety issues.

**Sangeeta Param**

Mental Health Advocate

>



”

This Sensory Room is brilliant! Every company should set up a room like this.

**Vidhya**

Capgemini

<



## CONTACT US



[info@sensoryall.in](mailto:info@sensoryall.in)



[www.sensoryall.in](http://www.sensoryall.in)



+91-8320663383

**Registered Company:** AxcesAble Designs LLP (LLPIN: ABB-3232)

**Address:** 29, Jati Colony, Rambagh, Indore (M.P.) India- 452007

