



Corporate Presentation

"Steel Solutions, since 1963"

2024



ebroacero

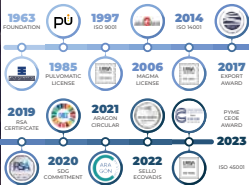
- 
- A dark, industrial background featuring a bright, glowing molten metal stream being poured into a mold, creating a large splash of sparks and a cloud of smoke. The scene is dimly lit, with the primary light source being the intense heat of the metal.
- 1** Company
 - 2** Who we are
 - 3** Products
 - 4** Sectors
 - 5** Sales destination
 - 6** Customers
 - 7** Technical capacity
 - 8** Quality and Environment
 - 9** Certificates

Company

1



*"Manufacturing steel and alloyed steel castings **since 1963**"*





Zaragoza, a strategic location
for **Spain** and **Europe**



**Industrial
Park**

Calle Argualas 20
50012, Zaragoza, (Spain)

Who we are



2



Ebroacero S.A. was founded in 1963 and since then it has dedicated its activity to the **manufacturing of steel castings and alloyed Steel castings for all types of industrial applications.**

Our main objective is customer satisfaction by supplying castings with the required quality, standards within the agreed deadlines and under high competitive conditions.

Ebroacero S.A. has modern means of production and control and a highly qualified technical team, whose training is constantly updated.

We serve the needs of **medium-heavy and heavy parts** of our national and international customers, including high-tech equipment manufacturers.

Products

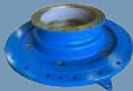
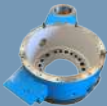
3

OFFSHORE APP

NAVAL

DREDGING

SUGAR INDUSTRY



POWER GENERATION

CEMENT & MINING IND.

FLUID CONTROL



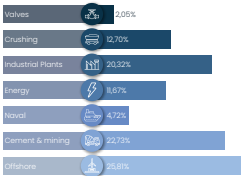
Sectors

4





Offshore sector represents the highest (%) of **invoicing**



Sales destination

ebroacero

5

We are specialized in manufacturing **cast steel** and **alloyed steel** parts for many industrial applications

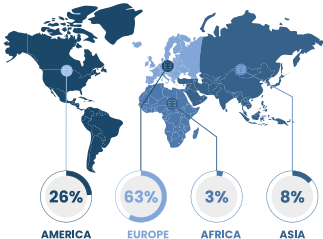
48%

Export

52%

National

We export to
more than
30 countries

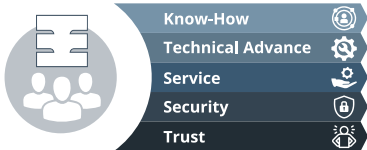


A close-up, high-angle shot of a white table where several people are working. Their hands are visible, interacting with various documents and diagrams. One person is writing on a document with a blue pen. Another person's hand is pointing at a diagram. The documents include circular flowcharts, a table with columns, and a green document with a large number '6'.

Customers

6

Ebroacero a strategic partner for our customers

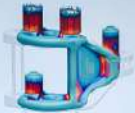


More than **250 customers** from all over the world trust in our company for the development of their projects





Technical Capacity



7



Technical Office

Our Engineers Team always at the service of our Customers to achieve high quality steel castings:

- Dimensional calculations, raisers locations and casting systems.
- Preparing drawings.
- Definition of the most suitable moulding process.
- Indicators on speed, melting temperature and protection of mould areas.

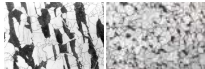
Our Team collaborates directly and advises our customers on the design of parts to ensure the highest levels of quality at lowest cost.

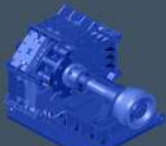


Materials

Carbon Steel and low Alloy Steel	14.000
Medium Alloy Steel	12.000
Stainless Steel (Austenitic & Martensitic)	8.000
Heat Resistant Steels	9.000
Manganese Steel	9.500

Max. Weight/Unit casting (kg)





Technology/ Foundry Studies

Commitment to technology:

- Design and simulation software.
- 3D Autodesk Inventor.
- MAGMA simulation with stress module.
- 2D Design (machining), AutoCad.
- Collaboration agreements with European material research centres
- Continuous training courses for the technical staff.



Moulding

Handmade	Large & big sized parts	7000 x 7000 (shell moulds and pits)
Machine	In series	800 x 650 (4 machines)
Shell Moulding	Precision & Lightweight	500 x 500 (plates)

- Core Shooter machines.
- Non-stop sand mixers (silica, chromite, olivine and zirconium).
- Recovering of silica and chromite sands.





Melting

We are able to melt castings up to 14 Tm in different materials and quality requirements.

Qty	Type	Process
2	Electric Arc Furnaces	Basic process and hydraulic regulation with the injection of inert gases from the bottom





Heat Treatments

Furnaces	Dimensions (mm)	Max. Temp.(°C)	Max. Load.(Tons)
HT-1	4000 x 3500 x 1970	1200	20
HT-2	6400 x 3300 x 1700	1000	30
HT-3	5000 x 1400 x 1400	1200	7
HT-4	a 6200 x 2500	1000	30

- Annealing
- Stabilizing
- Water and air quenching
- Tempering
- Stainless steel and manganese steel hyperquenching
- Post Weld Heat Treatment





Machining

Machine	Max. Capacity (mm)	Features
3 CNC vertical Lathes	Up to Ø 8.200 x 2.620	/
Drill	3.000 x 2.300	Ø Max. 90
Gear hobbing machine	Ø 7.060	Height 2.200 (straight teeth)
	Ø 7.020 (with worm hob Ø 420)	Max. Module 50
2 milling machines	12.000 x 1.250 x 3.000	Rotative table: 24 Tm
1 Boring machine	X:2.800, Y:3.000, Z:800, W:2.000	Faceplate: 12Tm Head 90°





Laboratories

- **Chemical Analysis Lab** by emission spectrometry
(2 Equipment SPECTROLAB).
- **Mechanical Testing Laboratory**
(1 Universal Testing Machine, HOYTOM).
(1 Charpy Pendulum, HOYTOM).
(2 Portable Durometers, EQUOTIP).
(1 Stable Durometer).
- **Metallographic Laboratory**
(Upgrades x100, x200, x500, x1000).
- **Sand Laboratory**



Quality and environment Mgnt.

8



Quality Control

Non Destructive Testing:

- Visual Testing
- Ultrasonic Testing (UT)
- Magnetic Testing (MT)
- Penetrant Testing (PT)
- Radiologic Testing (RT)

All our NDT staff is certified according:
EN ISO 9712:2012 with levels 2 & 3.





Quality Control

Ultrasonic (UT)

- 2 Machines (SISTECAN 240 & USM36)
- Angle and normal probes



Magnetic (MT)

- 1 Portable machine 1.500A
- 1 Stable machine 6.000A
- 2 Magnetic yokes



Penetrant (PT)

- Removed by water and solvent



Radiologic (RT)

- Subcontracted

Certificates



9

Quality Management

ISO 9001:2015



Environment

ISO 14001:2015



Health and safety

ISO 45001:2018



Other certificates



The background is a dark, industrial scene, possibly a steel mill, with bright sparks and smoke rising from the ground. In the lower right foreground, a silver laptop is open, displaying a website with a header image and a central green square graphic. The overall atmosphere is gritty and industrial.

Conect!

@ebroacero

*Steel solutions
since 1963*

| **in**