



Mechanical Engineering Industrial Process Engineering



ANALISIS-DSC

PROCESS AND MECHANICAL ENGINEERING

March 2026

ANALISIS-DSC



Company:

We are a SME engineering service company specialized in **Mechanical** and **Industrial Processes** using **CAE** (Computer Aided Engineering) software tools.

Engineering services such as:

- Basic Engineering.
- Failure Engineering.
- Analysis and Optimization of Industrial Processes.
- Scale-up/Scale-down Industrial Processes.
- Ventilation Analysis and Optimization (Climatization and Fire Safety).

Our history:

- **2002** company was founded, as distributors of CAE software.
- **2006** we start offering mechanical and industrial processes engineering services using **CFD** (Computational Fluid Dynamics) software tools.
- **2009** we broaden our engineering services using **FEA** (Finite Elements Analysis), **DEM** (Discrete Elements Modelization) y **SES** (Subway Environment Simulator) software tools.

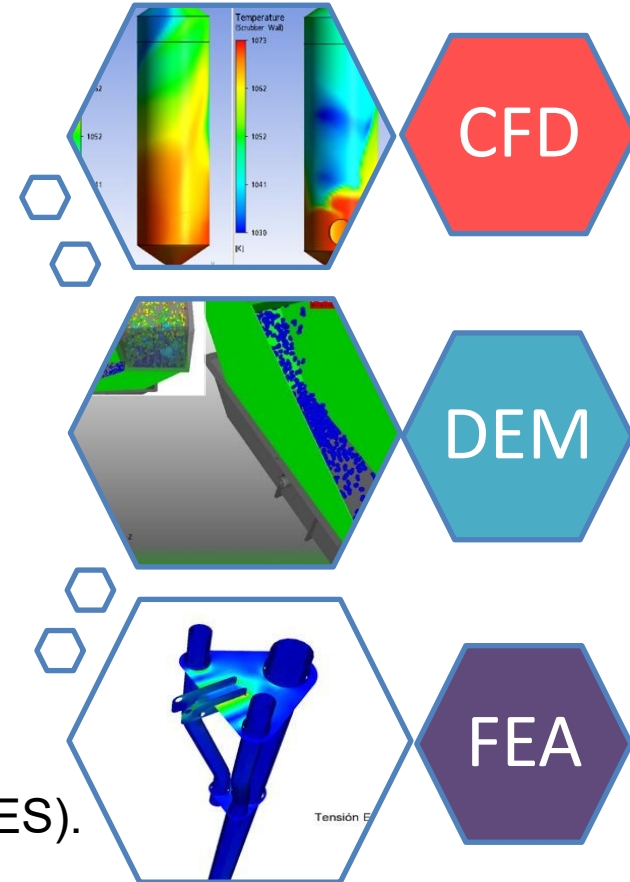
Engineering Services

• Applications

- Mechanical-Structural.
- Fluid dynamics.
- Thermodynamics.
- Granular Flows.

• Tools:

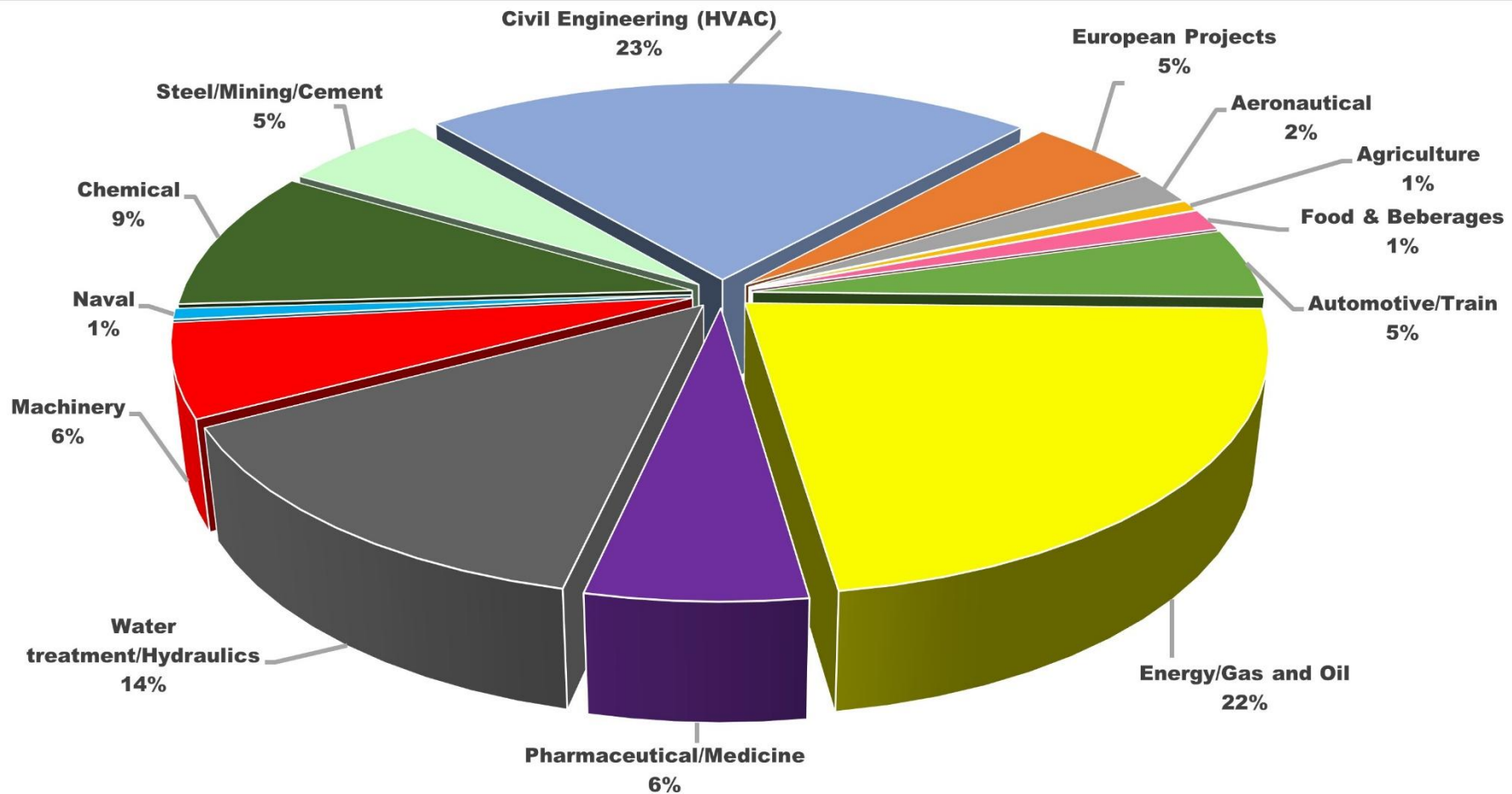
- CAD.
- CAE:
 - Computational Fluid Dynamics (CFD, SPH).
 - Finite Element Analysis (FEA).
 - Discrete Element Method (DEM).
- Specific Tools (Subway Environment Simulator, SES).



Engineering Services



Over 250 projects developed for over 190 customers.



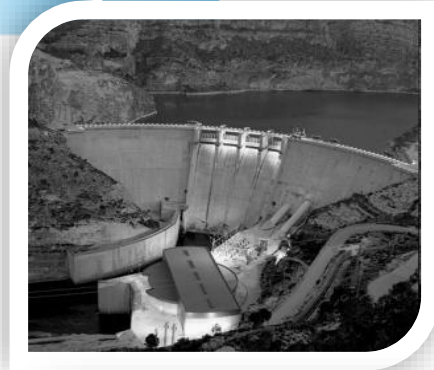
Engineering Services

Optimization/Improvement of Industrial Processes:

- Pressure Drop Reduction.
- Heat Transfer Improvement.
- Ventilation and Climatization Studies.
- Multiphysics (gas/solid/liquid) mixing time.
- Chemical reactions.
- Aerodynamic Loads Reduction.
- Gas distribution, combustion and particle emission.
- Solid particle transport and drying.

Design of Industrial Equipments/Products:

- Prototype Development.
- Design Scale-up.
- Basic Design Engineering.
- Experimental results validation.



Engineering Services

Damage equipment analysis:

- Erosion.
- Breakdown.
- Thermo-mechanical stresses.
- Corrosion.
- Cavitation.
- Vibration.
- Fatigue.

Contingency analysis (Incidents/Accidents):

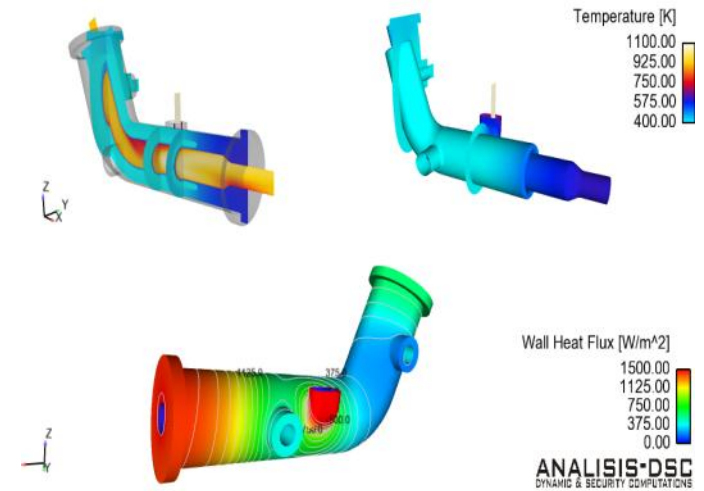
- Particle and contaminants emissions.
- Explosions.

Fire safety in civil engineering:

- Fire safety systems (Temperature and smoke dispersion).
- People evacuation.

Ventilation/climatization in civil engineering:

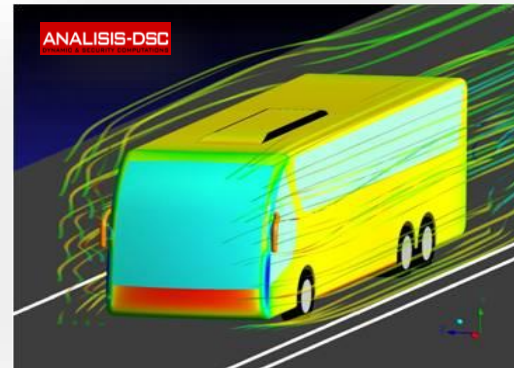
- Comfort evaluation / Ventilation systems.



Customers By Sectors

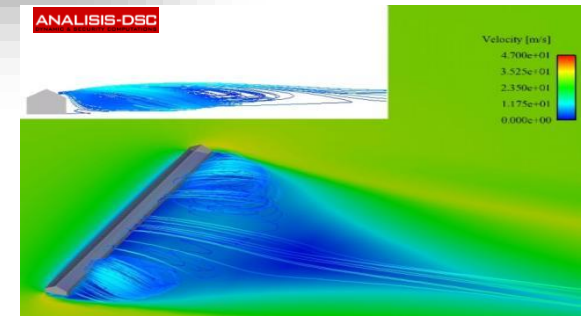
Aerospace / Aerodynamics:

- Veolia.
- Sacyr Construccion.



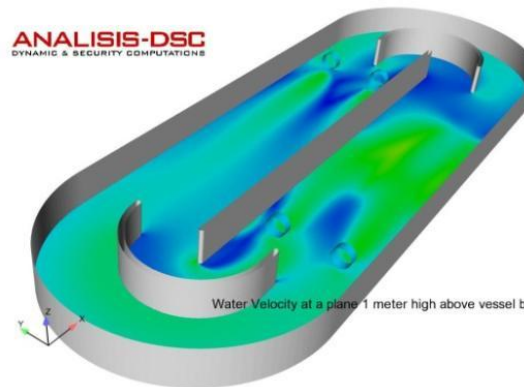
Automotive / Railway:

- CAF.
- Teknia R&D.



Food and Beverages:

- BA Glass.
- Delta Cafés.



Agriculture:

- Inst. Valenciano Inv. Agrarias.
- Ulma Agrícola.

Hydraulics / Water Treatment:

- Aqualia.
- Inima.
- Sacyr.
- Sener.

Customers By Sectors

Steel / Cement / Mining:

- Lechler.
- Minera Santa Marta.

Machinery:

- John Cockerill Hamon.
- Soler & Palau.

Turbomachinery:

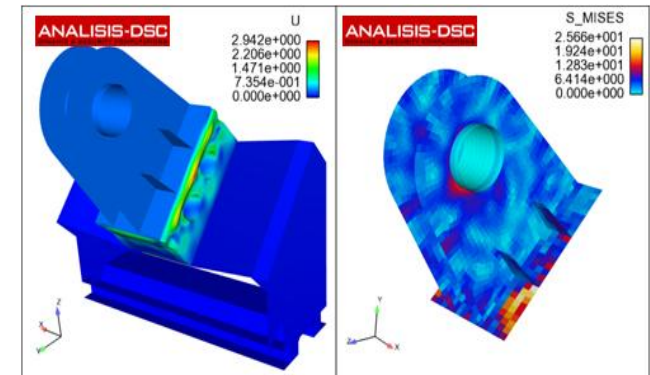
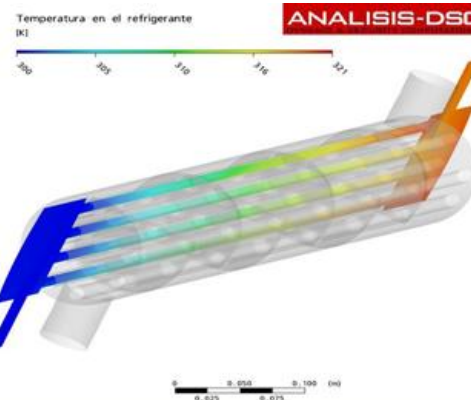
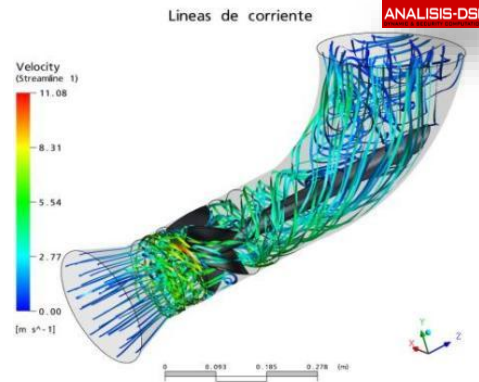
- Metalast.
- Soler & Palau.

Pharmacy / Medicine:

- Antibióticos.
- Pfizer.

Energy / Oil:

- ABB Power Systems.
- AMEC Foster Wheeler Iberia.
- Deerns.
- H2Site.
- Motor Oil.
- Total.
- Wood PLC.



Customers By Sectors

Naval:

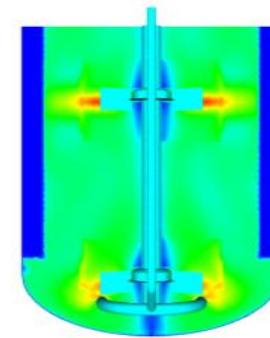
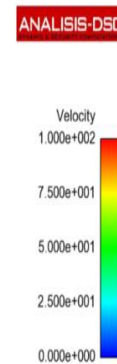
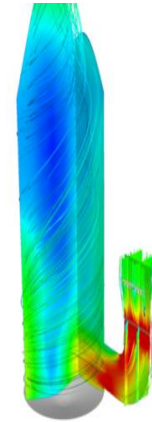
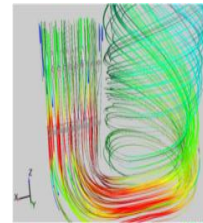
- Dinain.
- Ocean Cleaner.

Civil Sector (Climatization / Fires):

- Acciona Ingeniería.
- Aecom-Inocsa.
- Consorcio de Transportes de Madrid.
- Ferrovial-Agroman.
- TYPASA.
- Unibail Rodamco.

Chemistry:

- Ashland Chemical.
- Basf Propanchem.
- CEPASA Química.
- International Fragrances and Flavours.
- KAO Corp.
- Repsol.
- Repsol Química.
- Solvay.
- UBE Chemical.



ANALISIS-DSC

Velocidad del agua [m/s]

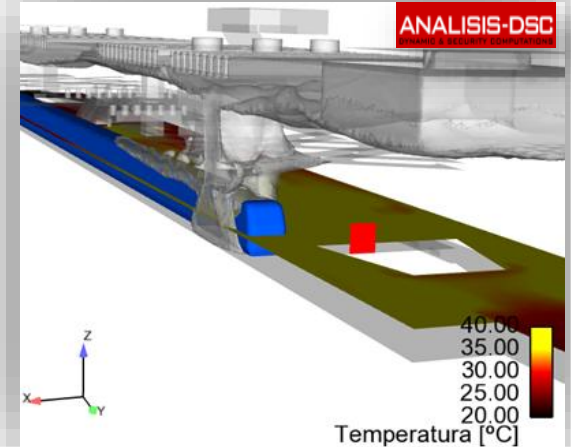
1.00

0.75

0.50

0.25

0.00



ANALISIS-DSC

40.00

35.00

30.00

25.00

20.00

Temperatura [°C]



We are a company with a strong focus on and dedication to R&D&I, enabling us to become your **technology partner**. We participate in both national (CDTI, MINECO, etc.) and European (Horizon Europe, H2020, Eranet, etc.) **R&D projects**. European projects for which we have obtained funding:

PROCESS INTENSIFICATION



NANOTECHNOLOGY



MINING



ENERGY



BIOREFINERY



AGRICULTURE



PRODUCTION



We are members or partners at

We are members or partners of different associations like:



Batteries Europe



BioNanoNet



CEIDEN



CrowdHelix



FOTOPLAT



Red TES
Red española de almacenamiento
de energía térmica

Red TES



**Solar
Concentra**

Solar Concentra



Bioplat



ISMC



PTE-ee

Pilot Farm A - Case Study

- Over 100 Ha. Farm including over 10 Ha. Olive trees, over 30 Ha. Almond trees
- Land available for other crops
- Organic farm
- Located in Granada, in the “Comarca de Guadix y el Marquesado” with great desertification and demographic problems



Images of the Olive and Almond Plantations

Pilot Farm B – Case Study

- About 80 Ha of “Dehesa” type of farm (Grasslands, oak trees and pastures) located in Caceres, (Spain)
- Pastureland used for raising cattle
- Located in Cáceres (Spain)



Fotos de Dehesa

Contact

If your company is interested on additional information about our services, do not hesitate to contact us at:

 www.analisis-dsc.com

 info@ analisis-dsc.com

 **+34 914 614 071**

 **ANALISIS-DSC**

C/Fermín Caballero, 54 S. S. 1.1

E28034 Madrid, Spain

