

Qh.
Studio

K ü b r a H a r p u t l u o ğ l u
A r c h i t e c t u r e P o r t f o l i o



Kübra Harputluoğlu
kubraharputluoglu@qhstudio.nl

Kübra Harputluoglu was born in the Netherlands and obtained her masters degree at Eindhoven University of Technology in Architecture, Building and Planning. During her career she obtained several experiences in Africa, USA and Europe and worked with international companies. Thereafter, she founded Qh Studio in 2022 and has participated into architectural competitions and done freelance projects. Recently, Kübra Harputluoglu is a member of Dutch Business Association in Turkey and taught at Beykent University in '21- '22.

C o n t e n t s

A D A P T I V E R E - U S E I T A L I A N C A S C I N A

01

P O R T U G A L O L I V E G U E S T H O U S E

04

C A S A L I N D A D A

07

B L A C K S C O T T H O U S E

10

P R I M A R Y S C H O O L S E N E G A L

13

T O M B O F W A S T E P A V I L I O N

16



ADAPTIVE REUSE ITALIAN CASCINA

Defining new ways of living in the Italian countryside through the adaptive reuse of an Italian Cascina was the challenge during this project.

The main goal was to transform an historical complex into contemporary homes immersed in rural landscape.



During the design process I tried to re-establish connections between the existing structures with respect to the past. For example, the significance of traditional open space, the Aia, has been emphasized to highlight its role as a core for social interaction and cohesion.

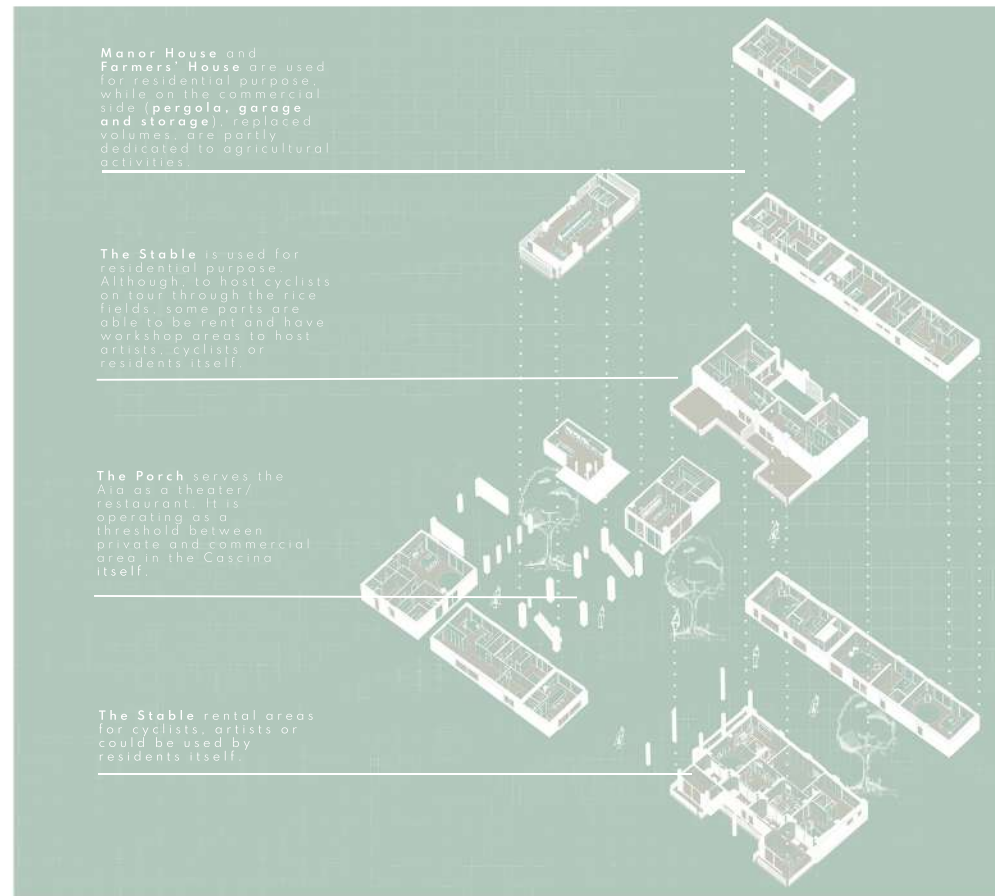
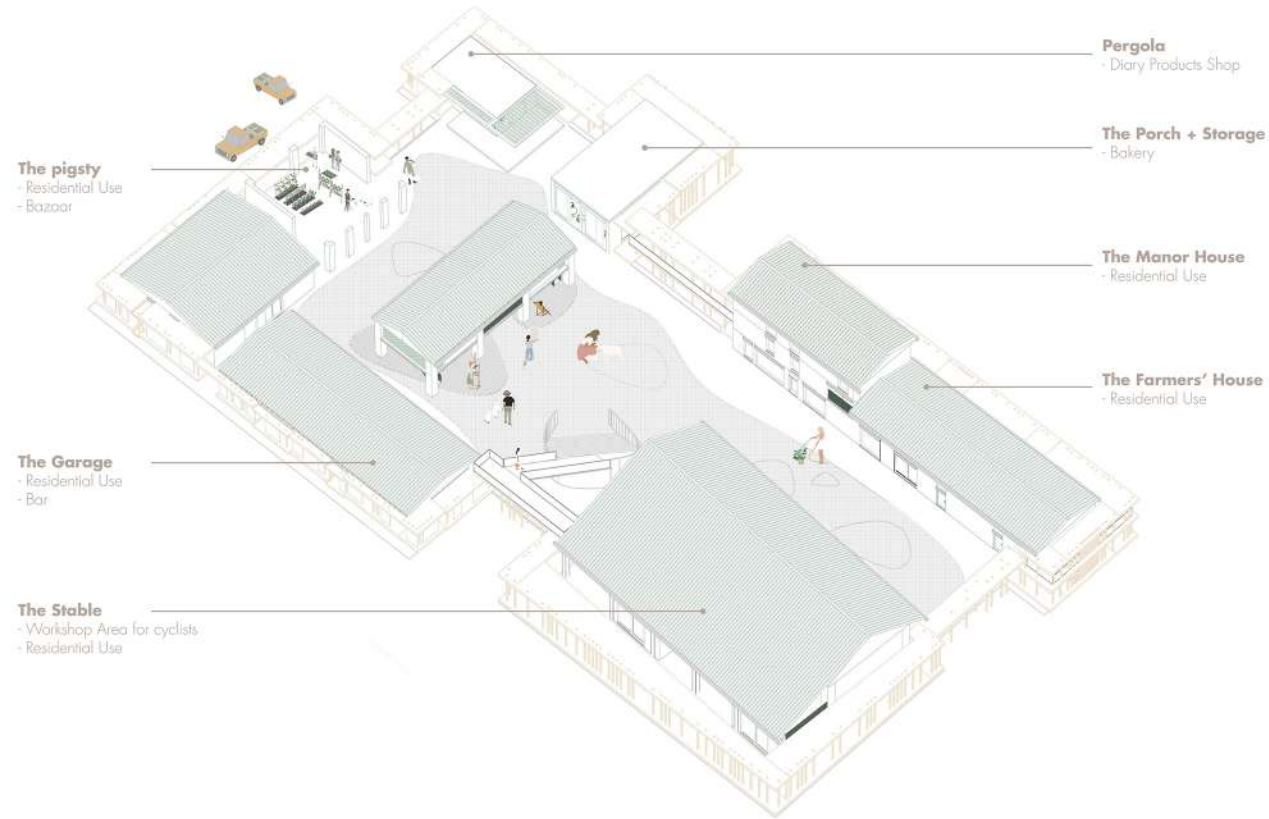
Also, I tried to answer series of questions concerning the location, role of the past, residents, target groups and reaching the place to revive, connect with the city, rediscover rice fields and create vantage points.

Research have shown that rural life and agrarian holdings have abandoned due to urbanization. Now with the growing interest to valorizing those artefacts, recovering initiatives have been launched. Therefore, those historic artefacts are waiting to be bringing back to life.

So the history has been source of inspiration to contemporary.



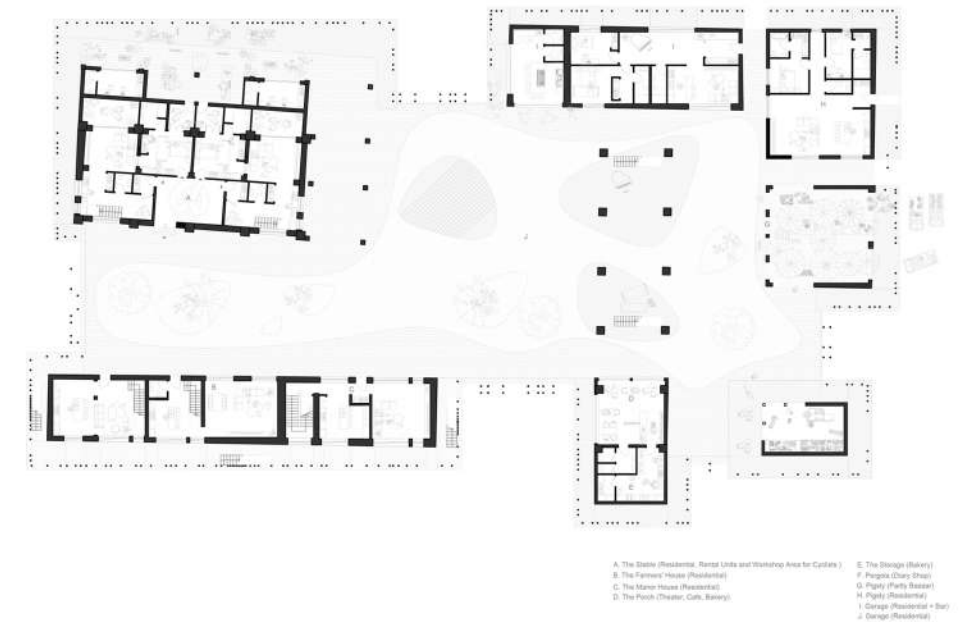
AXONOMETRIC VIEW ARCHITECTURAL ENSEMBLE



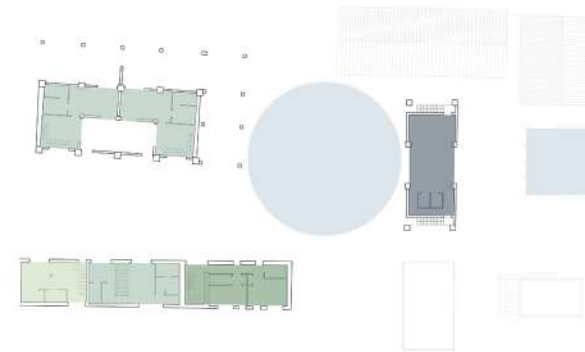
EXPLODED VIEW

One of the key tasks as to program the Porch to serve the local community, to be socially and culturally attractive, open and create the potential for long-term transformation. So, this building has been used as a Theater/ Restaurant that is inspired by the Shakespearean Theater. The two stages could be used for exhibitions, drama, art, workshop by artist (which is also a target group like the cyclists) or residents itself. In this way, all residents are in the middle of / engaging with social and cultural activities.

PLAN

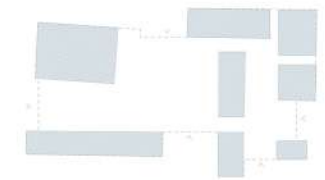


FUNCTIONAL DIAGRAM FIRST FLOOR



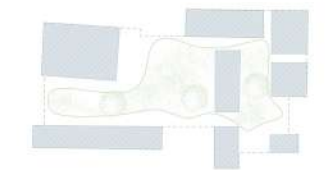
FUNCTIONAL DIAGRAM SECOND FLOOR

Morphological analysis Contour Volumes & Entrances



Investigation have shown that in the past Cascina or large farm, exist of stables, haylofts, silos, granaries, dairies, ovens, stairs, warehouses, mills and farmers houses gathered in a single structure. A complex made up of several volumes, dedicated to agricultural activities, arranged around a central courtyard that is called the Aia.

Contour & Courtyard



Regarding the location, the Cascina's should be more than a place of real experience, rather than a place of passage. It is not directly confronting with the city right now. For example, you reach the place serenely instead of perilous way. To achieve this objective the contours of the buildings have been used to create a second wooden skin along the volumes to offer a transition from public to private and also make the complex operating as a "landmark" in panorama of immense landscape and a connection with the city through the river Po. In this way, it also catches the attention of the cyclist or artist that are on tour through the rice fields. For them, the complex is operating as a transit point.

To revive the productive and communal identity, the Porch, Storage, Pergola, Pigsty and Garage have been replaced by same original volumetric form and dedicated to agricultural activities, like bazaar, bakery and local dairy products. To emphasize replaced and maintained volumes, various materials have been utilized.

Archetype roof with ceramic roof tiles and brickwork have been preserved, while replaced volumes have a smoothly finished contemporary façade. Besides, games shadows on the façade, with use of plaster and polycarbonate panels on wooden structure have been aimed.



P O R T U G A L O L I V E G U E S T H O U S E

The competition was run in partnership with the Verde family, landowners in Portugal that produce homemade olive oil using traditional methods.

The brief tasked participants with presenting designs for a guest house to be realized on the Verde family property.

The guest house is to be centered around a multipurpose space that would mainly function as an olive oil tasting room.

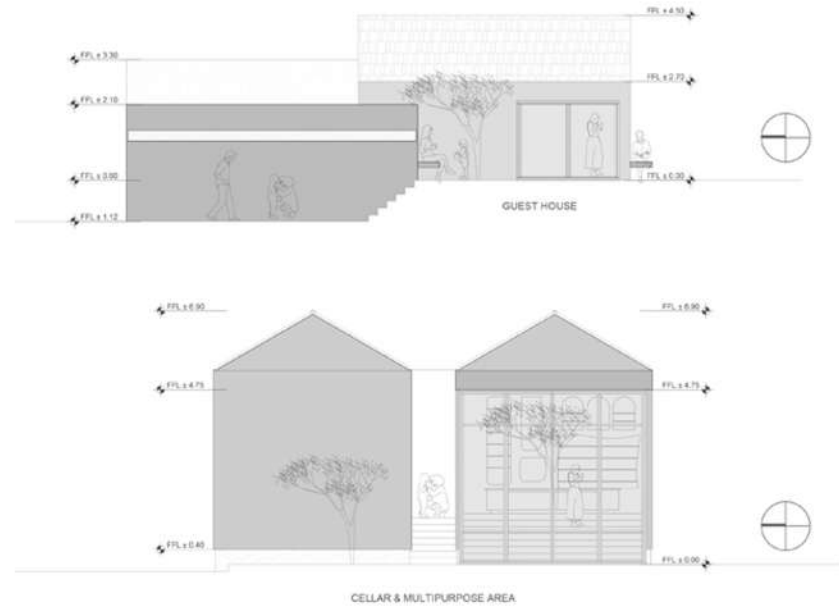


The main concept is to create a unity, through achieving harmony with the context and engaging visitors in the production process of olive oil, its history and tradition.

This has been accomplished through gathering volumes around a courtyard, with the same morphology and roof typologies as surrounding buildings and expressing the production process in the facade of the production area.

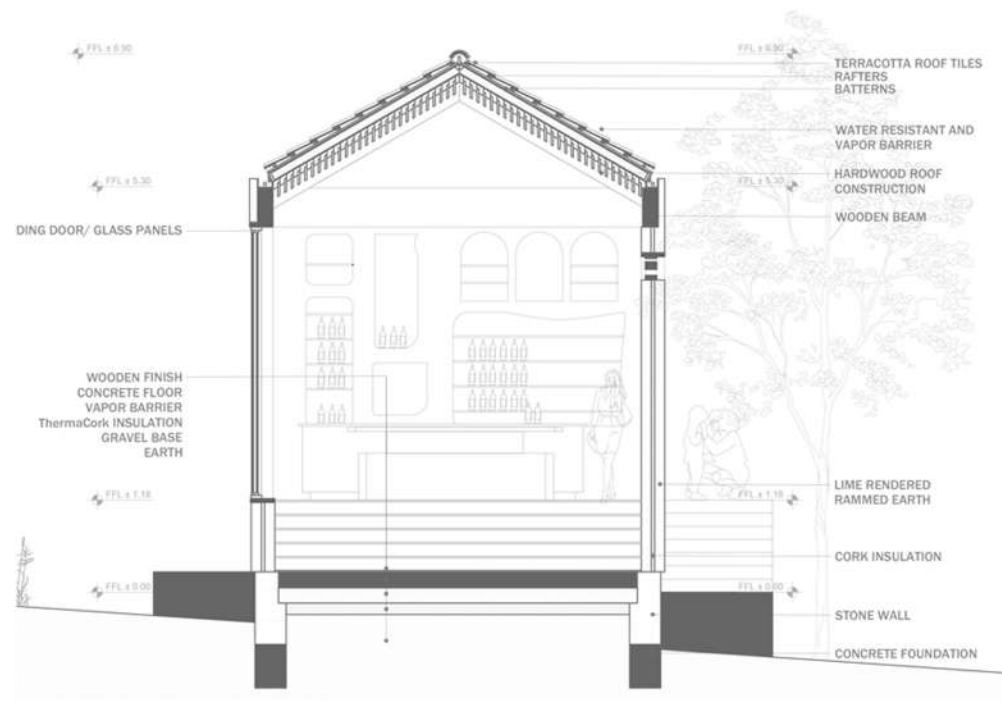
In this way, visitors participating in a workshop, can also engage with the production process.





ELEVATIONS

The entrances to the guest houses are ordered in a way to have access from the courtyard, while the meditation area is more secluded from the courtyard and connected to the semi-private areas, like the terraces of the guest houses.

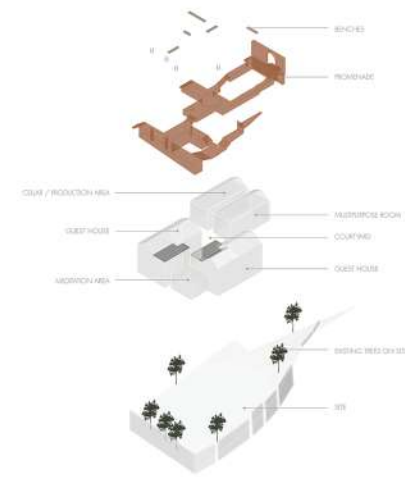


CONSTRUCTION DETAIL

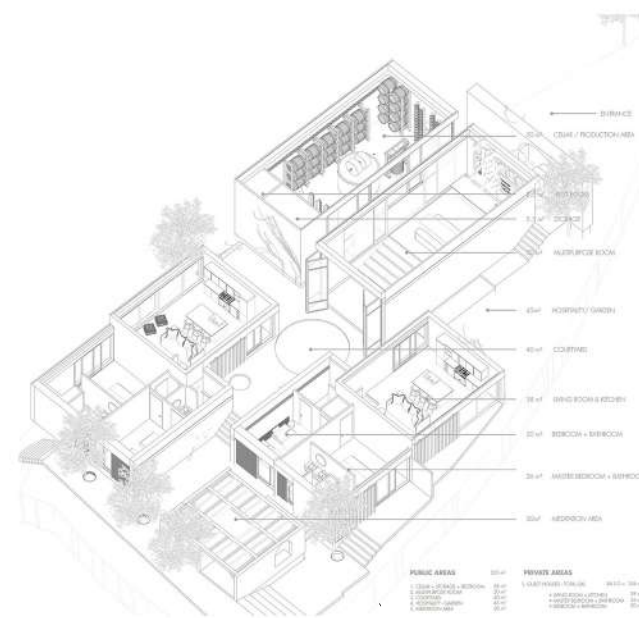
Rammed Earth walls could be created through pouring approx. 15 cm thick loose soil mix in a timber formwork. This layer of moist soil mix will be compressed by using rammed. So the layer become 8-10 cm thick. Thereafter, another layer of loose moist soil mix could be poured in the formwork. After successive layers of moist soil mix have been added and compressed, formwork could be removed and a stable rammed earth wall/ block is the result.



PLAN

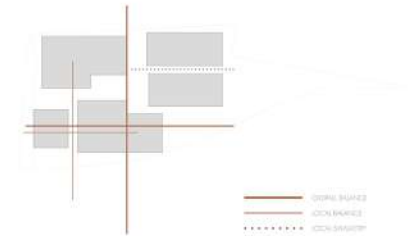


Exploded view



Program Diagram

Symmetry & Balance Diagram



Respecting the topography and the trees on the site have been resulted in a promenade that depicts the circulation and interrelationships of spaces and their hierarchy. Besides, saved trees on site are also cutting direct sunlight. Furthermore, vegetation on the roof of the guest houses provides insulation, reduces stormwater runoff and improve air quality.

Sections



Material Use

- **Lime rendered rammed earth walls.** Lime allows the earthen walls to breathe and is antifungal and antibacterial. Besides, white colour absorbs only 20% of heat.

- **Cork** is used as isolation material for thermal and acoustic comfort. It provides, like rammed earth a cool environment during summer months and it's recyclable. Besides, Portugal is world's largest producer.

- **Oak wood** is used for roof constructions, floors, window frames and veins. Oak columns and beams are repeatable. So features such as modularity, cost-effectiveness, climate comfort and easiness to fix and change, make those materials a perfectly adaptable choice for use.



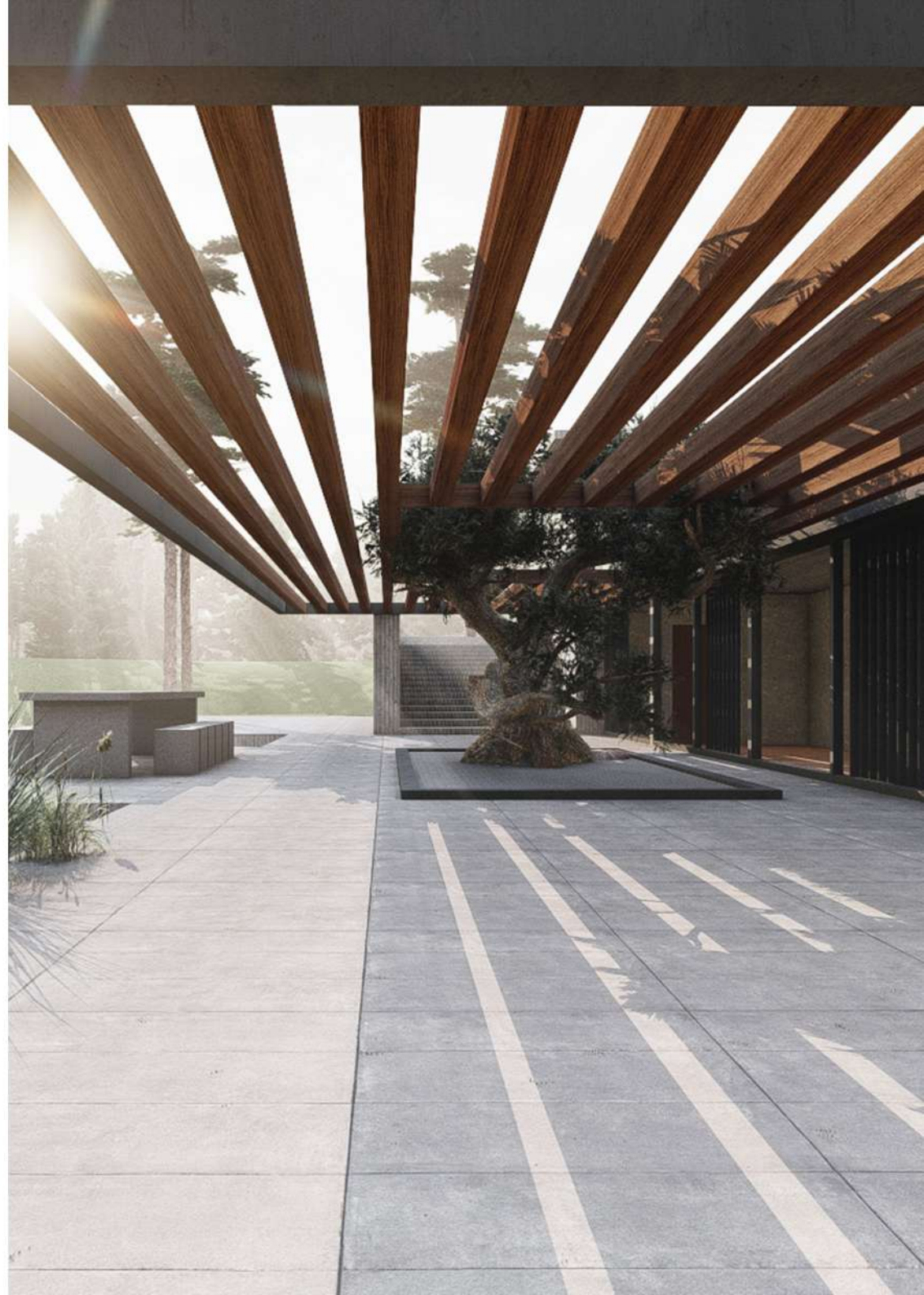
C A S A L I N D A D A

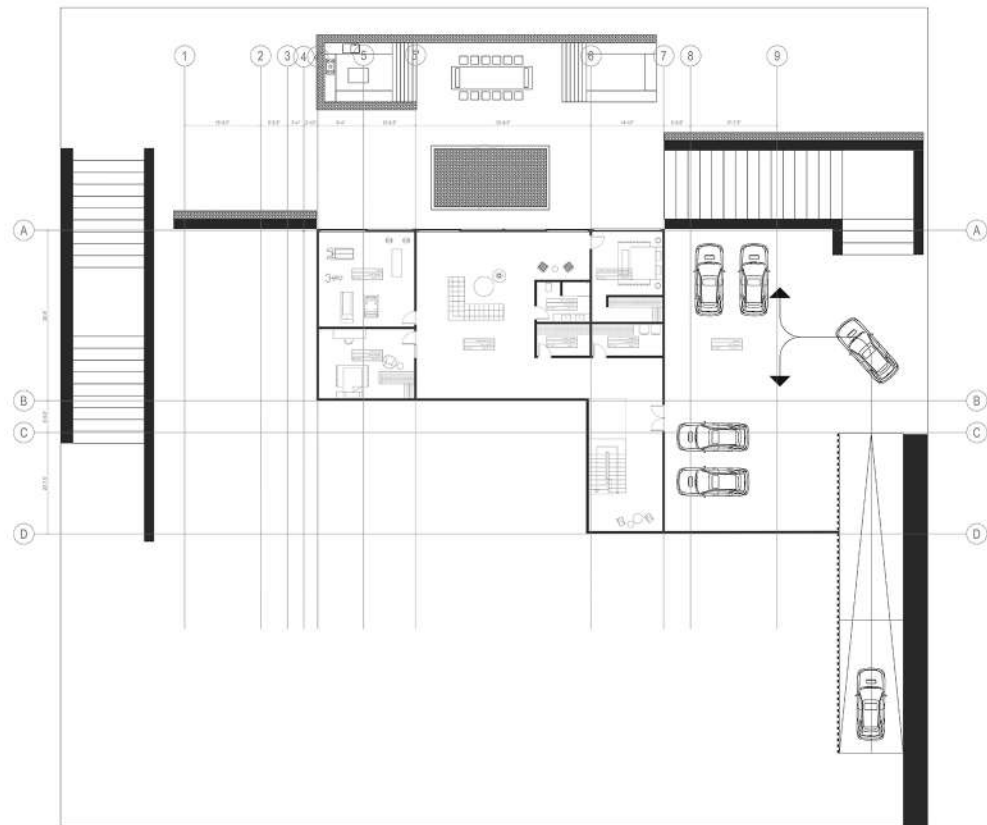
CASA LINDADA is an house for a family of 6 that won the 2nd prize with its design in an international architecture competition. During the design process it was crucial to create a modern concrete home with floor to ceiling windows and an open basement. The entire area of the house is 650 m².



Casa Lindada is a modern house, on a plot in Portugal, that won the 2nd prize with its design in an architectural competition.

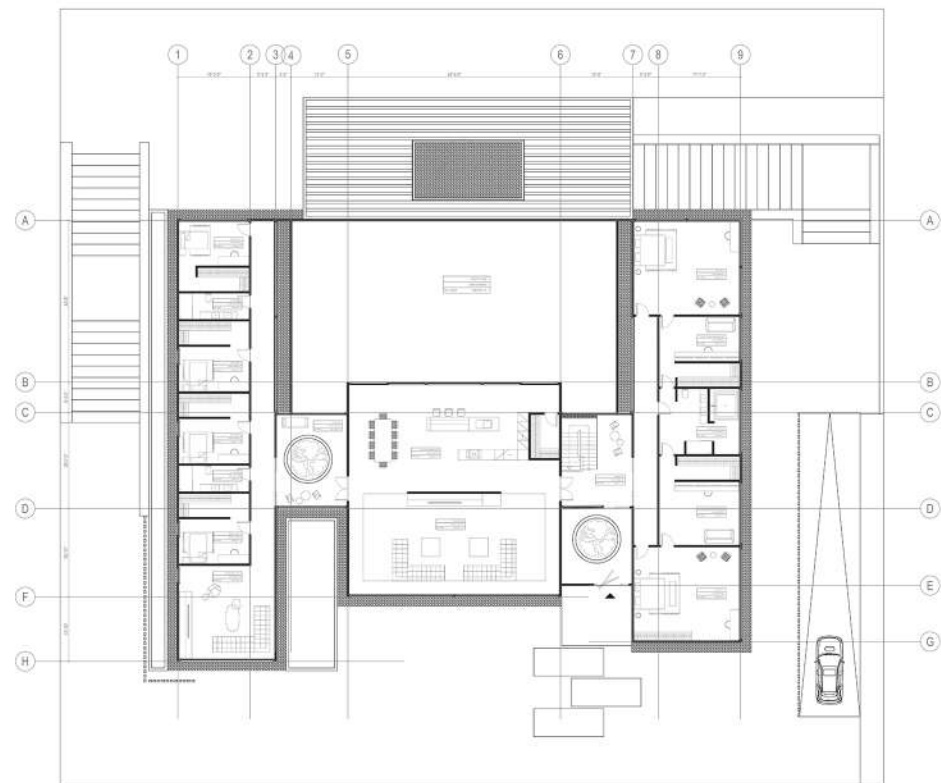
Materials like concrete with fine details and wood has been used in the design. The large windows with thin frames welcoming the green outside. Also interior design consist of green (in sunrooms and attached on some interior walls). In this way the design get embedded and merged with its context.





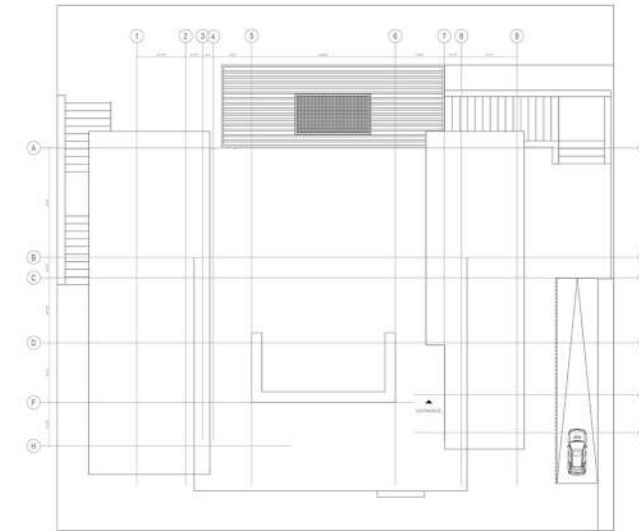
B A S E M E N T

Regarding the basement, it contains of a garage, gym, 2nd living room and two guest rooms with view on the backyard. As mentioned the house is oriented on a sloped landscape and has an open basement with an enormous overhang and tremendous view on the backyard with a huge tree, firepit and open kitchen.



F L O O R P L A N

Regarding the program of this house, it has an symmetric plan that exists of 3 volumes. In the middle you have the main volume that contains the living room, courtyard and open kitchen, while on the left and right side you will find the indoor courtyards (sun rooms), master rooms, bedrooms for children and a play room.



R O O F P L A N



S I D E F A C A D E



B A C K T E R R A C E

I n t e r i o r C o r r i d o r



Every detail mentioned by the client have kept in mind. For example, no entrance from the outside to the rooms of the children due to security reasons, soaking pools in the landscape design and creating an open kitchen with dining area. Also, the roof design exists of a window that catches beautiful sunlight to enlighten the living room while people are sitting on the sofa.

I n t e r i o r - B a t h r o o m D e s i g n



indoor courtyard is welcoming visitors and via a sliding door you come into a sun room that has access to the living room with open kitchen (main volume) and a right wing of master rooms and offices (2nd volume). The playroom and bedrooms for the children are oriented on the left wing of the main volume and have only access via the sun room due to security reasons. Although, the left wing is still catching view and green through wooden columns in the facade and blocking at the same time view and access from the outside as requested by the client.

So a design that reduces the threshold, evokes simplicity and is embedded in its context has been aimed during the design process.



B L A C K S C O T T H O U S E

Black Scott House was a proposal for a family in Scottsdale Arizona. A winter retirement house for 2 people on a lot of 2 acres. This lot is located on an hillside of high dessert area near to Scottsdale Arizona



Rammed earth and dark wood in combination with concrete has been used on the facade as the client requested.

Rammed earth ensures greater thermal and acoustics comfort. So a warm home in the winter and a cool home in the summer was the intention.

Most notably, research have shown that rammed earth structures use local materials, meaning they have low embodied energy and produce little waste.

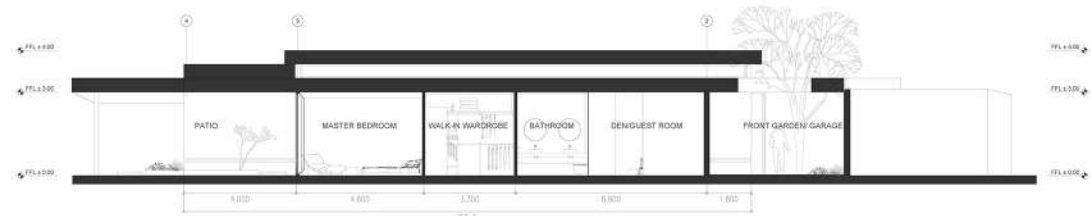
Regarding the expression of these materials, black/grey dark wood has been used, because its boldy minimal presence is consciously conceived to offer a strong contrast to the organic softness of the rock formations, extending far beyond where the eye can see.

The sharp geometric edges stand against nature's backdrop as if to admit the imitation would have done the natural landscape's justice. The house features black walls/ roof and high gloss anthracite steel window frames running through both the exterior and interior, only interrupted by large floor to ceiling window panels, which give recognized attention to the colourful brightness of desert.





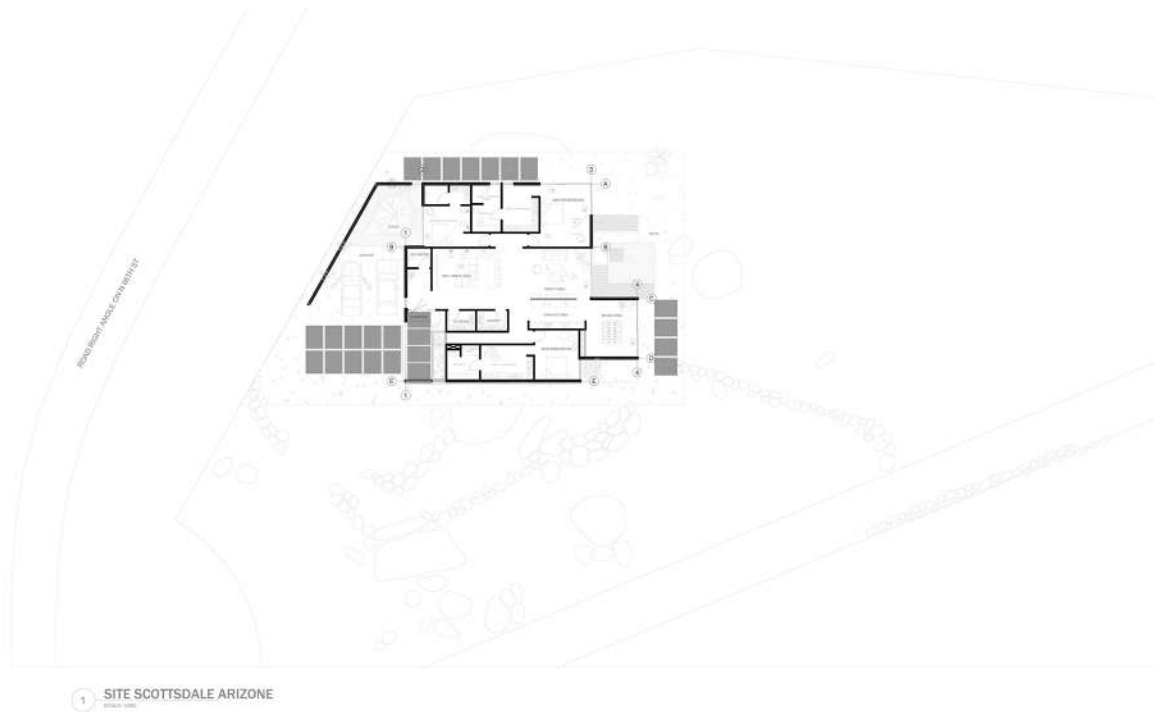
3 SECTION AA
SCALE 1/8"=1'-0"



4 SECTION BB
SCALE 1/8"=1'-0"

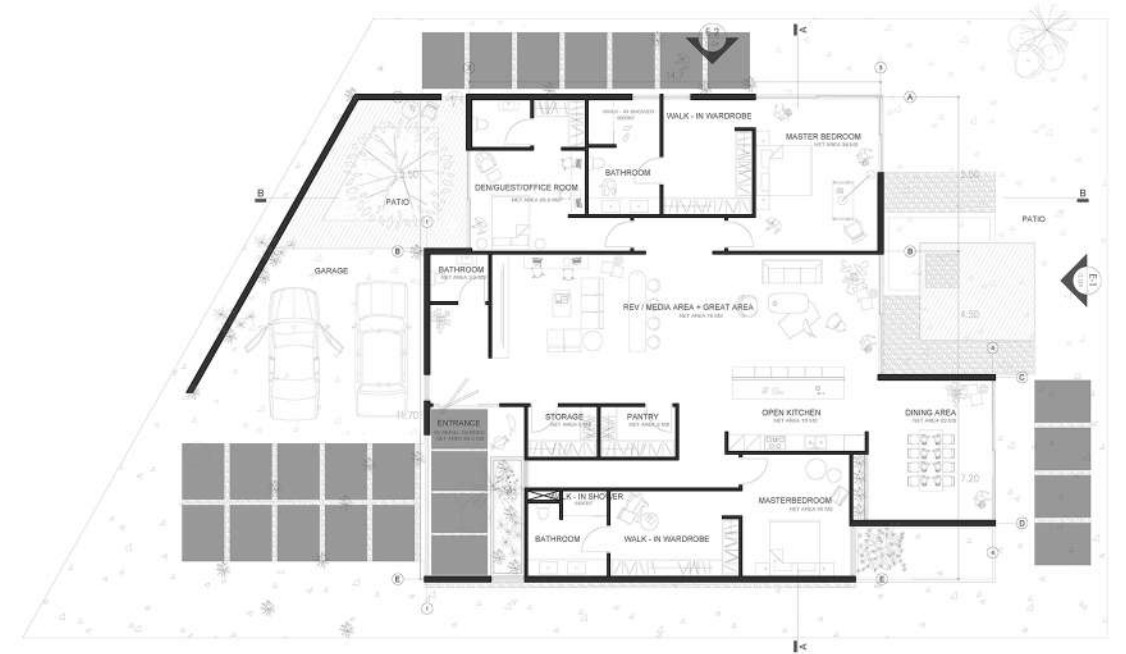
SECTIONS

The house features black walls/ roof and high gloss anthracite steel window frames running through both the exterior and interior, only interrupted by large floor to ceiling window panels, which give recognized attention to the colourful brightness of desert.



SITE PLAN

Lot is 2 acres on a hillside of a high desert area near Scottsdale Arizona, with sunset view to the SW-W-NW, with the home backing to the hillside on the East



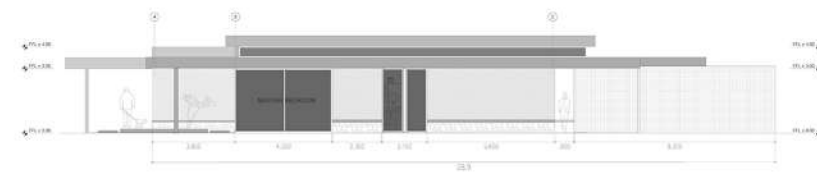
PLAN

Interior Design



Regarding the plan of the house, a small indoor garden is welcoming you before the main entrance (by a pivot door). An area before the real entrance creates security. This area serves also as a mud room. There after a media room and great room with open kitchen is welcoming you. On the left and right side of the great and media room are the master bedrooms and den/rec/office/guest rooms organized.

Elevation E1



Elevation E2

Interior - Dining Room



The West facade (from the entrance right wing) contains a storage, pantry, dining room with view to the Black Mountain and a small hallway to the master bedroom (with again a view to the Black Mountain) with a walk - in wardrobe and bathrooms with only a walk in shower as requested.

On the left wing you have the master bedroom (with view to the Black Mountain) with again walk in wardrobe and bathroom. The rec/office/ den/ guest room has also own bathroom and walk in wardrobe.

So, all rooms are big and have own patio. The guest/ den/ rec room have the front garden. You can reach the garden by the sliding window doors. Also both master bedrooms have their own patios on the South and great view as well.



PRIMARY SCHOOL SENEGAL

"In Sub-Saharan Africa, most schools are not able to offer services that can protect the student, make them feel safe, and foster the development of their potential. Without a quality education, children will not be able to acquire the necessary skills to cope with life's problems and find useful employment to make them independent, and they will not be able to participate in the decisions that affect them, thus putting their future at risk"(Kairaloroo, 2023).

Therefore, the competition aimed to find a new school model that can protect and foster the development of every child's potential

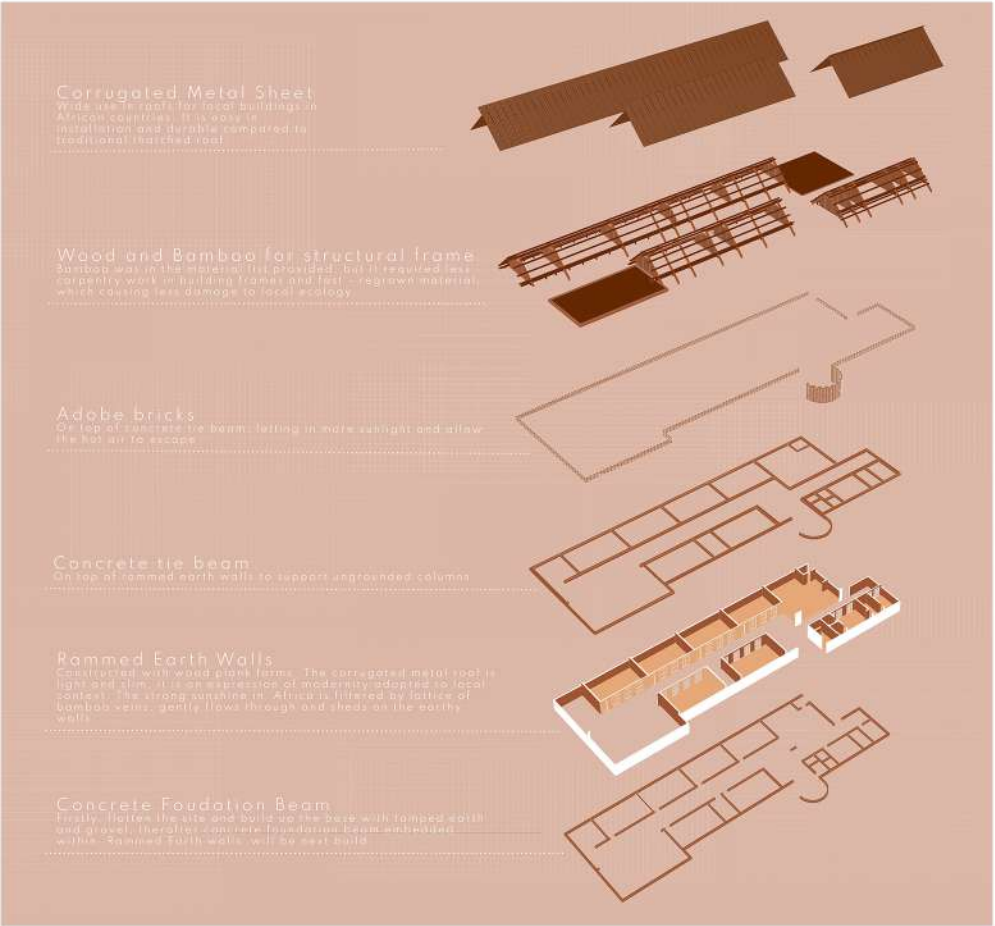


In the heart of Senegal, in Beghere village, a small primary school has embarked on a remarkable design that transubstantiates the lives of scholars and their original communities. This action not only aims to give quality education, but also seeks to foster consistency and understanding among different groups of children.

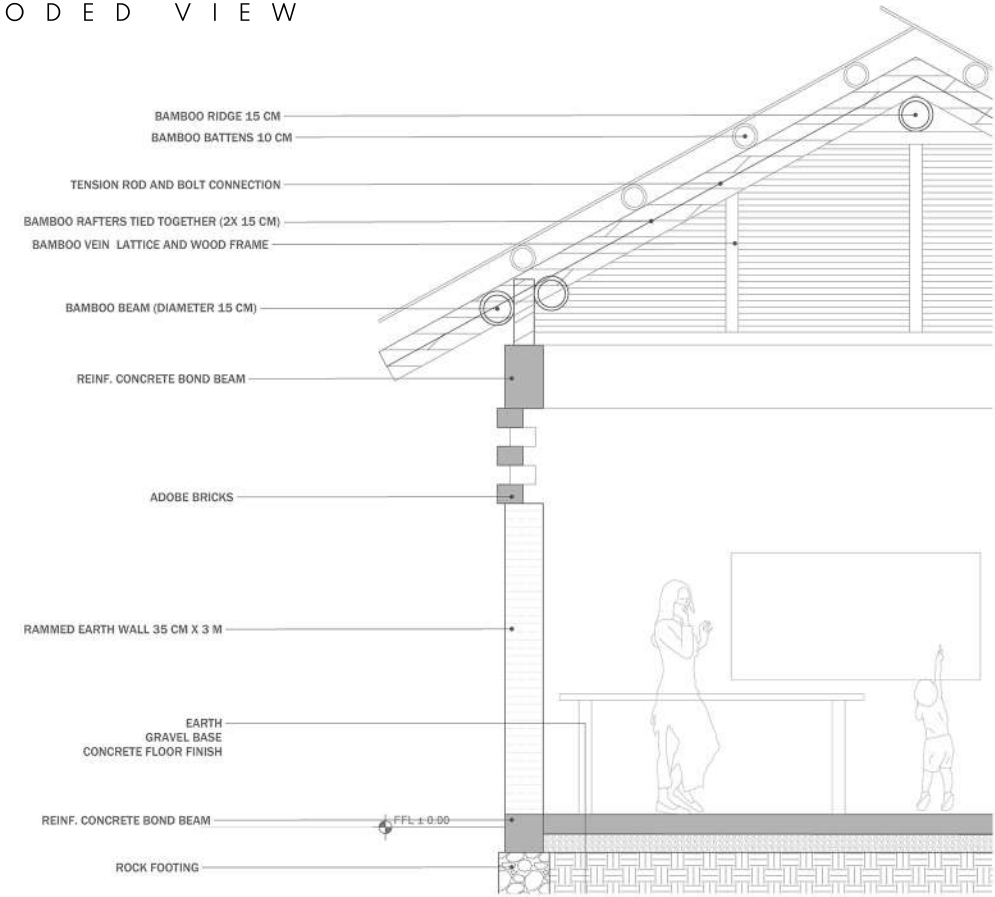
The Primary School express itself as a concise design in a rural setting. In this way, it try to find a balance between open and secluded. Also, it consists of multiple spatial dialogues of public and private areas.

The design has a maximum indoor area of 650 m2, that contains 6 classrooms with an average of 25 students each, offices, laboratory area, sickroom, canteen, storage and toilets.

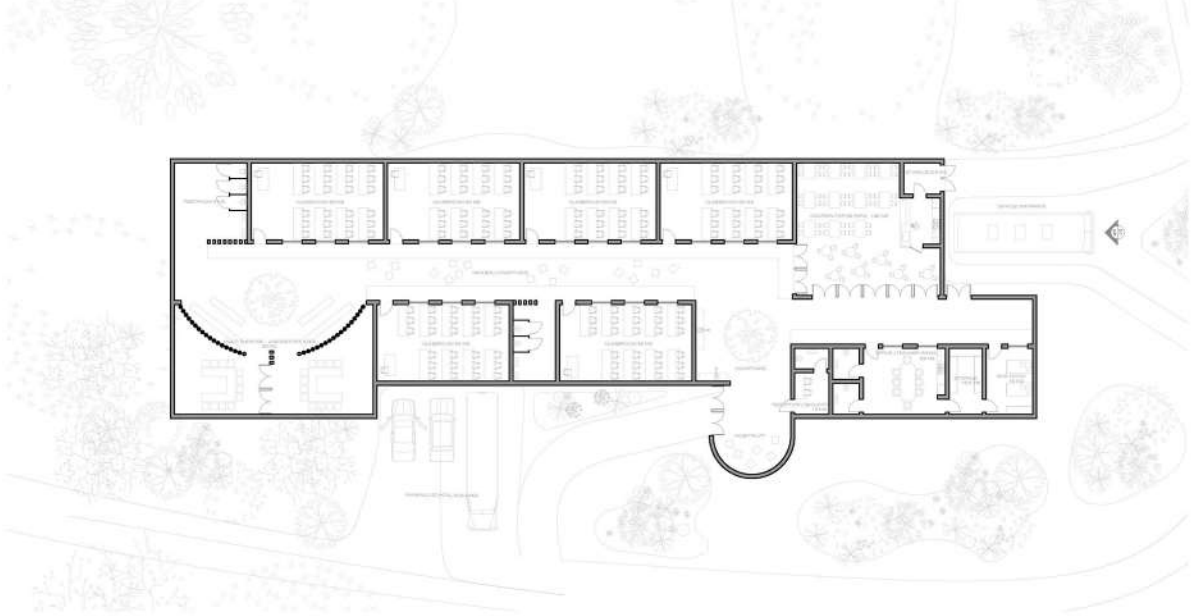




E X P L O D E D V I E W



C O N S T R U C T I O N D E T A I L



P L A N



S i t e P l a n

Additive and Subtractive



Vernacular Senegal traditional architecture has been a source of inspiration during the whole design process. The curved wall, that emphasizes and add a dynamic gesture to the façade has been reinterpreted from traditional architecture of Senegal. Besides, it encloses the courtyard, that operates as a meeting space for children, parents and teachers.

Hierarchy



E l e v a t i o n

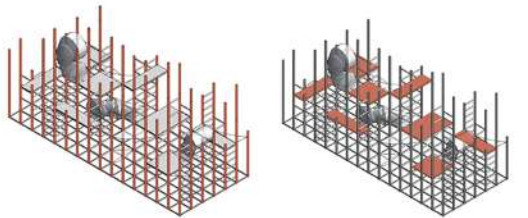
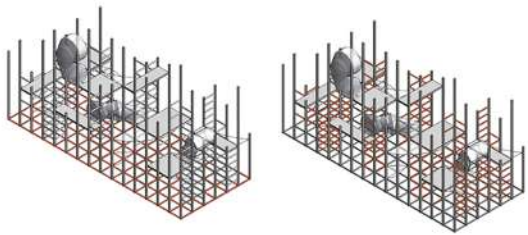
The multiple spaces(classroom, laboratory area, canteen, offices and teachers room) are perpendicular oriented on horizontal axis. At the end of the axis, the laboratory area is situated. The laboratory is sheltered by a green roof.Also, to minimize the threshold between outside and inside and to enlarge the space for recreational activities, bamboo columns have been used. To be easily achievable, a modular design has aimed. The school is composed of repeating elements. Also, recycled and natural material use available in the area limit the economic - environmental impact and generate profitability in the area.



T O M B O F W A S T E

Tomb of waste competition, aimed to create a powerful and a poetic architectural installation that raises awareness about the impact of plastic waste on our planet. It was important to captivate public attention and elevate people's perception by promoting single use plastic as a valuable, versatile and an accessible material that can be used to creatively transform our build environment.

This competition has been finished during the covid pandemic. Seher Ulusoy and Eren Sarac have joined me. First of all thank you for the teamwork. I was responsible for the 3D modeling and the design process. We criticized the whole process as a team and the finishing touches, such as rendering and post production have done in teamwork as well.



The elements of the installation are made out of recycled PVC pipes and joints, which allow easy construction as well as easy transportation. The way assembly varies depending on the contribution of people and other plastic elements. Such as tunnels and hammocks could be added to the grid and column structure. Visitors are also free to involve the design with other plastic objects from home, to point out continuous pollution everywhere people exist. Hence, the visitors could even see the recognizable impact within a short time interval.

Human beings, "the murderers" of this planet are the inhabitants of the planet as well as involved in its pollution. Therefore, a installation that involve visitors has been proposed. At the end of the day, visitors face their souls shucked in the wastes, in the plastic city silhouette. This process elevates the perception towards even a single-use plastic is valuable, versatile, and accessible, on the other hand, a clue to illustrate how the tombs of waste endanger the living planet. The installation could be quickly assembled on iconic spots, we have chosen for famous square such as Placa del Catalunya in Barcelona, Union Square in New York and St. Peter's Square in Vatican City.

