



# AI Geo Navigators

*We Map Data And Business Solutions!*

AI Geo Navigators is redefining how the world is mapped with intelligence, sustainability, and ethical transparency at every step.



# OVERVIEW

AI Geo Navigators is driven by sustainability, Climate resilience, and the pursuit of a greener future. The company leverages geospatial web services and artificial intelligence to deliver next generation solutions for environmental and development challenges. Its focus goes beyond traditional GIS, integrating satellite based monitoring, automated image processing and real time geospatial intelligence platforms that support decision making at scale.

AI Geo Navigators' expertise spans predictive analysis, ESG advisory, cadastral mapping and smart digital twins for land, infrastructure, and resource management. By combining advanced spatial data pipelines, cloud native platforms and interactive models, the company transforms raw data into actionable foresight. Through training, advocacy, and knowledge transfer, AI Geo Navigators empowers organizations and communities to adapt, optimize and accelerate progress toward sustainable development.



## VISION

To be the leading force in geospatial innovation, empowering communities and organizations through intelligent mapping, sustainable data solutions, and digital transformation for a more resilient and informed world.

## CORE VALUES

To be the leading force in geospatial innovation, empowering communities and organizations through intelligent mapping, sustainable data solutions, and digital transformation for a more resilient and informed world.

## MISSION

To deliver cutting edge geospatial and digital solutions that drive data, driven decision, making, enhance climate resilience, and support sustainable development through innovation, collaboration, and capacity building across sectors and communities.

# CEO MESSAGE

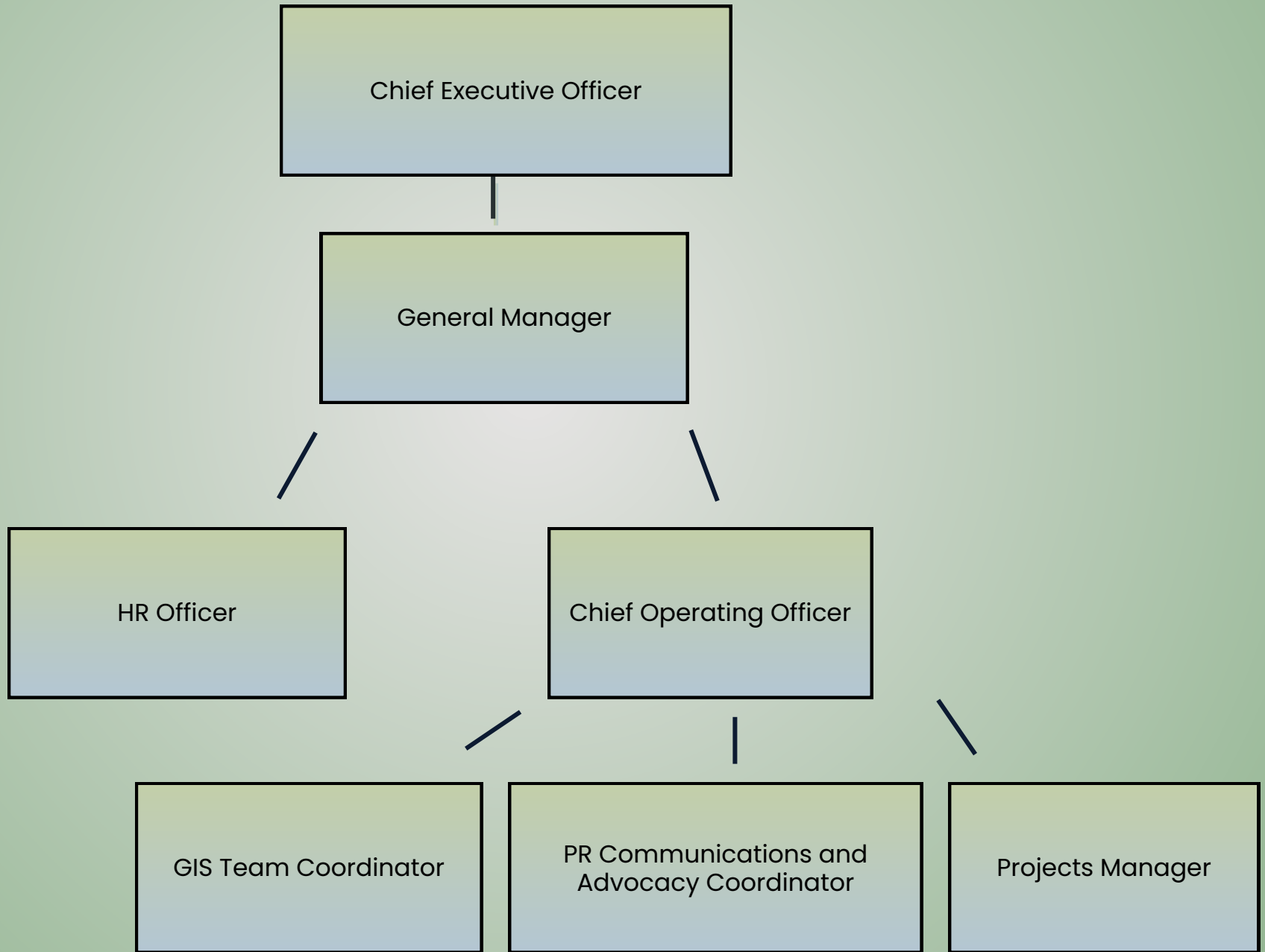


**ASIM JAVID**

At AI Geo Navigators, we believe technology should serve both people and the planet. Every map we create every solution we design is rooted in a vision of sustainability, helping communities adapt to climate change, protecting natural resources and building a safer future.

Our mission is simple: to use geospatial intelligence and AI not just for innovation, but for impact. We want our work to empower decision makers, support communities and leave the environment better than we found it.

# ORGANIZATION STRUCTURE



# OUR SERVICES



## 1. Urban and Rural Planning

- Land Use, Land Cover & Urban Rural Cadastral Mapping
- Pervious and Impervious Classification
- Aerial Mapping for Industries and Agriculture
- Master Plan Preparation

## 2. Climate Change Adaptation Advisory Services

- We are advancing Climate Resilience by finding ways to adapt
- Climate Change Risk and Vulnerability Assessments
- Climate Science, Research and Analysis
- Policy and Planning
- Climate Resilient Infrastructure

## 3. Environmental Management

- Strategic Environmental Impact Assessments
- Environmental Management Plans
- ESG Data Mapping, Analytics & Reporting Dashboards
- Waste & Circular Economy Consulting
- Water Risk & Management Solutions
- Sustainable Land Use & Biodiversity Monitoring
- Climate Risk & Resilience Assessments
- Carbon Footprint & Net-Zero Roadmaps
- Sustainability Reporting (GRI, ISSB, CSRD)
- CBAM Reporting (EU Carbon Border Adjustment Mechanism)

#### **4. Geographical Information System (GIS) and Remote Sensing**

- Spatial Database Development
- Web GIS
- Geological and Mining survey
- Cartography and Map Production
- Geodata Production and Editing
- ArcHydro, GIS for Water Resources
- Topography Survey
- Decision Support System
- Land Digitization and Georeferencing
- Time Series & Change Detection Analysis
- Feature Extraction & Mapping Outputs
- Pre & Post Processing of Imagery

#### **5. AI and machine learning services**

- AI ChatBots
- Large Language Models (LLMs) Development & Integration
- Small Language Models (SLMs) for Domain-Specific Applications
- Server Based Machine Learning Solution
- Locally Deployed (On-Premise) ML Models
- Data Engineering & Pipeline Development
- Data Science & Predictive Modeling
- Advanced Data Analysis & Visualization
- Microsoft Azure AI & Cloud Services

#### **6. PR, Communications and Advocacy Services**

- Strategic Communication Planning
- Weather, Disaster & Early Warning Communication
- Media Engagement & Sensitization
- Content Development & Visualization
- Digital & Social Media Campaigns
- Youth & School Based Climate Advocacy
- Community Based Communication
- Policy Advocacy & Stakeholder Engagement
- Capacity Building & Workshops
- Behavior Change & Risk Communication

# Our Projects



**Environment Management Plan-MASTER GAS SYSTEM EXPANSION PHASE-III PKG1- Upgrade Existing BGCS1,3 & 5 (on-going)**



MASTER GAS SYSTEM EXPANSION PHASE-III PKG1- Upgrade Existing BGCS1,3 & 5  
Client: Petroleum Engineering & Construction Corporation

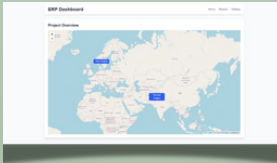
Environment Management Plan

S. No.	Activity	Location	Start Date	End Date	Duration	Impact	Control Measures	Responsible Party	Frequency
1	Construction	Phase III Clusters	2023-01-01	2023-12-31	12 Months	Soil erosion, dust, noise, vibration, traffic, etc.	Soil conservation, dust suppression, noise barriers, etc.	Client/Contractor	Monthly
2	Operation	Phase III Clusters	2024-01-01	2024-12-31	12 Months	Gas leaks, noise, vibration, etc.	Leak detection, noise monitoring, etc.	Client/Contractor	Monthly
3	Maintenance	Phase III Clusters	2024-01-01	2024-12-31	12 Months	Gas leaks, noise, vibration, etc.	Leak detection, noise monitoring, etc.	Client/Contractor	Monthly

**Cadastral Mapping of Tehsil Daska, District Gujranwala**



**THINKTANK GROUP Services - ERP Solution**



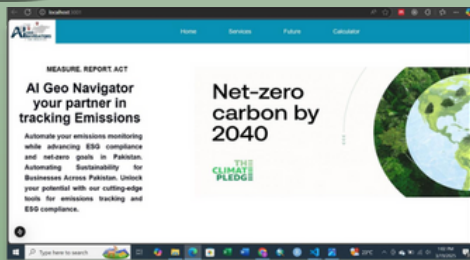
Asset Management System

Asset ID	Asset Name	Location	Status	Category
AS001	Asset 1	Location 1	Active	Category 1
AS002	Asset 2	Location 2	Inactive	Category 2
AS003	Asset 3	Location 3	Active	Category 3

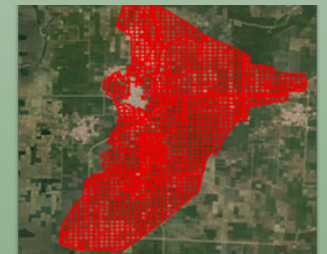
**Real Time Property Visualization For Mumtaz City**



**Carbon Credits: A Market-Based Approach to Reducing Emissions**



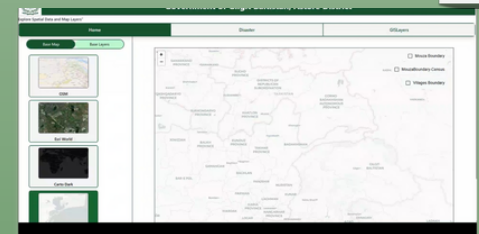
**Cadastral Mapping of Yazman Tehsil, District Bahawalpur**



**MHVRA-Muzaffarabad. Pakistan Hazard Portal**

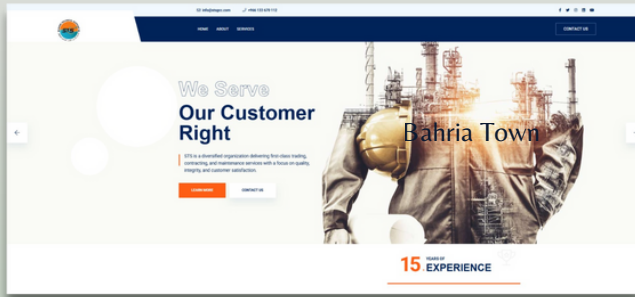


**MHVRA Web Portal for District Administration Astore**

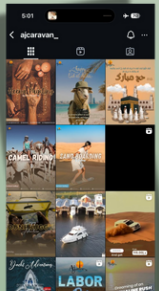




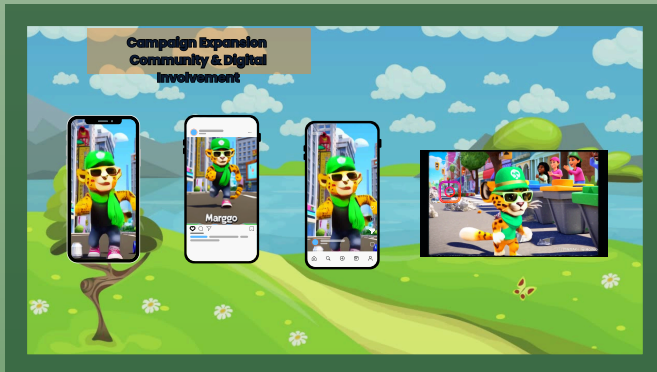
## SHINE TECHNICAL SUPPORT



## AJ CARVAN



## CDA SOCIAL MEDIA CAMPAIGN



## AJ PROPERTIES



## CDA PLANTATION DRIVE



# OUR VALUED CLIENTS



# OUR PARTNERS

Our parents are the foundation of our growth, teaching us values of resilience, responsibility, and foresight. Like sustainable practices, their guidance inspires long-term thinking, ethical choices, and meaningful impact in both personal and professional life.

WE SUPPORT



COALITION FOR SUSTAINABLE AI



# GLOBAL RECOGNITIONS



# GET IN TOUCH

## ISLAMABAD OFFICE:

- 📍 Street 92, Building No. 63 Service Road I-8/4 Near Dar-e-Arqam School
- ☎️ +92 334 6555577
- ✉️ info@aigeo360.com
- 🌐 www.aigeo360.com

## REGIONAL OFFICE GILGIT-BALTISTAN:

- 📍 Address FC Colony street number 7 Jutial Gilgit
- ☎️ +92 355 5516461
- ✉️ admin.gilgit@aigeo360.com

## GLOBAL OFFICE

- 📍 16192 Coastal Highway, Lewes, Delaware 19958, County of Sussex, USA
- ☎️ +1302-406-6265