

World leaders in advanced polymer technology

ENECON



REPAIR - DON'T REPLACE®

Solutions for Erosion, Corrosion, Cavitation, Wear and Chemical Attack Problems on:

pipes • pumps • impellers • valves • tanks • condensers • heat exchangers • tube sheets • water boxes • chillers • absorbers • shafts • hydraulic rams • FGD systems • scrubbers • centrifuges • cooling towers • containment dikes • troughs • spillways • propellers • kort nozzles • bow thrusters • rudders • struts • hull fairing

A recognized world leader in developing advanced polymer technologies, **ENECON[®] Corporation** has pioneered unique coating systems for industries including: the U.S. Navy, the petrochemical industry and electrical utilities. These extraordinary polymer systems are the result of years of research and development work that began with the first epoxy slip-resistant deck coatings approved by the U.S. Navy and the first products approved to the Department of Defense Specification C-24176 for hull fairing / smoothing.

The senior management of **ENECON[®] Corporation** have many years of combined practical

experience in troubleshooting industrial fluid flow problems. They have worked closely in the past with such diverse and prestigious organizations as the Panama Canal, Army Corps of Engineers, United States Navy, nuclear and fossil fuel power stations, pulp and paper mills, petrochemical plants, mining and quarrying operations, food processing facilities, pharmaceutical companies, etc.

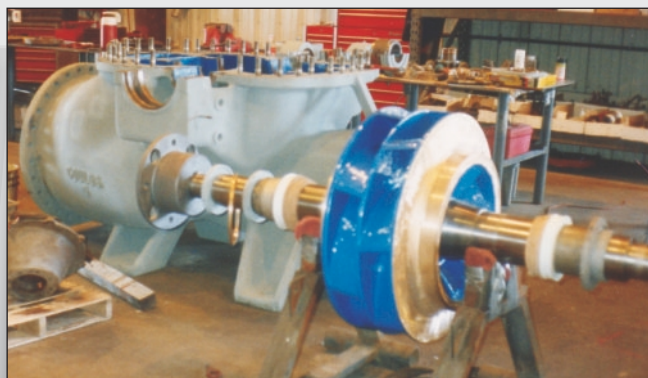
ENECON[®] is strategically positioned to provide industry, utilities and institutions with the finest repair and protection products and services available. **ENECON[®]**, therefore, is the name to call when fluid flow problems are costing you time, money and aggravation.



International Testing & Approvals

- U.S. Military Specification DOD-C-24176 / QPL-24176
- Nuclear Irradiation, Decontamination & DBA Testing
- Other Tests / Approvals / Commendations:
U.S. Army, U.S. Navy, ABS, NSF, Korean Register

Specific details / product information available upon request.



METALCLAD®...

The most advanced metal repair & protection systems available

Wherever erosion, corrosion, wear or chemical attack create problems in fluid flow systems, **METALCLAD®** polymer composites provide the ultimate solution.

ENECON® researchers have combined the latest and safest polymer technology with unrivaled fluid flow systems engineering know-how to produce the most advanced polymer systems available for rebuilding, resurfacing and protecting virtually all fluid flow components as well as plant structures.

METALCLAD® systems exhibit outstanding compressive and flexural strengths as well as phenomenal adhesion. Their ability to cure at low temperatures, provide superb chemical resistance and non-shrink properties make **METALCLAD®** the obvious choice for the maintenance engineering professional.

METALCLAD® repair and protection systems offer incredible savings over conventional repair or replacement procedures.

SpeedAlloy® & SpeedAlloy® QS

Leak Repair Polymer Composites

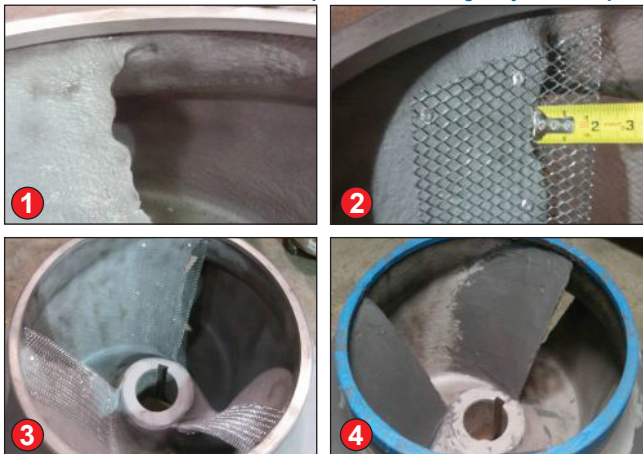


The "leak stopper!"

Fast, easy, non-slump; can be used to repair just about any leak in minutes. Ideal for pipes, tanks, sumps, casings, radiators, fuel tanks, etc. Bonds to virtually any rigid surface!

CeramAlloy® CP+AC

Erosion / Corrosion Resistant Repair & Rebuilding Polymer Composite



Outstanding erosion resistance. Trowelable system for repairing and rebuilding metal damaged by erosion and corrosion: on pumps, valves, heat exchangers, tube sheets, water boxes, etc.

CeramAlloy® CBX & EBX

Abrasion Resistant Polymer Composites



Repair & protect all types of equipment subject to very aggressive abrasion. Engineered to repair deeply damaged components.

DurAlloy®

Repair & Rebuilding Polymer Composite / Fully Machinable



Multi-purpose; can be drilled, tapped, turned on a lathe, sanded and polished. Can be used to repair worn shafts, cracked casings and engine blocks, stripped threads, sloppy keyways, scored hydraulic rams, oversize bearing / bush housings, etc.

CeramAlloy® CL+AC

Erosion / Corrosion Resistant Resurfacing Polymer Composite



The ultimate resurfacing system for protecting fluid flow equipment. Brushable, self-leveling, castable: for pumps, valves, water boxes, tube sheets, tanks, propellers, kort nozzles, bow thrusters, rudders, struts, etc.

METALCLAD®...

The most advanced metal repair & protection systems available

CeramAlloy® HTP & HTL

High Temperature Resistant Repair, Rebuilding and Resurfacing Polymer Composites

To combat the problems caused by corrosive environments on equipment accelerated by elevated operating temperatures, ENECON® has developed specialized versions of its CeramAlloy that can withstand elevated temperatures in immersed service and under dry conditions.

These materials, **CeramAlloy® HTP** and **CeramAlloy® HTL** can be used to repair and rebuild localized damage as well as coat and protect entire components from future damage.

CeramAlloy® HTP is a two component, 100% solids polymer composite specifically formulated to rebuild and repair all types of fluid flow equipment that may be subject to elevated temperatures.

CeramAlloy® HTL is a two component, 100% solids, liquid polymer composite used for repairing, resurfacing and coating both damaged and new components to provide outstanding erosion and corrosion resistance at elevated temperatures.

Repair & rebuild all types of equipment, outstanding erosion/corrosion resistance - even at elevated temperatures!



DuraWrap®

Carbon Fiber, Polymer Composite Pipe Wrap System

METALCLAD® DuraWrap® polymer / carbon fiber reinforced composite makes repairing and rebuilding aging, often severely deteriorated piping, tanks and other fluid flow equipment possible.

The ENECON® DuraWrap® composite, a unique marriage of ENECON®'s high performance polymers and cutting-edge carbon fiber technology, was specifically created to repair, rebuild, reinforce and even restore the integrity of such fluid flow systems - thereby greatly extending service life and eliminating the need for expensive replacement.

DuraWrap® can be applied to the interior and / or exterior of piping and equipment to both seal and strengthen these components. When applied to the interior walls of underground or otherwise inaccessible piping, DuraWrap® can effectively repair and restore pipe integrity without expensive excavation and replacement.

The outstanding performance of the ENECON® METALCLAD® DuraWrap® system allows today's maintenance professional to extend the service life of yesterday's equipment and structures.

Repair, reclaim, reinforce & extend the life of all types of metal & concrete pipes & tanks.



FLEXICLAD[®]...

Extraordinary, super resilient polymer systems specifically developed for cavitation problems

DuraTough[™] DP & DL

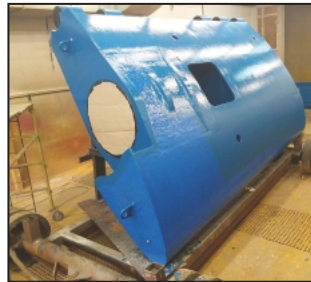
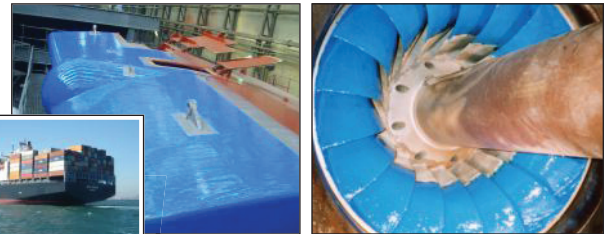
Cavitation Resistant Repair, Rebuilding & Resurfacing Elastomeric Polymer Composites

Whether it's pump impellers or ship propellers, cavitation damage to metal is a never ending problem — and one that presented very few repair options to the maintenance engineer in the past. But now, **FLEXICLAD[®] DuraTough[™]** systems provide exceptional protection to equipment prone to cavitation attack and subsequent damage. Super tough, super resilient and cost effective.

FLEXICLAD[®] DuraTough[™] DP is a two component, 100% solids elasto-ceramic polymer composite specifically formulated to rebuild equipment prone to cavitation attack and subsequent damage.

FLEXICLAD[®] DuraTough[™] DL is a two component, 100% solids, fluid consistency elasto-ceramic polymer composite specifically formulated to resurface and protect equipment subject to cavitation and accelerated erosion / corrosion.

Superior strength, durability and adhesion with flexibility, abrasion resistance and elongation.



CHEMCLAD®

The ultimate in chemical protection systems

Approved
For Potable
Water!



Certified to
NSF/ANSI 61

ENECON®'s **CHEMCLAD®** systems are the finest chemical resistant claddings available resistant to a wide variety of organic and inorganic acids, alcohols, alkalis, esters, ethers, hydrocarbons, halogenated hydrocarbons, ketones, oils, salts, etc.,

They are revolutionary polymer composites that can be easily and safely applied by brush, roller, squeegee or airless spray - even in confined spaces.

For Metal...
pipes, tanks, pumps, valves, fume hoods,
drains, heat exchangers, etc.

For Concrete...
containment dikes, troughs, spillways,
process areas, etc.

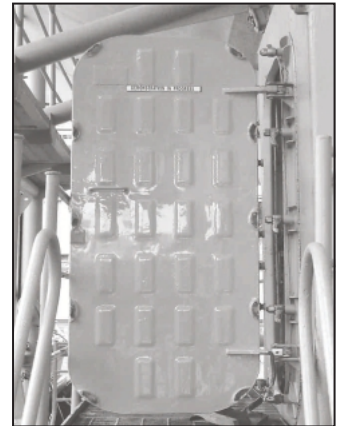


CHEMCLAD® SC NSF

Polymer Composite Coating System For Standard Chemical Environments



CHEMCLAD® SC - a two component, 100% solids, polymer system that creates an outstanding corrosion and chemical resistant protective coating on all types of equipment and structures.



CHEMCLAD® SC is simple to use. It mixes easily and can be applied by brush, roller or airless spray. It is available in different colors to simplify overcoating. This self-leveling, high gloss coating yields a surface that's not only functional, but also aesthetically pleasing.

CHEMCLAD® XC

Outstanding Polymer Composite Coating System For
Extraordinary Chemical Environments



ENECON

repairs@eneconhellas.com | repairs@enecon.com.sg

Muff Coupling



Tail Shaft Coating



Worn Shaft Repair

ENECON DurAlloy Applied and Machined In Place



Titan Dry Dock Ballast System



Three Coat CeramAlloy System to provide 30+ years protection



**Unrivalled Solutions
to the Toughest:**

CORROSION

CAVITATION

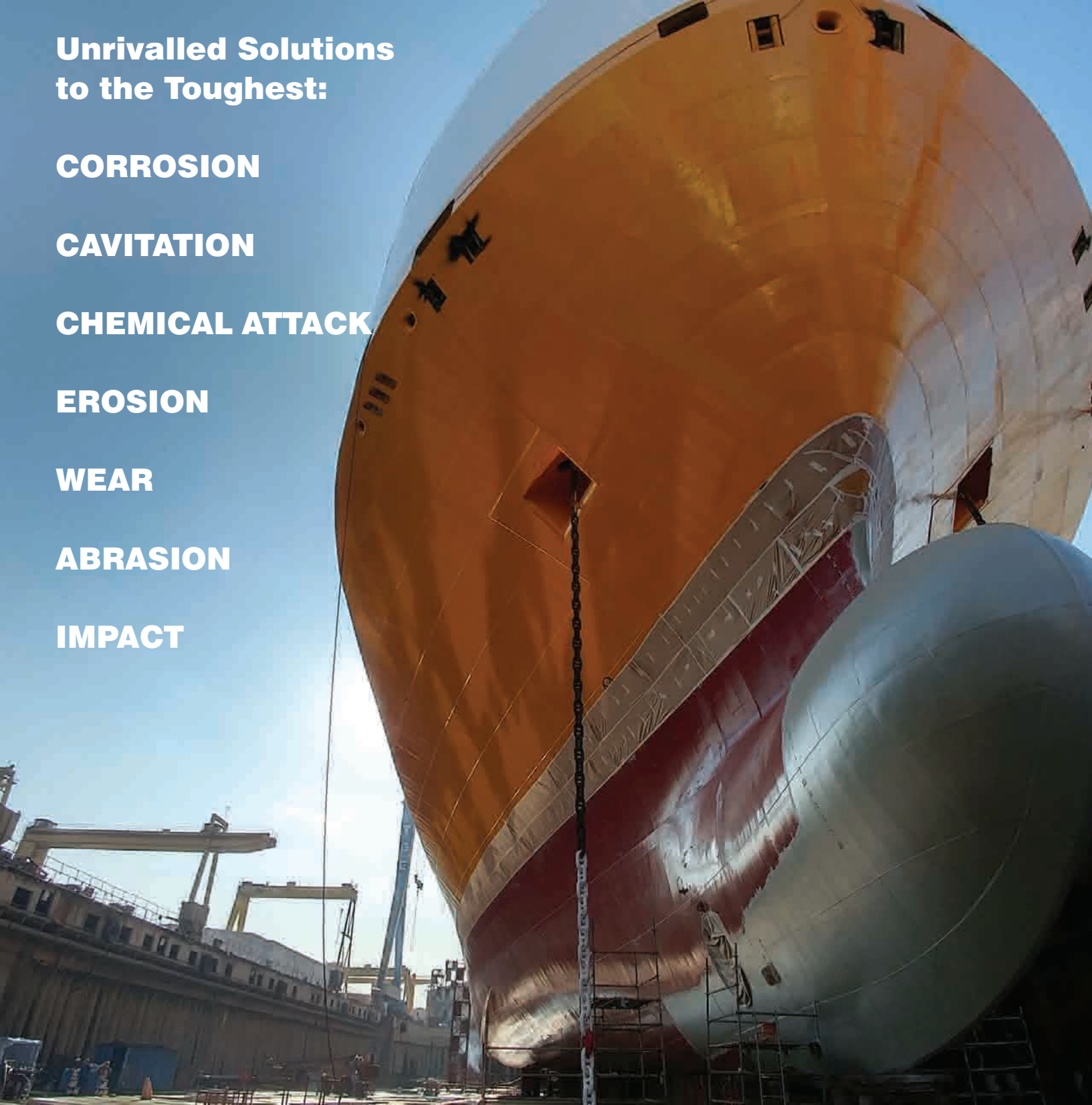
CHEMICAL ATTACK

EROSION

WEAR

ABRASION

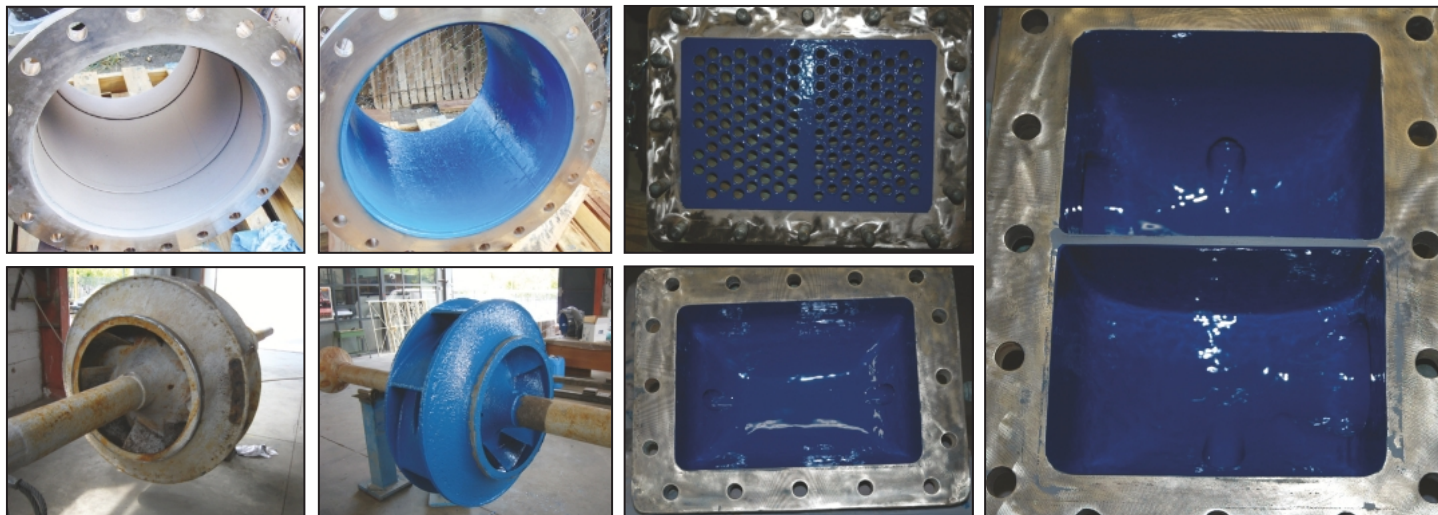
IMPACT



ENECON systems are engineered to repair, rebuild, resurface and protect fluid flow machinery, equipment and surfaces, to address severe corrosion, erosion, cavitation, wear, abrasion, impact, and chemical attack problems on vessels of all types, for emergency or dry dock repairs.

REPAIR - DON'T REPLACE[®] 

MACHINERY & EQUIPMENT...



Extreme corrosion protection by ENECON'S CeramAlloy.



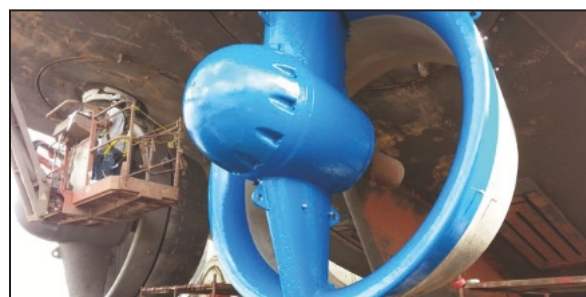
Repair Don't Replace for biological plant in Cyprus.



Protection from cavitation project.



Pasta factory in Cyprus (Rebuild-Coat-Protect).



Unrivalled protection by CeramAlloy CL + AC.



Before & After with CeramAlloy.

Unrivalled Solutions
to the Toughest:

CORROSION

CAVITATION

CHEMICAL ATTACK

EROSION

WEAR

ABRASION

IMPACT



- Steam lines
- Tanks
- Tank tops
- Tube sheets
- Valves
- Propellers

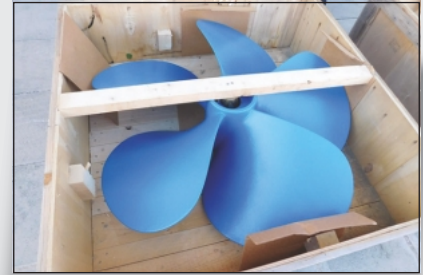
- Cargo holds
- Chillers
- Condensers
- Decks
- Engine blocks

- Pumps
- Rubber parts
- Rudders
- Scrubbers
- Shafts

- Fuel tanks
- Hatch covers
- HFO savings
- Impellers
- Pipes
- etc

REPAIR - DON'T REPLACE[®]





Advanced Polymer Solutions for your Repair and Maintenance needs

Erosion, Corrosion, Cavitation, Wear and Chemical Attack Problems on:

- | | | |
|-------------------|---------------------|-----------------|
| • Pipes | • Absorbers | • Troughs |
| • Pumps | • Shafts | • Spillways |
| • Impellers | • Hydraulic Rams | • Propellers |
| • Valves | • FGD Systems | • Kort Nozzles |
| • Condensers | • Scrubbers | • Bow Thrusters |
| • Heat Exchangers | • Centrifuges | • Rudders |
| • Tube Sheets | • Cooling Towers | • Struts |
| • Water Boxes | • Containment Dikes | • Hull Fairing |
| • Chillers | | |



ENECON®

REPAIR - DON'T REPLACE®

WhatsApp: +30 694 665 8998

WhatsApp: +65 825 989 46

WhatsApp: +35 797 900 449

repairs@enecon.com.sg

repairs@eneconhellas.com

Copyright © 2017 by ENECON® Corporation. All rights reserved. No part of this work may be reproduced or used in any form or by any means - graphic, electronic or mechanical including photocopying, recording, taping or information storage and retrieval systems - without written permission of ENECON® Corporation.

Printed in the U.S.A. - April, 2017

