



Greenpipe 1Base

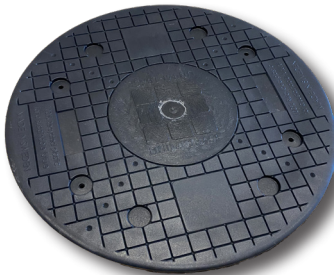
Greenpipe 1Base is a universal foundation. Thanks to the lid’s unique design (works as an adapter) you can anchor all current and future AC charging stations in Greenpipe 1Base. If after a while you would need to replace your charging post to another, one does not have to replace the entire base, but only the lid.

Expand with charging stations as the need increases, without having to dig again!



By installing several Greenpipe 1Base at the first excavation, you are prepared to expand its facility with more charging stations as the need increases. It saves on both time and money, as you can avoid further future extra earthworks etc. All that is left to install for a future charging station, is a covert and any collision protection.

- Quick and easy installation.
- Good working environment for installers.
- Made of 100 % high quality recycled PP-EPDM plastic.
- Up to 80 % environmental savings compared to virgin material.
- The lid’s design contributes to a universal solution for the present and future charging posts.
- Prepare for the future and expand when the need for more charging stations increases. We guarantee that you can install all models of AC chargers up to 22kW until 2040.



Greenpipe 1Base data

Product	Height (cm)	Width (cm)	Length (cm)	Weight (kg)	Pieces/ EU pallet	Insert, extra height (cm)	Article No
Greenpipe 1Base - Foundation AC	62	40	40	15	24	20	12001



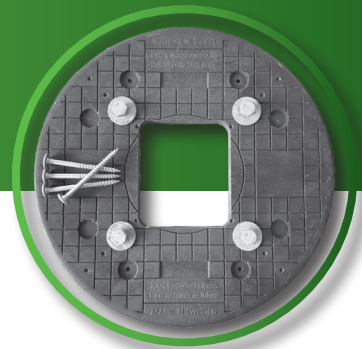
Accessories Greenpipe 1Base



Adapter 1 - GARO LS4



Adapter 2 - 60 mm Pole



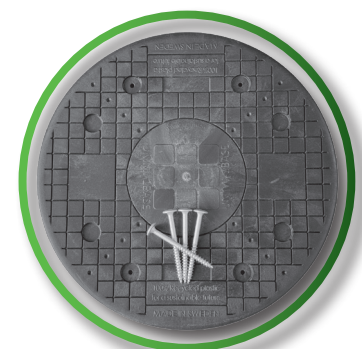
Adapter 3 - 160 x 160 mm



Cast iron lid AC



Protection poles



Plastic lid AC



Product	Height (cm)	Width (cm)	Lenght (cm)	Weight (kg)	Article No
Greenpipe 1Base - Plastic lid AC	2,5	38	38	2,5	12011
Greenpipe 1Base - Cast iron lid AC	1,5	32	32	8	12017
Greenpipe 1Base - Protection poles complete set	100	53	37	18,5	12021
Greenpipe 1Base - Adapter 1 - GARO LS4	2,5	38	38	2,5	12040
Greenpipe 1Base - Adapter 2 - 60 mm Pole	112	38	38	9	12041
Greenpipe 1Base - Adapter 3 - 160 x 160 mm	2,5	38	38	2,5	12042
Steel Adapter Schneider EV-link parking & Pro AC Metal	-	-	-	-	-
Steel Adapter Alfen	-	-	-	-	-
Steel Adapter KEBA/ABB EVLunic	-	-	-	-	-
Steel Adapter Compleo 336 x 130 mm	-	-	-	-	-
Steel Adapter Enercharger 320	-	-	-	-	-
Steel Adapter Ecotap duo	-	-	-	-	-
Steel Adapter Walther Werke SmartEVO duo Erdstück E8ES	-	-	-	-	-
Steel Adapter Keba triangular foot	-	-	-	-	-

Customized Adapter Option:

Greenpipe can offer a customized adapter featuring threaded holes that match your charging post. This solution simplifies the on-site installation process, requiring only the fastening of the pole.

Greenpipe