

# PROJECTS



[www.e-peak.net](http://www.e-peak.net)



# MODERN FACADE

Our construction offerings encompass a wide range of products and solutions designed to meet diverse construction needs.



---

# CONSTRUCTION PROJECTS



## FACADE

- **GLASS ALUMINIUM**
- **COMPOSITE FIBER**
- **CEMENT**
- **COMPOSITE**
- **ALUMINIUM**

Our facade solutions are designed to enhance the aesthetic appeal and functionality of any building. We offer a range of modern materials and innovative designs facades.to create striking and durable

---

# CONSTRUCTION PROJECTS



## FACADE

Whether you're looking for sleek metal panels, elegant glass systems, or sustainable cladding options, our facades provide superior protection against the elements while adding a contemporary touch to your property.



A photograph of a modern building with a glass facade, overlaid with a dark blue semi-transparent filter. The building's glass reflects the sky and surrounding environment. The foreground shows a paved area with a grid pattern.

# **MODERN BUILDING RENOVATION**

Combining innovation with aesthetics, we offer advanced materials and techniques to create sleek, efficient, and sustainable structures.

---

# CONSTRUCTION PROJECTS



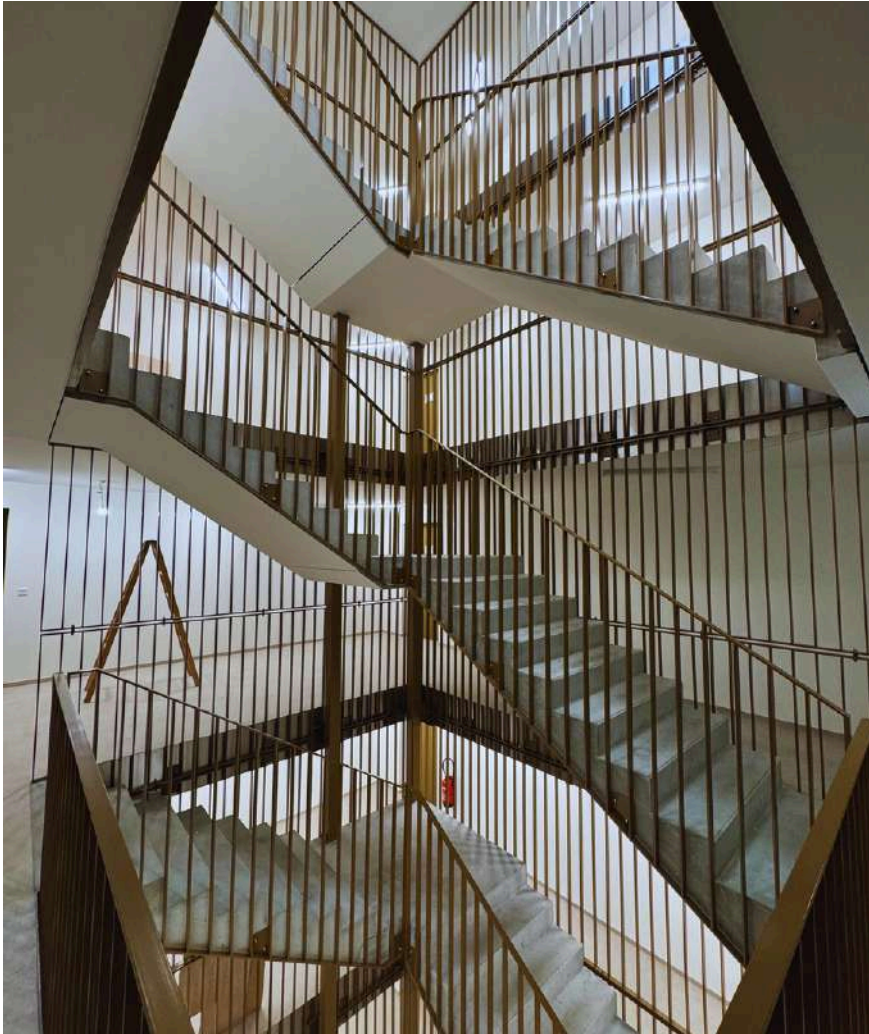
## RENOVATION CONSTRUCTION

At Swisspeak, we specialize in comprehensive renovation projects aimed at modernizing existing functionality. structures and enhancing structures and enhancing their create is contemporary and comfortable living spaces, focusing on both aesthetics and usability. Our goal is this.



---

# CONSTRUCTION PROJECTS



## DECORATIVE FENCE

Elevate your space with elegant decorative stair rails and durable steel stairs. Our decorative stair rails add a touch of sophistication, while our steel stairs offer strength and modern design

---

# CONSTRUCTION PROJECTS



## CAR PORT PROJECTS

Our car port projects provide a robust and efficient solution for vehicle storage

Designed for durability and quick assembly, these structures offer a modern, space-saving approach to parking while ensuring long-term reliability.



---

# CONSTRUCTION PROJECTS



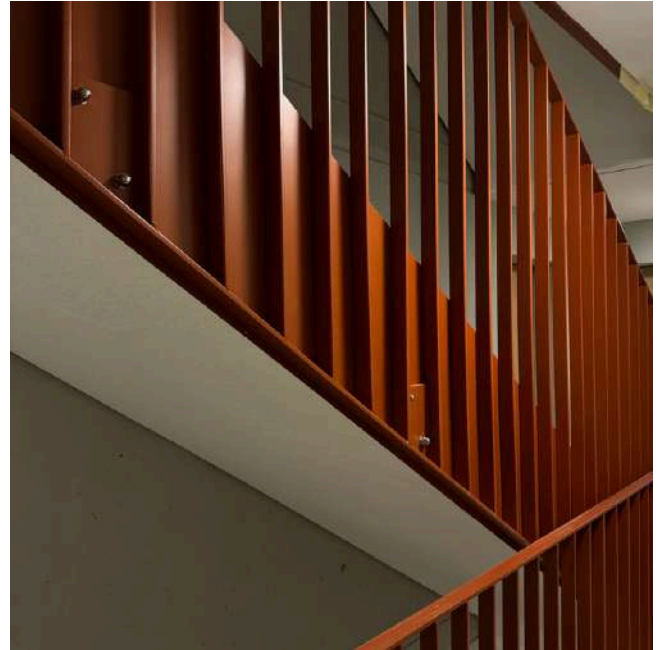
We specialize in building durable and efficient steel structures for both factories and residential properties. Our steel buildings offer long-lasting quality and fast installation, combining strength with rapid construction. Experience the benefits of modern engineering with our high-performance steel solutions.

## STEEL STRUCTURES



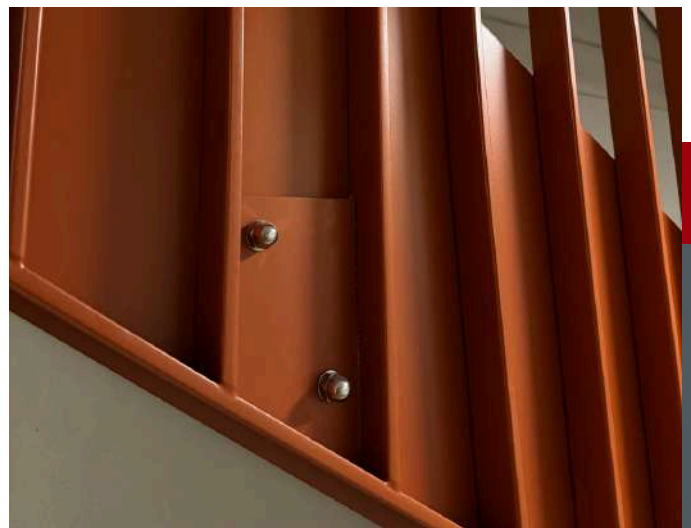
---

# CONSTRUCTION PROJECTS



Elevate your space with our elegant decorative stair railing and durable steel stairs. Our decorative stair rails add a touch of sophistication, while our steel stairs offer strength and modern design. Together, they provide both style and functionality, ensuring a safe and attractive solution for any staircase.

## DECORATIVE STAIR RAILLING





# MODERN STEEL STAIRS

Our steel stairs combine durability with modern design.  
Ideal for both residential and commercial applications.

Location : Switzerland

---

# CONSTRUCTION PROJECTS



## STEEL STAIRS

(Industrial and residential stairs)

Our steel stairs are designed for both industrial and residential use. They offer exceptional strength and durability, combined with a modern look. Perfect for any setting, these stairs provide a reliable and stylish solution for various needs.





# WALL PANELS

We pride ourselves on delivering innovative solutions for modern architecture. One of our key offerings is the installation of decorative exterior wall panels.

---

# CONSTRUCTION PROJECTS



We pride ourselves on delivering innovative solutions for modern architecture. One of our key offerings is the installation of decorative exterior wall panels. These panels not only enhance the aesthetic appeal of buildings but also provide added protection and insulation. Our decorative cladding solutions are designed to meet the highest standards of quality and durability, ensuring a sleek and contemporary look for any structure.

## DECORATIVE EXTERIOR WALL PANELS

Our team of experts uses advanced technology and high-quality materials to create facades that are not only beautiful but also sustainable and energy-efficient. We understand the importance of combining form and function, which is why our panel systems are engineered to withstand the elements while maintaining their aesthetic integrity over time.



---

# AFFORDABLE **PRICES**, FAST **DELIVERY**



# OUR BRANDS



## MULTI-PURPOSE PROTECTIVE COVER

It protects valuable floors (parquet, marble, ceramics) and items (furniture, countertops, sinks) during construction and renovation.



XPHORUS

## SPRAY FOAM INSULATION

Our closed-cell spray foam insulation offers excellent thermal and acoustic protection.



XPHORUS

## CHEMICAL ANCHOR

Medium viscosity, high-strength pipe sealant well penetrating into fine threads.



☎ +90 539 645 7176

🌐 [www.e-peak.net](http://www.e-peak.net)

✉ [info@e-peak.net](mailto:info@e-peak.net)

📍 Istanbul, TURKEY