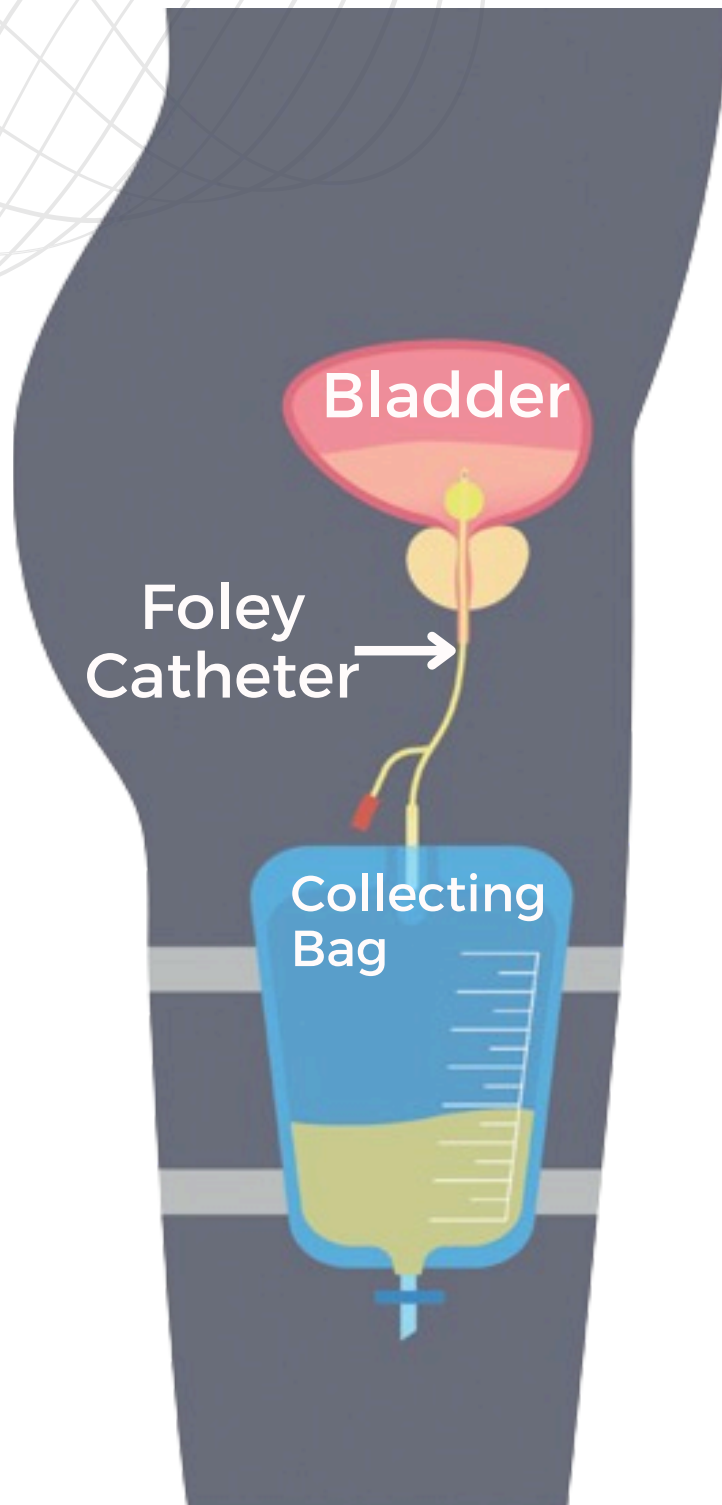


**THE NEW PARADIGM FOR URINARY  
CATHETERIZATION BASED ON NURSING EXPERIENCE**

SMART DESIGN - HEALTHCARE REVOLUTION





Quality of life



Emergency visits



Dependency



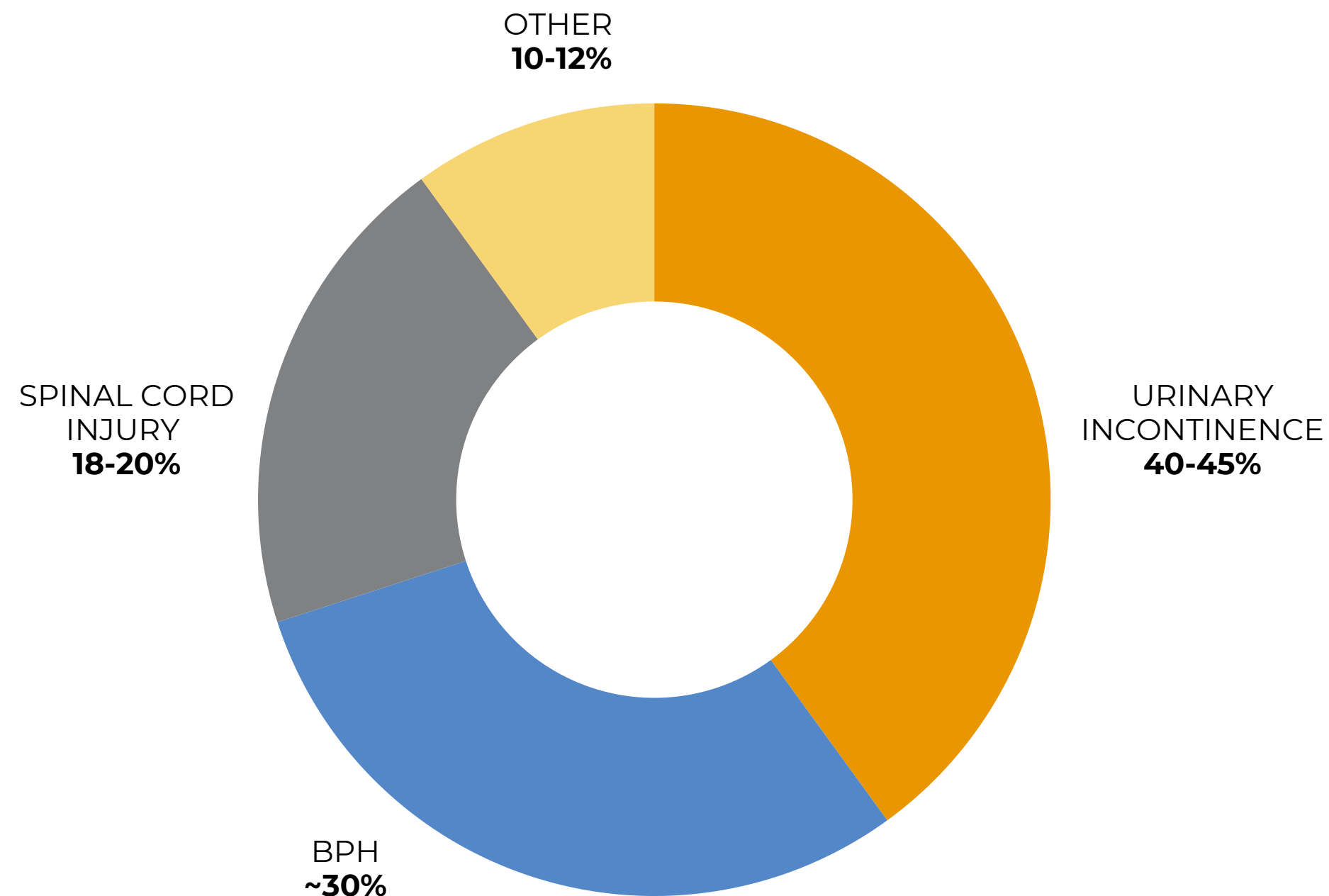
Infections of multifactorial origin

29.000 deaths/year  
>900 M€ cost/year

Patient experience:



## USER PROFILE (2030 - USA & EUROPE)



URINARY  
INCONTINENCE

40 - 45%  
18M patients

BENIGN PROSTATE  
HYPERPLASIA (BPH)

~30%  
13.5M patients

SPINAL CORD  
INJURY

18-20%  
9M patients

OTHERS

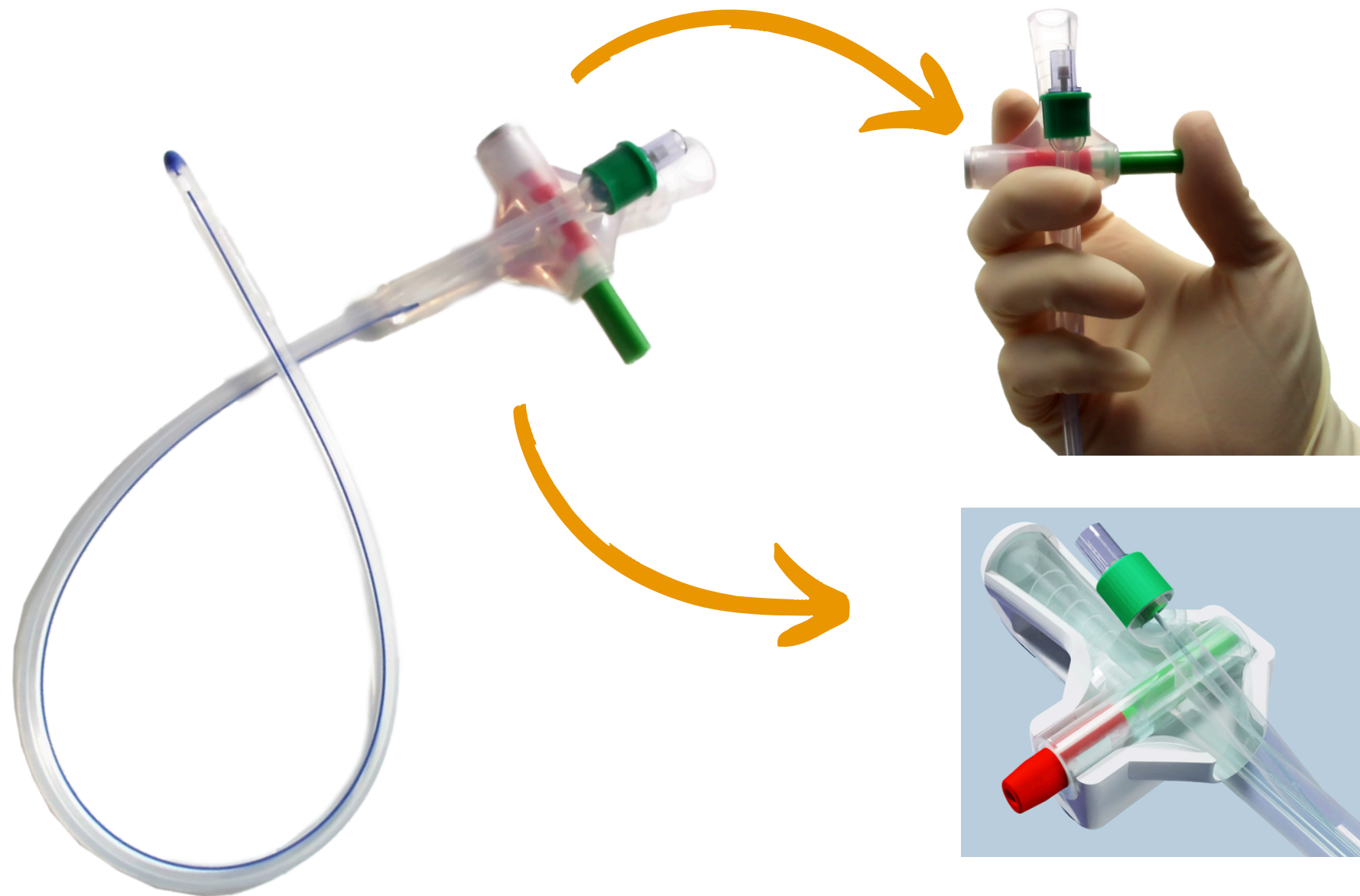
10- 12%  
4.5M patients

*Fully integrated urine controlling system*

*No accessories needed for drainage*

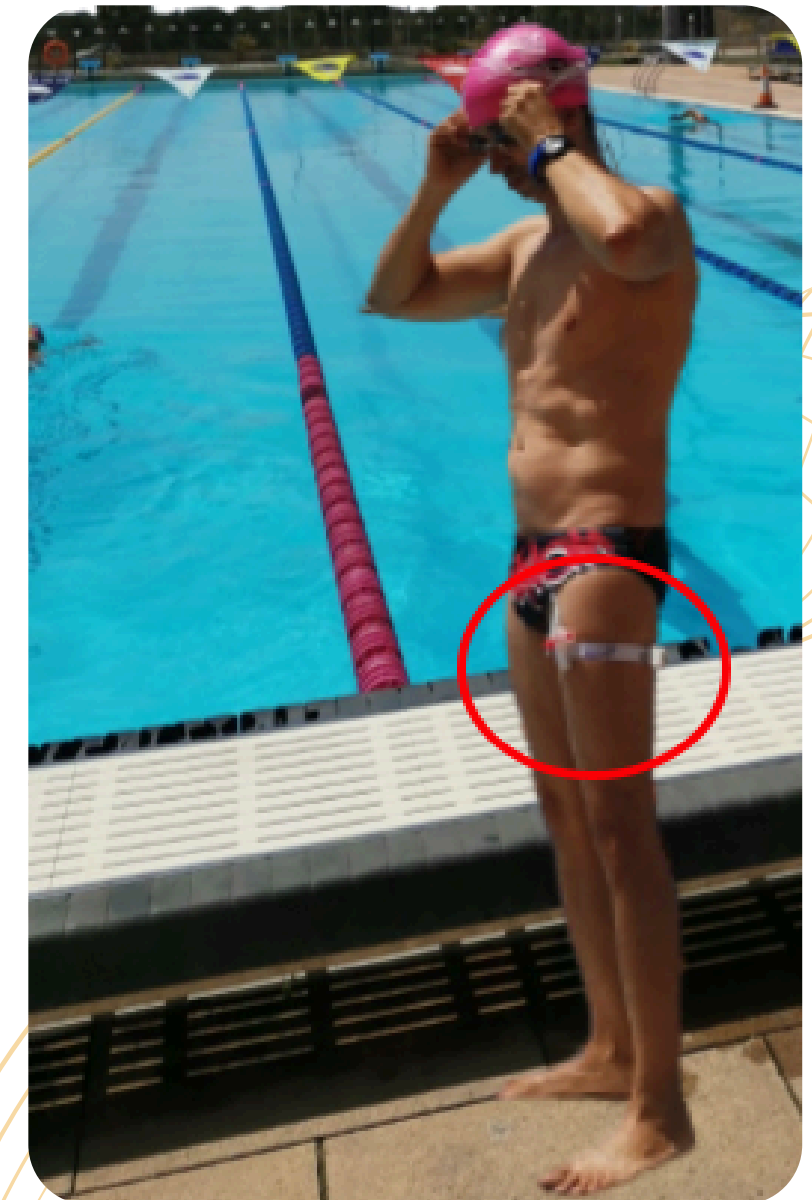
*Multifactorial infection prevention and improved quality of life*

How to use  
T-Control®



**SLIDE VALVE FOR  
OPENING AND CLOSING  
THE URINE FLOW**

**HOLDER FOR  
CATHETER FIXATION  
AND SAFETY SEALING**





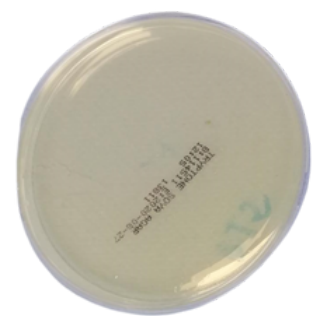
## IN-VITRO VALIDATION

*Significant differences confirmed regarding biofilm creation*

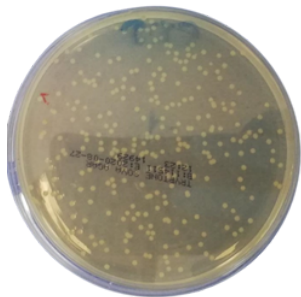
Article



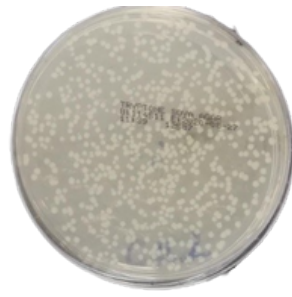
Common Foley +  
bag



24h



48h



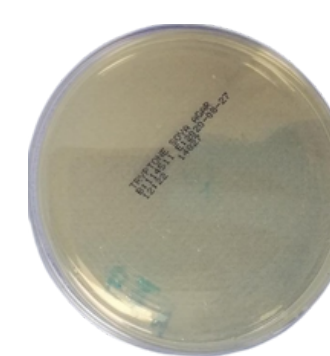
72h



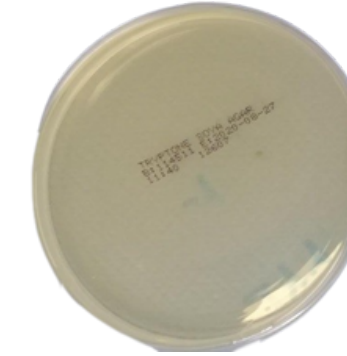
5 DAYS



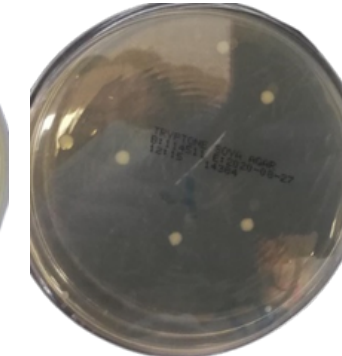
T-Control®



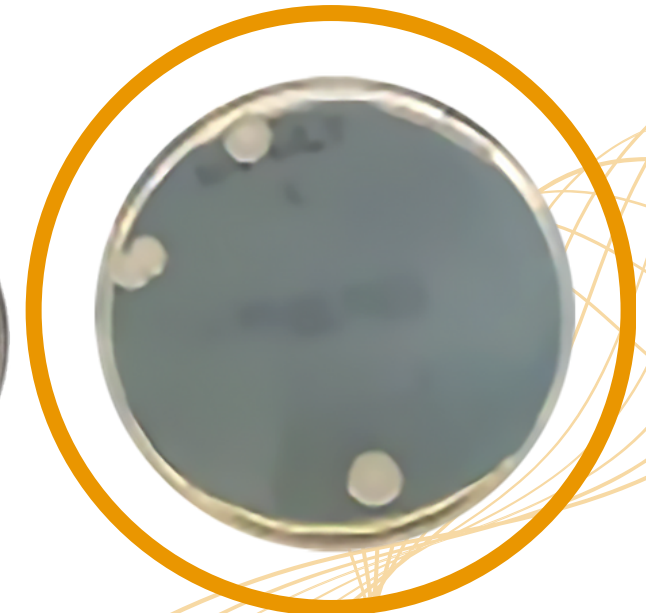
24h



48h



72h



5 DAYS

T-Control® expected to prevent 35-40% of today's infections.

# USER TESTING RESULTS



## HEALTHCARE PROFESSIONALS

**41%** 

Less accidental spillages

**23%** 

Decrease of cross-contamination

**-9%** 

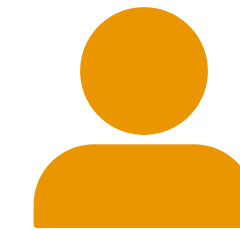
Mental effort

**-12%** 

Physical effort according to NASA TLX



Video  
living-lab



## PATIENTS

**100%** 

Believe that it is easy and safe to use

**100%** 

Agree that it provides added value



Article

# CLINICAL VALIDATION

## ONGOING STUDY

**Comparative, Randomized, Prospective T-Control® vs Foley (Bag/Current practice):** T-Control® vs Foley (bag). **n=** Total 70 (35. T-Control®/35. Foley Catheter) in 2 different sites.

**Objectives:** 1) Rate and magnitude of infections; 2) Quality of Life; 3) Usability and adverse effects; 4) Cost-impact.

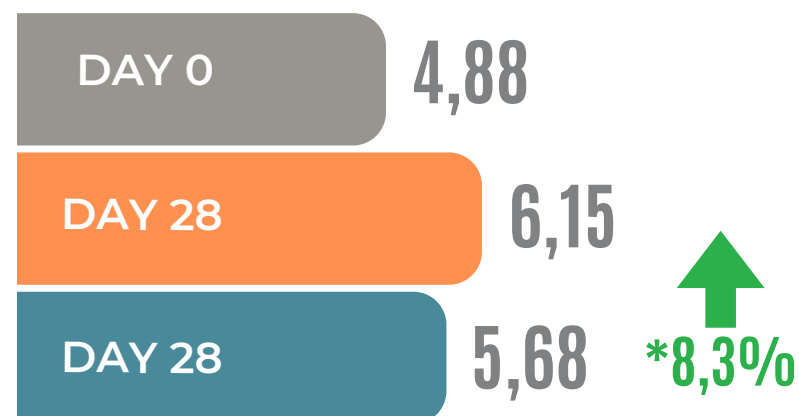
**Patient profile:** Ambulatory care - Chronic need of catheterization.

Poster

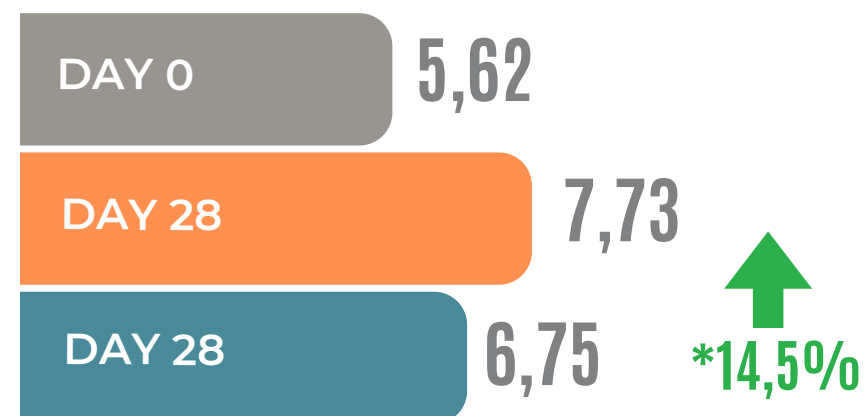


● Average of T-Control® & Foley groups ● T-Control® group ● Foley group

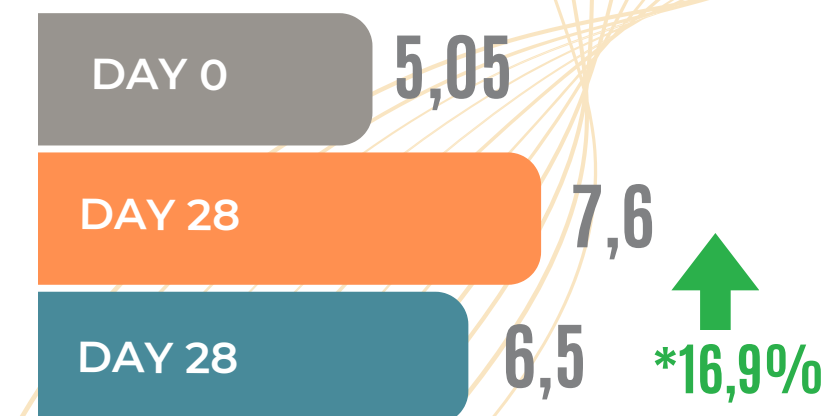
### OVERALL QOL



### POSITIVE IMPACT ON LIFESTYLE



### SATISFACTION WITH THE CATHETER



Score from 1 to 10 (with 1 being the lowest and 10 being the highest)  
Remarkably, no adverse effects have been reported

*\*Poster about preliminary results presented at ICS 2024 Congress*

# CLINICAL VALIDATION

 **PLANNED FOR 2025**

**Comparative, Randomized, Prospective:** T-Control® vs Foley (current practice)

**Contries:** Spain & Portugal

**Recruitment initiation expected:** Q1 2025

**n** Total 300 (150 T-Control®/150 Foley Catheter) at 6 different sites

**Objectives:** 1) Rate and magnitude of infections; 2) Quality of Life; 3) Usability and adverse effects; 4) Cost-impact.

**Patient profile:** Ambulatory care - Chronic need of catheterization.



**CLINICAL STUDY  
SUPPORTED BY EU FUNDS**



## SOCIAL IMPACT OF THE INVESTMENT

