

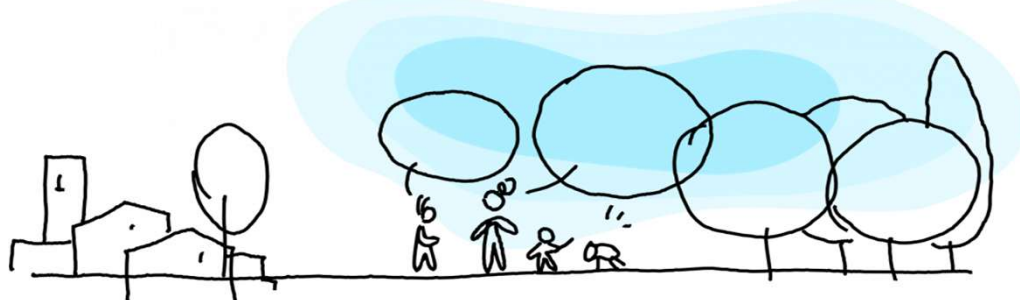
A Beautiful, Inclusive, Sustainable



## ISLAND LAB FOR RESEARCH AND INNOVATION

Assoc. Prof. Ebru Yetiskin, Istanbul Technical University, Department of Sociology

yetiskin@itu.edu.tr



New European Bauhaus  
beautiful | sustainable | together

**Call >> A research agenda for a beautiful, inclusive and sustainable transformation of neighbourhoods**

**Destination >> Connecting the green transformation, social inclusion and local democracy**

**HORIZON-NEB-2025-01-PARTICIPATION-01: The impact of common space on neighbourhood communities**

1

01/06/25

New  
European  
Bauhaus

Islands are becoming more innovative, acting as “living labs” to develop social, technological and economic solutions that contribute to EU policy goals in green & digital transition, climate adaption, supporting people, strengthening our societies and social model.

ITÜ

## BEAUTIFUL, INCLUSIVE AND SUSTAINABLE TRANSFORMATION of Princes' Islands in Istanbul, Türkiye

**5 Neighbourhoods:** Burgazada, Heybeliada, Kınalıada, Maden and Nizam (Büyükkada)

**Total Area:** 11 km<sup>2</sup>      **Population (2022):** 16.690

**Economic Activities:** Tourism, Construction, Creative Industries

**Challenges:** Overtourism, migration, loss of cultural heritage and biodiversity, gentrification, earthquake risks

Social immunity and resilience building by new commons spaces and commoning practices of Istanbul Metropolitan Municipality

Open for Research and Innovation Action

New European Bauhaus Facility - Matchmaking event 2025  
Assoc. Prof. Ebru Yetiskin, Istanbul Technical University

### Objective 1: Social Impact Analysis

Of new common spaces co-created by Istanbul Metropolitan Municipality, which transformed cultural heritage sites into museums and cultural spaces.

Of the access, the use and the experience of common spaces by different groups of neighbourhood communities.

Of the green and digital transformation solutions.

### Objective 2: Policy Recommendations

To challenge vulnerabilities for social inclusion, sustainable futures and empowered democracy

To better understand the effects of the new common spaces on inhabitants' behavior, health, sense of belonging, diversity, inclusion, security, resilience

For capacity building of relevant stakeholders to integrate insights in policies, strategies, plans and measures for the regeneration of common spaces in neighbourhoods.

< Partner search for >

### Objective 3: Co-create opportunities to produce social, cultural and local economic value.

#### Research and Innovation Action (RIA) : Integration of Creative Industries

Co-design of « **Island Prototypes** » for the green and the digital transition of neighbourhoods in Princes' Islands.

Digital storytelling tools and methods for the preservation of cultural heritage, science communication and civic participation

A mobile application for innovative funding and new business models for creative tourism and circular economy



## PHASE 1

The study of a range of common space projects  
**International residency programs (Fall-Spring)**

**An open call for the neighbourhood communities in Princes' Islands, together with artists, scientists, architects, designers, engineers, activists and policy makers.**

**Social impact analysis with citizen engagement via artistic and scientific investigations**

**Co-development of green solutions & policy recommendations.**

**Island Lab website for citizen science and civic participation.**

**Week 1: Observation & Challenging:** Interactive seminar series will be organized along with a picnic and a walk performance for the observation and discussion of various problems and challenges. *#commons*

**Week 2: Data Collection & Mapping:** Vulnerabilities of different groups will be analyzed and mapped. An online survey and semi-structured interviews will be conducted.

**Week 3: Experimentation & Workshop:** Policy recommendations will be designed and experimented. Findings and experimentation outputs will be examined with local community participants, activists and policy makers.

**Week 4: Exhibition & Co-creation:** Artistic and scientific explorations will be transformed into visual productions (icons, installations, video essays, sculptures) to be presented in a common space exhibition.

## PHASE 2

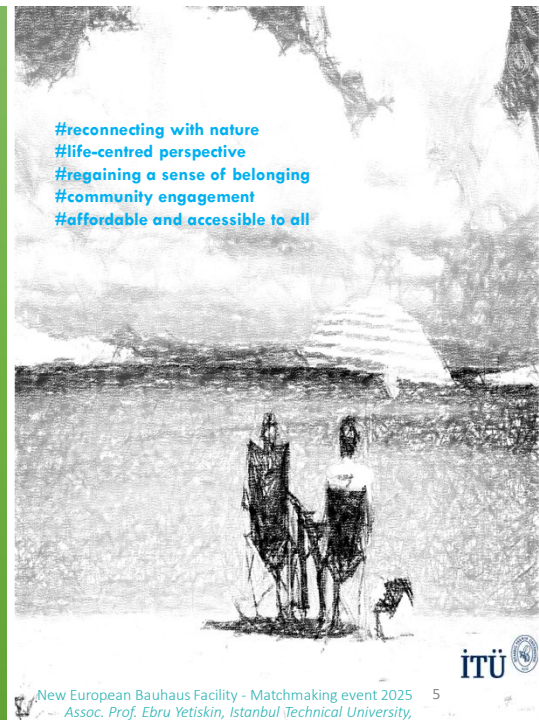
**Expected Outcome for Research and Innovation:**  
A mobile application recommendation for creative tourism, green transition, social inclusion and local democracy

**Participatory Process and Game Design Methods:** Co-created common spaces will be used to co-develop new excursion routes for creative tourism, sustainable development and transdisciplinary knowledge production in Princes' Islands.

**Storytelling and Multilevel Engagement:** Co-created icons will be used as guide signs for exploring the histories and stories of natural/cultural heritage of neighbourhood communities, which will be shared as podcasts, accessible via a mobile phone application.

**Circular Economy:** Co-created icons will be codeveloped into accessible design products, souvenirs as well as a cryptocurrency, which will be open to be used for sustainable and creative tourism in common spaces in Princes' Islands.

01/06/25



New European Bauhaus Facility - Matchmaking event 2025  
Assoc. Prof. Ebru Yetiskin, Istanbul Technical University,

## COMMONERS

The project integrates different actors (i.e. public authorities, local actors from the targeted neighbourhoods, civil society, private owners, cultural institutions...) who works for common spaces.

#inclusive  
#sense of belonging  
#community engagement  
#together

## RESEARCH COMMONS

The project conducts scientific and artistic investigations by creating transdisciplinary research commons.

We aim to utilize the gained knowledge as open access to co-develop solutions and co-create responses to challenges.

#sustainable  
#transdisciplinary approach  
#multi-level engagement  
#RIA actions

## COMMONING

The project embraces a participatory process that fosters interaction, co-creation and co-development of first-hand experience based on insights for experimental and innovative ideas.

#beautiful  
#socialfabric  
#participatory process  
#accessible  
#policy-recommendations

A Beautiful, Inclusive, Sustainable

## ISLAND LAB FOR RESEARCH AND INNOVATION

Explore the impacts of commons spaces and commoning practices on neighbourhood communities.

Contribute to wider social acceptance of the innovative solutions that challenge the extractivist economy, accelerate the green and digital transformation and strengthen citizens' trust in democracy, sustainable futures, resilience and well-being.

Support the development of future citizen engagement through participatory process and transdisciplinary research by workshops, focus group meetings and activities designed for vulnerable groups in neighbourhood communities in common spaces.

Assoc. Prof. Ebru Yetiskin  
Istanbul Technical University, Department of Sociology  
yetiskin@itu.edu.tr

New European Bauhaus Facility - Matchmaking Event 2025 - Coordinator & Partner Search for Project Development

01/06/25



### ABOUT

**Assoc. Prof. Ebru Yetiskin**  
Istanbul Technical University, Department of Sociology

### Education

Media and Communications, Science and Technology Studies (STS), Sociology

### Research Interests

Democratic Participation and Inclusive Governance  
Commoning Practices and Political Ecology for Sustainable Futures  
Critical Engagement with Art, Science and Technology  
Knowledge and Ignorance Production in Disaster Risk Governance

### Research Skills

Qualitative research methods and Curatorial research  
Coordination of a national research project

### Relevant Research Articles and Academic Works

(2025). *Political Ecology and Possible Futures in Turkey*, *Technoetic Arts*, 23:1 (TBA)  
(2025). *Ignorance production in national disaster risk governance and emergency response-abilities of commoning collectives: The 2023 earthquakes in Turkey*, *International Journal of Disaster Risk Reduction*, No.116, 105-114. DOI: 10.1016/j.ijdrr.2024.105114  
(2020). *Paratactic Commoning: Collective knowledge production networking as political struggle*. *Popular Communication*, 18(3), 216-232, DOI: 10.1080/15405702.2020.1781860  
(2018). *Narrative Landscape: The Transformation of Memory(scape)-making in Gallipoli Peninsula*. *Space and Culture*, 21(3), 274-290, DOI: 10.1177/1206331217735299



#Sociology #Curator  
#Science, Technology, Art







### Relevant Thesis Advisory

Tuncaeelli, E. C. (TBA) "Art Collectives as a Commoning Practice in Contemporary Art in Türkiye: The Case Study of Zero Movement", Art History MA Thesis, Istanbul Technical University.  
Taşdemir, H. (TBA) "Public Engagement with Green Technologies: The Case of European Bauhaus Applications", Science, Technology, Society MA Thesis Proposal, Istanbul Technical University.

### Awards

(2022) The 2nd Rosalind Franklin Society (RFS) Science Award,  
Best Paper by a Woman or Underrepresented Minority in Science, United States.  
(2020) Taksim Urban Design Competition, Equivalent Mansion Award,  
Istanbul Metropolitan Municipality, Türkiye  
(2017) Interactive Memory Landscapes at the Intersection of Death and Life,  
Gallipoli Historical Site, New Martyrs' Cemetery Designs, Project Idea Competition,  
The 3rd Mansion Award, The Ministry of Culture and Tourism of the Republic of Türkiye

### Membership

IstanbulLab – Science, Technology and Society Research Platform  
FEMeeting – Women in Art, Science and Technology  
Association of International Art Critics

### Academic Works

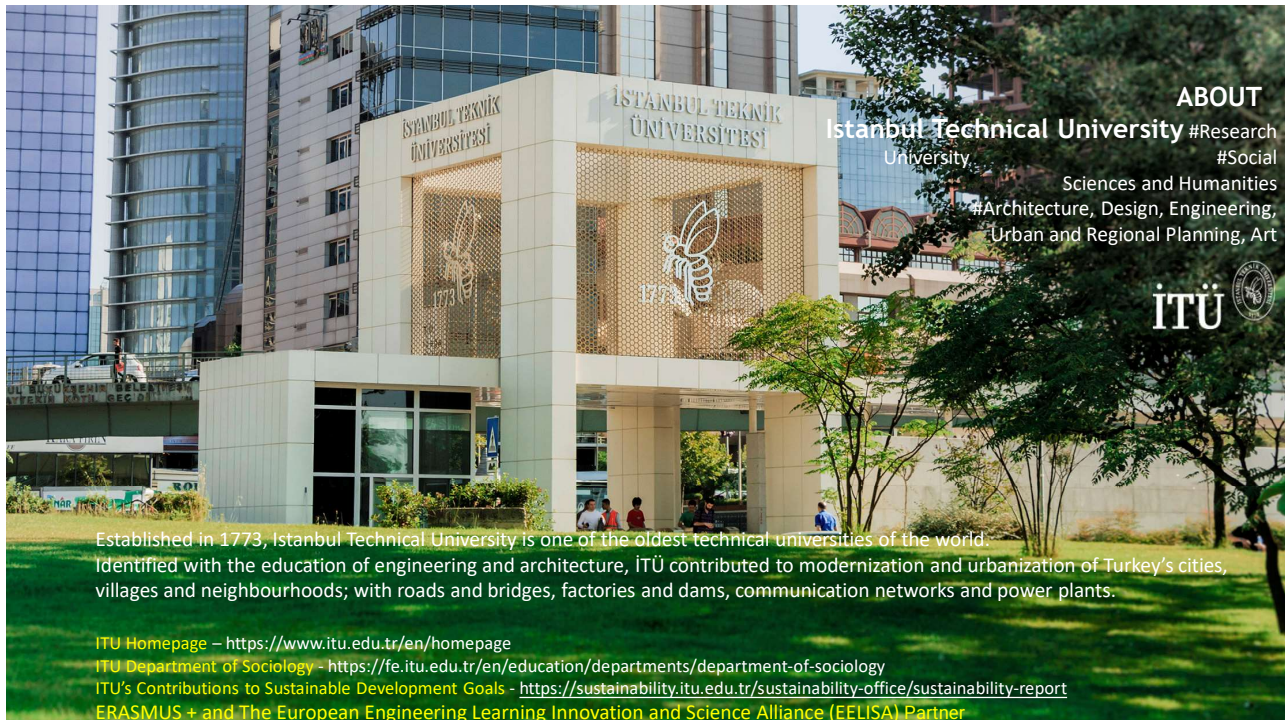
<https://akademi.itu.edu.tr/en/yetiskin/Publications>



Assoc. Prof. Ebru Yetiskin  
Department of Sociology  
Istanbul Technical University



9



**ABOUT**  
Istanbul Technical University #Research  
University #Social  
Sciences and Humanities  
#Architecture, Design, Engineering,  
Urban and Regional Planning, Art

Established in 1773, Istanbul Technical University is one of the oldest technical universities of the world. Identified with the education of engineering and architecture, İTÜ contributed to modernization and urbanization of Turkey's cities, villages and neighbourhoods; with roads and bridges, factories and dams, communication networks and power plants.

ITU Homepage – <https://www.itu.edu.tr/en/homepage>  
ITU Department of Sociology – <https://fe.itu.edu.tr/en/education/departments/departments-of-sociology>  
ITU's Contributions to Sustainable Development Goals - <https://sustainability.itu.edu.tr/sustainability-office/sustainability-report>  
ERASMUS + and The European Engineering Learning Innovation and Science Alliance (EELISA) Partner