

# Flexible Facilities Solutions

---

ROB VAN LIEFLAND, CEO

# Our Expertise



WE ARE SPECIALISTS IN THE DESIGN AND DELIVERY OF COMPLEX MODULE AND MODULAR HEALTHCARE FACILITIES



---

**Over 30 years' experience of Mobile, Modular and Module** design, build and operations

---

**250+ projects delivered across 7 countries,** including The Nordics, Benelux, UK, Germany and the Caribbean

---

Range of options **from short-term temporary to sustainable permanent builds**

---

**Solutions for very large teaching hospitals to small private clinics & community hospitals**

---

**Bespoke solutions for even the most complex requirements**



# Our Services with mobile and module solutions



DESIGN, BUILD AND DELIVERY OF  
COMPLETE HEALTHCARE FACILITIES



COMMUNITY  
HEALTHCARE



ADDITIONAL  
CAPACITY



DISASTER  
RELIEF



SERVICE  
REDESIGN



DEFURBISHMENT  
DECANT



EMERGENCY  
RESPONSE





# Focus Solutions in Modular Healthcare Facilities



---

**Surgical** – Operating Theatres, Hybrid Operating Theatres, Operating Theatre Complexes, Private Clinics

---

**Endoscopy** – Endoscopy suites

---

**Outpatients** - Dialysis Centres, Diagnostics Centres, Minor Injuries Units, Outpatients Clinics

---

**Decontamination & Sterilisation** – Central Sterile Departments, Endoscope Decontamination Units

---

**Bespoke solutions** – can include almost any additional facility i.e. ICU, consultation rooms, staff changing areas, reception and waiting areas





# Modular Healthcare Benefits



---

**Flexible** – can be relocated or modified as requirements change and new technology can be introduced

---

**Quick to install** – the build time can be reduced by up to 50% compared to a traditional build

---

**Cost effective** – building off-site brings savings and the hire model means no maintenance costs

---

**Compliant** – meets the most common specifications

---

**Customisable** – modular healthcare facilities can be fitted out to each client's particular requirements

---

**Sustainable** – smaller carbon footprint through low impact at the site and the re-use of buildings



# Temporary

---

Supporting you to maintain or enhance your service provision

Standard units, but large variety in services

CSSD, OT complexes, wards

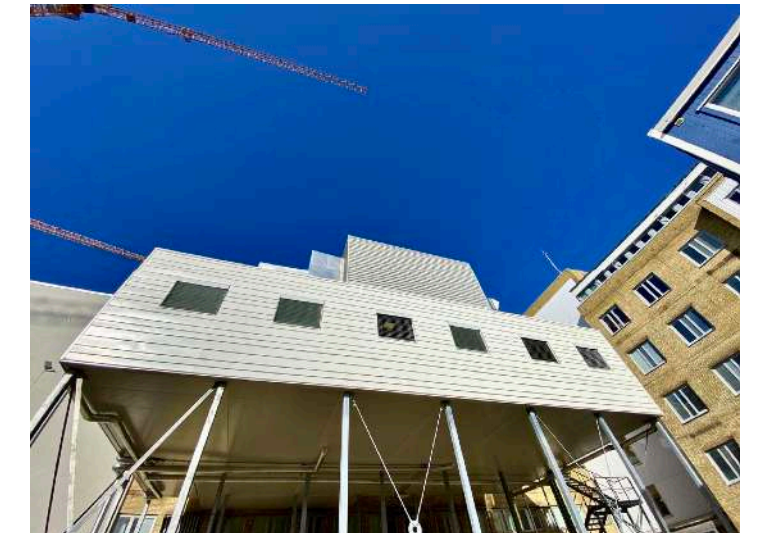
# Permanent

---

Freedom in design, unit sizes and appearance

Fully flexible to the future, units can be modified later

Short building time, relocatable, innovative, sustainable

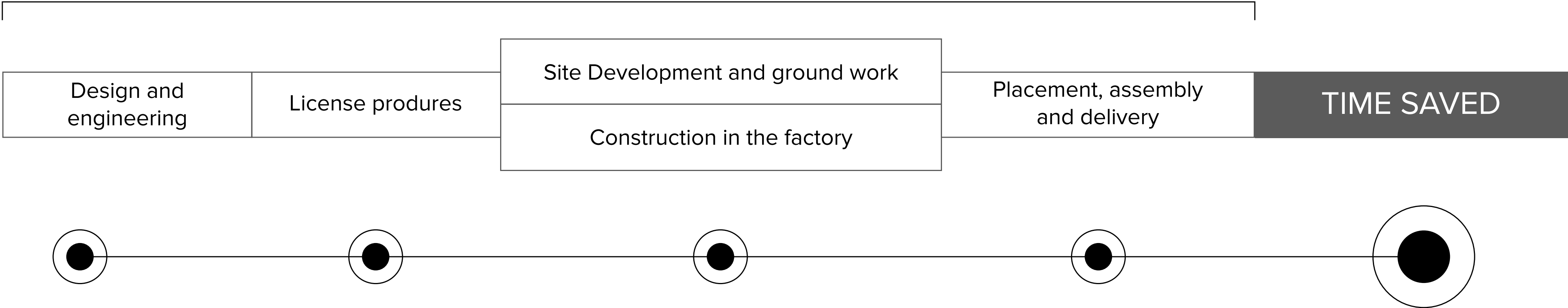




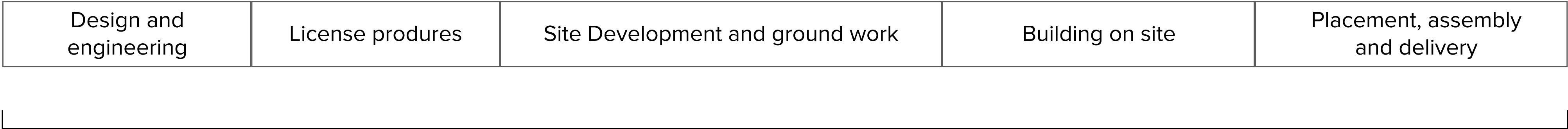
# Modular Building Timeline



## MODULAR BUILDING TIME



## TRADITIONAL BUILDING TIME



# Overview of recent projects

including drawings and general  
information

---



# Mobile

— Modular

— Module





10.000

Liters of water damaged the  
clinics operating theatre

4

Days between delivery and  
full installation and validation

12

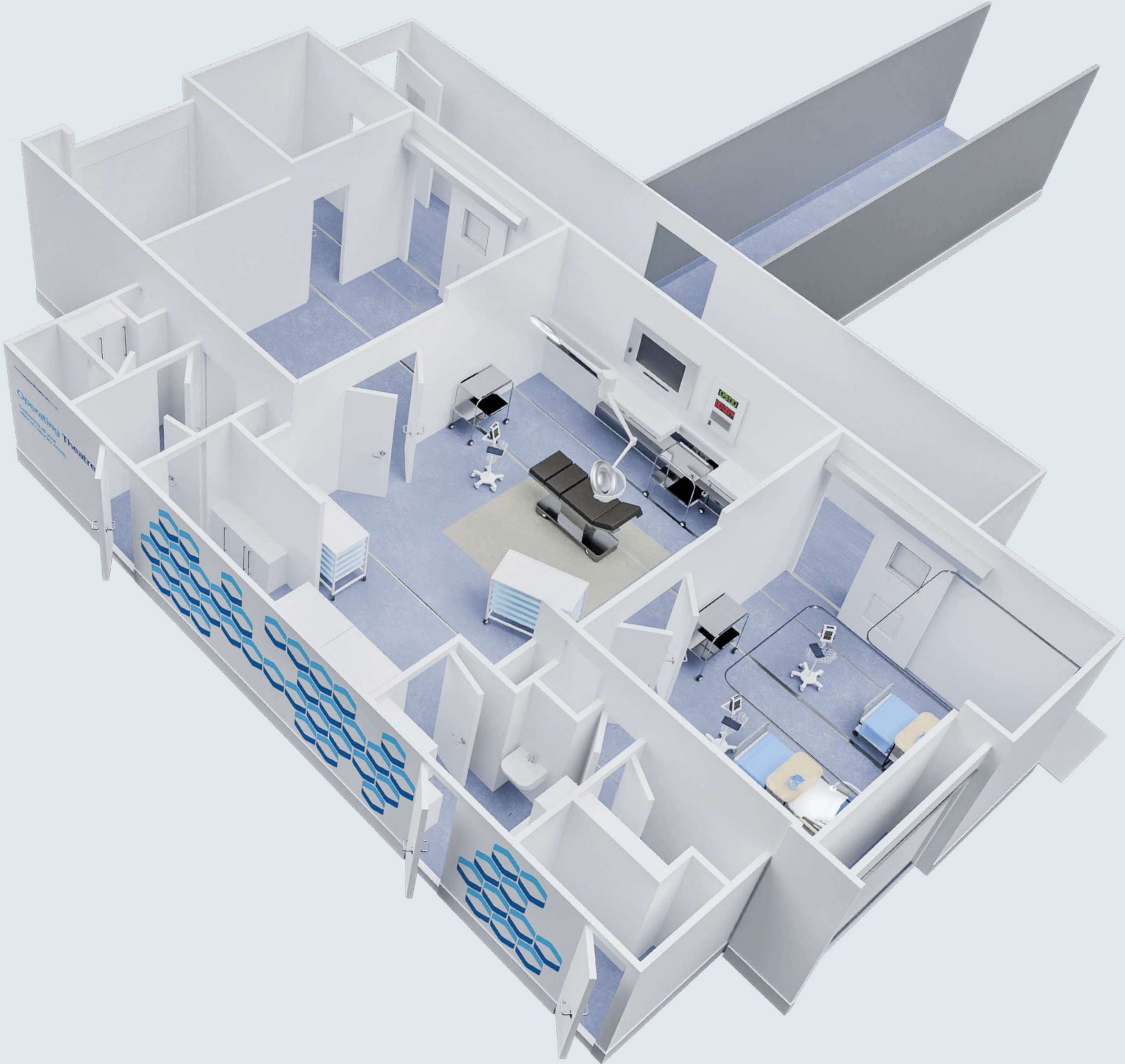
Days between initial enquiry  
and first patients treated



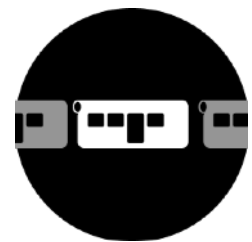
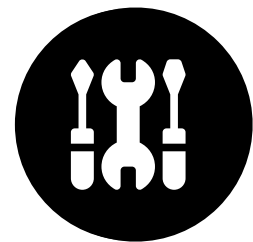




**HAAGLANDEN CLINIC, DEN HAAG**  
Mobile operating theatre

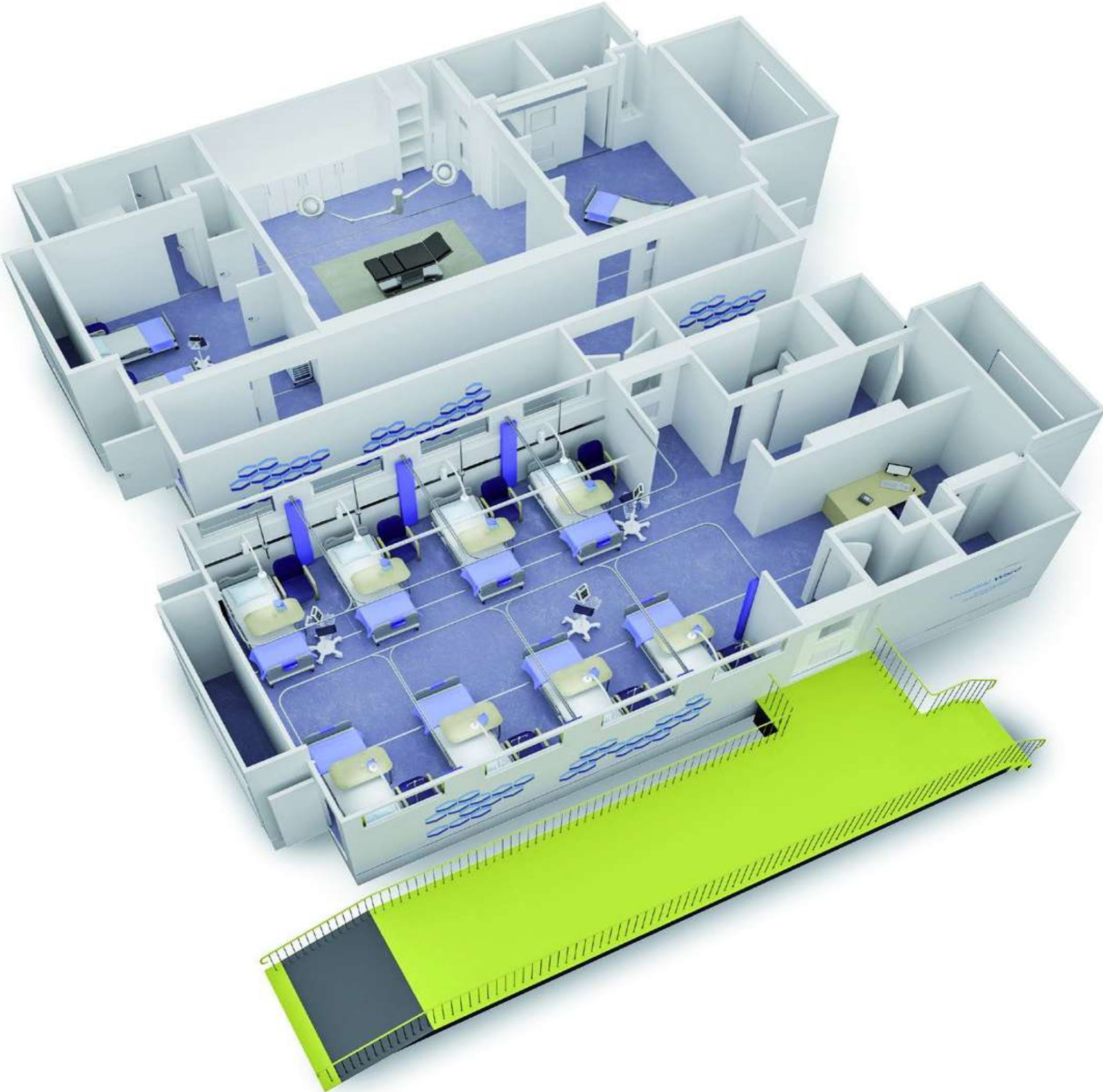






MILTON KEYNES UNIVERSITY HOSPITAL

Mobile Day Case center



2

months from contract  
signature to completion

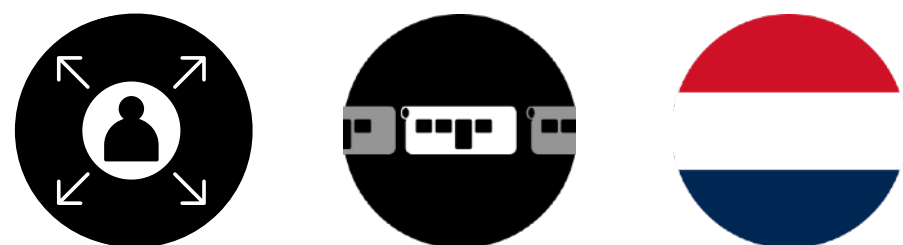
>220

footprint meeting the strictest  
surgical requirements

110

surgical procedures  
performed per month





## SERVICES IN REMOTE AREAS, SMALL UNIT, EUROPE

Radiology services, X-ray, Mammography, GP services, mother and baby care



**3**

months from contract  
signature to completion

**>15**

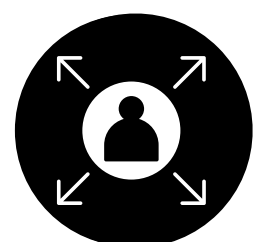
footprint

**>50**

procedures performed per  
day

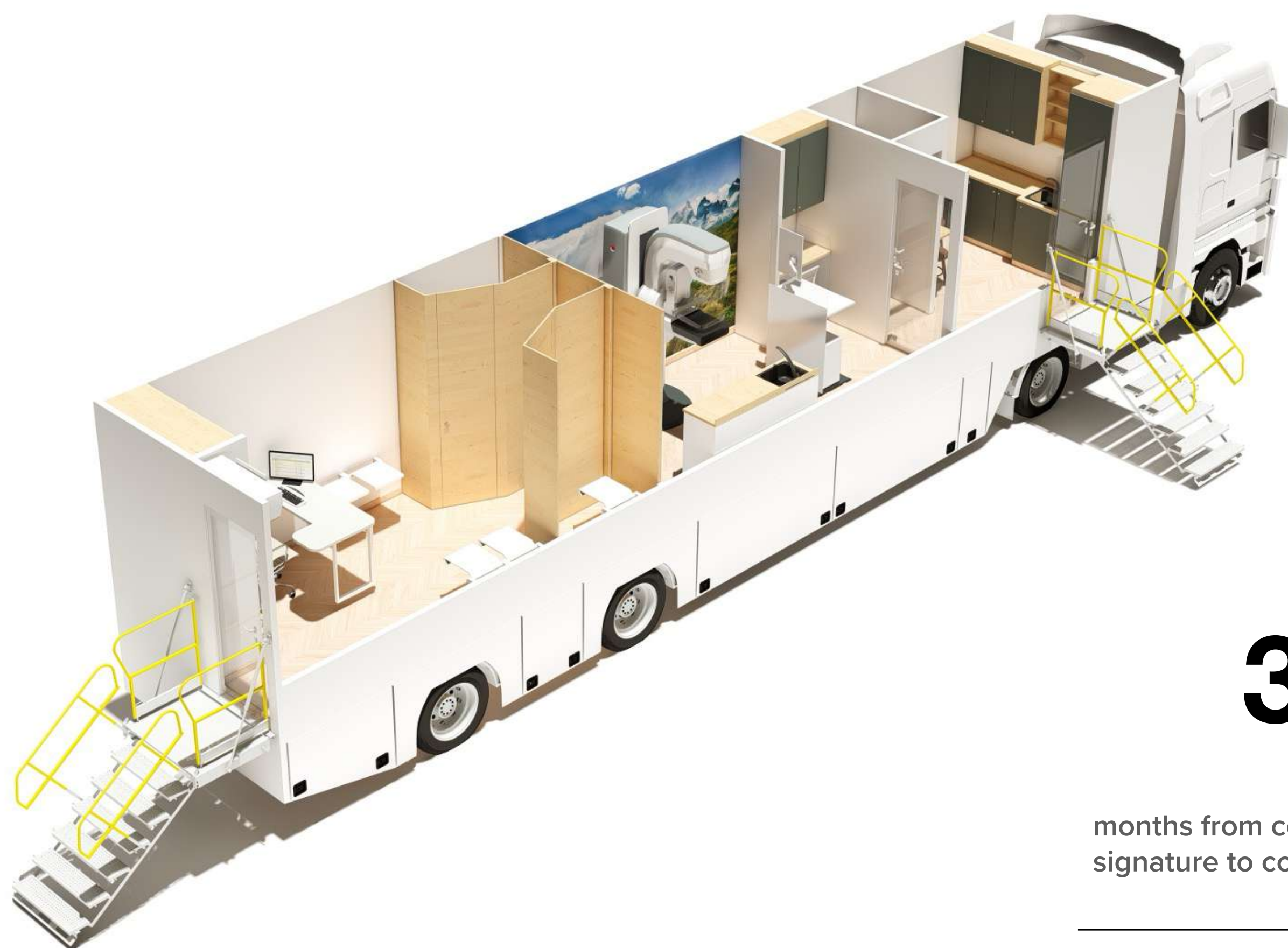
---





## SERVICES IN REMOTE AREAS, LARGE UNIT, EUROPE

Radiology services, X-ray, Mammography, GP services, mother and baby care



**3**

months from contract  
signature to completion

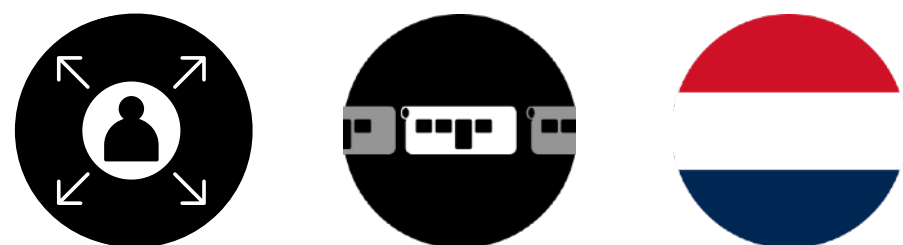
**>40**

footprint

**>50**

procedures performed per  
day





SERVICES IN REMOTE AREAS, LARGE UNIT, EUROPE

Radiology services, MRi, CT and PET/CT scanners



3

months from contract  
signature to completion

>40

footprint

>50

procedures performed per  
day

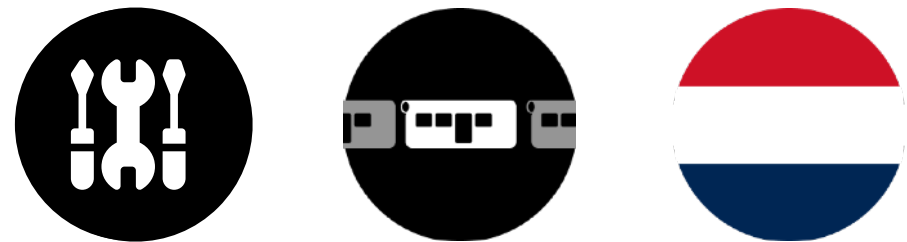


— Mobile

**Modular**

— Module





**BERGMAN CLINICS, DEN HAAG**  
Operating theatre complex, temporary during renovation



3

months from contract  
signature to completion

>1000

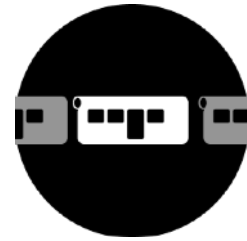
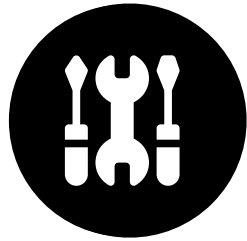
footprint meeting te strictest  
surgical requirements

12

orthopaedic procedures  
performed per day



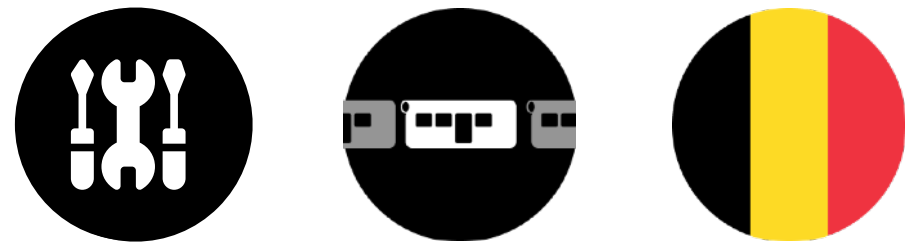




# BERGMAN CLINICS, DEN HAAG

Operating theatre complex, temporary during renovation





## ERASME UNIVERSITY HOSPITAL, BRUSSELS

Sterilisation department (CSSD)



# 360

m2 of usable CSSD surface  
including a logistical corridor



# >1000

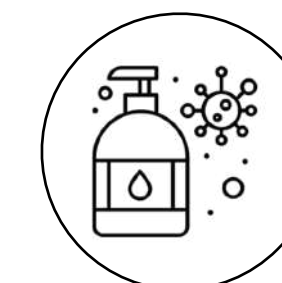
DIN capacity per day, with a  
throughput time of 2 hours



# 29

OT's have been fully  
supported using this CSSD

4



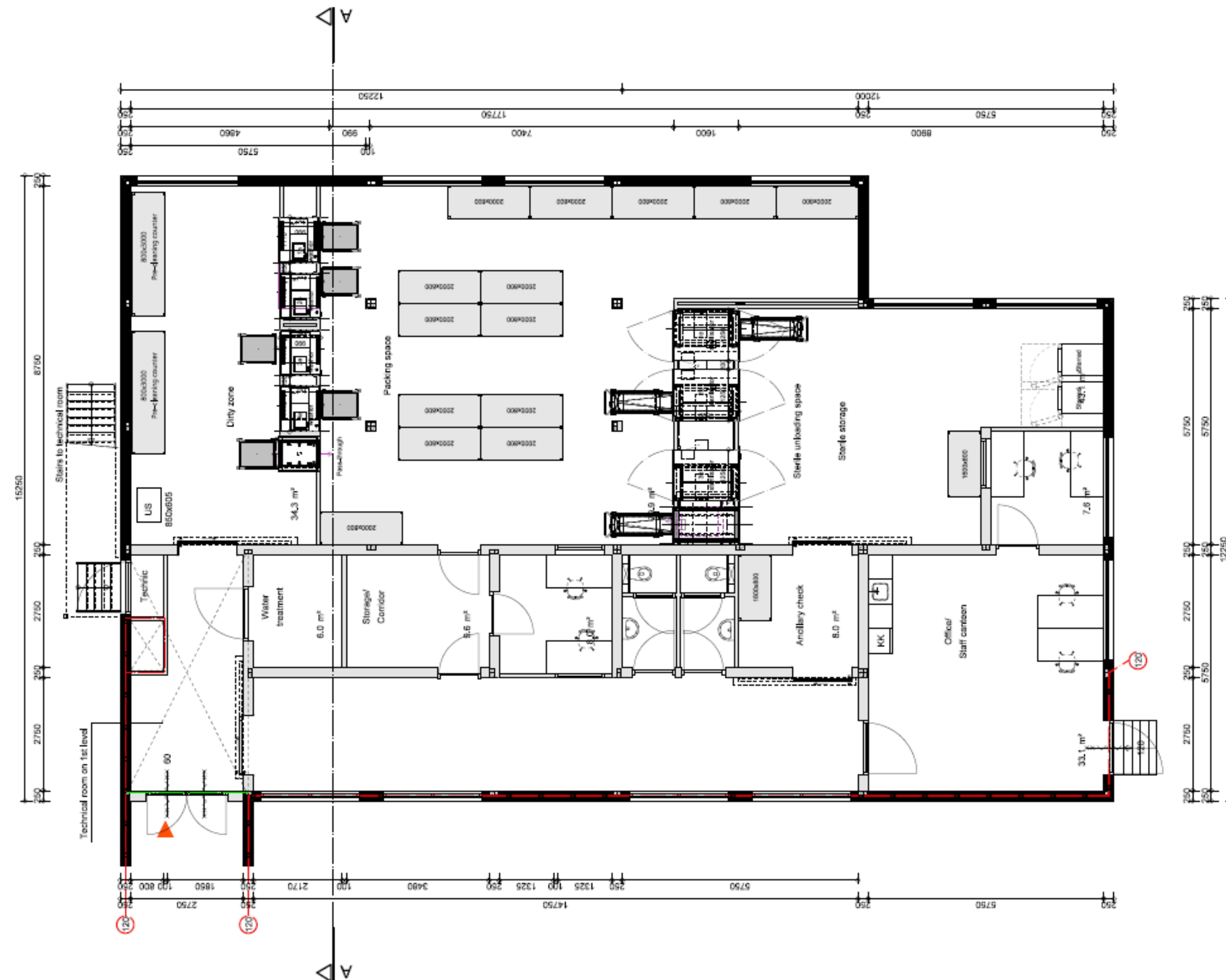
3



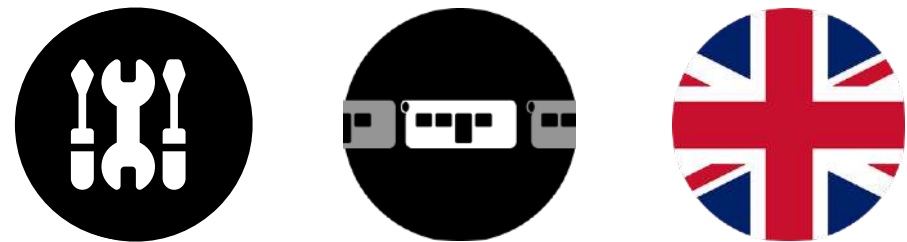




Sterilisation department (CSSD)







## NEWCASTLE HOSPITALS, WESTGATE CATARACT CENTRE

OT complex (3 OT's) with supporting area's



# >1500

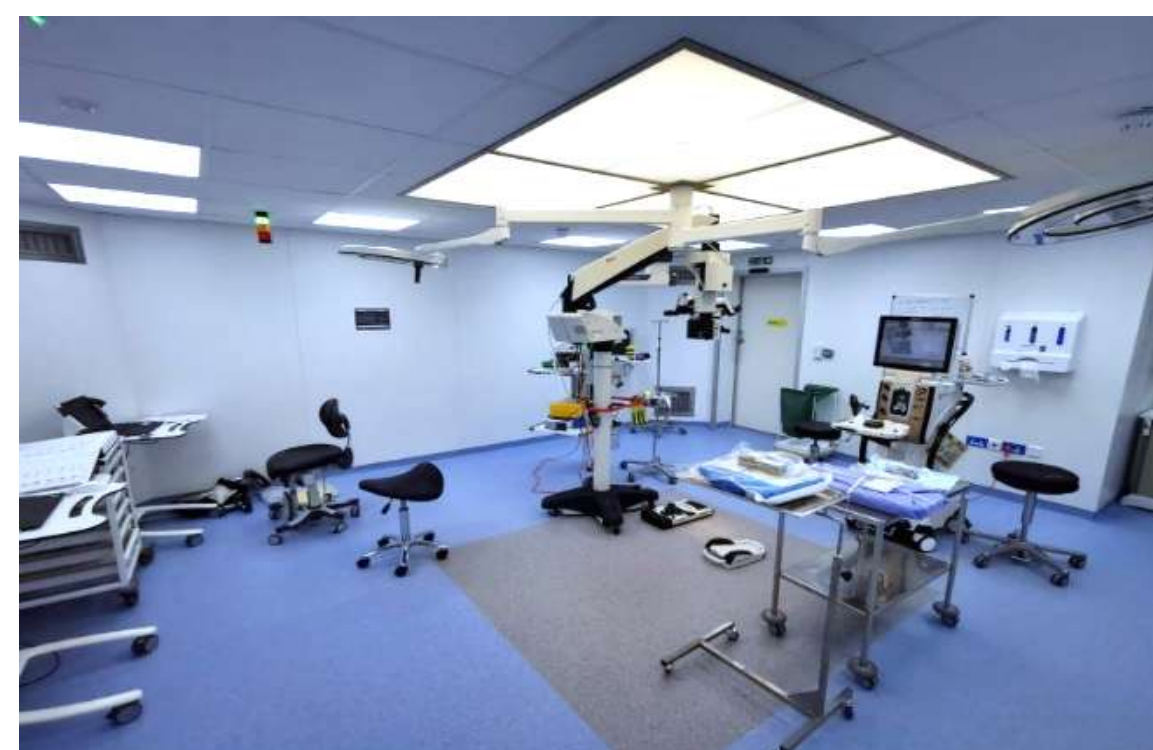
patients treated safe from  
COVID

# 240

m2 overall footprint

# 12

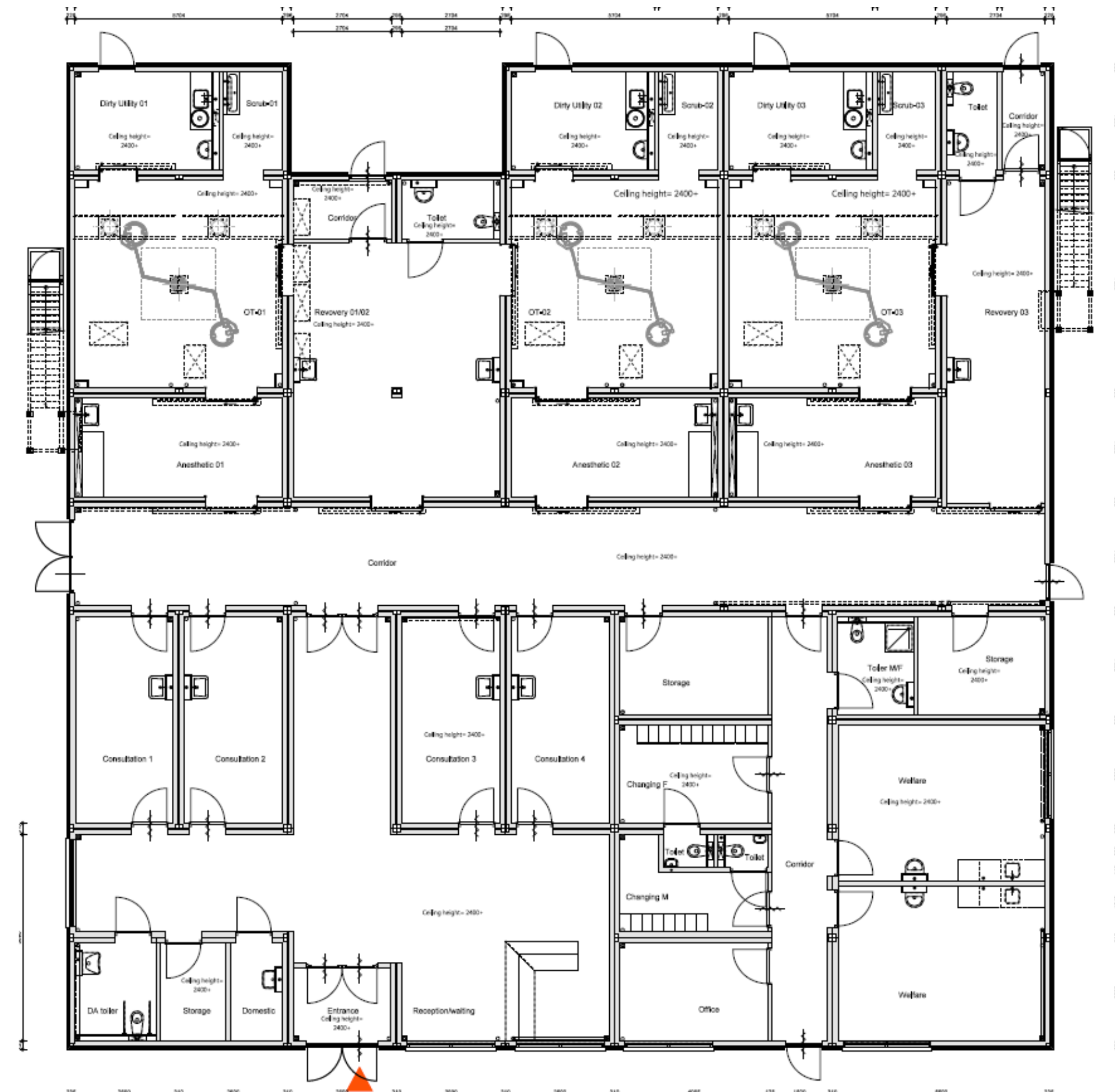
week lead-time after contract  
signature

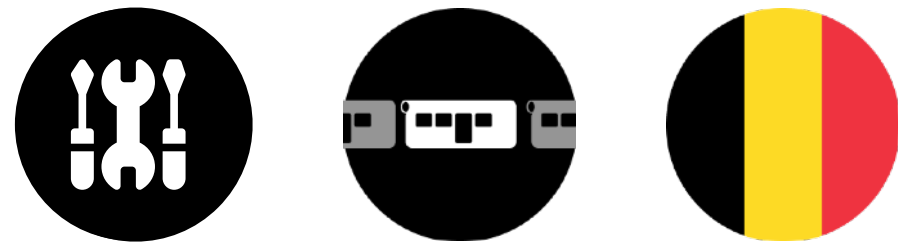






OT complex (3 OT's) with supporting area's





# ST. MAARTEN GENERAL HOSPITAL, DUFFEL

Hybrid operating theatre



5

years on site

90

m2 overall footprint

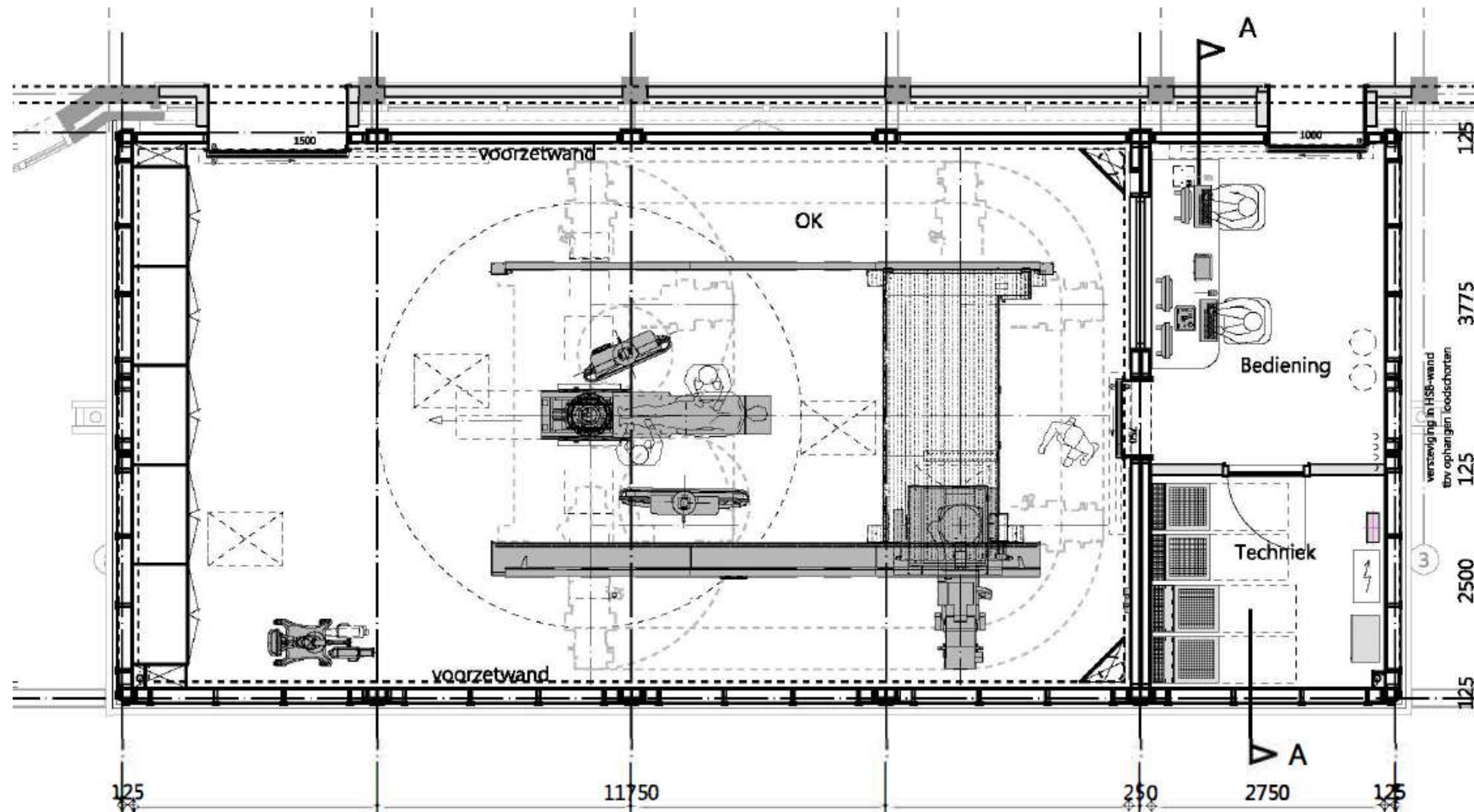
3

months from signature to completion

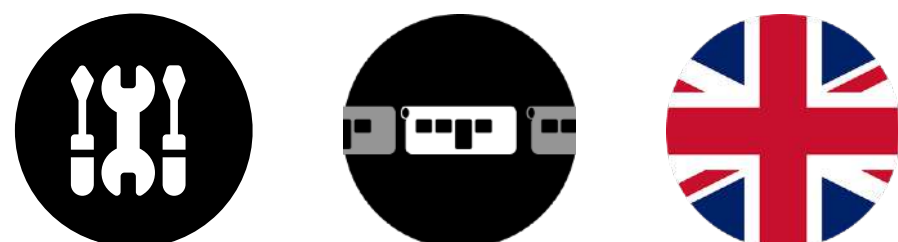




## Hybrid operating theatre







**5000**

COVID delayed treatments

**570**

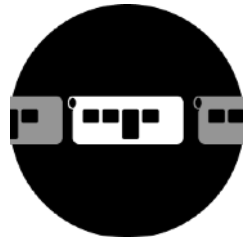
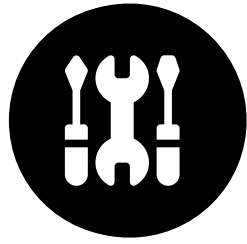
m2 overall footprint

**15**

weeks from signature to  
completion

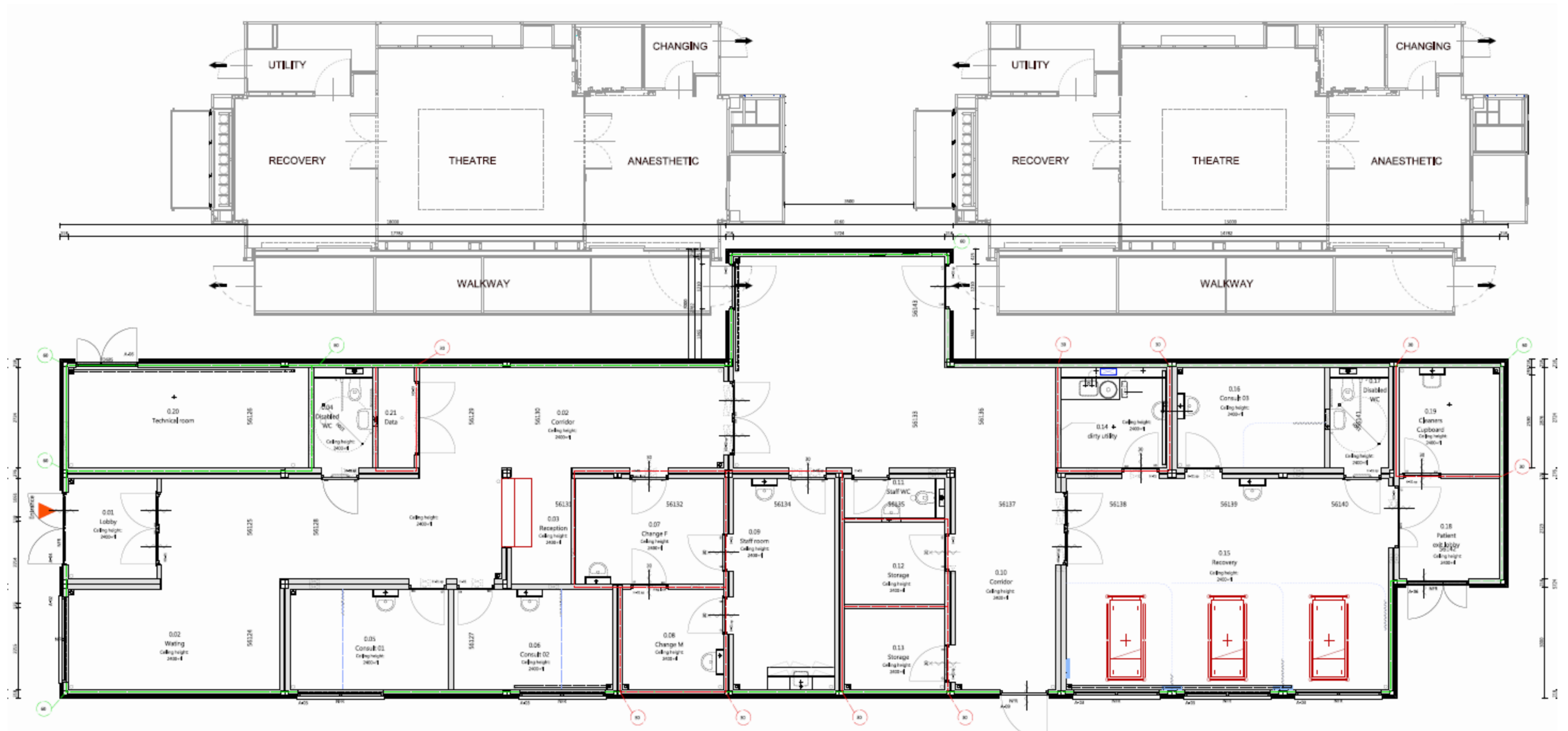




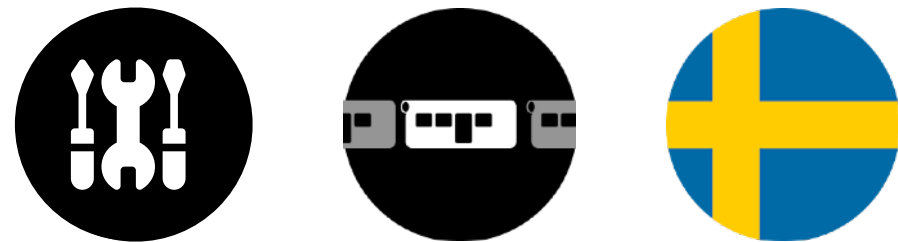


# DERRIFORD HOSPITAL (NHS)

Mixed modality complex







# SKÅNE UNIVERSITY HOSPITAL, MALMÖ

Operating theatres, elevated and attached to the hospital



324

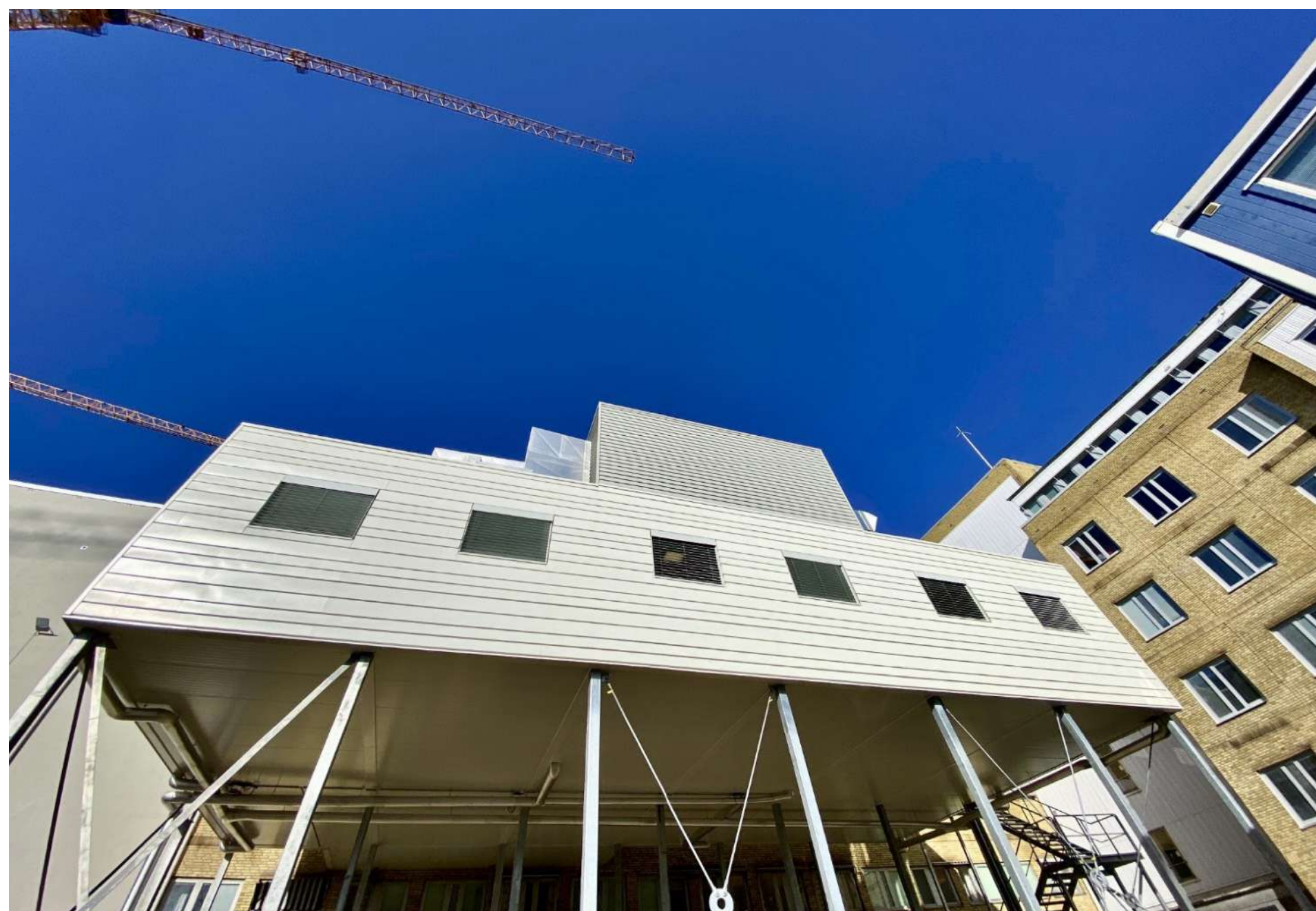
overall added footprint

—

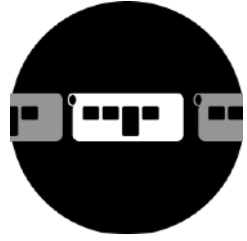
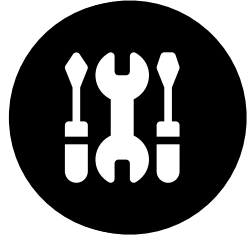
Increased  
capacity and enhanced safety

10

months between initiation  
and full implementation

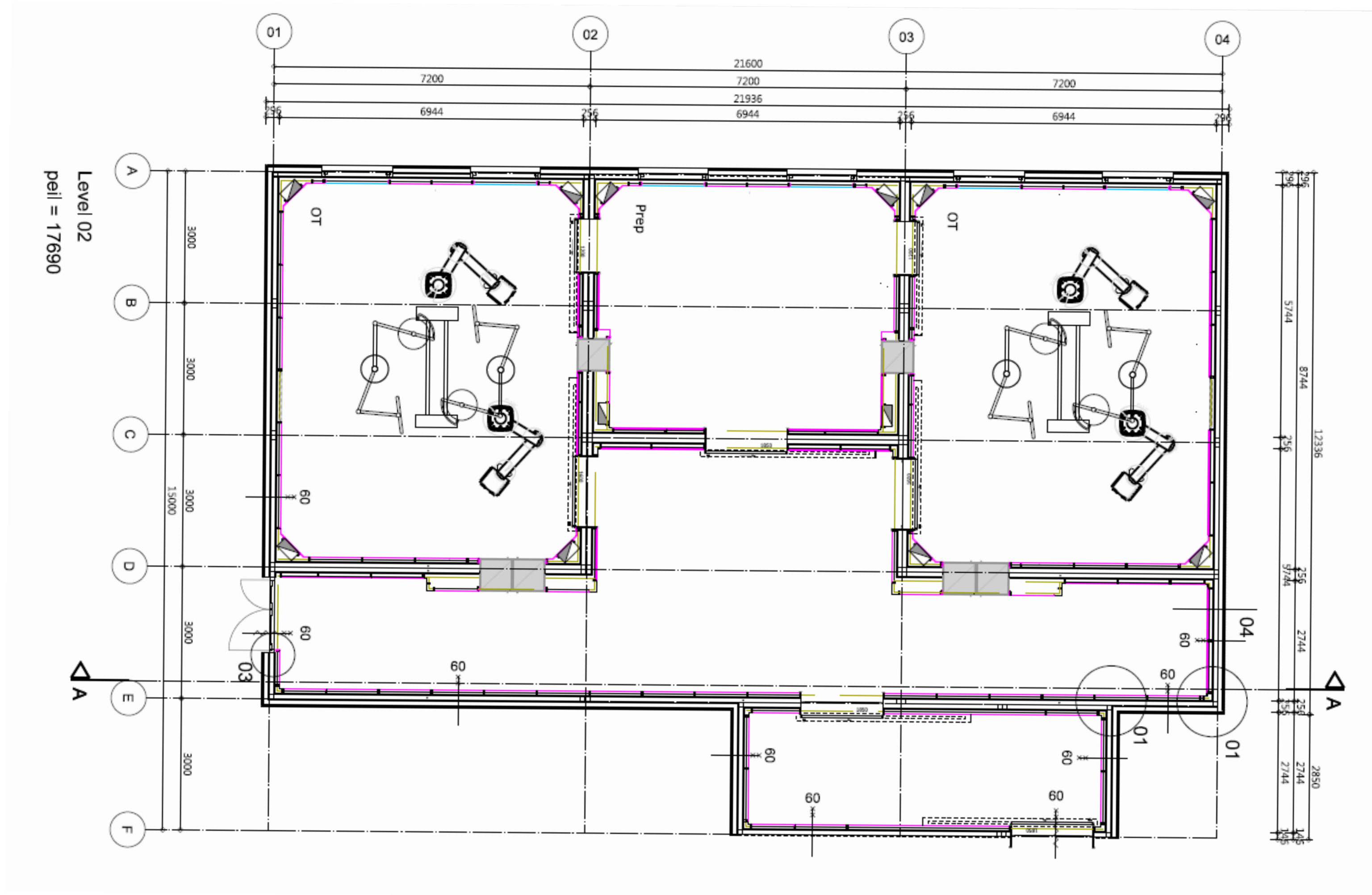




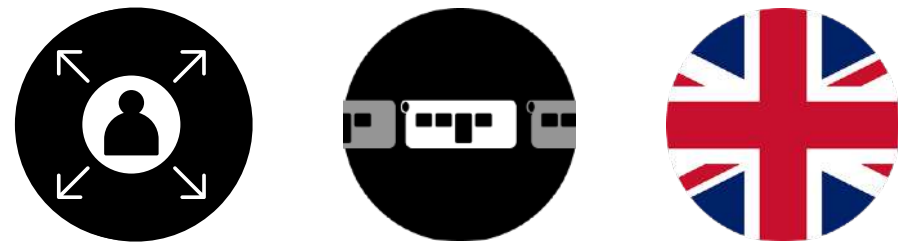


# SKÅNE UNIVERSITY HOSPITAL, MALMÖ

Operating theatres, elevated and attached to the hospital







ST GEORGE'S UNIVERSITY HOSPITAL, LONDON

20 bed ICU



>5000

m2 overall footprint

100%

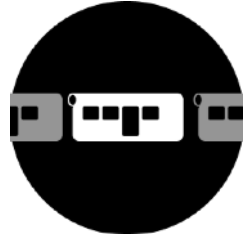
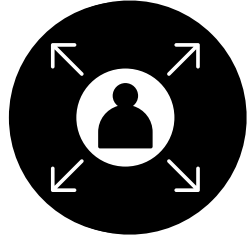
COVID-free  
Intensive Care Unit

26

weeks between signature  
and landing on site





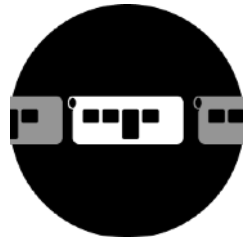
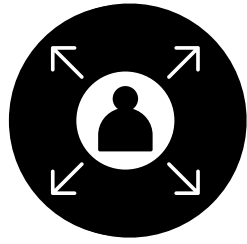


# ST GEORGE'S UNIVERSITY HOSPITAL, LONDON

20 bed ICU





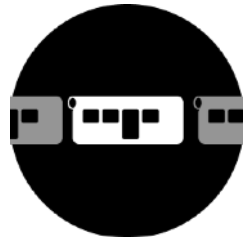
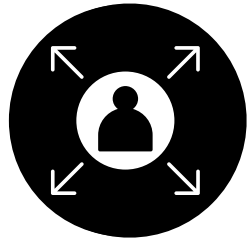


# ST GEORGE'S UNIVERSITY HOSPITAL, LONDON

20 bed ICU







# QUEEN MARY HOSPITAL, ROEHAMPTON

OR department (4 OT's) full clinic



**>1000**

m2 overall footprint

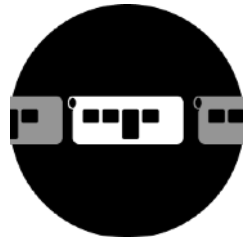
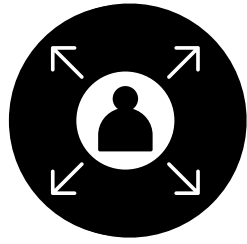
**100%**

Complete and autonomous  
clinic

**>25**

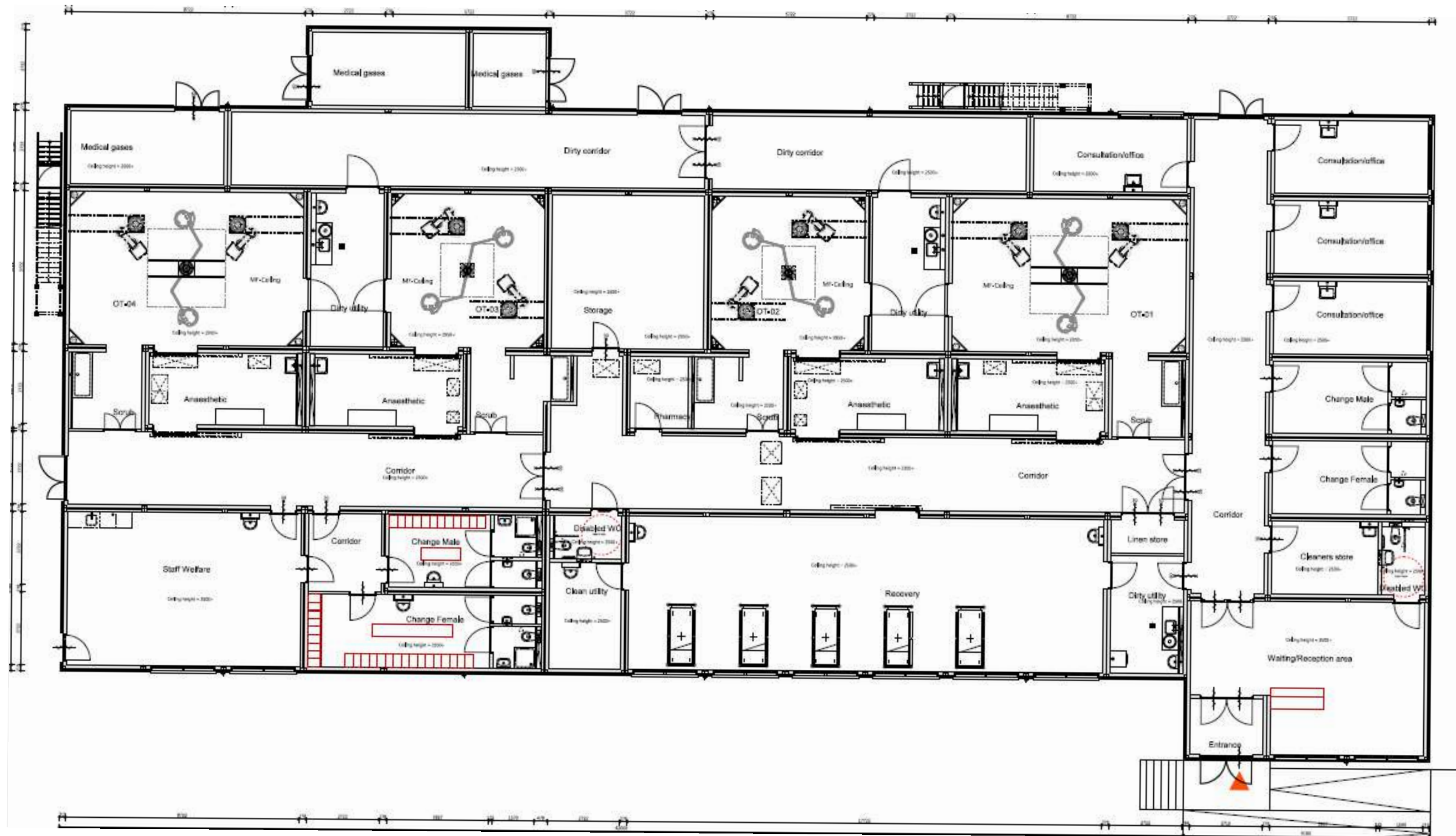
COVID delayed treatments  
will be performed per day





# QUEEN MARY HOSPITAL, ROEHAMPTON

OR department (4 OT's) full clinic





— Mobile

— Modular

**Module**

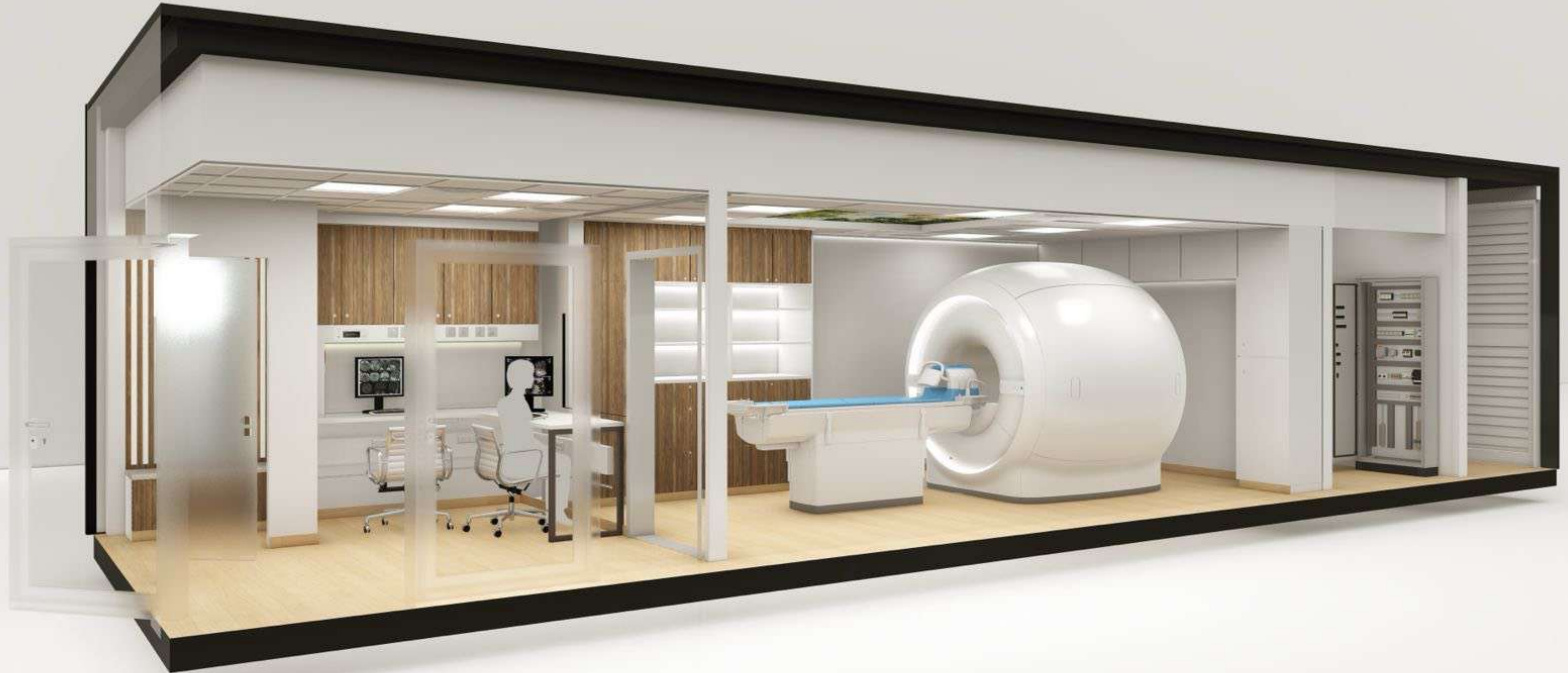


# CT Module





# MRi Module





# Community Diagnostic Center



MRI Relocatable Building



Support Unit



CT Relocatable Building





# Community Diagnostic Center



MRI Relocatable Building



Support Unit



CT Relocatable Building

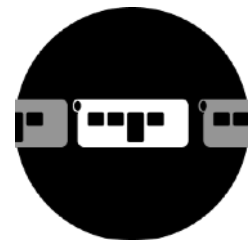
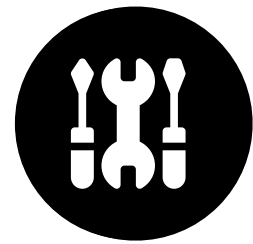




# Aruba Cathlab & CT-scanner







## ARUBA, H. ODUBER HOSPITAL, DUTCH CARIBBEAN

Catheterisation lab facility to be transformed to a CT-scanner  
after catheterisation lab in-house is renovated



5

months from contract  
signature to completion

>75

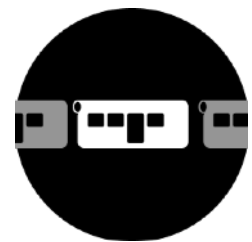
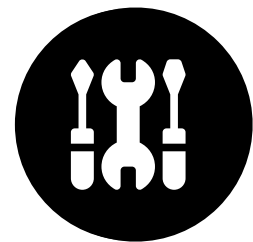
footprint meeting the strictest  
surgical requirements

8

surgical procedures  
performed per day







NETHERLANDS, TRAVELLING

Test laboratory for skin cancer



5

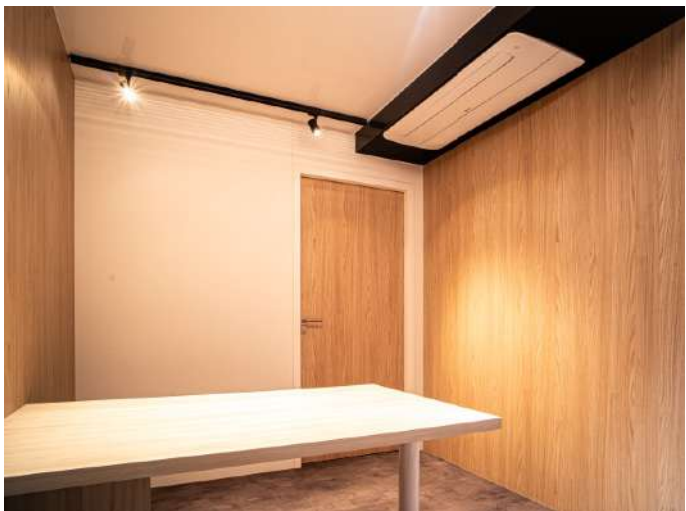
months from contract  
signature to completion

>75

footprint

8

tests performed per day





# Local engineering Services in Ukraine



SET-UP AND MAINTENANCE SERVICES  
WITH **LOCAL UKRAINIAN** COMPANIES

Craning services



Utility services



---

**Engineering services:** site planning, building permit, utilities, licences, clinical physicist, execution of works at site

---

**Training services** for staff and radiologists

---

**Documentation** for general staff in the clinics and communication/information for patients

---

**Maintenance services** for the housing of the scanner performed by a **Ukrainian team** of engineers and local service providers



# Facility solutions in healthcare





# Pitch



In today's society, topics such as circularity and sustainability have become increasingly important. In the healthcare sector, an additional dimension is introduced: the overall well-being of the patient. Hospitals and clinics are increasingly focused on "social return" and "corporate social responsibility."

My name is Rob van Liefland, and I am the founder of MEMO BV. We assist hospitals and clinics worldwide in achieving their operational and clinical capacity goals through our mobile and modular healthcare facility solutions.

Our mission is to provide exceptional clinical infrastructure. We offer a comprehensive range of modular and mobile healthcare facilities, including operating rooms, endoscopy suites, central sterile services departments (CSSD), wards, dialysis centers, and diagnostic departments. Our solutions can be temporary or permanent and are often employed to establish new facilities, maintain services during renovations, and provide rapid responses to emergencies. Our goal is to deliver an integrated solution from concept to deployment.

Our modular facilities are designed with environmental sustainability in mind, and they are also more financially attractive and quicker to deploy than traditional construction methods. We provide flexible solutions suitable for a wide variety of hospitals and institutions, not only during periods of growth and expansion but also in times of crisis when capacity demands shift.

With our specialised team, we bring not only technical knowledge and experience but also clinical expertise to discussions with end-users. We understand what drives our customers and, perhaps more importantly, what holds them back. This understanding allows us to add significant value to healthcare.

[robvanliefland@me.com](mailto:robvanliefland@me.com)

+31 6 5478 5876