



Success Stories
October 2024

Revolt

01

Expertise

Specialized consultancy and development of **innovative solutions** that leverage **Data Analytics** and **Artificial Intelligence** to support its partners in achieving various goals:

- Improve, simplify and streamline processes and services;
- Manage risks and support decision-making processes;
- Identify new market opportunities.

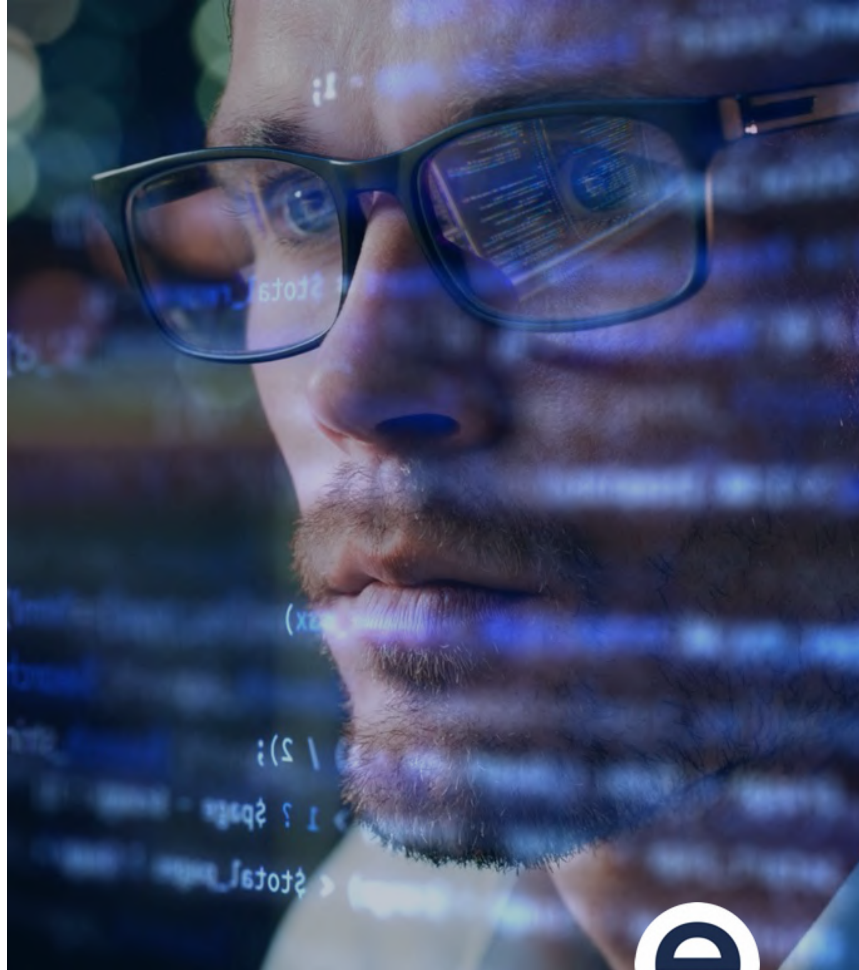
sky

BPER:
Banca



SAIPEM

REPOWER



Solutions



#1

Development of **tailor-made solutions** with integration into **existing business processes** (without any replacement).

Developed **modules interact directly with your data visualization tool** (PowerBI, Splunk, Tableau, etc.)



BI studio

Revolt development framework that allows to manage the entire **end-to-end process**.

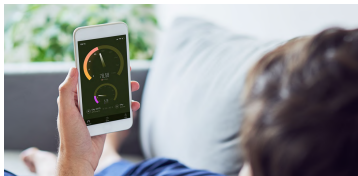
- **100% customizable** product
- 3 main modules – data **integration**, data **analysis** and data **visualization**
- **Cloud solutions** or **on-premise management**

#2

Reference Markets



Banks and Finance Automated processes for central and peripheral banking functions, from macroeconomic and risk scenario analysis to studying the impact and reputation on social channels.



Telecommunications Predictive analysis solutions on service quality and user experience, from churn rate analysis to customer base profiling.



Energy and Utilities Descriptive and predictive analysis solutions in the energy sector, from monitoring energy consumption to designing energy communities and related services for user engagement.

Other Markets Tailored and flexible solutions – entire end-to-end process or integration into existing processes – leveraging data analytics and Artificial Intelligence (Machine Learning, Generative AI, LLM).

Case history

02



BPER:

Banca

Prediction and monitoring of market trends and scenarios

Intercept the evolution of trends by anticipating future market scenarios to deal with the instability of recent years caused by unforeseen social, environmental and economic events

Example visualization of the list of main trends identified in the scientific papers and their classification through P.E.S.T.E. analysis, realized inside the the BPER Banca Blstudio platform.

The screenshot displays the BPER Banca Blstudio platform interface. On the left is a dark teal sidebar with a navigation menu containing: Trends (highlighted in orange), Connections, Report Megatrends, Analysis, Companies, and User Management. At the bottom of the sidebar, it says 'Blstudio v 1.0 credits'. The main content area is light gray and titled 'Trends'. It features a search bar, a menu icon, a notification bell, and a user profile icon labeled 'AD'. Below the title, there are three tabs: 'List' (selected), 'Radar', and 'Matrix'. The 'List' tab shows a grid of six trend cards. Each card has a header with icons, a title, a descriptive paragraph, and a row of five star ratings for different categories.

Trend Title	Impact	Relevance	Innovation	Economics
Energetic peer-to-peer trading Technological progress and the reduction in the costs of renewable and sustainable energies increase the penetration of distributed energy resources (DER) [...]	★★★★☆	★★★★★	★★★★★	★★★★☆
Crisis in multilateral trade agreements The complex set of rules introduced to regulate the trading system risks not producing the expected effects. On one hand, the agreements entered into [...]	★★★★★	★★★★☆	★★★★★	★★★★★
New ontologies in machine learning The development of machine learning is driven by the creation of new ontologies, formal representations of knowledge to enable the classification of [...]	★★★★★	★★★★★	★★★★★	★★★★☆
Economic growth and demographic decline Women's participation in the workforce and attitudes toward female labor have both changed drastically in recent decades. New models show the role of	★★★★★	★★★★★	★★★★★	★★★★★
Charging systems for electric cars The development of electric cars is a fundamental aspect of the ecological transition and, as such, the recipient of growing investments, subsidies, technological developments, and	★★★★★	★★★★★	★★★★★	★★★★★
Technological unemployment The relationship between technological acceleration and structural unemployment is still controversial. Several scenarios are possible: 1. Unplanned job	★★★★★	★★★★★	★★★★★	★★★★★

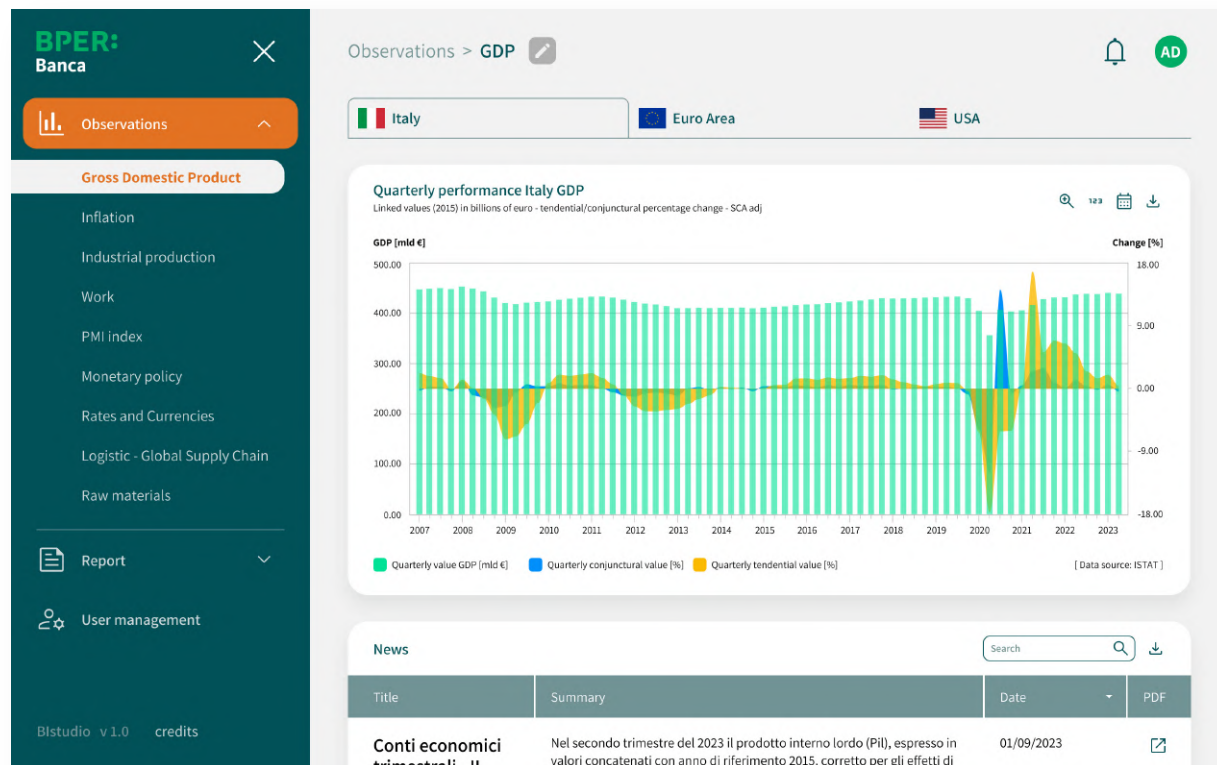
BPER:
Banca

Monitoring and sharing of macroeconomic data

Supporting operators in drafting macroeconomic reports and facilitating the sharing of relevant information with key stakeholders



Example visualization of the centralized database for data exploration and monitoring, realized inside the the BPER Banca Blstudio platform.



BPER:

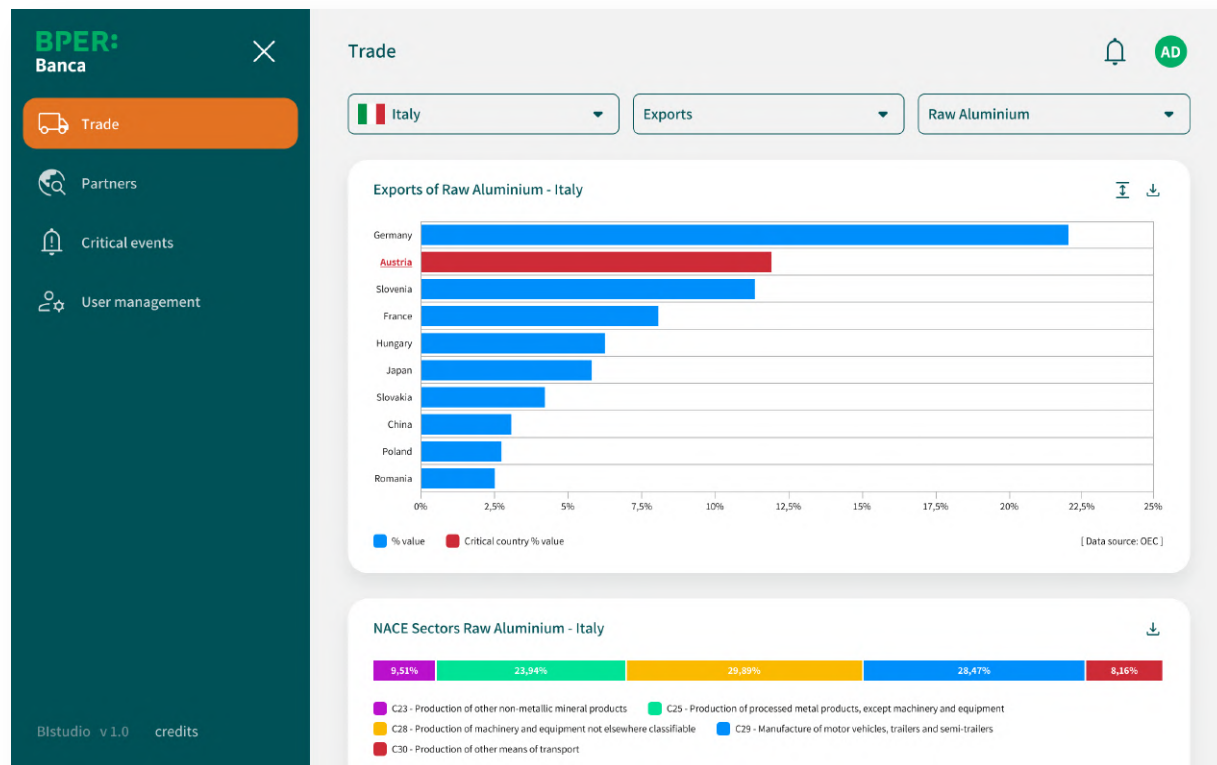
Banca

Prediction and monitoring the effects of critical events

Mitigating credit risks by assessing the impact that potential critical events can have on the supply chain for products and sectors in different countries and markets



Example visualization of the Italy's export data for a specific raw material, with identification of any potential issues,, realized inside the the BPER Banca Blstudio platform.





BPER:

Banca

Monitoring and analysis of brand reputation

Supporting operators in the analysis of user reviews on social media
with the aim of improving the bank's positioning in the territory

Example visualization of the list of Google My Business user reviews and their categorization, realized inside the the BPER Banca Blstudio platform.

BPER Banca

×

Statistics

Reviews

Offices

User management

Blstudio v 1.0 credits

Reviews

30/08/2023 15:49:39

1/2

⚠

📍 Piazza Libertà - Travagliato, Lombardia

Purtroppo non si può mettere zero stelle, anche se si meritano sottozero. Per non parlare poi delle carte di credito, non risponde mai nessuno. Si può morire. [...]

Bad product-service

Unable to contact

Bank products

Incorporations

29/08/2023 06:49:39

1/2

📍 Via Roma, 15 - San Ferdinando Di Puglia, Puglia

Filiale a dir poco scandalosa, degna del peggior (o miglior) film di Cecco Zalone! Casse aperte solo la mattina con orario 08:30 - 13:00, almeno sulla tabella! L'impiegato arriva alle [...]

Bad product-service

Long time

Bank Employees

28/05/2023 16:03:14

1/1

⚠

📍 Via Dante, 5 - Manerbio, Lombardia

Il direttore M***** B***** scandaloso. Dopo mesi e mesi dell'attesa per la delibera del mutuo per l'acquisto prima casa il direttore risponde solo perché gli ho [...]

Bad product-service

Bank Employees

Unable to contact

Bank products

11/03/2023 8:06:44

2/2

📍 Via Riva Di Reno, 47 - Bologna, Emilia Romagna

Meglio starne alla larga!

Generic

02/02/2023 8:08:52

1/2

📍 Piazza 27 Ottobre, 39 - Venezia, Veneto

pessimo servizio, gente maleducata sia al telefono che di persona

Bad product-service

24/01/2023 18:22:45

3/3

⚠

📍 Via Xxi Aprile 1945, 31 A - Bologna, Emilia Romagna

Normale

Generic

A person is lying down, holding a smartphone. The phone screen shows a service quality assessment app with two gauges. The top gauge has a needle pointing to 78.58 and a scale from 0 to 100. The bottom gauge has a needle pointing to 5.78 and a scale from 0 to 10. The app also shows 'Sky WiFi' and 'Sky' logos. The background is a blurred image of a person lying down.

sky

Service Quality Assessment

Evaluate the customer's perceived quality during the usage of the Sky WiFi service



Service Quality Assessment

Data Integration

Automated data ingestion of **more than 500k customers** from various sources: CPE, Service and Massive Service Outage Data.

Data Analysis

- **Key Performance Indicators (KPIs)** for evaluating perceived quality and responsiveness to service issues from the customer's perspective;
- **Artificial Intelligence system** for monitoring and report creation;
- **Personas creation** based on usage and actions of customers.

Data Visualization

Automated production of **daily results, sent to the customer's visualization system** (Splunk) and creation of **dashboards** and logics.



A background image showing a group of football fans celebrating. In the foreground, a man in a red Arsenal jersey is hugging a woman with curly hair, also in a red Arsenal jersey. They are both cheering with their fists raised. To the left, another fan in a red and white jersey is visible. In the background, a large television screen displays a football match in progress. The entire scene is overlaid with a semi-transparent dark blue filter.

sky

Estimation of streaming event audience

Estimate the number of customers using Sky Wifi to stream sports events



sky

Estimation of streaming event audience

Data Integration

Automated data ingestion from **various sources**: CPE and devices data, Sport event details.

Data Analysis

- **Artificial Intelligence-based solution** to estimate the total number of viewers;
- Computation of the probability for **each single device** to **watch the streaming event**.

Data Visualization

Automated production of **daily results**, **sent to the customer's visualization system** (Splunk) and creation of **dashboards** and logics.



A couple is seen from behind, sitting on a couch in a living room. They are watching a television that displays a blue-toned image. The man on the right is holding a remote control. The entire scene is overlaid with a semi-transparent blue filter. In the top left, there is a white square containing the 'sky' logo. To the right of the logo, the title 'Analysis and Prediction of Churn Rate' is written in large white font. Below the title, a subtitle in smaller white font reads 'Avoid the abandonment of Sky WiFi service by customers experiencing technical issues'.

sky

Analysis and Prediction of Churn Rate

Avoid the abandonment of Sky WiFi service by customers experiencing technical issues



sky

Analysis and Prediction of Churn Rate

Data Integration

Automated data ingestion of **more than 700k customers** from various sources: CPE, Service and Massive Service Outage Data.

Data Analysis

- **Explainable Artificial Intelligence (xAI) indicator** for the dual purpose of predicting customer churn probability for technical reasons while providing an elucidation of the underlying causal factors;
- **Customer segmentation** based on usage habits.

Data Visualization

Automated production of **daily results, sent to the customer's visualization system** (Splunk) and creation of **dashboards** and logics.





sky

Personas Creation for Customer Base Segmentation

Personalizing service, offers, customer experiences based on personas,
starting from available data



Personas Creation for Customer Base Segmentation

Data Integration

Automated data ingestion from various sources: quarter-hour router and devices traffic and technical data from more than **700k customers** and **6 million devices**.

Data Analysis

- Target identification through **exploratory statistical analysis** of the dataset and sector-specific experience.
- Identification of relevant **variables for target characterization**.
- Evaluation of **significant correlations** among considered targets and clustering.
- Creation of personas from the targets.

Data Visualization

Automated production of **daily results, sent to the customer's visualization system** (Splunk) and creation of **dashboards** and logics.



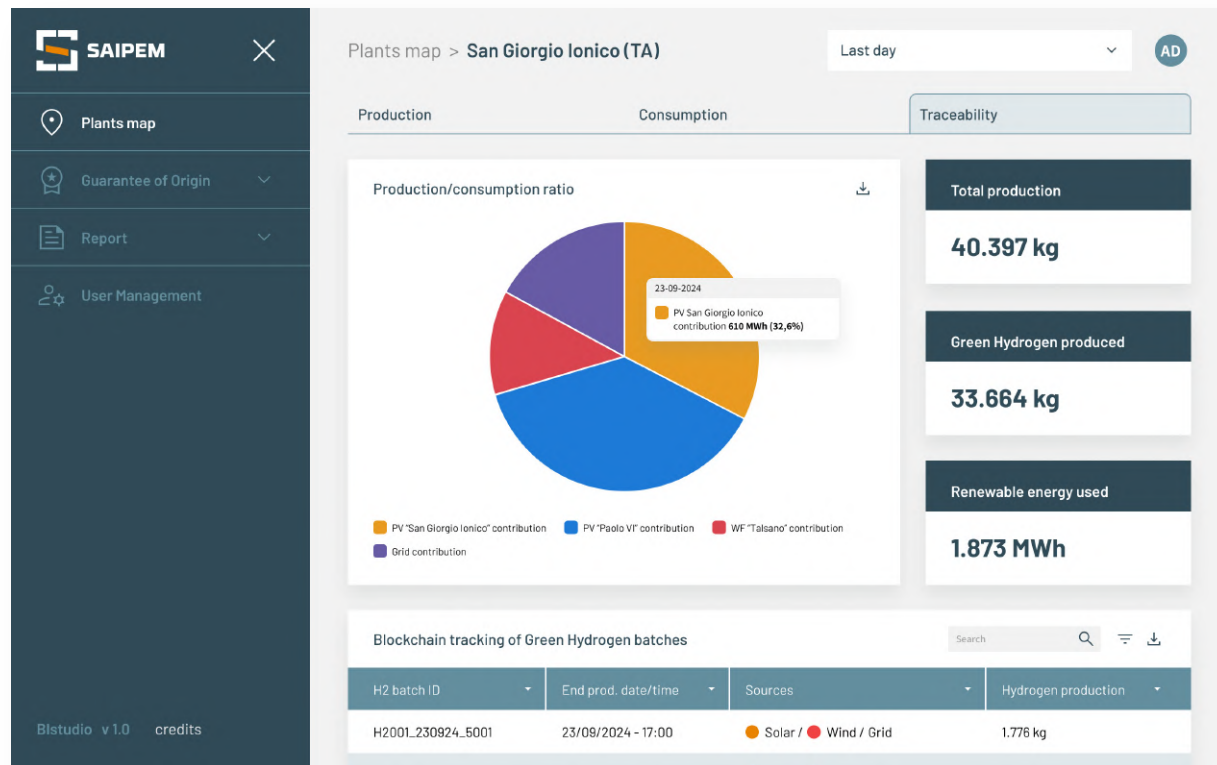


SAIPEM

Monitoring the Green Hydrogen supply chain

Supporting the decarbonization of industrial processes by tracking batches of Green Hydrogen, produced with the contribution of renewable sources, through Guarantee of Origin (GO) and Blockchain technology.

Example visualization of the Green Hydrogen traceability and renewable energy contribution, realized inside the Saipem Blstudio platform.



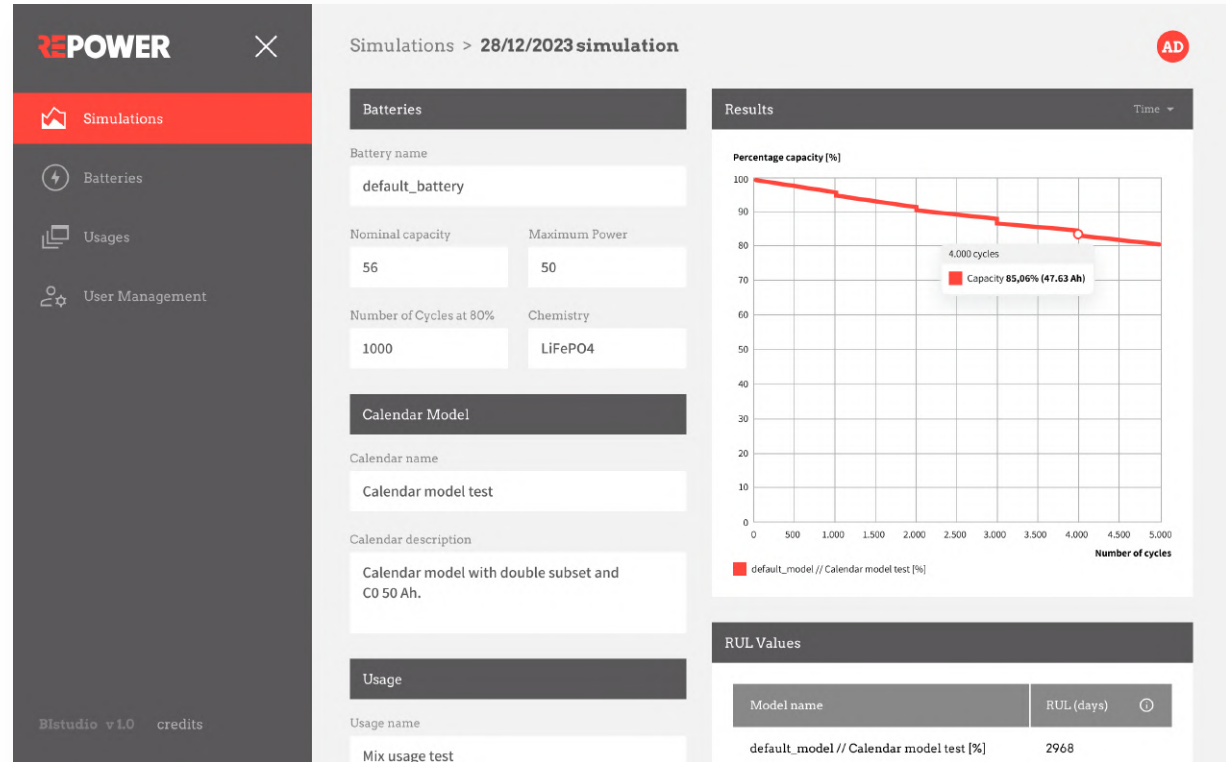


REPOWER

Battery health assessment

Avoid significant time and money losses that occur during the execution of battery health assessment tests

Example visualization of a simulation for the prediction of the degradation of the SOH of a battery, realized inside the Repower Blstudio interactive web platform.

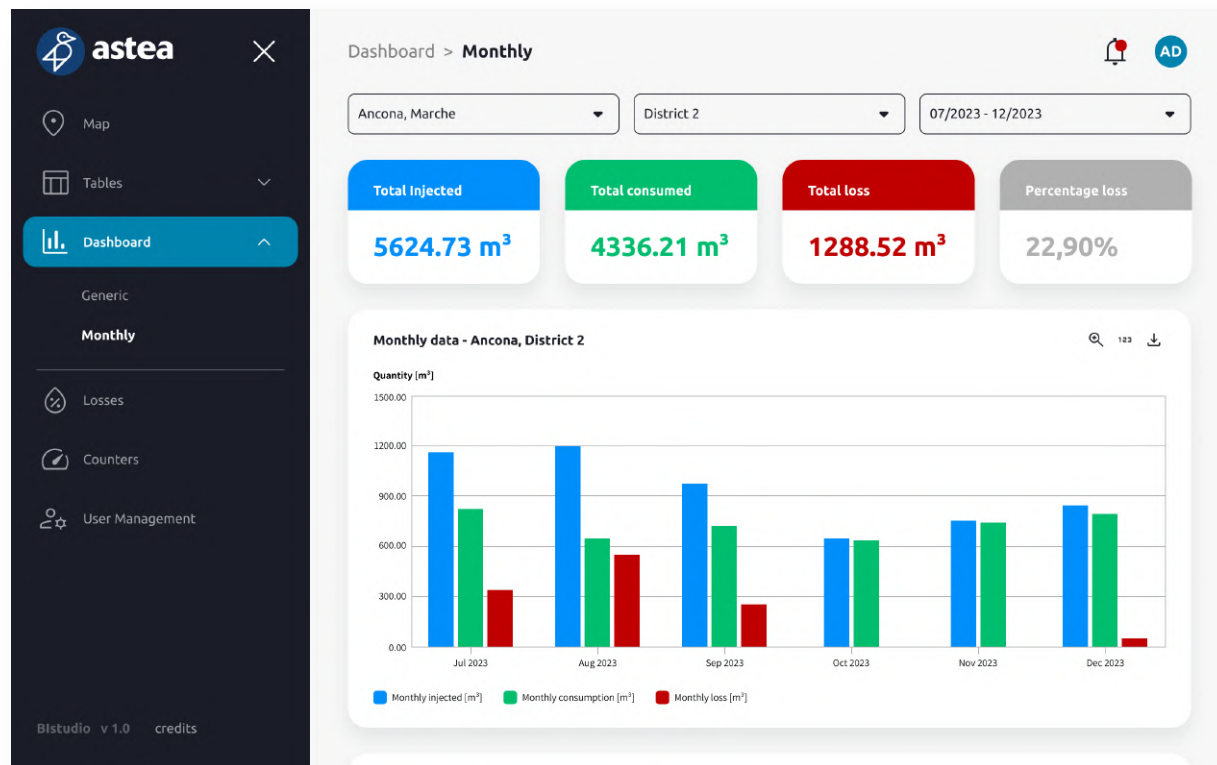




Monitoring of water losses in urban networks

Quickly discover, quantify and visualize water losses data and reduce the creation time and the readability of the periodic reports

Example visualization of a dashboard with KPIs for monthly water consumption in a specific district, realized inside the Astea Blstudio interactive web platform.





revolt

data revolution

Info e contacts:

antonio.giovannelli@revoltsrl.com

+39 351 3408560

lucio.ciabattoni@revoltsrl.com

+39 392 2891633

Via Sandro Totti 11
60131 Ancona – Italy
Tel. +39 071 9300211

info@revoltsrl.com

www.revoltsrl.com