



CoreMineTM
VITAE

AI-Enabled Analytics & Decision Support for Personalised Medicine

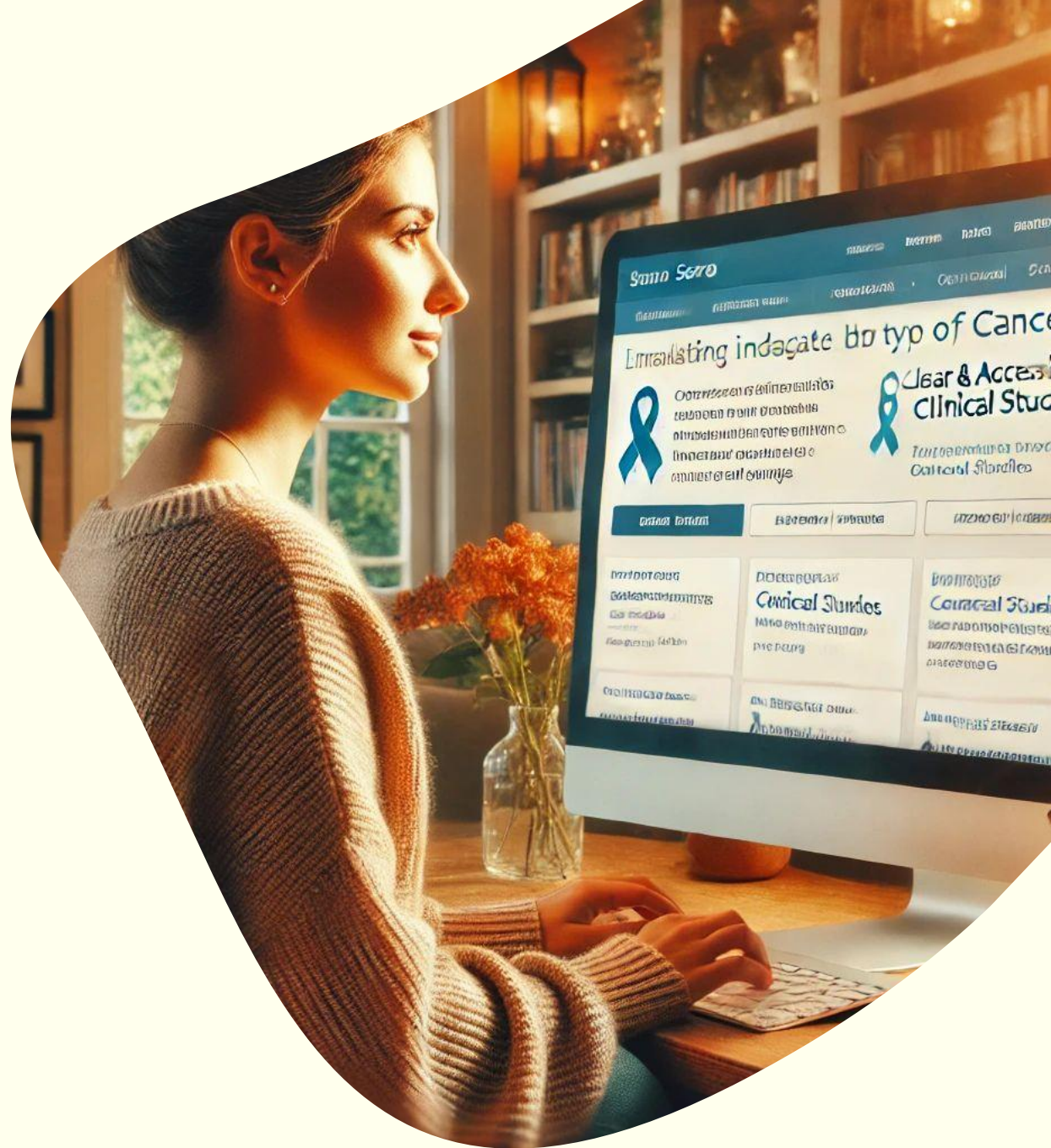
Maria Mastrangelopoulou, MSc, PhD, CSO
Coremine Vitae AS, SME, private organization
Norway

maria@coreminevitae.com
www.coreminevitae.com

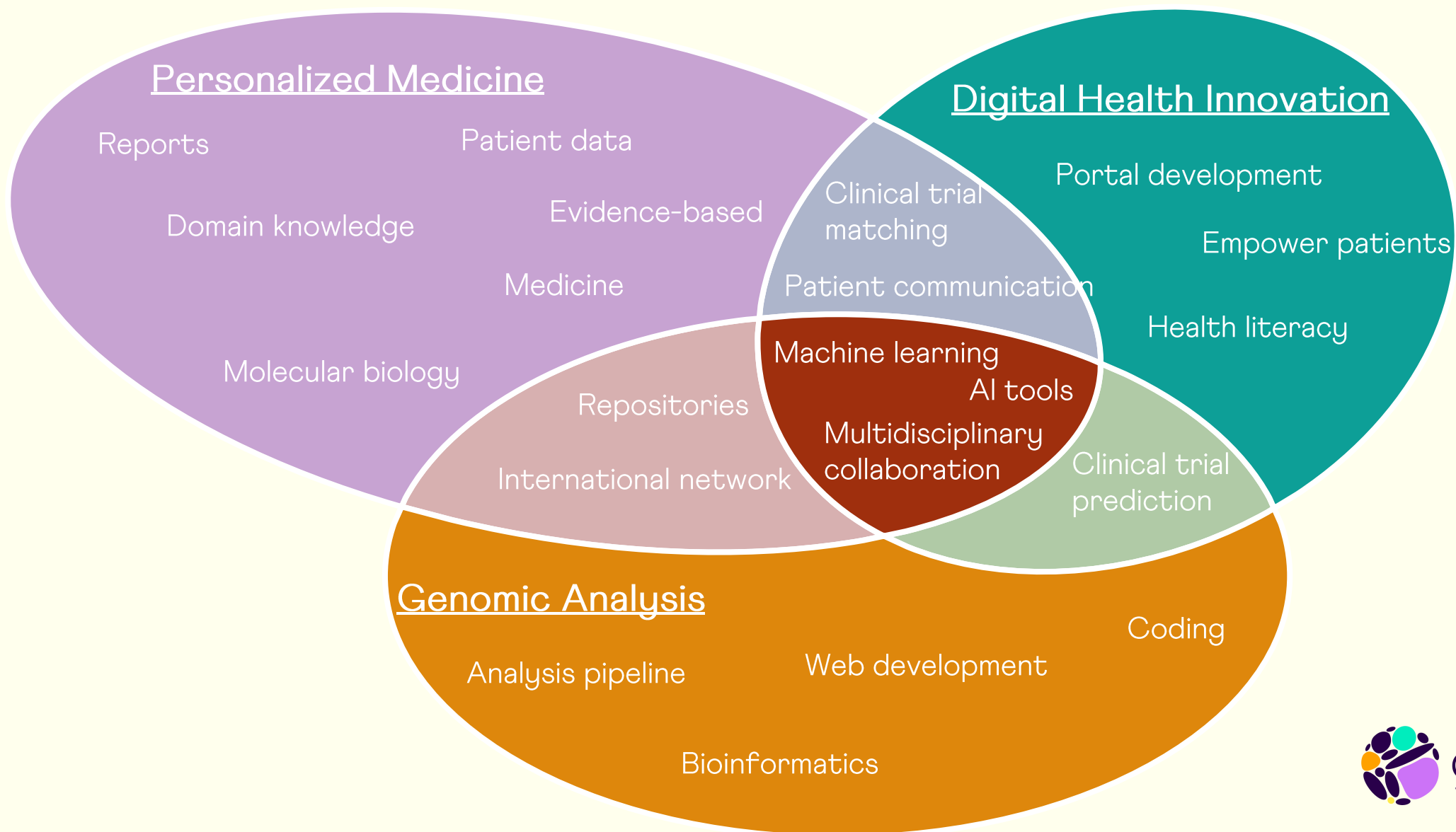


Norwegian SME specialising in explainable AI and biomedical data integration for personalised/precision medicine.

Our mission is to bridge the gap between research evidence, complex health data, and real-world clinical and R&D decision-making.



Core Competencies and Expertise in Coremine Vitae



What we do:

- ✓ **Precision medicine evidence structuring & synthesis**
 - Turning complex biomedical evidence into clear, usable insights
- ✓ **Bioinformatics & explainable AI analytics**
 - Working with multi-omics, biomarkers, and interpretable models
- ✓ **Clinical research & data integration tools**
 - Connecting literature, molecular data, and clinical context in one workflow
- ✓ **Decision-support & evidence-based outputs**
 - Supporting treatment and R&D decisions with traceable evidence



Projects and EU Experience

Selected Eurostars & RCN/EU projects

- Pathobody-proteogenomic antibody pipeline
- ANTISepctic-mass spec detection of sepsis
- Precision Cancer Medicine Services-personalized oncology
- Glioma Strategies-bioinformatics & phosphoproteomics
- GenomeMiner-personalised oncology software



Why this matters

- Strong experience combining AI+biology+translational workflows
- Long history integrating computational prediction with clinical/experimental evidence

What Makes us Different

1. Trustworthy, explainable AI

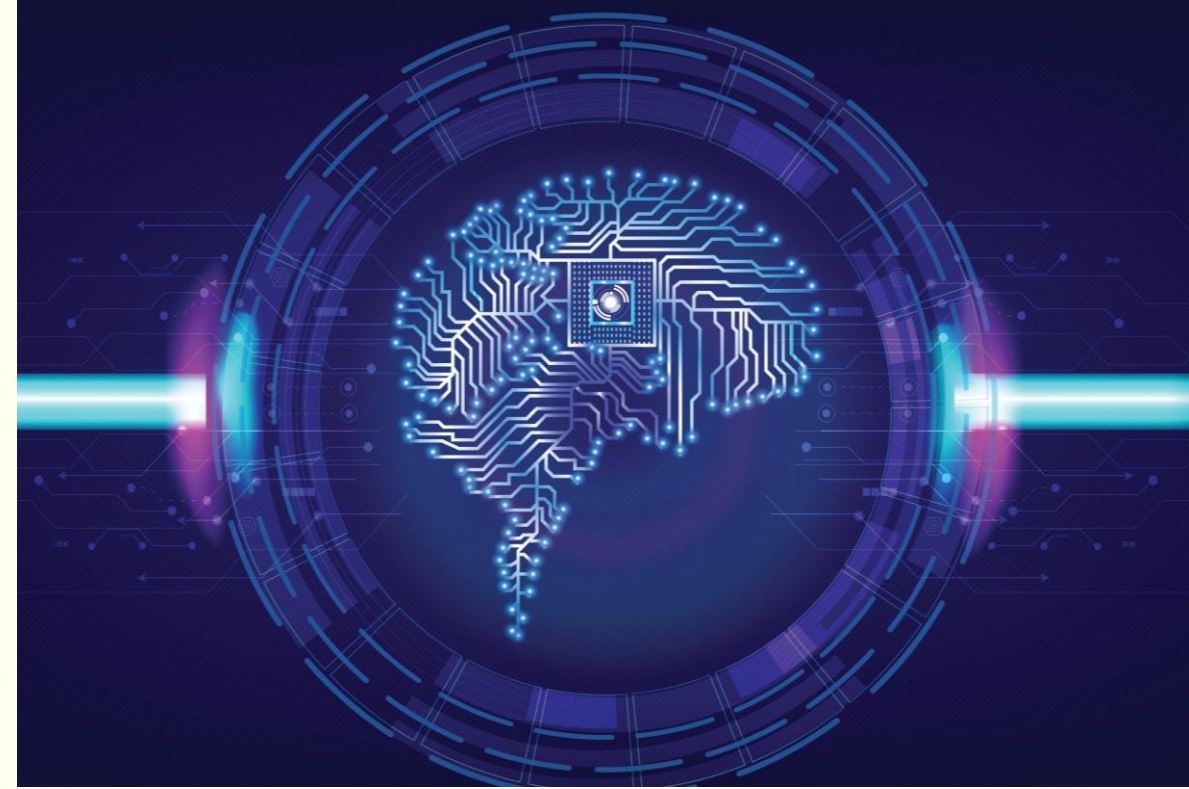
- Interpretable predictions (e.g., SHAP)
- Transparent and traceable

2. Integrated & practical

- One workflow linking biomarkers/multi-omics, clinical context, and literature evidence
- Built as reproducible, decision-ready outputs for clinical and R&D use

3. Precision medicine expertise

- 200+ personalised reports delivered
- Proven ability to translate complex data into actionable clinical insights



4. Scalable architecture

- Easily adaptable across disease areas (incl. cardiovascular, metabolic, and kidney)
- Extendable to new biomarkers, datasets, and cohorts



CoreMineTM
VITAE

Thank you for your attention!

Maria Mastrangelopoulou, MSc, PhD, CSO
Coremine Vitae AS, SME, private organization
Norway

maria@coreminevitae.com
www.coreminevitae.com