

**Tailor.**

**wizh.it**  
— PRIVATE AI —

**Your AI.  
Your Data.  
Your Control.**



# THE CHALLENGE:

Over 38% of employees share sensitive company data with online AI tools without proper authorization—exposing critical business information to external risks!

(Infosecurity Magazine, Sept 2024)

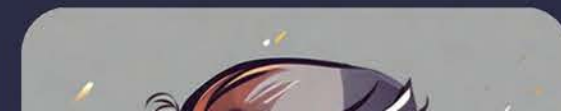




# THE SOLUTION.

## Your Private **AI** employees.

- Powerful, customizable **AI** assistants that run entirely on-premise.
- No data sharing with external parties.
- Carefully matching your specific business needs.





# Tailor: Secure, On-Premise Private AI.

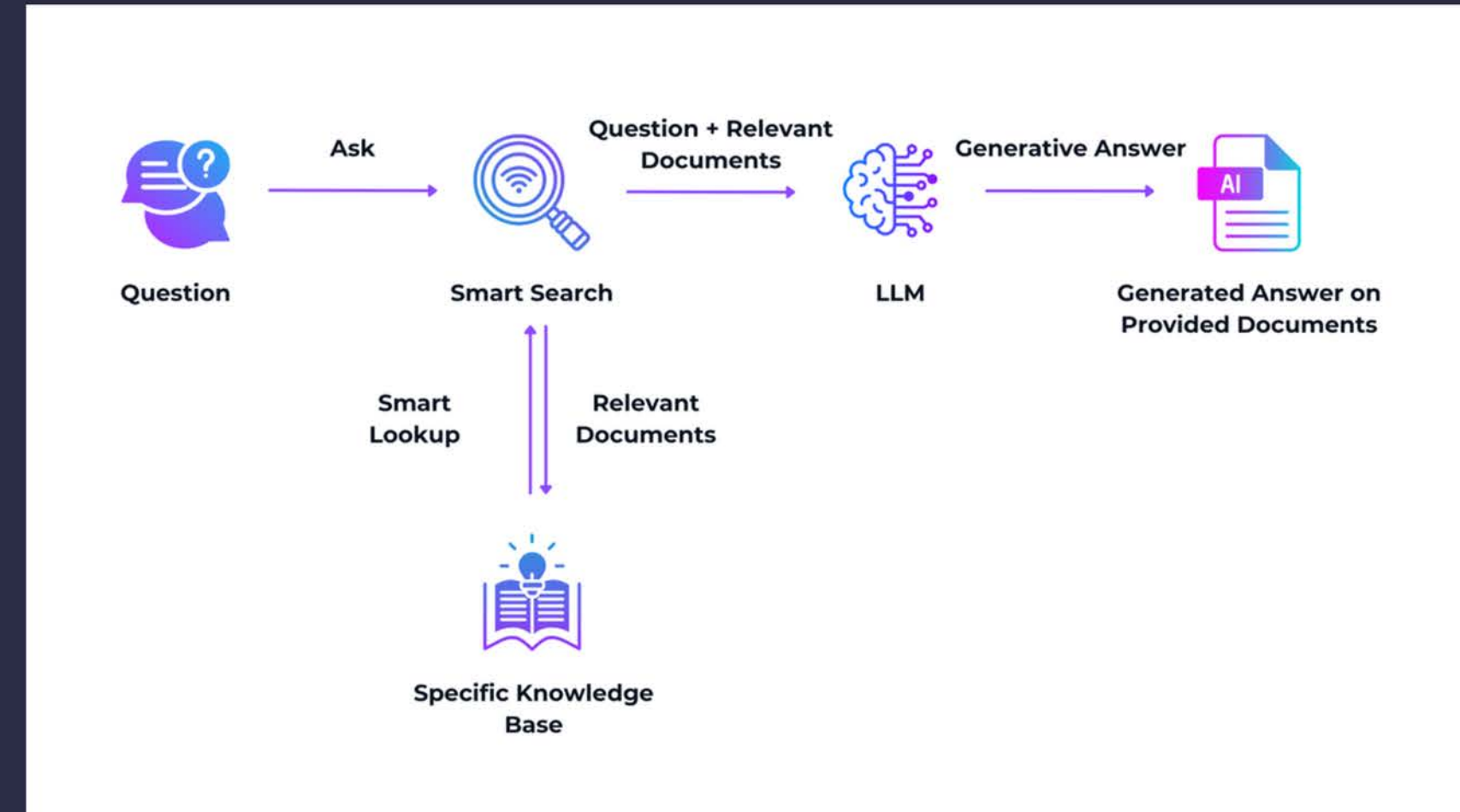
Tailor is an enterprise-grade AI that redefines security and increases efficiency. Enjoy lightning-fast, customizable virtual assistants that keep your data in-house, empowering your teams with smart insights and powerful automation tools.



# Retrieval-Augmented Generation.

## What is RAG?

RAG stands for Retrieval-Augmented Generation. It enhances AI by retrieving real-time, relevant data from trusted sources, ensuring precise and context-aware responses without relying solely on pre-trained competence.



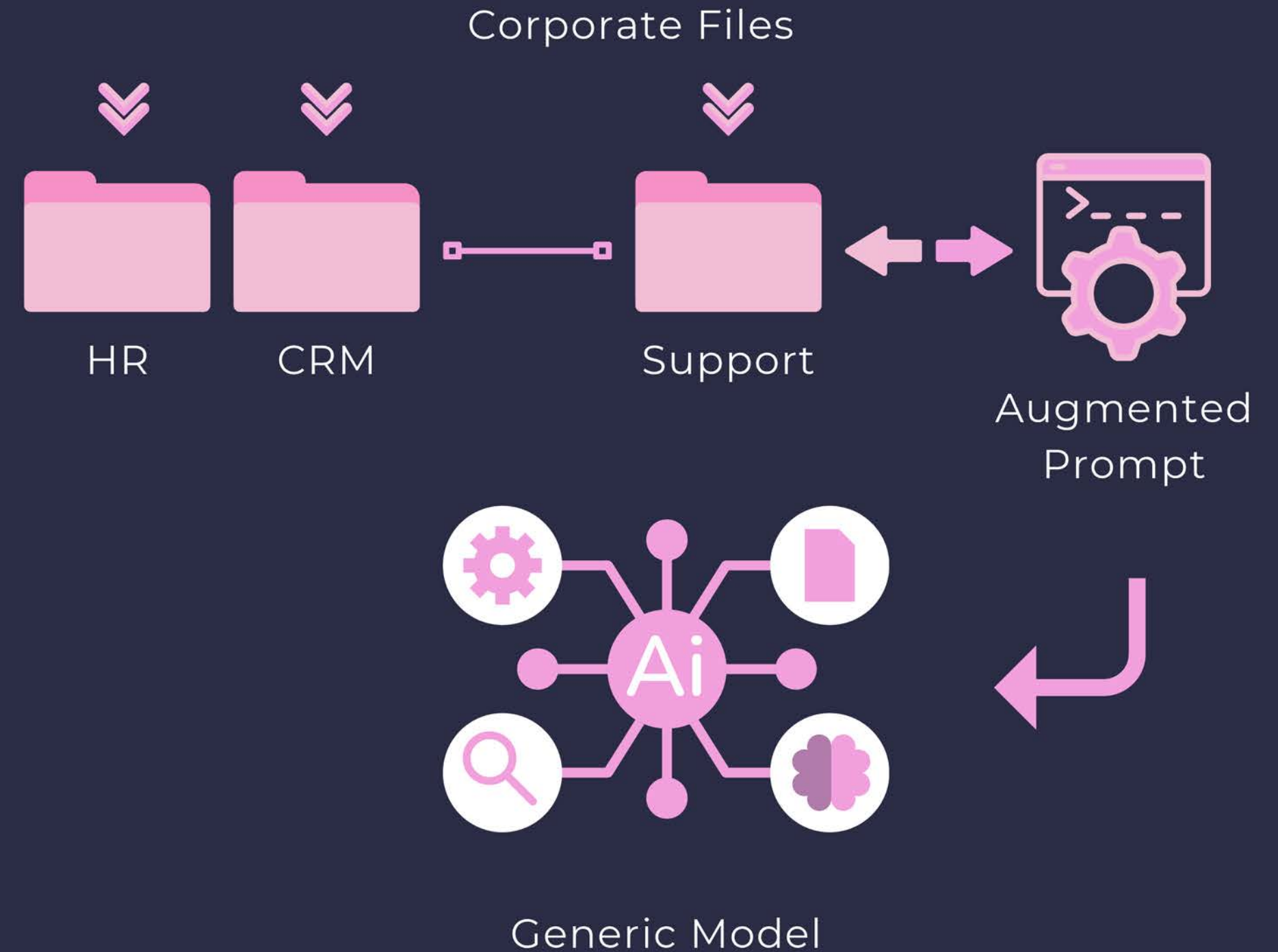


# Private-AI Training – How does it Works?

- Create repositories with Company Know-How content.
- Private-AI-engine processes it, allowing Model Interaction.
- Users interacts with the Private-AI powered-by your specific knowledge.
- Private-AI provide answers based on factual evidence from Private competence.

Nothing leaves your Datacenter

Works with any model and is not lost with Model updates



# MULTIPLE SPECIALIZED MODELS.

Leverage the power of domain-specific pretrained open models:  
Over 1M pretrained models available!



**Legal**



**Compliance**



**HR**



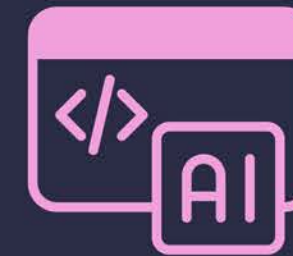
**Procurement**



Context Specific Question  
Answer, Text Generation



Specialized in Translation



Multiple Programming  
Languages



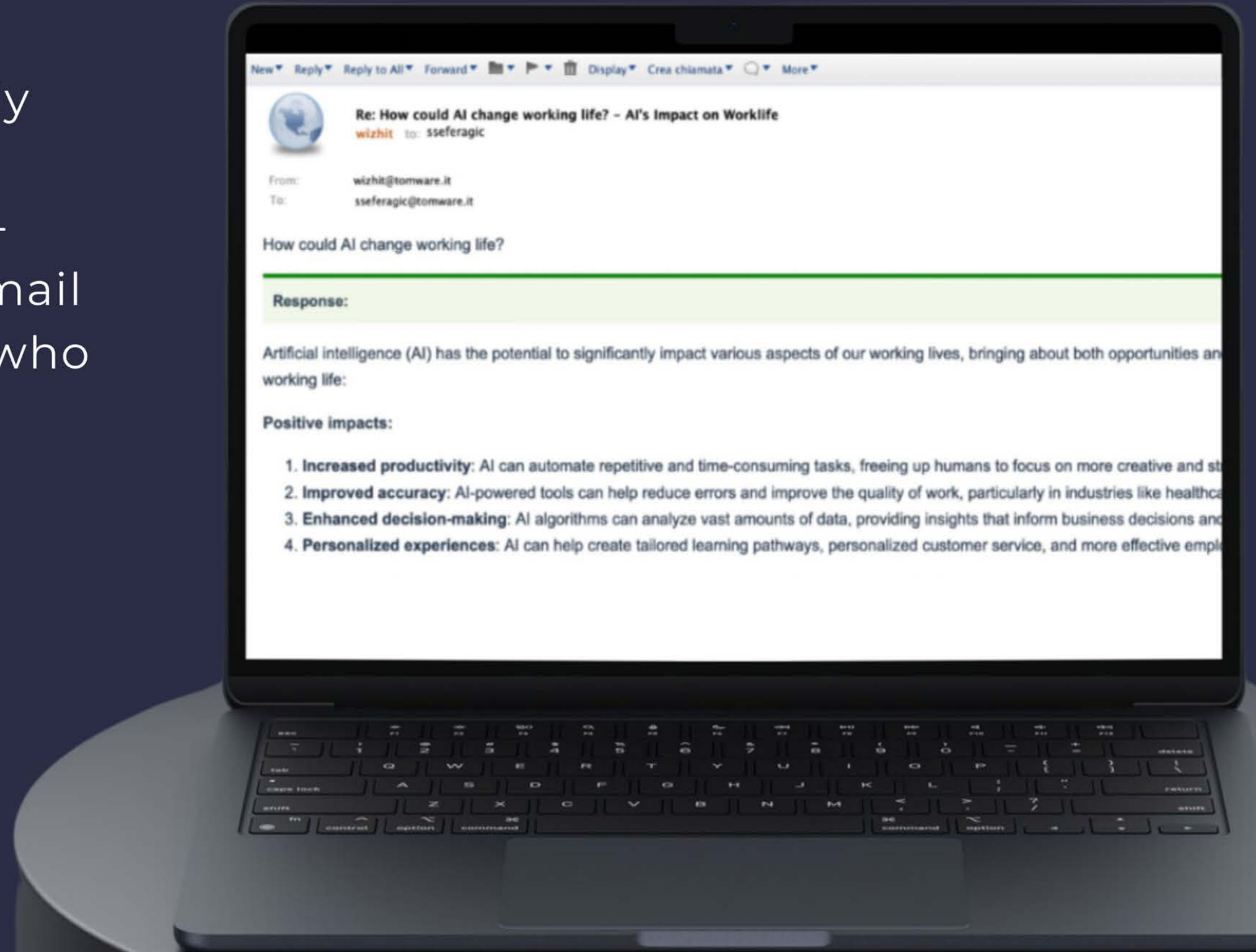
Frames/Images Analysis\*

\*Discerning image patterns to  
support decision making in multiple  
industry scenarios.



# Tailor Email Interface.

Tailor Email Assistants seamlessly integrate into your enterprise, **enhancing productivity** with AI-powered email management. Email interface is ideal for executives, who need to **manage many tasks asynchronously**.





# Licences.

## Tailor Prem Light

Up to **2Tb** of raw storage  
Max 50 users (including v.a.)  
Up to 2x48Gb GPU positioned  
in one or two front-end hosts

## Tailor Prem Silver

Up to **10Tb** of raw storage  
Unlimited Users  
Up to 2x48Gb GPU positioned  
in one or two front-end hosts

## Tailor Prem Gold

Up to **100Tb** of raw storage  
Unlimited Users  
\*Up to 2x48Gb GPU positioned  
in one or two front-end hosts

\*Each increase of 48Gb Vram will require 5% of costs increase in Application, Maintenance and Configuration



# TAILOR PREM LIGHT - MAX 2 TB

## APPLICATION

**Actual version: 1.16**

**Lifetime License**

- **Including:** User Manager Console, Virtual Assistant Manager Console, Rag Datas Manager Console, Pretrained Model Certification (Max 10)
- **Future Features:** Agentic Feature, MagicDoc, Knowledge Transformers

## CONFIGURATION

**Remote Configuration  
Package  
(inside certified  
environment through  
VPN connection)**

## MAINTENANCE 1/Y

- **Software Maintenance**  
(including fix delivery and minor updates)
- **Application Support**  
(including Lev.2 and Lev.3 with NBD approach)
- **New Package** (Pretrained Models Update) & Mayor Version Release
- **4h. Assistance:** +50% on the application support fees
- **365x24x4h Assistance:** +100% on the application support fees for the 4h assistance rate

## EDUCATION

**2,5 days Support and  
Education**



# TAILOR PREM SILVER - MAX 10 TB

## APPLICATION

**Actual version: 1.16**

**Lifetime License**

- **Including:** User Manager Console, Virtual Assistant Manager Console, Rag Datas Manager Console, Pretrained Model Certification (Max 10)
- **Future Features:** Agentic Feature, MagicDoc, Knowledge Transformers

## CONFIGURATION

**Remote Configuration  
Package  
(inside certified  
environment through  
VPN connection)**

## MAINTENANCE 1/Y

- **Software Maintenance**  
(including fix delivery and minor updates)
- **Application Support**  
(including Lev.2 and Lev.3 with NBD approach)
- **New Package** (Pretrained Models Update) & Mayor Version Release
- **4h. Assistance:** +50% on the application support fees
- **365x24x4h Assistance:** +100% on the application support fees for the 4h assistance rate

## EDUCATION

**5 days Support and  
Education**



# TAILOR PREM GOLD - MAX 100 TB

## APPLICATION

**Actual version: 1.16**

**Lifetime License**

- **Including:** User Manager Console, Virtual Assistant Manager Console, Rag Datas Manager Console, Pretrained Model Certification (Max 10)
- **Future Features:** Agentic Feature, MagicDoc, Knowledge Transformers

## CONFIGURATION

**Remote Configuration  
Package  
(inside certified  
environment through  
VPN connection)**

## MAINTENANCE 1/Y

- **Software Maintenance**  
(including fix delivery and minor updates)
- **Application Support**  
(including Lev.2 and Lev.3 with NBD approach)
- **New Package** (Pretrained Models Update) & Mayor Version Release
- **4h. Assistance:** +50% on the application support fees
- **365x24x4h Assistance:** +100% on the application support fees for the 4h assistance rate

## EDUCATION

**5 days Support and  
Education**



# THANK YOU!

## CONTACT US

E-mail: [Info@wizh.it](mailto:Info@wizh.it)

Website: [wizh.it](http://wizh.it)



POWERED BY

