



This project is co-financed by the European Union
and the Republic of Türkiye



ICTürkiye2025
10 April, İstanbul

PRESENTER FULL NAME: Maurizio POLLANO or Davide BURLON or Gian Luca BALDO

ORGANIZATION: LIFE CYCLE ENGINEERING - ITALY

WORKSHOP NAME: SUSTAINABILITY ANALYSIS and TOOLS for EU Projects

E-MAIL: info@lcengineering.eu



Description of the Organisation

OUR TEAM

Life Cycle Engineering

>20

YEARS OF
EXPERIENCE



On specific fields

LCA/EPD/CSR analysys and webtool, eco-design, eco-labelling, carbon footprint, environmental communication, environmental law

>500

PROJECTS



Developed to support companies sustainable business

>40

CONSULTANTS



Inter-disciplinary skills

www.lcengineering.eu



LAURA Management Engineer	STEFANO Mechanical Engineer	STEFANIA Agronomist	LUCA Energy Engineer	ISABELLA Environmental Engineer
ASSUNTA Environmental Engineer	ALICE Materials Engineer	SONIA Environmental Engineer	MYRTA Communication Assistant	LUCA Environmental Scientist
GIULIO Environmental Economist	ALESSIA Graphic Designer	ANNA Chemical Engineer	FRANCESCA Industrial Ecologist	MARTINA Chemical Engineer
FABRIZIO Environmental Engineer	GIAN LUCA LCA Engineer	MASSIMO Energy Engineer	ELENA Communication Assistant	PAOLA Administration and Human Resources
PAOLA Chemist	RICCARDO Environmental Engineer	MARTINA B. Environmental Scientist	LORENZO Environmental Scientist	ANDREA Environmental Economist
SIMONA Accountant Assistant	CHIARA Chemical Engineer	ELISABETTA Environmental Scientist	MARIA LUCIA Chemical Engineer	
BARBARA Civil Engineer	MASSIMO Graphic Designer	MAURIZIO IT and Web Developer	SOFIA HR Generalist	
GIAMMARCO Environmental Scientist	ELISA Materials Engineer	FRANCESCA Communication Assistant	STEFANO Energy Engineer	
SARA Graphic Designer	DAVIDE Energy Engineer	ALESSANDRA Industrial Chemist	CHRISTIAN Management Engineer	



Life Cycle Engineering (LCE) is an independent consulting firm, providing professional solutions and tools for **Life Cycle Assessment (LCA)**, **Life Cycle Costing (LCC)**, **Social-LCA (S-LCA)**, **eco-design**, environmental communication and regulatory compliance to private companies and business associations.

LCE usually participates in institutional projects with the European Commission and some national/regional agencies. In the last years, LCE has been involved in more than 20 H2020, LIFE and service contract projects with the European Commission.

Key words:

Life Cycle Thinking and Life Cycle Assessment
Eco-Design

WebTool for sustainability assessment

Environmental Product Declarations (EPD)

LCE fully owns Zprotocol, an IT company specialized in the development of web based platforms to support data collection and sustainability analyses of products and processes. LCE designs the web platform while ZP develops and deploys it.



Cooperation between sustainability and IT backgrounds, to offer tailored and user-friendly web platforms for the evaluation of environmental performances in EU projects where life-cycle-thinking approach is required to assess new technology feasibility.



Various platforms deliverable:

- Excel-based tools
- Web-based tools
- Power-BI dashboards

Your Research Fields: LCE in EU projects

What we currently do in EU-funded projects:

- LCA/LCC/S-LCA
- Ecodesign guidelines
- Communication and dissemination
- WebTool for LCA/LCC



Our various background:

- Engineers
- Economists
- Chemists
- Environmental scientists
- Graphical designers



EU project topics covered:

- Steel industry waste recycling
- Advanced manufacturing systems
- Ceramic and glass industry energy saving
- Biobased and ecodesigned synthetic fibres, and polymers
- Sustainable biorefinery for protein production
- Carbon Capture Usage and Storage
- Advanced cells for e-mobility
- Defence equipment circularity
- Innovative materials for wind turbines

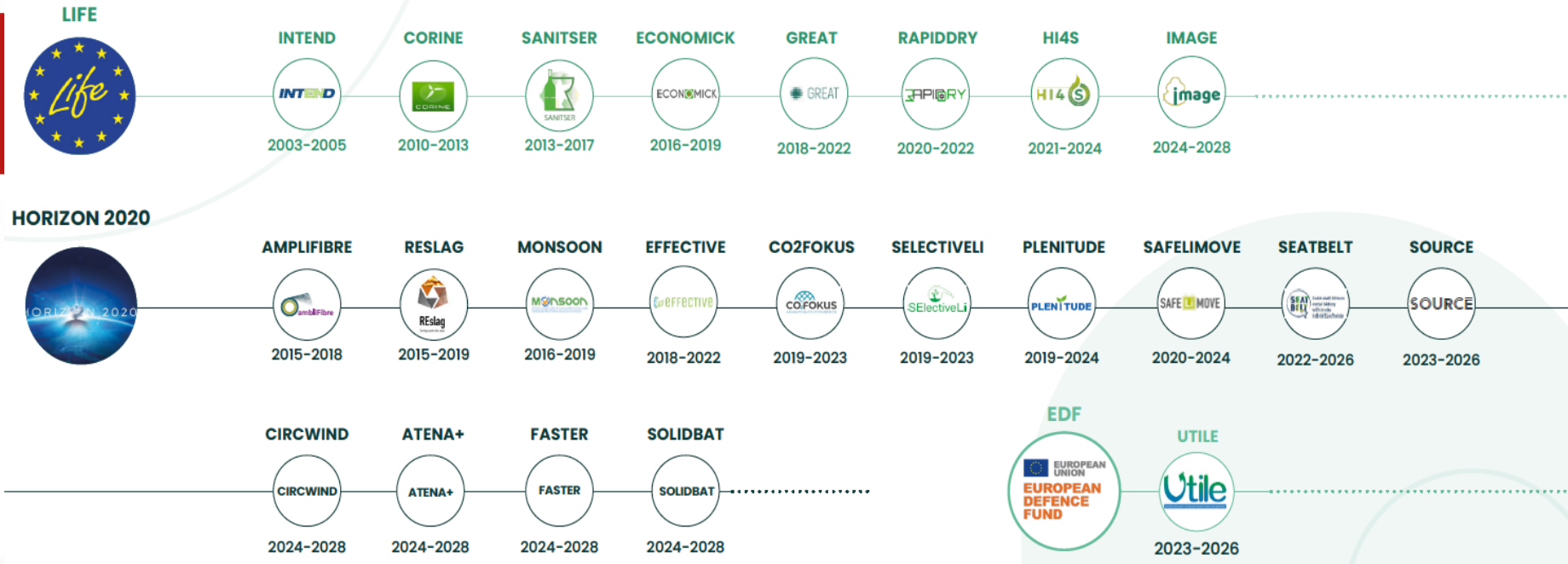


A flourishing experience with EU projects:

- 2020: First activity for the EC
- 2003: First EU LFE project
- 2015: First EU H2020 project
- 2025 on: 8 Horizon and LIFE projects active



**LCE Experience
EU Projects**



Projects Idea - EC requirements for funded projects



Sustainability Assessment (LCA/LCC/SLCA) → mandatory task for European projects



Our **added value** as consortium partners is to **offer a consolidated background** and expertise to deal with **EC requirements** on sustainability.



EC is pushing on **materials criticality projects** (according to CRMA¹), to ensure EU access to a secure and sustainable supply of critical raw materials, to meet its **2030 climate and digital** objectives → We suggest strong focus on **circularity, ecodesign and criticality assessment**, topics we offer our knowhow for, to draw successful project proposals.

¹ Critical Raw Materials Act → https://single-market-economy.ec.europa.eu/sectors/raw-materials/areas-specific-interest/critical-raw-materials/critical-raw-materials-act_en

Projects Idea – Sustainability package for EU projects



LCA/LCC/SLCA

- Sustainability performances of innovative technology
- Comparison with current state-of-the-art solutions



Ecodesign

- Focus on product design for reuse and recyclability and impacts minimising
- Ensuring compliance with EU regulations



Circularity

- Technology review on the innovative technology end-of-life treatments, focusing on recycling and reuse
- Circularity performances assessment, by tailored KPIs



Criticality

- Critical raw materials evaluation according to CRMA
- Geopolitical and social considerations for critical materials supply



Biodiversity

- Risk and impact assessment of innovative technologies

¹ Critical Raw Materials Act → https://single-market-economy.ec.europa.eu/sectors/raw-materials/areas-specific-interest/critical-raw-materials/critical-raw-materials-act_en



PRESENTER CONTACT
DETAILS

info@lcengineering.eu

www.lcengineering.eu

COUNTRY: ITALY