

THE ENERGY OF TOMORROW STARTS TODAY

COMPANY

VASISOLAR, with long experience in photovoltaic systems, specializes in the construction of support systems, covering the requirements of each project.

By combining innovative design, **automated production process**, and top-quality materials with **Magnelis®** coating technology, we guarantee high-quality manufacturing, faster delivery, and long-term return on your investment. **Magnelis®** is a breakthrough in **corrosion protection**, providing corrosion resistance that is **significantly higher** than conventional galvanizing and similar to aluminum.

Our products are distinguished for their flexibility and adaptability to **different soils, climates, and project specifications**. Products are also designed according to the investor's requirements, considering the area's weather and geological conditions.

The company is housed in a modern 1.000 sq.m. building at the 1st km of Ptolemaida -Florina road. The production of steel products is achieved through an automated process, giving maximum precision and quality of manufacture. **We guarantee the fastest delivery of your photovoltaic base thanks to:**

Protected by

Magnelis®

- 1 Availability of raw materials
- 2 Flexible design, and
- 3 Speed of production.

CERTIFICATIONS



Our systems are designed for **wind loads of 33m/s** and snow loads of 0.80Kn/m² based on the current **Eurocodes 1, 3, 8, and their National Annexes**. A structural study and certification by the independent organization TÜV AUSTRIA accompanies them.

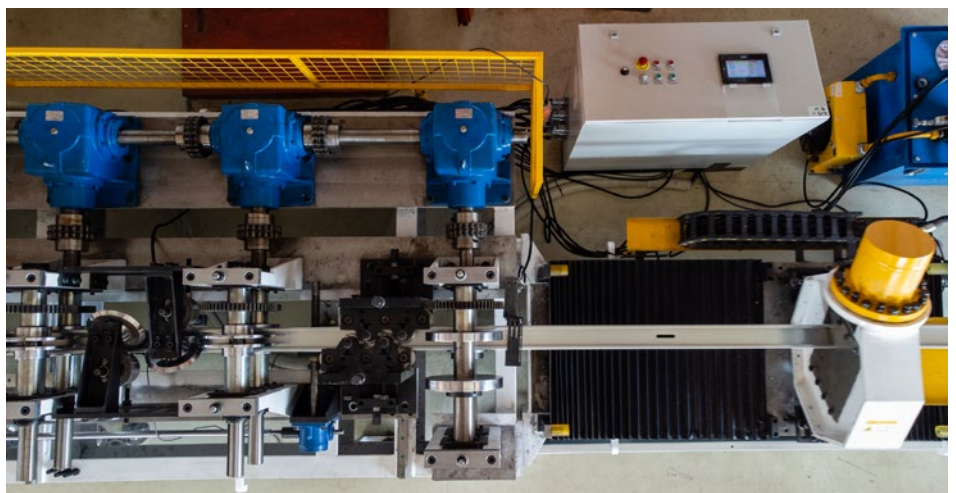
In addition, the company operates according to the strictest standards.



ISO 9001:2015
QUALITY MANAGEMENT SYSTEM
ISO 14001:2015
ENVIRONMENTAL MANAGEMENT
ISO 45001:2015
HEALTH AND SAFETY

ADVANTAGES

- ¹ High hardness materials S350GD
- ² Magnelis® corrosion protection
- ³ Robust design
- ⁴ Adaptable to different soils and slopes
- ⁵ Adaptation to different panel types
- ⁶ Ease to assemble
- ⁷ Durability over time
- ⁸ Economy of maintenance
- ⁹ Immediate availability



VASISOLAR SUPPORT SYSTEMS

GROUND SUPPORT BASES



2VU20: Two-pole fixed
Support Type: **Ground**
Panel Type: **Monofacial & Bifacial**
Hardness: **S350GD**
Corrosion Protection: **Magnelis®**
Panel Series: **2**
Panel Orientation: **Vertical**
Tilt Angle: **20° – 35°**
Standard table: **2 * 20 pieces**

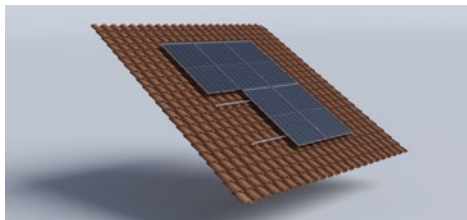


2VU20BF: Two-pole fixed, Bifacial
Support Type: **Ground**
Panel Type: **Monofacial & Bifacial**
Hardness: **S350GD**
Corrosion Protection: **Magnelis®**
Panel Series: **4**
Panel Orientation: **Horizontal**
Tilt Angle: **20° – 35°**
Standard table: **4 * 10 pieces**

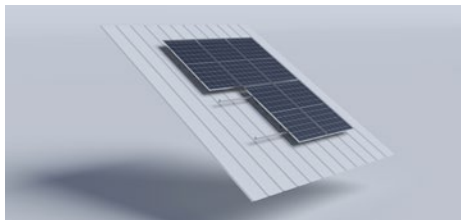


1VU20: Single-pole fixed, single-row panel
Support Type: **Ground**
Panel Type: **Monofacial & Bifacial**
Hardness: **S350GD**
Corrosion Protection: **Magnelis®**
Panel Series: **1**
Panel Orientation: **Vertical**
Tilt Angle: **25°**
Standard table: **1 * 20 pieces**

ROOF SUPPORT BASES



Tiled roof
Support Type: **Tiled roof (net-metering)**
Tiled roof: **Monofacial**
Hardness: **S320GD**
Corrosion Protection: **Z275**
Panel Series: **Roof Layout**
Panel Orientation: **Vertical & Horizontal**
Tilt angle: **Parallel to the roof**



Industrial Roof
Support Type: **Industrial Roof**
Tiled roof: **Monofacial**
Hardness: **S320GD**
Corrosion Protection: **Z275**
Panel Series: **Roof Layout**
Panel Orientation: **Vertical & Horizontal**
Tilt angle: **Parallel to the roof**



Flat Roof
Support Type: **Flat Roof – Concrete Slab**
Tiled roof: **Monofacial**
Hardness: **S320GD**
Corrosion Protection: **Z275**
Panel Series: **Roof Layout**
Panel Orientation: **Horizontal**
Tilt angle: **25°**

SHELTERS - PARKING



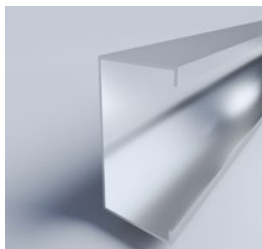
Shelters - Parking
Support Type: **Ground**
Panel Type: **Monofacial & Bifacial**
Hardness: **S350GD**
Corrosion Protection: **Magnelis®**
Standard ceiling: **4 * 5 pieces**
Panel Orientation: **Vertical**
Tilt Angle: **0° - 10°**

COMMERCIAL DIMENSIONS



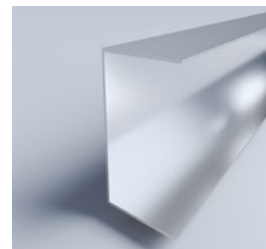
Type U Rail
X * Y
41mm * 62mm
41mm * 52mm
41mm * 41mm
41mm * 21mm

Thickness: **1,00mm - 2,0mm**
Commercial lengths: **2,50m. / 3,20m. / 3,60m. / 4,00m. / 6,00m.**



Building Block Type C
X * Y * Z
X : 80mm - 300mm
Y : 40mm - 80mm
Z : 0mm - 20mm

Thickness : **2,00mm - 3,0mm**
Commercial lengths: **2,50m. / 3,20m. / 3,60μ. / 4,00m. / 6,00m.**



Building Block Type P
X * Y
X : 80mm - 300mm
Y : 40mm - 80mm

Thickness: **2,00mm - 3,0mm**
Commercial lengths: **2,50m. / 3,20m. / 3,60m. / 4,00m. / 6,00m.**

