



RISHTOVKA-AGRO

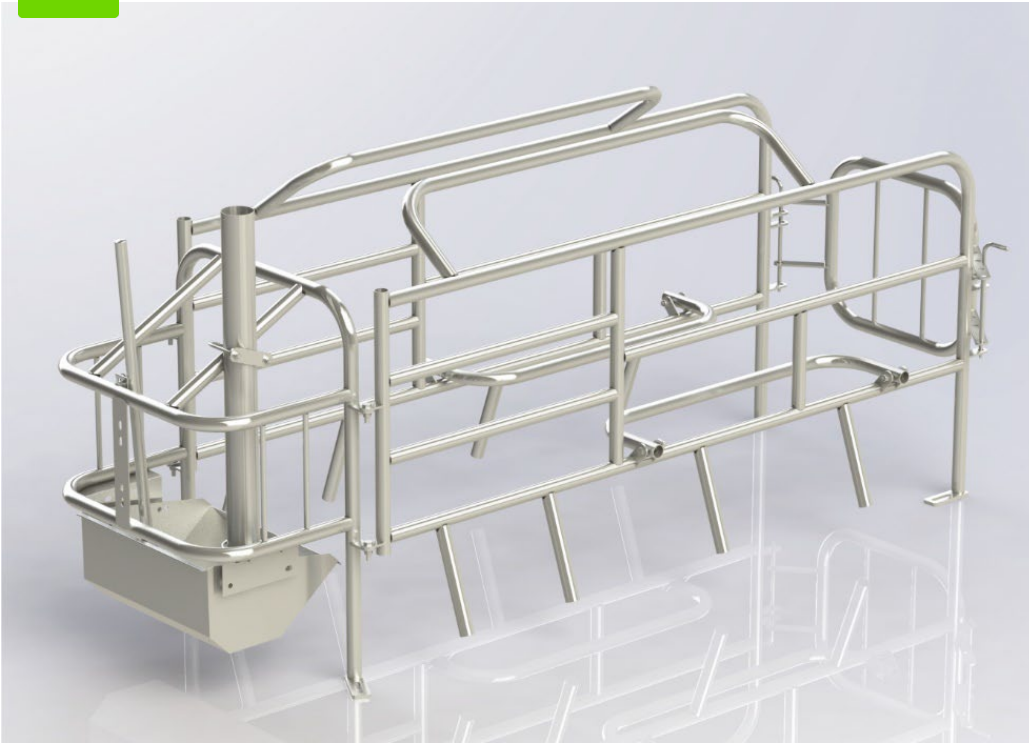
Equipment for pig farming

# Equipment for the maintenance of sows and litters



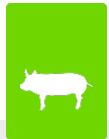


## Farrowing machine model 007

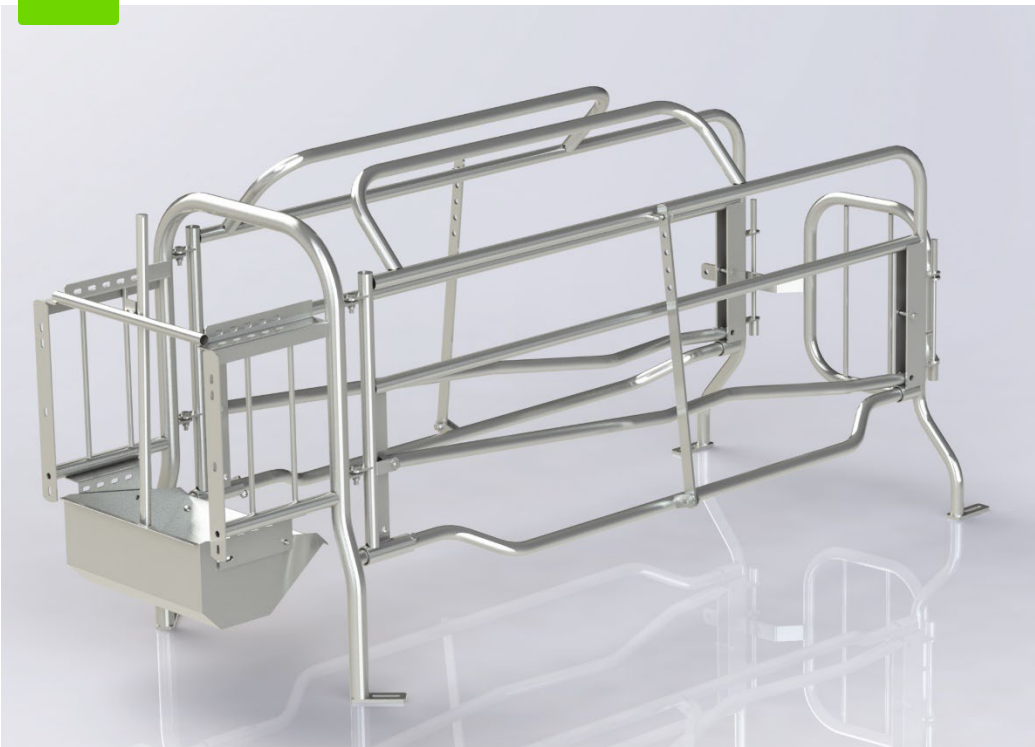


### Specifications:

- The width of the rear part can be adjusted to three positions: 579/628/679 mm.
- The length of the stall inside, without the trough, is adjustable depending on the size of the sow (1708...1933 mm).
- Equipped with a tipping trough with a volume of 14 liters.
- The model is equipped with protective and distribution arches.



## Farrowing machine model 001

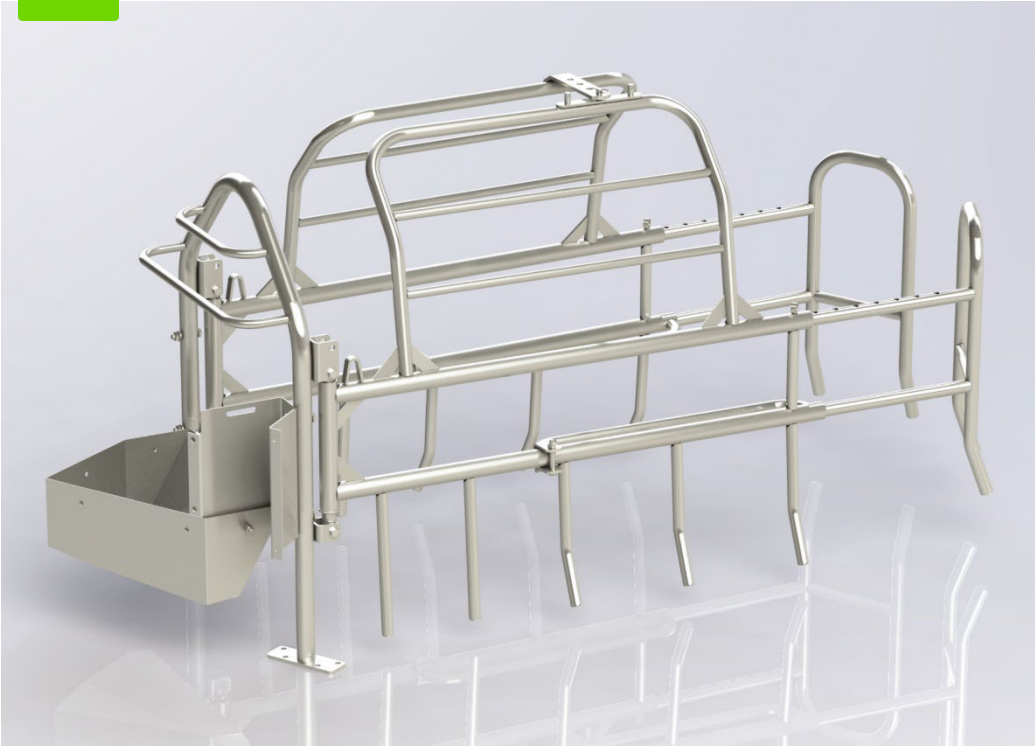


### Specifications:

- The width of the rear part of the cage has five positions 492/530/575/613/658 mm.
- The length of the cage without feeder is adjustable depending on the size of the sow (1742...1906 mm).
- The presence of protective arcs.
- The height of the separating arcs can be adjusted.
- Tilting feeder with a volume of 14 liters.
- Possibility of mounting to the main wall.



## Farrowing machine model 003



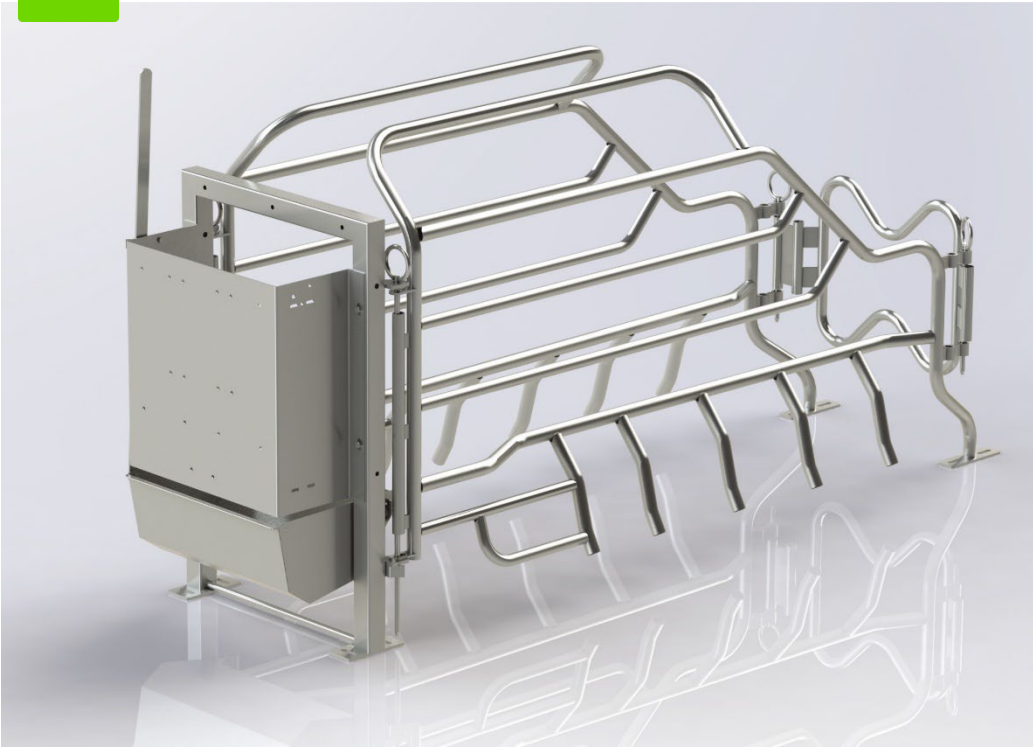
### Specifications:

- Possibility to install the machine in the right or left corner of the box.
- Removable protective arcs.
- Possibility of opening the sidewall upwards and sideways.



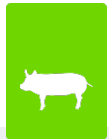


## Farrowing machine model 016

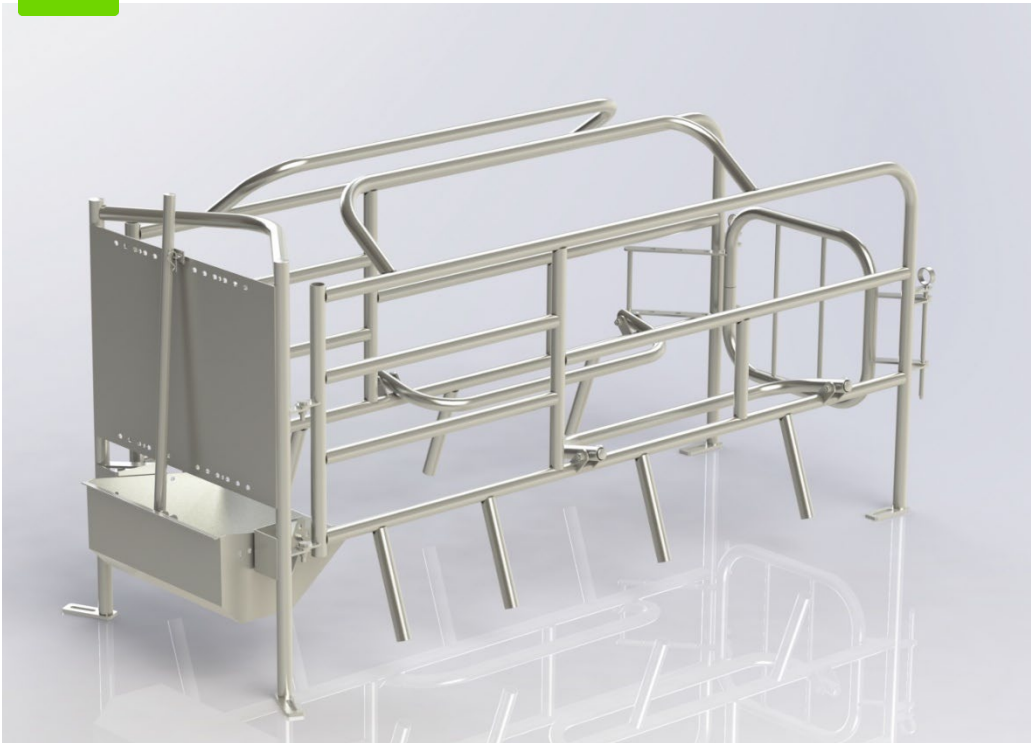


### Specifications:

- The lower curvature of the door allows free access to the piglets being born.
- The upper curve prevents damage to the sow's genitals.
- A protective cover prevents feed from being thrown out of the trough.
- The shapes of the dividing arcs follow the contours of the sow, creating a comfortable environment for her.
- A tipping trough with a side or central fastening.

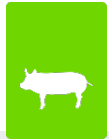


## Farrowing machine model 012

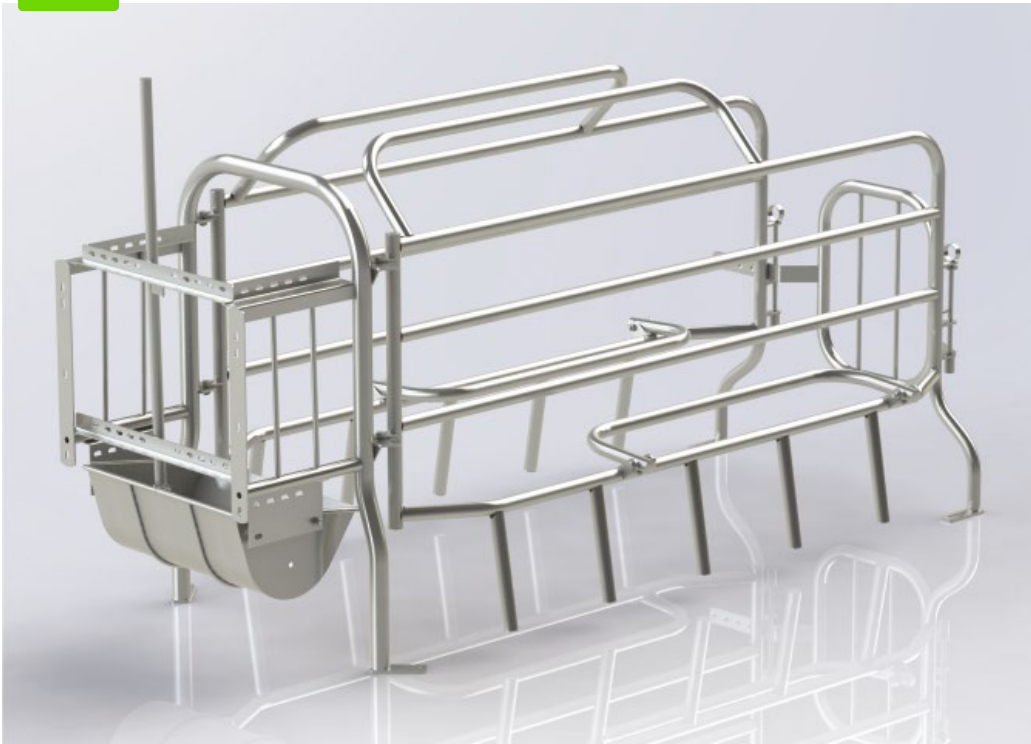


### Specifications:

- The width of the rear part can be set in three positions: 579/628/679 mm.
- The length of the machine to the trough is adjustable from 1521 to 1747 mm.
- Equipped with a 14-liter trough with a tipping mechanism.
- The model is equipped with protective and distribution arches.



## Farrowing machine model 002



### Specifications:

- Adjustable width of the rear part of the machine: 545...705 mm.
- Equipped with a tilting trough.
- Equipped with protective and distribution arches.



Equipment for  
inseminating sows,  
individual stalls for boars,  
group housing systems.





## Sow insemination and individual housing stall model 117

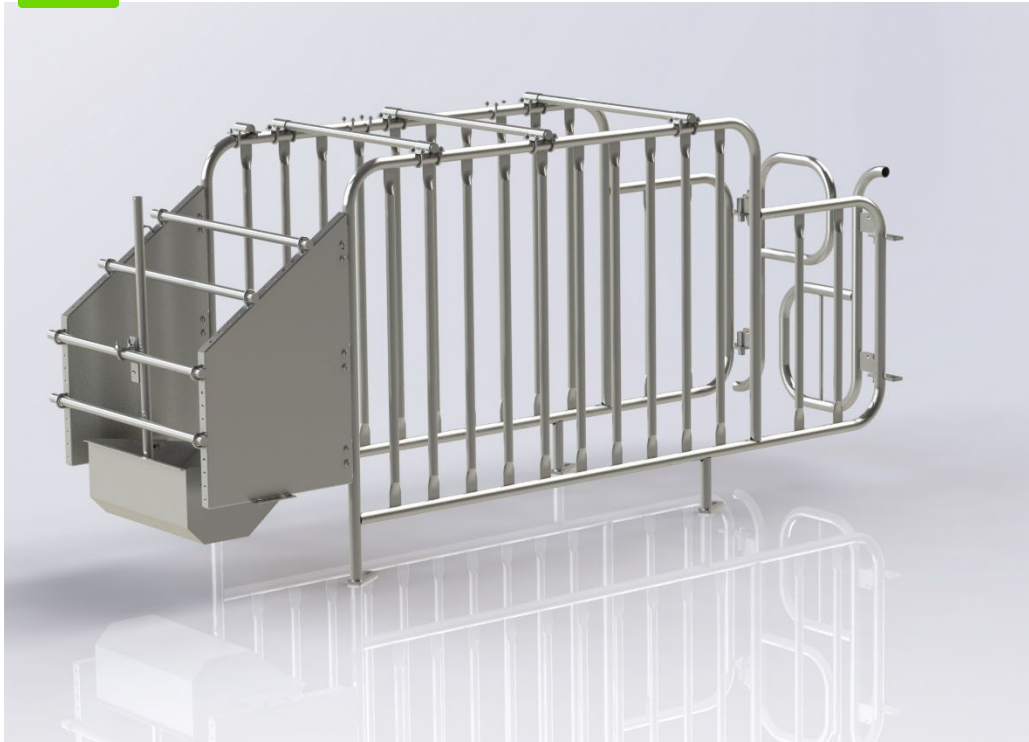


### Specifications:

- Three width positions of the stall: 600/650/700 mm.
- The absence of pipes above the sow allows the staff to work comfortably with the animal.
- The trough is common with the side.
- The stall is made of steel processed by the hot-dip galvanizing method.



## Sow insemination and individual housing stall model 102



### Specifications:

- Width of the stall: from 600 to 700 mm.
- The rear leg rotates 180 degrees.
- Possibility of using individual (14 L) and common water bowls.
- The doors have three opening positions.



## Sow insemination and individual housing stall model 117



### Specifications:

- Width 600/700 mm.
- Allows for the use of an individual or common trough.
- Double-door design with three door opening positions.
- Rear leg rotates 180°.
- Made of galvanized steel pipe (hot zinc 100 - 50  $\mu\text{m}$ ).



## Equipment for group housing of pigs



### Specifications:

- The height of the fence varies depending on the requirements and can be 1m, 1.1m, 1.4m, 1.5m.
- The step of the cross pipes is possible at 125/140 mm.
- The length of the fence according to the project.
- Material of manufacture - galvanized steel.





## Equipment for group housing of pigs



### Specifications:

- Depending on the intended use, the boxes can be of different sizes.



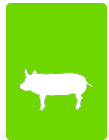


## Bunker-type feeders for pigs

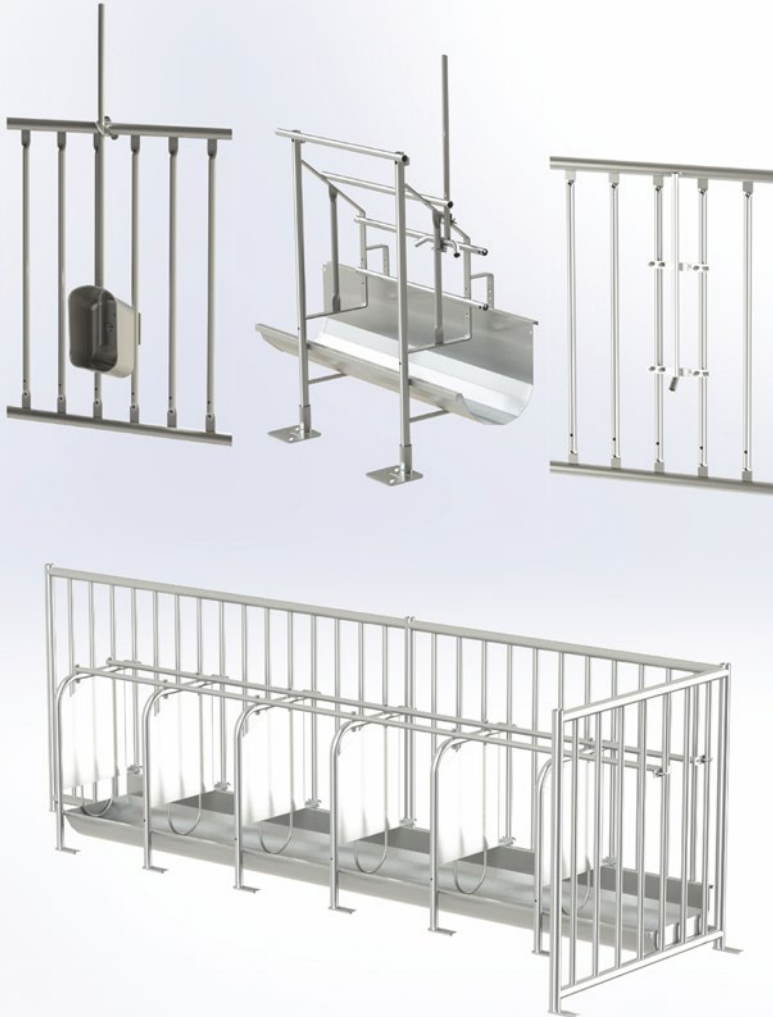


- Specifications:

Feeders are manufactured in single-sided and double-sided designs with the number of compartments ranging from 2 to 6.

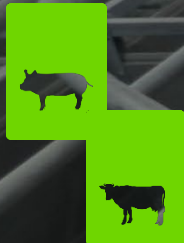


Waterers, feeding systems,  
and others.



- You can also order fence elements separately. Contact us in any convenient way, and our manager will provide consultation and cost calculation.





• Our industry  
experience is 18  
years



RISHTOVKA-AGRO

Equipment for stall  
maintenance at dairy  
farms.

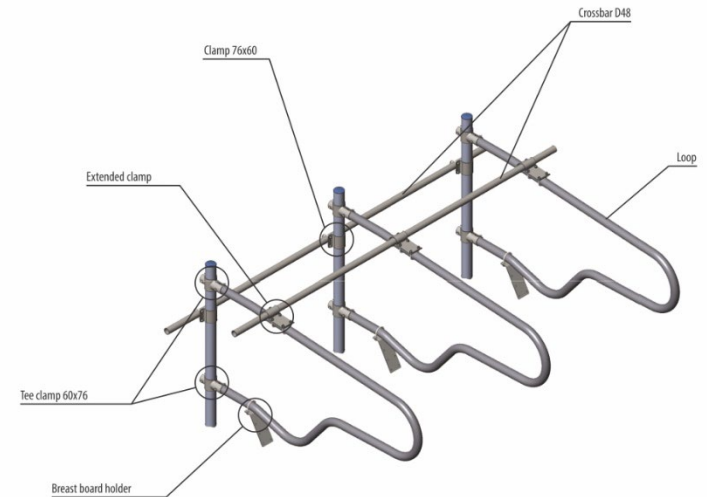




## Fasteners and dividers for loose housing of cattle

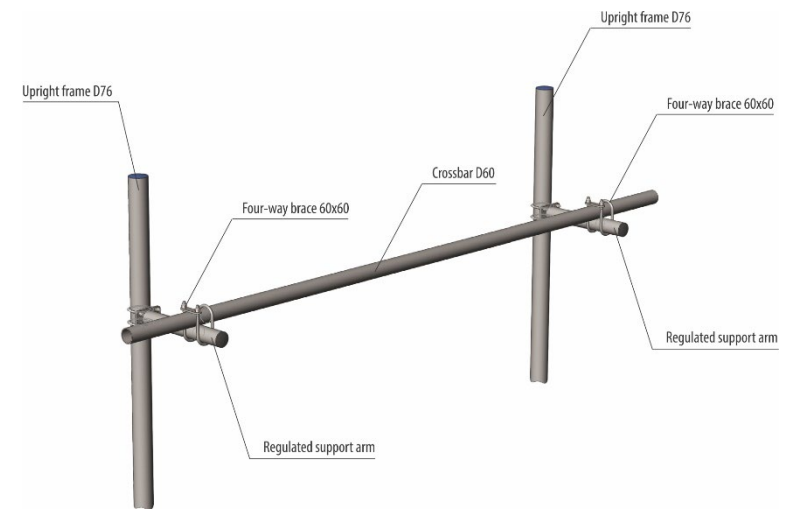


### Specifications:



Feed table barriers.



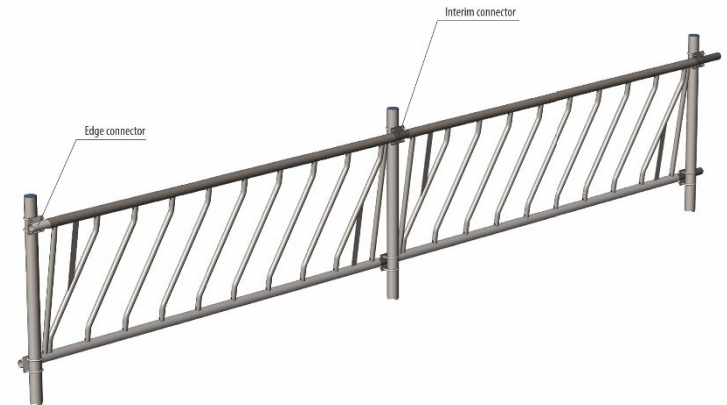




## Diagonal grates



### Specifications:



Diagonal feeding grids can be used for both young and adult animals. The advantage of such a barrier is that the diagonal feeding grid prevents the scattering of feed by animals during feeding (by 5-10%). The size of the diagonal openings may vary depending on the age group of cattle.

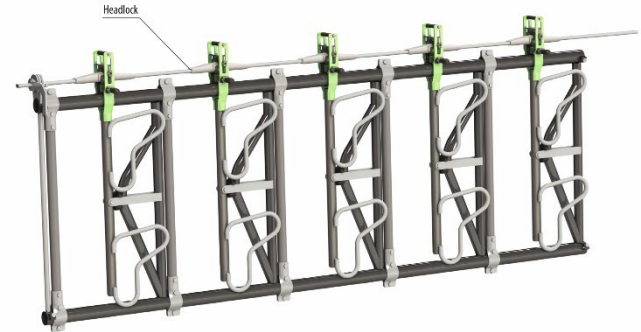




## Headlocks



### Specifications:



Headlock - a feed table barrier with a mechanism that self-locks.

Headlocks for cows are used to secure large horned cattle near the feed table. This happens automatically when the animal moves its head between the bars. The mechanism engages under the weight of the animal and secures the cow in a natural position for feeding.



Equipment for organizing  
animal movement on the  
farm.

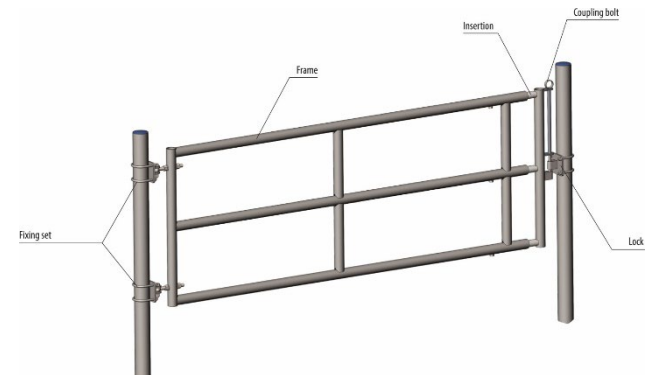




## Gates, fences for cattle chutes



### Specifications:







- 87% of all components are produced at our own manufacturing facilities. We can offer optimal production lead times and prices.





Thank you for your consideration