



LIFESENSE

Non-invasive Measurement of Glucose

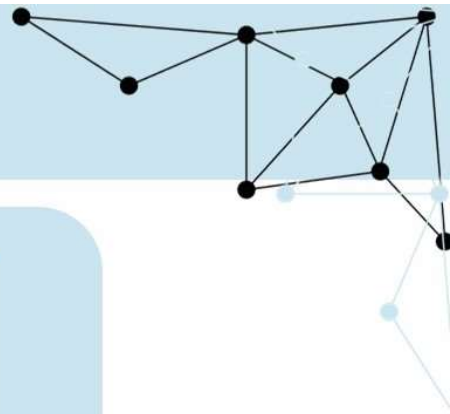
Helin Hussein, Jannis Pohl

info@healink.at

+43 660 6245445

©-Healink

HAVE YOU EVER...

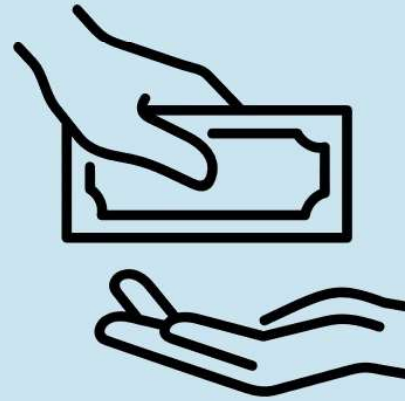


PROBLEMS OF DIABETICS

Painful

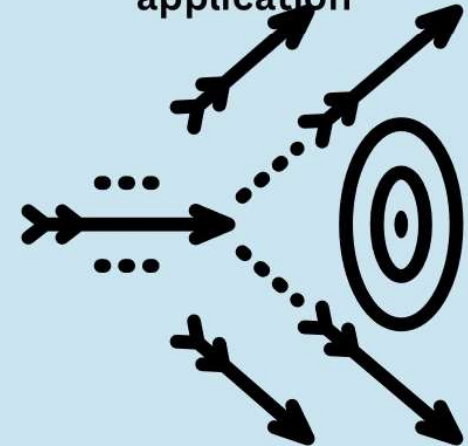


Expensive



*Traditional = €1,200/year
*CGM systems = €1,680/year

Lack in Accuracy due to incorrect application



LIFESENSE

Individual Calibration



Personalized Skin Analysis

Continuous Measurement



Non-Invasive Measurement of
Glucose, SpO₂, Heart rate &
Temperature



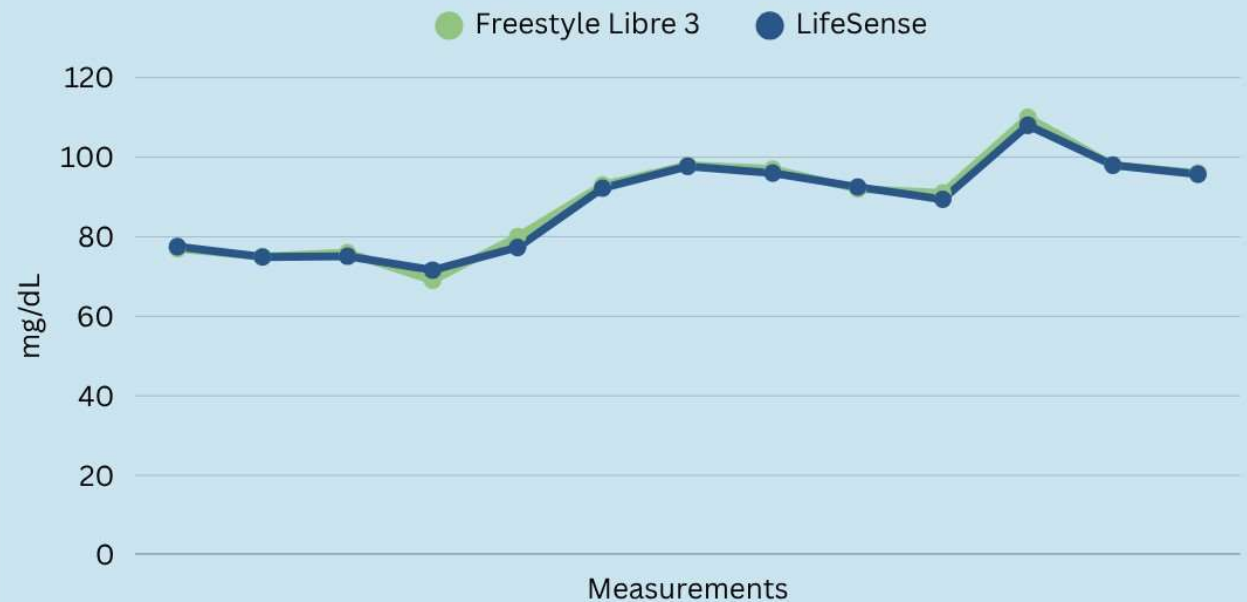
Smartphone App



BENEFITS

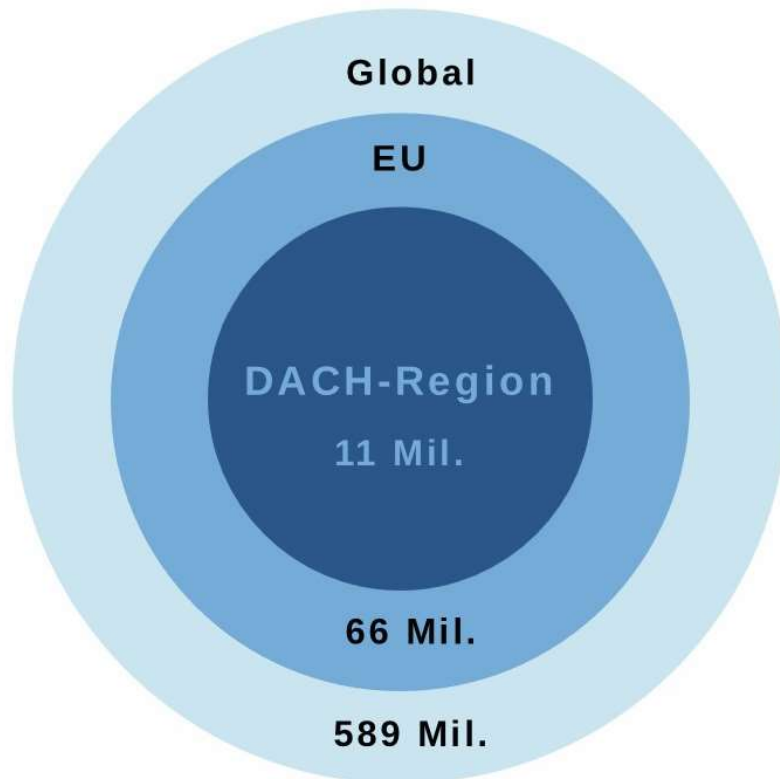
- > No Needles
- > 24/7 Measurement
- > High Accuracy
- > Reusable
- > Low Recurring Costs

MEASUREMENTS OVER A DAY



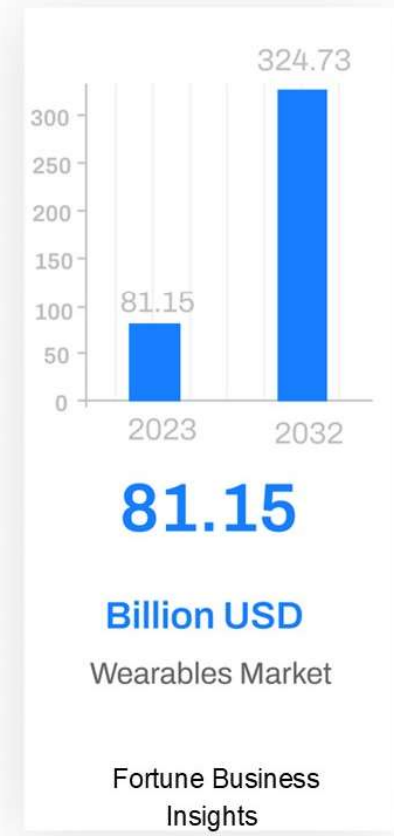
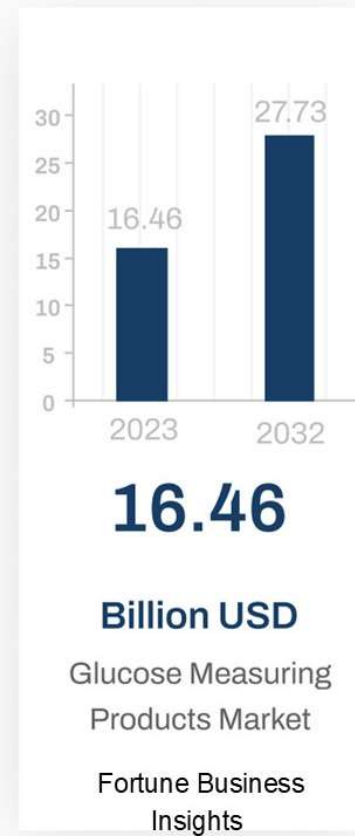
MARKET

Diabetes Patients (2024)



Source: IDF Diabetes Atlas

Market size

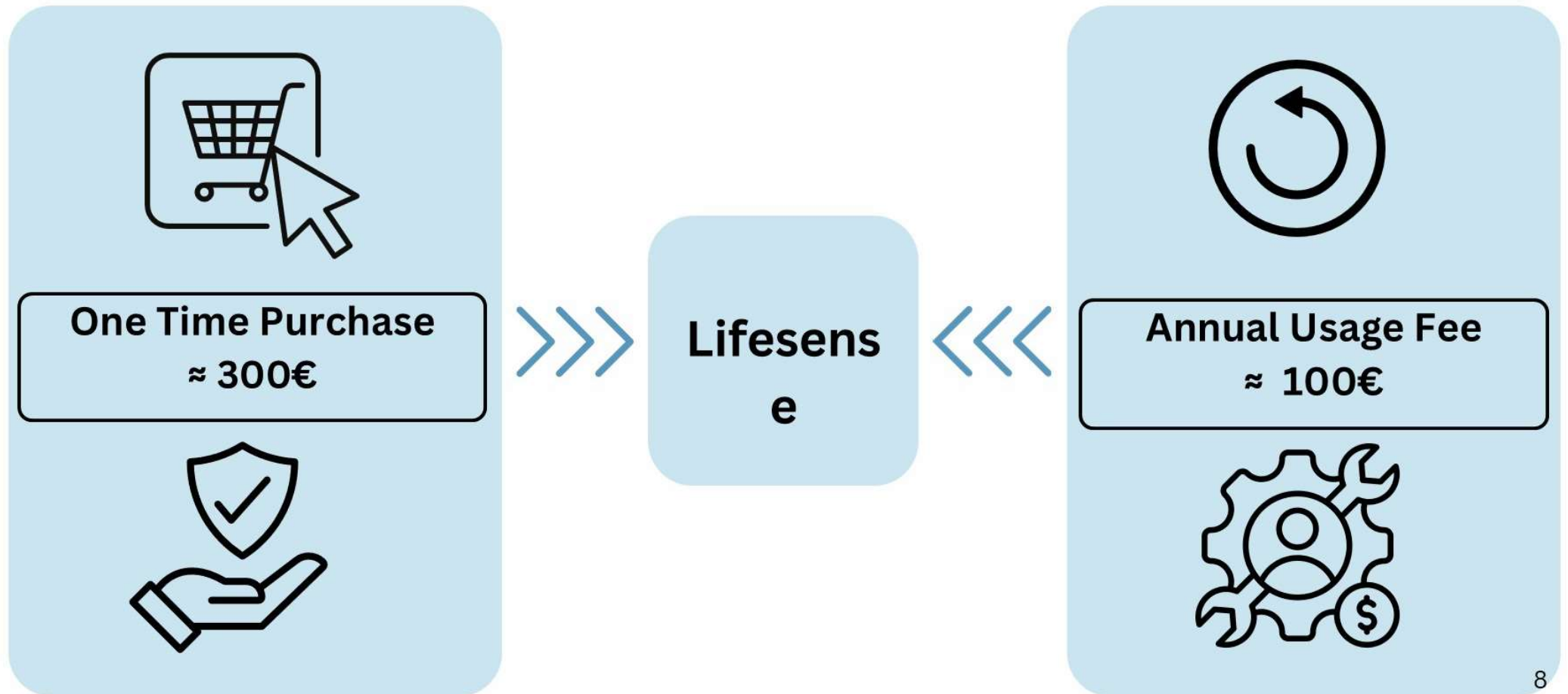


©-Healink

COMPARISON

Criteria	Diamontech	Dexcom	Freestyle libre	LifeSense
No Needles	✓			✓
Reusable	✓			✓
Continuous Measurement		✓	✓	✓
Multiple Vitals				✓
Accuracy	no data	✓	✓	✓

BUSINESS MODEL



ROADMAP

Prototype < 8%
Variance
FFG Funding
Patent Application



Lifesense Test-Kit
Pilot Tests
(15 Persons)
Series Zero



Setup QMS
and Partnerships
Clinical Trial

1. Final Product
MDR Application



OUR TEAM



Helin Hussein



Matthias Hansen



Jannis Pohl



Christian Kleber



Timo Rauth
Technische Recherchen



Dr. Timo Rauth



Cactus



Die INNOVATIONsstiftung
für BILDUNG





THANK YOU

**“THE BEST WAY TO PREDICT THE FUTURE IS TO
INVENT IT.”**

– Alan Kay

We invite you to become part of our journey. Contact us for partnerships, investment opportunities and more information.



info@healink.at
+43 660 6245445
<https://healink.at>

©-Healink 11