

# LTW *STC*

## STACKER CRANES – GUARANTEED QUALITY WITH FULL FLEXIBILITY

We have built more than 2,500 rail-mounted stacker cranes over more than 40 years and have therefore amassed a wealth of expertise in a wide range of sectors.

One of our most outstanding quality features is production according to ropeway standards and being part of the Doppelmayr Group. The global market leader in ropeway construction produces nearly all of our moving parts, so we can concentrate fully on designing the system layout – and there are no limits on our creativity.

Be it stacker cranes for 31 m long stored goods, containers weighing 18,000 kg, or boats – we can do it all, from standard pallet warehouses through to huge heavy-duty systems.

So it's no surprise that our stacker cranes can be used in absolutely any sector, from the food industry and deep-freeze solutions to the automotive sector and highly sensitive pharma industry. We can respond to our customers' individual requirements in the most effective way possible.

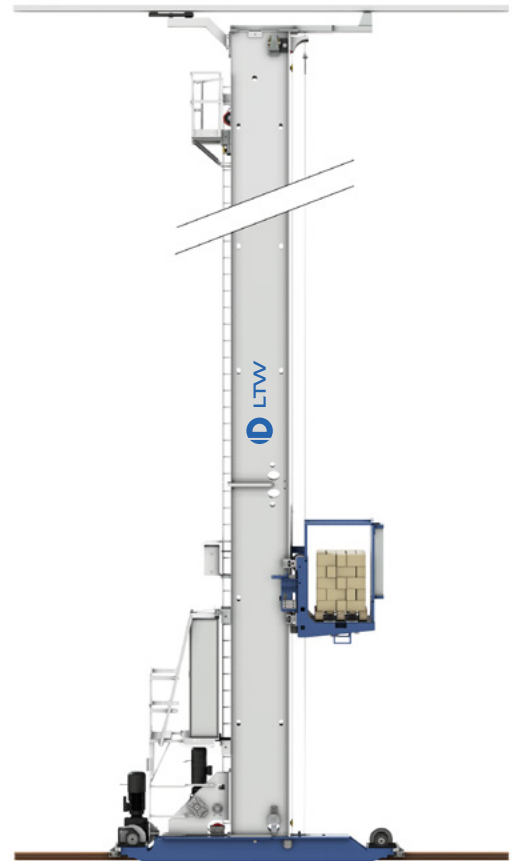
# LTW<sup>STC</sup> EQUIPMENT & OPERATION

## Innovation takes many different versions

All of our stacker cranes are built to ropeway standards and are available in different versions. We can provide single, double, or four-mast as well as aisle-bound or aisle-changing stacker cranes, as required.

We never stop developing our products and keep pace with the latest trends. Our components are equipped with proven control technology in a modular design – while robust and dirt-repellent versions, simple options for expansion, and long product life cycles ensure smooth operation.

Cameras can be fitted on the lifting carriages of our stacker cranes where requested by our customers. This creates the advantage of easy troubleshooting, even at these heights. Our digital service platform, LTWcare, offers a live view of the image material at any time.



« **The LTW stacker cranes have both a robust, rigid construction and impressive weight optimization. Every ton of steel saved saves energy later with every pallet movement. We were impressed by the manufacturing quality to ropeway standard within the Doppelmayr Group.**

Rainer Reichelt, Logistics Planner at Fresenius Medical Care

In addition to controlling our stacker cranes using a stationary HMI, there is now the convenient option of operating them directly on site using a mobile tablet. The advantage is that the operator can move anywhere they want to in the warehouse and has a clear overview of any faults that occur on the usual user interface, the LIOS Cockpit. This lets them keep a constant eye on the entire system visualization and can address issues as effectively as possible.

One thing's for certain: you can count on compliance with the usual security standards. And if the user is unable to resolve the issue themselves, they can switch over to LTWcare and submit a service request. This makes it even easier to get maintenance, troubleshooting, and commissioning taken care of.







**SUPERCAPS**

## LTW<sup>STC</sup> HYBRID STC

### Energy-efficient with a low connected load

Our stacker cranes can now also be fitted with energy storage units (supercaps). What does this mean? Put simply, the energy storage unit and intelligent load management ensure that energy is never lost without being utilized, but is reused in its entirety.

In addition to saving up to a third of the energy used, another advantage is that the connected load required is 80% lower thanks to the supercaps. The power supply cable for the stacker crane has a significantly smaller diameter as a result.

Thus, thanks to the hybrid stacker crane, energy resources are saved.



## LTW<sup>STC</sup> PICKING DOORS

### We put safety first

With our patented picking door system, we have also created a safe and trouble-free option for carrying out order picking within the high-bay warehouse, right next to the lane.

How does this work? The doors slide horizontally, keeping the stacker crane lane and the picking area separate from each other. They only open when goods from the rack area move to the picking area.

Only one drive per picking area and side is needed on the stacker crane. Not only does this save costs, it cuts down on complex cabling. Our doors also offer the advantage of being lightweight, which can have a significant influence on the structure of the rack.



## LTW<sup>STC</sup> SWITCH TECHNOLOGY

### Maximum redundancy

Did you know that the aisle-changing mechanism we developed in-house doesn't require transfer devices, monitoring equipment, or extensive maintenance? Plus, a small number of stacker cranes can cover large areas of the warehouse, presenting a cost-effective option where handling capacity is not the top priority. But the biggest advantage of our switch technology is the fact that it ensures redundancy in system operation through the use of multiple stacker cranes. What does that mean for you? The availability of your goods in the warehouse is ensured to the greatest possible extent.

« **The LTW shuttle system is the right solution for the highest performance requirements. Plus, it can be used at temperatures as low as -30 °C without any issues.**

Andreas Lederer, CTO at LTW Intralogistics GmbH

## LTW<sup>STC</sup> SHUTTLE SYSTEM

### High Performance

If speed is paramount, we have an interesting solution to hand. We developed a shuttle system that uses a number of stacker cranes positioned one above the other in an aisle. A perfect interplay between the vertical conveyor and stacker cranes plays a key role in this, because the transport units are conveyed from and to the respective stacker cranes, while these move almost exclusively in the sideways direction. This approach gets the maximum out of the stacker cranes in terms of speed.

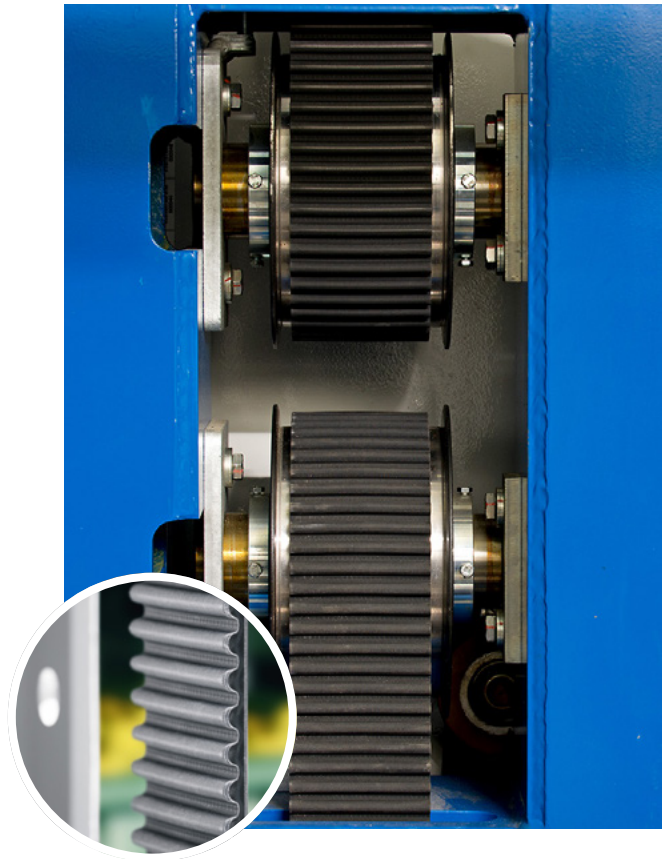




# LTW<sup>STC</sup> BELT TECHNOLOGY

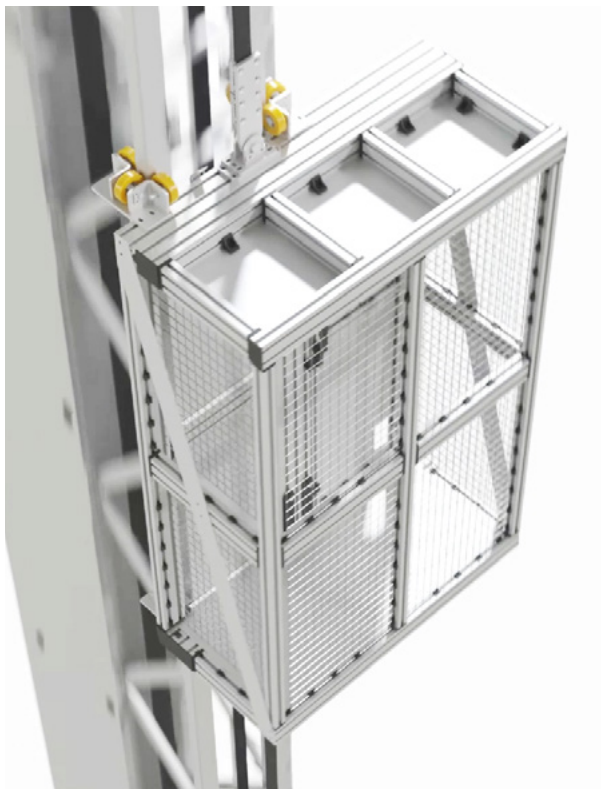
## Guaranteed to last

Put simply, the advantages of our patented belt technology are a long life span, short positioning times, and maximum performance. Thanks to our committed development work, the belt is supplanting the rope as the lifting medium in more and more stacker cranes – putting us right at the forefront of the market. While it's true that belt technology has played a role in small-parts warehouses for some years now, we are already using belts in projects involving containers with a weight of 18,000 kg. And the best part is that our belt can still be used to best effect at temperatures ranging from -30 °C to + 60 °C.



« **LTW made the very plausible point that the higher price was more than justified by the better performance and long lifespan of the belt – and we weren't disappointed.**

Johannes Thomann, Technical Manager at GEOS



## LTW<sup>STC</sup> SCOTTY

### Working at heights made easy

The SCOTTY from LTW allows for risk-free maintenance work at heights of up to 45 m with minimal effort.

The passenger elevator on the stacker crane „beams“ the service technician safely to the top when working at a height cannot be avoided.

Its use is recommended especially in deep-freeze warehouses or high-bay warehouses with reduced levels of oxygen in the atmosphere. And the convenient thing about our SCOTTY is that it can be easily retrofitted on most stacker cranes if necessary.

**LTW.AT**

**LTW Intralogistics GmbH** · Achstrasse 53 · 6922 Wolfurt · +43 (0) 5574 6829-0 · [office@LTW.at](mailto:office@LTW.at)