

Mobile/Web Hologram Technology with Patent



www.swebs.co.kr



- **Mobile/Web security hologram** **SWEBS** Development by SWEBS
Development genuine certification system by mobile phone and computer.
It works as strong security system combined with high security hologram and special printing technology.
- **Security Hologram** **SECUTECH**
Suggest most suitable hologram from basic to highest security level depending on client situation against the threat of forgery.
- **Security Seal** **Sealticker**
Supply security sealing label for sealing security documents and valuables and computer, mobile phone etc.

RMG co.,Ltd

PROTECT YOUR VALUABLE
BRAND AND COPYRIGHT FROM FORGERY.



RMG co.,Ltd

Protect Your Valuable
Brand and Copyright from Forgery



Tel: +82-070-4077-0769/ Fax: +82-(0)2-2179-8197

E-mail : sales@swebs.co.kr

Sales Office : A3002-1, Gunpo IT Valley, 17, Gosan-ro,
148beon-gil, Gunpo-si, Gyeonggi-do, Korea



Global Inspiration
GyeongGi-Do

Brand Introduction



SECUTECH Hologram supply most suitable security solution from level 1 to level 4 by checking client status for the threat of forgery.

With the optimal customizing security hologram, we recommend a suitable hologram with a variety of security technologies and designs, and you can protect your brand from forgery by creating your own hologram.

Differentiated Security Effect

Fresnel Mirror Lens



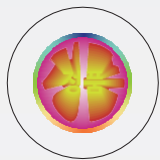
- Unique effects that see objects like convex lens.
- Impossible to implement with existing hologram production technology and equipment.
- Rare and High secure technology.



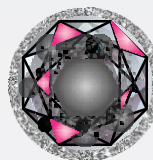
3D Stereogram

- Volume and Three dimensional effect.
- Produced through computer 3D modeling or real 3D modeling.
- Left to right Rotate effects by giving 15~20 frames.

Lens Shrink Expand



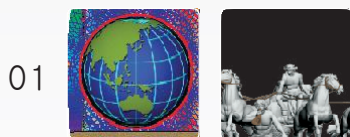
- The effect of expanding and shrinking the letters in the optical lens.
- High secure hologram technology.



Crystal & Diamond Effect

- Gorgeously shining and brilliant effect like diamond.
- High secure hologram technology.

Overt Security Features



3D (3D Effect)

- Volume and Three dimensional effect.
- Produced through computer 3D modeling or real 3D modeling.



Animation

- Dynamic movement as if a bird is flying.



High Resolution Guilloche Line

- Combining high-resolution fine lines enables dynamic visual effects.



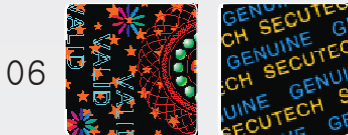
Shrink Expand

- The effect of the word SECUTECH is that it expands and shrinks.



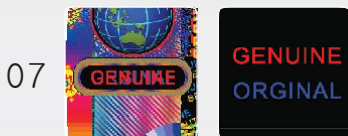
True Color Effect

- The effect of implementing colors that are unique to a picture or picture.



2D/3D Effect

- The effect of giving depth to the text or logo in the background to make it appear three-dimensional.



Two Channel Switch Effect

- Transition effect with two different Images alternating in the same position.



Three Channel Switch Effect

- Transition effect with three different Images alternating in the same position.



Lens Effect

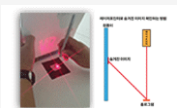
- The effect of creating small spherical lenses to differentiate visually.



Specific Angle View Effect

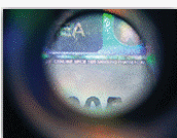
- instantaneous effects only on certain observation angles.

Covert Security Features



Laser Hidden

- When you shoot the laser pointer at a specific location on the hologram, hidden images appear in front.



Microtext

- Security technology inscribed fine texts on the hologram that are hard to see with the naked eye.
- It can be viewed under a microscope or magnifying glass.



Raster(Moire) effect

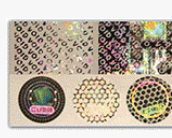
- Encode specific text on the hologram and it can't be seen with the naked eye.
- It can be viewed under dedicated decoding film.

Material Security Technology



Invisible UV Hidden

- Invisible UV hidden text can be visible under the UV light only.
It's engraved inside of material, not surface.



Tamper Evident

- Removing the hologram damages the hologram layer.
It's used for sealing the important things.
- Security technology that prevents reuse of hologram itself.



Custom Tamper Evident

- Security technology that leaves the trace when the hologram is removed and destroyed by the client's brand and company name.
(ex. SAMSUNG, LG, HYUNDAI..etc)

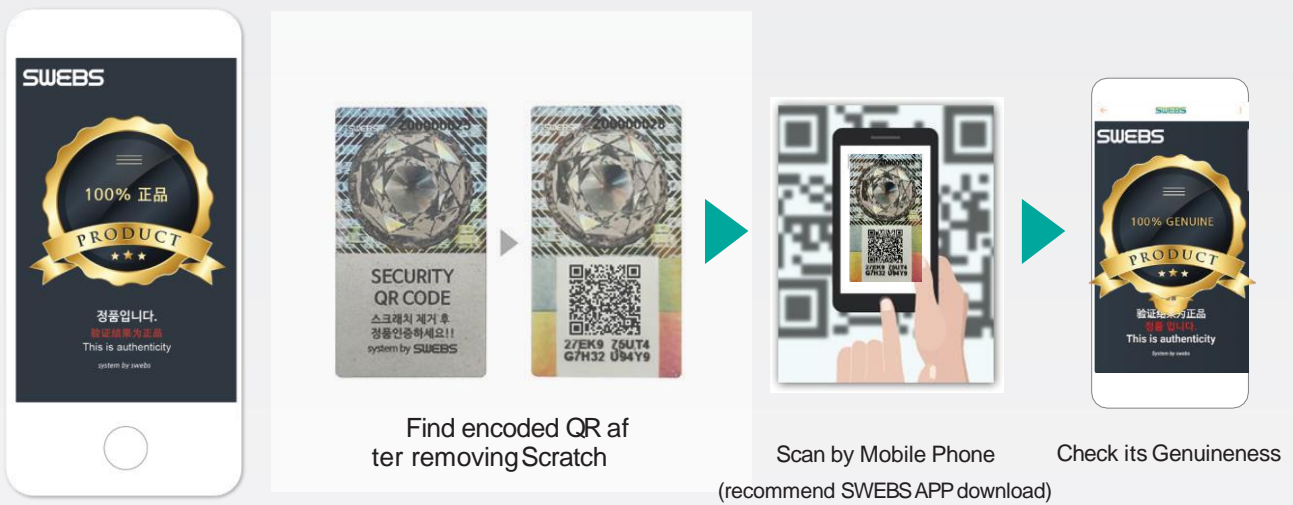
Brand Introduction

SWEBS is WEB&Mobile Authentication System.



Through the combination of differentiated hologram technology and mobile authentication system, in addition to authenticity checks, it can also be used as a means of various marketing. For example, new product promotions, customer inflows to brand homepage, Inducement to genuine purchasing site, event, distribution management, genuine registration, customer information collection, etc

SWEBS Authentication Process



WEB/MOBILE Authentication Hologram

Encrypted secure QR code

- The QRCode used for validation is a non-replicable QRcode generated by a self-developed encryption program.
- All SWEBS product come with encrypted QR code with different information. When a buyer authenticates, the data server confirms the authenticity in real time.



1:1 Matching System

- 1:1 match between label serial number and hidden verification code.
- Configure different information bases on serial number.
- Reverse tracking of each Verification code.
- Can be used for distribution management.

WEB/MOBILE Authentication Hologram



Base product Authentication pages

- Validation message: Validating genuine product at initial authentication.
- Non-genuine message: Confirming non-genuine product.



One-time Authentication is the principle

- After initial authentication, it will show :
 - Authentication status
 - Time stamp for initial authentication
 - Count for authentication
- Warning notice will show when authentication count exceeded specified numbers.



SWEBBS Authentication Page for Brands

- Each client's brands are offered an unique brand page for imprinting brands to customers and for marketing usages.
- The brand landing page can be revised in SWEBBS CMS System.



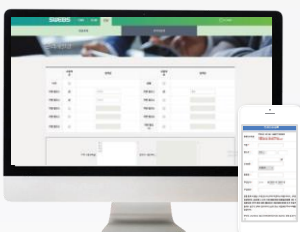
CMS (Contents Management System)

- Real-time genuine product authentication with meta information - country, time stamp, IP, geo-location and etc.
- * System also detects and show status of potential fake product and suspicious authentication activity status.



SCM (Supply Chain Management)

- Hologram sticker for each individual products packaging and carton packaging are offered as a set.
- Web and mobile app integrated to each other Check product distribution status.



CSS (Customer Support System for Warranty)

- Simple and easiest way for customers to register products for warranty.
- Replace paper manuals or product instructions.
- Easily manage warranty registration data for CRM.

Brand Introduction



Sealing + Sticker = SEALTICKER

A brand that specializes in sealing labels.

Attach the SEALTICKER to a surface where you need better security or sealing. When you remove it, the SEALTICKER will leave a pattern on the surface, allowing you to know whether that the product has been opened.

Label types include transfer labels that leaves a pattern on both the label AND the product, non-transfer labels that leaves a pattern on only the label, and 'position-type' SEALTICKERS that leave certain phrases on the surface.

Sealticker Type	Transfer Sealing Label	Non-Transfer Sealing Label	Position Sealing Label
Label Attachment			
Attachment Removal			

Transfer Sealing Label

This label has a mark (VOID) on the surface when it is attached to the place to be sealed and then removed.

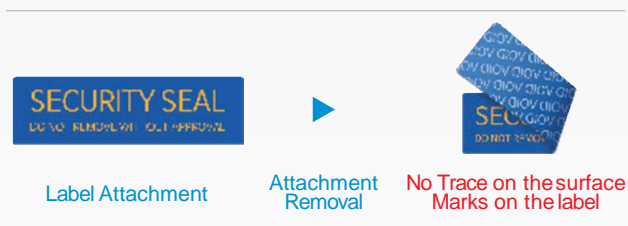
- FEATURES: Confirm whether the product is opened or not by checking a mark(VOID) on the surface after removing the label.
- APPLICATION: Product box seal, Warranty / AS label, Equipment & PC seal, etc.



Non-Transfer Sealing Label

This label leaves traces (VOID OPEN) not on the surface but on the label when the label is attached to the place to be sealed and then removed.

- FEATURES: Suitable product color when you do not want to leave mold release on the surface after label removal.
- COLOR: Black, Blue, Red, Transparent.
- APPLICATION: Product seal, no photography label, pc, mobile, etc.



Position Sealing Label

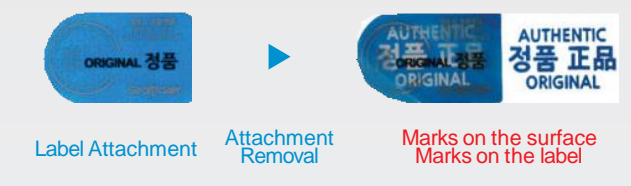
Labels that leave fixed text or logo (not patterns) when it is sealed and removed from the surface.

A product that allows the user to leave the logo of a company or a phrase on the surface.

- FEATURES: Marks remain in label and surface both.

You can mark your logo or text at a fixed location on this label.

This is very difficult technology. You can use both authentication label and sealing label.



Customized Sealticker Production Order

Customized production is available.

You can print your desired size, logo and phrase. It can be produced in small quantities (numbering printing is available)



(Please scan this QR for customised order)

Security Sealing Tape

It's a carton tape type for sealing.

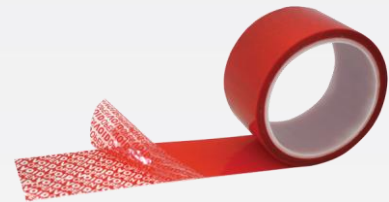
There are two kinds of tape as Transfer tape and Non-transfer tape.

You can choose one type according to sealing purpose.

All tapes can be produced by 100% customized.

Custom surface printing like your logo or brand, company name is available.

And customized hidden message is also available.



Tape Type Reference

Transfer Sealing Label



Non-Transfer Sealing Label

