



# ADDITIVE MANUFACTURING

## OUR PRECISION KNOWS NO LIMITS

[www.sbot.co.at](http://www.sbot.co.at)

**VELO** <sup>3D</sup>



**SCHOELLER  
BLECKMANN  
OILFIELD  
TECHNOLOGY**

# FIRST VELO3D SAPPHIRE XC PRINTER IN EUROPE



## REMARKABLE EXPANSION OF 3D PRINT CAPABILITIES FOR ALL BUSINESS AREAS WITH UNCOMPROMISING PRECISION AND EFFICIENCY WITH ONE OF THE LARGEST PRINT VOLUMES AVAILABLE TODAY.

We are a leading metal technology- and production company with decades of experience in manufacturing mission-critical components. As the first in Europe with a Sapphire XC in our machine park we are very proud to be able to offer remarkable capabilities for a wide range of business areas. We also provide conventional manufacturing capabilities like CNC milling and turning, heat treatment, material testing, and polishing for exact reworking of 3D components. This allows us to deliver ready-to-use components – we are your one stop shop! Benefit from our experience in manufacturing high tech components for the challenging oil and gas industry, our original main business area.

In our additive manufacturing competence center we take care of your 3D print project from the consulting, feasibility study, prototyping and series production. The new Sapphire XC printer is calibrated to print metal large-scale components in Inconel® 718 in size up to 600 mm in diameter and 550 mm in height.

We believe the advanced capabilities of the Sapphire XC will enable us to reach new heights of innovation and excellence in our manufacturing processes.

## NO LIMITS IN THE MANUFACTURE AND DESIGN OF FUNCTIONAL METAL COMPONENTS

- + Unparalleled geometric design freedom
- + Fast prototype and spare components production, easily accommodating last minute design changes
- + Complex geometries with small wall thicknesses and overhangs
- + Combination of individual components to form a complete component assembly (a reduction in the variety of components)
- + Lightweight construction through bionic design
- + Hybrid production – combining the strength of additive with that of our traditional CNC machining
- + Enabling the production of highly complex, mission-critical components
- + Inconel® 718 in size up to 600 mm in diameter and 550 mm in height

## DEPOWDERING-SYSTEM SOLUKON

Benefit from the 1A quality through precise powder residue removal and shorter processing times with our Solukon SFM-AT1000-S! In the short-swivel arm version it is a perfect match to our Velo3D Sapphire XC printer.

- + with a short swivel arm for optimized component handling
- + unlimited programmable two-axis rotation
- + Digital Factory Tool for process-tracking, #qualityassurance and #automation integration

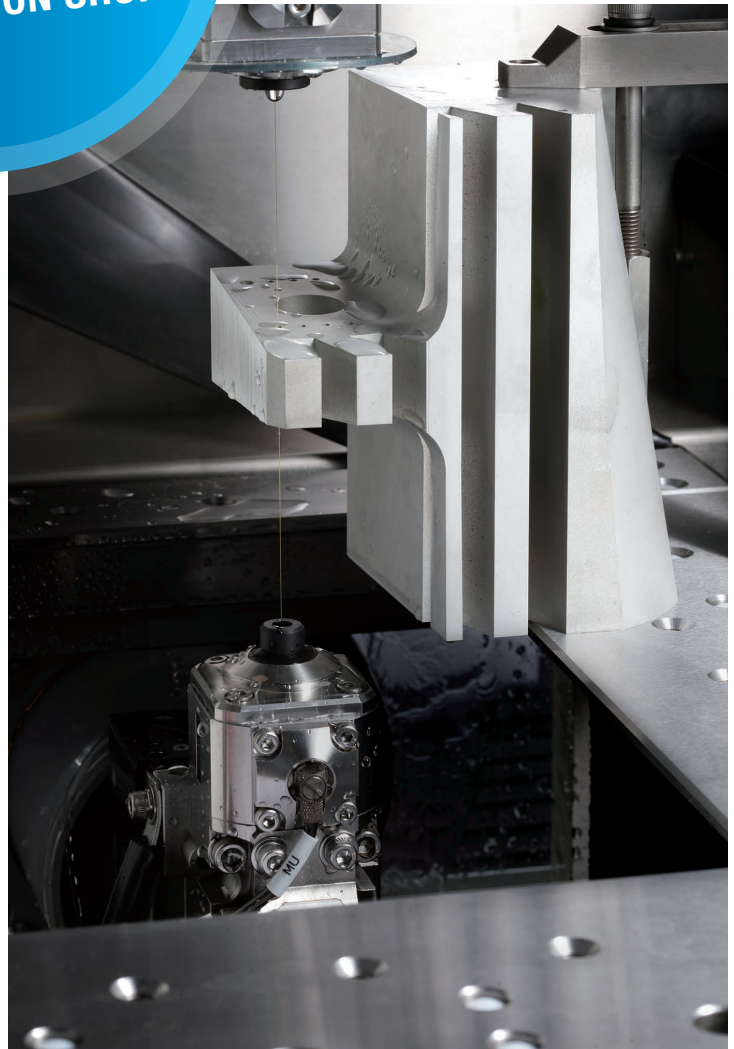


ENGINEERED  
FROM CONCEPT TO  
COMPLEX COMPONENT  
IN OUR ONE STOP  
PRODUCTION SHOP

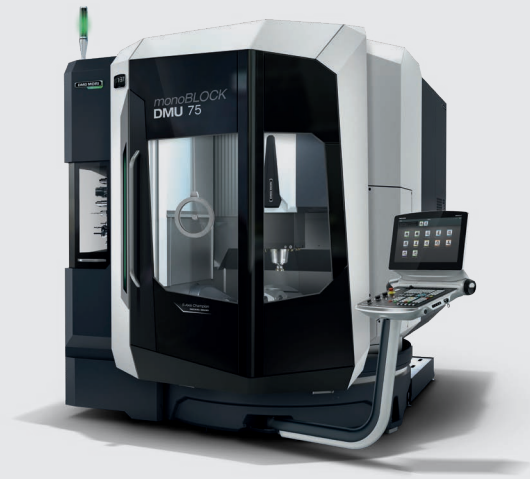


## WIRE CUT MACHINE - SODIK ALC600G

- + Precise separation from the printing plate up to a component diameter of 350 mm
- + accurate contours by CNC controlled five axis
- + especially for thin-walled and filigree components







### **MILLING MACHINE DMU 75 2<sup>nd</sup> GEN** (FIVE AXIS CNC-CONTROLLED)

- + exact fit in the two to three hundredths range
- + all-round surface treatments to reach required surface quality e.g for sealing surfaces
- + perfectly designed for post-processing of the 3D printed components of the Sapphire XC



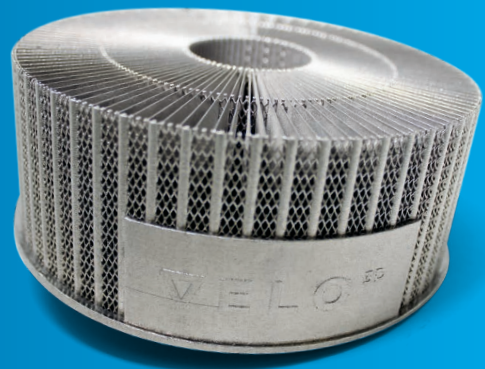
We are Velo3D's first and only Contract Manufacturer for the DACH region – so in addition to our excellent know-how and long experience in the production of high precision components, you will also benefit from the immense technical knowledge of Velo3D.

**Schoeller-Bleckmann**  
**Oilfield Technology GmbH**

Hauptstrasse 2  
2630 Ternitz / Austria  
phone office: +43 2630 315-0  
e-mail: dm@sbo.co.at



[www.sbot.co.at](http://www.sbot.co.at)



**VELO** 3D



**SCHOELLER  
BLECKMANN**  
OILFIELD  
TECHNOLOGY