

THE **FLOAT**LAND

Get on board
and enjoy your private island



THE FLOATLAND

OVERVIEW



Get on board and enjoy your unique boat !!!

The FLOATLAND is an innovation that offers privacy, serenity and relaxation on the water in safety, far away from the crowded and tumultuous beaches.

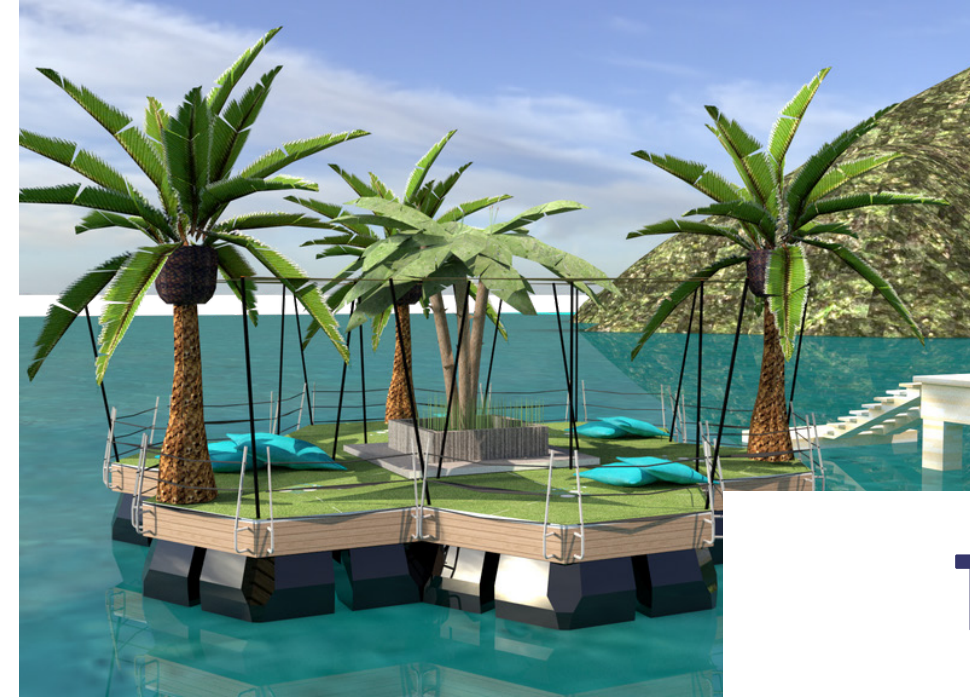
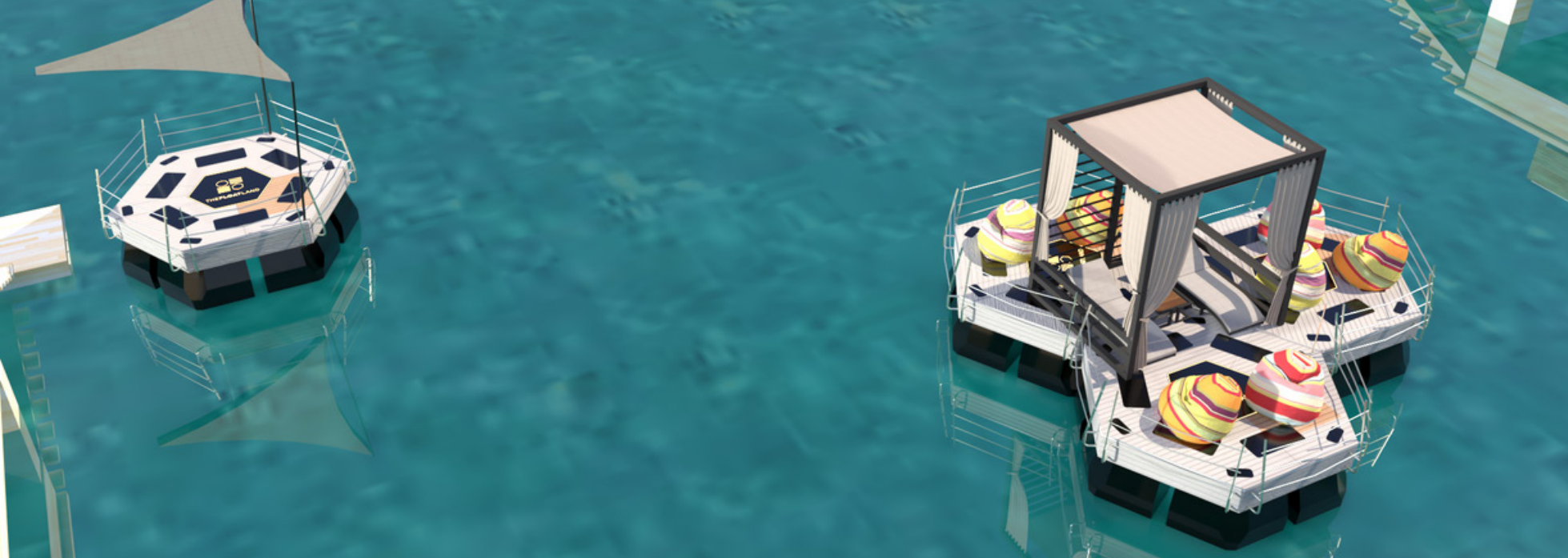
The 7 m² stable floating land is equipped with an electric motor with i-Pilot GPS Trolling System. I-Pilot uses GPS to set Spot-Locks, record paths, control speed/ steering, and more. It makes floating land positioning and control automatic. It is very easy to use and does not require experience or a boating license.

The combination of design and technology enables the user to enjoy his glide across the water, to stop in a private spot at any time , enjoy swimming and sunbathing without sand on his feet.

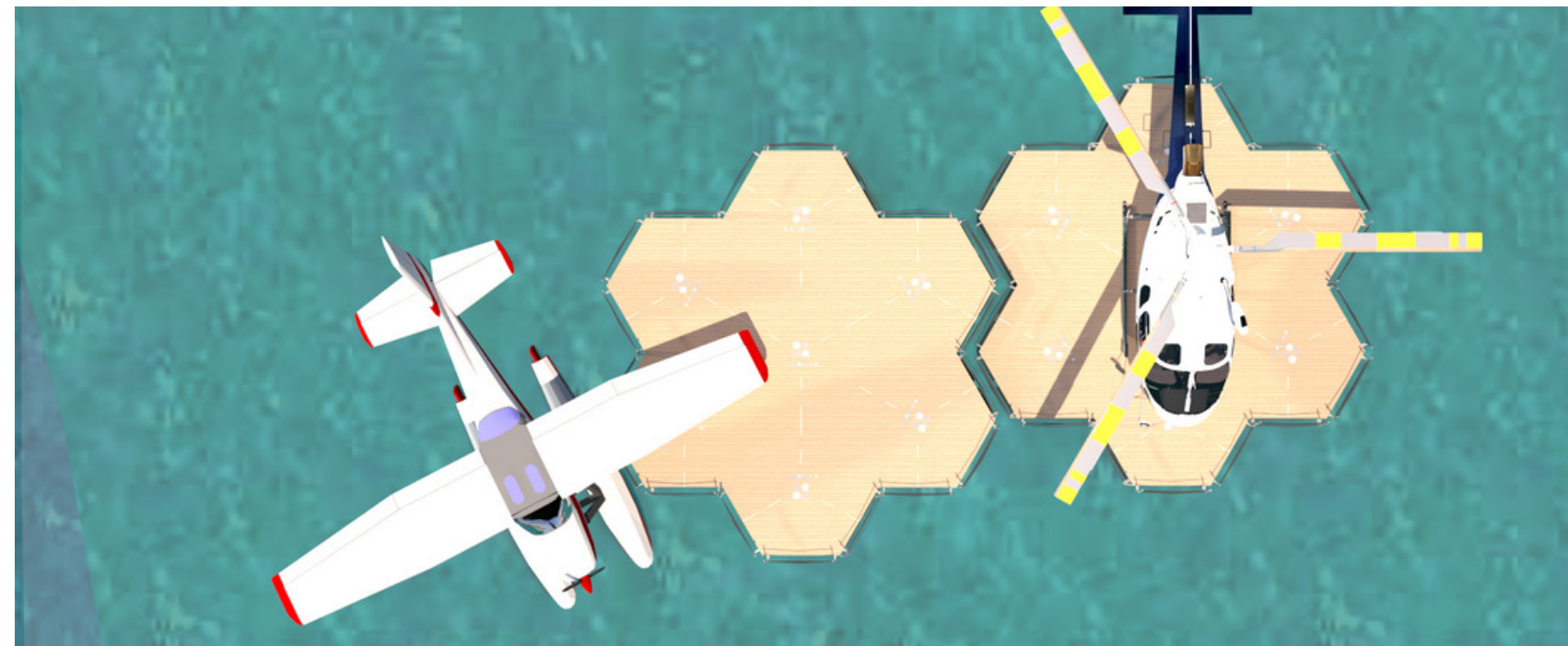
Its stability allows you to enjoy your morning workout, yoga and even capoeira under clear skies on the water. The hexagonal shape is its advantage as it makes the floatland suitable for many uses.

The floatland can be placed on calm waters and is especially suited to waterfront resorts, lagoons, limpid coves, and rocky inlets. The floatland in the no electric motor format either one only or connecting several together is the solution to shortage of space along beaches and beachless waterfronts as it creates space for swimmers to stay .





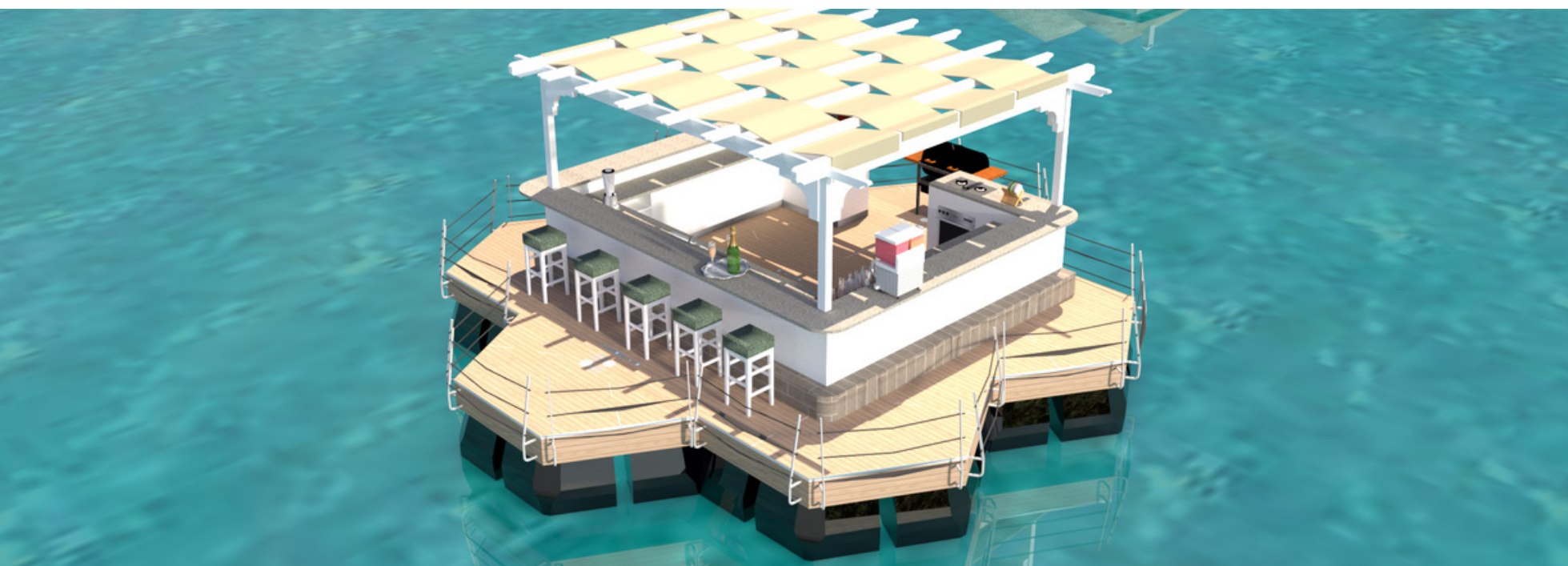
THE ADVANTAGE



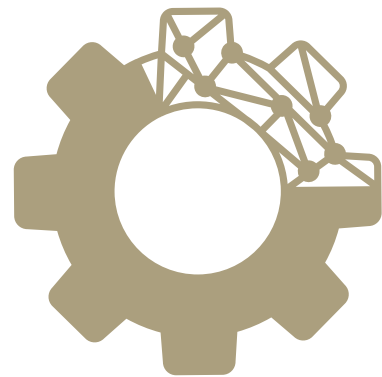
THEFLOATLAND's hexagonal shape enables multiple connections (cellular connection) without the existence of gaps, for the creation of large floating surfaces ($n \times 7,00\text{m}^2$), (where n is the number of individuals) for extra value services to more than 4 people and events on the water.

The connection of several non-electric ones together creates a floating island of variable size anchored and easily movable suitable for accommodating many people while enjoying the different uses of the boat.

From individual to multiple connections, the stability and the safety of THEFLOATLAND remains the same.



SPECIFICATIONS



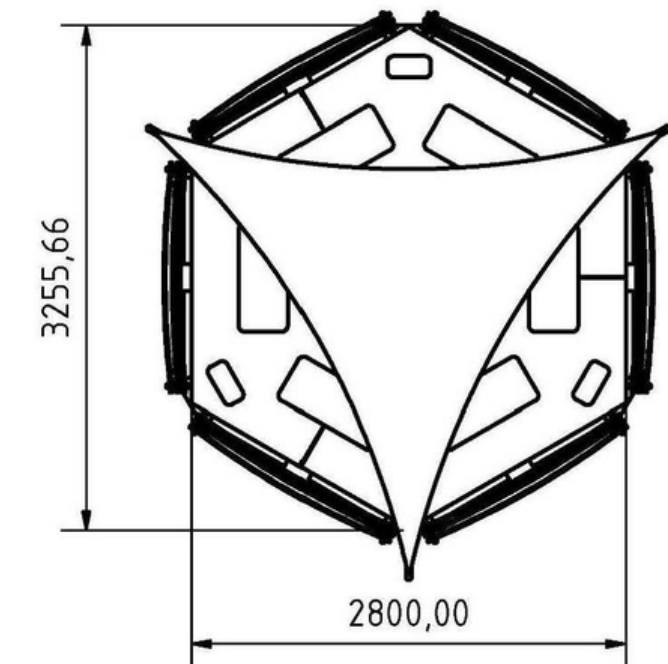
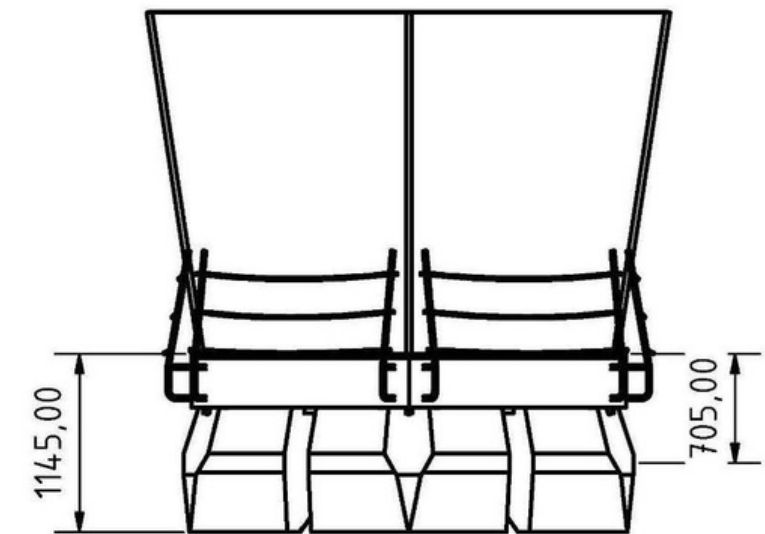
BASIC EDITION

- ✓ Compact hull (polypropylene with 6-piece polyurethane filling)
- ✓ Stainless steel internal hull (6 pieces) connection
- ✓ Deck base
- ✓ Teak deck surface
- ✓ Removable inox railings , 70cm height perimeter
- ✓ Two stairs
- ✓ Led type lights
- ✓ Anchor
- ✓ Electric motor with i-Pilot GPS Trolling System (2hp)
- ✓ Storage space for power supply (batteries)
- ✓ Two deep-discharge batteries
- ✓ Battery charger
- ✓ Safety equipment
- ✓ Night safety light
- ✓ Walkie talkie.

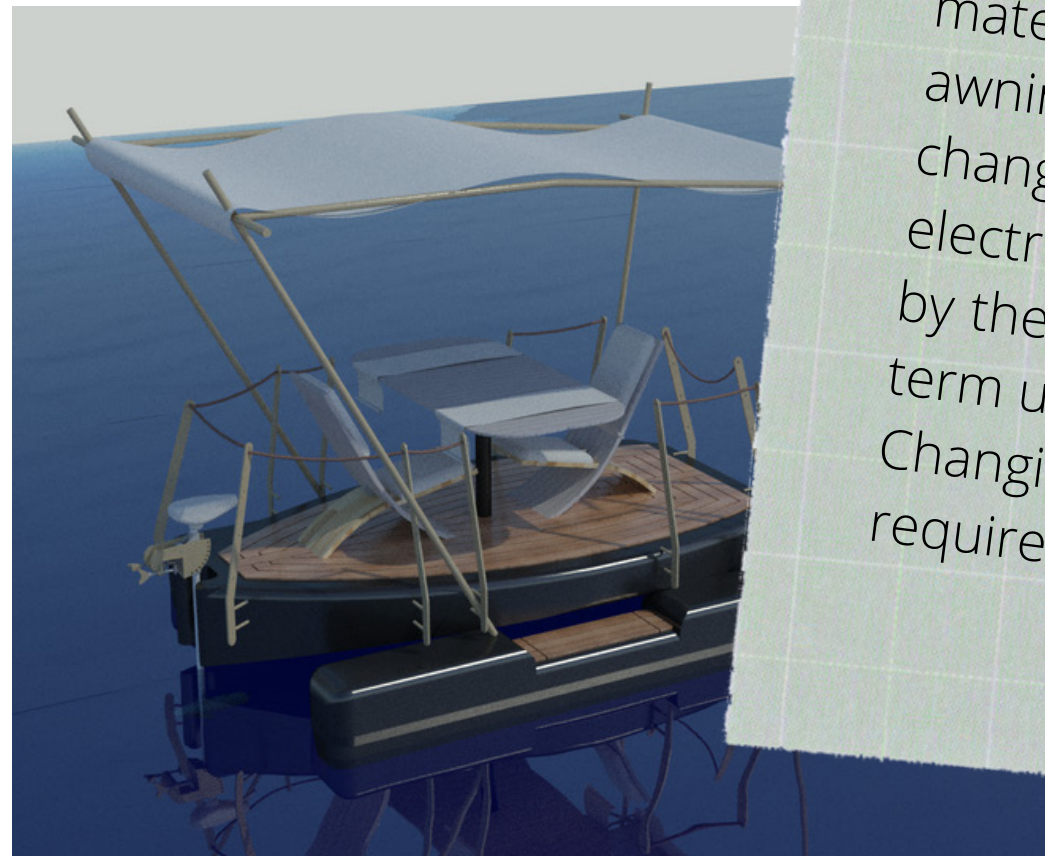
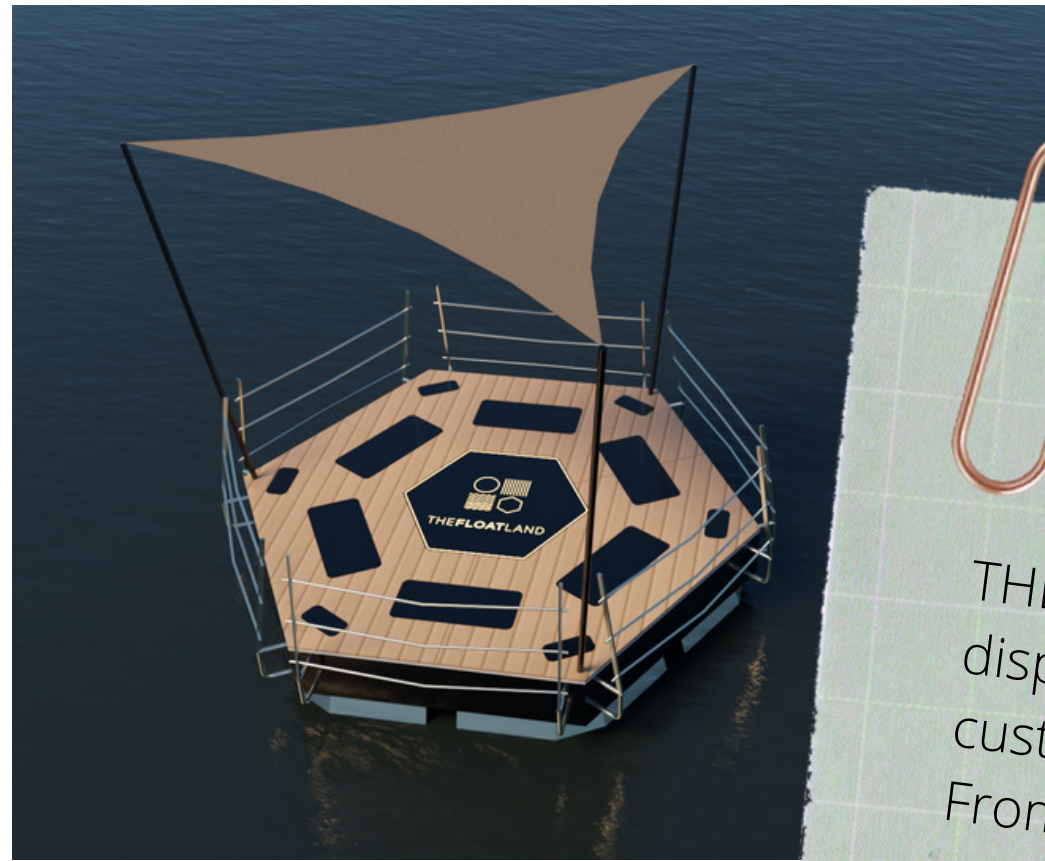
EXTRAS

- ✓ Folding quadrant sunshade or gazebo-type awning
- ✓ Two mattresses (marine leatherette) or two beach poufs
- ✓ Circular table with a diameter of 90-120 cm
- ✓ Reclining chairs (2-4 in number)
- ✓ Deep-discharge batteries (the number of batteries depends on the need to extend the electrification time)
- ✓ Multi-option self-adhesive vinyl for changing the appearance of the hull
- ✓ Customized materials

**The Float Land can be sold without an electric motor and remain anchored.*



CUSTOM IZABLE



Contact us for
further
information!

THEFLOATLAND team is at your disposal to create your own customized version. From changing the hull (color, material), deck & railings material, awning type and equipment to changing the hull size and the electronics. Energy is resurrected by the use of solar-panels for long-term use. Changing the size and design requires further stability research.

The next step in vacation evolution:

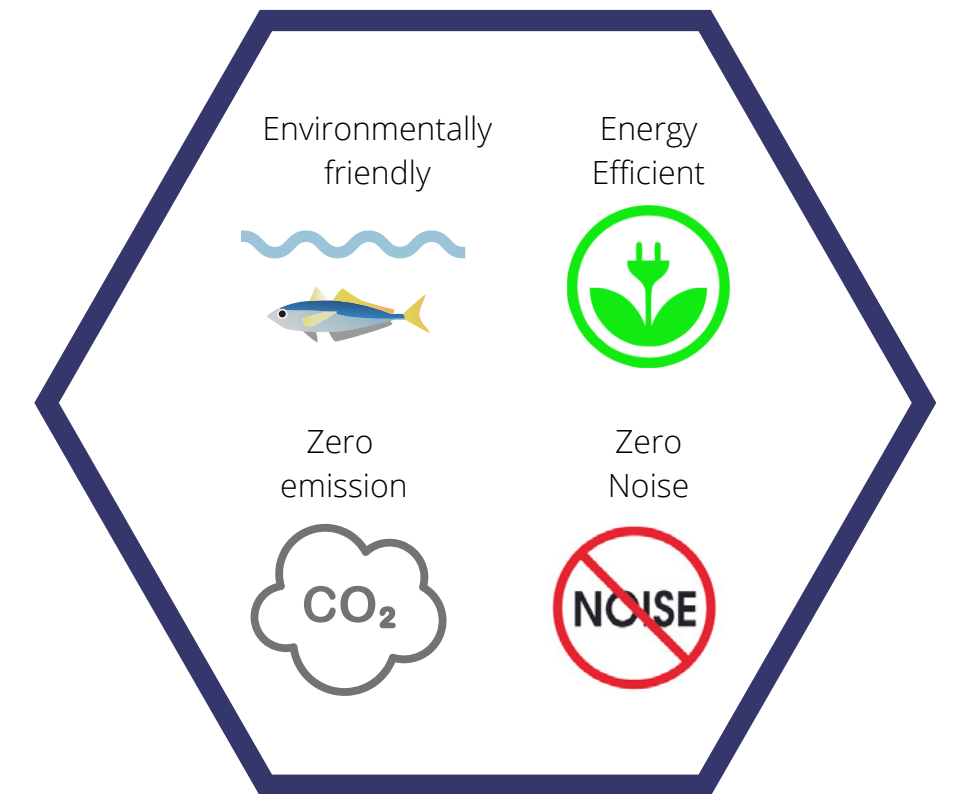
THEFLOATLAND's team understands the challenges that tourism industry is facing from the facilities provision to extra value services. Tourists are increasingly choosing the waterfront resorts to take a break from the daily worries in a situation with a different mentality, taking away the stress and relaxing away from the crowded cities. The need for isolation and tranquility has increased dramatically due to the heavy workload faced by people worldwide.

THEFLOATLAND has revolutionized the industry giving the waterfront resort client the option to choose between the fun and publicity of the bar and beach or the privacy, tranquility and harmony of the water combining the luxury of the hotel, the stability of the land, technology and innovation.

Our Values-Our Goals:

Innovation means evolution in THEFLOATLAND's team minds. Evolution not only in technology but in quality of life too. This is the reason that we designed and produced a floating water land environmentally friendly, electro mobile with no emissions and noise production. 71% of our planet is covered by water and we should keep it clean. Contact with water enhances well-being. The sound of the waves and staying in or on the water creates a sense of relaxation and helps our mental health. This is why the sea, lakes, rivers and even other structures with or on water have an impact on emotions and improve our mood. Our goals have multiple benefits. First, we aim to provide the user with a comfortable and a safe relaxing means of recreation on the water.

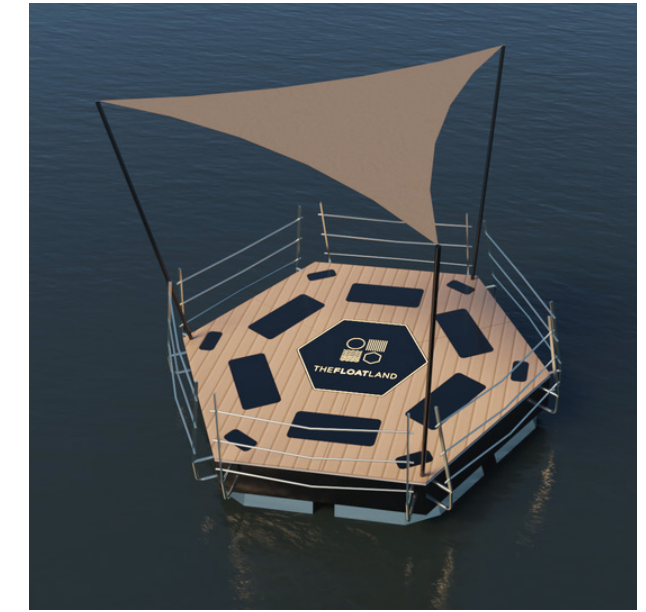
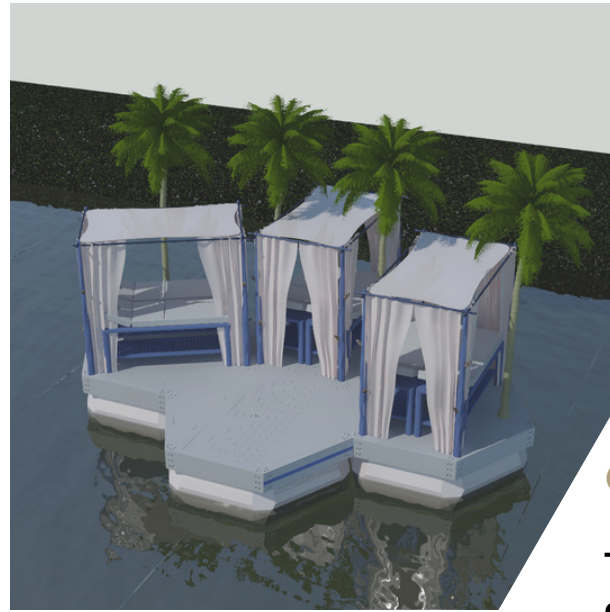
Also, we would like to note that to replace fixed wooden or plastic anchored unattractive platforms, unable to create floating sizable space (m²) of events and services in the middle of a bay or lake and finally to provide solutions to problems of energy, lifeguarding, logistics, etc. We can find a solution to any problems that you believe may occur.



The hexagonal shaped THEFLOATLAND holds an industrial design registration by the EUIPO (Intellectual Property Office of the European Union) with registration number 005841095-0001.

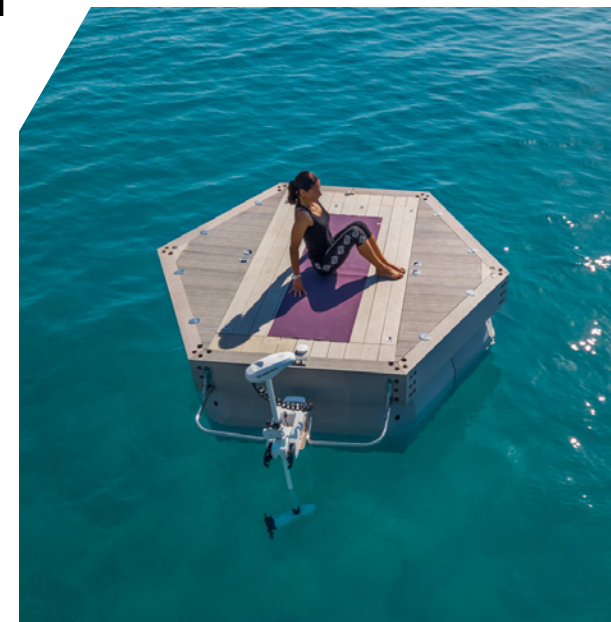
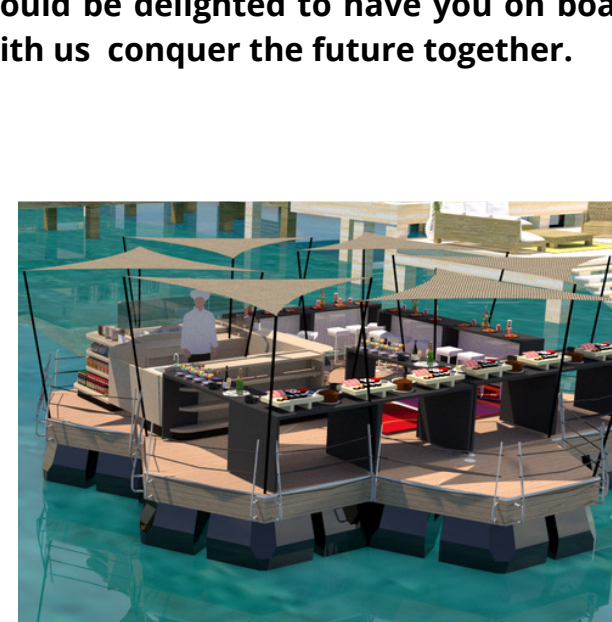
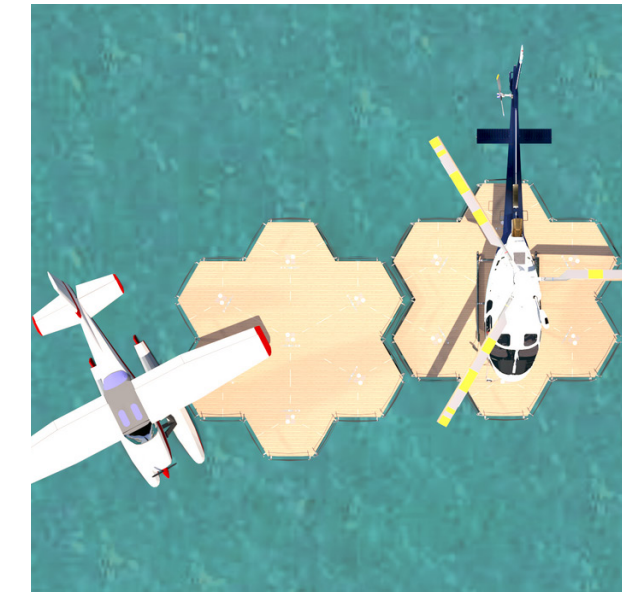
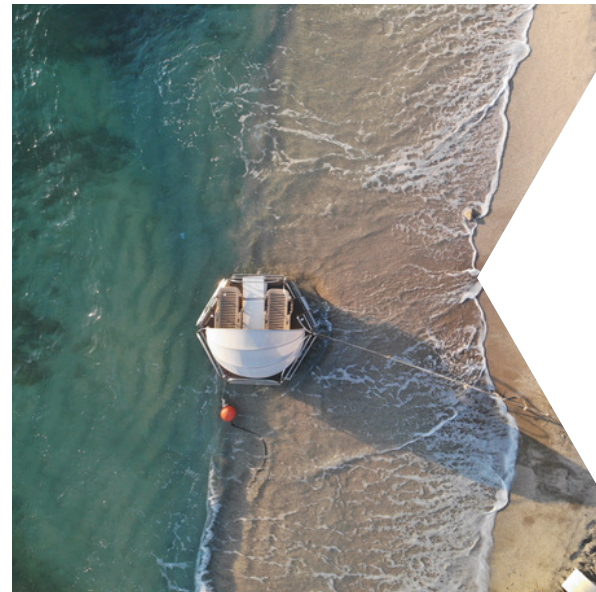
MODELS USES

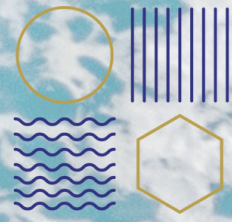
We are at your disposal to discuss in detail which THEFLOATLAND would be suitable for your business.



Conquer the future together:

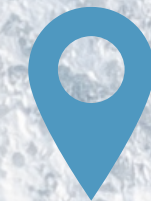
THEFLOATLAND's design team is ready to evolve the stability of the float adding an environmentally friendly technology and to develop new floats that will revolutionize many areas such as : providing large amounts of energy, using solar panels mounted on THEFLOATLANDS which can all be connected, providing a means of recreation for people also with disabilities, as well as creating a landing surface for helicopters or disembarking customers after landing seaplanes, etc. We are looking for investors in our concepts If this is of interest to you we would be delighted to have you on board with us conquer the future together.





THE **FLOATLAND**

**WATCH ON
YOUTUBE:**



CONTACT US

(+30) 697 8 334 702

Greece

info@thefloatland.com

<http://www.thefloatland.com>



thefloatland