

Trinmak Makina Mühendislik ve Bilişim Teknolojileri
Sanayi ve Dış Ticaret A.Ş

WHO WE ARE ?

TRINMAK's engineering expertise includes traditional disciplines, architectural, civil, electrical, mechanical and structural engineering, as well as process and mechanical design for your needs.

“

TRINMAK provides full range of design and engineering, procurement, in-house welded fabrication, modularization, construction, commissioning and start-up, operation , automation, and project management services.

Our company has ISO 9001:2015 quality system certificate and all our stages from design to delivery are inspected and followed according to advanced quality understanding.



PRODUCTION FACILITIES

We are ready to serve you with a total facility area of 3000 m2 with experienced staff and our advanced technology production parks.



HEAD OFFICE

We are pleased to welcome you and organize our meetings at our Head Office located in Kocaeli/Kartepe DEDEMAN Bureau Residence.





MATERIAL HANDLING AND WELDED FABRICATION

Machinery and systems designed for all your special needs.

01



CONVEYOR & SPECIAL DESIGN MACHINERY

System solutions specific to your serial production, assembly and transportation needs.

02



STEEL CONSTRUCTIONS & ARCHITECTURE

TRINMAK provides construction project management services using proven Technologies.

03



PROJECT SERVICES

Licensable construction project services according to current Steel Structure and Earthquake regulations.

04



MACHINING MANUFACTURING & PRESSED PARTS

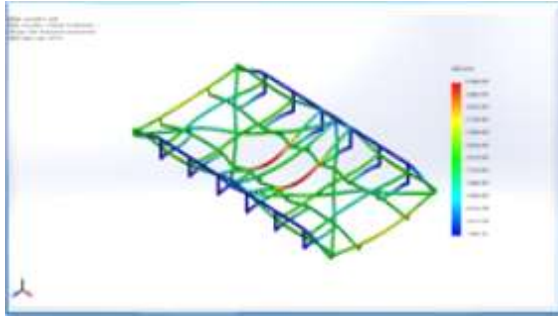
Quick solutions for all your spare part needs with our CNC turning, milling and hydraulic & eccentric press park.

05



MATERIAL HANDLING > AND WELDED FABRICATION

01



- **Trinmak**, provides particularly large manufacturing and heavy machining services in all related industries. It serves as a first-class industrial manufacturer with its uncompromising high security, integrity, reliability and project execution awareness.



- We are proud to increase the efficiency of the businesses we serve by using the production management systems we have developed, with our technical team who are experts in their fields and equipped with the most up-to-date information.

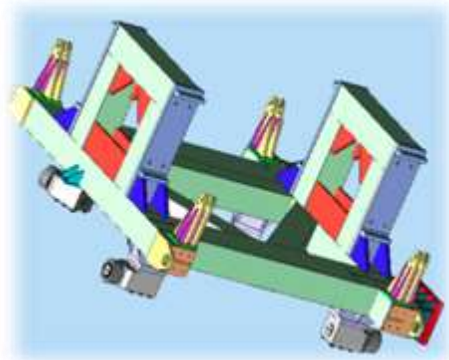


MATERIAL HANDLING > AND WELDED FABRICATION

01



PROJECT EXAMPLES





**MATERIAL HANDLING
> AND WELDED
FABRICATION**

01

PROJECT EXAMPLES





MATERIAL HANDLING
> AND WELDED
FABRICATION

01

PROJECT EXAMPLES

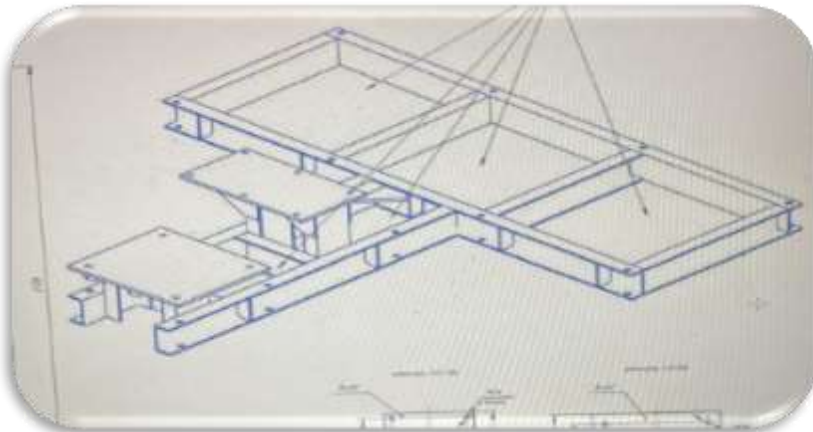




**MATERIAL HANDLING
> AND WELDED
FABRICATION**

01

PROJECT EXAMPLES

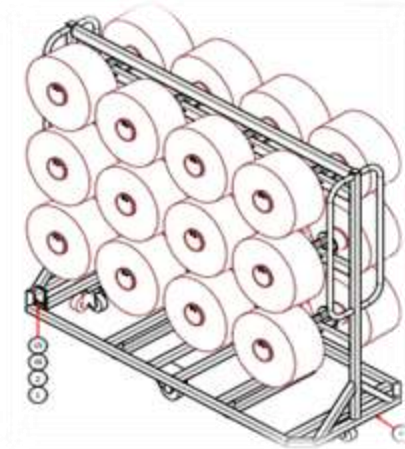
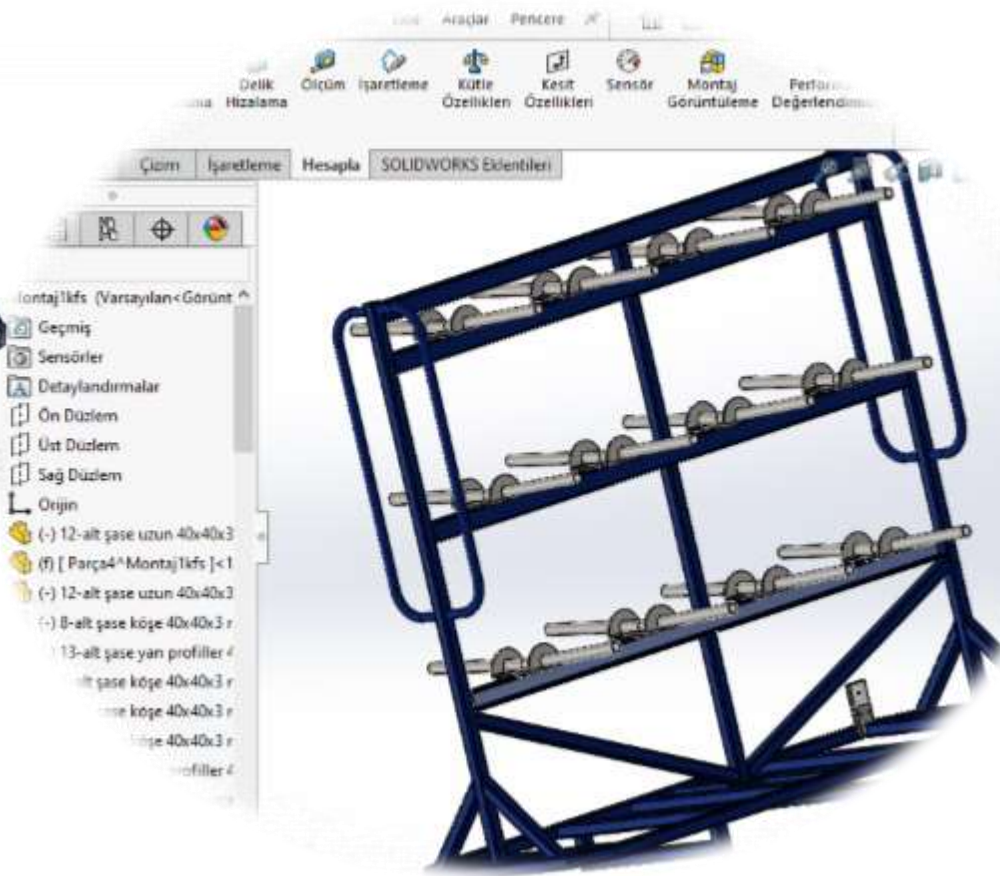
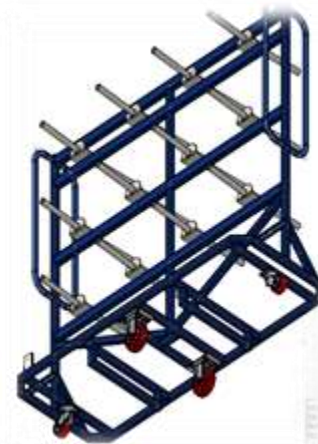




MATERIAL HANDLING > AND WELDED FABRICATION

01

PROJECT EXAMPLES



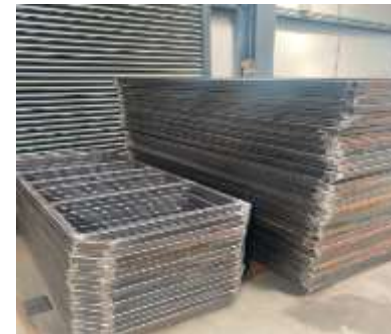


**MATERIAL HANDLING
> AND WELDED
FABRICATION**

01



PROJECT EXAMPLES





MATERIAL HANDLING
> AND WELDED
FABRICATION

01



PROJECT EXAMPLES



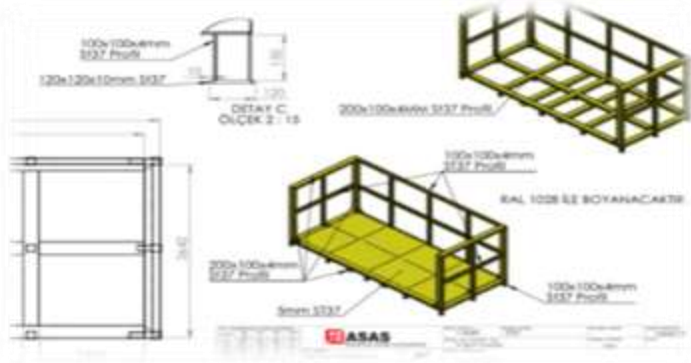


MATERIAL HANDLING > AND WELDED FABRICATION

01

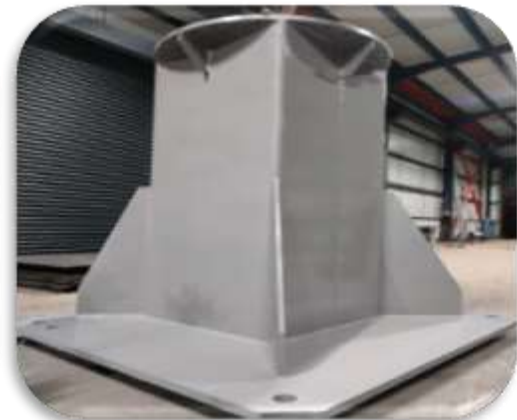
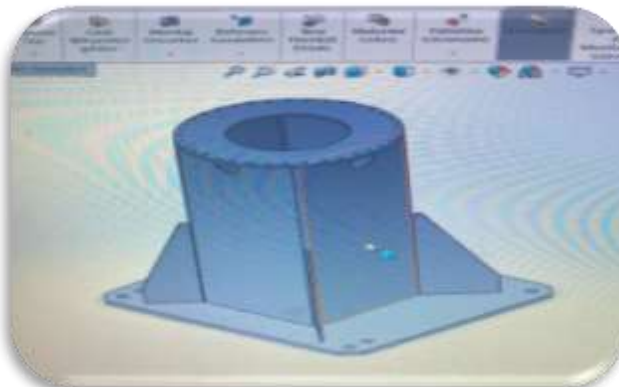
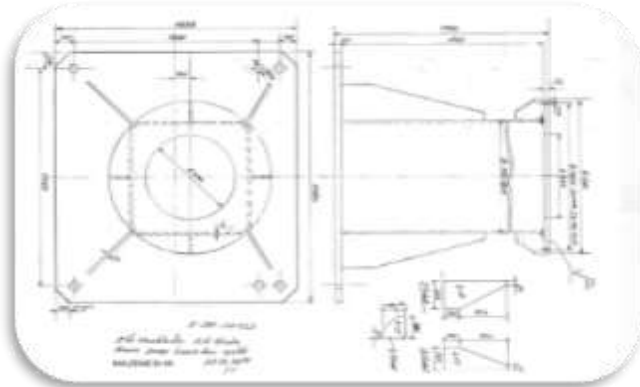


PROJECT EXAMPLES





PROJECT EXAMPLES



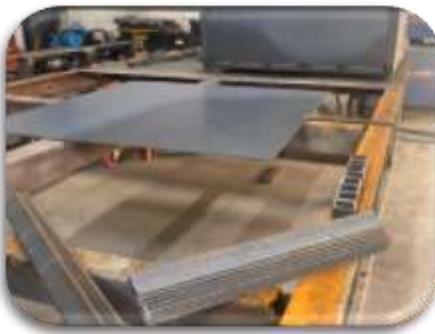
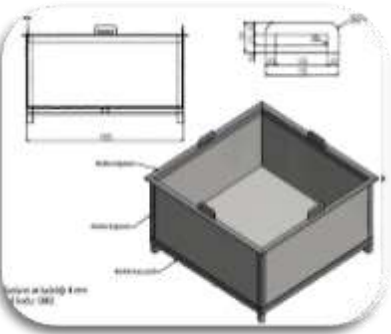
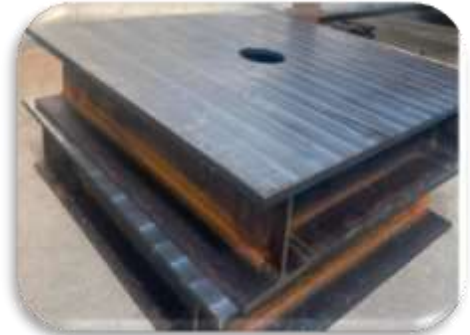
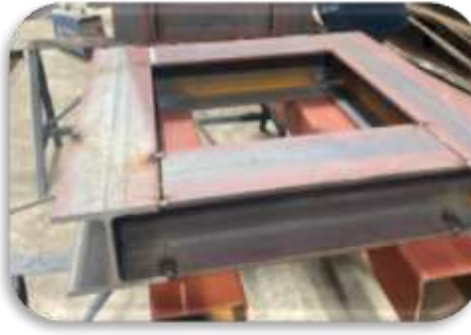
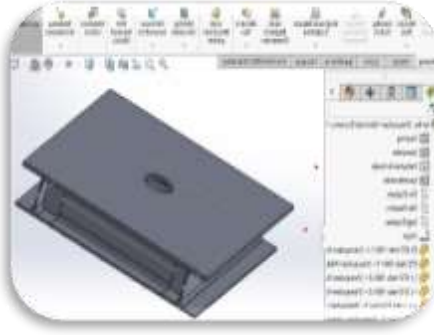
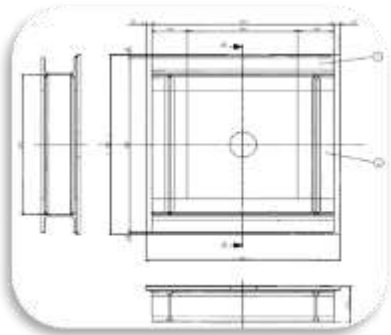


MATERIAL HANDLING > AND WELDED FABRICATION

01



PROJECT EXAMPLES



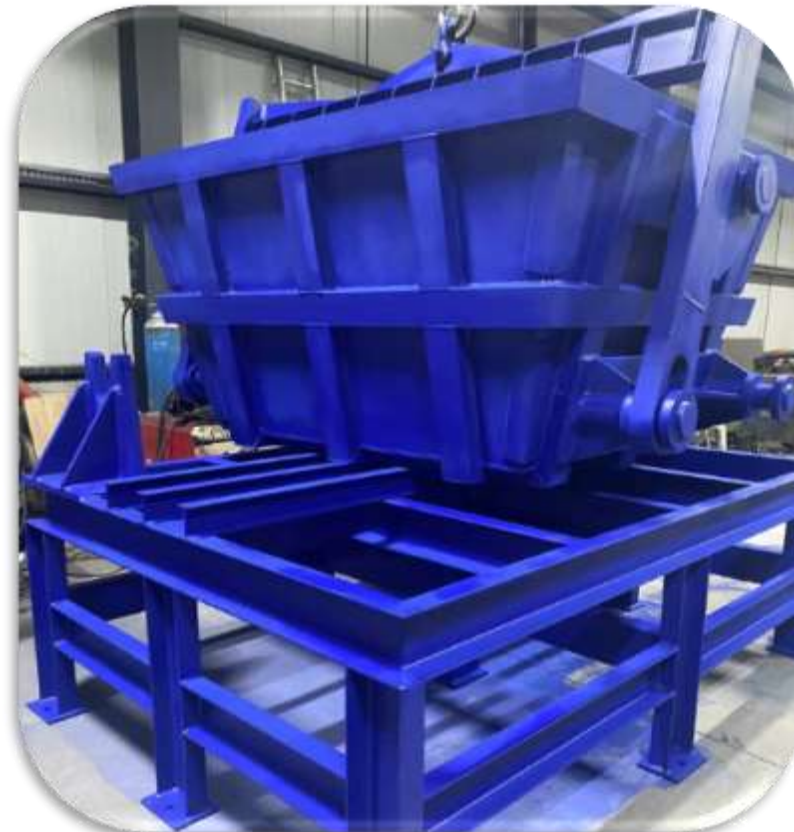


MATERIAL HANDLING
> AND WELDED
FABRICATION

01



PROJECT EXAMPLES





MATERIAL HANDLING > AND WELDED FABRICATION

01

PROJECT EXAMPLES



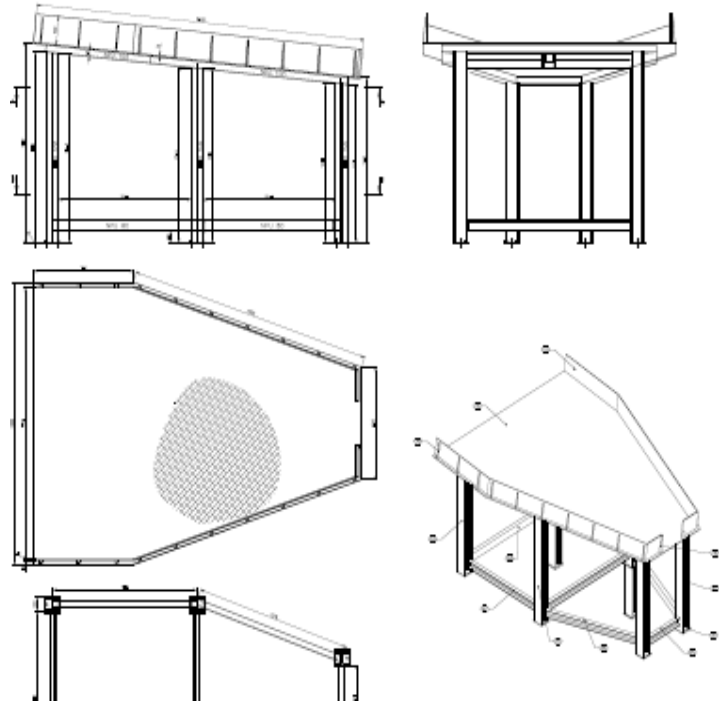


PROJECT EXAMPLES





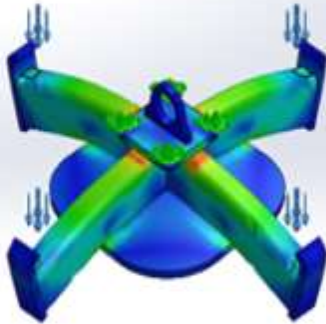
PROJECT EXAMPLES



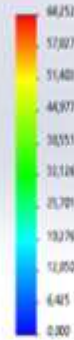


PROJECT EXAMPLES

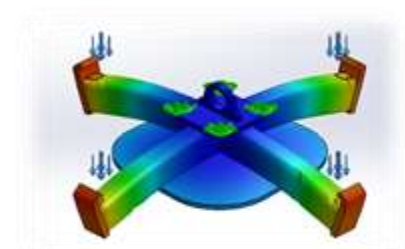
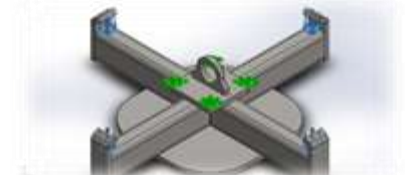
Model adı: KESİTİP-001_001
Yüklem: Statik (Z-Değişim)
Yüklem Tipi: Statik (Yüklem) (Statik)
Yüklem Yönlü: Statik (Yüklem)



von Mises (N/mm²) (MPa)



→ Akma mukabemeti: 275.000

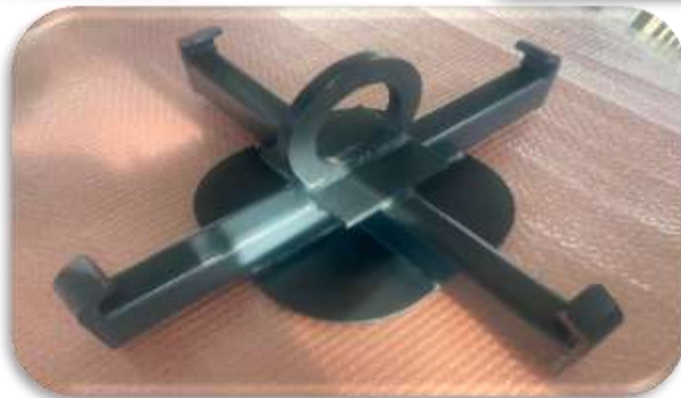




**MATERIAL HANDLING
> AND WELDED
FABRICATION**

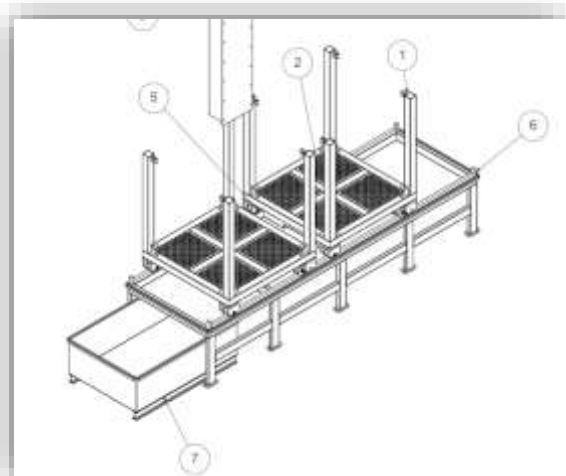
01

PROJECT EXAMPLES





PROJECT EXAMPLES





PROJECT EXAMPLES





PROJECT EXAMPLES





MATERIAL HANDLING
> AND WELDED
FABRICATION

01

PROJECT EXAMPLES





**MATERIAL HANDLING
> AND WELDED
FABRICATION**

01

PROJECT EXAMPLES





Conveyor
Systems

Z

Belt
Conveyor

X

Gravity
Roller
Conveyor

t

Chain
Conveyor

r

Slat
Conveyors

08

01

07

02

06

03

05

04

Overhead hand
push beam
trolley systems

u

Telescopic
Conveyor

T

Vibrating
Conveyor

c

Motorized
Overhead
Conveyor

g



CONVEYOR & SPECIAL DESIGN MACHINERY

02



- We consider your process as a whole and plan the conveyor technology for the entire plant together with you. We provide all the mechanical and electrical engineering, as well as the complete mechanical and electrical manufacturing.
- From chain conveyors and roller conveyors to belt conveyors and fully customised handling systems, we supply everything from one source.
- Trinmak provides PLC software and automation services to its customers with its reliable staff. By working with companies such as Allen Bradley, Schneider Electric, Siemens, we serve our customers with confidence.

We Plan

1

We Design

2

We
Manufacture

3

We Install

4



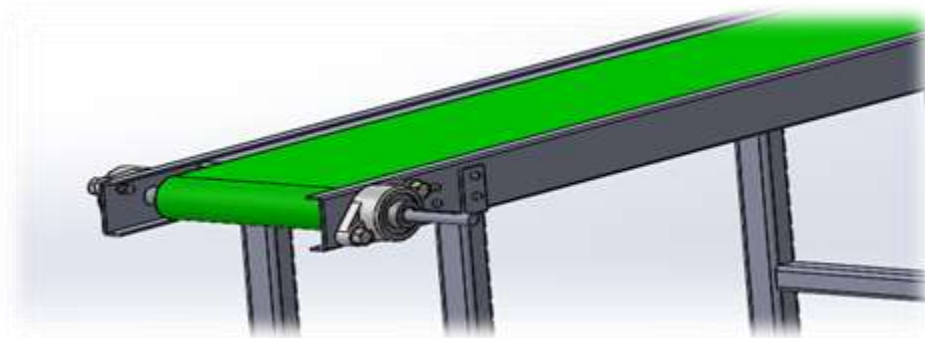
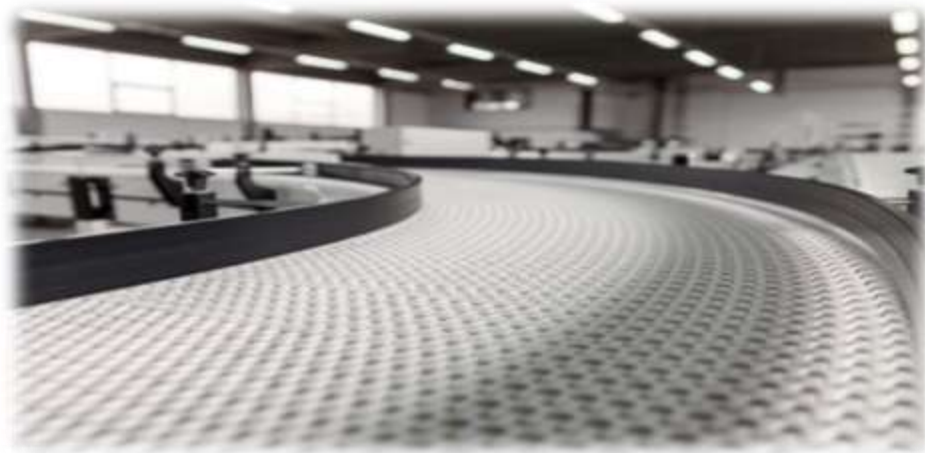
WHAT WE OFFER

New System Design

Existing System Addition

Continuous Improvement

Data Analytics



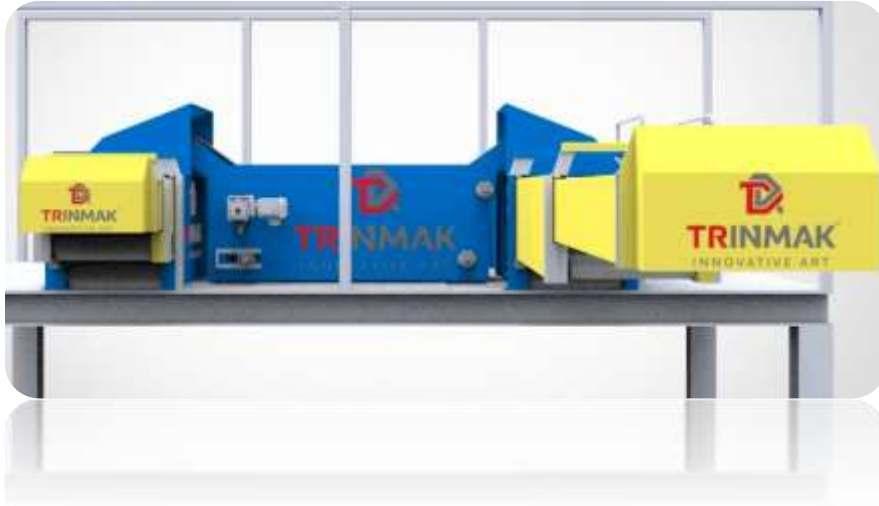


>

CONVEYOR & SPECIAL DESIGN MACHINERY

02

PROJECT EXAMPLES



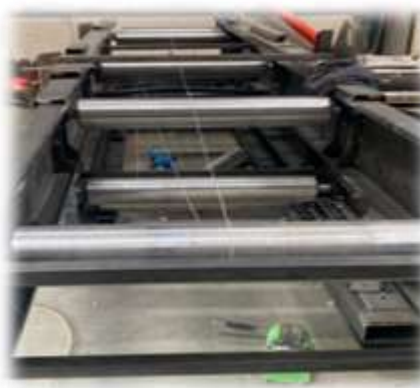
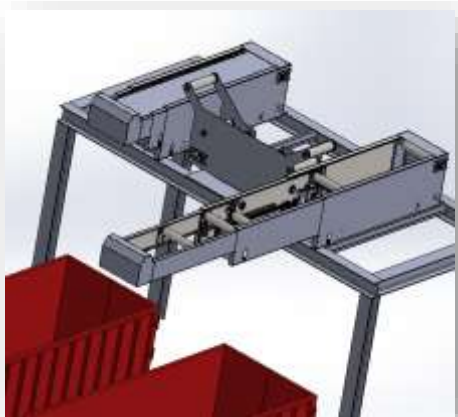


>

CONVEYOR & SPECIAL DESIGN MACHINERY

02

PROJECT EXAMPLES



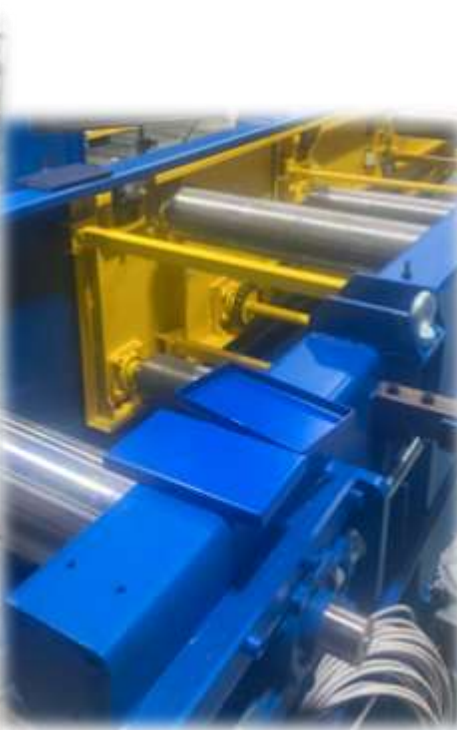


>

CONVEYOR & SPECIAL DESIGN MACHINERY

02

PROJECT EXAMPLES





>

CONVEYOR & SPECIAL DESIGN MACHINERY

02

PROJECT EXAMPLES



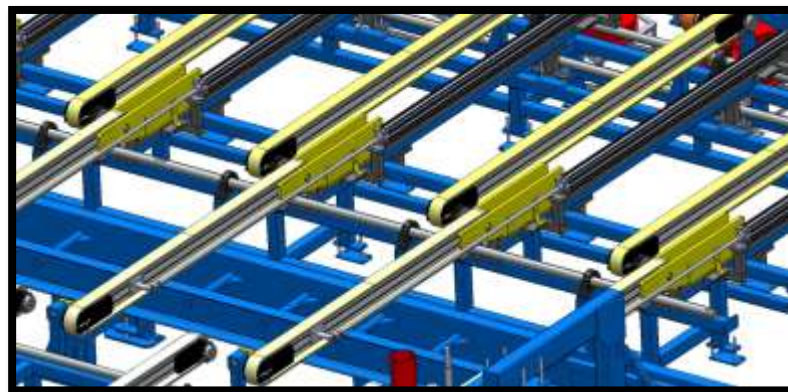
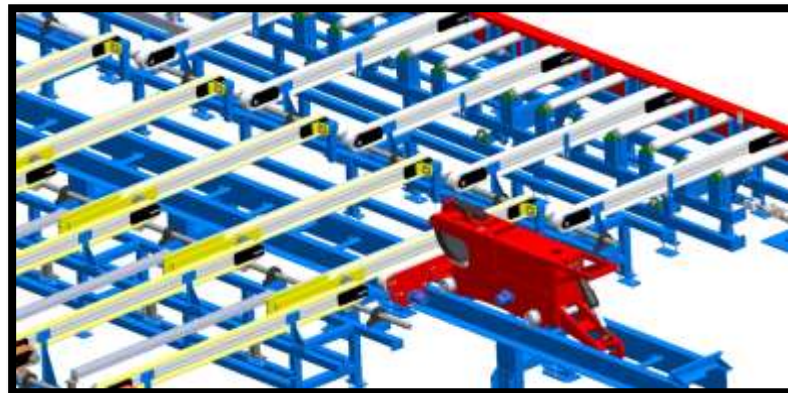


>

CONVEYOR & SPECIAL DESIGN MACHINERY

02

PROJECT EXAMPLES





>

CONVEYOR & SPECIAL DESIGN MACHINERY

02

PROJECT EXAMPLES





>

CONVEYOR & SPECIAL DESIGN MACHINERY

02

PROJECT EXAMPLES





>

CONVEYOR & SPECIAL DESIGN MACHINERY

02

PROJECT EXAMPLES

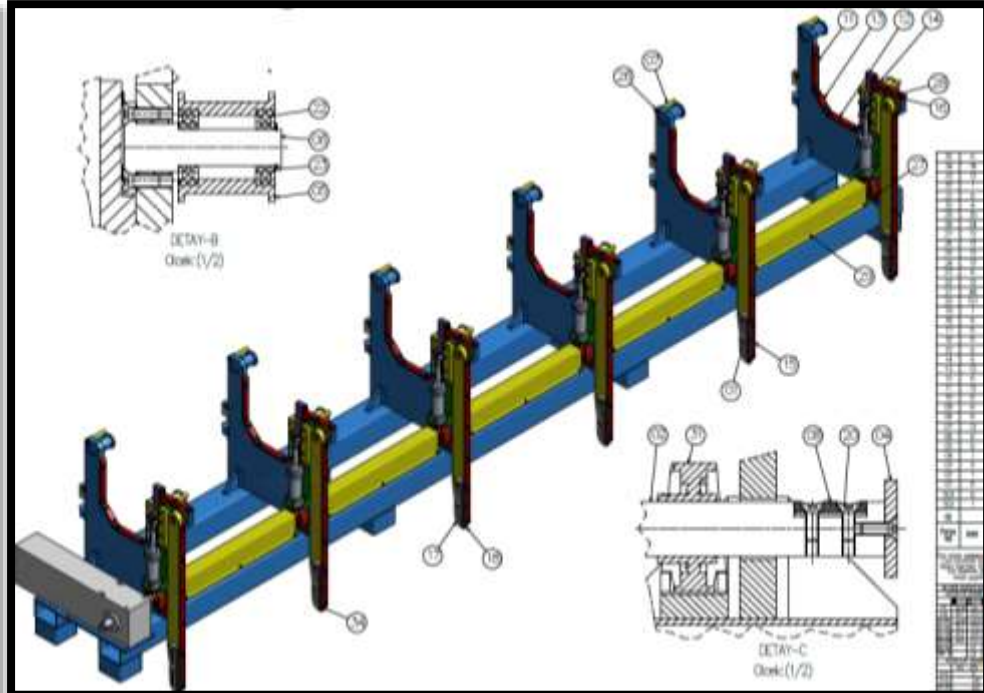
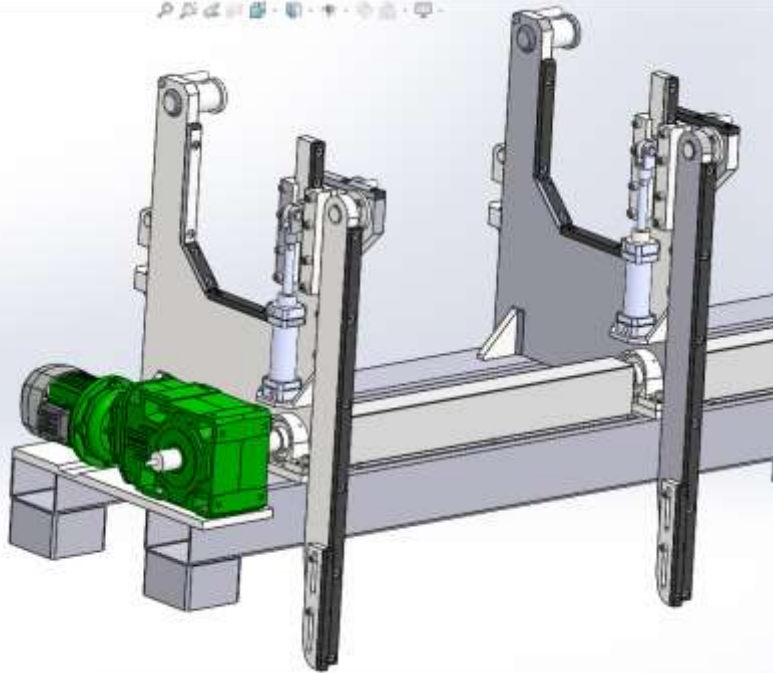




CONVEYOR & SPECIAL DESIGN MACHINERY

02

PROJECT EXAMPLES





CONVEYOR & SPECIAL DESIGN MACHINERY

02

PROJECT EXAMPLES

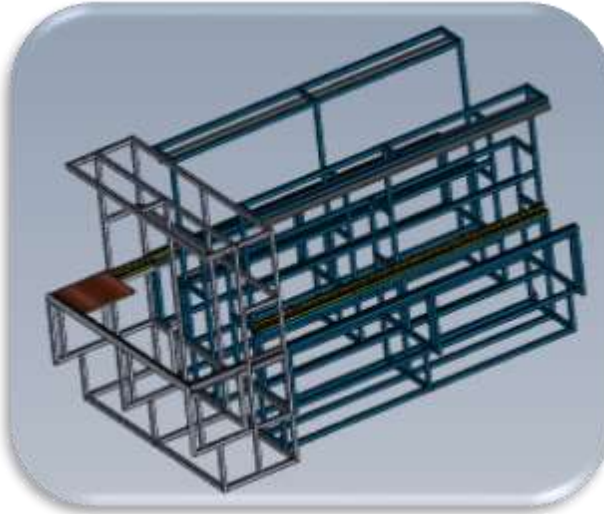




CONVEYOR & SPECIAL DESIGN MACHINERY

02

PROJECT EXAMPLES



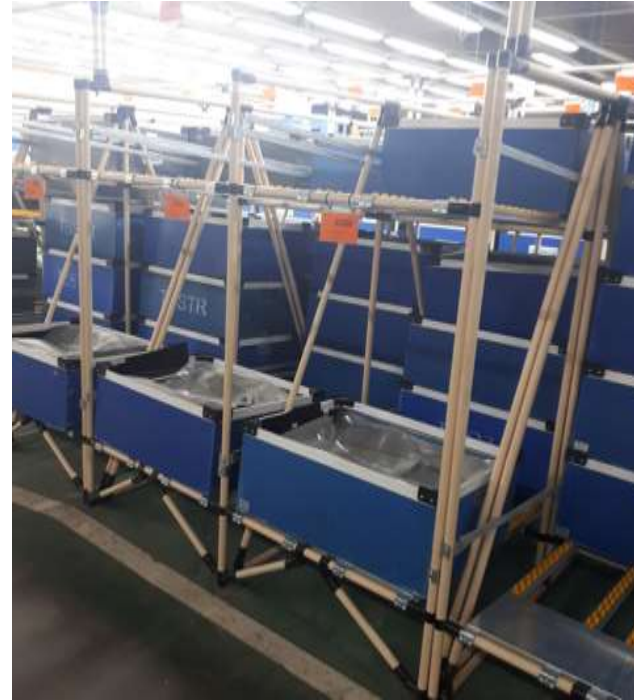


>

CONVEYOR & SPECIAL DESIGN MACHINERY

02

PROJECT EXAMPLES





> STEEL CONSTRUCTIONS & ARCHITECTURE

03

- Steel construction Projects



- Steel Roof Projects

- Building Constructions



- Warehouse Proejects

- Padel Courts



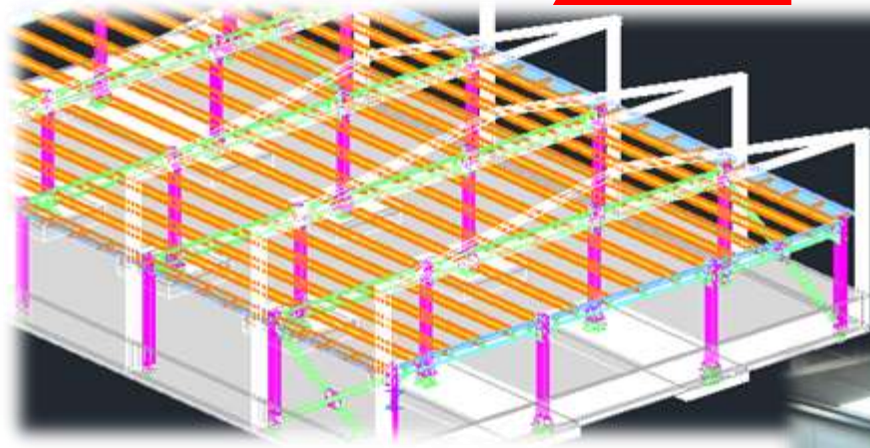
- Side Coatings











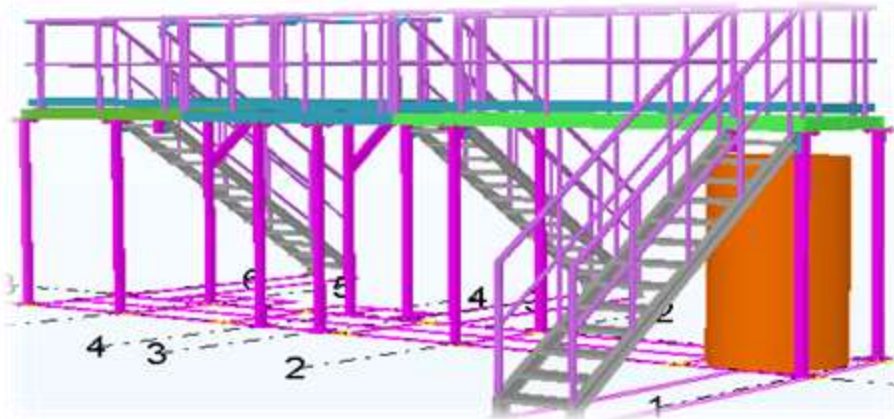
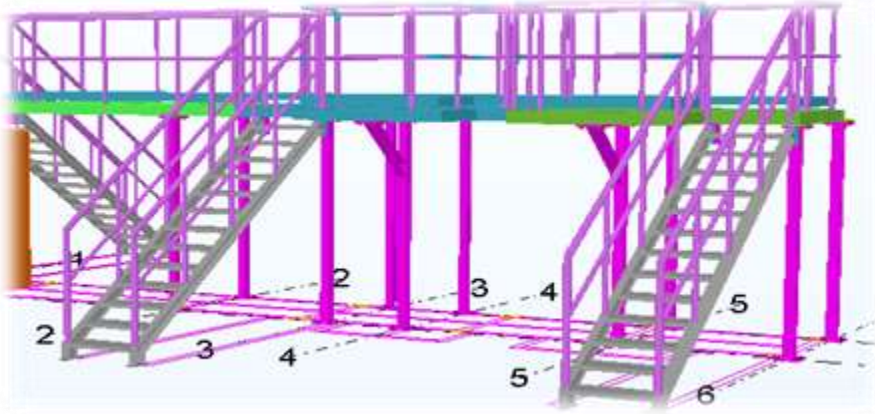


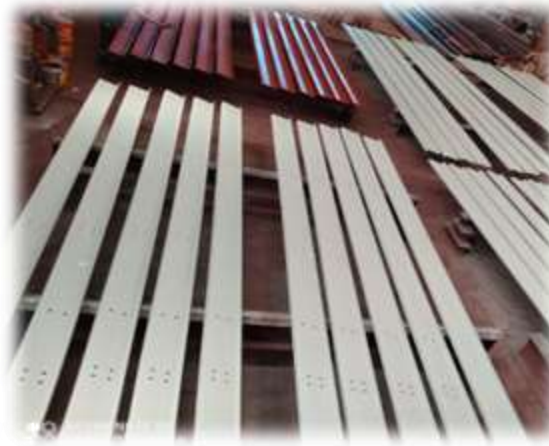
PROJECT EXAMPLES



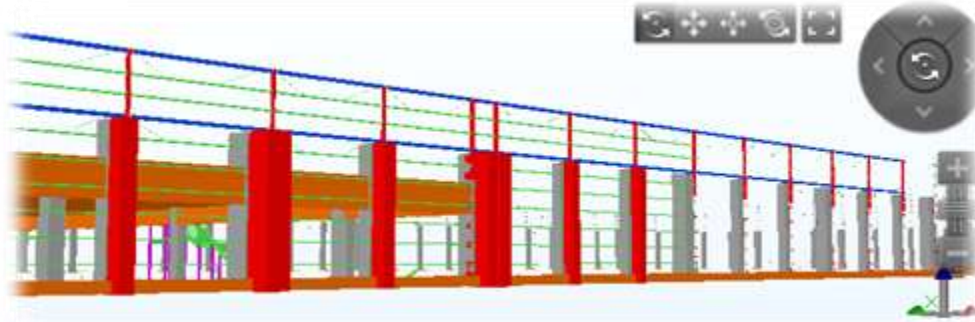
PROJECT EXAMPLES

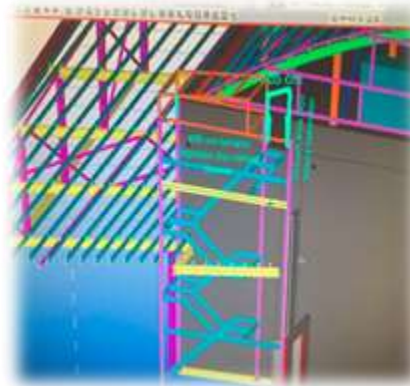








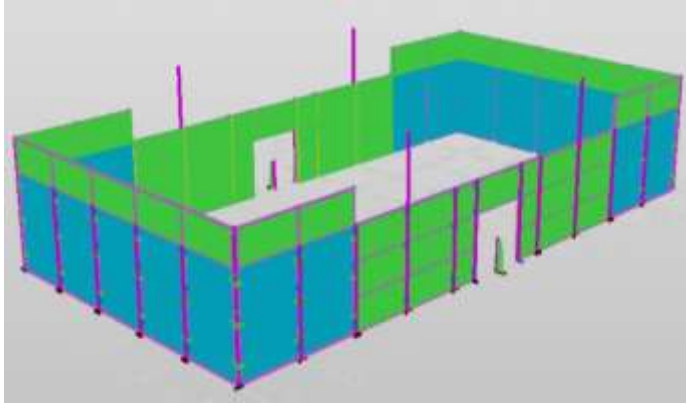








PROJECT EXAMPLES





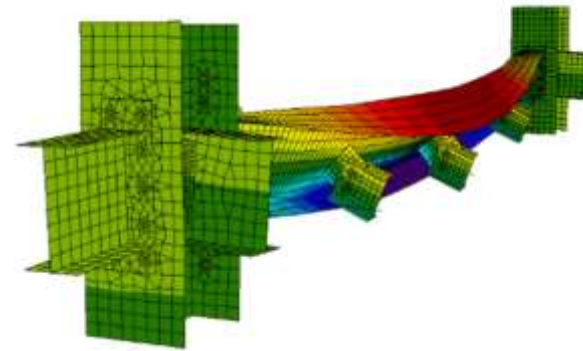
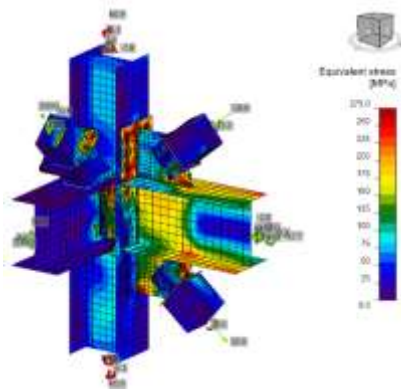
PROJECT EXAMPLES







Licensable construction project services according to current Steel Structure and Earthquake regulations.

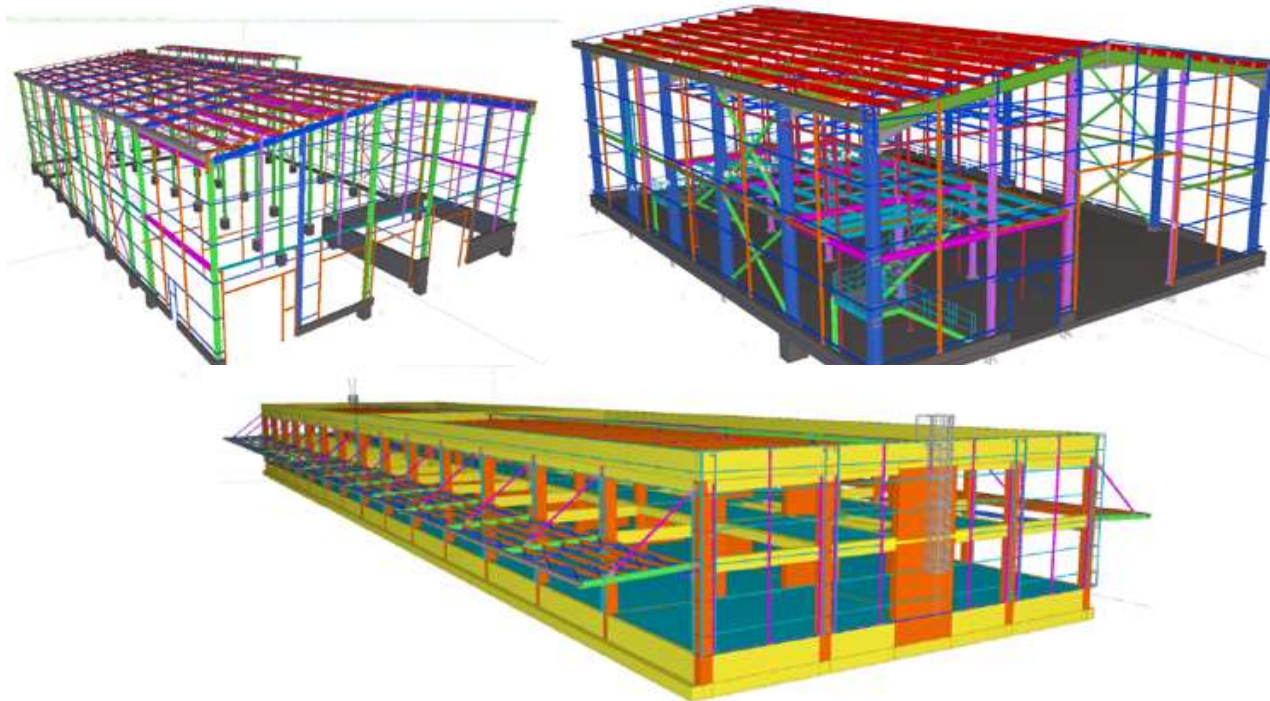




PROJECT
SERVICES

04

PROJECT EXAMPLES

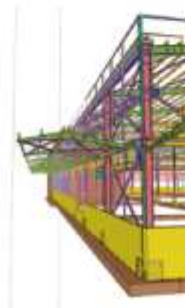
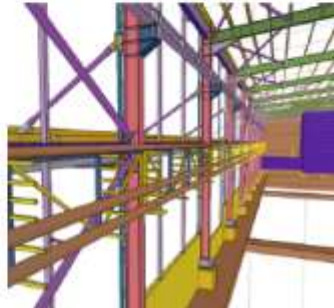
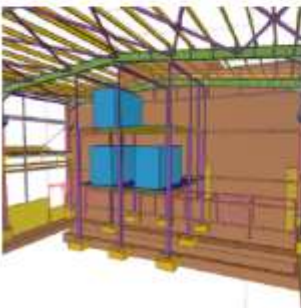
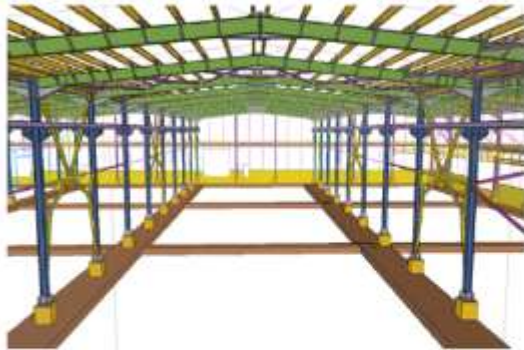




PROJECT
SERVICES

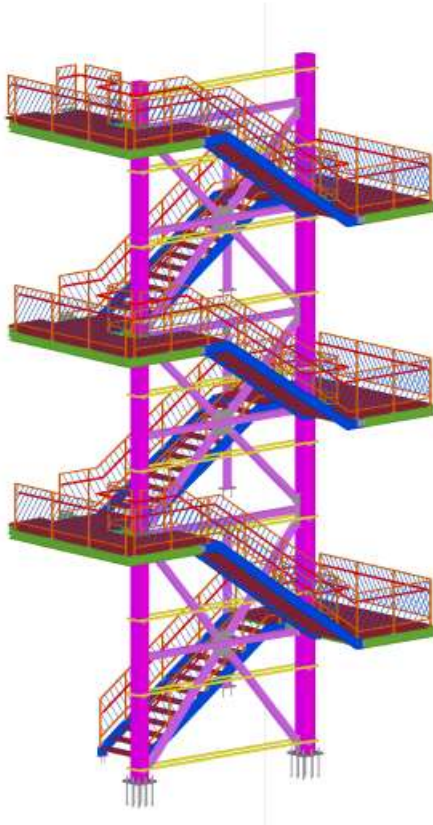
04

PROJECT EXAMPLES





PROJECT EXAMPLES





**CNC VERTICAL MILLING
MACHINES**

2 pcs 1100x550x550

1 pc 1400x650x650

CNC LATHE MACHINE

1 pc 8" CNC lathe

UNIVERSAL MACHINES

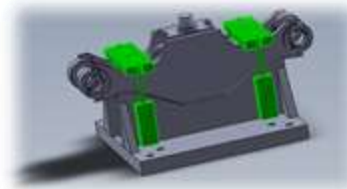
2 pcs Universal Boring

3 pcs Universal Lathe

**Guillotine shears & Press
Brake**

**MIG & TIG WELDING
MACHINES**

FORKLIFT & CARRYING TOOLS



- We offer a variety of precision manufacturing services including High Speed CNC Milling, Precision CNC Turning, & assemblies.
- We produce solutions in industrial areas such as Defense, Automotive and Rail Systems with the design and manufacture of Fixtures & Apparatus.
- With our experience, we are able to provide our customers with efficient, cost-effective, Quality Machining services.



> **MACHINING MANUFACTURING &
PRESSED PARTS**

05

ECCENTRIC PRES



2 pcs 60 tons

2 pcs 80 tons

1 pc 125 tons

1 pc 150 tons

1 pc H-Type 400 tons

PNEUMATIC PRES



1 pc 160 tons

2 pcs 250 tons

1 pc 270 tons

HYDRAULIC PRES



1 ps 50 tons

1 pcs 100 tons

1 pcs 150 tons

2 pcs 200 tons

MIG WELDING



**TURNING TABLE AUTOMATIC
WELDING**



**50-57-120 AMP SPOT
WELDERS**



- As the Trinmak family, we produce the spare parts, fasteners and all kinds of metal parts needed by domestic and foreign automotive companies, elevator manufacturers, advertising companies and our customers operating in different sectors.
- Thanks to our experienced staff and wide machine park in our Gebze facility, we continue to meet the needs of the domestic and foreign markets in our facility by providing a service at international standards.



> MACHINING MANUFACTURING &
PRESSED PARTS

05

PROJECT EXAMPLES





QUALITY CERTIFICATES

CERTIFICATE



Uluslararası Belgelendirme

TRINMAK MAKİNA MÜHENDİSLİK
VE BİL. TEKN. SAN. DİŞ. TİC. A.Ş.
KOZLUK MAH. D-100 YAN YOL CAD. NO: 10-2
ERENLER / SAKARYA / TÜRKİYE



Kuruluşunun "HER TÜRÜ SANAYİ VE İŞ MAKİNALARI ÇİHAZLARI İLE BUNLARA AIT YEDİK PARÇALARIN, BİLDİRİM ELEKTRİK VE ELEKTRONİK MAKİNA VE ALGİLERİN ÜRETİMİ, YAKAR VE MONTAJINI YAPMAK, HER TÜRÜ YAZILIM GELİŞTİRİLMESİ, VERİ HAZIRLAMA, ONARMA, DÜZENLEME İŞLEMLERİ VE HİZMETLERİ YAPMAK." **Kapsamı için**

For scope "PRODUCTION, REPAIR AND INSTALLATION OF ALL KINDS OF INDUSTRIAL AND BUSINESS MACHINERY DEVICES AND THEIR SPARE PARTS, SCIENTIFIC, ELECTRICAL AND ELECTRONIC MACHINES AND TOOLS, TO DEVELOP ALL KINDS OF SOFTWARE, DATA PREPARATION, REPAIR, EDIT OPERATIONS AND SERVICES."

KALİTE YÖNETİM SİSTEMİ QUALITY MANAGEMENT SYSTEM

Kuruluşta ve uyguladığı belgelendirme ve BEL tarafından gerçekleştirilen denetimler bu yönetim sisteminin aşağıdaki standartlara uyumuna katkılarını sağlamaktadır:

It certifies that it is established and implemented, and the audit performed by BEL.
It confirms that this management system meets the requirements of the following standard.

ISO 9001:2015

Sertifika Numarası / Certificate Number : A1520593
Sertifika Kodu / Certificate Code : TRINMAK MAKİNA
Sertifika Geçerlilik Tarihi / Certificate Validity Date : 17.06.2023
Sertifika Periyodu / Certificate Period : 1 Yıl / 1 Year

Şirketin bu belgeyi uyguladığı yönetim sistemi belgelendirme kapsamındaki faaliyetleri için geçerlidir. Belgelendirme kapsamındaki faaliyetler için geçerli olan diğer belgelendirme standartları ve diğer belgelendirme standartları ile uyumuna katkılarını sağlamaktadır. BEL tarafından gerçekleştirilen denetimler bu yönetim sisteminin aşağıdaki standartlara uyumuna katkılarını sağlamaktadır.



BELCERT ULUSLARARASI BELGELENDİRME ŞİRKETİ
Hürriyet Bulvarı, No:45, Türkmen Apt. K:1-D:7, Yakuplu, Beşikdüzü / İstanbul
Telefon: 0212 438 34 76 - E-mail: info@belcert.com

Belgeyi geçerli kılar. <https://www.belcert.com> adresinde kontrol edilebilir.

CERTIFICATE



Uluslararası Belgelendirme

TRINMAK MAKİNA MÜHENDİSLİK VE
BİLİŞİM TEKNOLOJİLERİ SANAYİ DİŞ.
TİCARET ANONİM ŞİRKETİ

ATASEVLER MAH. ÖZGÜRLÜK CAD. NO:4-A
İ. KATINDA / SAKARYA / KOCATEPE



Kuruluşunun "YAPISAL ÇELİKLER VE BAŞKA YERDE SİMLANDIRILAN MAMÜL BAŞKA YERDE SİMLANDIRILAN MAMÜL, İZGİRİ ÖZEL AMAÇLI MAKİNELERİN İMALATI" **Kapsamı için**

For scope "MANUFACTURING OF STRUCTURAL STEELS AND OTHER SPECIAL-PURPOSE MACHINERY NOT ELSE CLASSIFIED"

METALİK MALZEMELERİN ERİTME KAYNAĞI İÇİN KALİTE ŞARTLARI MELTING OF METALLIC MATERIALS QUALITY REQUIREMENTS FOR WELDING

TS EN ISO 3834-2

Kuruluşta ve uyguladığı belgelendirme ve BEL tarafından gerçekleştirilen denetimler bu yönetim sisteminin aşağıdaki standartlara uyumuna katkılarını sağlamaktadır:

It certifies that it is established and implemented, and the audit performed by BEL.
It confirms that this management system meets the requirements of the following standard.

Sertifika Numarası / Certificate Number : A1520593
Sertifika Kodu / Certificate Code : TRINMAK MAKİNA
Sertifika Geçerlilik Tarihi / Certificate Validity Date : 17.06.2023
Sertifika Periyodu / Certificate Period : 1 Yıl / 1 Year

Şirketin bu belgeyi uyguladığı yönetim sistemi belgelendirme kapsamındaki faaliyetleri için geçerlidir. Belgelendirme kapsamındaki faaliyetler için geçerli olan diğer belgelendirme standartları ve diğer belgelendirme standartları ile uyumuna katkılarını sağlamaktadır. BEL tarafından gerçekleştirilen denetimler bu yönetim sisteminin aşağıdaki standartlara uyumuna katkılarını sağlamaktadır.



BELCERT ULUSLARARASI BELGELENDİRME ŞİRKETİ
Hürriyet Bulvarı, No:45, Türkmen Apt. K:1-D:7, Yakuplu, Beşikdüzü / İstanbul
Telefon: 0212 438 34 76 - E-mail: info@belcert.com

Belgeyi geçerli kılar. <https://www.belcert.com> adresinde kontrol edilebilir.

CERTIFICATE



Uluslararası Belgelendirme

TRINMAK MAKİNA MÜHENDİSLİK
VE BİL. TEKN. SAN. DİŞ. TİC. A.Ş.
KOZLUK MAH. D-100 YAN YOL CAD. NO: 10-2
ERENLER / SAKARYA / TÜRKİYE



Kuruluşunun "HER TÜRÜ SANAYİ VE İŞ MAKİNALARI ÇİHAZLARI İLE BUNLARA AIT YEDİK PARÇALARIN, BİLDİRİM ELEKTRİK VE ELEKTRONİK MAKİNA VE ALGİLERİN ÜRETİMİ, YAKAR VE MONTAJINI YAPMAK, HER TÜRÜ YAZILIM GELİŞTİRİLMESİ, VERİ HAZIRLAMA, ONARMA, DÜZENLEME İŞLEMLERİ VE HİZMETLERİ YAPMAK." **Kapsamı için**

For scope "PRODUCTION, REPAIR AND INSTALLATION OF ALL KINDS OF INDUSTRIAL AND BUSINESS MACHINERY DEVICES AND THEIR SPARE PARTS, SCIENTIFIC, ELECTRICAL AND ELECTRONIC MACHINES AND TOOLS, TO DEVELOP ALL KINDS OF SOFTWARE, DATA PREPARATION, REPAIR, EDIT OPERATIONS AND SERVICES."

İş Sağlığı ve Güvenliği Yönetim Sistemi Occupational Health and Safety Management System

Kuruluşta ve uyguladığı belgelendirme ve BEL tarafından gerçekleştirilen denetimler bu yönetim sisteminin aşağıdaki standartlara uyumuna katkılarını sağlamaktadır:

It certifies that it is established and implemented, and the audit performed by BEL.
It confirms that this management system meets the requirements of the following standard.

ISO 45001:2018

Sertifika Numarası / Certificate Number : A1520593
Sertifika Kodu / Certificate Code : TRINMAK MAKİNA
Sertifika Geçerlilik Tarihi / Certificate Validity Date : 17.06.2023
Sertifika Periyodu / Certificate Period : 1 Yıl / 1 Year

Şirketin bu belgeyi uyguladığı yönetim sistemi belgelendirme kapsamındaki faaliyetleri için geçerlidir. Belgelendirme kapsamındaki faaliyetler için geçerli olan diğer belgelendirme standartları ve diğer belgelendirme standartları ile uyumuna katkılarını sağlamaktadır. BEL tarafından gerçekleştirilen denetimler bu yönetim sisteminin aşağıdaki standartlara uyumuna katkılarını sağlamaktadır.



BELCERT ULUSLARARASI BELGELENDİRME ŞİRKETİ
Hürriyet Bulvarı, No:45, Türkmen Apt. K:1-D:7, Yakuplu, Beşikdüzü / İstanbul
Telefon: 0212 438 34 76 - E-mail: info@belcert.com

Belgeyi geçerli kılar. <https://www.belcert.com> adresinde kontrol edilebilir.



> REFERENCES

