



Cloud Video Management System

# Simple, Easy and Open ARCHITECTURE

Micae Cloud Video Management System is designed to easily, monitor, playback and manage multiple locations from single point.



## More Than a Security System

Micae Cloud Video Management System is designed to unite all the end points and give a robust, simple and easy user experience for the multi site customers.



### High Technology

The infrastructure is based on micro-service architecture, therefore the system is 100% future proof.



### High Security

The microservices infrastructure is contains Zero-Trust, security feature to make the system 100% secure.



### Remote Management

The system works like an entire single system, this gives opportunity to manage all the end-points from a single point.



### Health Reports

All the detailed health status of the both end points and cameras are measured by the system, users can generate detailed health reports of the inventory.



### Machine Learning

Hardware based machine learning algorithms makes the system aware of anything which is very important for us. Object based analytics reduce the false alarm rate exponentially.



### Alarm Management

All the functions, faults or object based analytics can be a trigger of an alarm. The system can send, email, message or report the alarms the moment it happens.

## Why Machine Learning?

Machine learning technology is the most advanced video analytics system.

System can analyse any type of camera footage and can look for any kind of specific object which is important for the user.

The usage of Machine Learning algorithms is very wide.



More accurate information

Object models can be upgraded

Different works can be done in different times



## Business Intelligence

Machine Learning in Business Intelligence is enriching your current video footage and gives you detailed information about your business.

The types of BI analysis;

- People Counting
- Vehicle Counting
- Recognition of VIP customer
- Heat Map
- Que Management
- POS Integration



## Security

Machine Learning in Security is helping users to create safer environments. In this way, users focus on the objects necessary for them and do not watch unnecessary video footage.

The types of Security analysis;

- Face Recognition
- License Plate Recognition
- Object Based Analytics
- Abandoned Object Detection
- Lost Object Detection

# Live View

## Main Functions

1

### Connect Cameras from Multiple Sites

You can connect unlimited number of sites and unlimited number of devices from a very simple user interface.

2

### Monitor Up to 64 Cameras

The Live View supports up to 64 cameras live view in a single screen. You can easily switch between the main and other streams.

3

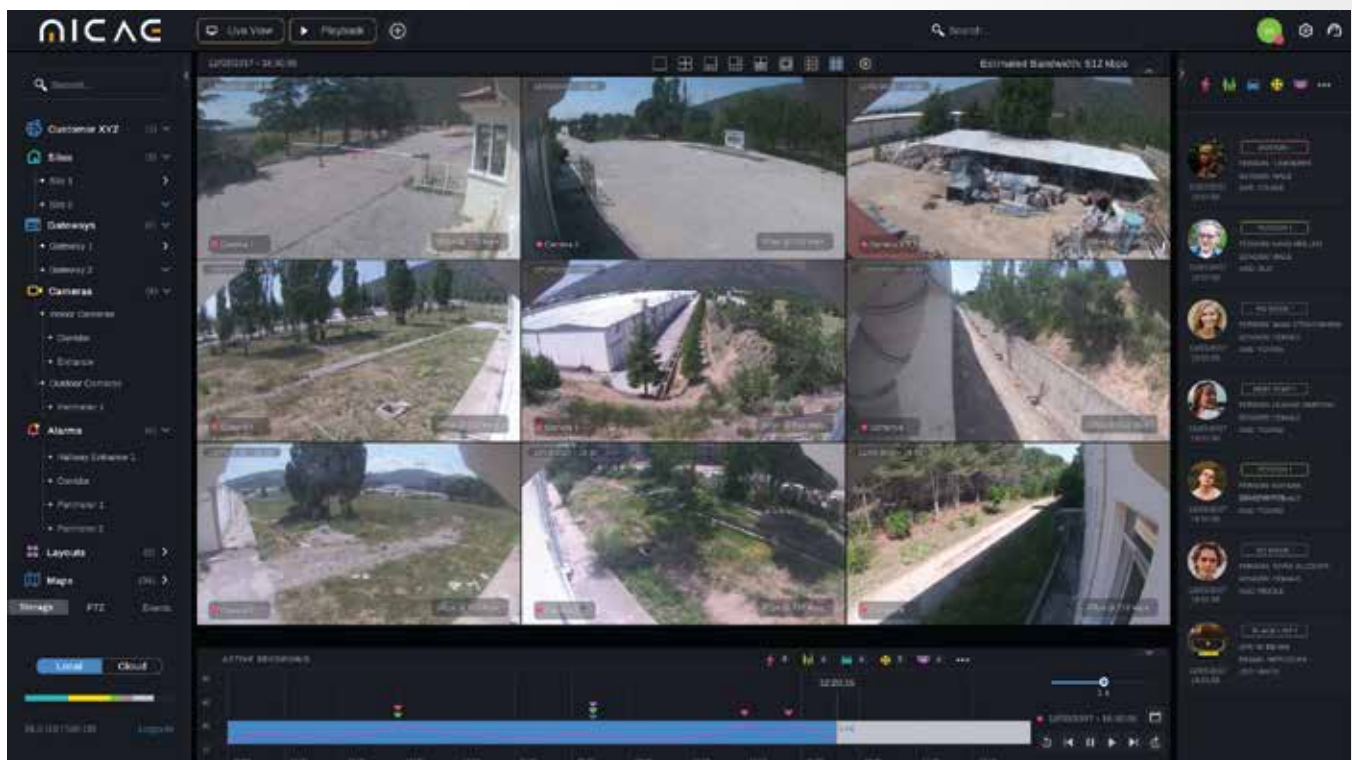
### User Based Layouts

Preconfigured user based layouts makes system robust and easy to use. The operators are not required to be a professional users.

4

### Monitor Instant Alarms

It is very easy to manage and response to all kinds of Alarms, either triggered alarms or system component failures.



# Playback

## Main Functions

1

### Playback Cameras from Multiple Sites

You can connect unlimited number of sites and pull the video footage from the video archive on the camera gateway

2

### Synchronised Playback

Synchronised playback is supported for 8 cameras depending on the bandwidth between gateway and client.

3

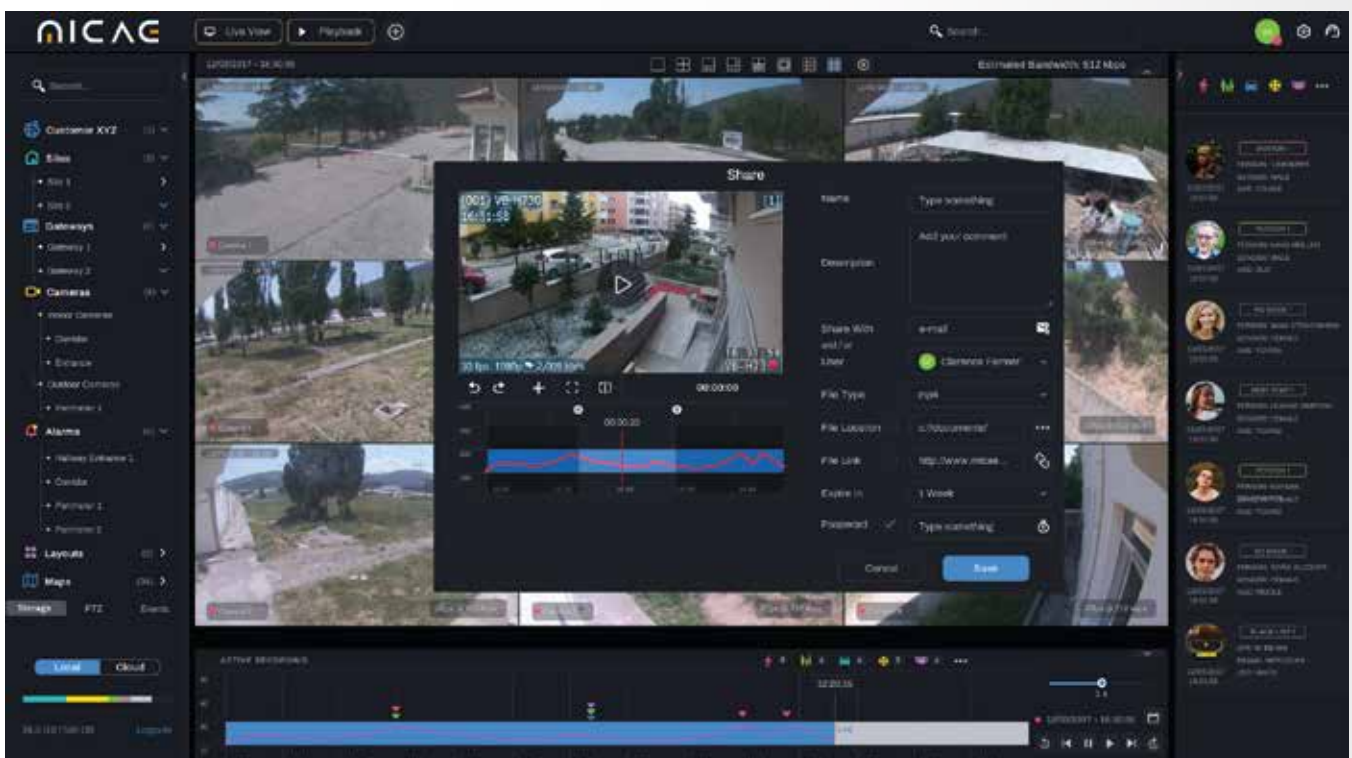
### Easy Export

Once the user retrieve the video from the gateway it is very easy to export and send to required place. We support almost all video formats.

4

### Backup to Cloud

If the video footage is very important it can be backed up by the user on the cloud server very easily.



# Health Status

## Main Functions

1

### Camera Health

The system constantly check the network and up time of all the connected cameras and if it finds some problem it sends alarm to specified user.

2

### Node Network Usage

The system is checking camera to gateway, gateway to system server network conection. This makes the user sure about the system components working.

3

### Node Heat Information

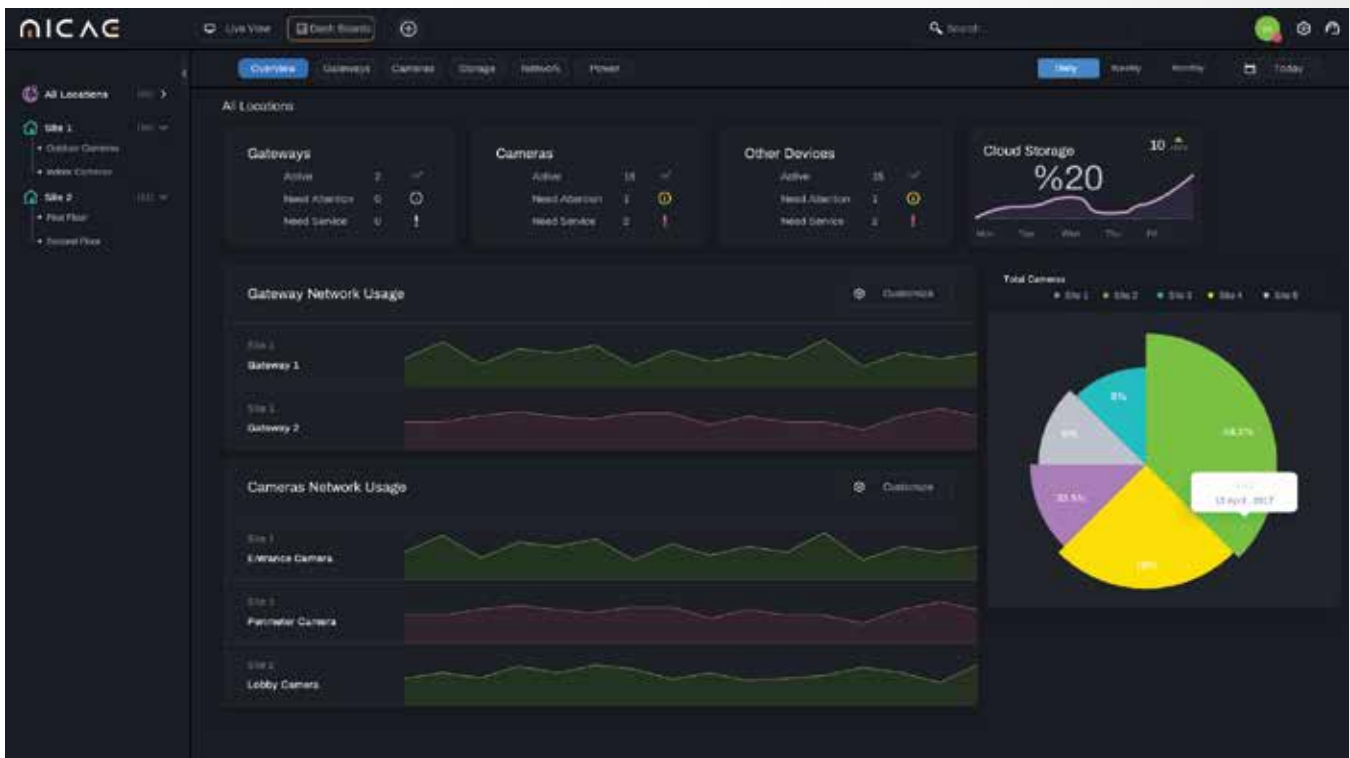
The system can monitor very detailed heat info of the gateways. If there is a required treshold for temprature system can give alarm to specified user.

4

### Node Disk Usage

In order to ensure that the recording function, which is the main task of the system, is carried out properly, it is necessary to check the storage units live.

disk bilgisini ekleyelim





# User Management

## Main Functions

1

### Role-based Group management

You can create as many groups as you want in the system, and you can define individual roles for all groups.

2

### Central user management

You can add users, assign them to predefined groups, add/remove their permissions easily, at a single point.

3

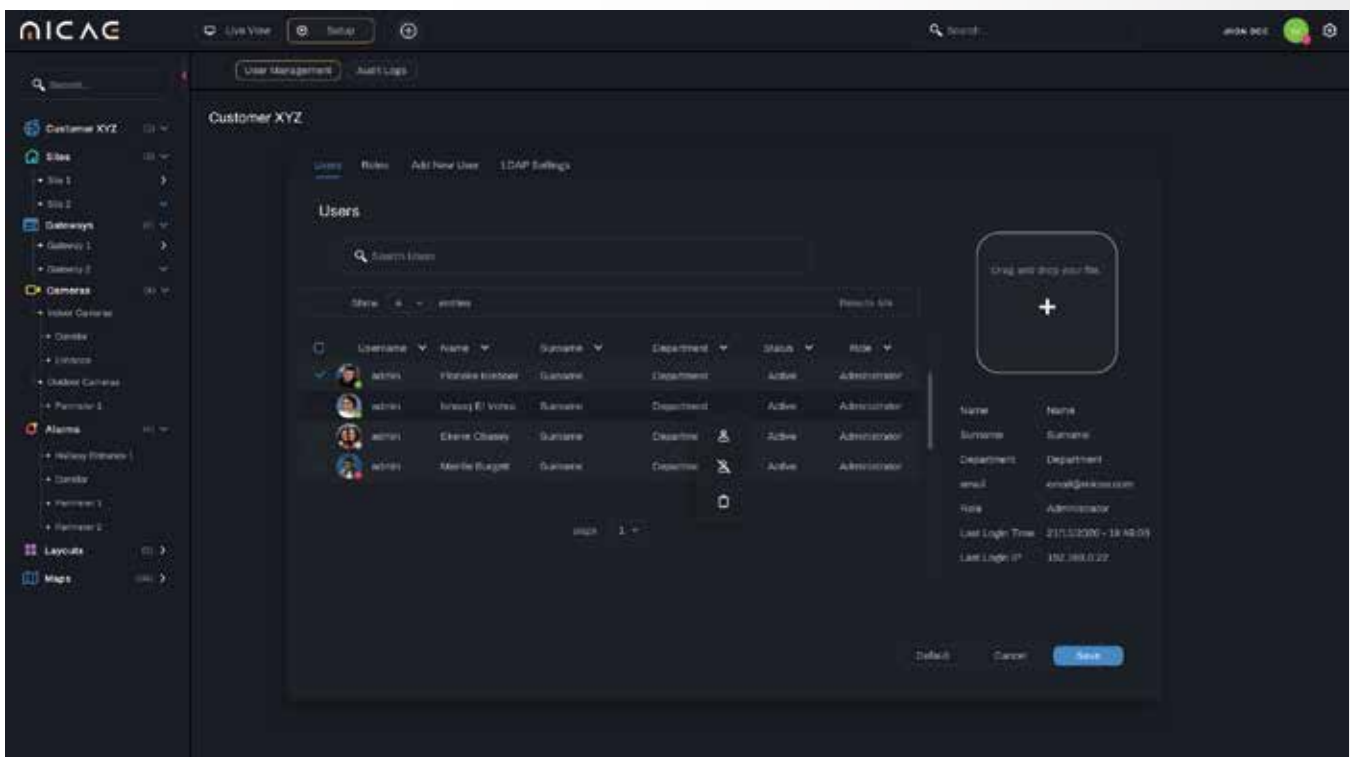
### User-based Alarm management

All users can have separate roles in the system, and you can send alarms that will occur to the selected users from within the system.

4

### User-based task management

You can pre-define what the users will do about the alarms that come to them within their responsibilities, and you can follow your internal business process-





# Business Intelligence

## Why it is important ?

---



### Staff Performance

How can i use my staff, more effcently and higher performance in my stores?



### Conversion Rates

How can I increase the coversion rates of the daily visitors into customers?

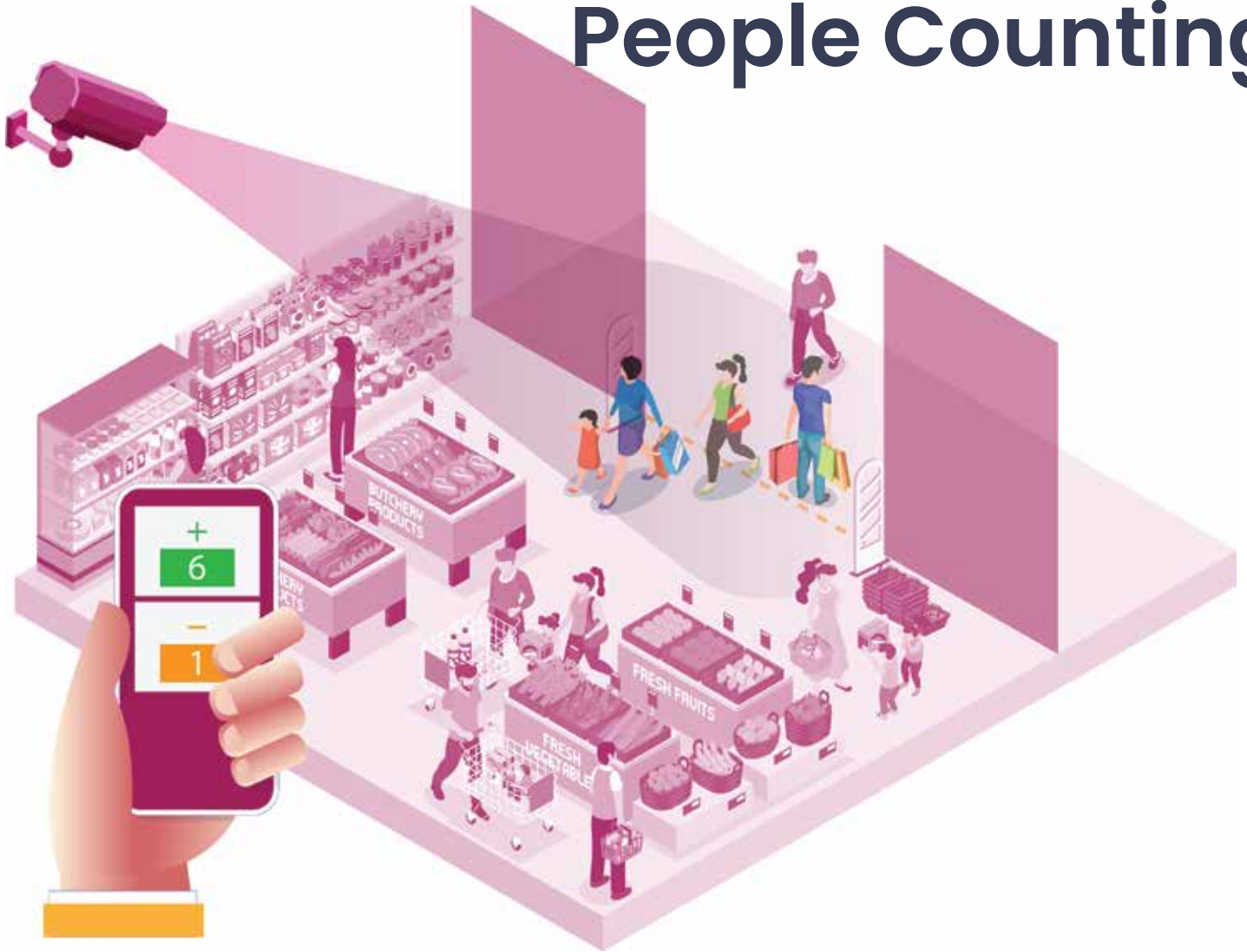


### Store Optimization

In which of my stores, customer density and sales performance are directly proportional?



# People Counting



## Do i know my visitors well enough ?

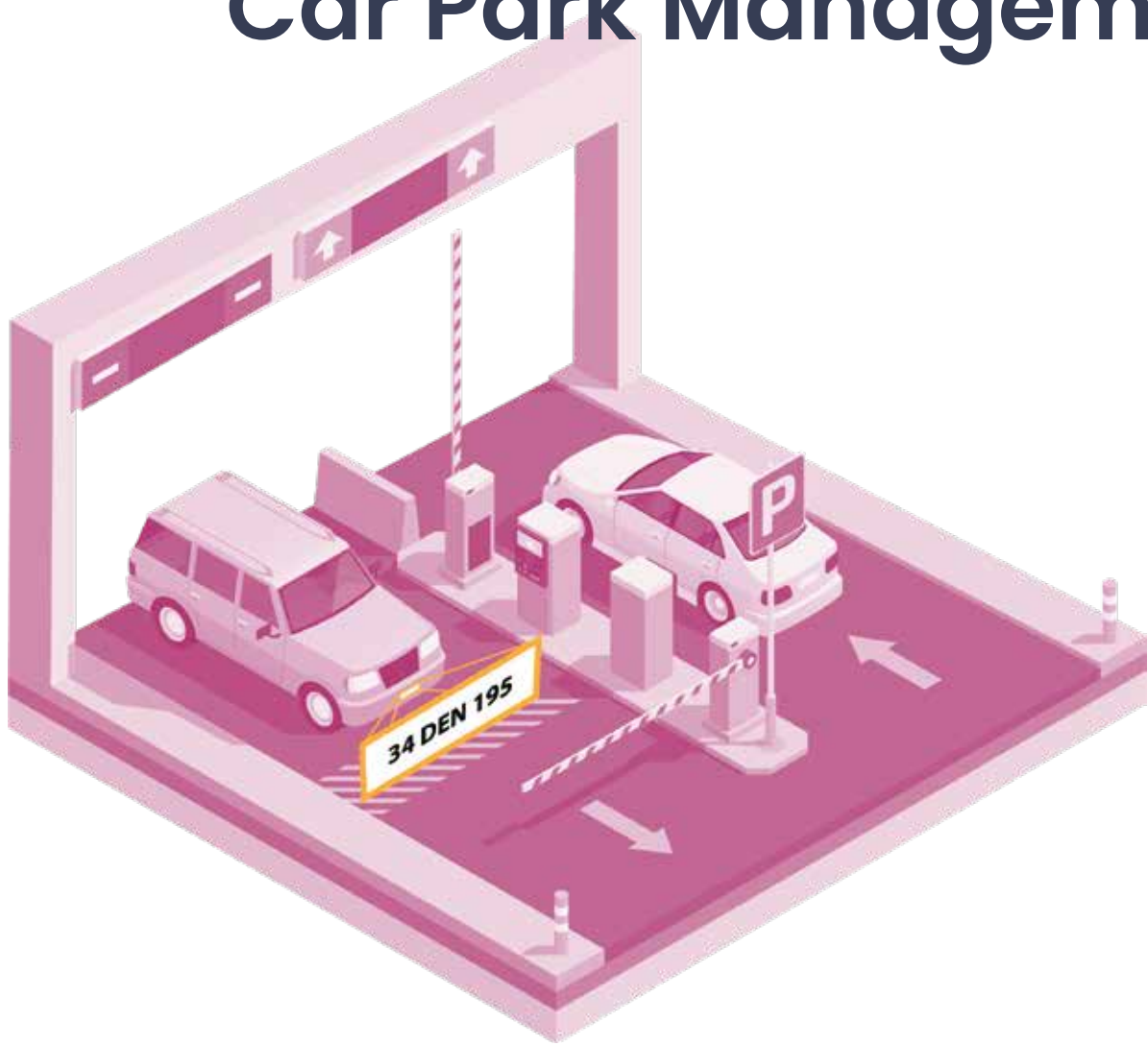
How many people pass in front of your store and how many of these people enter your store?

Did my advertisements increase the number of incoming visitors?

It is very important to know according to time periods, how many visitors coming to your shops during the day.

The AI technologies used in the system are constantly updating to make sure they are at the highest level of the current day.

# Car Park Management



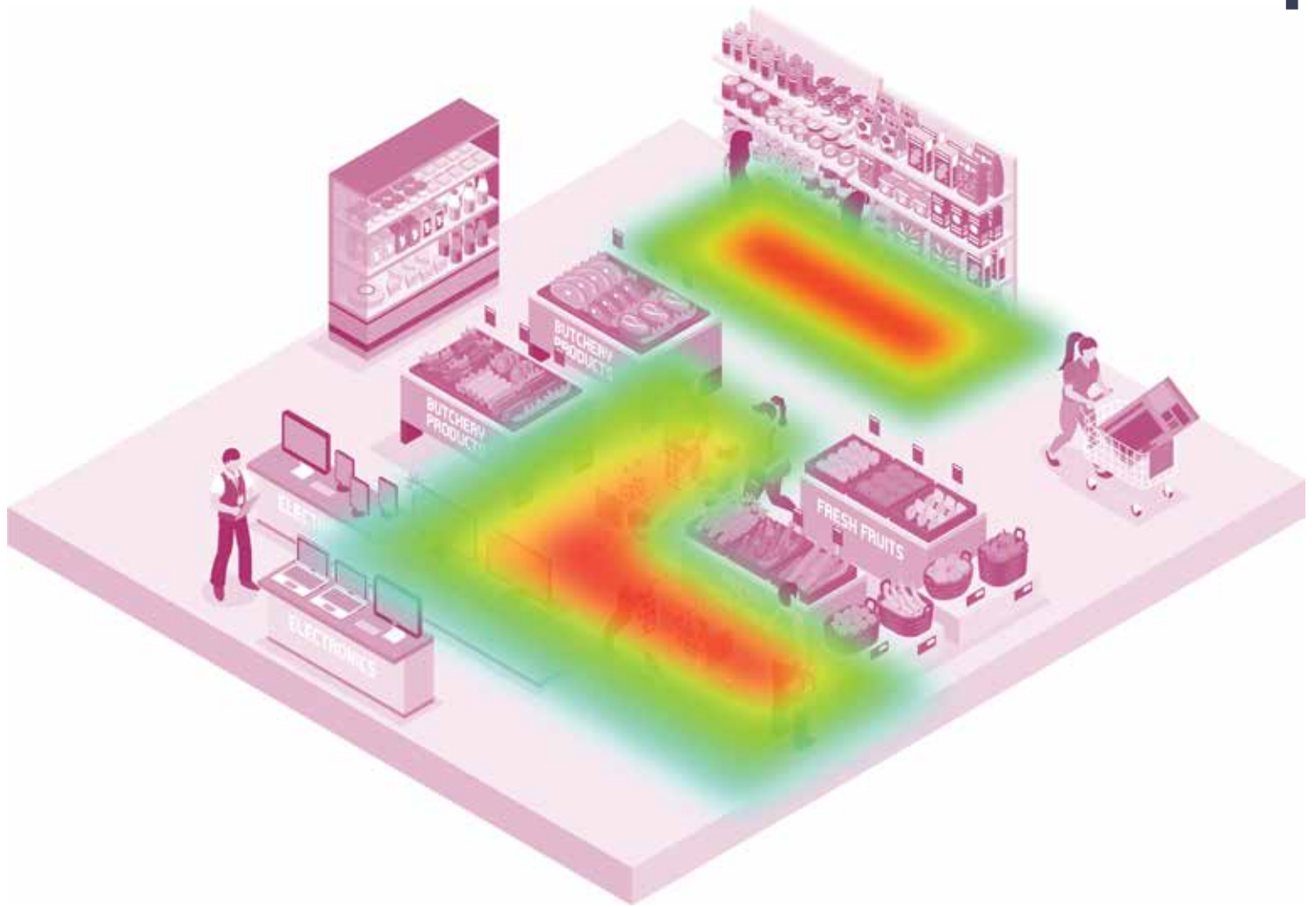
## Am i manageing my car parks correctly ?

What are the busiest perods of my car park in a day ?  
Who or which cars are using the car park more often ?

You can make sure that your important customers easily come to your stores without any parking problems, and you can offer them a high level of service.

Your car parks can be undercontrol at all times in the day, and you can be aware of the periods which are busy. You can also aware the visitors conversion rate to sales.

# Heat Map



## How accurate is my store layout ?

Which products or the shelves are mostly popular by your customers in the store?  
Which direction are your visitors following mostly in the store?

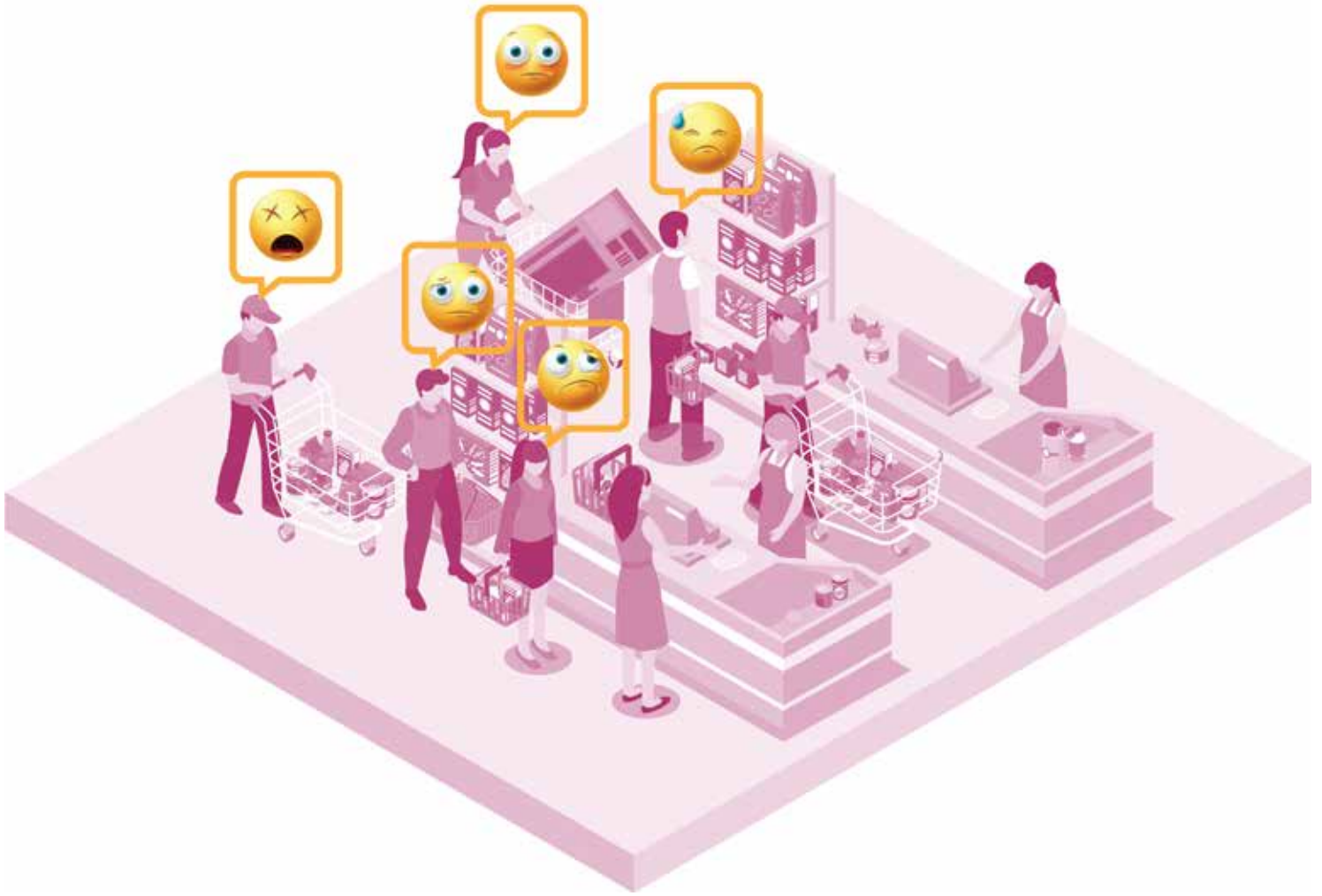
### Customer Behavior

Today's competitive conditions require companies to organize their stores very dynamically. It is not possible to make store arrangements customer-oriented without fully knowing the visitors.

### Conversion Rates

To understand the effectiveness of your stores, you need to know not only your sales volume, but also how many customers generated those sales!

# Que Detection



## What is my sales loss in front of cashier ?

At what periods of the day do we have most waiting lines in our shops?  
How many customers am I losing due to queues?

### Fast Checkout

Reducing waiting times at checkouts is a necessity to increase sales.

### Customer Experience

By improving customer experience and store satisfaction, you can increase customer spending.





# Security Analytics

## Why it is important ?

---



### Object Based Analytics

The system only focuses on objects that are threat to us.



### Hardware Based

Analyzes are made on the system side with powerful hardware.



### Central Management

You can manage and update all analyzes from a single point.

# Face Recognition



## Can you find the person you are looking for ?

Is there any suspect trying to enter into my building ?  
Where is the suspect in the building?

### **Suspect identification**

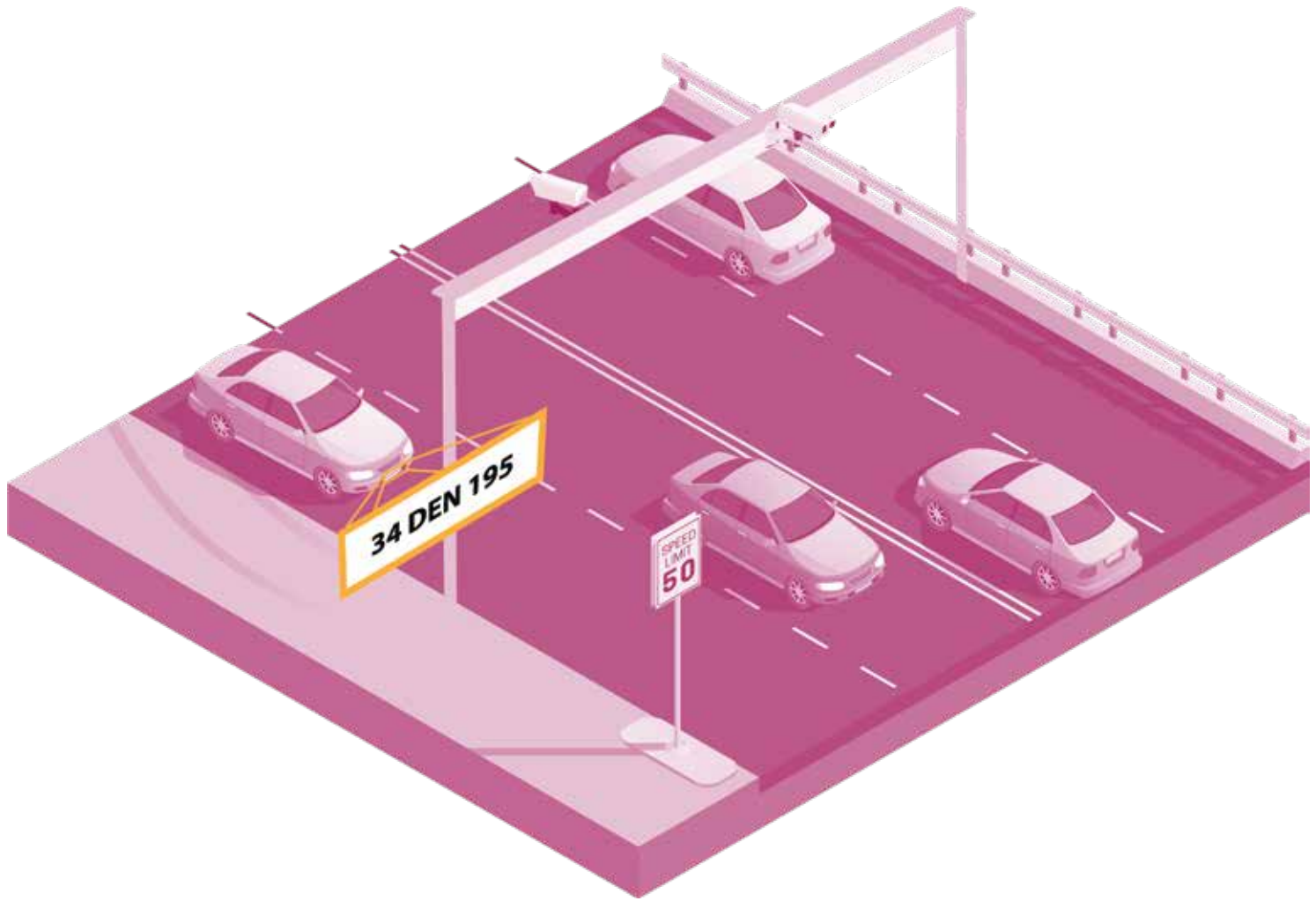
As soon as the system recognises the people in the database on the cameras, user-defined alarms are activated. Or you can search the system with the photo of a person you want.

### **Hardware agnostic**

The system can work with all pre-installed security systems, you do not need to change the existing cameras or buy a special camera.



# LPR Detection



## Can you find a vehicle you are looking for ?

Do suspicious or wanted vehicles enter my territory?  
Where did suspect parked the vehicle?

### **Suspect Search**

It is very easy and fast to make either real-time analyze or search and playback the videos of a suspected license plate.

### **Traffic Monitoring**

System monitors the traffic density, and gives detailed information about the peak hours of the traffic.

# Perimeter Security



## Would you like to know the people who are trying to break in your premises ?

Is my Perimeter Security system constantly giving false alarms?

Can my system track and gives alarm to humans only when they enter into my premises?

### Smart Perimeter Security

With advanced Machine Learning technology, the system only focuses on objects that may be a threat.

### Anomaly Detection

The system gives a warning when it encounters unexpected numbers or different objects other than the ones it constantly sees.

# Abandoned Object Detection



## Can i notice abandoned objects immediately ?

How long has been that abandoned luggage standing at that point ?  
Is the truck loading area suitable for loading?

### Safe Areas

Bags, packages, etc. left unattended in public areas are a great threat and it is necessary to intervene very quickly with such objects.

### Safe Warehouses

It is very important to remove objects dropped from forklifts in loading/unloading areas to prevent possible work accidents.