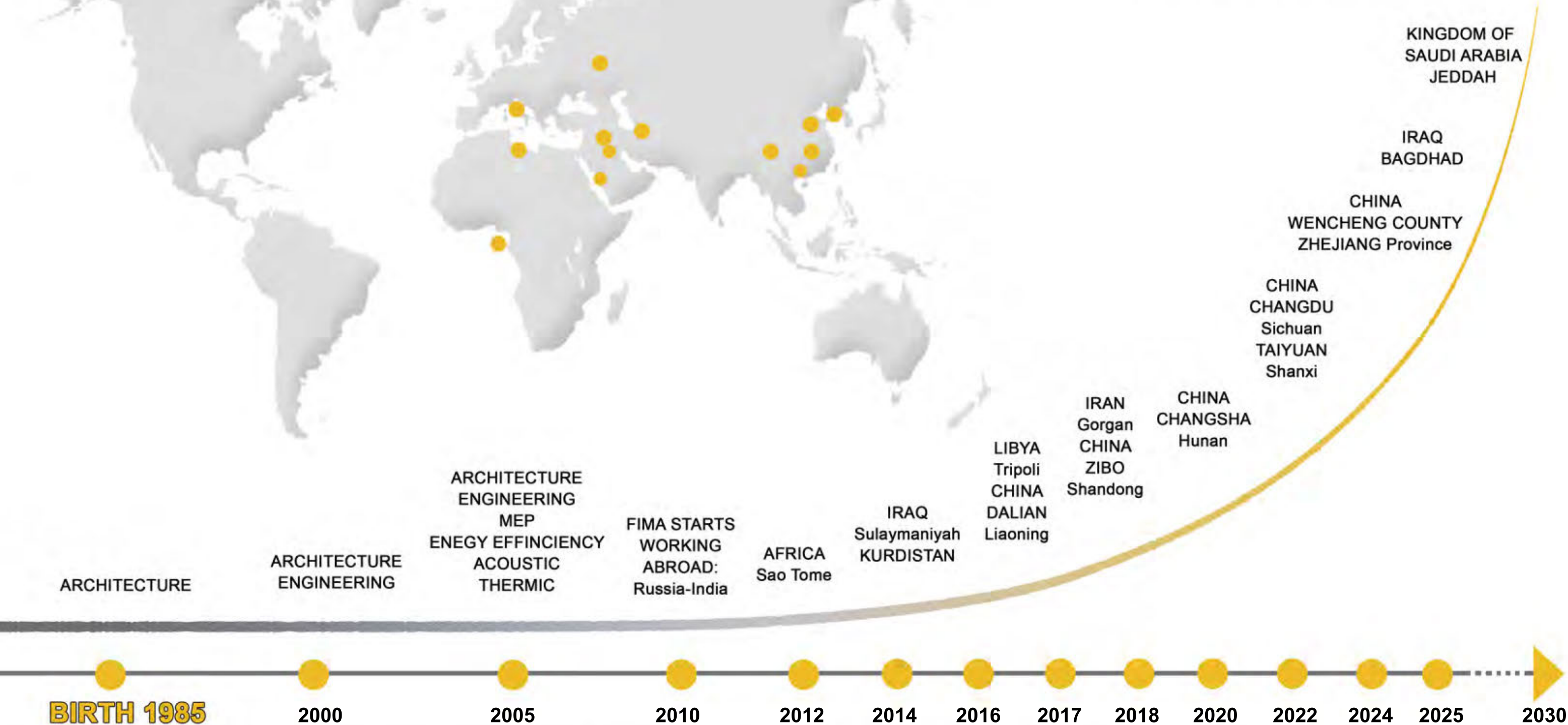


**FIMA**  
Architecture Design Engineering

# FIMA STORY



**BIRTH 1985**

2000

2005

2010

2012

2014

2016

2017

2018

2020

2022

2024

2025

2030

FILIBERTO ANDREOLI  
ARCHITECTURAL  
OFFICE

FILIBERTO ANDREOLI  
ARCHITETTO

FIMA ENGINEERING



FIMA MULTIDISCIPLINARY  
OFFICE FOR ARCHITECTURE



**FIMA IN THE TOP 50  
ARCHITECTURE COMPANY  
IN ITALY**

FIMA ARCHITECTURE  
DESIGN ENGINEERING





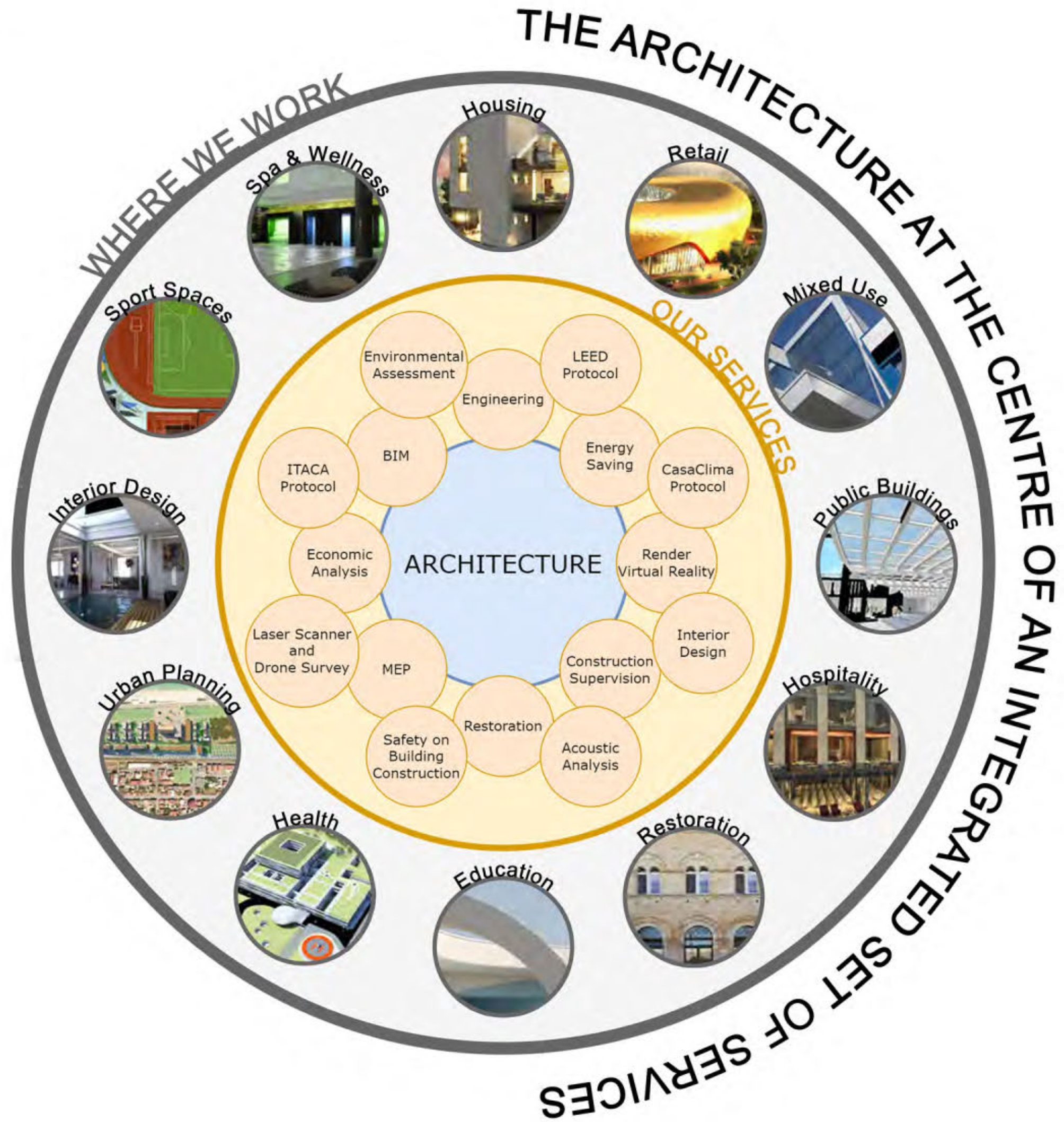
# Architecture Design Engineering

**FIMA is a multidisciplinary architectural firm based in Italy.**

**Alongside the architectural design, which has always been the core business, there are all the preparatory and fundamental disciplines for buildings and design of spaces capable of arousing emotions: engineers, thermo-technicians, acoustics experts, energy managers, economic managers, render artists, bim and cad experts and developer create a multifaceted team that guarantees a 360 degree approach to architecture, to ensure that every project takes care of all aspects.**

**The internal diversification and the exclusive winning combination between architecture and engineering are the strengths of a study able to deal with any type of project: from the interior design of luxury spaces to commercial buildings design, from restoration projects of buildings of high artistic value to restyling and energy requalification of industrial abandoned space.**

**A constant growth, gained through thirty years of presence on the market, has led the studio to an international level. Today FIMA works in Iraq, Iran, Libya and China.**



## OUR CERTIFICATIONS

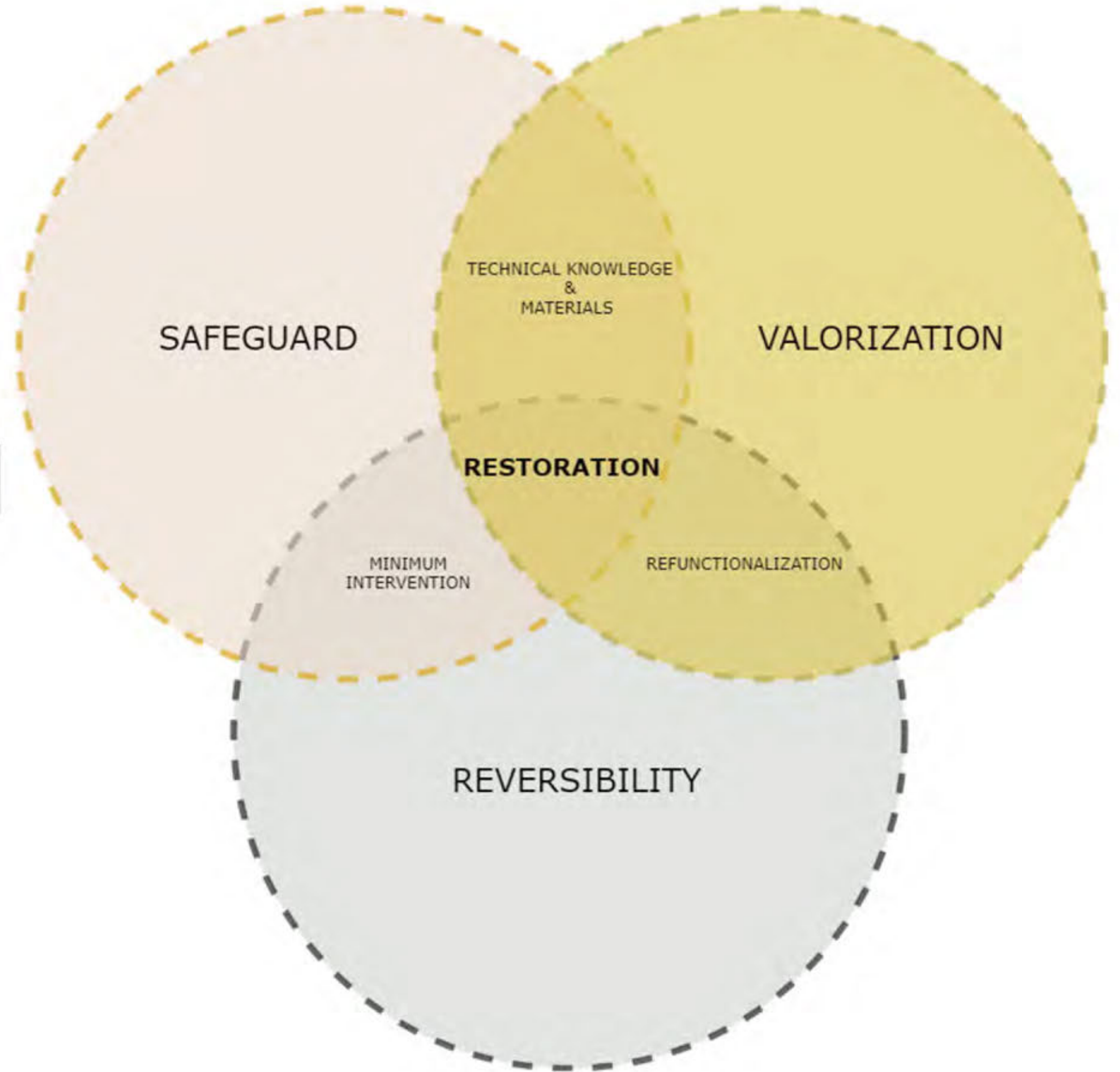
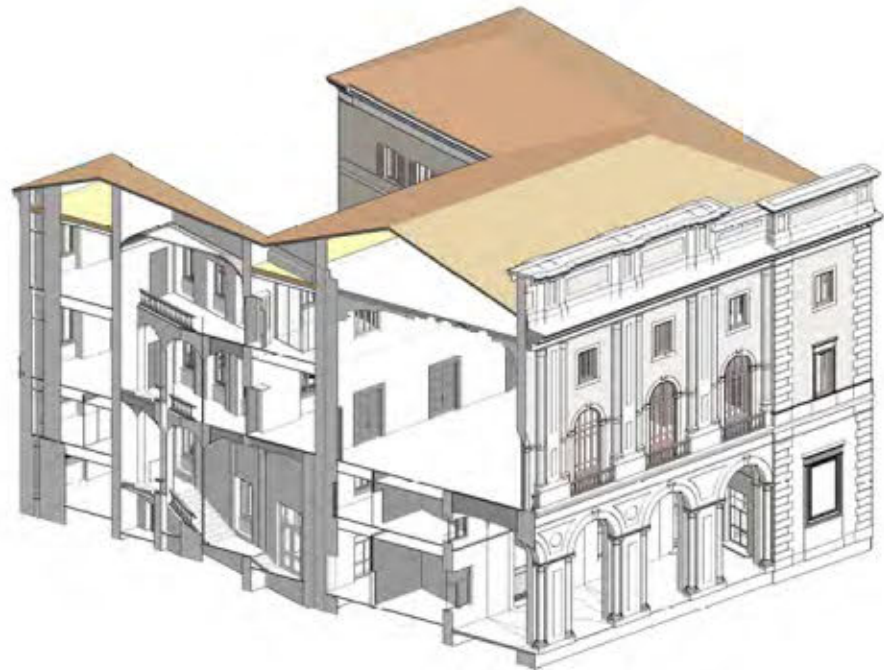
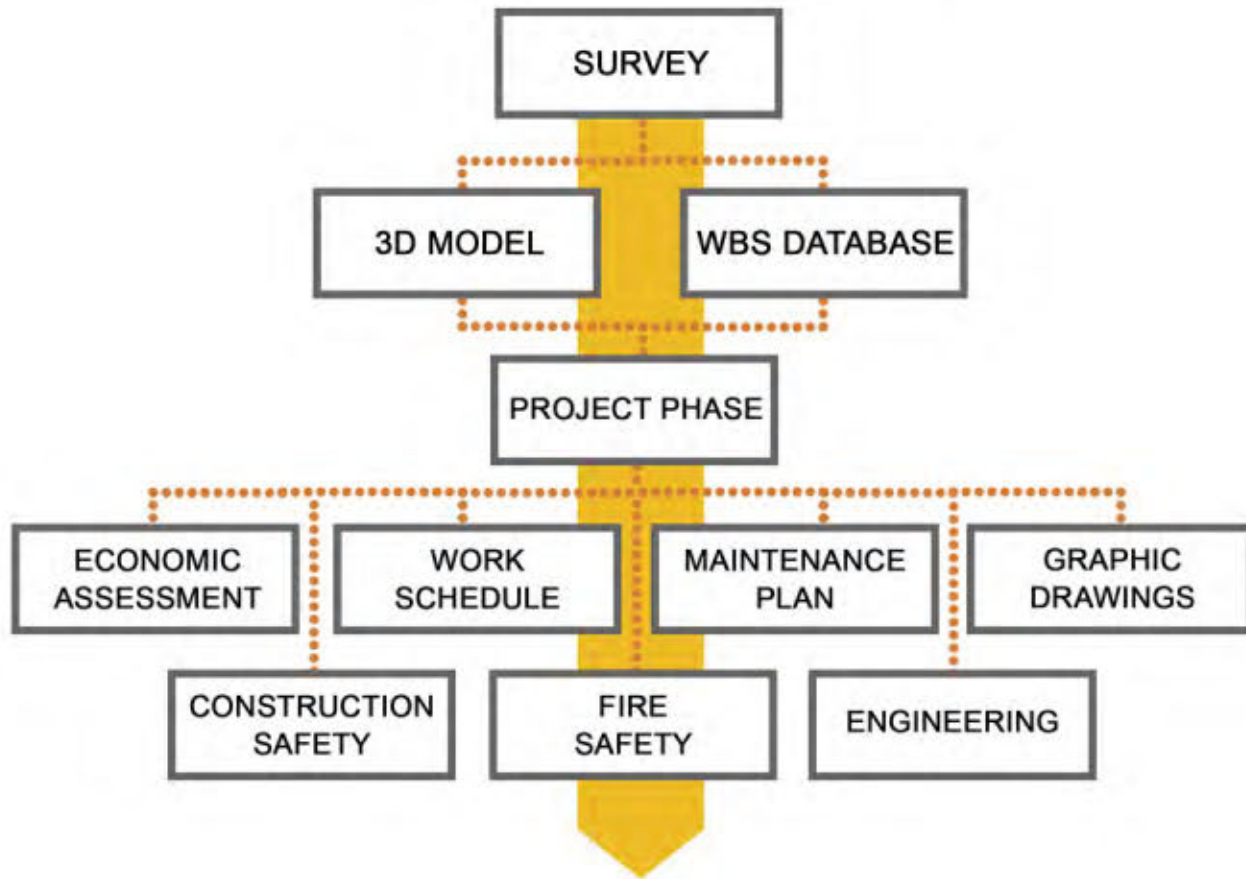


FIMA has been involved from long time in the design of buildings with high energy efficiency and zero CO2 emissions

## OUR GREEN CERTIFICATIONS



## H-BIM APPROACH



# RESTORATION PROJECTS



# PALLOTTA CASTLE

Caldarola (MC) ITALY

**sixteenth century**

HISTORICAL BUILDING BOUND  
BY THE ITALIAN SUPERINTENDENCE  
OF FINE ARTS

**BUILDING DAMAGED BY THE 2016 EARTHQUAKE IN CENTER ITALY**

SEISMIC IMPROVEMENT

INTERIOR AND EXTERIOR RESTORATION

ENERGY REFURBISHMENT

LASER SCANNER, DRONE AND PHOTOGRAMMETRIC SURVEY

TO 3D MODEL\_INTERIOR AND EXTERIOR

FUNCTIONS ENHANCEMENT

# PALLOTTA CASTLE

Caldarola (MC) ITALY



# PALLOTTA CASTLE

Caldarola (MC) ITALY

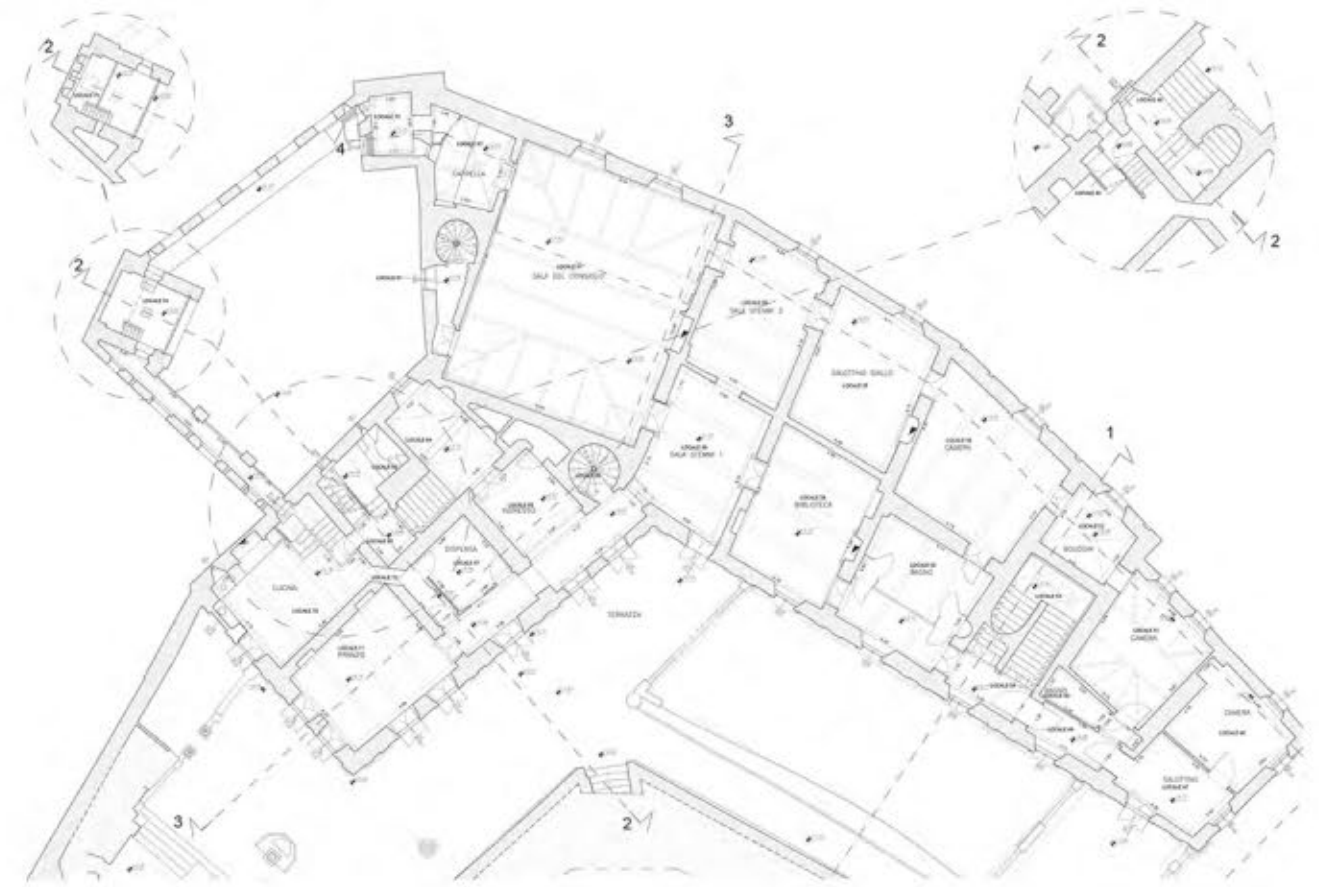


LASER SCANNER, DRONE AND PHOTOGRAMMETRIC SURVEY

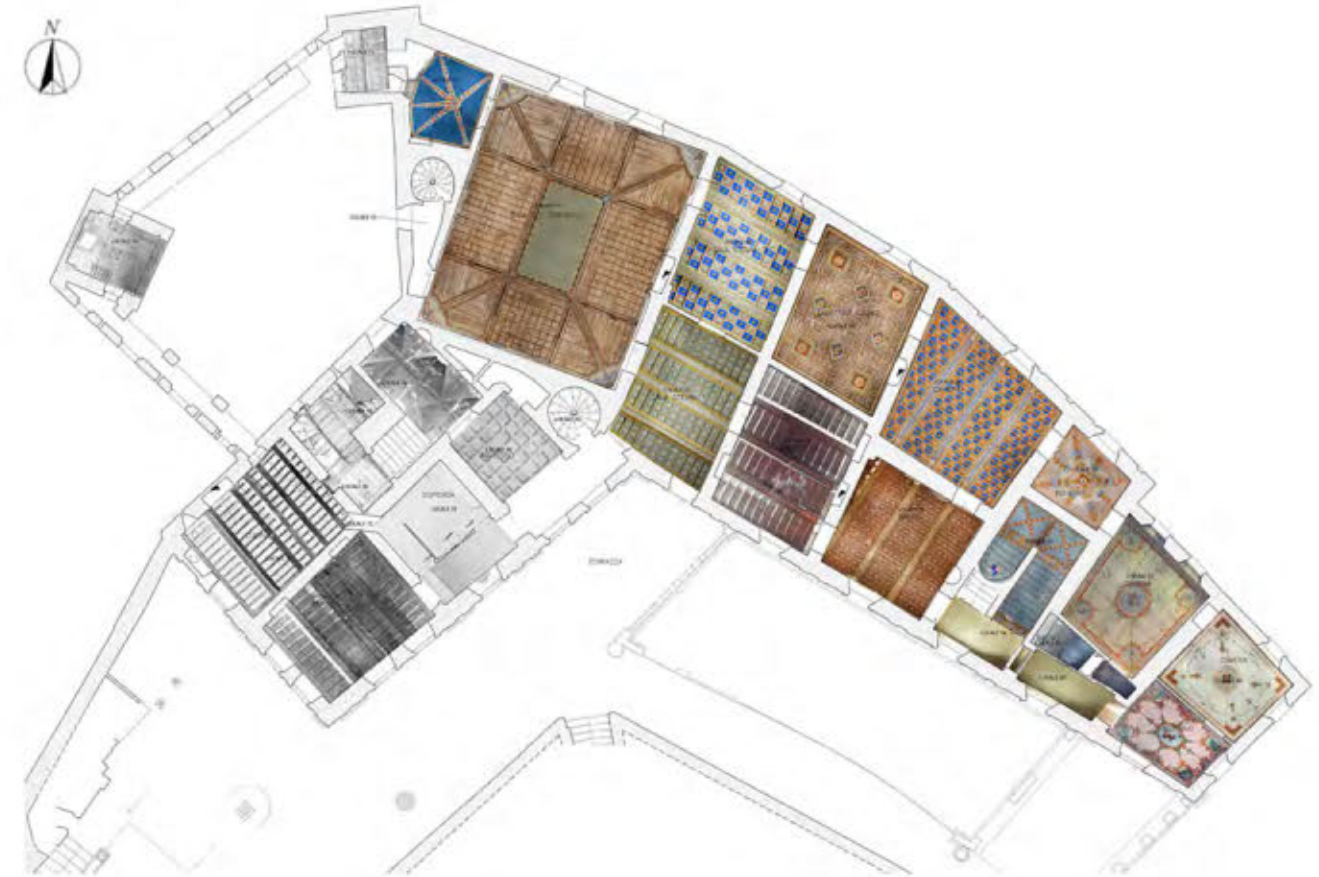




GROUND FLOOR PLAN



CEILING PLAN



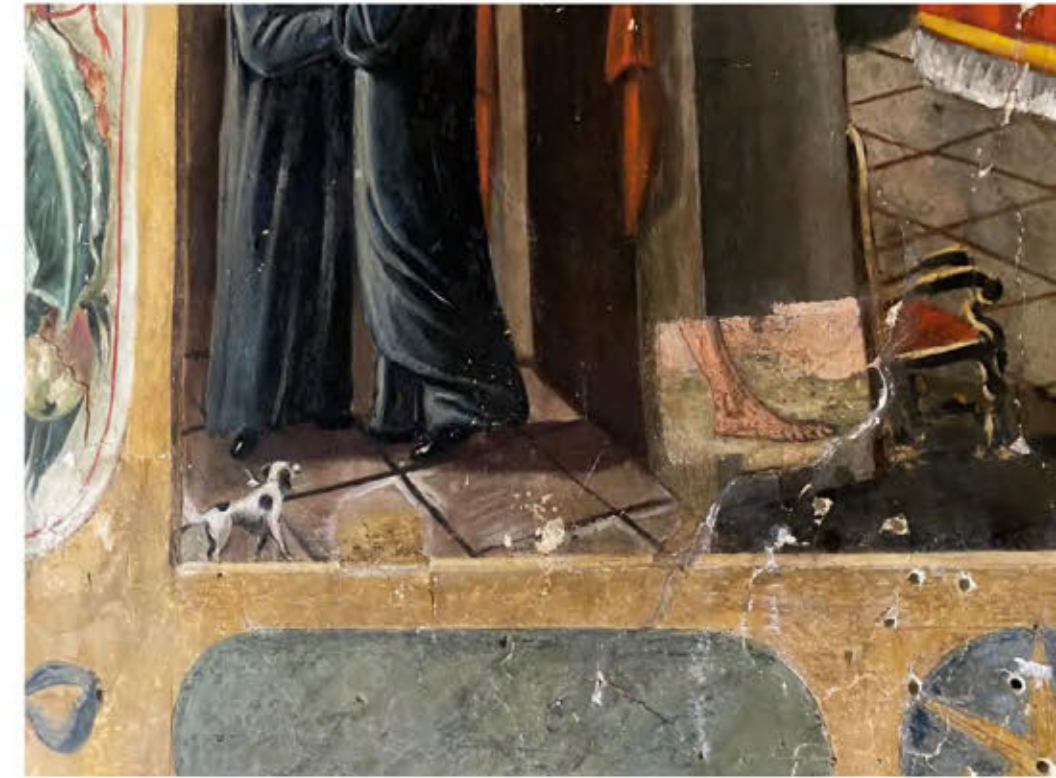
# PALLOTTA CASTLE

Caldarola (MC) ITALY



# PALLOTTA CASTLE

Caldarola (MC) ITALY



# ANCIENT COUNTY OF TAIYUAN

Shanxy Province, China

sixteenth century

UNESCO SITE

SEISMIC IMPROVEMENT

INTERIOR AND EXTERIOR RESTORATION

INTERIOR DESIGN

CONVERSION IN LUXURY HOTEL

# ANCIENT COUNTY OF TAIYUAN

Shanxy Province, China



# ANCIENT COUNTY OF TAIYUAN

Shanxy Province, China



# ANCIENT COUNTY OF TAIYUAN

Shanxy Province, China



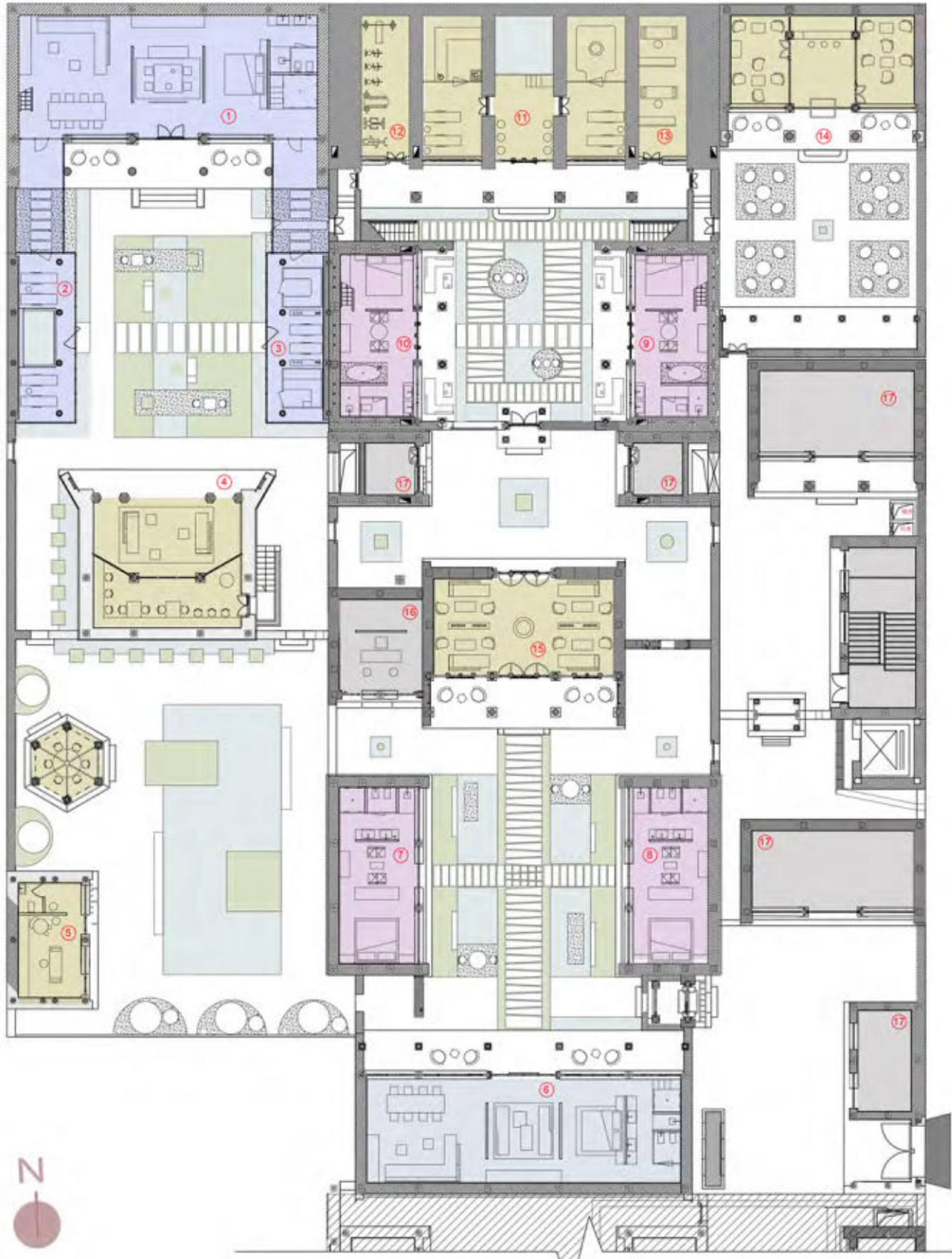
# ANCIENT COUNTY OF TAIYUAN

Shanxy Province, China

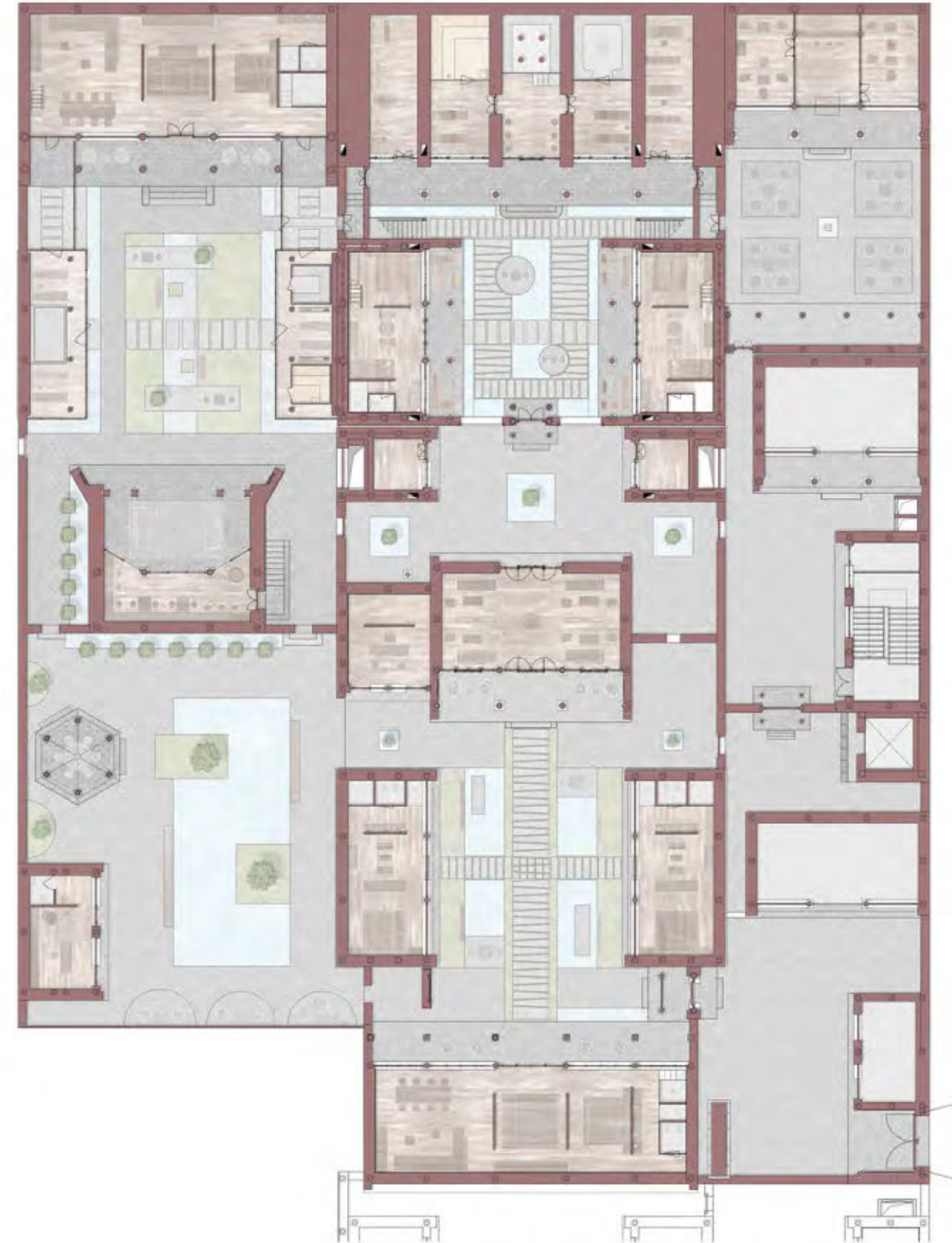


# ANCIENT COUNTY OF TAIYUAN

Shanxy Province, China



- ① Delux room PLUS
- ② Jacuzzi and relax area
- ③ Sauna, turkish bath and relax area
- ④ Bar, food, comun space
- ⑤ Massage
- ⑥ Delux room
- ⑦ Superior room
- ⑧ Superior room
- ⑨ Superior room
- ⑩ Superior room
- ⑪ jacuzzi, sauna, turkish bath
- ⑫ Gym
- ⑬ Massage
- ⑭ bar, food, reading area
- ⑮ Commun space, drink and food
- ⑯ Office
- ⑰ Service room



# ANCIENT COUNTY OF TAIYUAN

Shanxy Province, China



# ANCIENT COUNTY OF TAIYUAN

Shanxy Province, China



# ANCIENT COUNTY OF TAIYUAN

Shanxy Province, China



# ANCIENT COUNTY OF TAIYUAN

Shanxy Province, China



# ANCIENT COUNTY OF TAIYUAN

Shanxy Province, China



# ANCIENT COUNTY OF TAIYUAN

Shanxy Province, China



# ANCIENT COUNTY OF TAIYUAN

Shanxy Province, China



# VILLA BUONACCORSI

Potenza Picena (MC), Italy

**eighteenth century**

**HISTORICAL BUILDING BOUND  
BY THE ITALIAN SUPERINTENDENCE  
OF FINE ARTS**

**INTERIOR AND EXTERIOR RESTORATION**

**CONVERSION INTO BOUTIQUE HOTEL**

**FUNCTIONS ENHANCEMENT**



# VILLA BUONACCORSI

Potenza Picena (MC), Italy



# VILLA BUONACCORSI

Potenza Picena (MC), Italy



# VILLA BUONACCORSI

Potenza Picena (MC), Italy



# RECTORATE OF POLYTECHNIC UNIVERSITY OF MARCHE REGION

Ancona (AN) ITALY

**nineteenth century**

HISTORICAL BUILDING BOUND  
BY THE ITALIAN SUPERINTENDENCE  
OF FINE ARTS

**BUILDING DAMAGED BY THE 2016 EARTHQUAKE IN CENTER ITALY**

SEISMIC IMPROVEMENT

INTERIOR AND EXTERIOR RESTORATION

ENERGY REFURBISHMENT

SCAN TO BIM WITH POINTS CLOUD

LASER SCANNER, DRONE AND PHOTOGRAMMETRIC SURVEY

FUNCTIONS ENHANCEMENT

# RECTORATE OF POLYTECHNIC UNIVERSITY OF MARCHE REGION

Ancona (AN), Italy



# RECTORATE OF POLYTECHNIC UNIVERSITY OF MARCHE REGION

Ancona (AN), Italy



structural test on wall



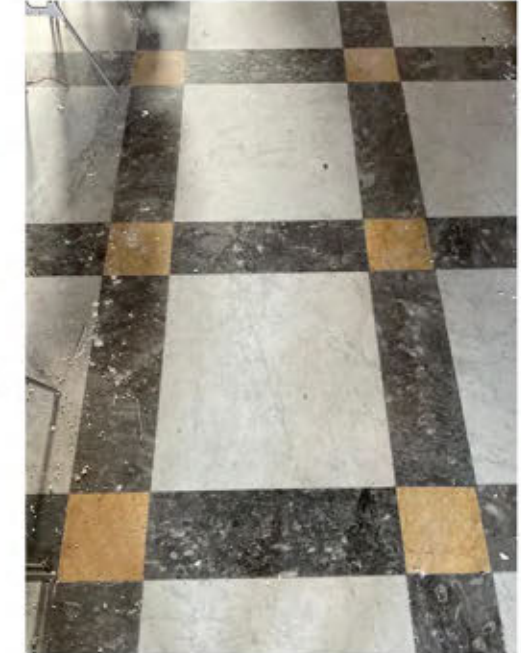
structural test on slab



test on paint and plaster



floor analysis



# RECTORATE OF POLYTECHNIC UNIVERSITY OF MARCHE REGION

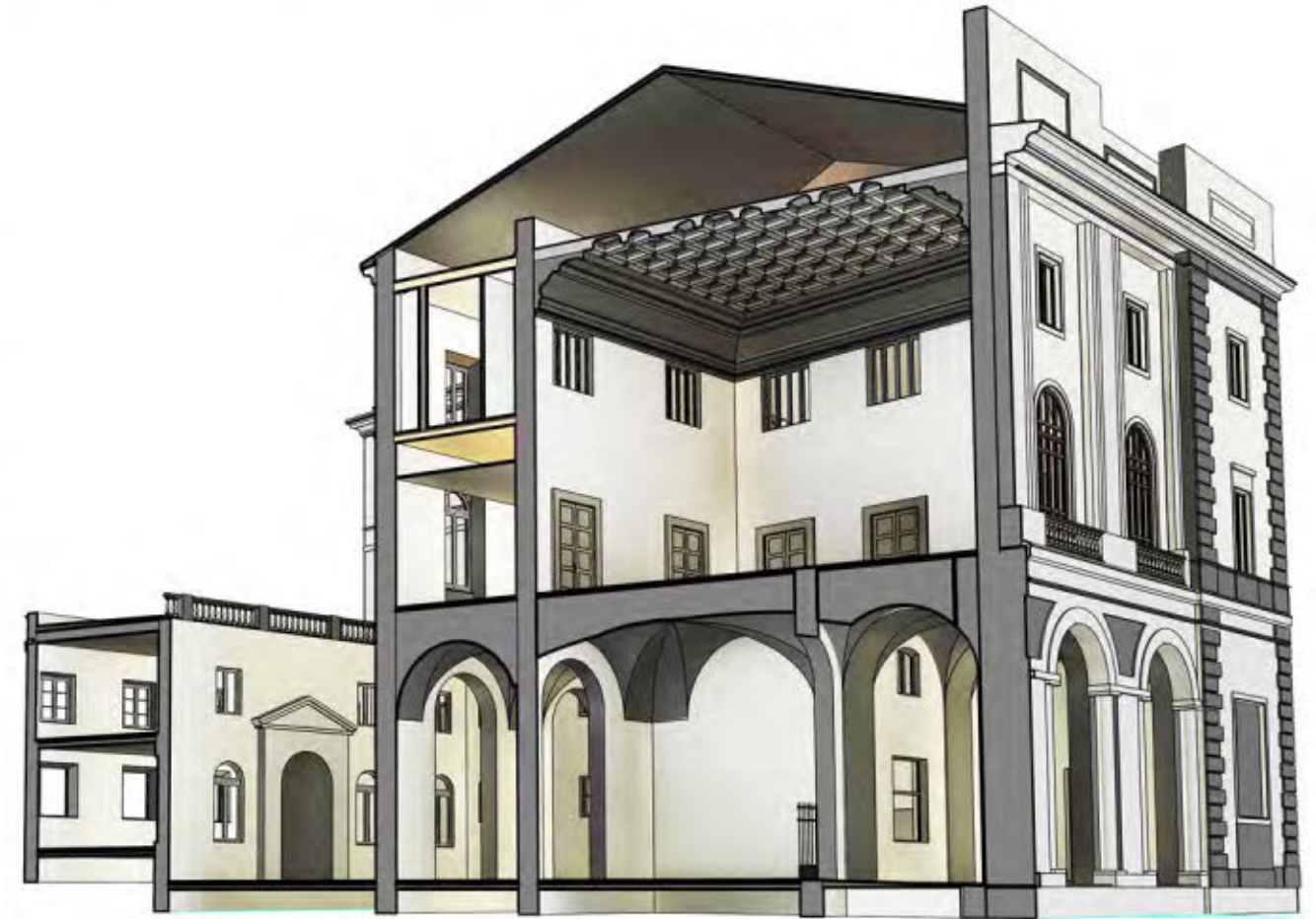
Ancona (AN), Italy

## H-BIM FOR HISTORICAL HERITAGE CONSERVATION

HBIM (Historic Building Information Modeling) was born as a process to replicate what already exists in the digital world, then facilitating its study and analysis by comparison, in order to apply the coordinated and multidisciplinary management processes of the more general BIM, to the intervention on the existing.

The process involves the dynamic evaluation of the behavior of the objects making up the model, based on the physical-thermal characteristics of the products selected to define the building-plant system.

Through the analysis of the financial flows deductible from the 4D and 5D predictive activities, the economic-financial convenience of the project is established. If the thermal-economic simulation were to make the project less convenient for the contracting authority, the parametric architecture of the BIM authoring software speeds up the modification of the performance characteristics of the modeled digital objects, allowing the development scenarios for the construction of the project to be reprogrammed in a short time.



Interior view

# VILLA ANNA

Osimo (AN), Italy

**eighteenth/nineteenth century**

HISTORICAL BUILDING BOUND  
BY THE ITALIAN SUPERINTENDENCE  
OF FINE ARTS

INTERIOR AND EXTERIOR RESTORATION

INTERIOR DESIGN

CONVERSION TO A LUXURY VILLA

# VILLA ANNA

Osimo (AN), Italy



# VILLA ANNA

Osimo (AN), Italy



# VILLA ANNA

Osimo (AN), Italy



# EX BANCA MARCHE\_Restoration for new Library

Camerino (MC), Italy



# SANCTUARY OF SANTA MARIA DEL GLORIOSO\_Restoration

San Severino Marche (MC), Italy



# CHURCH OF SANTA MARIA IN VARANO\_Restoration

Recanati (MC), Italy



# OPERA PIA GRIMANI-BUTTARI

ELDERLY HOSPITAL

Osimo (AN), Italy

**eighteenth/nineteenth century**

HISTORICAL BUILDING BOUND  
BY THE ITALIAN SUPERINTENDENCE  
OF FINE ARTS

INTERIOR AND EXTERIOR RESTORATION OF THE HISTORICAL BUILDINGS

CONSTRUCTION OF NEW EXTENSIONS

NEW SENSORY GARDEN FOR ALZHEIMER'S PATIENTS

FUNCTIONS ENHANCEMENT

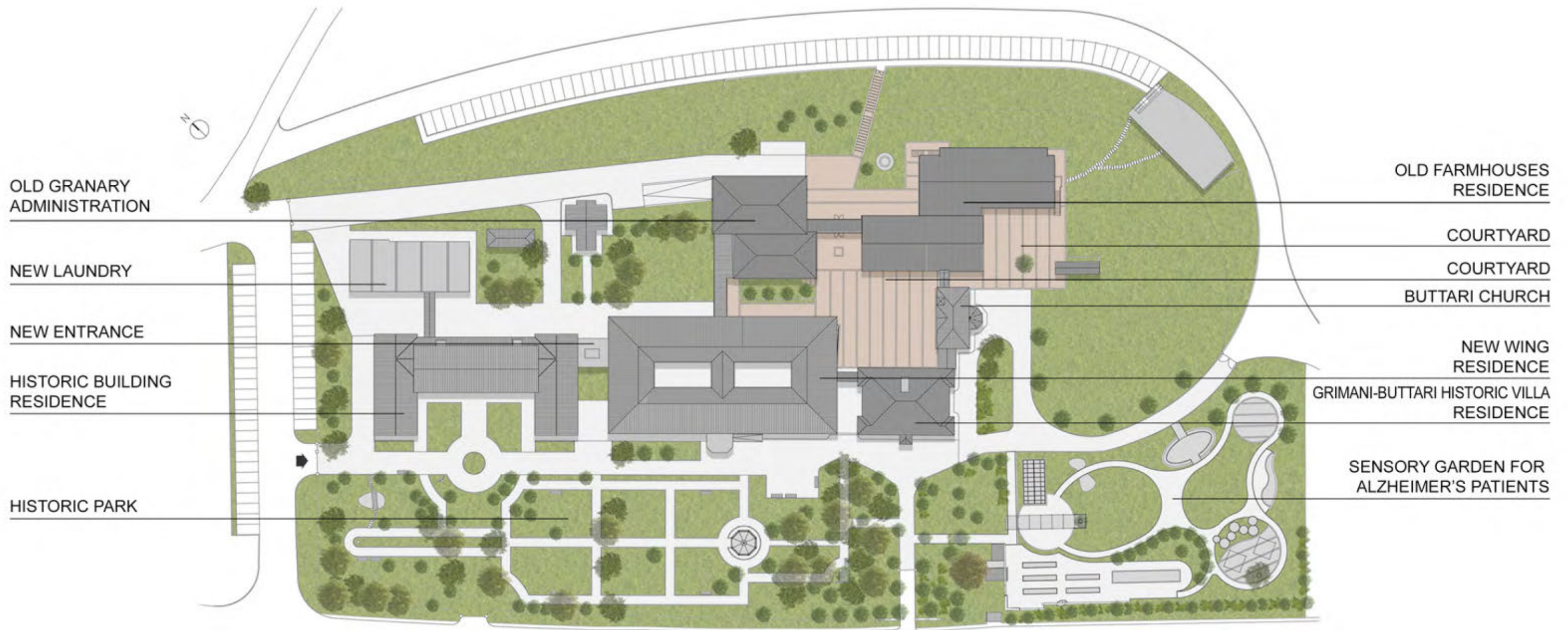
# OPERA PIA GRIMANI BUTTARI

Osimo (AN), Italy



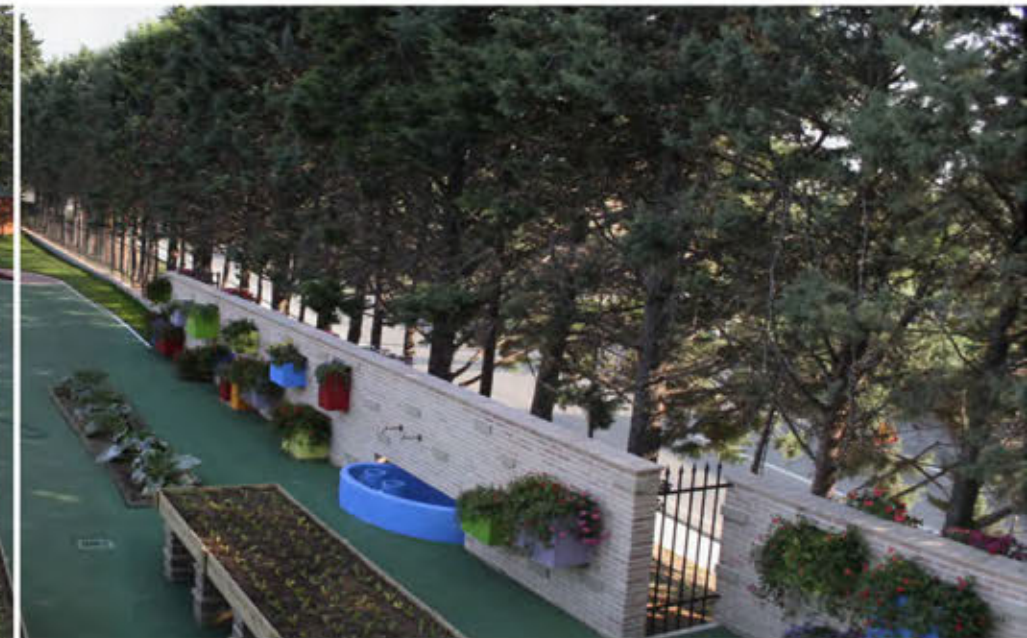
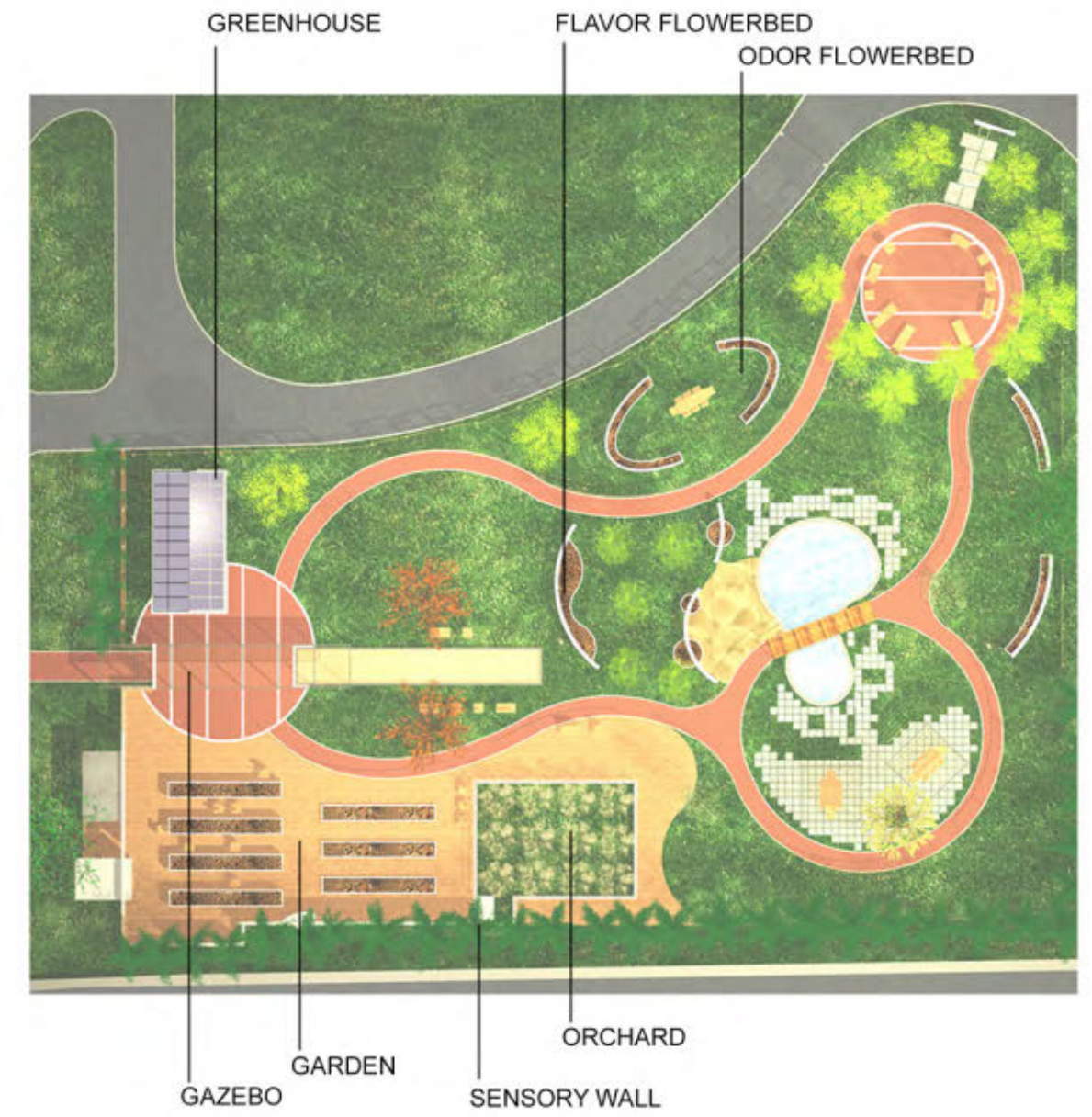
# OPERA PIA GRIMANI BUTTARI

Osimo (AN), Italy



# OPERA PIA GRIMANI BUTTARI

Osimo (AN), Italy



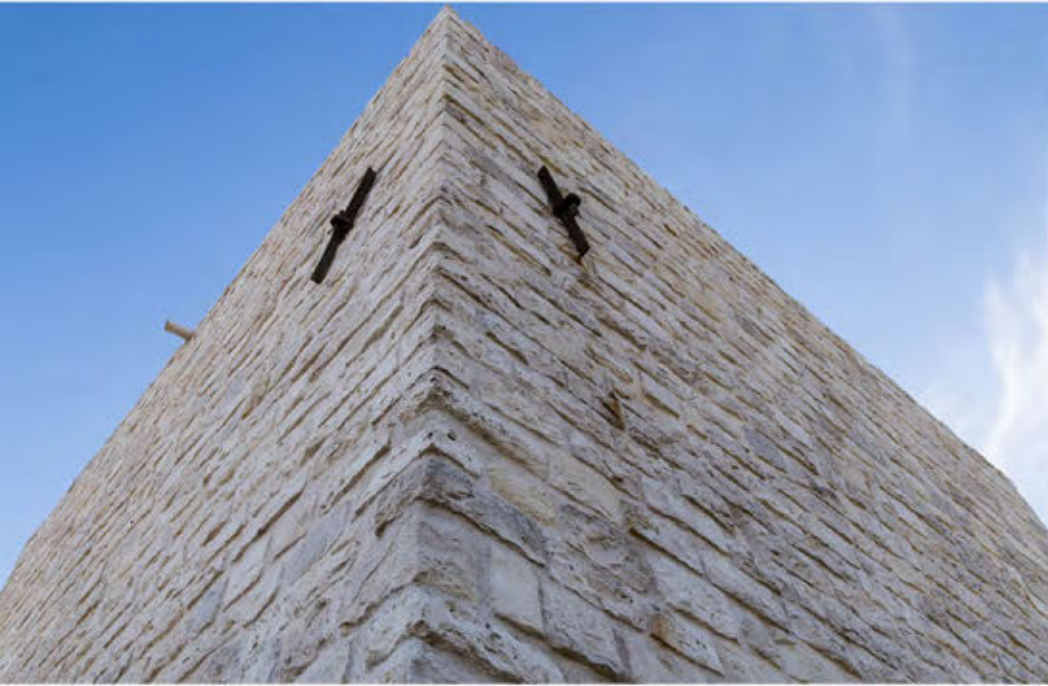
# OLD LIME OVEN \_ RESTORATION AND CONVERSION INTO A RESTAURANT

Osimo (AN), Italy



# OLD LIME OVEN \_ RESTORATION AND CONVERSION INTO A RESAURANT

Osimo (AN), Italy



# PALAZZO CAMPANA

Osimo (AN), Italy

— RESTORATION FOR REACTIVATION OF PUBLIC FUNCTIONS \_ MIXED USE  
BUILDING DAMAGED BY THE 2016 EARTHQUAKE IN CENTER ITALY

**FIMA**  
Architecture Design Engineering



# PALAZZO CAMPANA

Osimo (AN), Italy

RESTORATION FOR REACTIVATION OF PUBLIC FUNCTIONS \_ MIXED USE  
BUILDING DAMAGED BY THE 2016 EARTHQUAKE IN CENTER ITALY

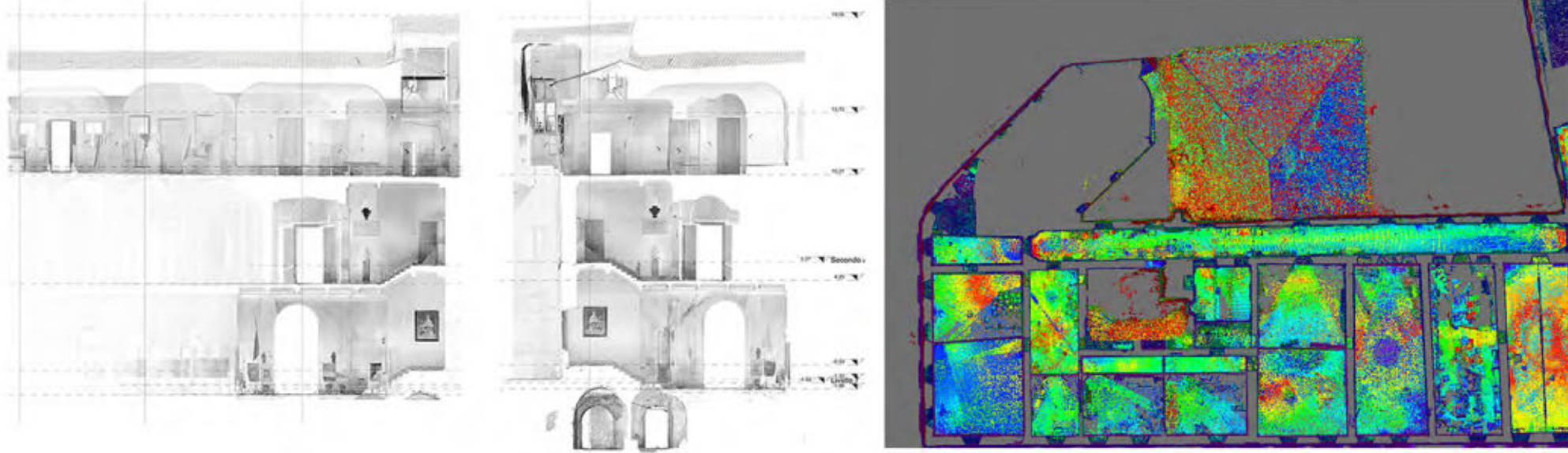


# PALAZZO CAMPANA

Osimo (AN), Italy

RESTORATION FOR REACTIVATION OF PUBLIC FUNCTIONS \_ MIXED USE  
BUILDING DAMAGED BY THE 2016 EARTHQUAKE IN CENTER ITALY

POINTS CLOUD SURVEY

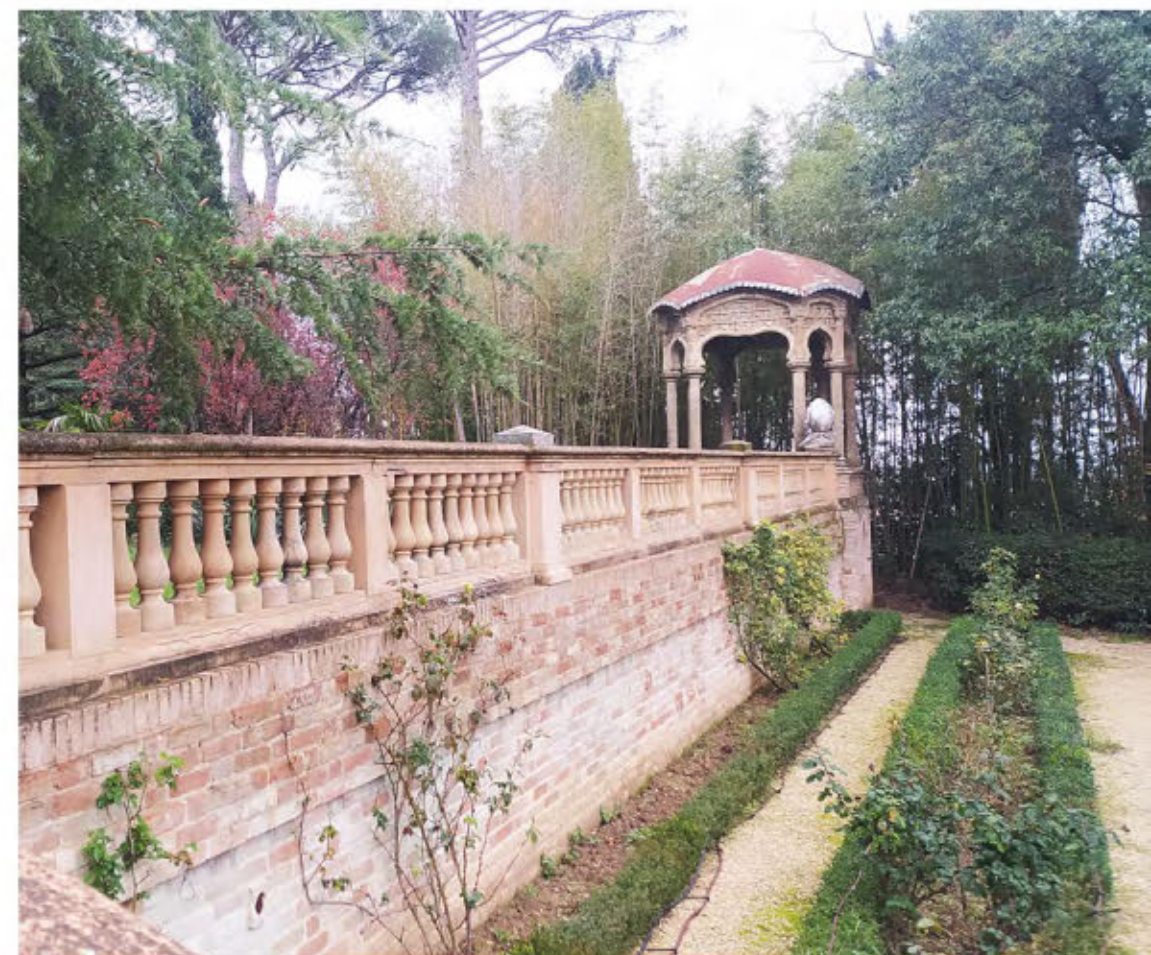


# VILLA DUE PINI

Osimo (AN), Italy

RESTORATION AND SEISMIC IMPROVEMENT

BUILDINGS DAMAGED BY THE 2016 EARTHQUAKE IN CENTER ITALY

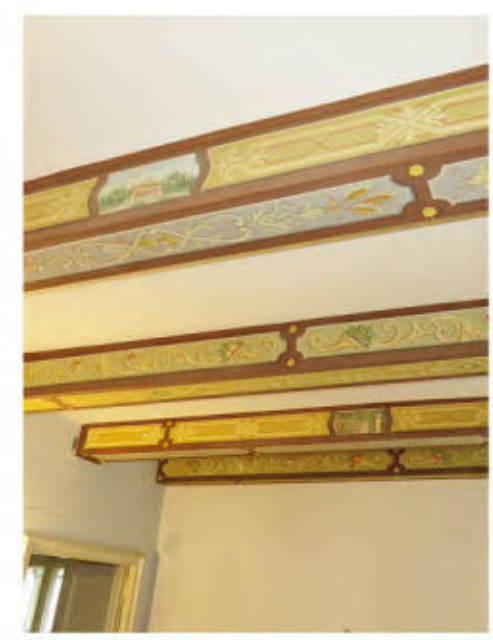


# VILLA DUE PINI

Osimo (AN), Italy

RESTORATION AND SEISMIC IMPROVEMENT

BUILDINGS DAMAGED BY THE 2016 EARTHQUAKE IN CENTER ITALY



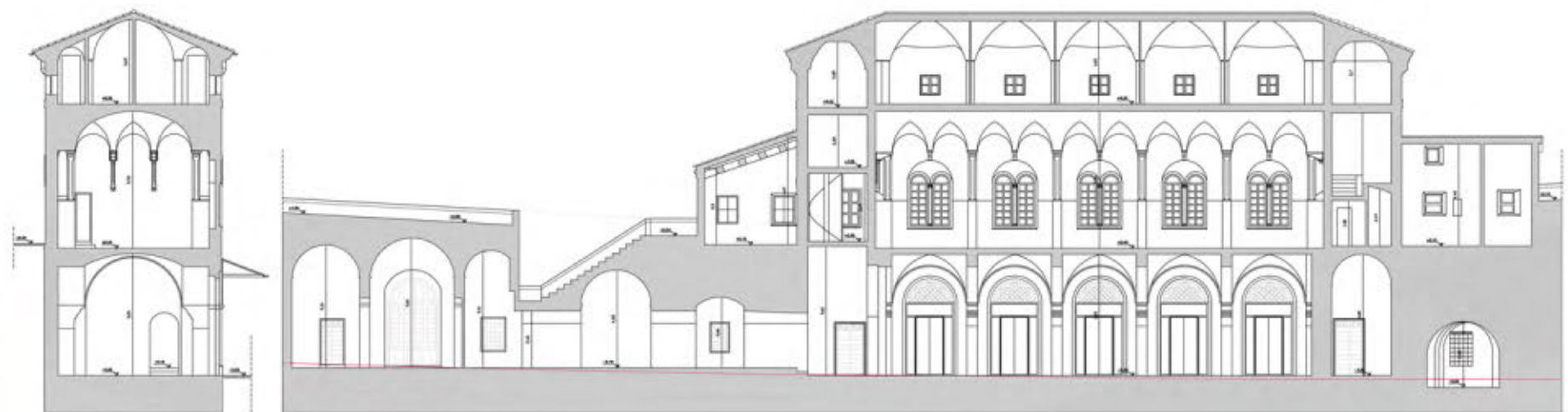
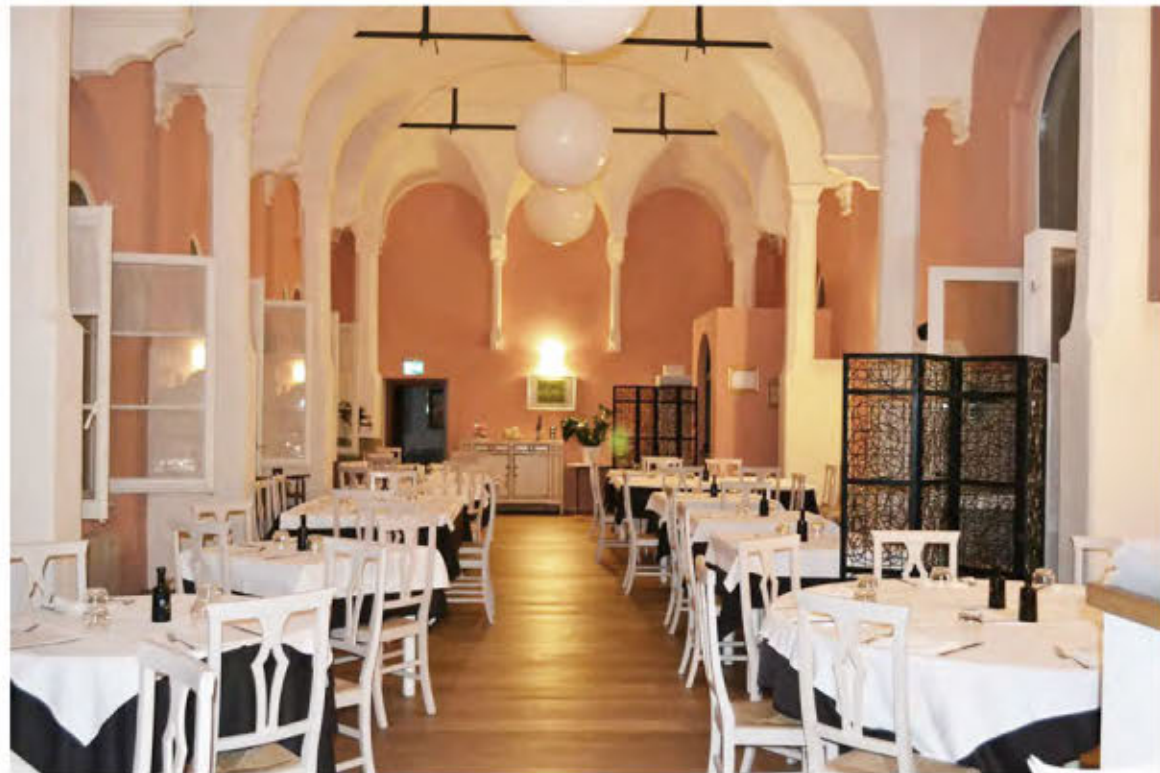
# OLD SLAUGHTERHOUSE \_ RESTORATION AND CONVERSION INTO A MIXED USE BUILDING \_ RESTAURANT AND RESIDENCES

Osimo (AN), Italy



# OLD SLAUGHTERHOUSE \_ RESTORATION AND CONVERSION INTO A MIXED USE BUILDING \_ RESTAURANT AND RESIDENCES

Osimo (AN), Italy



# AUTO-PALAZZO \_ RESTORATION AND CONVERSION INTO OFFICES

Macerata (MC), Italy



# AUTO-PALAZZO \_ RESTORATION AND CONVERSION INTO OFFICES

Macerata (MC), Italy



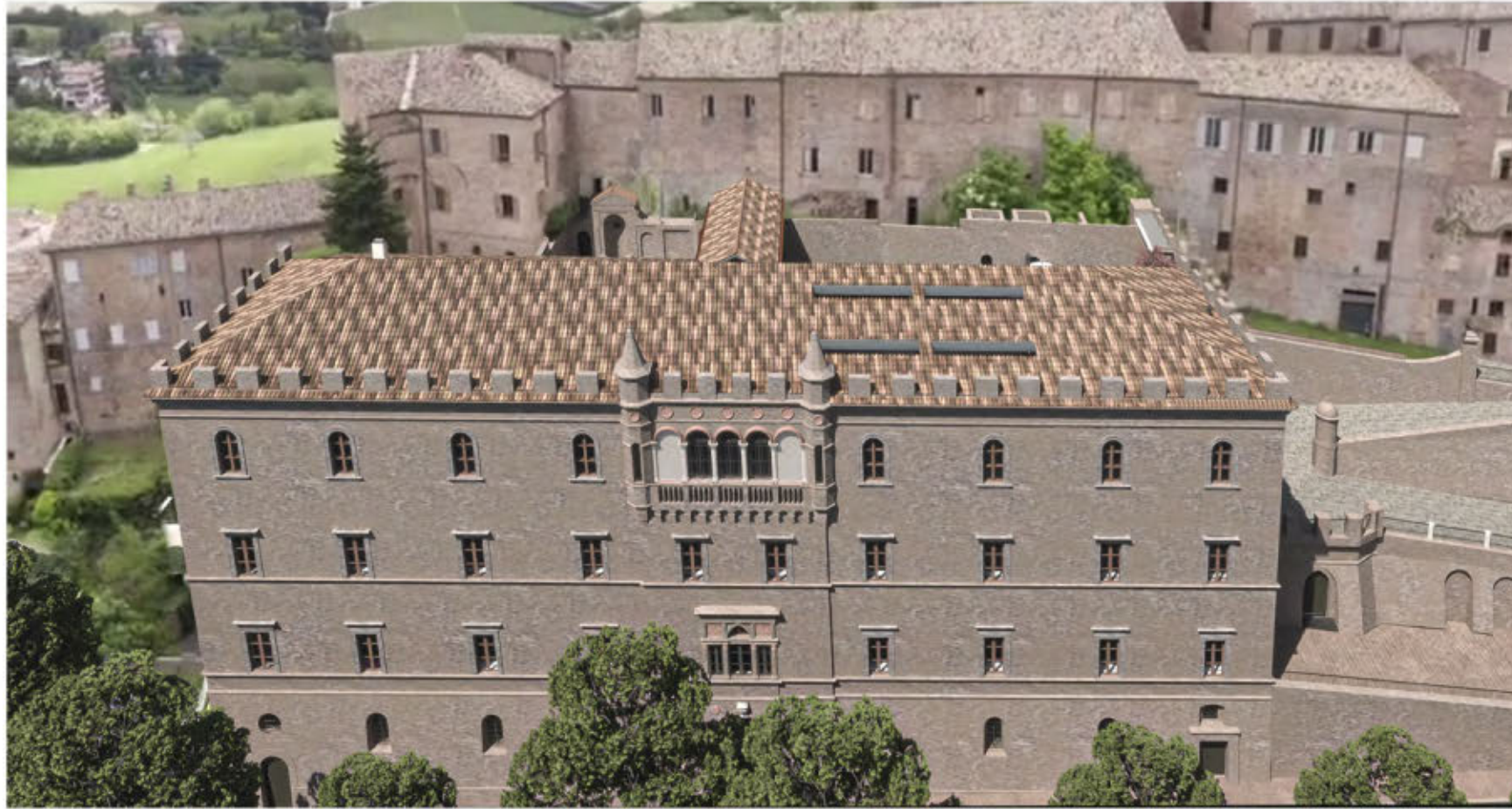
# PALAZZO SACCONI\_Restoration for new museum\_office and spa


Montalto delle Marche (AP), Italy



# PALAZZO SACCONI\_Restoration for new museum\_office and spa

Montalto delle Marche (AP), Italy





The logo for FIMA consists of the letters 'F', 'I', 'M', and 'A' in a bold, black, sans-serif font. The 'F' is composed of two horizontal bars of equal length, with the top bar being slightly longer than the bottom bar. The 'I' is a simple vertical bar. The 'M' is a simple, blocky letter. The 'A' is a simple, blocky letter with a small horizontal bar at the bottom right.

Architecture Design Engineering

P.zza F.lli Rosselli 11  
Osimo\_AN\_ITALY  
info@fimastudio.it  
www.fimastudio.it