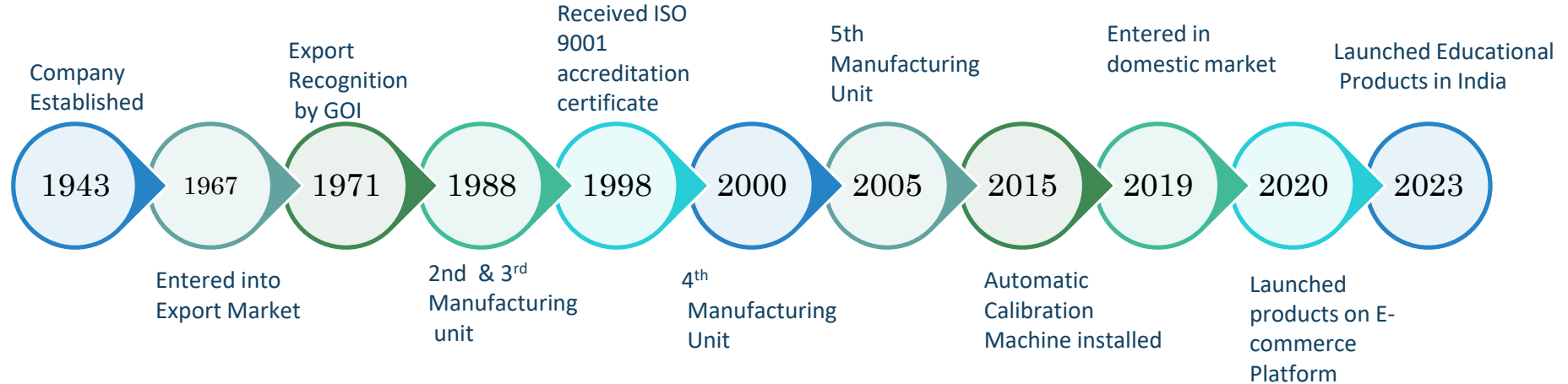


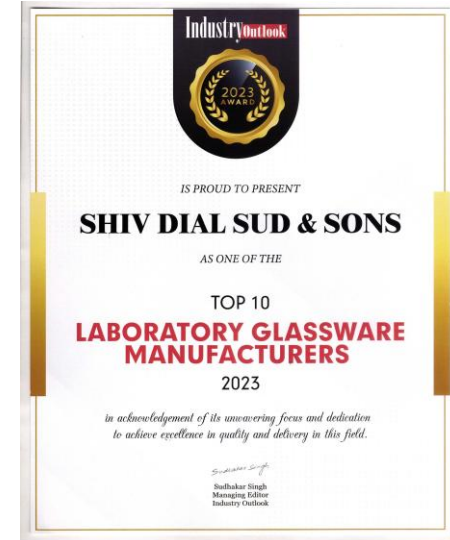
Shiv Dial Sud & Sons

Adding Value To Your Lab Processes

A Journey Built on Vision and Progress



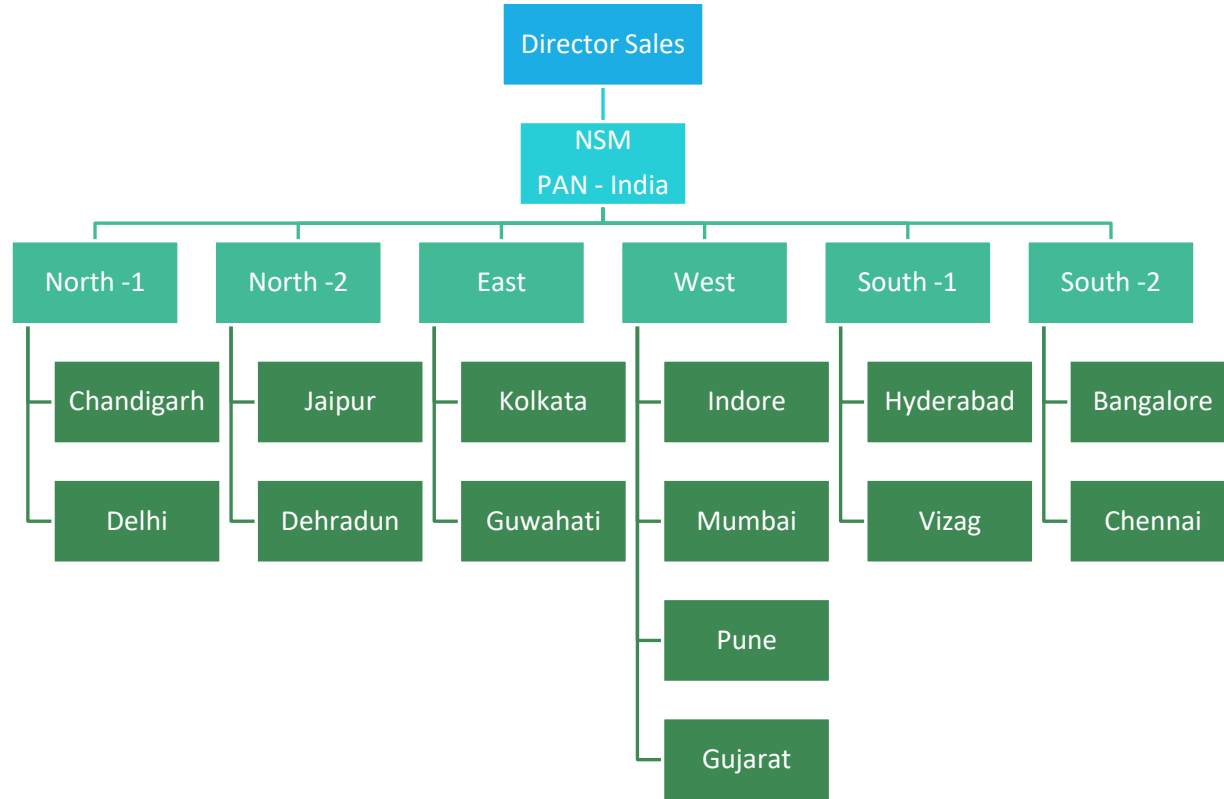
Certificates & Awards



Management Team Overview

- **Arvind Sood** - B.Tech (Electronics) from IIT Kharagpur
- **Anil Sood** - B. Tech (Electrical) from PEC, Chandigarh
- **Ajay Sood** - M. Sc (Hons.) from PU, Chandigarh
- **Alok Sood** - MBA from HSB, G.J. Tech. Univ.
- **Ankur Sood** - B.Tech (Electronics) & Masters from University of Pennsylvania, U.S.A.
- **Ketan Sood** - B. Tech (Bio Tech.) & MBA from Symbiosis, Pune

India Sales Leadership Structure



What sets supertek apart from others?



Domestic Overview

25+ Sales Persons across India

Supplying to 110+ Pharma companies

Supplying to 60+ renowned Research Institutes



Business Segments

Education

- Physics Lab
- Chemistry Lab
- Biology & Earth Science Lab
- Xperimenter Theme Kits

Brew Lab

- Planters
- Barware
- Kitchenware

Labware

- Laboratory Glassware
- Laboratory Essentials
- Laboratory Equipment
- Laboratory Plasticware

Educational Products

After being successful in the international market for the last 8 decades, we have launched our Educational Products in India to enhance the science learning experience. Our mission is to provide Schools & Universities with the highest quality products at affordable prices.

Product Range-

- Physics Lab
- Chemistry Lab
- Biology & Earth Science Lab
- Xperimenter Theme Kits



700+ Sku's – Physics

250+ Sku's – Biology

38+ Sku's – Higher science

Wide range of theme Kits



Our Focus

30+ Ongoing Projects

25+ Higher Science products

20+ Theme Kits

Labware

Glassware
SKU's – 3000+

Plasticware
SKU's – 500+

Essentials
SKU's – 650+

Equipment
SKU's – 250+



Infrastructure and Operational Capabilities

Glassware - Operational Capabilities

3000+ SKU's

11 calibration stations with a daily capacity of over 10,000 units

In house NABL Accredited Calibration Laboratory

Comprehensive Quality Management System



Glassware Facility

Manpower



- ☐ 45+ Trained glass blowers
- ☐ 15 Proficient blowers
- ☐ 25 Machine operators

Machinery



- ☐ 31 Double-Chuck Machines
- ☐ 10 Single-Chuck Machines
- ☐ 15 Specialized Blowing Workstations

Automation



- ☐ 11 Semiautomatic Machines
- ☐ 5 Fully automatic machines
- ☐ Glassware annealing furnace with increased capacity

Manufacturing Capabilities



Production capacity of
9000 units/day



Annealing capacity
increased by 3X



Fully automatic printing
machines



Newly installed QR coded
machines



Automatic beaker
machine



Calibration Machine

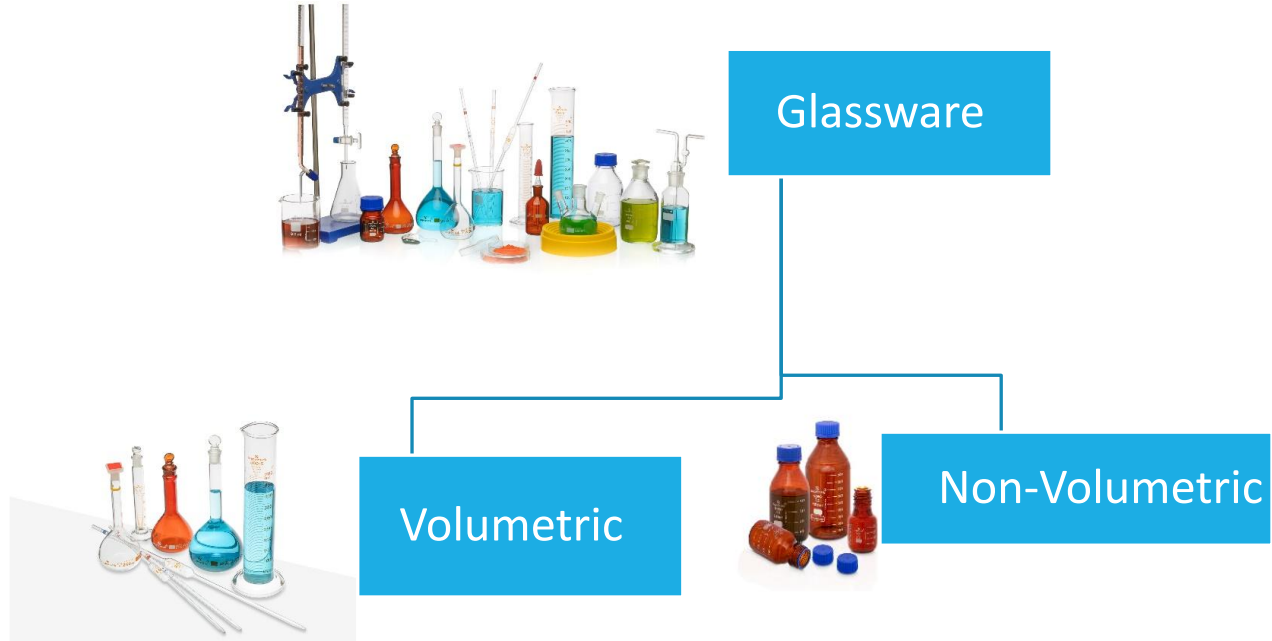


Automatic Calibration
Machines



Double Station
Volumetric Calibration

Laboratory Glassware



Volumetric Glassware

- Volumetric Flask
- Measuring Cylinder
- Pipettes – Volumetric/Graduated
- Burettes



*** All products are available in Class A and Class B**

Non Volumetric Glassware



Beaker



Bottle - Amber



Conical



Bottle



Round Bottom Flask

Plasticware – Operational Capabilities

- **Automatic Blow Molding Machine** – For Producing Pasteur Pipettes, Volumetric Flasks
- **Automatic Injection Molding Machine** – For Manufacturing Beakers, Cylinders, Funnels
- **In-house Tool Room** – Equipped With Surface Grinding, Milling, Lathe, Cylindrical Grinding
- **CNC Lathe** - Computer-controlled machine for precise turning
- **VMC Machine** - CNC machine for vertical milling



Laboratory Plasticware

500+ Sku's

Inhouse Mould prepare/Polishing

Inhouse Tool Room Facility

OEM supply to well known brands

Equipped with fully automatic machines



**PMP Ware -
Manufacturing**



**Pasteur
Pipettes**



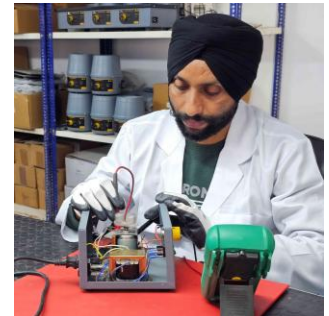
**Ease of
Customization**



**Class A/ NABL
calibration
available**

Equipment - Operational Capabilities

- **Sheet Metal Fabrication:** Shaping and forming metal sheets
- **Tool Room:** Workshop for precision tools
- **Stud Welding Machine:** Welding metal studs to surfaces
- **PCB Soldering Machine:** Joining components on circuit boards
- **Wire Cutting Machine:** Cutting wires to specific lengths



Laboratory Equipment

250+ Sku's

Trained technicians and R&D team

1 Year warranty with all equipment

Comprehensive Equipment Services

Scheduled sales & services training



Product Portfolio - Heating



Laboratory Oven



Hot Plate



Triple – Water Bath



Heating Mantle -
Multipositions



Ultrasonic Bath

Laboratory Equipment – Stirring/Mixing



Vortex Mixer



Magnetic Stirrer



Heating Mantle with stirrer

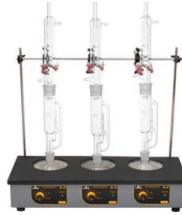


Hot Plate with Magnetic Stirrer

Laboratory Equipment – New Launched



Infrared Kjeldahl
Digestion



Soxhlet Extraction Apparatus



Melting Point
Apparatus



COD Digestion Unit

Comprehensive Reference List

Hot Plates

Hot Plate with stirrers

Heating Mantle

Heating Mantle with stirrers

Heating Mantle Multipositions

Vortex Mixer

Digital Autoclave, Oven

Laboratory Incubator

UV Cabinet

UV sanitization chamber

Water Bath, Digital

Triple Water baths

Ultrasonic Baths



Our Commitment to Quality



- NABL Certification
- CE Certified
- ISO Certified
- BIS Certification



Trusted OEM Partner

- Delivering premium OEM solutions for globally renowned brands
- Expertise in manufacturing to the highest industry standards
- Trusted partner with a proven record of successful collaborations
- Ensuring confidentiality and brand integrity in every partnership
- Comprehensive support from product development to final delivery

Success Stories - Domestic

- 35+ class A pharma companies trust supertek products
- More than 50 research institutes regularly order supertek products
- Large number of educational & research institutions are on RC with supertek
- Large industrial customers & testing houses demand supertek products



Success Stories - International

Halo Pharma

Ministry of Health, Bahrain

University of Toronto

Ministry of Health - Iraq

Ethiopian Pharmaceutical supply service

Candoo Pharmatech company

Contract pharmaceutical limited

Concordia University

Geneva Laboratories

Baxter

McGill University



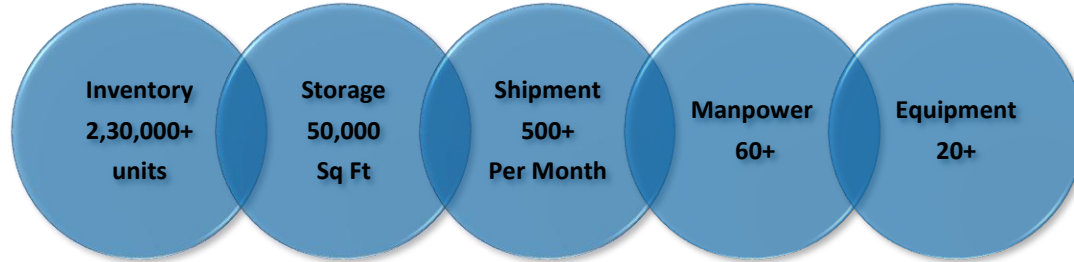
Baxter



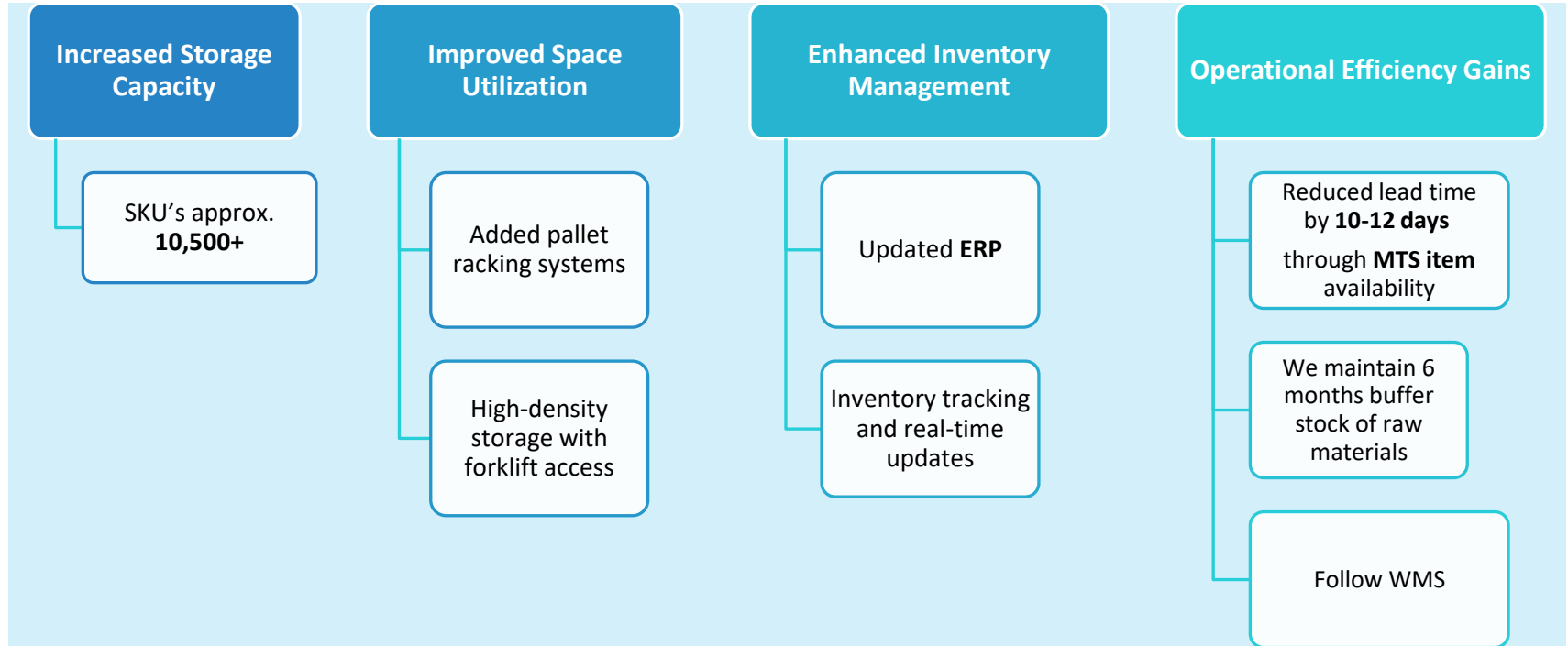
ብሔራዊ የእንስሳት ጤና ጥበቃ ኢንስቲትዩት
NATIONAL VETERINARY INSTITUTE (NVI)

A Center of Excellence in Veterinary Vaccine Production!!
NVI Ethiopia

Warehousing Depot



Warehouse Enhancements



Exhibition Presence - Domestic



Cphi – Pmec - Noida



ILE - Hyderabad



India Lab Expo - Mumbai



Asia Lab Ex – Gandhinagar

Exhibition Presence - Export



Achema – Germany



Analytica - Germany

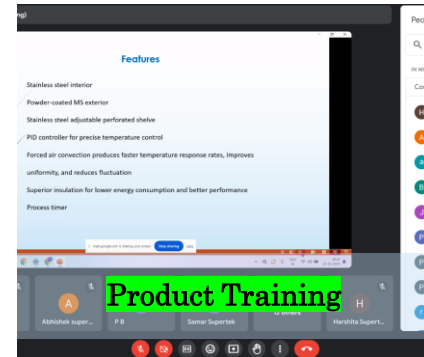
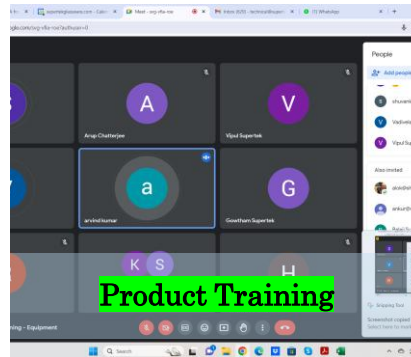


Arab Lab - Dubai



World Didac –Switzerland

Workforce Development



Team Building Activity



Corporate Social Responsibility



- Annual Blood Donation Camp
- Frequently Plantation Drive
- Active member of Rotary Hospital
- **Active Supporter**
 1. Sneh Sparsh
 2. Roti Bank
 3. Vrikshit Foundation

Thank You!!