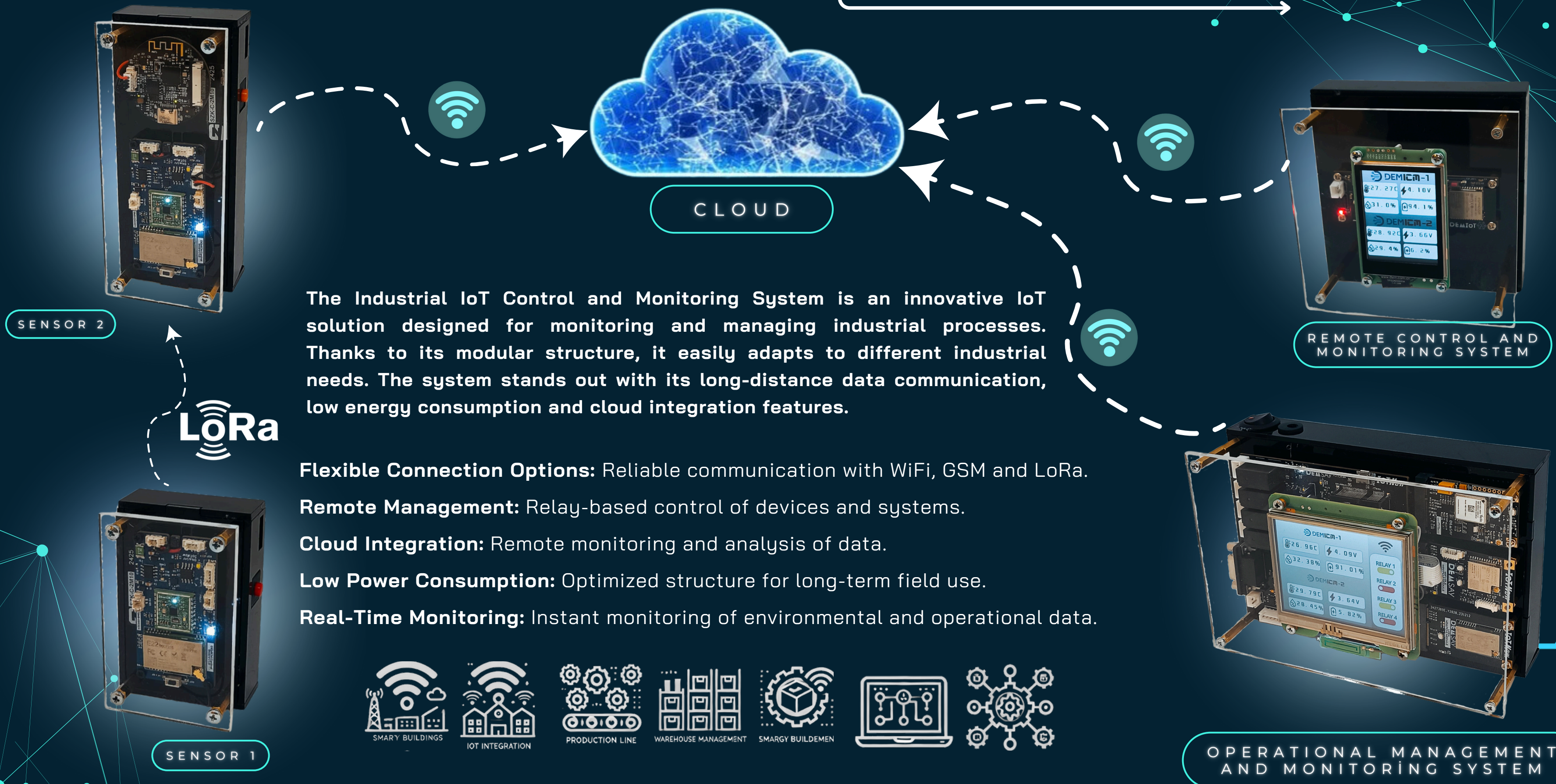


# DEMSAY EdgeIoT IIoT Control and Monitoring System





# DEMSAY EdgeIoT DEMICM Sensor Module



DEMSAY'S LOW ENERGY IC MODULE, POWERED BY THE ARM CORTEX M0+ ARCHITECTURE, COMBINES HIGH PERFORMANCE AND ENERGY EFFICIENCY, MAKING IT IDEAL FOR MODERN TECHNOLOGY NEEDS. FEATURING A TEMPERATURE AND HUMIDITY SENSOR, 3-AXIS ACCELEROMETER, AND LORA MODULE, IT ENABLES PRECISE DATA COLLECTION AND LONG-RANGE COMMUNICATION. WITH ITS SINGLE-CELL BATTERY CHARGER, BATTERY MONITORING IC, SPI INTERFACE, AND RS485 CONNECTION, IT ENSURES EFFICIENT ENERGY MANAGEMENT AND SEAMLESS INTEGRATION. COMPACT AND VERSATILE, DEMSAY'S TECHNOLOGY IS PERFECT FOR IOT PROJECTS, SMART SYSTEMS, AND INDUSTRIAL APPLICATIONS.

**Geehy**  
SEMICONDUCTOR

**HOPERF**

[WWW.DEMSAY.COM](http://WWW.DEMSAY.COM)



# DEMSAY EdgeIoT DEMICM - DEMCLOUD Sensor and Connection Module



DEMSAY'S LOW ENERGY IC MODULE, POWERED BY THE ARM CORTEX M0+ ARCHITECTURE, COMBINES HIGH PERFORMANCE AND ENERGY EFFICIENCY, MAKING IT IDEAL FOR MODERN TECHNOLOGY NEEDS. FEATURING A TEMPERATURE AND HUMIDITY SENSOR, 3-AXIS ACCELEROMETER, AND LORA MODULE, IT ENABLES PRECISE DATA COLLECTION AND LONG-RANGE COMMUNICATION. WITH ITS SINGLE-CELL BATTERY CHARGER, BATTERY MONITORING IC, SPI INTERFACE, AND RS485 CONNECTION, IT ENSURES EFFICIENT ENERGY MANAGEMENT AND SEAMLESS INTEGRATION. COMPACT AND VERSATILE, DEMSAY'S TECHNOLOGY IS PERFECT FOR IOT PROJECTS, SMART SYSTEMS, AND INDUSTRIAL APPLICATIONS. THE DEMCLOUD SENSOR PROVIDES A COMPACT AND VERSATILE SOLUTION FOR ENVIRONMENTAL MONITORING AND IOT APPLICATIONS. IT FEATURES A USB TYPE-C CONNECTION, TEMPERATURE AND HUMIDITY SENSOR, 3-AXIS ACCELEROMETER, AND AUDIO SENSOR. WITH EXTERNAL UART, CAMERA, AND UFL ANTENNA CONNECTIONS, IT SUPPORTS SEAMLESS EXPANDABILITY. ITS ONBOARD LITHIUM BATTERY CHARGING CIRCUIT ENSURES EFFICIENT POWER MANAGEMENT.

**Geehy**  
SEMICONDUCTOR

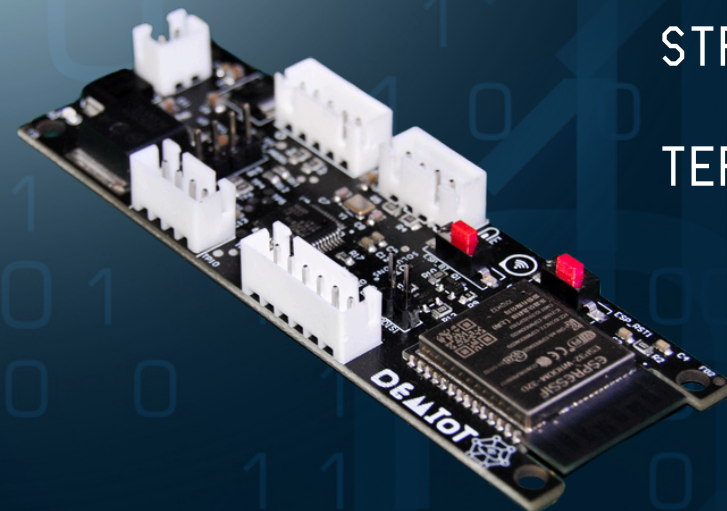
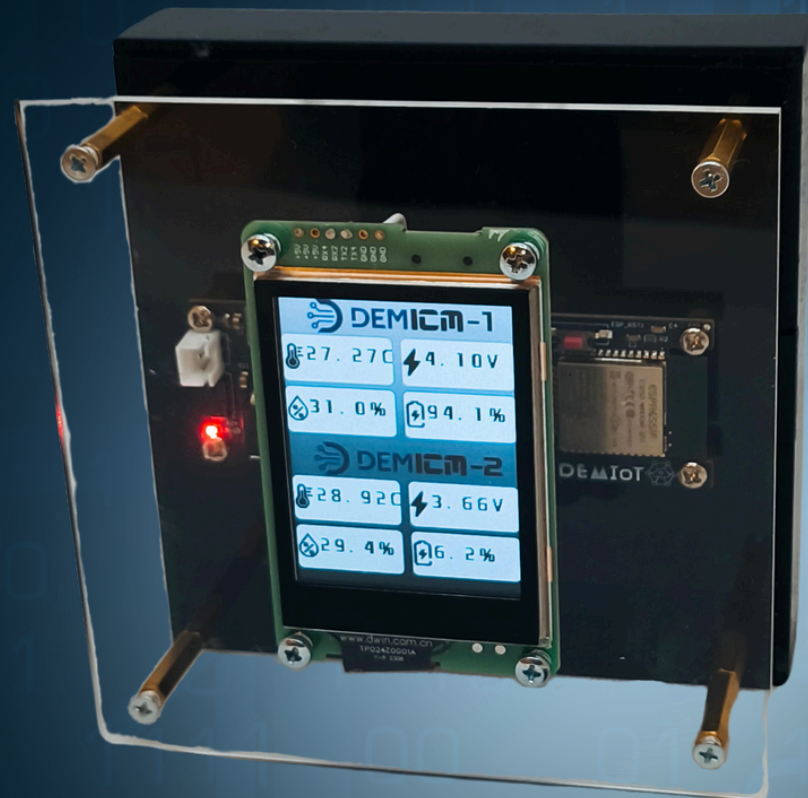


**ESPRESSIF HOPERF**

[WWW.DEMSAY.COM](http://WWW.DEMSAY.COM)



# DEMSAY EdgeIoT Remote Control and Monitoring System



THE WIRELESS CONTROL PANEL AND MONITORING MODULE IS AN INNOVATIVE SOLUTION DESIGNED FOR MONITORING AND MANAGING INDUSTRIAL PROCESSES. THIS MODULE ALLOWS REAL-TIME MONITORING OF CRITICAL PARAMETERS SUCH AS TEMPERATURE, HUMIDITY, AND BATTERY STATUS. IT OFFERS INSTANT VIEWING AND MANAGEMENT OF ALL SYSTEM STATUSES WITH ITS USER-FRIENDLY 2.3-INCH SCREEN. IT COMMUNICATES SEAMLESSLY THANKS TO WIFI AND BLUETOOTH INTEGRATION AND HAS AN EXPANDABLE STRUCTURE WITH EXTERNAL SENSOR SUPPORT. IT IS SUITABLE FOR LONG-TERM FIELD APPLICATIONS WITH ITS ENERGY-EFFICIENT STRUCTURE.

**Geehy**  
SEMICONDUCTOR



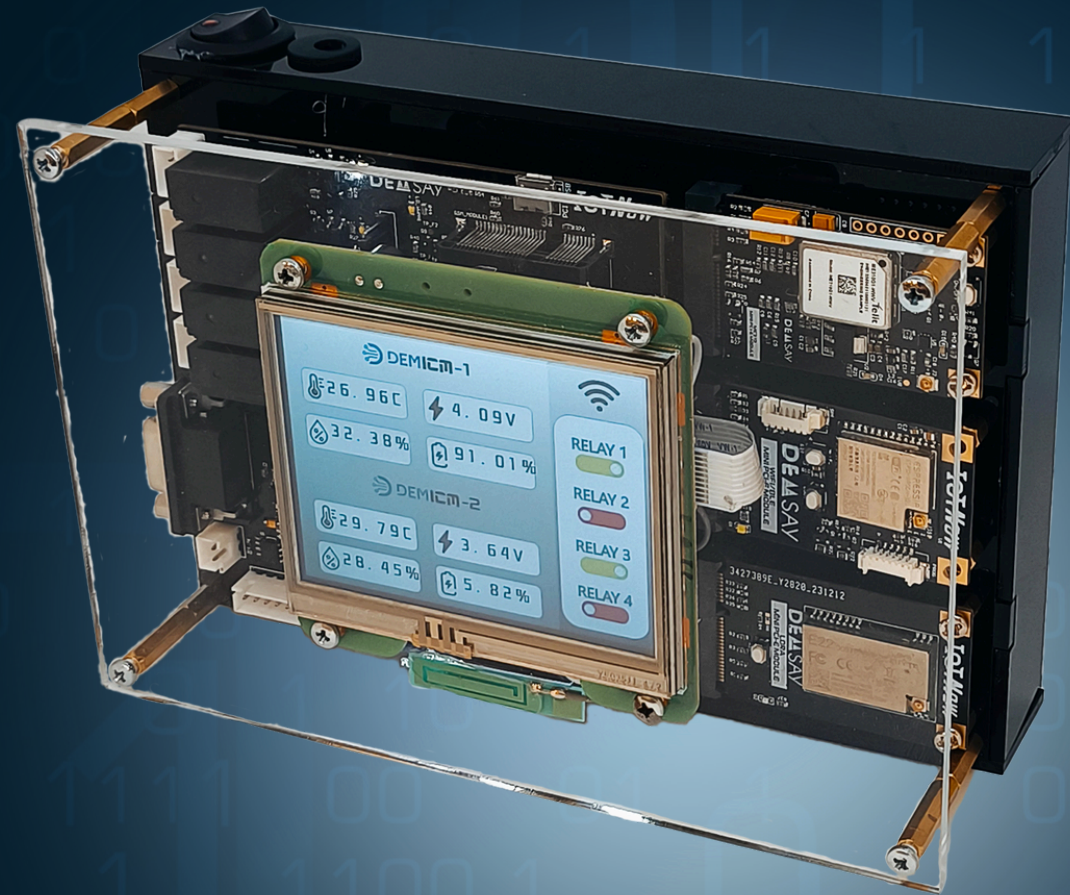
**ESPRESSIF**



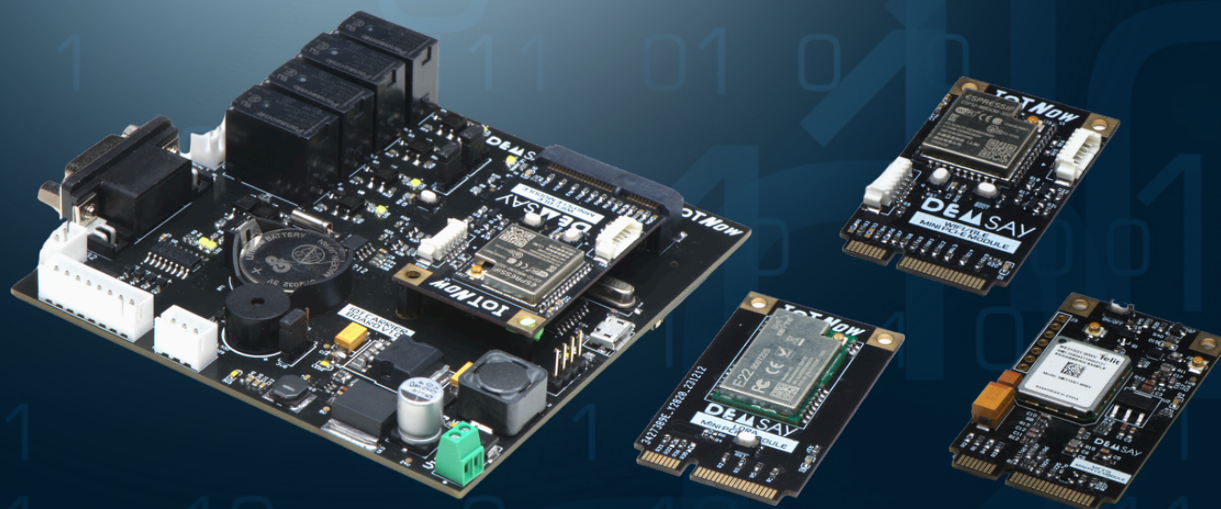
[WWW.DEMSAY.COM](http://WWW.DEMSAY.COM)



# DEMSAY EdgeIoT Operational Management and Monitoring System



THE IOT CARRIER BOARD IS DESIGNED FOR USE IN INDUSTRIAL WIRELESS COMMUNICATION PROJECTS. WITH SUPPORT FOR MINI PCI-E COMPATIBLE MODULES, IT PROVIDES CONNECTIVITY FOR THE MPCIE FORM 2G-NB IOT CATM1 + GPS/GNSS GSM MODULE AND BLE-WIFI MODULE. IT FEATURES 4 RELAY OUTPUTS, RS232 CONNECTION, EXTERNAL UFL ANTENNA CONNECTION, ISOLATED POWER INPUT SUPPORTING UP TO 40V, AND A MICRO USB CONNECTION.



[WWW.DEMSAY.COM](http://WWW.DEMSAY.COM)

**Geehy**  
SEMICONDUCTOR

**CAVLI**  
wireless



**ESPRESSIF**

**HOPERF**