



GENERAL OVERVIEW

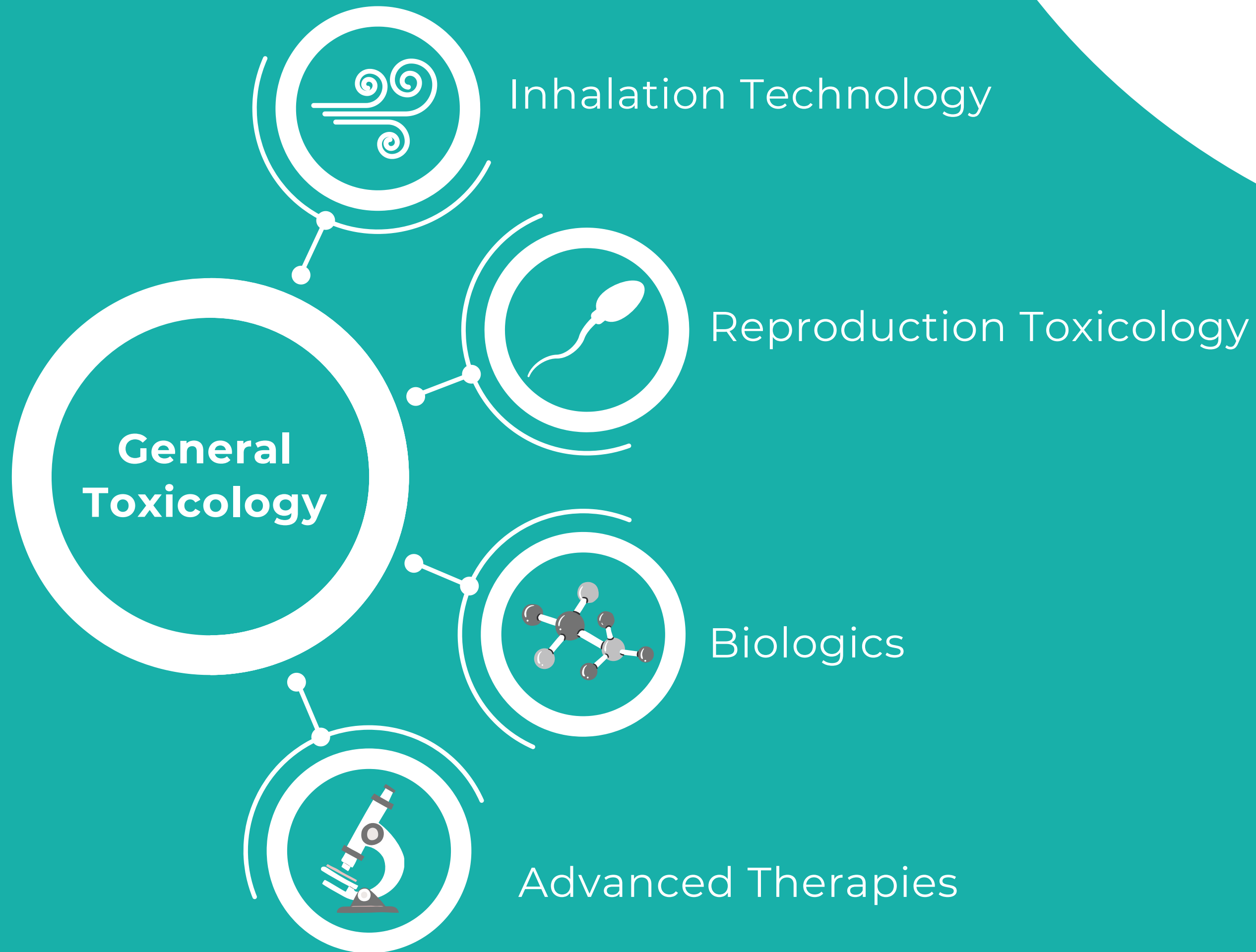


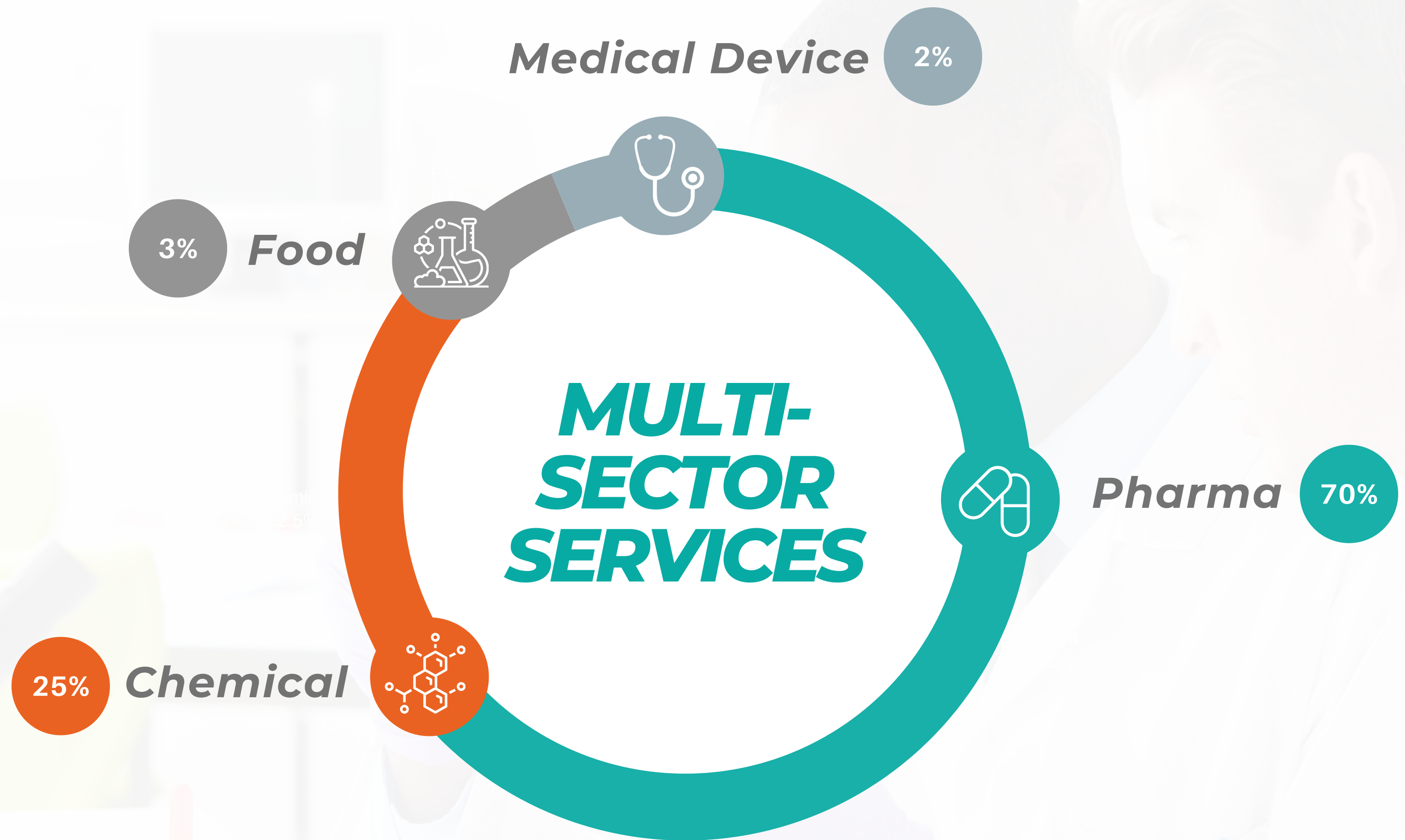


CONTRACT RESEARCH ORGANIZATION

- Founded in 2000
- +4000 studies performed
- Over 200 employees
- GLP Certified since 2003
- In Vivo toxicological studies

AREAS OF EXPERTISE

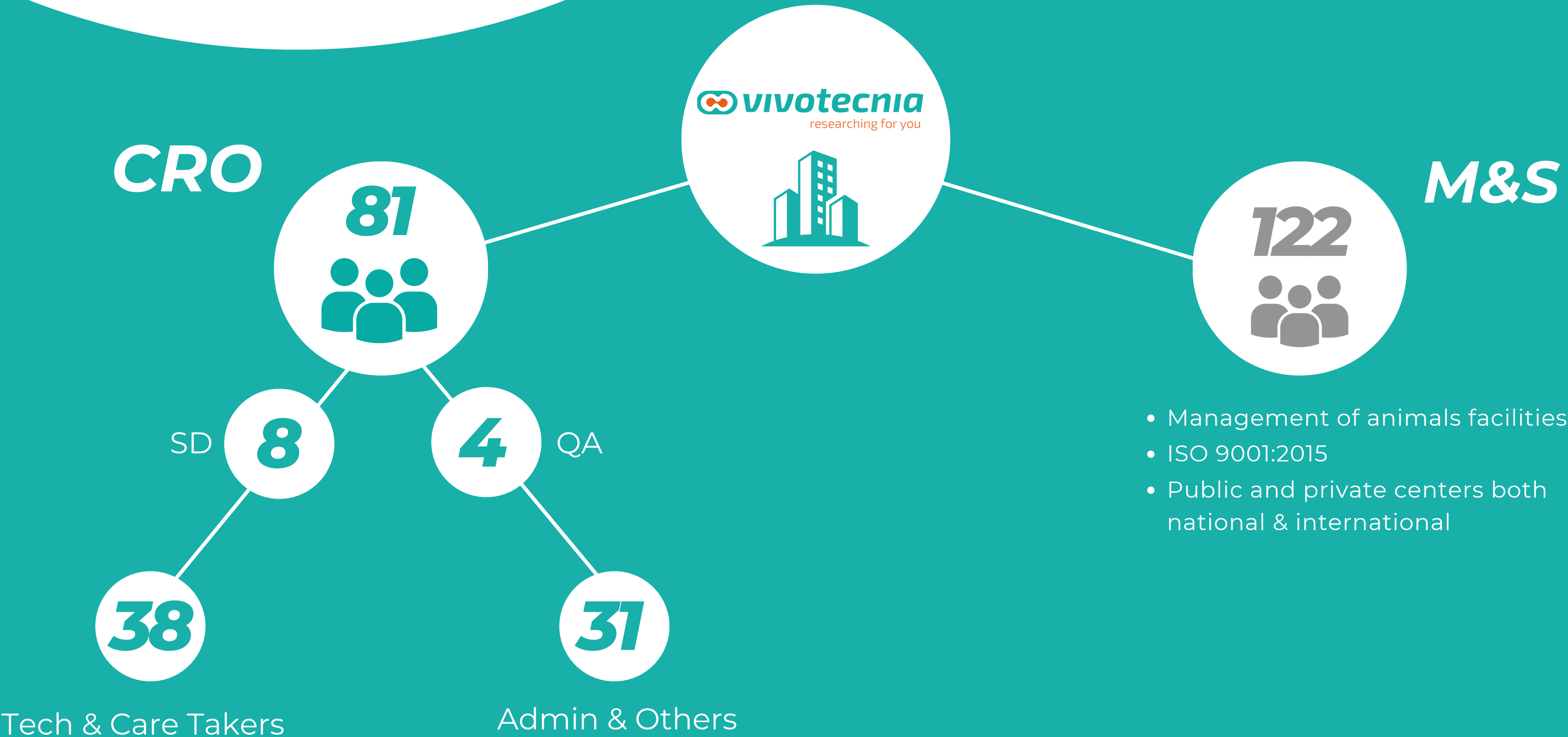




WHERE OUR CUSTOMERS COME FROM



OUR ORGANIZATION



ETHICAL ANIMAL TESTING

- Commitment to animal welfare and 3Rs
- Fully compliant with European directives regarding animal welfare
- Environmental enrichment

Replace

Animal studies with non-animal methods

If not possible

Reduce

Animal studies to minimum required and necessary

In addition

Refine

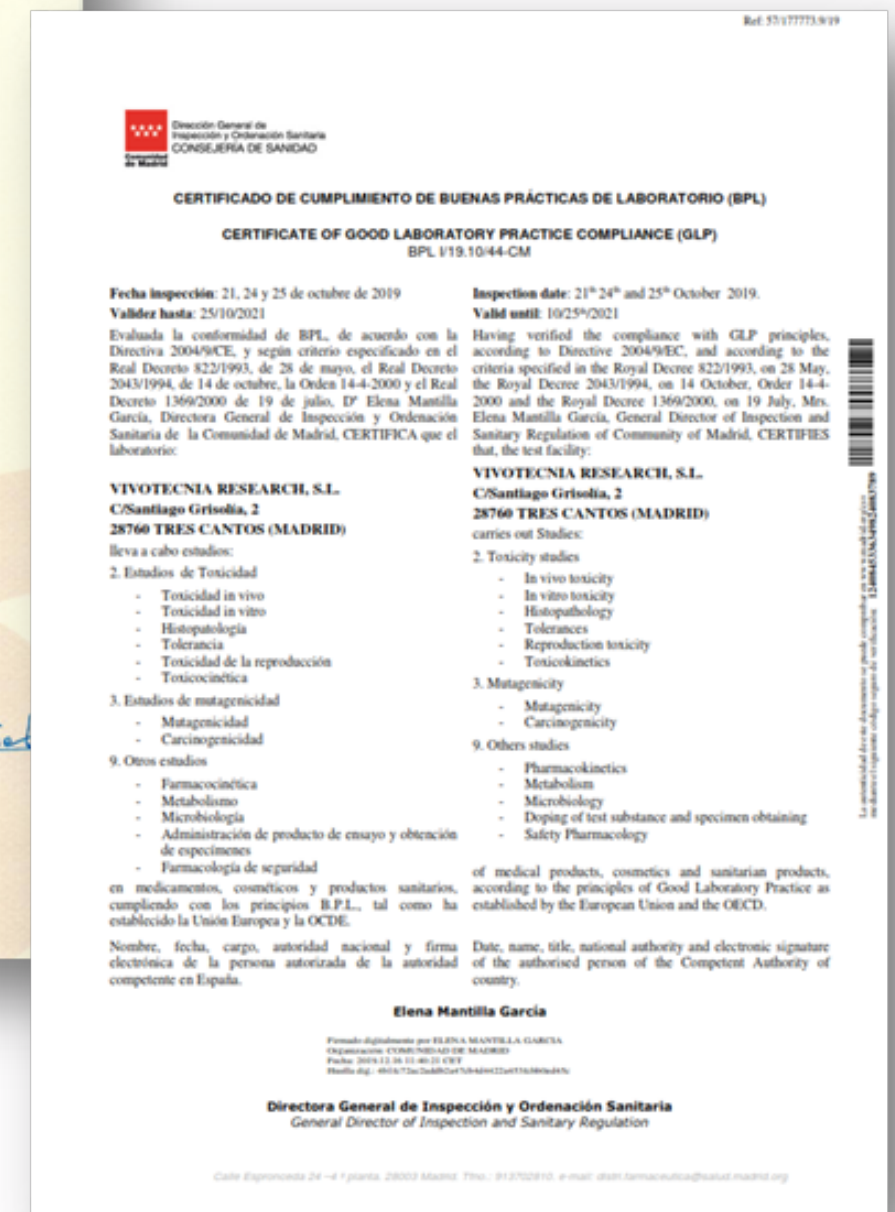
Practices to minimize stress of study animals

GOOD LABORATORY PRACTICE

- Certified since 2003
- Provantis Preclinical Software
- Electronic SOP system for:
 - Rapid access
 - Scheduled and on-demand online revisions
 - On-line training and evaluation of staff



QUALITY ASSURANCE



ROUTES OF ADMINISTRATION

Routes						
Inhalation	✓	✓	✓	✓	✗	✗
Oral	✓	✓	✓	✓	✓	✓
Intravenous	✓	✓	✓	✓	✓	✓
Subcutaneous	✓	✓	✓	✓	✓	✓
Intramuscular	✓	✓	✓	✓	✓	✓
Others	✓	✓	✓	✓	✓	✓

SERVICES STUDY TYPES

GENERAL TOXICOLOGY

- DOSE RANGE FINDING (DRF)
- MAXIMUM TOLERATED DOSE (MTD)
- REPEATED DOSE STUDIES
- CARCINOGENICITY STUDIES

GENOTOXICITY & MUTAGENICITY

- AMES TEST
- IN VITRO CHROMOSOME ABERRATION
- MICRONUCLEUS TEST
- CHROMOSOME ABERRATION

REPRODUCTION TOXICOLOGY

- OECD 414
- OECD 416
- OECD 421
- OECD 422
- SEGMENT I
- SEGMENT II
- SEGMENT III

SAFETY PHARMACOLOGY

- HERG
- CARDIOVASCULAR ASSESMENT TELEMETRY
- HEAD-OUT PLETHYSMOGRAPHY
- PRIMARY OBSERVATION (IRWIN)

PHARMACOKINETICS

- PHARMACOKINETICS PROFILE IN RODENTS
- PHARMACOKINETICS PROFILE IN NON-RODENTS

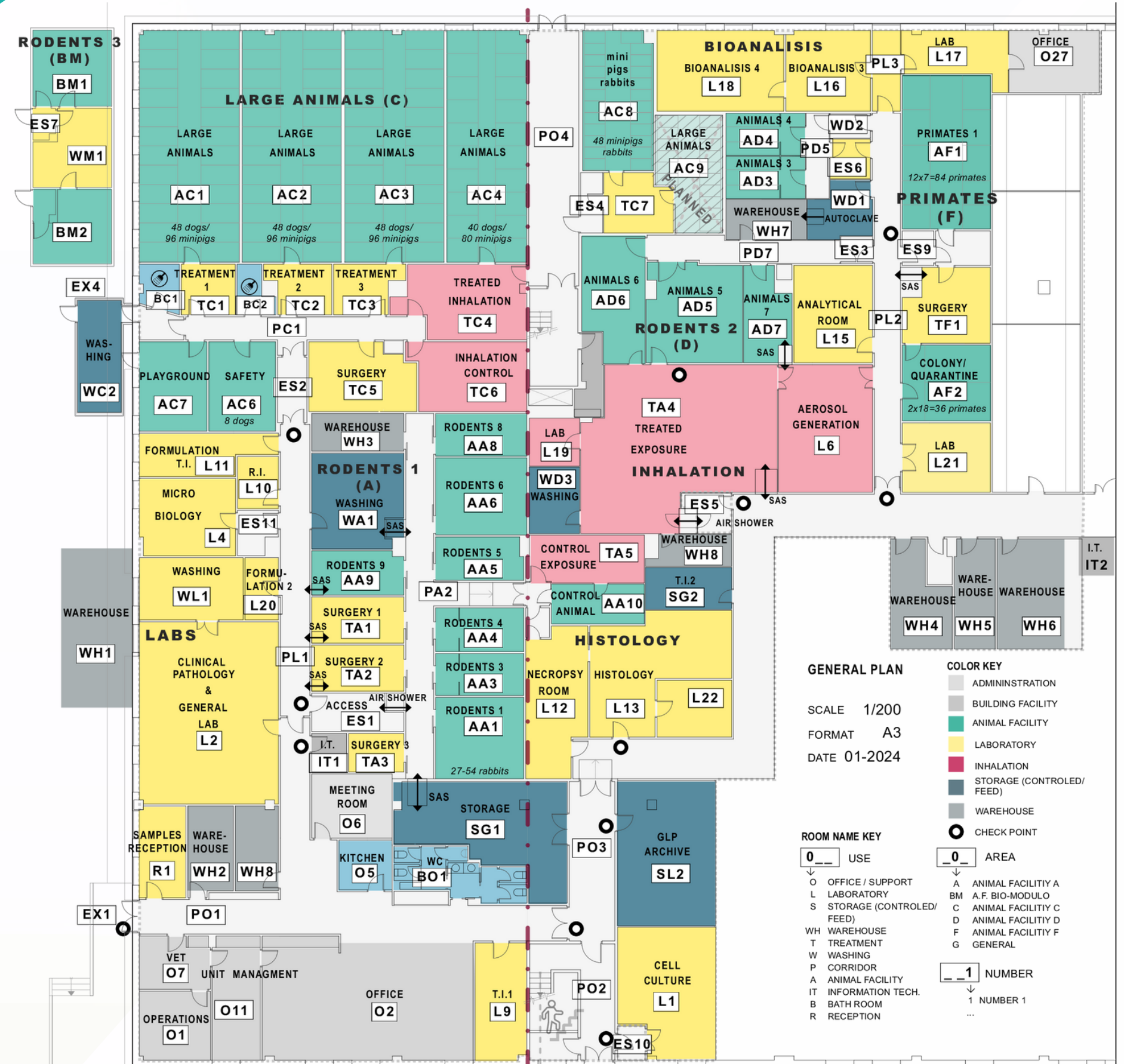
BIOANALYSIS UNIT

- SCIEX Triple Quad™ 6500+ LC-MS/MS System
- SCIEX Triple Quad™ 4500 LC-MS/MS System x2
- ExionLC AD UPLC system x3
- Agilent 1200 series HPLC system
- NanoLC 400 system
- Opentron OT-2 system. Pipetting robot automatizations
- Freezers -80, -20 and +4 degree



GROUND FLOOR PLAN

Floor plan of the second floor. The plan shows various rooms including offices, a kitchen, a printing area, a reception area, and meeting rooms. Rooms are labeled with numbers in boxes: O25, O21, O19, O17, O15, O26, O23, PO5, O22, O20, O18, O16, O24, and O14. A central corridor is labeled 'OFFICES'. A staircase is located on the right side of the plan.



RODENTS



- Total capacity in Rats and Mice: 2500

NON-RODENTS



- Total capacity in Rabbits: 48 animals



- Total capacity in Dogs: 184 animals



- Total capacity in Minipigs: 232 animals



- Total capacity in Non-Human Primates: 84 animals

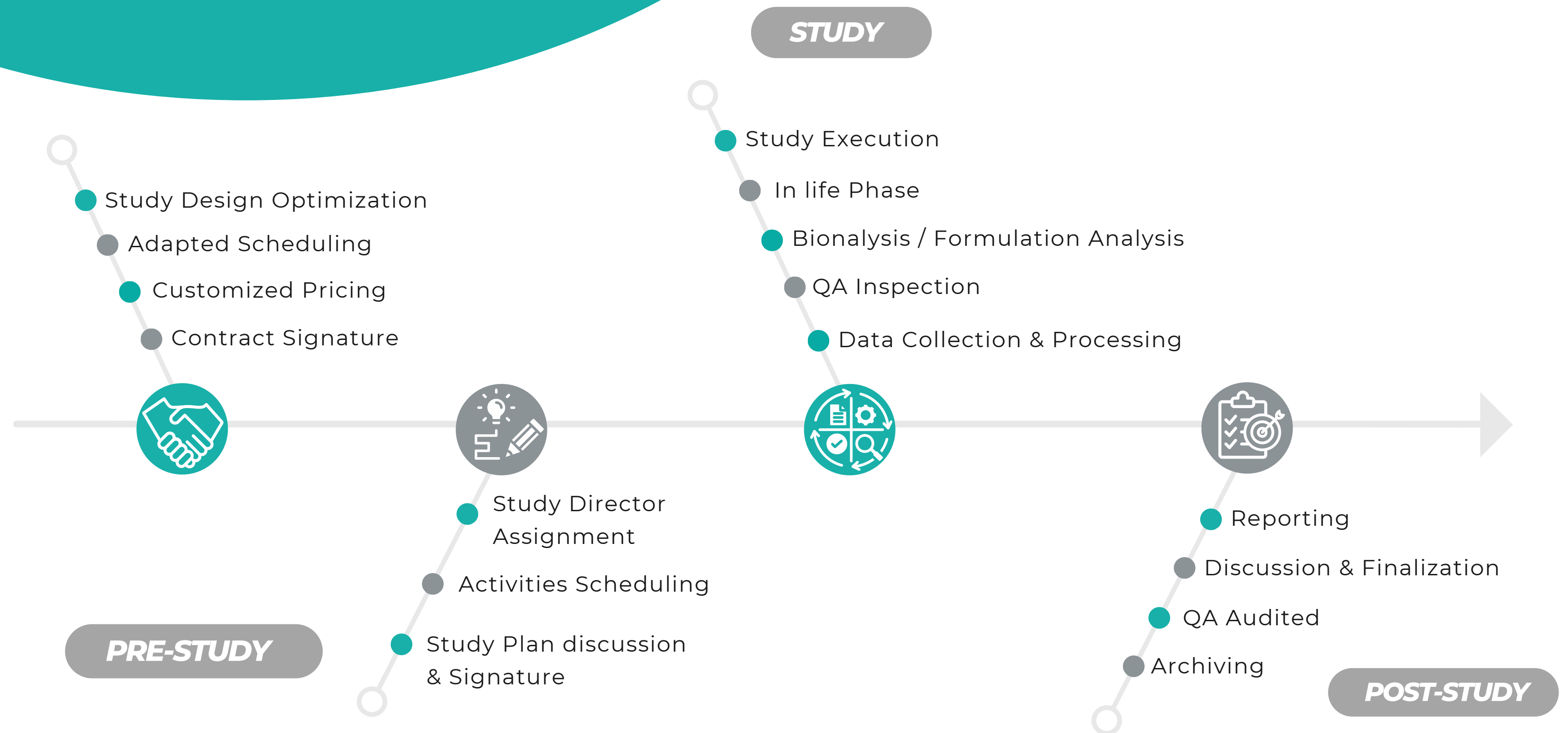
BEST POSSIBLE CONDITIONS

- Delivered by main research animals providers
- Housing according to FELASA standards
- Active enrichment program

ANIMAL CAPABILITIES

STUDY MANAGEMENT

A SUCCESSFUL PROCESS



WHY US?

- 20+ Years of Excellence
- Fast Slots
- 200+ Skilled Professionals
- 4000+ Studies Completed
- Commitment to Quality
- Regulatory Compliance
- Smooth communication with our SD



HEADQUARTERS



Madrid, Spain



+34 917 280 713



www.vivotecnia.com



bd@vivotecnia.com

THANK YOU