



Streamline your distribution  
network operations  
with modern web-based cloud  
**Network Information System**



Developers of Digital Futures

# What is NIS?

**The Network Information System (NIS)** will cover all your needs for planning, construction, and maintenance of distribution networks. The solution can manage electricity, earthing, streetlight, and district heating network assets. Web and cloud-based solution together with a role-based user interface enables you to use the system where needed and as needed by all internal and external users without user amount limitations.

With capable mobile offline tools, it is possible to create data in digital form immediately where found. Fully digitalized processes provide you with a comprehensive, up-to-date view of all ongoing projects and tasks, thereby enabling efficient operation and decision-making. This modern Network Information System is built together with industry-leading partners.









## Solution overview

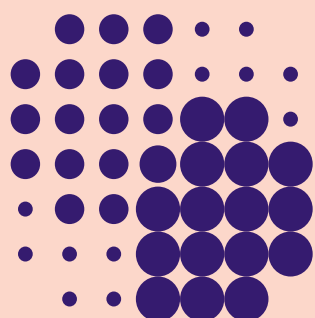
Partial optimization of distribution network management is not enough. A comprehensive view of the network and situational awareness form the basis of efficient management. Achieving this requires an always-up-to-date status of the network and real time information of all activities on the network for all stakeholders. Real-time awareness can be achieved when all data is created in digital form immediately when found regardless of time, place, and source.

TietoEvry NIS enables a comprehensive and up-to-date view of the status of the distribution network. With built-in asset documentation, grid planning, reporting, and geographical information, you will be able to design and implement future-proof distribution networks with your subcontractors more efficiently and more economically than ever before.

NIS includes network planning, documentation and maintenance, contracts handling, reporting and network analyses, and is suitable for electricity, earthing, streetlight, and district heating networks.

This new and modern web-based solution, delivered from cloud, is built together with strong partners, and includes components for all aspects of network management.

-  Asset register
-  Planning
-  Construction
-  Maintenance
-  Network analyses
-  Land use contracts
-  Strategic planning
-  ArcGIS Online integration



## Key features



### Planning & construction

An automated and digitalized process from strategic planning to construction enables efficient operation and management. NIS provides comprehensive tools for network analysis, planning and construction, including an extensive list of features, such as land use contracts, job descriptions and automated product lists.



### Network maintenance

To facilitate efficient network maintenance, you will have complete network lifecycle management including tools for analysis, planning and work orders. These features are supported by automated product lists for budgets, forecasts, and work orders.



### Web solution from cloud

High availability with real-time information is the key factor for organizational efficiency at all levels. NIS is a browser-based information system available for all stakeholders where and when needed, and on any device.



### Strong partnerships

To create a sustainable and future-proof solution, NIS is built together with industry-leading technology partners. The solution is built on Esri ArcGIS technology and utilizes a wide selection of ready-made Esri ArcGIS applications. The partnership model ensures cost-efficient, agile, and fast continuous development using innovative, proven solutions from partners.



### Field applications

Field applications work on the web and in mobile mode, also allowing offline use. This makes sharing easy, with unlimited use for you and your partners.

- Near-real-time data sharing between office and field workers
- Data created in digital form immediately where found



### Regulatory reporting

NIS has comprehensive functionalities for authority reporting. The system generates up-to-date network value reports automatically every day including the value of new constructed network and residual value or disassembled network for a defined reporting period.



### Integrations

NIS integrates to widely used Distribution Management Systems, such as Hitachi DMS600 and Trimble DMS. Similarly, it includes ready-made integrations to Customer Information Systems (CIS).



### Business benefits

TietoEvry NIS provides everything you need for cost-efficient network lifecycle management.



### Operational efficiency

A web solution from cloud with role-based user interface and capable offline field tools, NIS enables high availability and usability. Digitalized processes with process automation increase efficiency.



### Increased customer satisfaction

Customer satisfaction is key for customer-centric businesses. Flexible and comprehensive interfaces to receive and share up-to-date information raise situational awareness and make for better experiences.



### Optimized for outsourced operations

TietoEvry NIS with its SaaS delivery model provides a simple solution for a utility with outsourced operations where the user amount is not limited. In addition, the modern web-based solution does not require any additional installation for possibly hundreds of users in the field.



### Cost efficiency

Flexible deployment, operation and pricing models combined with automation will result in a low Total Cost of Ownership.

## How to get on board

Get in touch with us to ensure your distribution company will benefit from the latest innovation in network information that enables efficient lifecycle management of your network.

We will be happy to arrange a meeting to give you more detailed information. You can also read more at from our website

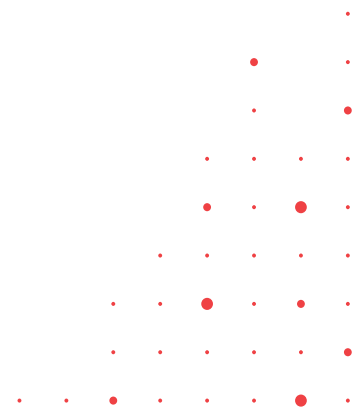
[www.tietoenvry.com/en/industry/energy/](http://www.tietoenvry.com/en/industry/energy/)

## About Tietoevry

Tietoevry creates purposeful technology that reinvents the world for good. We are a leading technology company with a strong Nordic heritage and global capabilities. Based on our core values of openness, trust and diversity, we work with our customers to develop digital futures where businesses, societies, and humanity thrive.

Our 24,000 experts globally specialize in cloud, data, and software, serving thousands of enterprise and public sector customers in more than 90 countries. Tietoevry's annual turnover is approximately EUR 3 billion and the company's shares are listed on the NASDAQ exchange in Helsinki and Stockholm, as well as on Oslo Børs.

[www.tietoevry.com](http://www.tietoevry.com)



### For further information, please contact

Evelina Thiger  
Head of Sales, Energy & Utilities  
Tietoevry Industry  
E-mail: [evelina.thiger@tietoevry.com](mailto:evelina.thiger@tietoevry.com)

