

illumine

Scientific illustrations
by a scientist

S
C
I
M
E
D
I
C
A
L

Contents

04 Who

06 Why

08 What

09 Graphical Abstract & Model

12 Figures & Data Visualization

13 Cover

14 Slide deck

14 Poster

15 Logo

22 How

W
H
O

Hello!



I'm Adeline Deward,

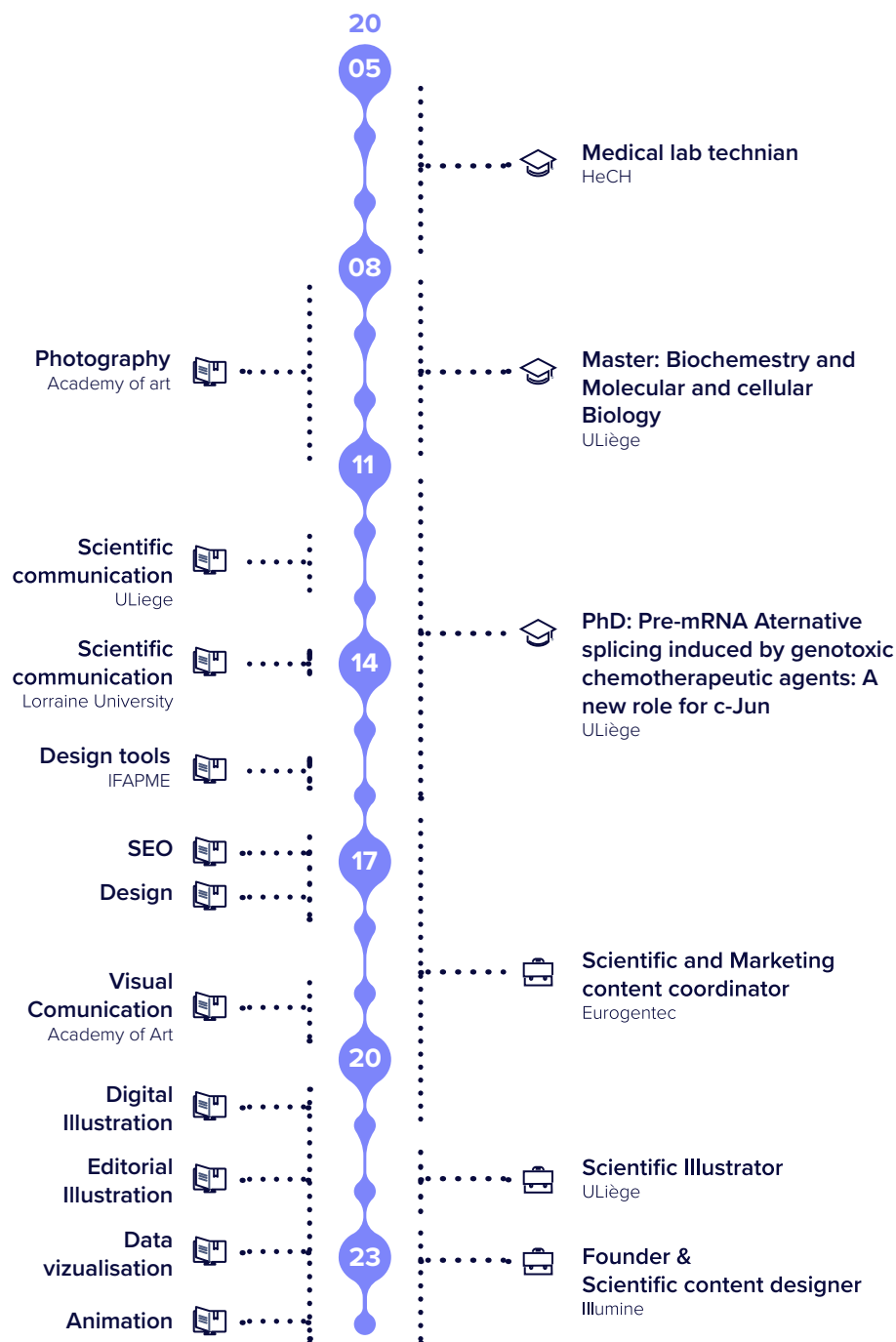
I'm a Belgian scientific content designer on a mission fueled by passion and expertise.

Picture this: a seamless fusion of science and visual artistry, meticulously crafted to illuminate the depths of scientific knowledge. That's precisely the magic I bring to the table.

My journey? It's a riveting adventure through the realms of academia and creativity. Armed with a master's degree in Biochemistry and Cellular and Molecular Biology, I delved deep into the intricacies of cancer research during my **Ph.D.** But my story doesn't end there.

Simultaneously, I embarked on a parallel path, honing my skills in **communication and visual design**. For five dynamic years, I thrived in the fast-paced world of **Marketing**, navigating the complexities of a major biotechnology company. And from this rich tapestry of experience, **Illumine** emerged.

From science to design



My unique journey fuels
the brilliance of illumine

WHY



Stay Focused

On your research while I take care of your visual communication



Be Understood

Thanks to clear visuals, easy to understand at a glance.



Be Remarkable

Leave a lasting impression and foster more interactions.



Your brilliant
ideas deserve to be
highlighted & spread.

Illumine isn't just a service, it's a testament
to my unwavering commitment to excellence
and innovation.

Here, I unleash my **creativity, passions, and tireless pursuit of perfection** to serve the research and science community.

Leveraging my robust scientific background, I **decode complex concepts** and transform them into captivating visuals.

But my mission doesn't stop there. I aim to **revolutionize science communication** by infusing it with cutting-edge design and communication techniques.

Each project I undertake is a reflection of my dedication to authenticity and distinction. I craft visual solutions that not only encapsulate the essence of a project but also propel it into the spotlight, ensuring **maximum impact and visibility**.

So, if you're ready to elevate your scientific content to new heights, join me on this exhilarating journey with illumine.

Together, let's illuminate the world of science like never before.

Design serving science



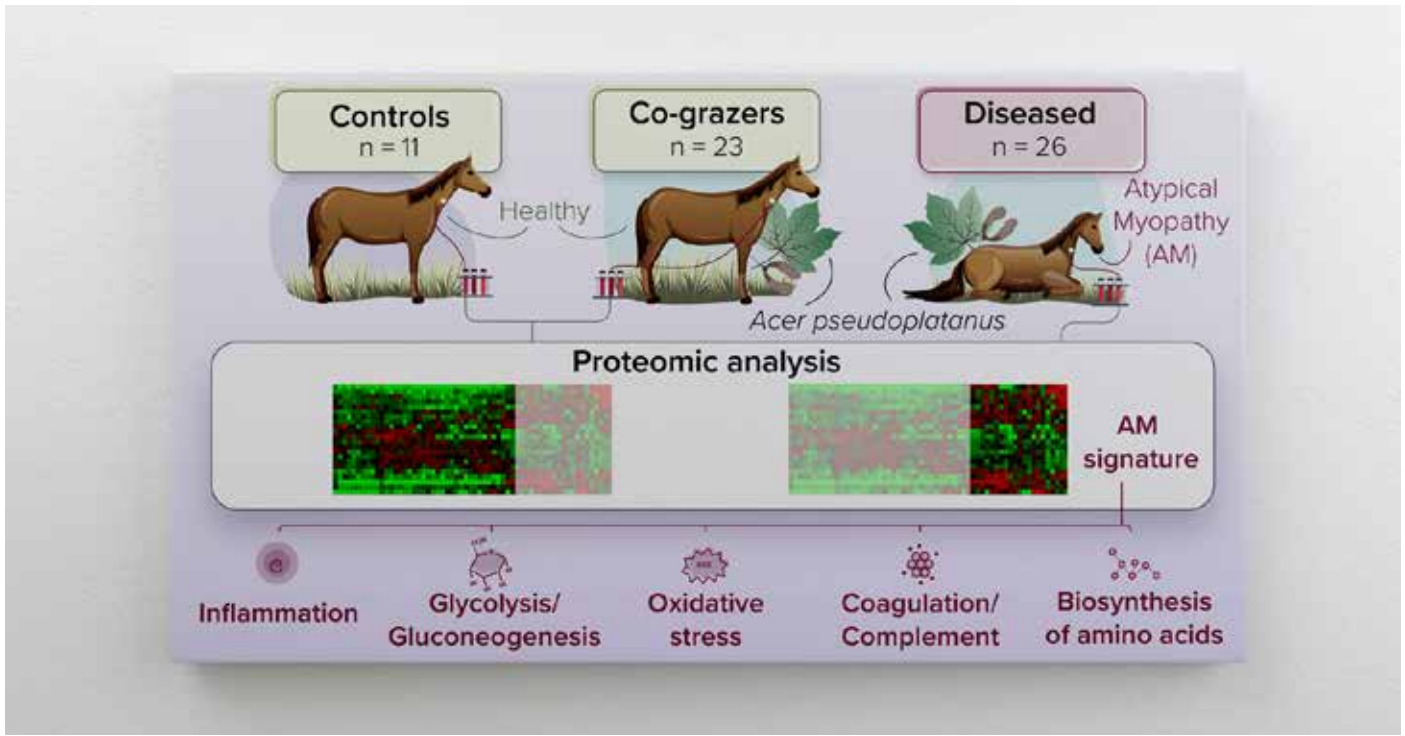
Across all mediums, illumine stands ready to illuminate the world of science through captivating visuals.

Whether you're in need of a compelling **graphical abstract** to visually summarize your research, a dynamic **model** to illustrate complex processes, a striking **poster** to grab attention at conferences, an eye-catching **cover**, a conceptual **illustration** to convey abstract concepts, informative **figures** for your publication, engaging **data visualizations** to present complex data sets, powerful **slide** decks for presentations, or a distinctive **logo** to represent your lab, I will combine my scientific and creative skills to transform your research into visually stunning representations. Each visual element will be meticulously crafted to ensure **clarity, accuracy, and impact**, effectively communicating your message.

Furthermore, if you're looking to add an extra layer of dynamism and interactivity to your visuals, we can explore animation techniques to bring them to life. From subtle movements to full-blown animations, we can work together to create visuals that captivate and engage your audience on a whole new level.

Let's collaborate to translate your research findings into visually compelling representations that inform, inspire, and captivate, leaving a lasting impact.

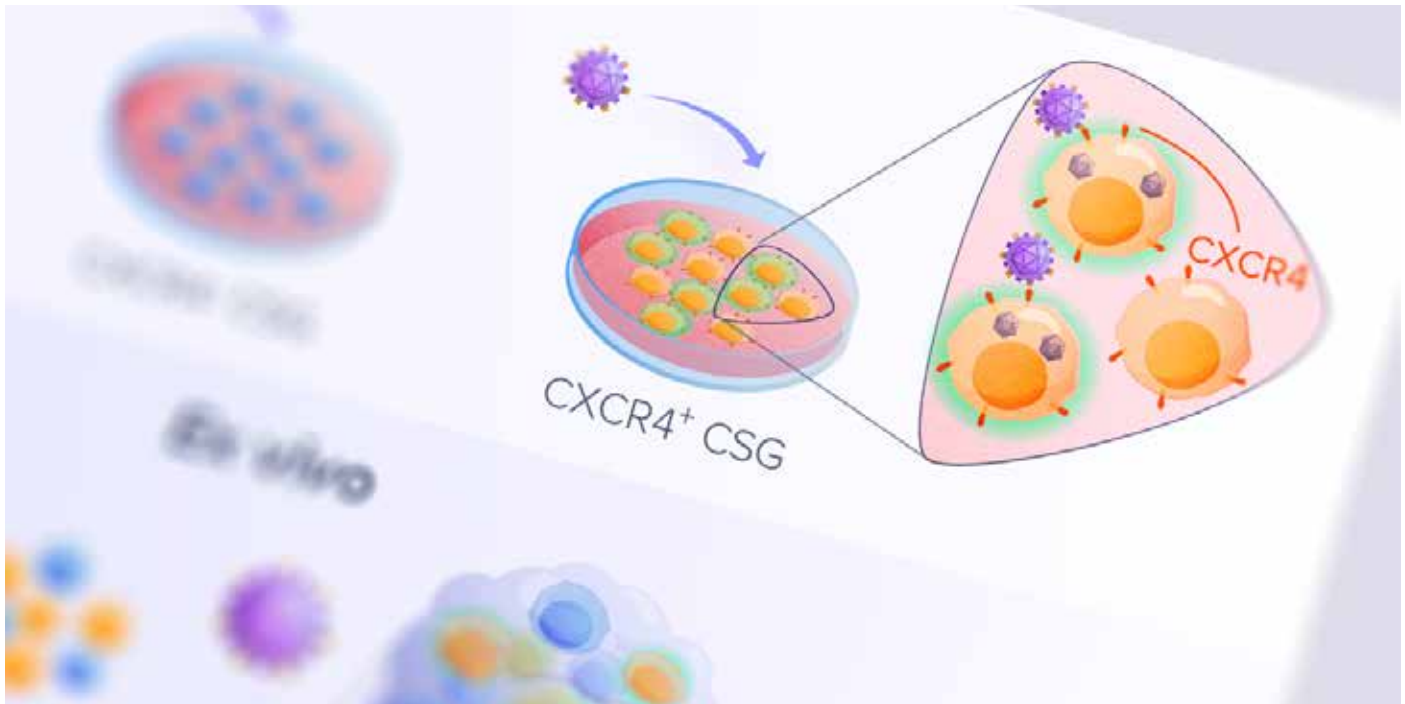
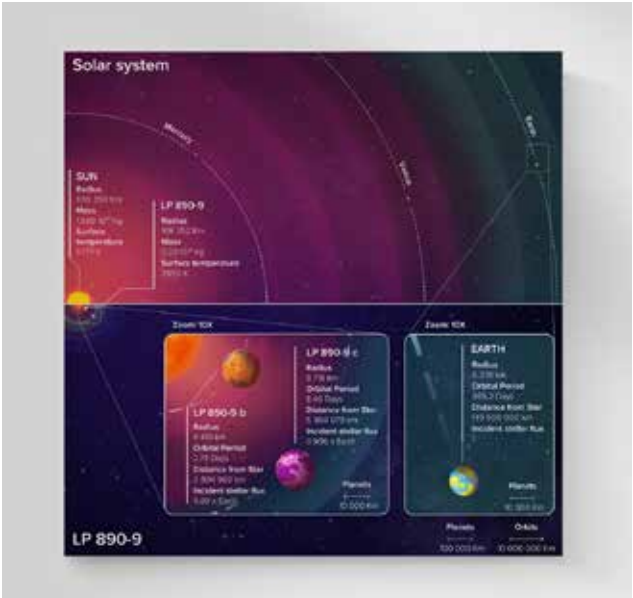
W
H
A
T

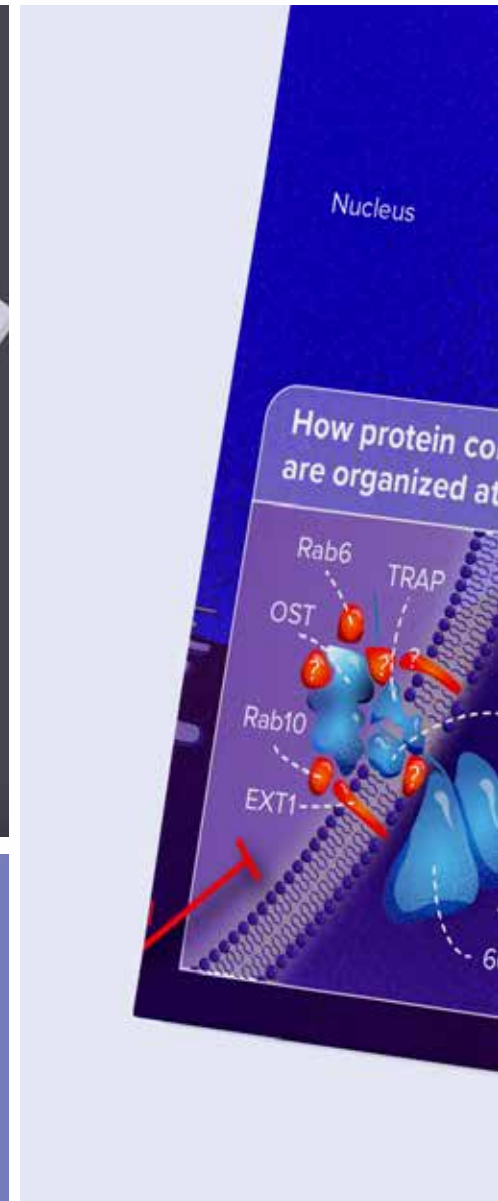
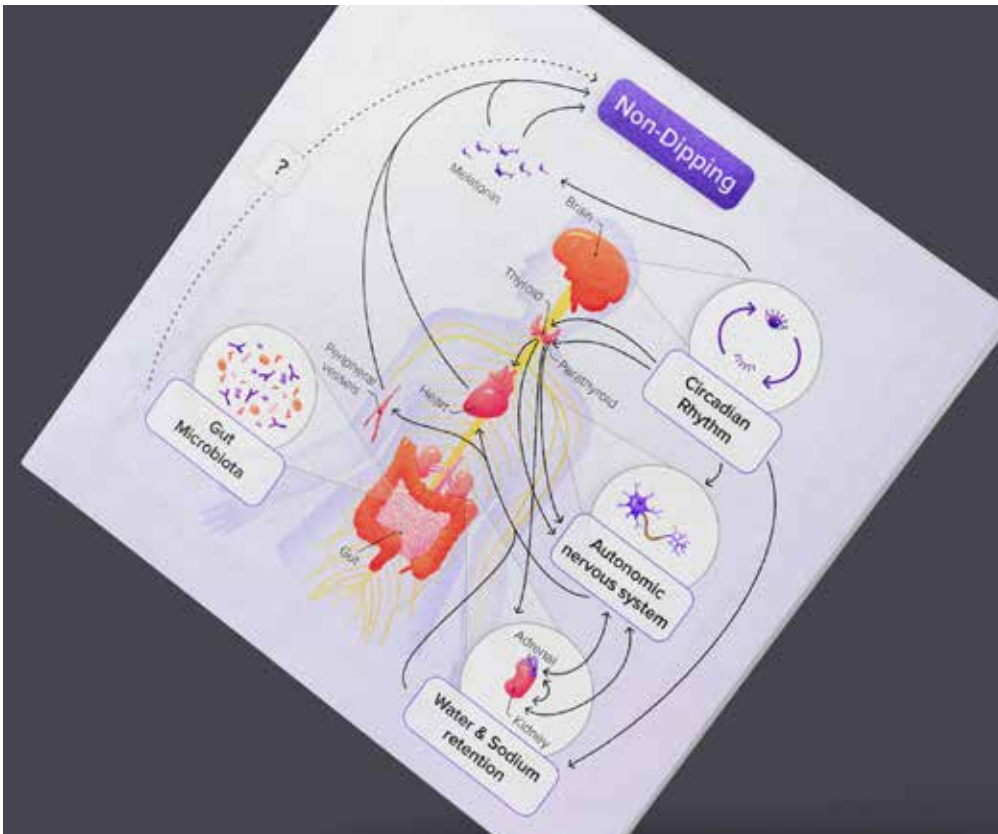


Graphical abstract & Model

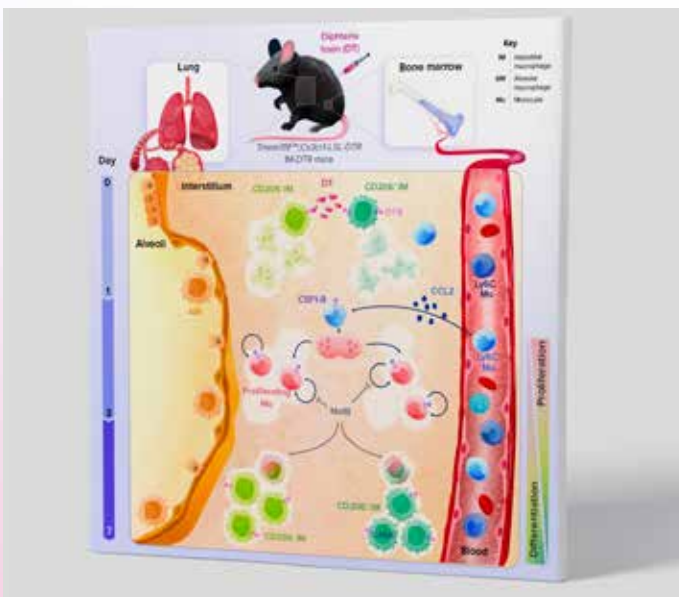
Based on an explanation of your project or paper, I analyze the data to provide you with the most appropriate visual storytelling.

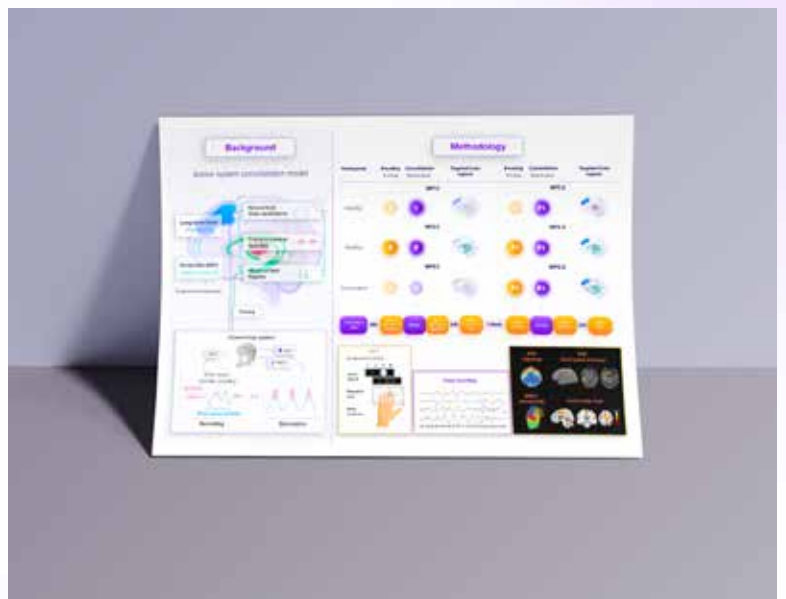
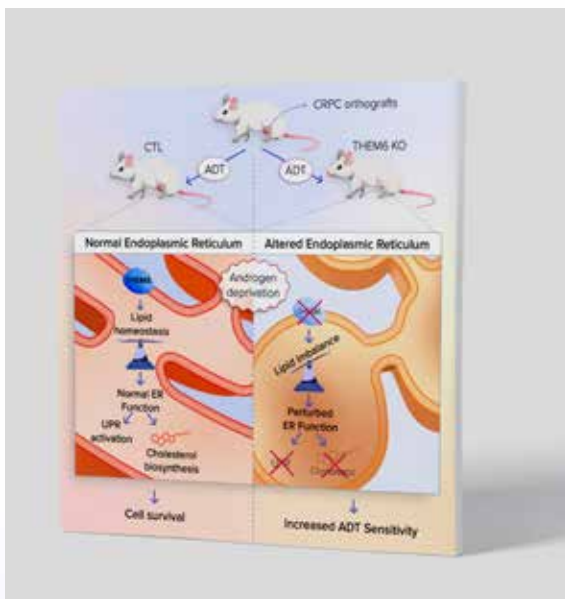
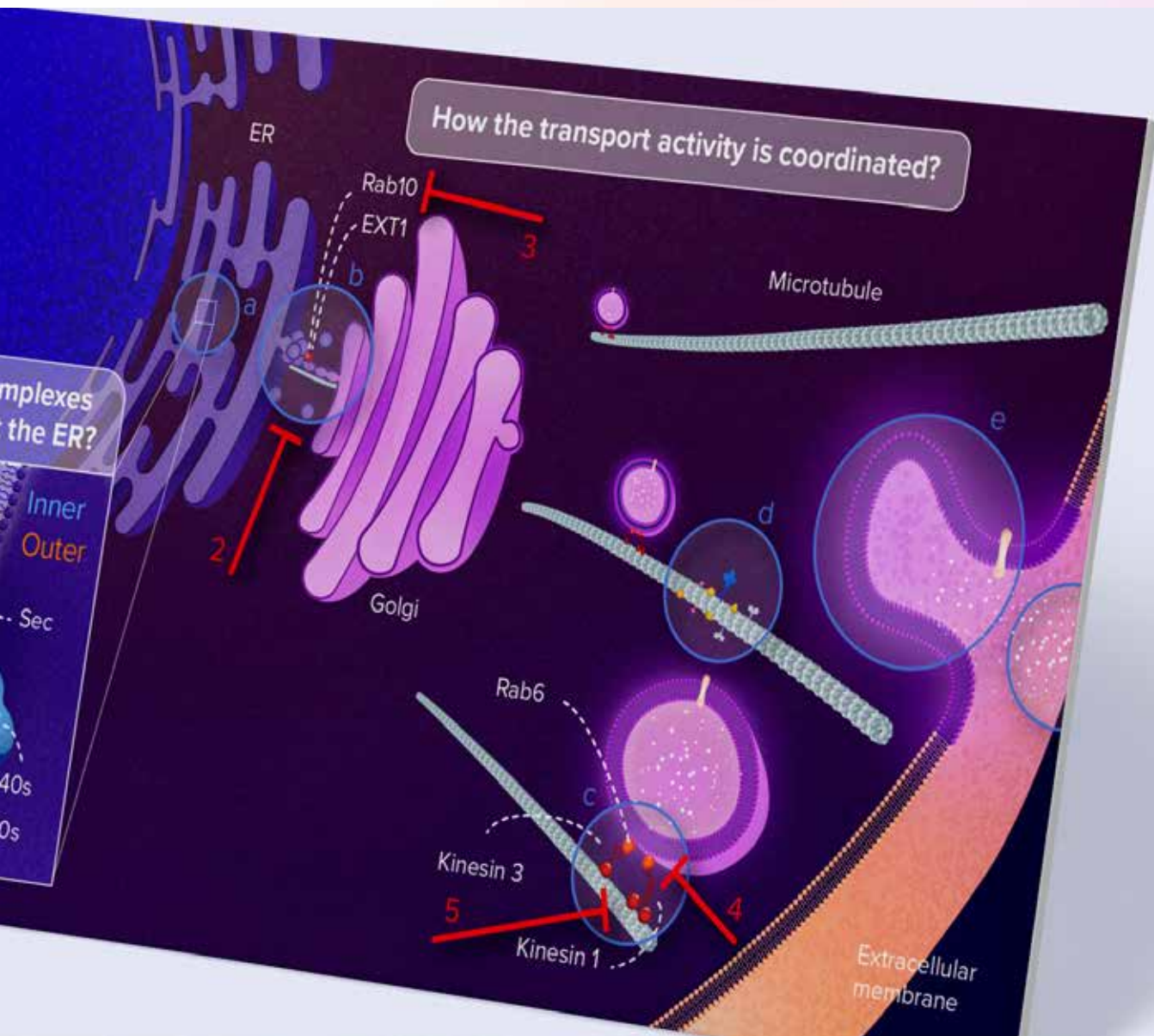
I incorporate a modern aesthetic to help your paper stand out and capture the attention of your audience.

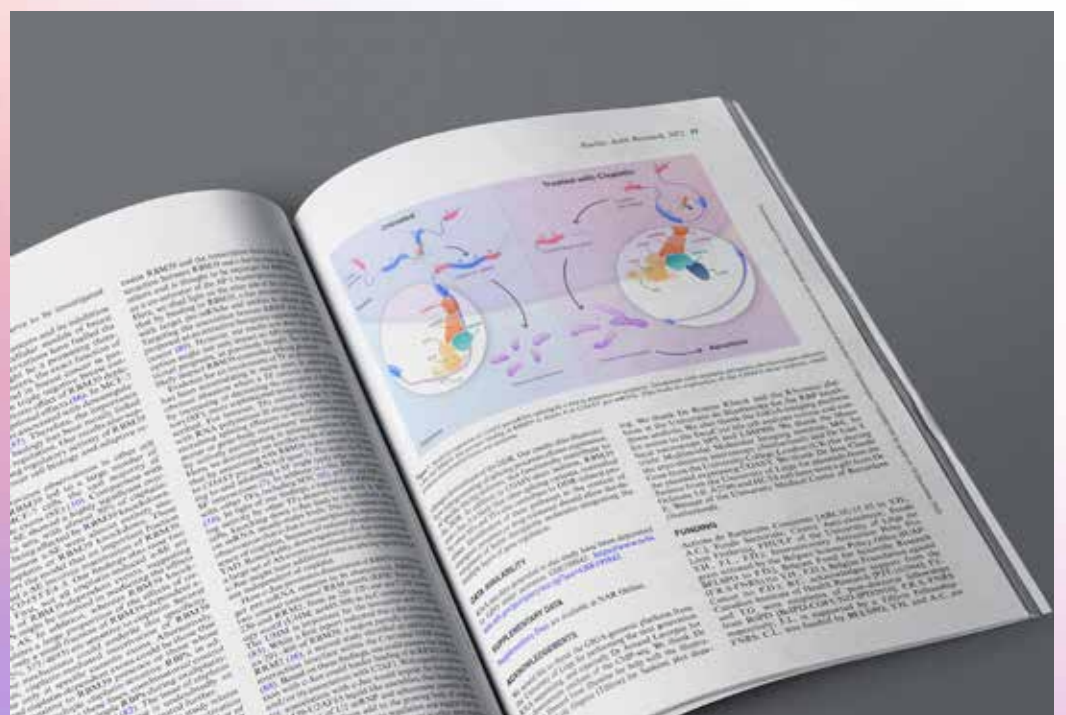
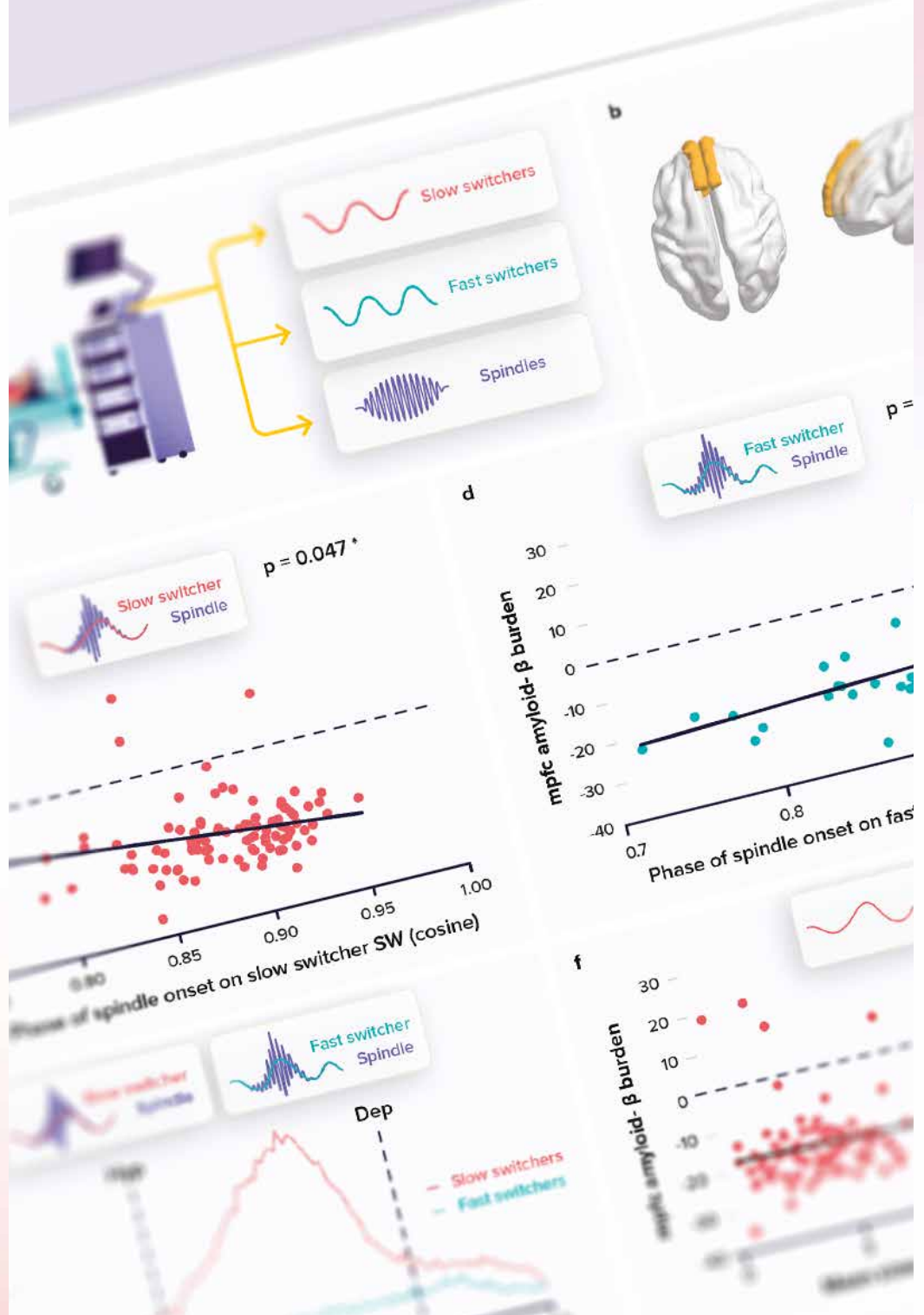
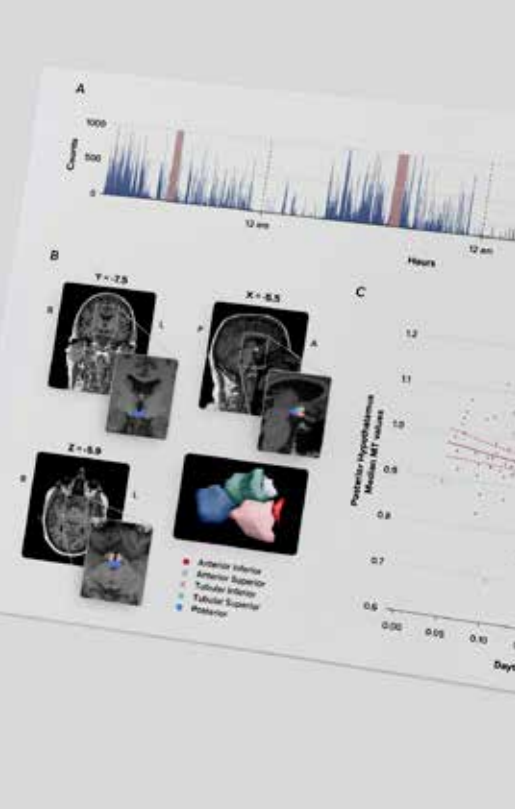


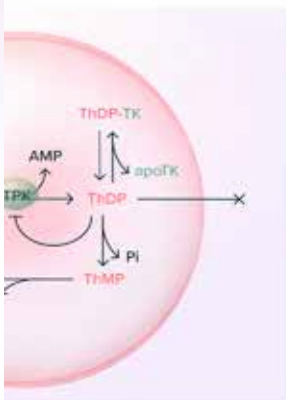


“An image is worth than thousand word









PK in a red blood cell. Thiamine is transported into y involving ThTR1 [62]. Inside the cells, thiamine is ds as a feedback inhibitor of TPK when intracellular cannot exist across the plasma membrane by simple excess coenzyme is hydrolyzed to ThMP and thiamine. r charge of thiamine is neutralized by a chloride anion.

wrior would be the protection of the brain from could be phosphorylated to ThDP without limit towards ThDP synthesis [32], this could lead to f cells and hepatocytes (the latter having a high tion 6.3) and depletion of the plasma thiamine in [32].

Derivatives with High Bioavailability

tranes is a relatively slow process [27]; therefore, high bioavailability were developed, mainly with low levels after deficiency. These derivatives have low, or they generate hydrophobic metabolites that cross the intestinal permeability barrier [26].

chemically distinct types of prodrugs (Figure 7): a prominent representative is SuBT and its product

thiazole ring, but the distinction between the two an requires different reactions to form thiamine: le bond, while thioesters require hydrolysis.



Figure 2. Thiamine metabolism in a neuron. Thiamine is transported into the cells and then pyrophosphorylated by thiamine pyrophosphokinase (TPK). This free thio- γ of high turnover can either bind to transketolase or be transported into mitochondria, where it binds to 2-oxoacid dehydrogenase apoenzymes (see Figure 1). The sum of bound ThDP⁺ represents the low turnover pool [9]. Excess cytosolic ThDP is hydrolyzed to THMP by thiamine pyrophosphatases (ThDPase), and THMP is hydrolyzed to thiamine by thiamine monophosphatases (ThMPase). A small fraction of mitochondrial ThDP⁺ can be phosphorylated to ThTP by FoF1-ATP synthase. ThTP can exit mitochondria and be hydrolyzed to ThDP by a very specific cytosolic 25-kDa thiamine triphosphatase (ThTPA) [10,11]. Cytosolic ThDP can also be converted to AThTP by a ThDP adenylyl transferase [20].

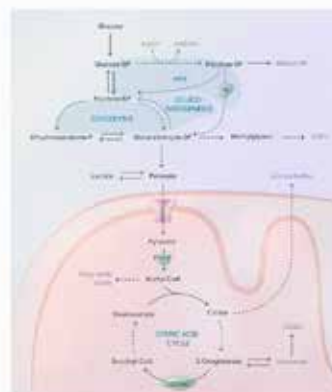


Figure 3. Role of ThDP-dependent enzymes in cell metabolism. TK, transketolase; PDHC, pyruvate dehydrogenase complex; OGDHC, 2-oxoglutarate dehydrogenase complex. The mitochondrial



Figure 9. Hypothesis 4: data published in the 1990s



Figure 10. Summary of intermediate, possibly

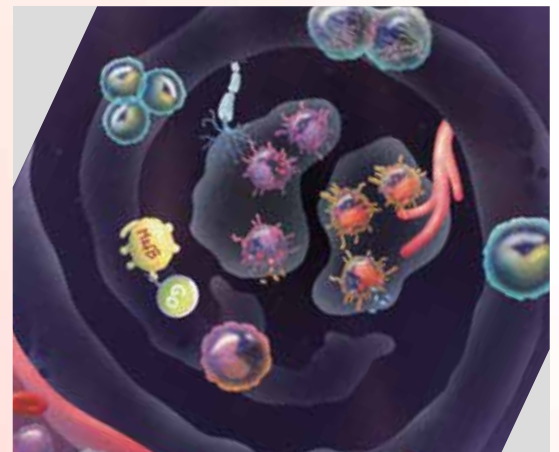
Figures & Data vizualization

Managing figures can be time-consuming. Using your raw data, I assist you in **finding the optimal way to represent and organize it**, ensuring your results are easily understandable and memorable. Additionally, I help accelerate the publication process by adapting the figures to meet journal requirements.



Cover

Conceptualizing a project through illustration will help you **disseminate** it to a larger audience and shed light on your discoveries.





Slide deck

Capture and retain your audience’s **attention** while fostering increased engagement through clear and visually appealing presentations.



Logo

Utilizing my scientific expertise, I design logos that are not only **meaningful** but also uniquely representative of your brand.



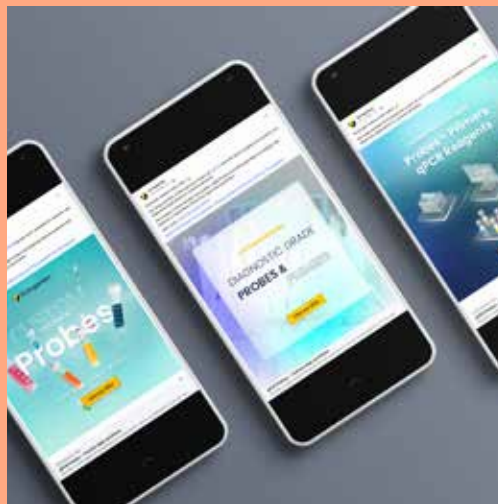
Poster

Let me craft visually stunning posters that attract viewers and convey your message with **clarity** and **creativity**.



Illumine is also for companies ...

COMMERCIAL VISUALS



BROCHURES

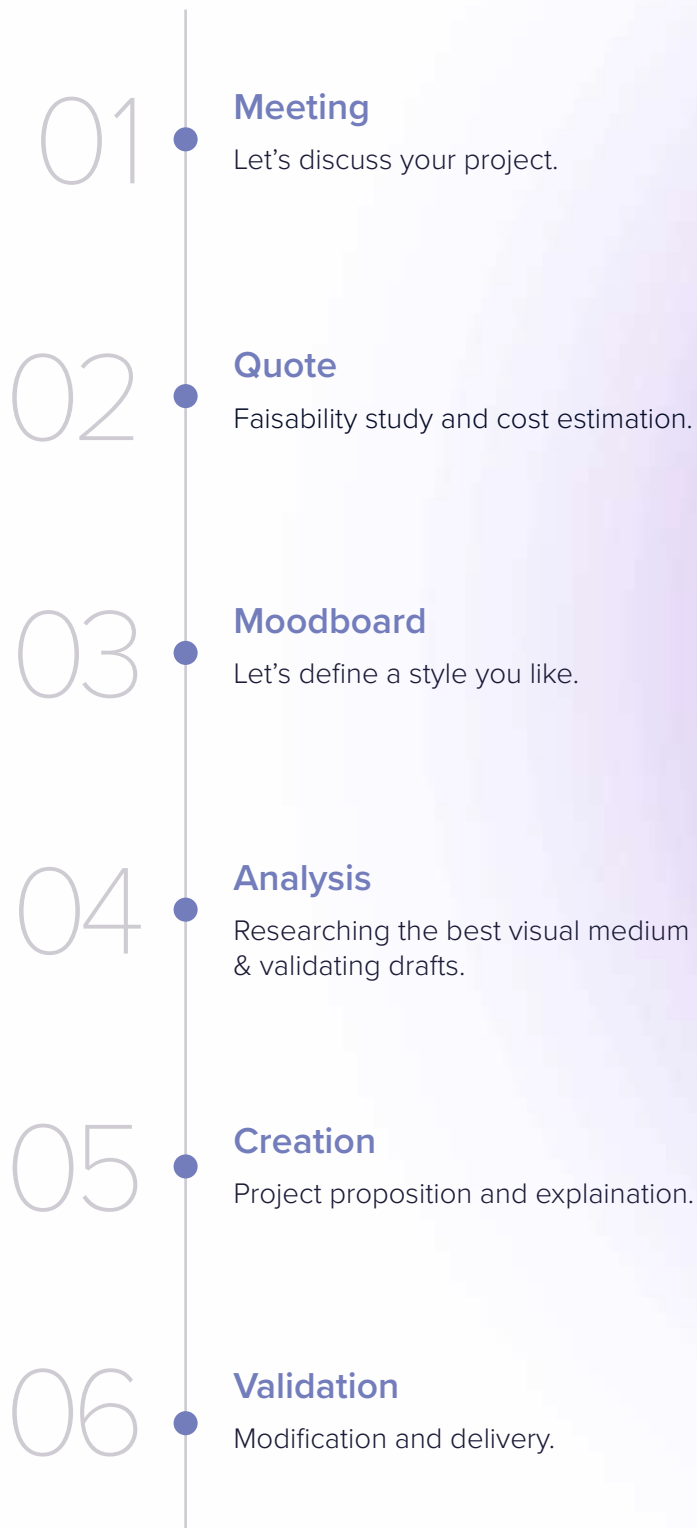


INFOGRAPHICS



... view more on www.illuminesciences.be

Process



HOW

The background of the image is a solid blue color. On the right side, there are several concentric circles in a lighter shade of blue, creating a ripple effect that extends from the top right towards the center.

TURN
THE
SPOTLIGHT
ON
YOUR
PROJECT

Inspired to collaborate?

WWW.ILLUMINESCIENCES.BE

