

KESLA DEFENCE

Mr. Tapio Pirinen

Director, Kesla Defence

tapio.pirinen@kesla.com



Kesla Oyj in brief



1960 in Rantasalmi, Finland



M EUR 44,3 (2024)



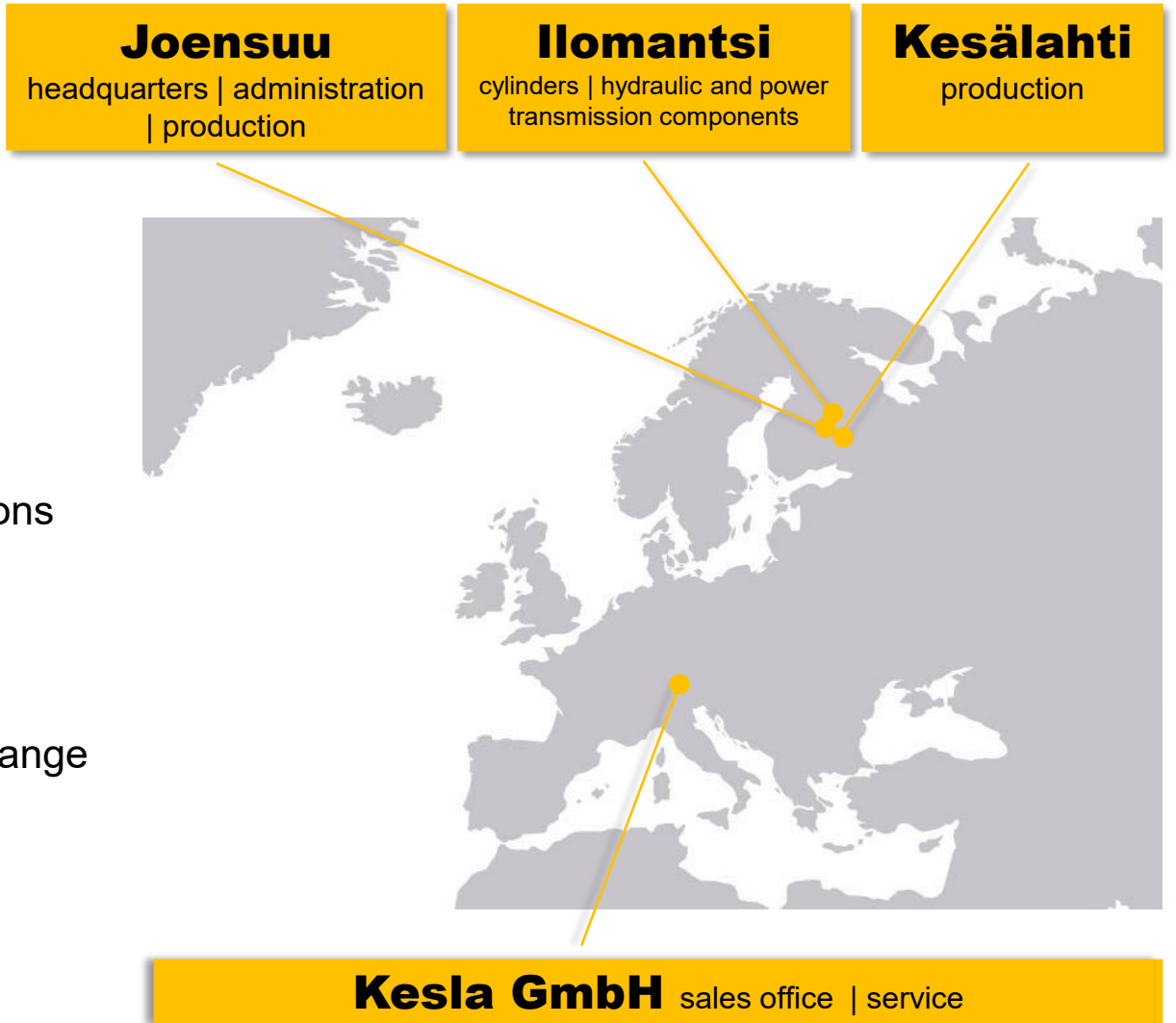
53% of the turnover (2024) to export operations



232 (2024)



Publicly listed at Nasdaq Helsinki stock exchange



Kesla Oyj product groups

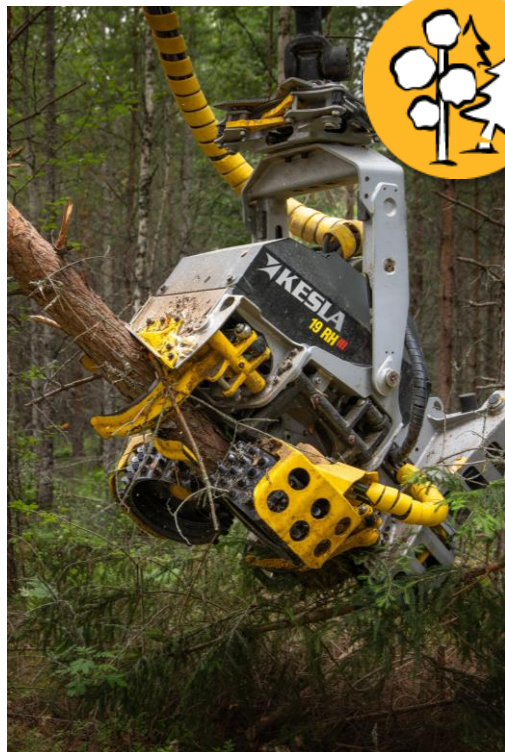
Tractor equipment

Forestry loaders and timber trailers



Logging equipment

Roller and stroke feed harvester heads as well as cranes for forest machines.



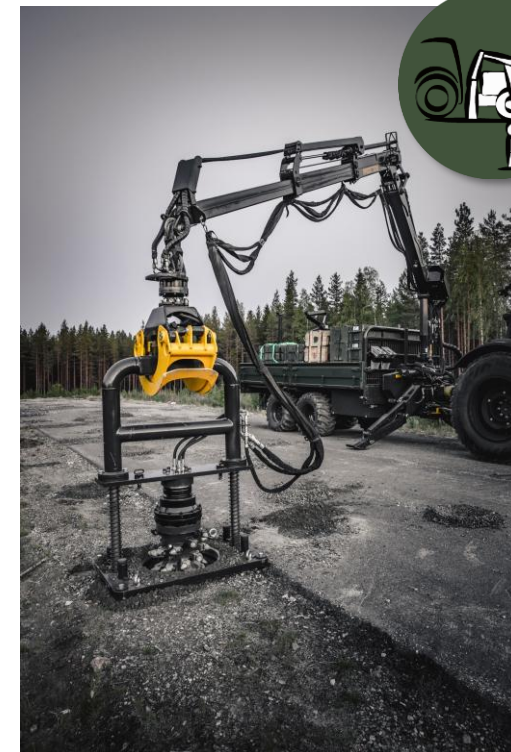
Truck and stationary cranes

Cranes for timber trucks, bioenergy processing, industry or recycling.



KESLA Defence

Munition cartridges until 1996
Re-born in 2018



BORN TO DEFEND AND PROTECT

KESLA Defence was established to meet a critical need for defence and protection. Collaboration between Kesla and the Finnish Defence Forces led to the development of the first KESLA Kerberos multipurpose trailer, featuring an innovative Anti-Tank Mine-Laying System.

Building on six decades of expertise in operating in challenging forest environments, KESLA Defence specializes in developing and manufacturing Military Engineering solutions designed to contribute to a safer world.





KESLA KERBEROS

Designed for military engineering operations in both rural and urban areas.

KESLA Kerberos transforms tractors into versatile units with countermobility, mobility and logistics capabilities. The unit can be connected to any military or civilian tractor.

The mine emplacement drill efficiently creates holes over large areas, even in hard frozen asphalt, without moving the unit.

KESLA Kerberos can be utilized also for obstacle construction, general logistics, road maintenance and salvage operations.

[KESLA Kerberos video >>>](#)



COUNTERMOBILITY

Machined Anti-Tank Mine-Laying System Drills 47 cm deep ø45 cm hole in 10-20 seconds

Our Anti-Tank Mine-Laying System integrates mine logistics and drilling capabilities to create an efficient countermobility operation. Whether the mission requires forest navigation or high speed on-road travel, the Anti-Tank Mine Drill can be attached to a KESLA Kerberos multipurpose trailer or to any truck mounted crane.



MOBILITY

Kerberos supports any minor mobility tasks on all terrains
Minimum manpower for operations
Compatible with any common tractor

KESLA Kerberos enhances mobility and support for friendly forces through its transport, tipping and lifting capabilities. For material handling, the unit can be equipped with a grapple, clamshells, grippers or even a guillotine grapple for felling down small trees.



LOGISTICS

Platform area 12,5 m² or 7,5 m³

Dividable platform to separate cargo

Suitable for any universal cargo, round wood and bulk materials

KESLA Kerberos offers comprehensive logistics capabilities both on-road and off-road. The tractor pulled unit can travel at maximum speed of 40km/h (short distance max. 57 km/h) on roads while in forests, travel is hydraulically assisted. The entire unit has a turning radius of only 10 m.



SALVAGE & SERVICE OPS

Cost efficient On-Road and Off-Road capability

Kerberos can be utilized for general transport and lifting connected with salvage and service works in such a terrain and off-road conditions where many other machinery cannot go.



KESLA HydraX

KESLA HydraX combines mobile military vehicle washing, fire extinguishing and fire security capabilities for military exercises.

The HydraX unit uses natural water sources from lakes and rivers and has an additional tank system to use any common admixtures.

The same HydraX concept works effectively as fire extinguishing and fire security solution during live firing exercises, preventing forest fires from spreading to unwanted areas.

Additionally, system can be used for crowd control through water sprays when protecting area borders or for CBRN operations.



[HydraX Fire Operations video >>>](#)

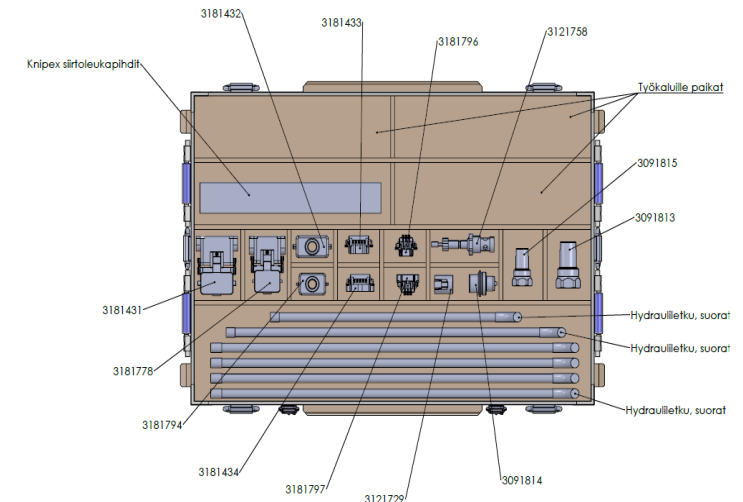
SERVICES

KESLA Defence provides globally:

- comprehensive training programs
- MIL packed spare parts systems
- service contracts

We believe that close collaboration turns best ideas into innovations and further to operational military performance on the field.

KESLA Defence actively participates in military engineering R&D projects within Defence Industry and with end users.



PARTNER

Defence technology

Armament, sensors, radars...
 Communication masts...
 Mobile power...
 Etc.

KESLA DEFENCE

Mobility | Logistics | Lifting

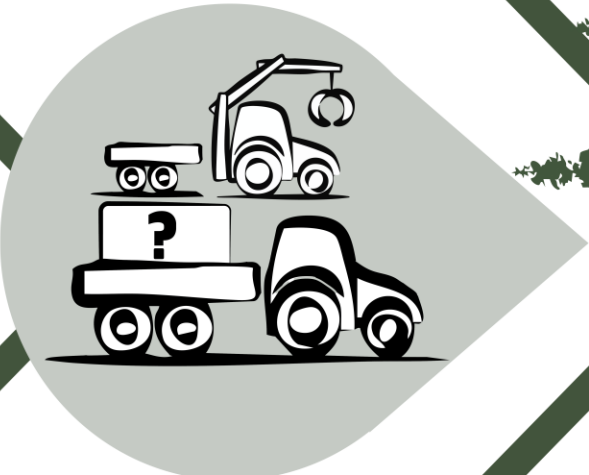
Modular trailer platform solution
 With or without crane
 Work attachments

VEHICLE

Mobility

Civilian or military tractor
 Other heavy military vehicle

Factory intergration

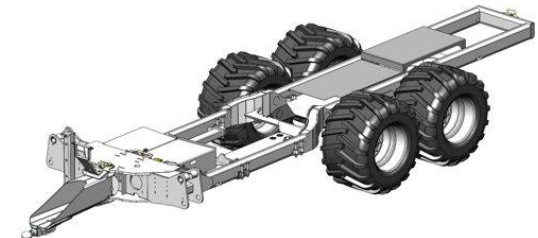
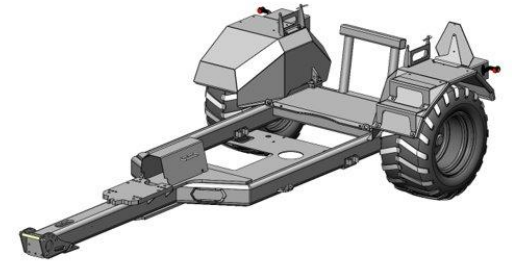
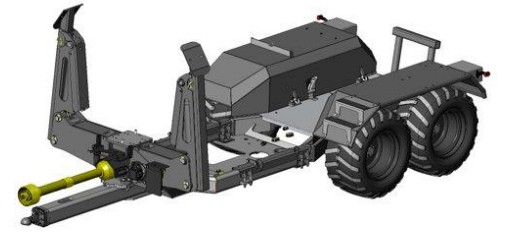
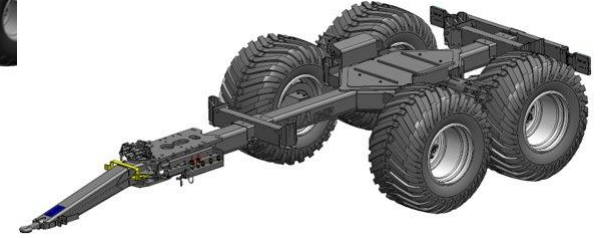


ON-ROAD
 OFF-ROAD

ON-ROAD
 OFF-ROAD

BRING YOUR TECHNOLOGY BEYOND ROADS WITH US

PLATFORM SOLUTIONS



KESLA
DEFENCE



Kiitos!
Thank you!