



Your Design. Our Precision.

JAKAP SNAPSHOT

We at Jakap are committed to making the sourcing of Industrial components easy. We aim to create value for our customers through continuous improvement and innovation.

Quality, Safety and Sustainability Management

ISO 9001 : 2015

IATF-16949:2016

ISO 45001:2018

30 years of experience. Specializing in manufacturing industrial components.



Raw Material Machined

Copper



Brass



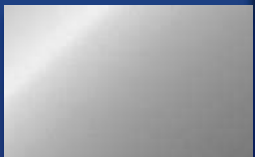
Bronze



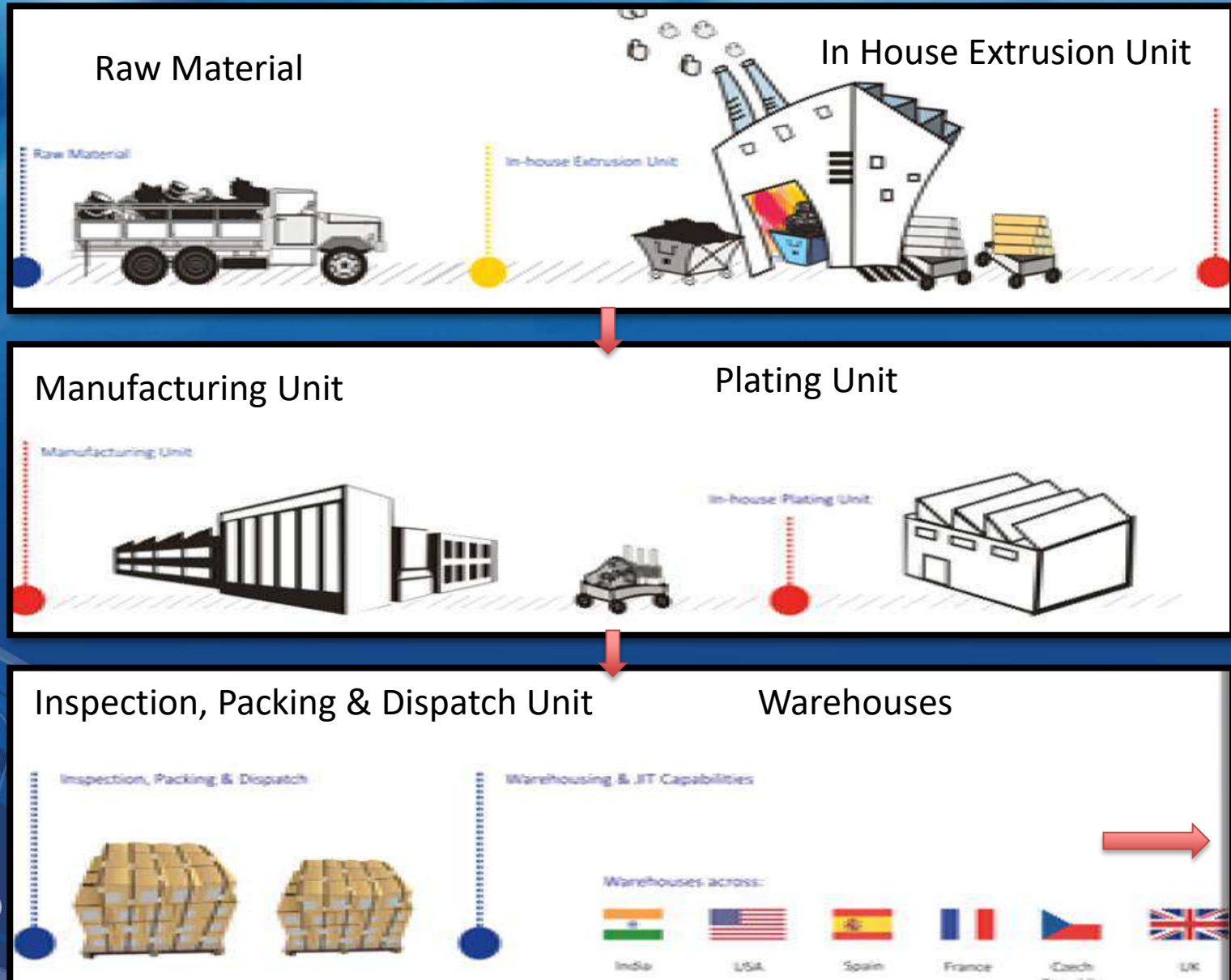
Steel
Stainless Steel
Carbon Steel



Aluminum

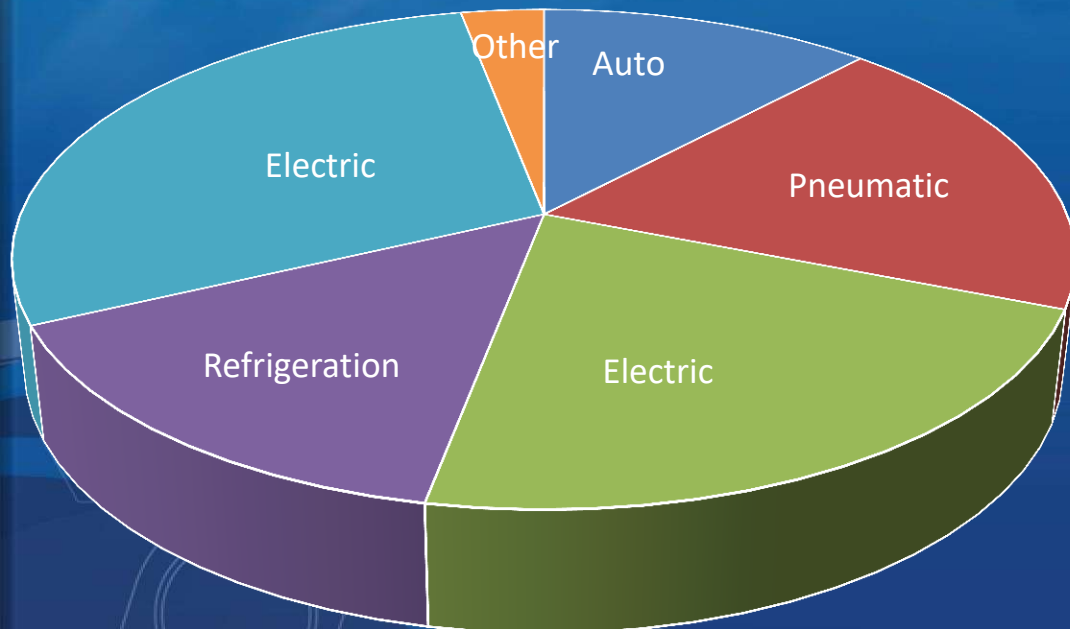


END TO END SERVICE PROVIDER



30 years of Machining

INDUSTRIES SERVED

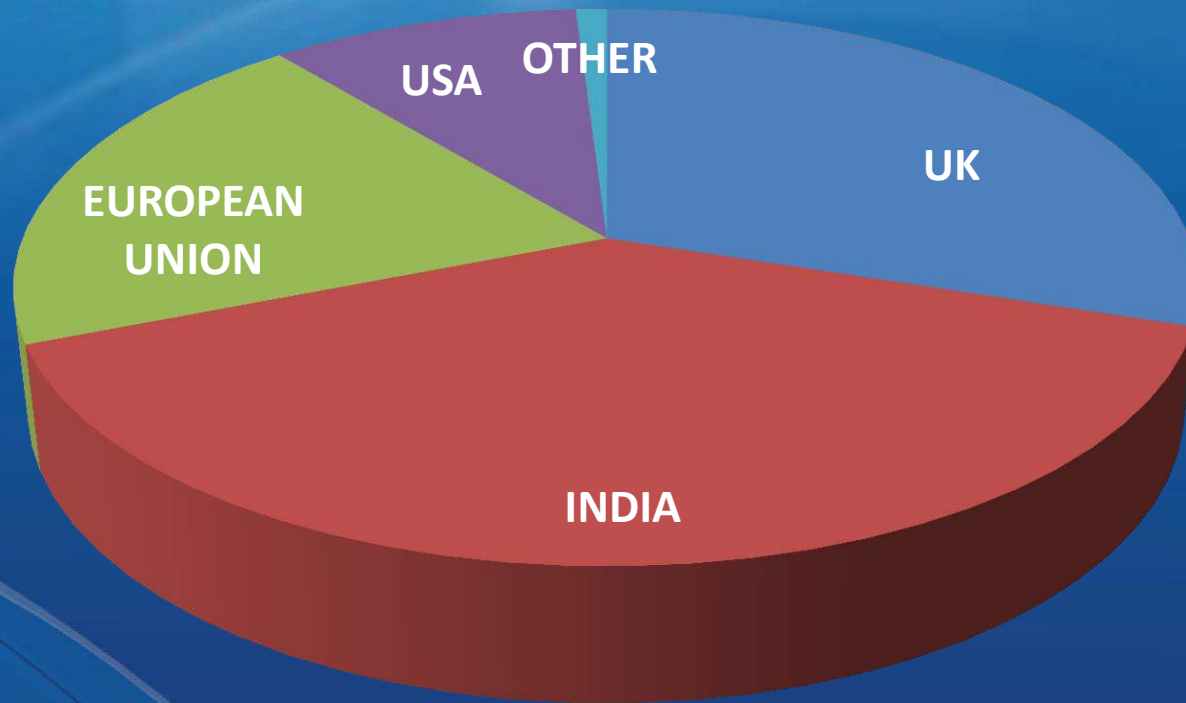


PRODUCT RANGE

- Adaptors
- Reducers
- Automotive Components
- Hydraulic Fittings
- Electric Fittings
- Quick Connect Couplings
- Cable Glands
- Pneumatic Components
- Refrigeration Fittings
- Sensor Bodies
- Precision Turned Components



COUNTRIES SERVED



MANUFACTURING INFRASTRUCTURE

- British Wickman Multi-Spindle Machines # 24
- German Index Multi-Spindle Machines # 3
- German Index Single Spindle Machines # 2
- Swiss Tornos Sliding Head Stock Machines # 22
- CNC Machines # 36
- CNC Tsugami Sliding Machines # 4
- TMC Machines # 1
- VMC Machine # 10
- Secondary Operation Machines (SPM, Grinding, Rotary Transfer, Threading, Drilling, Milling, Crimping) # 90



MANUFACTURING INFRASTRUCTURE



Wickman Machines # 24
British make 6 spindle automatic lathe



High Volume Production

Reduced Cycle times

Slides retrofitted with CNCs → Accuracy

MANUFACTURING INFRASTRUCTURE



Schutte Machines #3

German make 6 spindle automatic lathe

MANUFACTURING INFRASTRUCTURE

CNC Turning Centers # 36



Low/Mid Volume Production

High Accuracy

Milling and Turn-Mill Capability



MANUFACTURING INFRASTRUCTURE

TMC Turn Mill Center #1



MANUFACTURING INFRASTRUCTURE



MANUFACTURING INFRASTRUCTURE



CNC Tsugami Sliding Machines # 4

MANUFACTURING INFRASTRUCTURE



Index Single Spindle Automats # 2

MANUFACTURING INFRASTRUCTURE

Tornos Machines # 22.

Swiss Make sliding head stock machines

High Accuracy

Small Diameter Turning



EXTRUSION CAPABILITY

In-house Brass ROD Manufacturing gives us,

FLEXIBILITY

Cost Savings

Lower MOQ

Reduced Lead Time

Custom Shapes



EXTRUSION CAPACITY:

300 tons /month

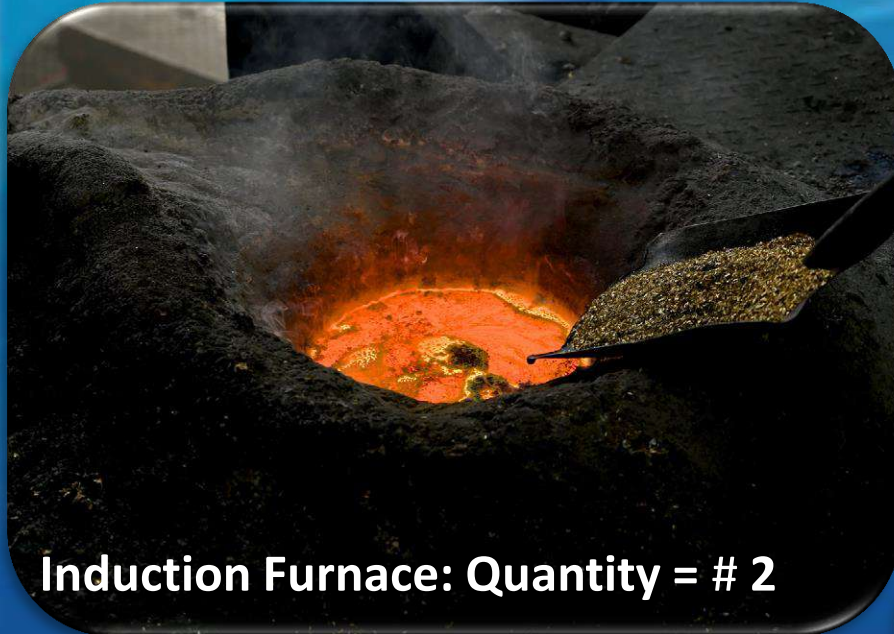
CURRENT

REQUIREMENT: **120 tons /month**



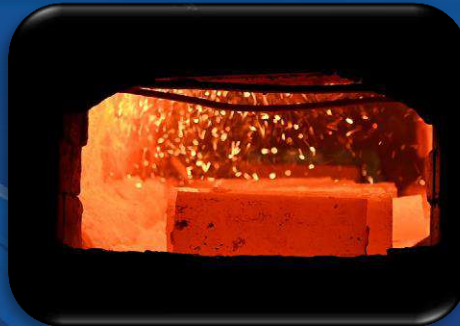
Flexibility to make intricate profiles, non standard grades and small quantities.

EXTRUSION CAPABILITY



Induction Furnace: Quantity = # 2

MELTING CAPACITY: 300
tons/month
CURRENT REQUIREMENT:
120 *tons /month*



Billet Heater



Extrusion Press: Quantity = # 1



EXTRUSION CAPABILITY: Raw Material Inspection

In-house Lab to test
for chemical
composition
elongation & tensile
strength and
Hardness.



PLATING CAPABILITY

PLANT CAPACITY: **90 tons /month**. CURRENT REQUIREMENT: **30 tons /month**
Capability of doing Nickel and Chrome Plating.



Parts are buffed and
polished to meet
surface finish
requirements



INSPECTION FACILITIES:



Profile Projector



Optical Measurement Machine

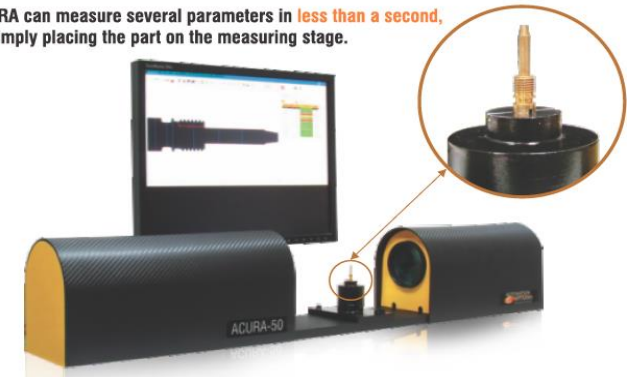


100% Gauging & Sorting Machine

QUALITY CHECKS

- 1st piece approval before production starts
- In process inspection (frequency: hourly)
- Pre-Dispatch inspection (Sampling)

ACURA can measure several parameters in **less than a second**, by simply placing the part on the measuring stage.



Measures outer dimensions of the part & creates SPC reports.



PPM: Under 300.

INSPECTION FACILITIES:

Contracer Instrument



Plating Thickness Tester



PRODUCT RANGE:



Automotive Components

PRODUCT RANGE:



Brass Components



PRODUCT RANGE:

Assemblies



PRODUCT RANGE:

Stainless Steel
Components



PRODUCT RANGE:



Steel Components



PRODUCT RANGE:

Refrigeration Fittings



PRODUCT RANGE:



Brass Components

Sensor Bodies



PRODUCT RANGE:

Quick Connect Couplings



PRODUCT RANGE:

Quick Connect
Couplings



PRODUCT RANGE:

Cable Glands



PRODUCT RANGE:

Shape Fittings



PRODUCT RANGE:



Hose fittings



PRODUCT RANGE:

SS Threaded Barrel



Chrome Plated
Bathroom Fittings



FORGING PRODUCTS:

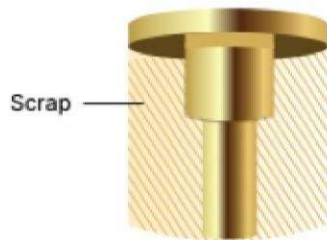
FORGING

80% material utilization



MACHINING

45%



VALUE ADDED SERVICES:

- We provide warehousing services in Europe & North America.
- We provide JIT deliveries.
- We hold KANBAN stock to take care of fluctuations in demand.
- In-House Raw Material plant allows us to pass on the cost benefit to the customer.



Best Exporter in non-ferrous segment by Engineering Exports Promotional Council.

Vendor of the year by Keihin Fie Pvt. Ltd. (A group company of Keihin Corp. Japan) .

We believe in ethical and honorable dealings with our business partners throughout the supply chain.

Our team is committed in striving for excellence in quality, delivery & customer care.



THANK YOU !