



MAPLAST at glance:

- With **over 35 years** of industry **experience** and a team of **43 dedicated professionals**, MAPLAST CZ combines precision, reliability, and flexibility to deliver comprehensive advanced plastic solutions tailored to customer needs.
- We are based in **strategic location** in the heart of Europe, in Brno–Přízřenice, Czech Republic.
- **Total facility area: 7 500 m²**

The 5 pillars of our comprehensive services:

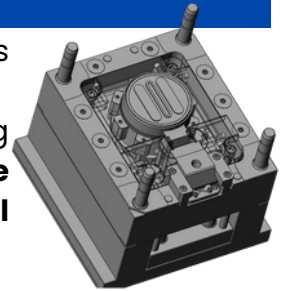
1. Design and development

Based on your needs, quality demands and the technical possibilities, our expert team will deliver **the best product design** hand in hand with the **most suitable mould design**.

2. Moulds production

We offer **custom mould design** including drawing documentation with a focus on maximum performance efficiency, durability, and easy maintenance.

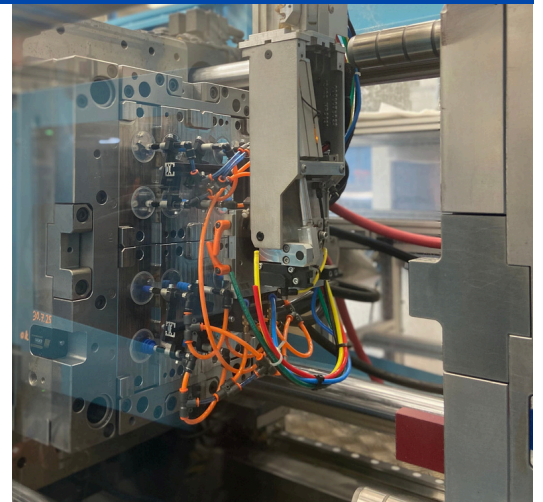
The production of moulds using the latest technologies (as CNC machining centers, electric discharge machining, grinding, heat treatment etc.) **is the guarantee of translating mould design to effective and cost saving serial production.**



3. Injection moulding

Our modern production floor equipped by **28 high-precision injection moulding machines** (brands: KraussMaffei and Demag) with **clamping force ranging from 35 to 1000tons** is allowing us to manufacture **wide range of mouldings from 0,5g to 3500g**. The high efficiency is supported by appropriate peripherals and robotization.

We are **successfully processing all thermoplastics** including **commodities** (PP,PE,PS,ABS,PVC), **engineering plastics** like PA6,PA66,PC/ABS,TPE incl. variety of materials filled with Glass Fibers, Carbon Fibers or Minerals. We are skilled in processing **high performance materials** such as PEEK,PEI,PSU etc. We are also well- experienced in processing **PCR and PIR recykates**.

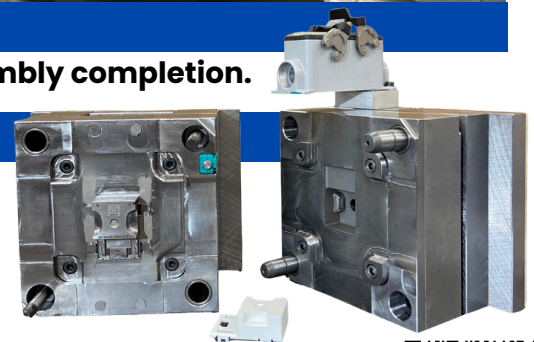


4. Assembly

We are providing options for **simple or highly advanced assembly completion**.

5. Repairs, reconditioning and maintenance of moulds

Our **in-house tool shop** allows us to **efficiently conduct any needed repairs or mould adjustments without any production delay**. In case of production relocation to our site, our tool shop has the expertise to **repair even heavily worn moulds, extending their lifespan**.

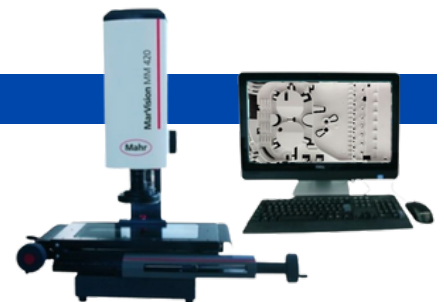




Why to choose us as your partner:

Quality focus

The **high-quality standards** (we are certified for **ISO 9001:2016** and **ISO 14001:2016**, MODULE D PED certification from TÜV and others) **make MAPLAST the right partner for all highly demanding customers.**



High flexibility

Thanks to outstanding project management, expert team and lean production we are able to secure for you **small to large scale production at the most competitive price.**

Customer focus

You tell us what you need, and we will go the extra mile for you at every stage. **Our prime goal is offering clients added value to support their success.**

35-years of experience in demanding segments

We have successfully provided comprehensive services to companies from **the electrical, water management, medical, food packaging and telecommunications industries** for over 35 years.

Besides traditional focus on Central and Western Europe incl. UK, we are also effectively exporting goods to North America and middle East (e.g. Turkey) and North Africa (e.g. Egypt).

Our core customers include ABB s.r.o., ELKO EP, s.r.o., Commscope, Pentair International, Johnson Controls, EMERSON, PSG - dover company (Mouvex), OLDHAM SIMTRONICS, ABLE ELEMENTS s.r.o., Essentra Components, Tyco Fire & Security, KOLLMORGEN Europe GmbH, Hartmann Rico and others.

