



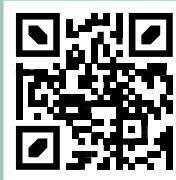
Strengthening Flood Protection and Awareness

Decrease the flood risk during future rainfall events by identifying the areas most at risk at the whole city level.

CONTACT US



RSS-Hydro

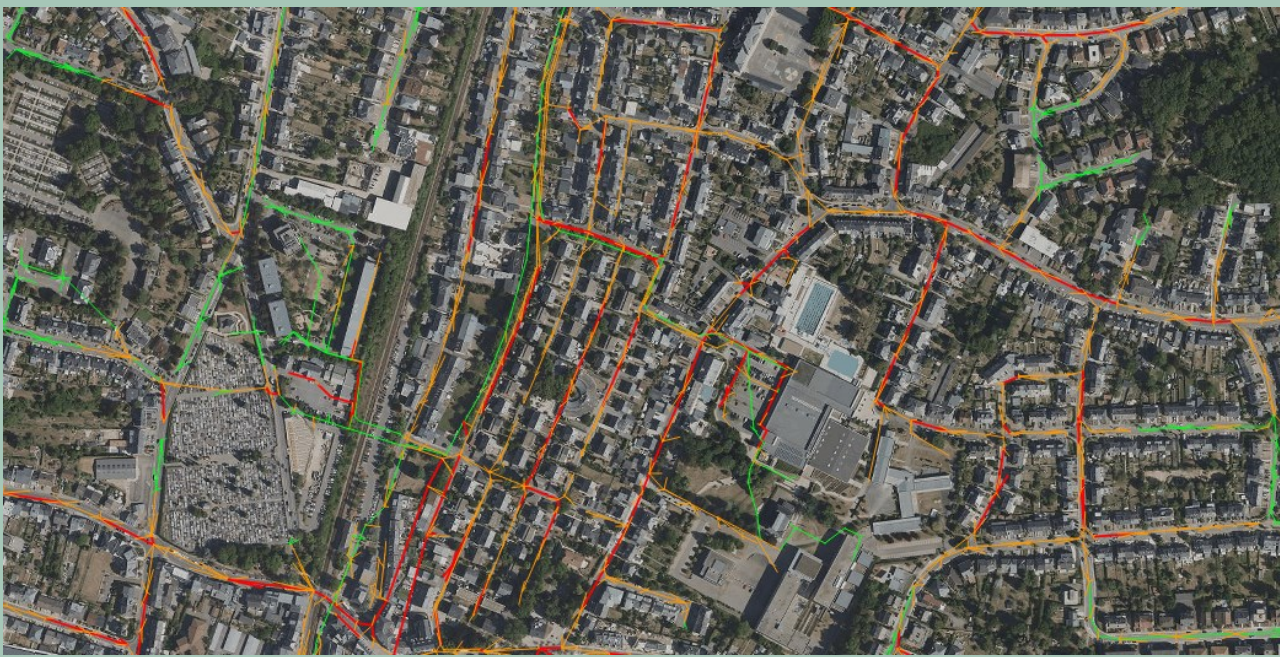


rss-hydro.lu
info@rss-hydro.lu

SafeCity

The Ultimate Flood
Modeling Intelligence





Complete Flood Risk Assessment

- SafeCity is a building-scale assessment that incorporates high-resolution mathematical modeling of fluvial and pluvial floods, also integrating the sewer and drainage systems.
- It helps municipalities, financial risk industry, engineering offices, property developers, and architect studios reduce exposure of current and future urban developments.

Versatility

SafeCity allows to include numerous scenarios to assess:

- Surface runoff
- Current and planned underground drainage system
- Exposure, vulnerability and risk
- Climate change
- Current and new buildings and infrastructures
- Flood protection methods
- Ecological restoration
- Land use change
- Dam break scenarios

Visualization

The outputs of the model offer the possibility of creating multiple types of visualization of the results:

- Maps
- 3D visualization
- Videos



Forecasting

Flood forecasting based on rainfall forecast is also possible with SafeCity. The model takes the forecasted rain as an input to estimate the flooding that can be expected on the studied area.