



**we convey
the world** » » »

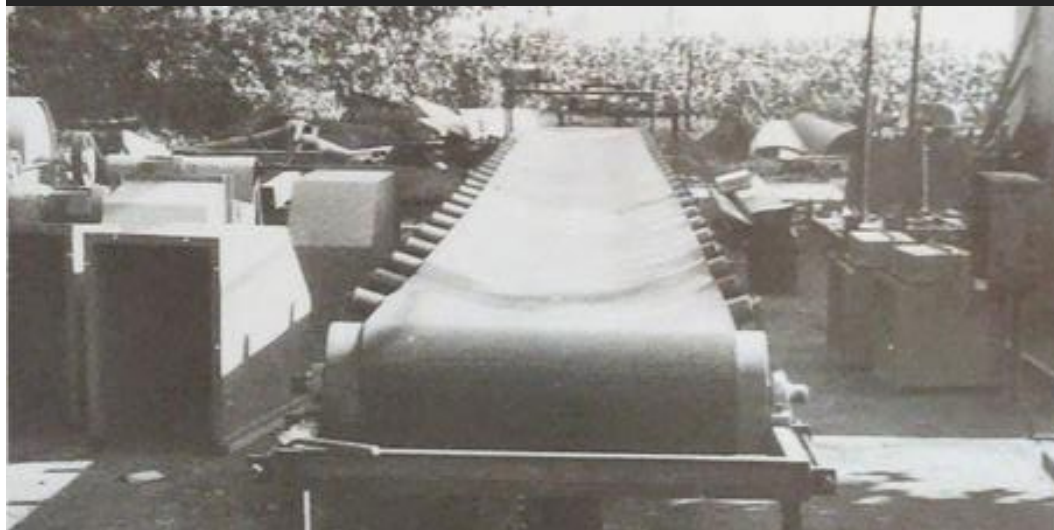
Company presentation

V. 04



1954

Trasmec was founded in **Italy**, initially specializing in the production of conveyors for the **agricultural sector**.



1970-1980

Collaboration begins with the main contractors in the **wood panel industry** in Italy, consolidating Trasmec's presence in the sector.



1990

Trasmec begins its first international activities, becoming a reference name for all major producers of wood-based panels worldwide.





2003

TRASMEC - ROMANIA
Opening of the facility in Romania, making the first step in the process of internationalization of our production. Today, this facility employs approximately 60 persons and has a turnover of around 6 million euros.





CLEAN ENERGY TECHNOLOGY

VYNCKE

With over 100 years of experience and craftsmanship in combustion technology, they deliver **tailor-made energy solutions to industries and energy providers around the globe.** With approximately 250 employees, the company boasts a turnover of 150 million euros.

**2012**

Trasmec China was founded together with VYNCKE. The initiative aimed at reducing transportation costs in Asia.

2020

VYNCKE joins Trasmec, which also became its **primary global supplier** for boilers and ash systems. This partnership helped Trasmec China to reach a total revenue of 9 million euros.



Since 1983, A.R.C.E.M.I. Impianti has been supplying machinery and complete systems for the lifting, extraction, and dosing of powdered and granular materials. Its technical expertise has allowed the company to establish itself in the industry as a synonym for precision and an absolute guarantee of quality. With a turnover of 3 million euros, the company currently employs 15 people.

2023

TRASMEC - INDIA
The new facility in India opens, now employing 20 people and achieving a turnover of 3 million euros.



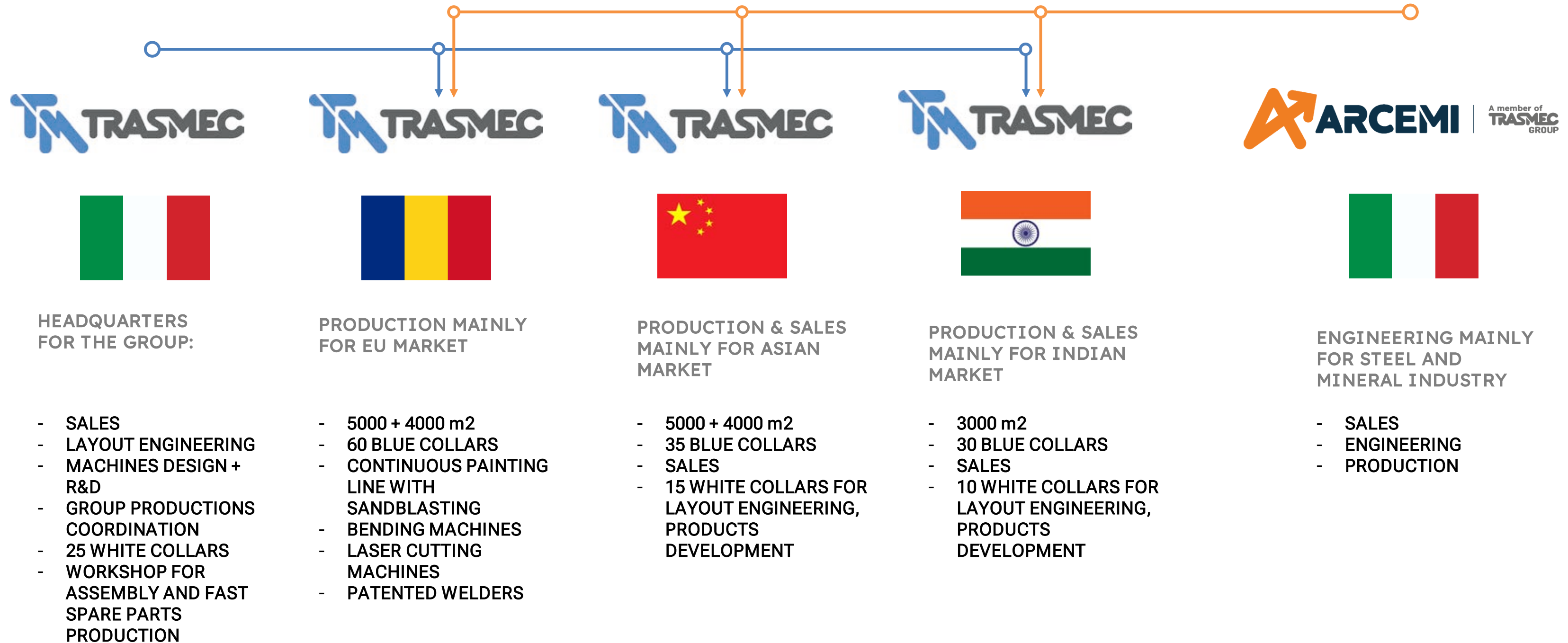
2024

Trasmec finalizes the acquisition for control of A.R.C.E.M.I. Impianti Srl



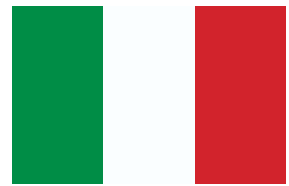
TODAY

We are proud of our four facilities in Italy, Romania, China, and India and of our conveyor systems installed in over 40 countries worldwide, from the USA, Latin America, and Europe to Asia, Australia, South Africa and Egypt. While we celebrate our achievements, we remain dedicated to driving further growth and innovation.





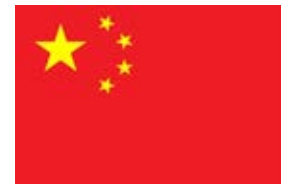
REFERENCES



**TECHNICAL & SALES
REFERENCE**

Eng. Stefano Ferrari

sales@trasmec.com



**TECHNICAL & SALES
REFERENCE**

Mr. Ignaas Decklerck

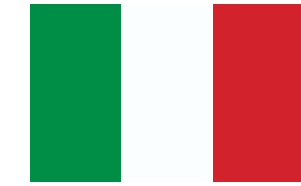
sales@trasmec.com



**TECHNICAL & SALES
REFERENCE**

Mr. Mateesh Rai

sales@trasmec.com



**SALES
REFERENCE**

Mr. Giovanni Belleli

sales@arcemi.com





COUNTRIES WHERE TRASMEC OPERATED

UP TO 2025
4 PRODUCTION UNITS

Italy
Romania
India
China



CERTIFICATION
UNI EN ISO
9001:2015

CERTIFICATION
EN ISO
3834-2





EXPERIENCE
OVER **70** YEARS
OF TM

55M €
TURNOVER

WORLDWIDE
REFERENCES

+200
PEOPLE

PRODUCTION

FOUR UNITS



ITALY

ROMANIA

CHINA

INDIA

25.000 M²



WOOD PANELS



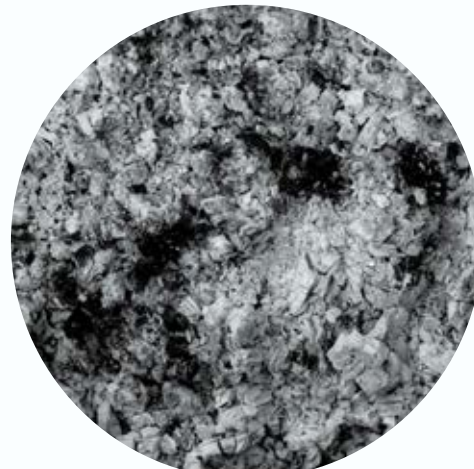
BIOMASS



PELLETS



AGRIFOOD



ASHES



RDF



CEMENT,
LIME &
GYPSUM



FERTILIZERS



AGRIBULKs



CHEMICALS



ALTERNATIVE
FUELS &
BIOMASS



MINING &
MINERALS



WASTE
INCINERATION



METALLURGY



PORTS &
TERMINALS



POWER PLANTS



FOUNDRIES

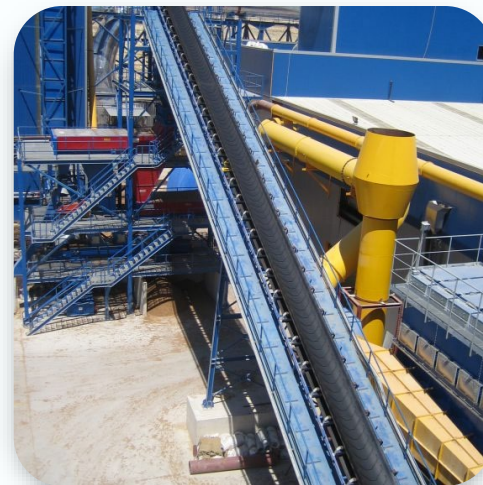




CONVEYORS



**CHAIN
CONVEYORS**



**BELT
CONVEYORS**



**SCREW
CONVEYORS**



**BUCKET
ELEVATORS**



SEPARATORS



DIVERTERS



ASH CONVEYORS



**STEEL PLATE
CONVEYORS**



SPECIAL
CONVEYORS



WINCHESTER



THOR
STEEL PLATE



WATER COOLED
SCREWS



MOVING
FLOORS



TRAVELLING
SCREWS



WEIGHING
SCREWS



SHAFTLESS
SCREWS



HYDRA WATER
BATH



SCREW
BUNKERS



STEEL PLATE
CONVEYORS

STORAGE & EXTRACTION SYSTEMS





CONVEYORS



**SCREW
CONVEYORS**



**CHAIN
CONVEYORS**



**APRON
FEEDERS**



**PAN
CONVEYORS**



**BUCKET
ELEVATORS**

OTHER CONVEYORS

- Apron feeders
- Bucket elevators
- Drag chain conveyors
- Drag chain feeders
- "Z" type chain bucket elevators
- "Z" type pocket belt conveyors
- Screw conveyors
- Stockpilers reclaim feeders
- Pan conveyors
- Belt conveyors
- Sizers and roller screens
- Ship and barge loading systems
- Eco hoppers
- Storage systems and moving floors
- Ash/slag extractors
- Loading spouts
- Accessories equipment
- Air slides
- Spillage conveyors
- Engineering
- Skip
- Guaranteed spare parts



01



ON SITE SURVEYS

On site surveys with
3D laser scanner



02

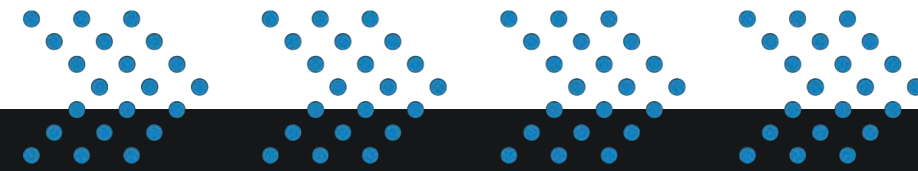


LAYOUT ENGINEERING

Complete integrated
layout designs.



SERVICE



FAST

**REACTIONS
PROBLEM SOLVING
SPARE PARTS PRODUCTION DELIVERY**

- Specialists ready to go on site
- Supporting technical persons in the HQ

**TRASMEC is always on the solution side
and not on the problem side**





Trasmec srl - Italy

Via Bergamo, 2/A – 26011 Casalbuttano (CR) Italy | +39 0374 364011



Trasmec India Private Limited - India

PAP S-80, Chakan Industrial Area, Phase 2, Village Sawardari, Taluka, Khed, Pune - 410501, India



Trasmec Conveying Systems Co., Ltd. - China

B1, Huaping (Kunshan) Intelligent Manufacturing Park, No.111, Nansong Road,
Kunshan Hi-tech Industrial Development Zone, Suzhou, Jiangsu, China | +86 180 1268 8540



SERVICE – SUPPORT

service@trasmec.com

SPARE PARTS

spares@trasmec.com

NEW PROJECTS GENERAL TECHNICAL INFOS OFFERS

sales@trasmec.com



**CONVEYING &
STORAGE SOLUTIONS**



[GO BACK TO EQUIPMENT](#)





[GO BACK TO EQUIPMENT](#)





[GO BACK TO EQUIPMENT](#)



[GO BACK TO EQUIPMENT](#)



[GO BACK TO EQUIPMENT](#)





[GO BACK TO EQUIPMENT](#)





[GO BACK TO EQUIPMENT](#)





[GO BACK TO EQUIPMENT](#)





[GO BACK TO EQUIPMENT](#)



[GO BACK TO EQUIPMENT](#)





[GO BACK TO EQUIPMENT](#)





[GO BACK TO EQUIPMENT](#)





[GO BACK TO EQUIPMENT](#)





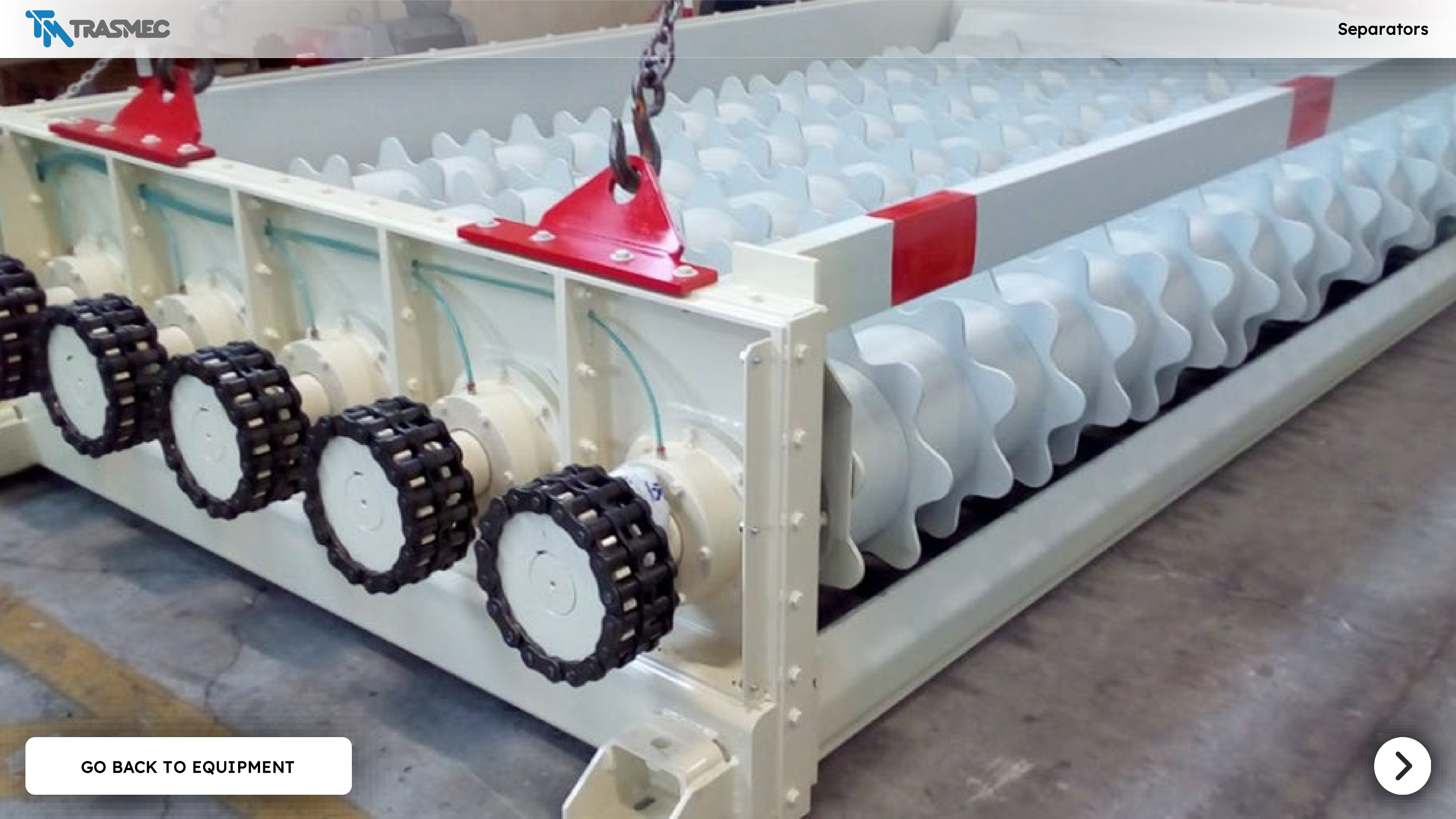
[GO BACK TO EQUIPMENT](#)





[GO BACK TO EQUIPMENT](#)





[GO BACK TO EQUIPMENT](#)





[GO BACK TO EQUIPMENT](#)





[GO BACK TO EQUIPMENT](#)





[GO BACK TO EQUIPMENT](#)





[GO BACK TO EQUIPMENT](#)





[GO BACK TO EQUIPMENT](#)





[GO BACK TO EQUIPMENT](#)





[GO BACK TO EQUIPMENT](#)





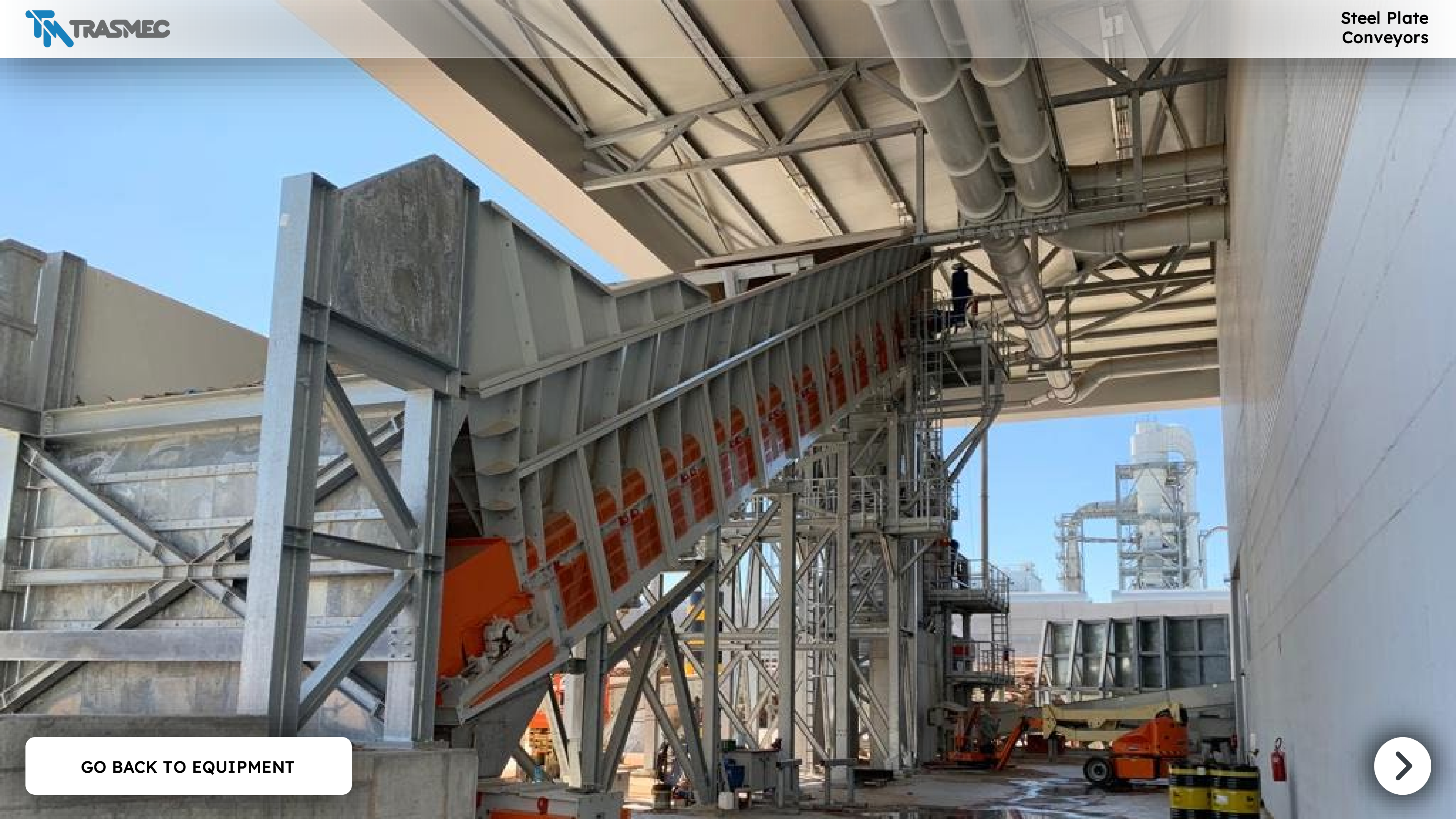
[GO BACK TO EQUIPMENT](#)





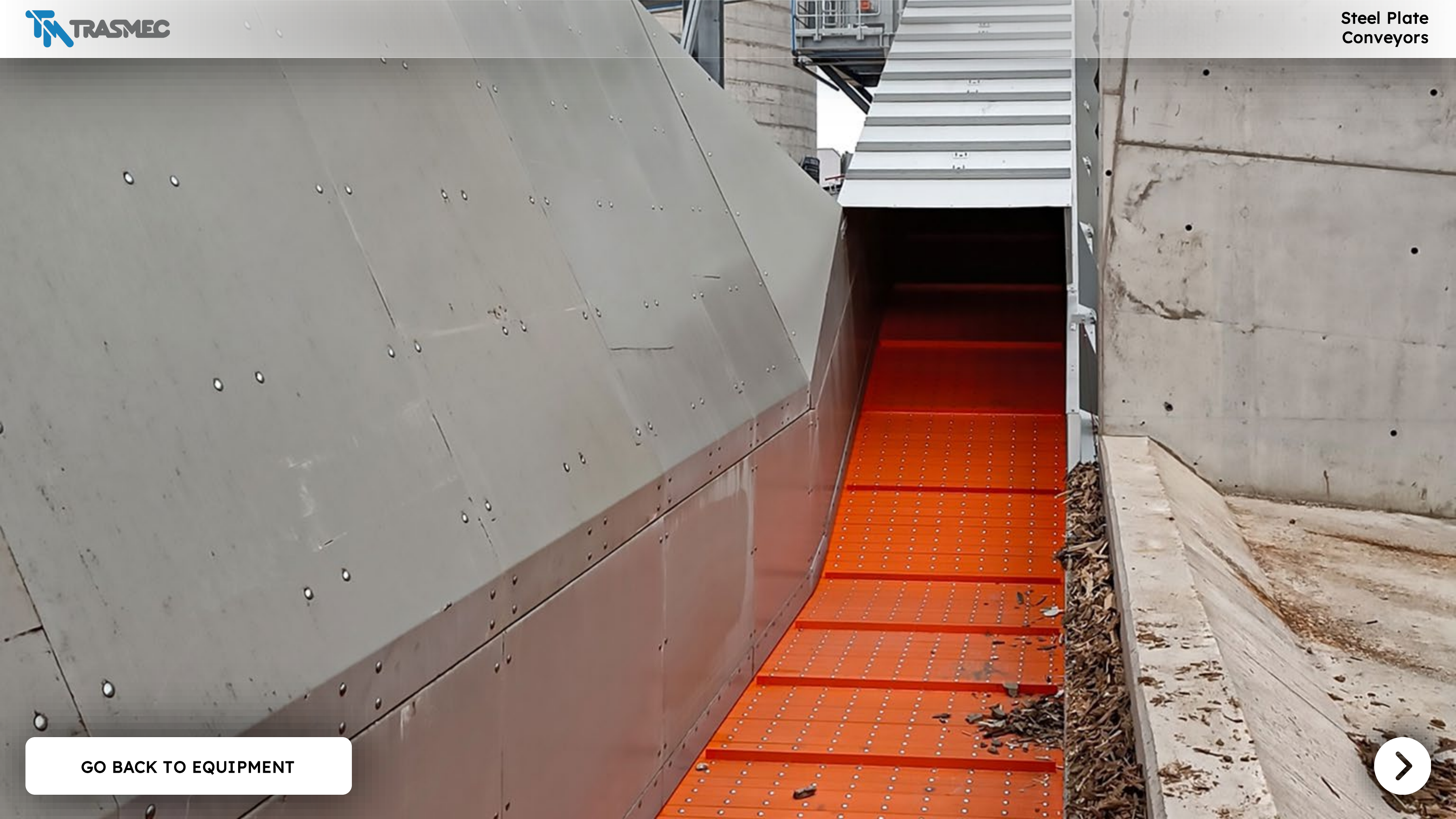
[GO BACK TO EQUIPMENT](#)





[GO BACK TO EQUIPMENT](#)





[GO BACK TO EQUIPMENT](#)





[GO BACK TO EQUIPMENT](#)





[GO BACK TO EQUIPMENT](#)





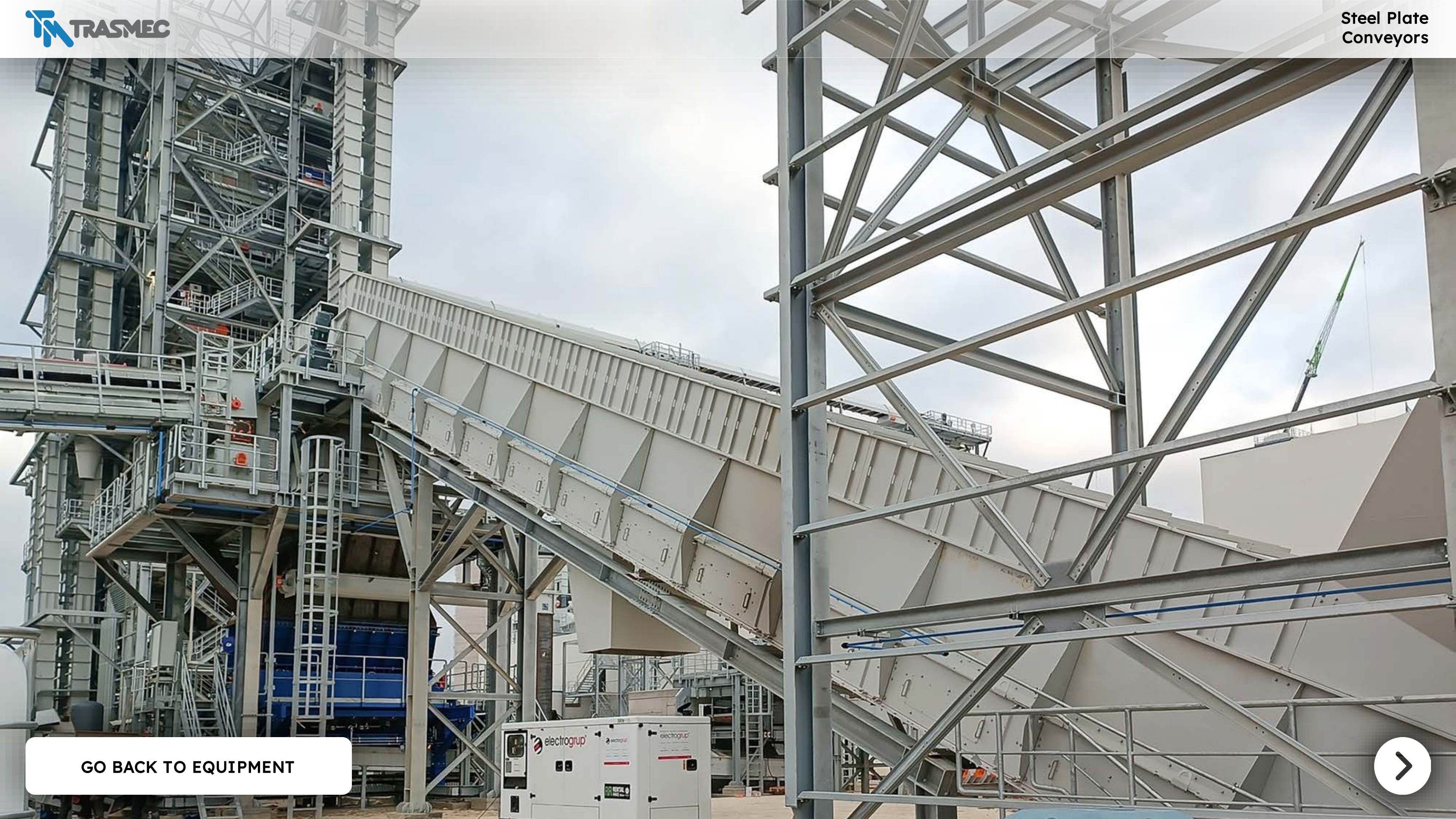
[GO BACK TO EQUIPMENT](#)





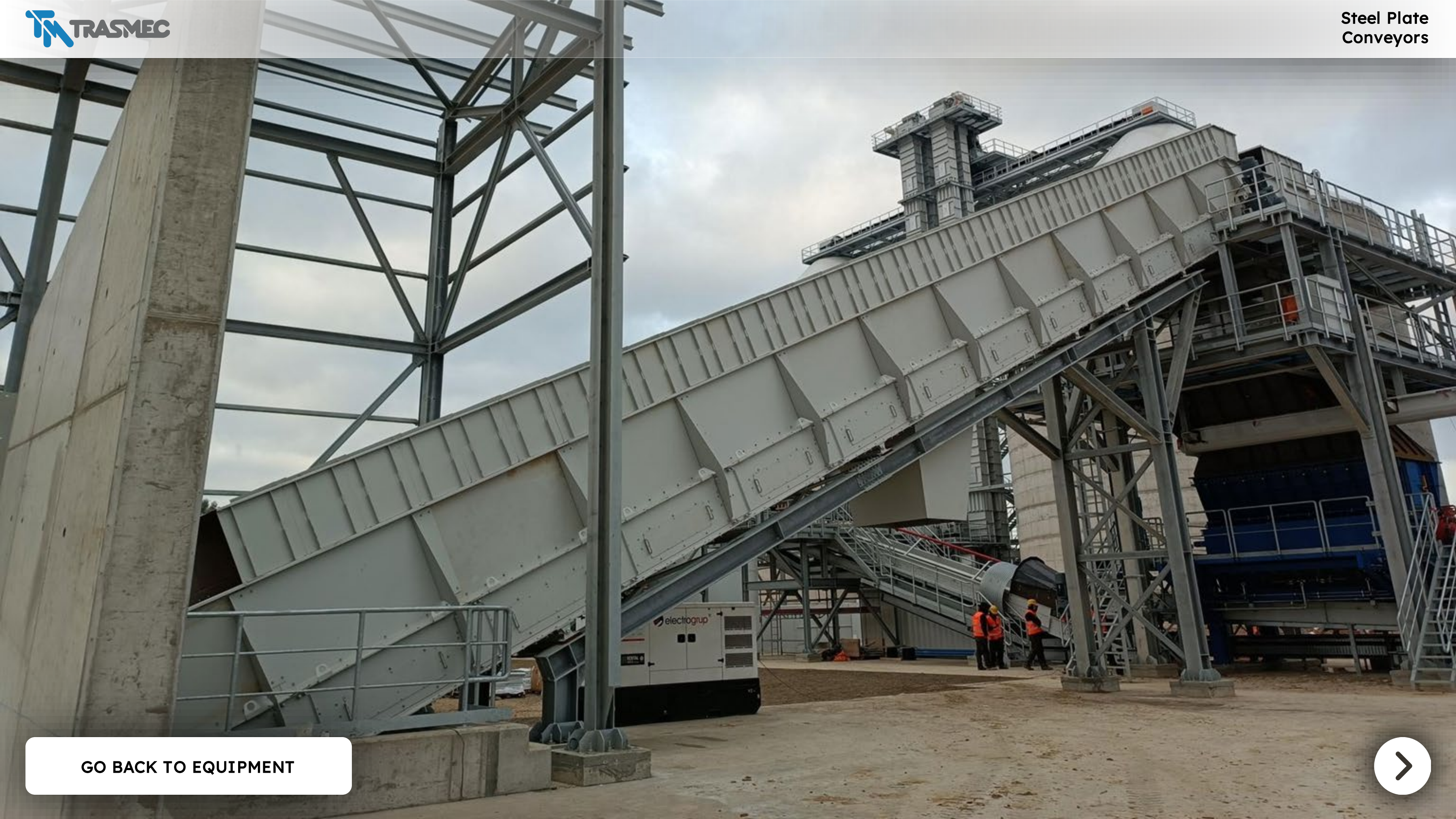
[GO BACK TO EQUIPMENT](#)





[GO BACK TO EQUIPMENT](#)





[GO BACK TO EQUIPMENT](#)





[GO BACK TO EQUIPMENT](#)





[GO BACK TO EQUIPMENT](#)





[GO BACK TO EQUIPMENT](#)





[GO BACK TO EQUIPMENT](#)





[GO BACK TO EQUIPMENT](#)





[GO BACK TO EQUIPMENT](#)





[GO BACK TO EQUIPMENT](#)





[GO BACK TO EQUIPMENT](#)





[GO BACK TO EQUIPMENT](#)





[GO BACK TO EQUIPMENT](#)





[GO BACK TO EQUIPMENT](#)





[GO BACK TO EQUIPMENT](#)





[GO BACK TO EQUIPMENT](#)





[GO BACK TO EQUIPMENT](#)





[GO BACK TO EQUIPMENT](#)





[GO BACK TO EQUIPMENT](#)





[GO BACK TO EQUIPMENT](#)





[GO BACK TO EQUIPMENT](#)





[GO BACK TO EQUIPMENT](#)





[GO BACK TO EQUIPMENT](#)