

A close-up photograph of industrial machinery, likely a lathe or mill, showing various metal components, bolts, and a part with the identification number 040308. The image is in sharp focus, highlighting the metallic textures and mechanical details.

MANUFACTURING SOLUTIONS FOR YOUR INCREASED GROWTH AND EARNINGS

HTP company presentation

JANUARY 2025 | CREATED BY: JAN TOMÁNEK

**The main value is all our employee.
Thanks to their skills, we can
improve the Quick Response
Manufacturing and reduce the Total
Cost Ownership for our clients.**

JAN TOMÁNEK - CEO OF HTP

Company Facts

Company Name: **HTP s.r.o.**
Headquarters: **Žirovnice, Czech Republic**
Established: **1996**
Proprietor: **Tomanek Family Foundation**
No. of Employees: **175**
Annual Turnover: **23.500.000 €**
Production Plants: **Žirovnice, Pacov**
Total Production Area: **22.000 m2**



Total Quality Management

OBTAINED QUALITY CERTIFICATES

ISO 9001:2015
ISO 14001:2015

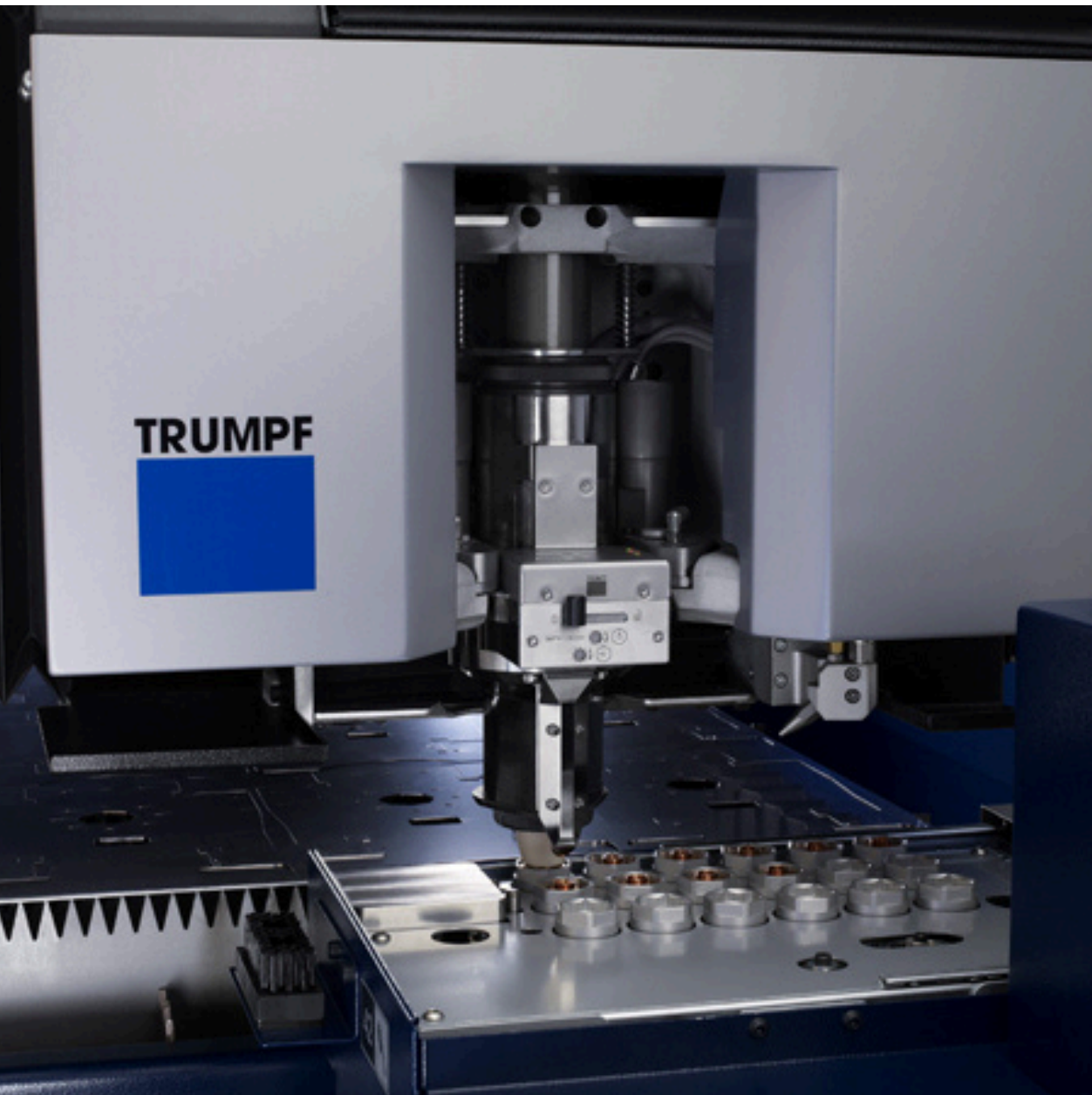
ISO 3834-2:2005
EN 15085-2:2020
UL-60950-1

OTHER QUALITY SYSTEMS APPLIED

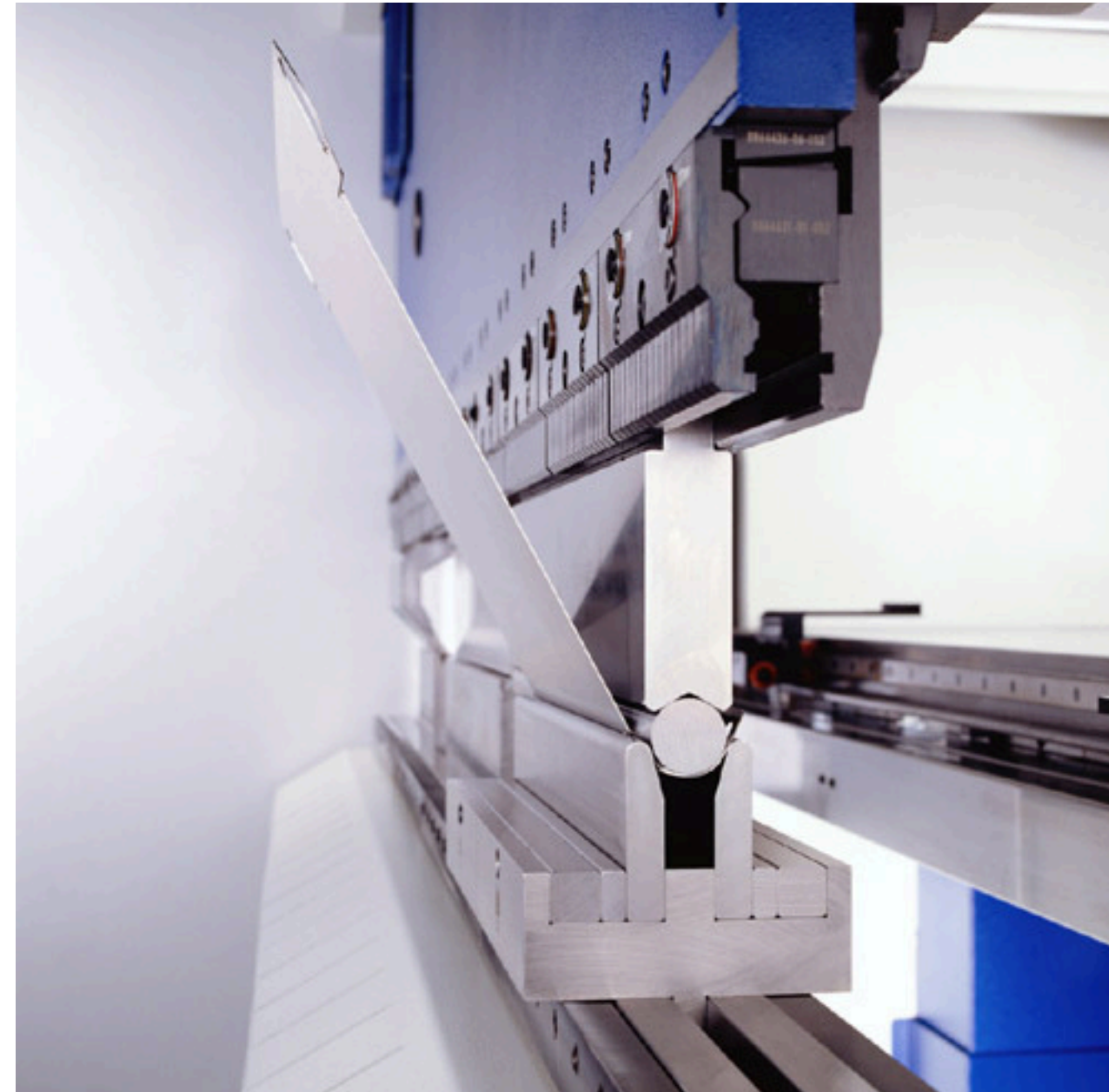
IATF 16949
IN MACHINING SHOP
ISO 13485 IN PROGRESS
FMEA
SQA

PPAP
8D REPORTING
CORPORATE ERP
LEAN PRODUCTION
IMPLEMENTATION

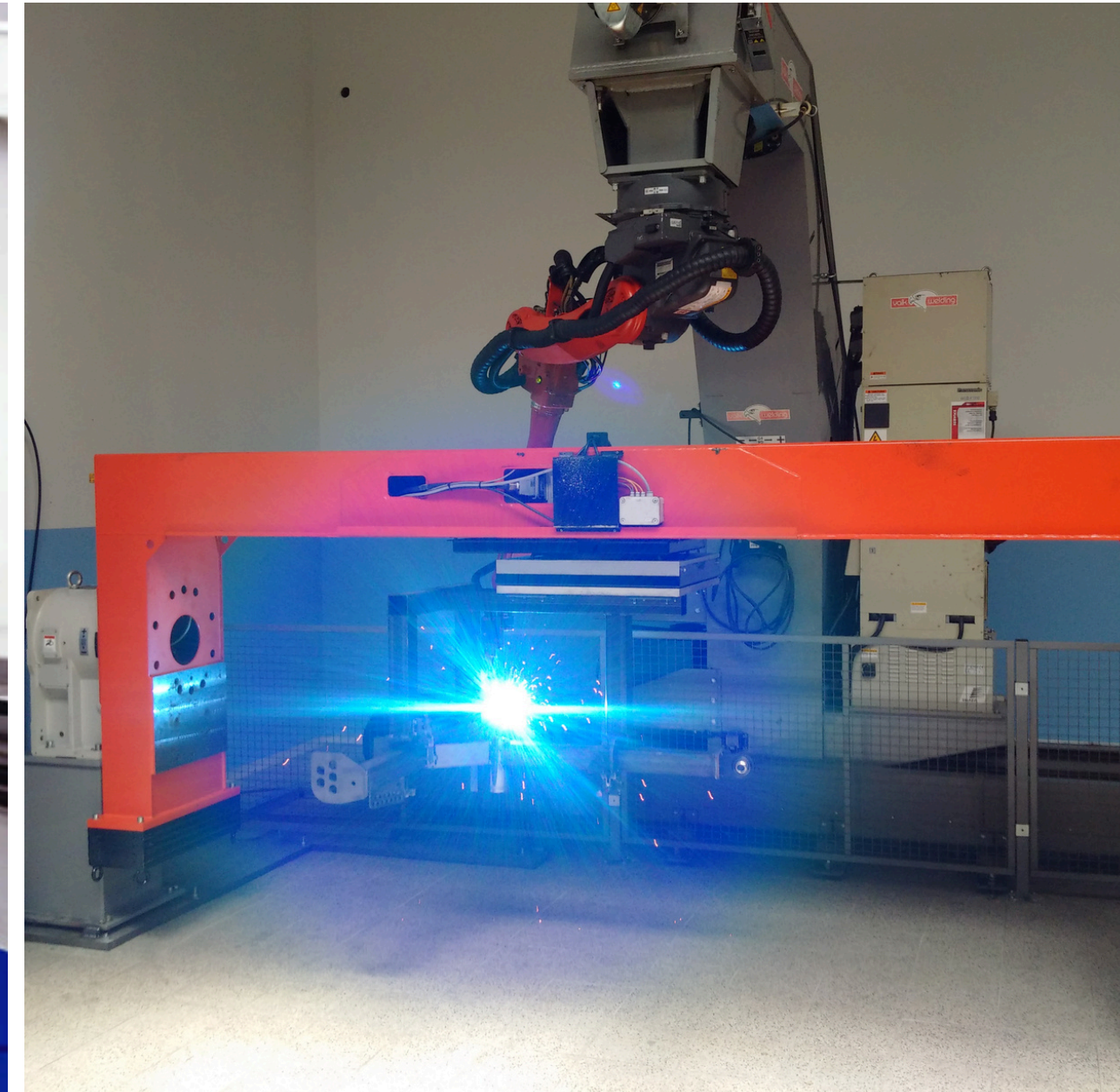
TECHNOLOGY IN-HOUSE



LASER CUTTING & PUNCHING
th. 0,5 - 25,0 mm
sheets 1.500 x 3.000 mm



BENDING & STAMPING
50, 80, 120, 170 & 230 tons
max. th. 6 mm by 4.000 mm



7 ROBOT WELDING CELLS
max. 500 kg
4.000 x 1.800 x 1.500 mm

TECHNOLOGY IN-HOUSE



MANUAL WELDING
36 welders
EN ISO Personal certification



CNC MILLING
4 & 5 Axis Vertical & Horizontal Centers
2.200 x 1.800 x 1.500 mm



CNC TURNING
dia. 2 - 60 mm from 3.000 mm bars
max. dia. 500 mm from cut piece

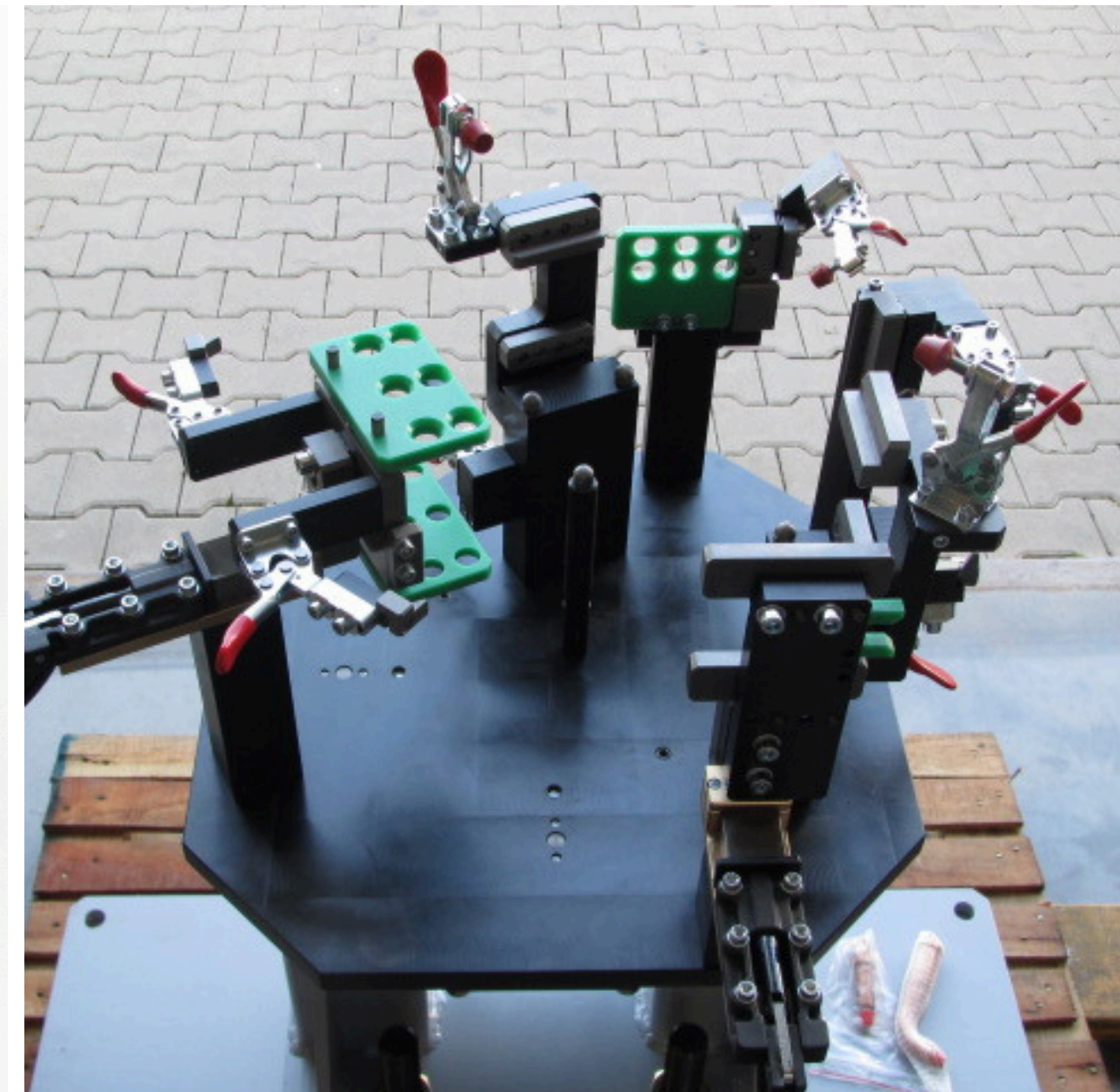
TECHNOLOGY IN-HOUSE



SURFACE FINISHING
Automatic Continuous Powder
Painting Line
max. 3.000 x 1.800 x 1.500 mm



ASSEMBLY
Net of Subcontractors
Final Packing
JIT Logistics

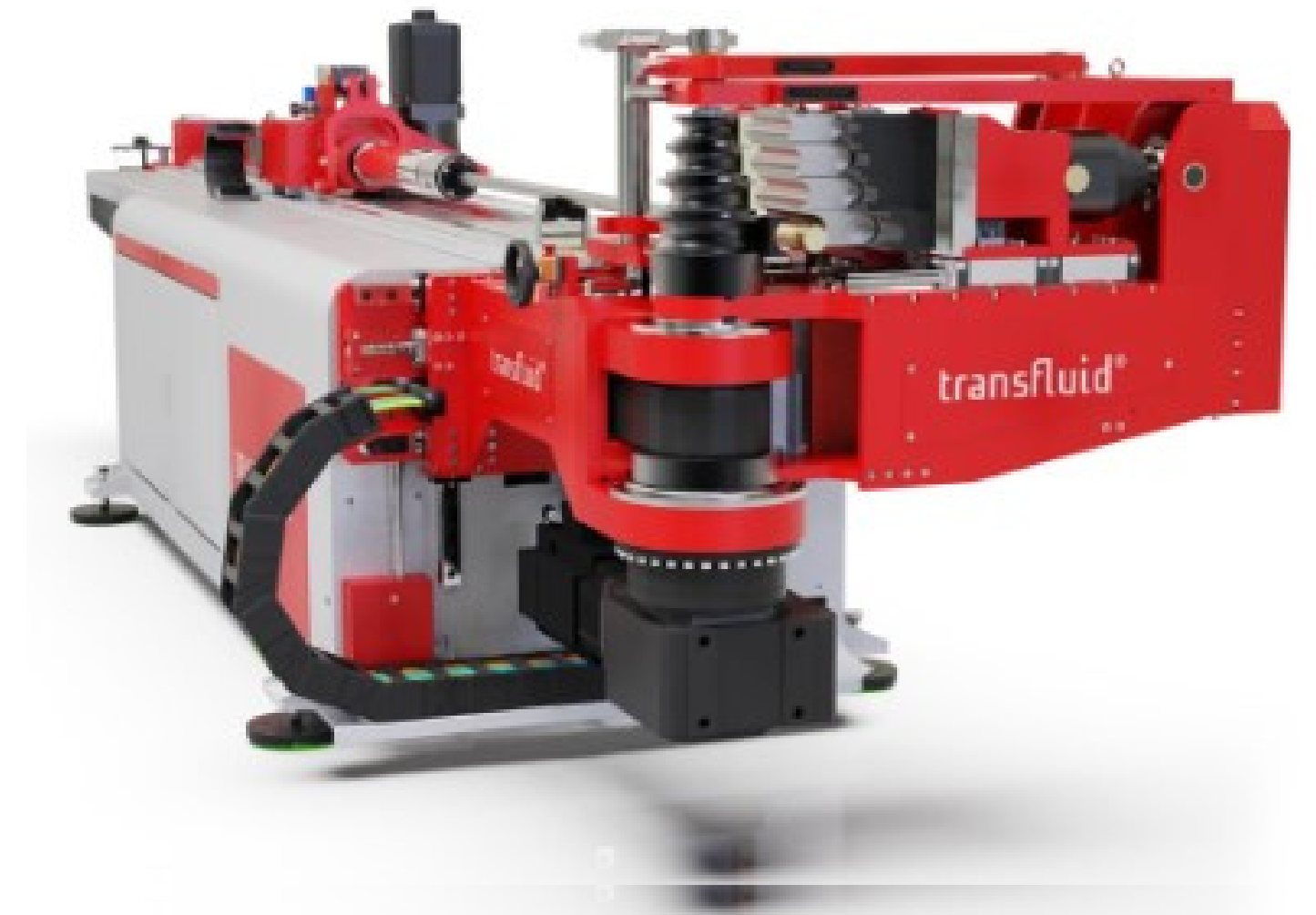


TOOLING & INSPECTION
Tools Design & Production
CAD/CAM Software

NEW TECHNOLOGY IN-HOUSE



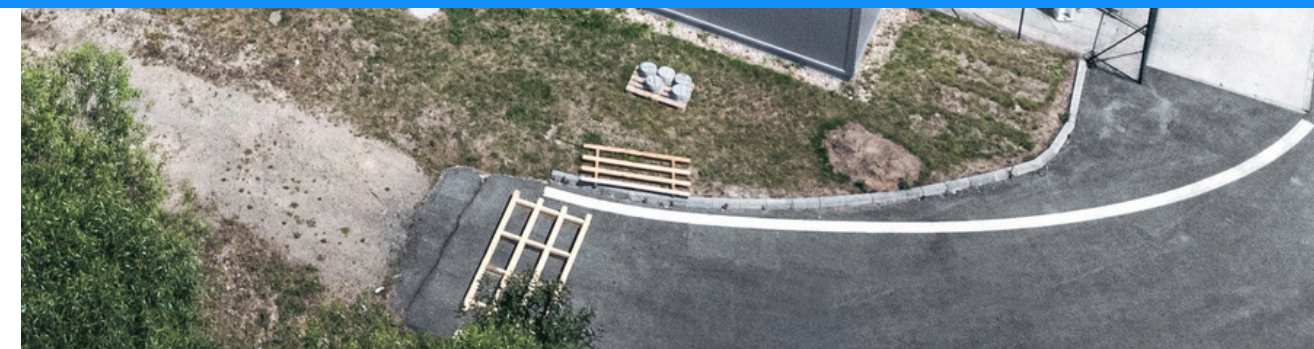
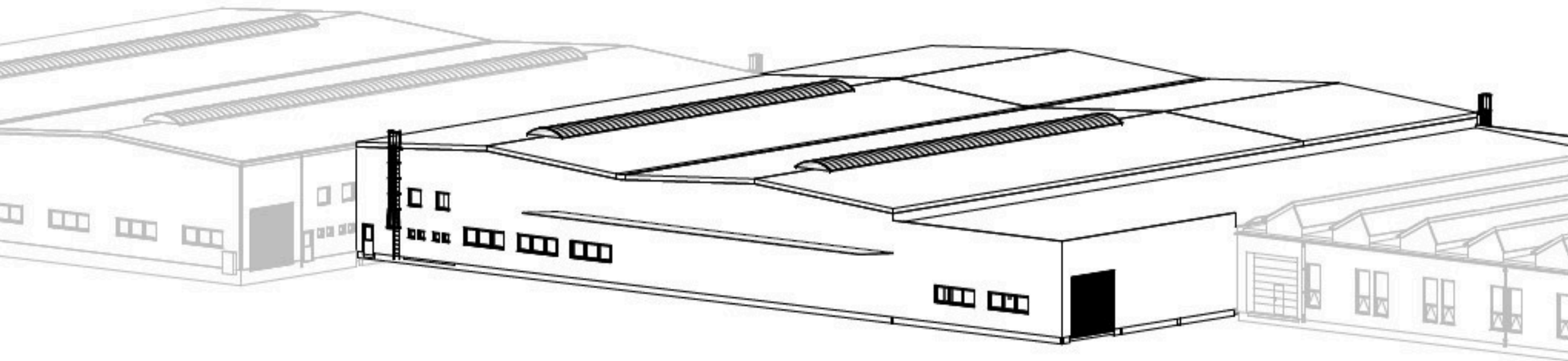
TUBE LASER CUTTING
max. dia. 254 mm, max. th. 10 mm
tubes & profiles 6.500 mm



CNC TUBE BENDING MACHINES
outer dia. 6,0 - 140 mm
max. th. 6 mm

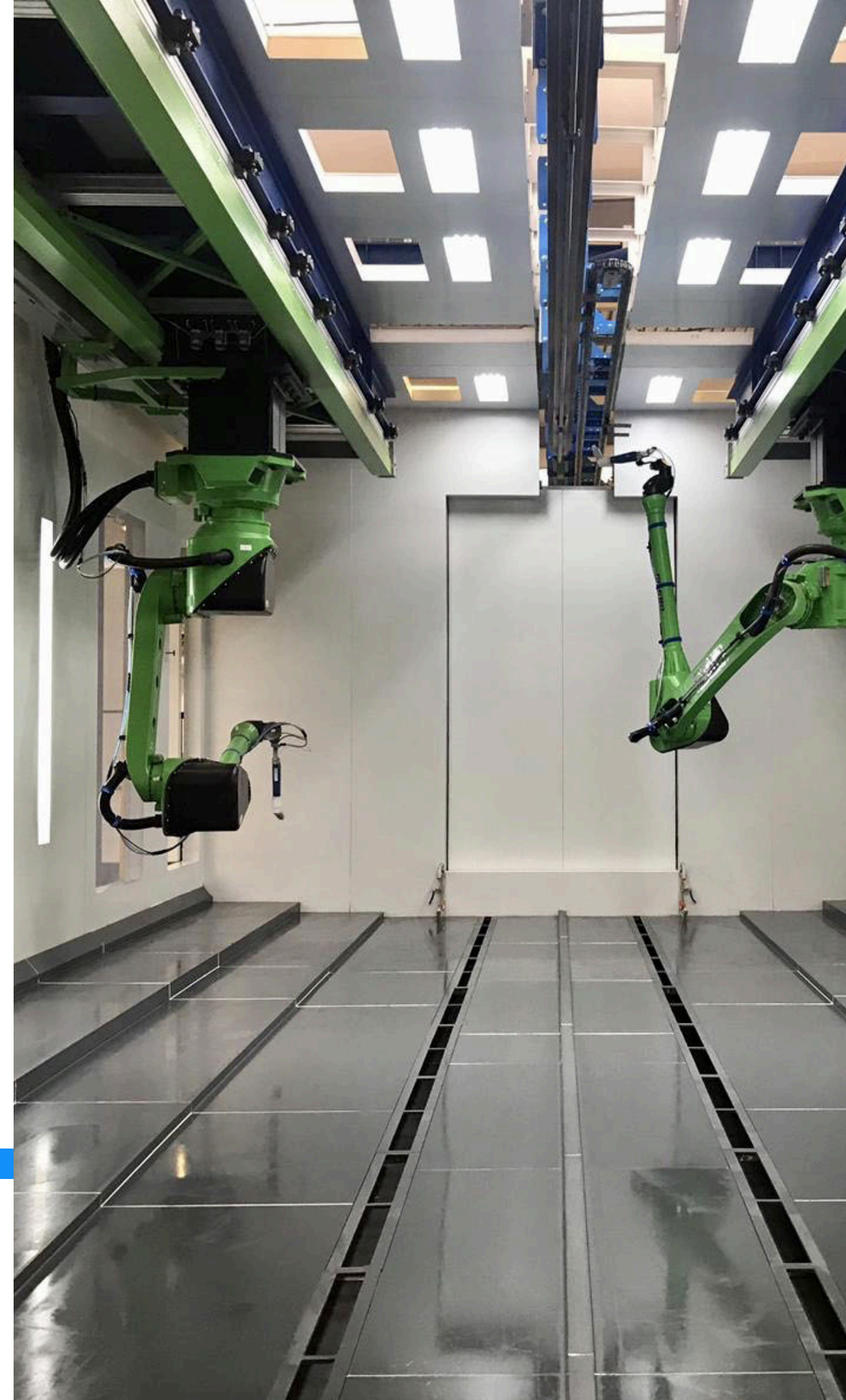
Investment Execution 2024

- New production hall 4.000 m²
- TRUMPF TruLaser Tube 7000 fiber laser cutting machine
- Salt-spray test box for corrosion resistance testing



Investment Plan

- Robotic powder painting line /2025/
- transfluid tube bending machine /2025/
- Salt-spray test box for corrosion resistance testing /2025/
- TRUMPF TruBend 5000 universal robot bending cell /2026/
- 5 axis milling center /2026/
- TRUMPF TruMatic 5000 combi laser-punching machine /2026/



**We have been able to become the unique
supplier for many leading manufacturers**

AGRICULTURE

**RAILWAY,
MUNICIPALITIES,
PUBLIC TRANSPORT**

**MEDICAL, OFFICE
AND LABORATORY
EQUIPMENTS**

**LOGISTIC AND
CONSTRUCTION
MACHINERY**

**AUTOMOTIVE
TRUCKS AND
TRAILERS**

**We believe that this proves in the most convincing way that we are a reliable
partner offering superb quality at competitive prices on the long term.**

Meet the Team

LET'S TALK!

PHONE

+420 565 433 464

EMAIL

info@htpcr.cz

HEADQUARTERS

U Továrny 798, 394 68 Žirovnice, Czech Republic



JAN
TOMÁNEK

Chief Executive Officer
jan.tomanek@htpcr.cz



VĚRA
HANZLOVÁ

Business Director
vera.hanzlova@htpcr.cz



JIŘÍ
CHVÁLA

Business Development Manager
jiri.chvala@htpcr.cz

What can we PRODUCE for you?

We look forward to working with,
to be yours most effective supplier.

WWW.HTPCR.CZ

HTP