

# DEEP TREKKER PRODUCT CATALOGUE

Solving harsh environment situations with fully assembled, tested and ready to use remotely operated vehicles and submersible robots.

## Head office

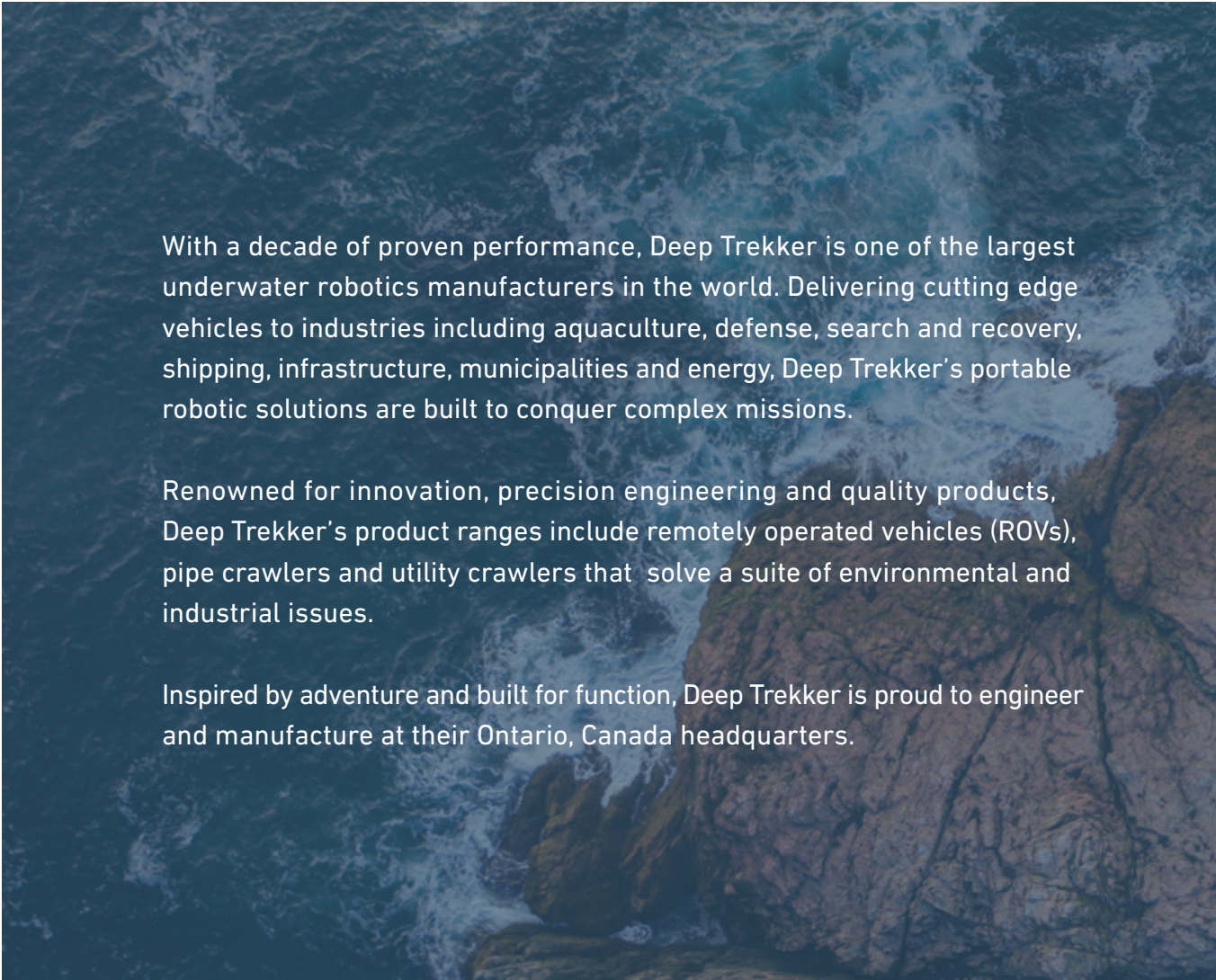
155 Washburn Dr  
Kitchener, ON  
Canada

## Chile Office

Ruta 5 Sur KM 1025 Bodega 5  
(Megacentro1)  
Puerto Montt, Los Lagos, Chile

 **DEEP TREKKER™**

[deeptrekker.com](http://deeptrekker.com)  
[sales@deeptrekker.com](mailto:sales@deeptrekker.com)

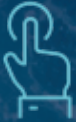


With a decade of proven performance, Deep Trekker is one of the largest underwater robotics manufacturers in the world. Delivering cutting edge vehicles to industries including aquaculture, defense, search and recovery, shipping, infrastructure, municipalities and energy, Deep Trekker's portable robotic solutions are built to conquer complex missions.

Renowned for innovation, precision engineering and quality products, Deep Trekker's product ranges include remotely operated vehicles (ROVs), pipe crawlers and utility crawlers that solve a suite of environmental and industrial issues.

Inspired by adventure and built for function, Deep Trekker is proud to engineer and manufacture at their Ontario, Canada headquarters.

# THE DEEP TREKKER DIFFERENCE



## Easy to Use

Designed with the operator in mind. All-in-one handheld controller and intuitive piloting system.



## Portable

Battery power operation provides a truly portable solution. Freedom to move and deploy without the need for topside power.



## Durable

Built to last and designed to safely conduct underwater inspections in harsh environments.



## Affordable

Innovative solutions for applications big and small. Suitable for all budgets.

# TABLE OF CONTENTS



## **DTG3**

5

The DTG3 ROV allows for advanced power, heightened capabilities and high-end performance at a breakthrough price.



## **PIVOT ROV**

11

Striking the perfect balance between size and power, the PIVOT ROV is equipped with 6 strong thrusters to provide users with stability, power, speed and unmatched control.



## **REVOLUTION ROV**

17

Engineered with carbon fiber and stainless steel, the Deep Trekker REVOLUTION is more powerful than ever seen before.



## **DT CRAWLERS**

23

Designed to simplify complex pipe inspections, our crawlers can be reconfigured for diameters 6" and larger and a variety of pipe materials.



## **DT640**

27

Designed to work in tough underwater environments with both rubber or magnetic wheel options and a zero turning radius.

# DTG3 REMOTELY OPERATED VEHICLE [ROV]

Intelligent programming meets unmatched portability. This commercial grade ROV's advanced capabilities combined with comprehensive add-ons make it the best in its class.





## MEET THE DTG3 ROV

The DTG3 is a mini observation-class underwater ROV built to provide operators the ability to quickly deploy and visually inspect underwater environments within minutes.



200m (656ft)  
depth rating



Low maintenance



HD camera



Expeditionary  
transport case



### Complete portability

Quickly deploy this ROV with one case and a self contained battery operated system.



### Unmatched maneuverability

The patented pitch system gives the pilot ultimate control.



### Powered by BRIDGE

Enhanced operation capabilities with a seamless technology platform.

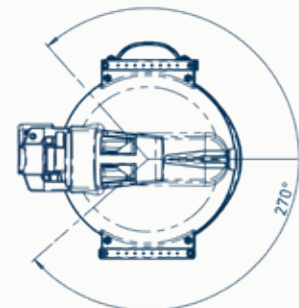
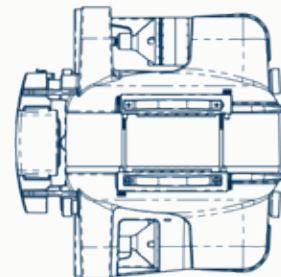
## GENERAL SPECIFICATIONS

### ROV General Specs

Width :	325 MM (12.8")
Height :	258 MM (10.2")
Length :	279 MM (11.0")
Weight (in air) :	8.5 KG (18.7 LB)
Body Material :	Die Cast Aluminum
Window Material :	Acrylic
Depth Rating :	200 M (656 FT)
Operating Temp :	-10°C to 50°C (14°F – 122°F)
Case (optional) :	Custom Pelican Air 1637 Handle and Wheels
Drives/Thruster:	Magnetically Coupled/Sealed
Warranty :	1 Year – Parts and Labor (optional 2-3 yrs)

### ROV Electrical System

System Voltage :	19.2 VDC
Thruster Control :	Independent Infinitely Variable 100% Reversible

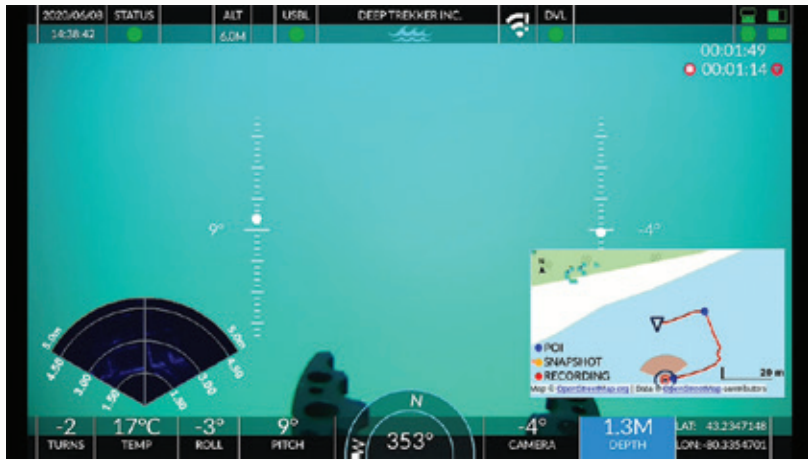


Deep Trekker reserves the right to amend these specifications at any time without notice.

# FULL HD VIDEO RECORDING

The HD or 4K upgradeable internal camera is easy to use, with live zero latency viewing on the handheld controller and a 270-degree rotating field of view. Switch to photo mode to snap photos up to 8 megapixels. Record inspections and underwater operations directly to the handheld controller.

The patented pivoting technology brings the ability to adjust the angle of your camera, lights and laser scaler 270-degrees above and below the unit while holding its position in the water. An enhanced viewing and recording experience provide smarter inspections with its live, full HD video and weatherproof, handheld controller.



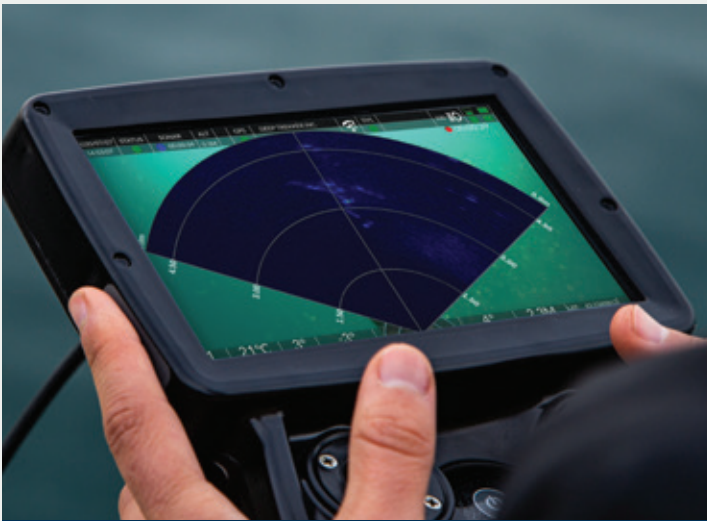
View data from the HD camera, sonar and USBL simultaneously on your handheld controller and easily swap screens for simple navigation.



## DTG3 ROV | A SURVEYORS DREAM

Want an extremely quick to deploy and reliable underwater drone for inspections and surveys? The DTG3 makes getting eyes underwater easier than ever before. The base DTG3 package gets you everything you need to get started with inspections, with plenty of modular options to enhance the ROV's capabilities.

The precision thruster at the rear of the vehicle enables users to move up and down without utilizing the pitch function. With the precision thruster engaged, pilots can make depth changes without any rotation of the ROV, making it ideal for the trickiest of observation needs.



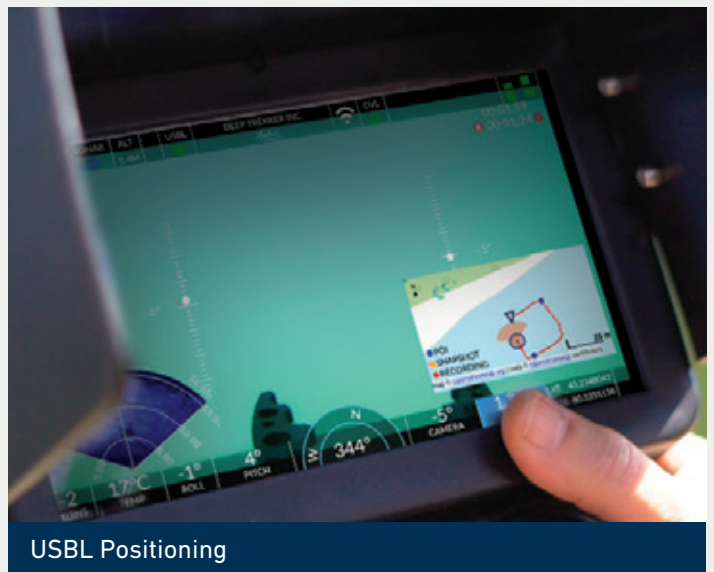
Imaging Sonar



Post-Dive Logging



Precision Thruster



USBL Positioning

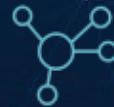
## POWERED BY BRIDGE TECHNOLOGY



Simplified control



Seamless integrations



Constant communication



Enhanced operations

An intelligent, technology platform from Deep Trekker. An operating system designed with custom hardware and software; for control, integration, communication and enhanced operation.

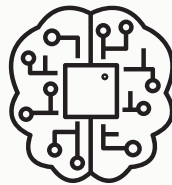
Enable the ability to fuse all sensor data into one handheld, weatherproof controller. See positional data, direct imaging sonar feed and more - all alongside the ROV live video feed.



## THE DTG3 BASE PACKAGE



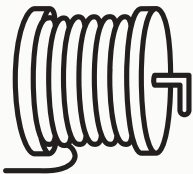
7" LCD Handheld Controller  
with 64GB SD Card



BRIDGE Software



1080p Camera  
(upgrade to 4K available)



75M (246') Tether  
(options to 500M available)



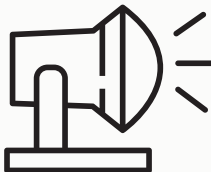
Tether Reel | Up to 200M Capacity  
(options to 700M available)



Pelican Case



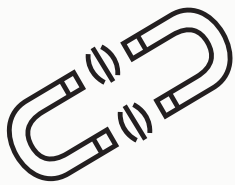
Sensors  
(Heading, Depth, Temp, Pitch, Roll, Auto  
Heading/Depth)



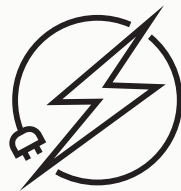
Auxiliary Floodlights



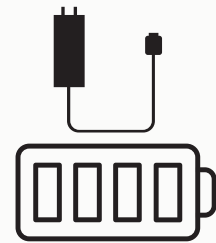
Toolless Ballast



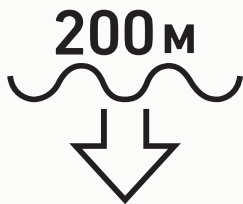
3 Magnetically Coupled Thrusters  
(Precision Thruster + 2 Main Thrusters)



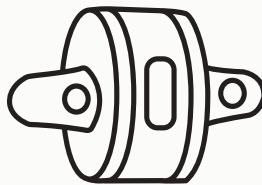
Hybrid Power



Batteries and Chargers Included



200M Depth Rating



Fully Assembled and Tested



1 Year Bronze Package Warranty

## EXTRA ADD-ONS

Imaging Sonar  
Mechanical Sonar  
USBL  
Cygnus Thickness Gauge  
NDT Tools  
Grabbers and Manipulators

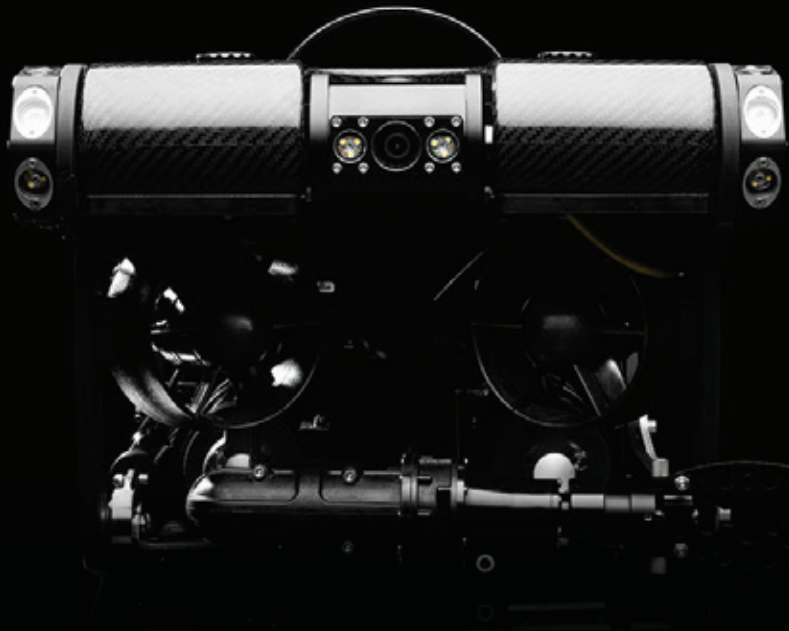
Sediment Samplers  
Water Samplers  
Additional Cameras  
Additional Lighting  
Custom Tether Lengths  
Net Patch Kit

Mort Pusher Kit  
Cutter Attachment  
Service Kits  
Operational Enhancements  
Application Based Tools

# PIVOT REMOTELY OPERATED VEHICLE [ROV]


The perfect balance between size and power.  
Providing enhanced stability, greater power,  
speed and control in a portable package.

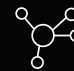






## PORTABILITY MEETS POWER

Introducing the PIVOT, Deep Trekker's most versatile ROV. Equipped with 6 strong thrusters powered by lithium batteries, the PIVOT provides users with stability, power, speed and control in a portable package.

 305m (1000ft) depth rating

 Comprehensive sensor integrations

 4K rotating camera head

 Modular for 3rd party add-ons



### Rotating tool platform

Independently revolve 97-degrees for manipulator, sonar and more.



### Field swap batteries

Quick-change batteries in the field for extended missions.



### Autonomous capabilities

Seamlessly fusing all sensor data for autonomous control.

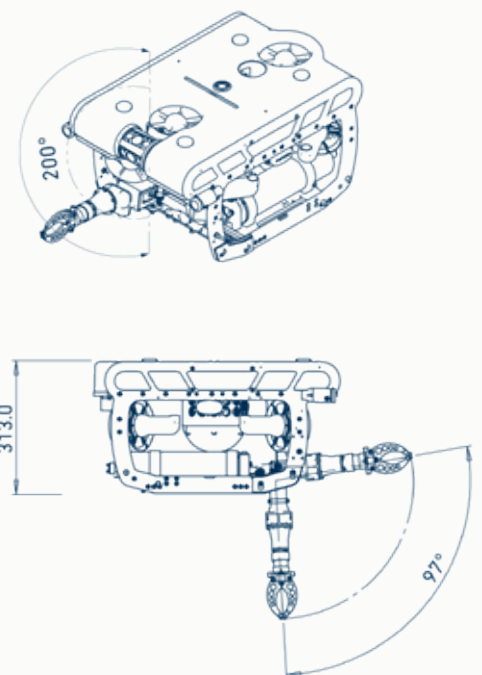
## GENERAL SPECIFICATIONS

### ROV General Specs

Width :	360 MM (14.2")
Height :	310 MM (12.2")
Length :	576 MM (22.7")
Weight (in air) :	16.8 KG (37 LB)
Body Material :	Anodized Machined Aluminum, Carbon Fiber, & Stainless Steel Buoyancy Foam
Window Material :	Sapphire & Acrylic
Depth Rating :	305 M (1000 FT)
Operating Temp :	-10°C to 50°C (14°F – 122°F)
Case:	Custom Pelican Air 1650 & 1560 Handle and Wheels
Drives/Thruster:	Magnetically Coupled/Sealed
Warranty :	1 Year – Parts and Labor (optional 2-3 yrs)

### ROV Electrical System

System Voltage :	19.6 VDC
Thruster Control :	6x Independent Control
	Infinitely Variable
	100% Reversible



Deep Trekker reserves the right to amend these specifications at any time without notice.



## OUT-OF-BOX READY

Fully assembled and tested, operators can depend on their PIVOT to work right out of the box no matter what the mission.

- Carbon fiber and aluminum durability make the PIVOT a tough and reliable vehicle. Providing years of service - saving time and money long term.
- Magnetically coupled thrusters, stainless steel components and sapphire lens cover paired with intelligent design ensures that operators can trust their vehicle to get the job done.
- With the support of the Deep Trekker team behind every vehicle, users can expect exceptional customer service.

## COMBINING FLEXIBILITY, STABILITY AND INTELLIGENT FEATURES FOR UNMATCHED FREEDOM

97-degree rotating tool positioning provides pilots with flexible imaging options and convenient tool manipulation from a stable platform - allowing for jobs to be completed quickly and conveniently. The 200-degree range of motion on the 4K camera allows users to complete inspections in a timely, straightforward manner.

- The expandable tool platform allows for numerous modular options for adaptability and customization.
- In addition to being flexible and adaptable, the PIVOT is easy to use allowing operators to be trained quickly.
- The ideal combination of stability and flexibility lets users keep their platform in the most stable position for imaging options.

## POWERED BY BRIDGE TECHNOLOGY



Simplified control



Seamless integrations



Constant communication



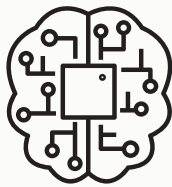
Enhanced operations

An intelligent, technology platform from Deep Trekker. An operating system designed with custom hardware and software; for control, integration, communication and enhanced operation.

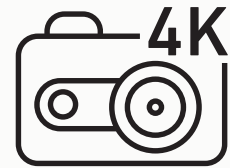
Enable the ability to fuse all sensor data into one handheld, weatherproof controller. See positional data, direct imaging sonar feed and more - all alongside the ROV live video feed.



7" LCD Handheld Controller  
with 64GB SD Card



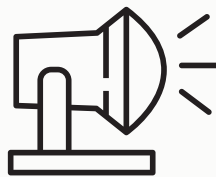
BRIDGE Software



Enhanced 4K Camera



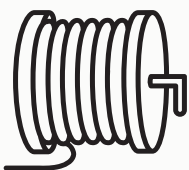
Sensors  
(Heading, Depth, Temp, Pitch, Roll, Auto  
Heading/Depth)



Auxiliary Floodlights



Toolless Ballast



100M (330') Tether  
(options to 500M available)



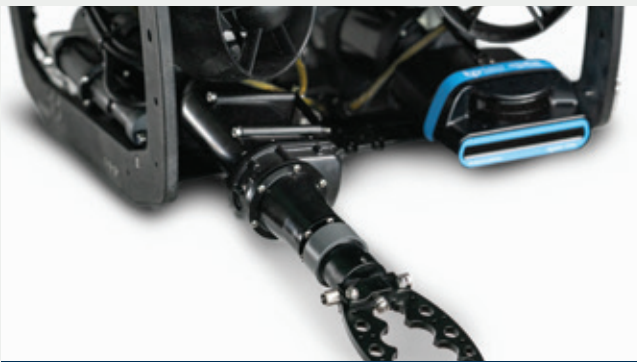
Tether Reel | Up to 200M Capacity  
(options to 500M available)



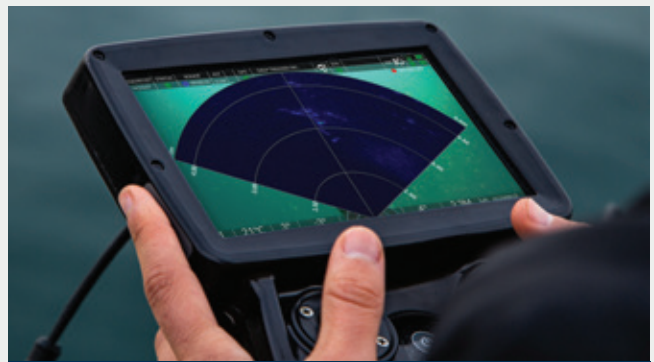
Pelican Case



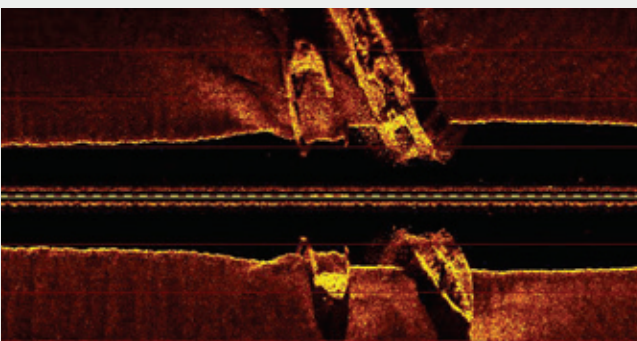
## VEHICLE COMPONENTS & OPTIONAL ADD-ONS



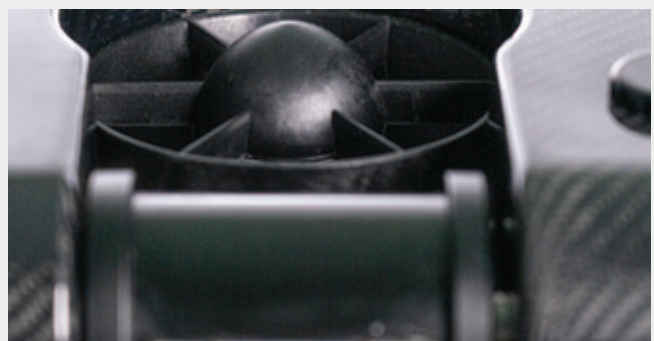
Independent Pivoting Tool Skid



Imaging Sonar



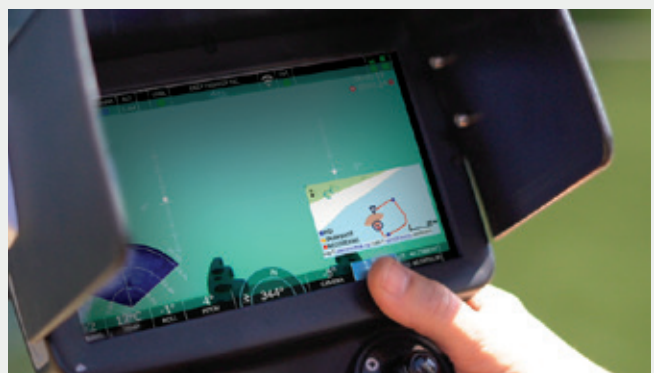
Side Scan Sonar



6-Thruster Stability



Future Autonomy



USBL Positioning

# PIVOT ROV PACKAGE COMPARISON



	PIVOT SMART	PIVOT EXPERT	PIVOT NAV
<b>4K Rotating Camera Head</b>	✓	✓	✓
<b>7" LCD Controller</b>	✓	✓	✓
<b>305M Depth Rating</b>	✓	✓	✓
<b>Tether Length</b>	100M	150M	300M
<b>Tether Reel</b>	✓	✓	✓
<b>Tool Platform</b>	-	✓	✓
<b>Spare Batteries</b>	-	✓	✓
<b>Sensor Pack</b>	✓	✓	✓
<b>Carrying Cases</b>	✓	✓	✓
<b>Microphone</b>	✓	✓	✓
<b>Lighting</b>	✓	✓	✓
<b>Additional Lighting</b>	-	✓	✓
<b>Grabber</b>	-	✓	✓
<b>Fully Assembled and Test</b>	✓	✓	✓
<b>Warranty</b>	One Year	One Year	Two Years
<b>Online Training</b>	-	✓	✓
<b>USBL Positioning</b>	-	-	✓
<b>DVL</b>	-	-	✓
<b>Field Service Kit</b>	-	-	✓

## EXTRA ADD-ONS

- Imaging Sonar
- Mechanical Sonar
- USBL
- DVL
- Side Scan
- Water Quality Sensors

- NDT Tools
- Grabbers and Manipulators
- Sediment Samplers
- Water Samplers
- Additional Cameras

- Additional Lighting
- Custom Tether Lengths
- Service Kits
- Operational Enhancements
- Application Based Tools

# REVOLUTION REMOTELY OPERATED VEHICLE [ROV]


Mission-ready remotely operated vehicle with greater payload capabilities, deeper depths, and advanced stabilization.



# JOIN THE REVOLUTION ROV

The REVOLUTION is the most intuitive and stable ROV for underwater surveys and inspections. Built tough to survive harsh underwater conditions to accomplish complex missions.

 305m (1000ft) depth rating

 Comprehensive sensor integrations

 4K camera

 Expeditionary transport case



## Revolving camera head

Change the orientation of your camera, sonar, grabber and more.



## Field swap batteries

Quick-change batteries in the field for extended missions.



## Autonomous capabilities

Seamlessly fusing all sensor data for autonomous control.

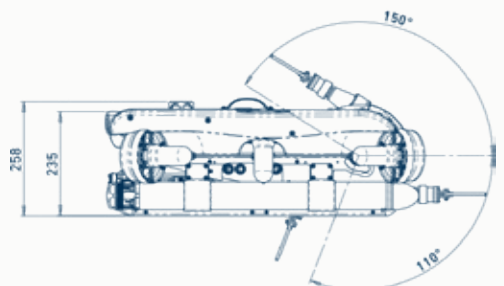
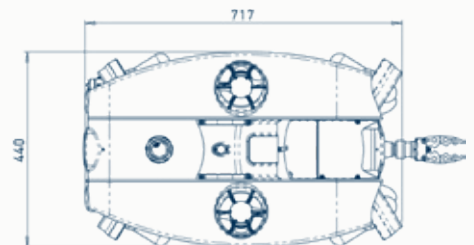
## GENERAL SPECIFICATIONS

### ROV General Specs

Width :	440 MM (17.3")
Height :	235 MM (9.3")
Length :	717 MM (28.2")
Weight (in air) :	26 KG (57 LB)
Body Material :	Anodized Machined Aluminum, Carbon Fiber, Stainless Steel, & Buoyancy Foam
Window Material :	Sapphire & Acrylic
Depth Rating :	305 M (1000 FT)
Operating Temp :	-10°C to 50°C (14°F – 122°F)
Case (optional) :	Custom Pelican Air 1650 Handle and Wheels
Drives/Thruster:	Magnetically Coupled/Sealed
Warranty :	1 Year – Parts and Labor (optional 2-3 yrs)

### ROV Electrical System

System Voltage :	22.2 VDC
Thruster Control :	6x Independent Control
	Infinitely Variable
	100% Reversible



Deep Trekker reserves the right to amend these specifications at any time without notice.



## REVOLUTIONARY REVOLVING CAMERA HEAD

The defining feature is the 260-degree revolving head at the front of the vehicle. In the center of this head is the enhanced 4K camera that you see the view from on your controller, as well as powerful LED floodlights and a laser scaler.

Adjust the angle of your camera, lights, laser scaler, imaging sonar and grabber to ensure optimal position for your application, such as sweeping an area with the imaging sonar in a search mission or looking above at the hull of a ship or to locate targets on the seafloor.

## ADVANCED STABILITY AND AUTONOMOUS CAPABILITIES

The ROV is propelled by six powerful thrusters, two of which are vertically mounted for precise vertical movements and depth holding, four of the thrusters are mounted horizontally and in a vectored configuration to allow for lateral movements.

The REVOLUTION NAV package has advanced autonomous stabilization and position tracking features, allowing operators the ability to station hold against currents and pilot their vehicle precisely and accurately through varying water conditions.

Post-dive, take your recorded GPX data alongside your video and share them with your customer or team.



## POWERED BY BRIDGE TECHNOLOGY



Simplified control



Seamless integrations



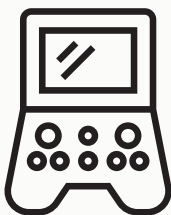
Constant communication



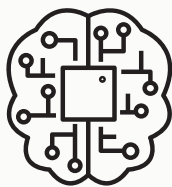
Enhanced operations

An intelligent, technology platform from Deep Trekker. An operating system designed with custom hardware and software; for control, integration, communication and enhanced operation.

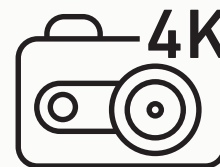
Enable the ability to fuse all sensor data into one handheld, weatherproof controller. See positional data, direct imaging sonar feed and more - all alongside the ROV live video feed.



7" LCD Handheld Controller  
with 64GB SD Card



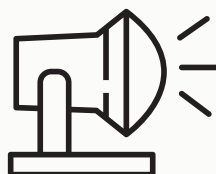
BRIDGE Software



Enhanced 4K Camera



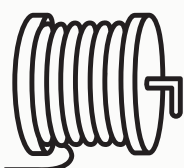
Sensors  
(Heading, Depth, Temp, Pitch, Roll, Auto  
Heading/Depth)



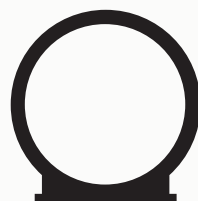
Auxiliary Floodlights



Toolless Ballast



300M (985') Tether  
(options to 500M available)



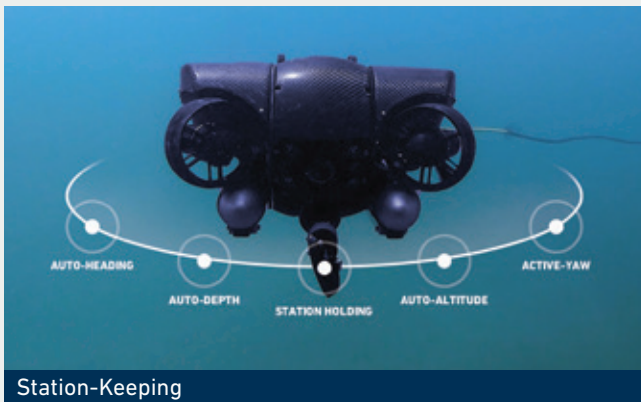
Tether Reel  
(options to 500M available)



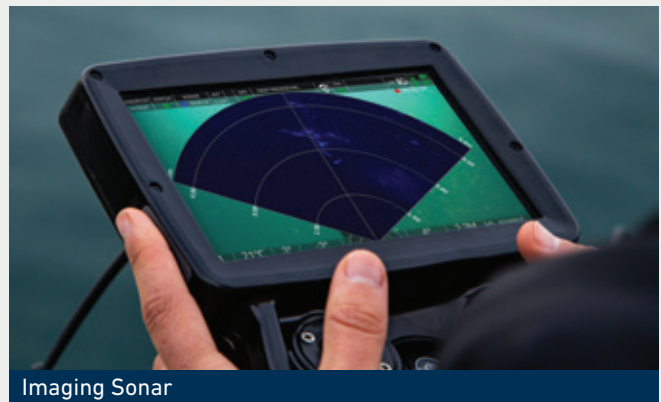
Pelican Case



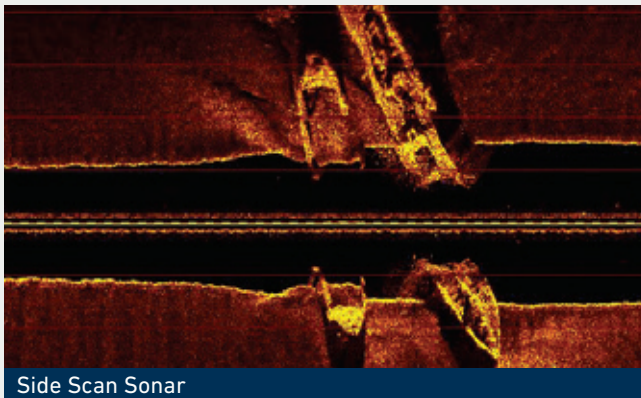
## VEHICLE COMPONENTS & OPTIONAL ADD-ONS



Station-Keeping



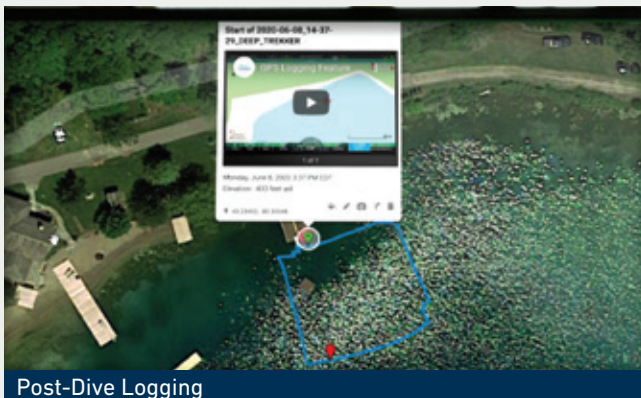
Imaging Sonar



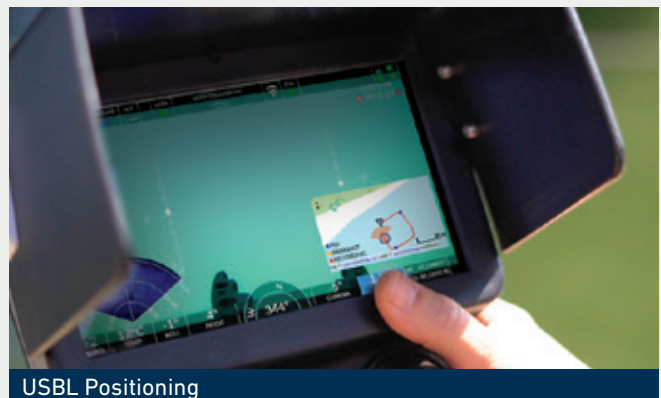
Side Scan Sonar



Sensor Fusion



Post-Dive Logging



USBL Positioning

# REVOLUTION ROV PACKAGE COMPARISON



## REVOLUTION ROV

## REVOLUTION NAV

Rotating Camera Head	✓	✓
7" LCD Controller	✓	✓
Enhanced 4K Camera	✓	✓
300M Depth Rating	✓	✓
300M Tether	✓	✓
Tether Reel	✓	✓
Grabber Arm	✓	✓
Laser Scaler	✓	✓
Sensor Pack	✓	✓
Microphone	✓	✓
Lighting	✓	✓
2 Sets of Batteries	✓	✓
2 Carrying Cases	✓	✓
Fully Assembled and Tested	✓	✓
Warranty	One Year	Two Years
Online Training	✓	✓
USBL Positioning	-	✓
DVL	-	✓
Field Service Kit	-	✓

### EXTRA ADD-ONS

Imaging Sonar  
Mechanical Sonar  
USBL  
DVL  
Side Scan  
Water Quality Sensors

NDT Tools  
Grabbers and Manipulators  
Sediment Samplers  
Water Samplers  
Additional Cameras  
Additional Lighting

Custom Tether Lengths  
Cases  
Service Kits  
Operational Enhancements  
Application Based Tools

## DT300 SERIES PIPE CRAWLERS

Fully submersible, battery-operated pipe crawlers, built for municipal pipe inspections from 6" (150mm) to 36" (900mm) in diameter.



# PORTABLE AND COMPACT CCTV

Inspect small and large diameter pipes off the same controller and reel with the DT320 and DT340 crawlers in one package. Built for municipal pipe inspections as small as 6" in diameter and centering up to a 36" pipe, these pipe crawlers are fully submersible and battery operated; removing the need for a CCTV Truck, generator or onsite power supply.



50m (164ft) depth rating



No topside power or boxes required



Steerable



Expeditionary transport cases



## Software integrations

Compatible with most sewer inspection software.



## Pan & Tilt HD Camera

Easily view your entire pipe system with this pan, tilt and zoom camera and sapphire glass lens.



## Wheel and track options

Interchange various wheel and track options to inspect different pipe materials.

# ONE CONTROLLER, TWO CRAWLERS

Pipe inspections made easy. Operate the DT320 and the DT340 with its splash-proof controller. The easy to use control system reduces the learning curve for beginner operators.

Record your own video inspections or integrate with reporting software using the crawler's standard video out port.



Splash-proof handheld controller



Record video inspections with voice over via DVR



# DURABLE CONSTRUCTION

Designed to support tough jobs, both the DT320 Mini and the DT340 are constructed with anodized die-cast aluminum, stainless steel and a sapphire glass camera lens. They are built to withstand the daily grind of sewer and stormwater pipe inspections.



Sapphire glass camera lens cover



Cast aluminum and stainless steel frame



Clean sheet engineering



Skid-steer

The full DT300 Package comes complete in 3 compact wheeled Pelican cases. Deployable without the need for generators or onsite power supply. The magnetically coupled wheel drivers requires zero maintenance; no need to replace or grease.

## DT300 PACKAGE | FULLY LOADED

This fully loaded kit gives you all the options available from Deep Trekker for pipe inspections. Take on any material with the various wheel kits and track sets included and enhanced tether management with the powered reel.



Magnetically Coupled Drive



DT340 with Tracks



400M Power Reel



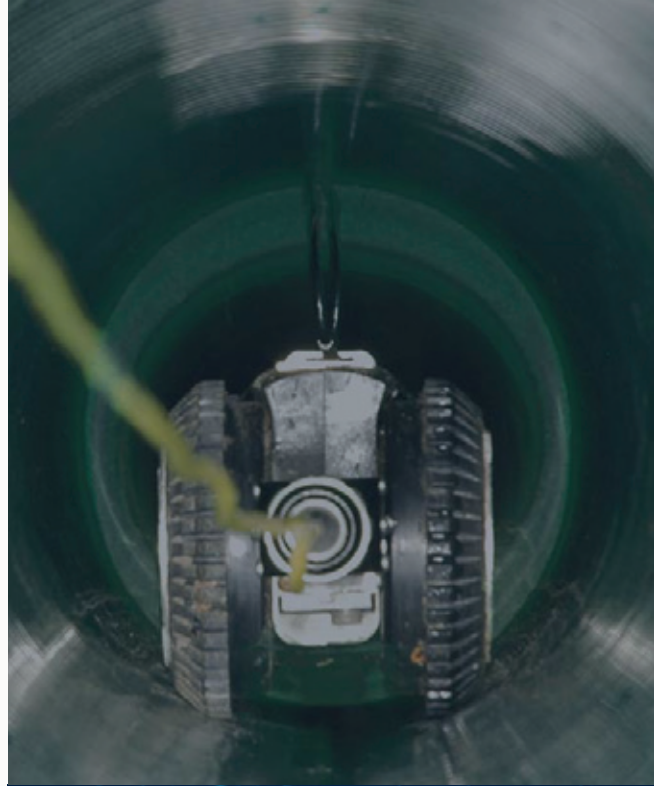
Pant Tilt Camera



One Controller



DT320



## SCALABLE DESIGN AND ASSORTED WHEEL OPTIONS

The DT320 and DT340 can be equipped with various wheel and track options, allowing you to ensure proper inspection in various pipe diameters and materials.



Interchange between rubber and carbide wheels in various sizes



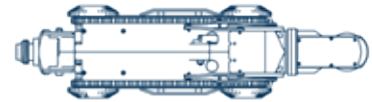
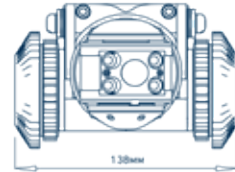
Install self-cleaning tracks on the DT340 over the wheels for multi-terrain capabilities

# GENERAL SPECIFICATIONS

## DT320

### Crawler General Specs

Width :	123 MM (5")
Height :	87 MM (4")
Length :	440 MM - 630 MM (17" - 25")
Weight (in air) :	11 KG (25 LB) - 16 KG (35 LB)
Material :	Stainless Steel Aluminum, High Strength Sapphire
Depth Rating :	50 M (164 FT)
Viewing Capability:	Pipelines 150mm (6") Diameter to 300mm (12") Center
Camera :	700 TVL 0.0001 lux
Operating Temp :	-5°C to 40°C (23°F - 104°F)
Speed:	12m / minute
Cases :	1 Custom Pelican Air Handle and Wheels
Warranty :	1 Year - Parts and Labor (optional 2-3 yrs)



### Crawler Electrical System

System Voltage :	19.2 VDC
Sensors :	Incline, Roll, Leak, Camera Pan/Tilt

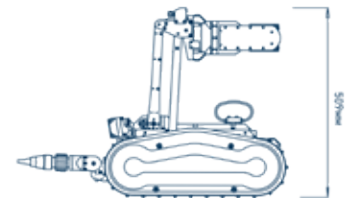
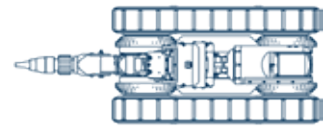
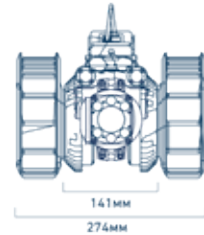
Deep Trekker reserves the right to amend these specifications at any time without notice.

# GENERAL SPECIFICATIONS

## DT340

### Crawler General Specs

Width :	141 MM (5.55")
Height :	151 MM (5.96")
Length :	710 MM (27.95")
Weight (in air) :	16.6 KG (36.59 LB)
Material :	Stainless Steel Aluminum, High Strength Sapphire
Depth Rating :	50 M (164 FT)
Viewing Capability:	Pipelines 200mm (8") Diameter to 900mm (36") Center
Camera:	700 TVL 1.0 lux, 10x Optical Zoom, 12x Digital Zoom
Operating Temp :	-5°C to 40°C (23°F - 104°F)
Speed:	12m / minute
Cases :	2 Custom Pelican Air 1637 Handle and Wheels
Warranty :	1 Year - Parts and Labor (optional 2-3 yrs)



### Crawler Electrical System

System Voltage :	19.2 VDC
Sensors :	Incline, Roll, Leak, Camera Pan/Tilt

Deep Trekker reserves the right to amend these specifications at any time without notice.

# DT640 UTILITY CRAWLER

Fully submersible, battery operated, versatile magnetic or rubber wheeled utility robot.



# DT640 MAG

## PATENTED MAGNETIC WHEELS

The DT640 MAG provides a safe and efficient alternative to ship hull and steel structure inspections. Earth magnets allow the utility crawler to move in any direction on ferrous material.



50m (164ft)  
depth rating



Low maintenance



Portable



Modular design



### 360° turn radius

Get an instant visual on hard to reach and impossible to access environments.



### Advanced sonar integrations

Identify targets of interest or obstructions within minutes, even in turbid or murky water.



### Magnetic wheels

Rare earth magnets allow for travel in any direction on any ferrous metal surface.

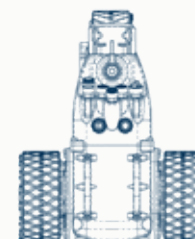
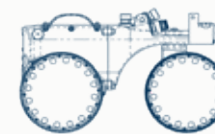
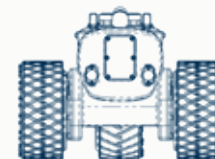
## GENERAL SPECIFICATIONS

### Crawler General Specs

Width :	406 MM (13")
Height :	228 MM (9")
Length :	710 MM (27.95")
Weight (in air) :	16.6 KG (36.59 LB)
Material :	Stainless Steel, Aluminum, High Strength Acrylic
Depth Rating :	50 M (164 FT)
Wheels :	Patented Magnetic 2WD
Camera :	700 TVL 0.0001 lux
Operating Temp :	-5°C to 40°C (23°F – 104°F)
Speed :	12m / minute
Turn Radius :	0 mm (0")
Warranty :	1 Year – Parts and Labor (optional 2-3 yrs)

### Crawler Electrical System

System Voltage :	19.2 VDC
Sensors :	Incline, Roll, Leak, Camera Pan/Tilt



Deep Trekker reserves the right to amend these specifications at any time without notice.

## RAPID RESPONSE VISUAL INSPECTION

The DT640 MAG provides a safe and efficient alternative to ship hull and steel structure inspections. Its onboard HD camera and live-video feed provides operators with instant visual inspections in hard to reach and often impossible to access environments.



HD camera and live-video feed



Stainless steel, aluminum, high strength acrylic frame



Modular design



Extreme durability



## CYGNES THICKNESS GAUGE KIT

This ultrasonic thickness probe presses on the surface, taking an accurate measurement, even through marine growth or coatings. This is a great tool for corrosion surveys for UWILDs on FPSOs or Vessels, as well as for steel tanks and pipes and other surfaces.



Cygnus Thickness Gauge



Easy controls



Pressure Washer

## PRESSURE WASHER ADD-ON

Want to use your magnetic crawler to clean off debris and marine growth? Attach the pressure washer kit to the DT640 MAG for cleaning and clearing areas from hulls, pipes and cargo holds, allowing for proper inspections and longevity.



## ADVANCED SONAR INTEGRATION



0.1m to 120m range



Single and Dual frequency options available

Hull inspections made easy. Even in murky or turbid water, get the full picture of under a vessel's hull with an imaging sonar attachment for the DT640 MAG.


Identify targets of interest or obstructions attached to the hull within minutes.


# DT640 VAC


## PORTABLE VACUUM ROBOT

Built for cleaning sediment and sludge from the bottoms of reservoirs and tanks, the DT640 VAC is an easier, safer and more cost-effective alternative to draining assets or utilizing divers for cleaning.

 50m (164ft) depth rating

 Low maintenance

 Portable

 Extremely durable



### 360° turn radius

Get an instant visual on hard to reach and impossible to access environments.



### Vacuum head options

Various vacuum head options available from 14" single intake to 24" dual intake.



### Low maintenance

Compact easy-to-use design for frequent and safe inspections and cleaning.

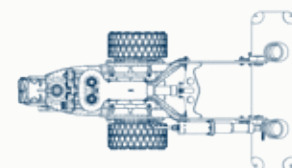
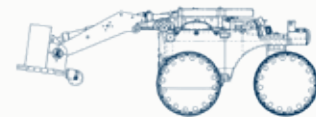
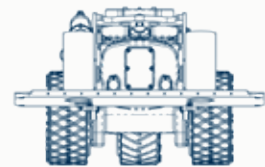
## GENERAL SPECIFICATIONS

### Crawler General Specs

Width :	406 mm (13")
Height :	228 mm (9")
Length :	710 mm (27.95")
Weight (in air) :	15 kg (34 LB)
Material :	Stainless Steel, Aluminum, High Strength Acrylic
Depth Rating :	50 m (164 FT)
Wheels :	Rubber 2WD
Camera :	700 TVL 0.0001 lux
Operating Temp :	-5°C to 40°C (23°F – 104°F)
Speed :	12m / minute
Turn Radius :	0 mm (0")
Warranty :	1 Year – Parts and Labor (optional 2-3 yrs)

### Crawler Electrical System

System Voltage :	19.2 VDC
Sensors :	Incline, Roll, Leak, Camera Pan/Tilt



Deep Trekker reserves the right to amend these specifications at any time without notice.

## KEEP SERVICES ONLINE

Conduct tank cleaning with the DT640 VAC without interrupting service. Avoid the dangers of having divers in the water and pump sediment from water tanks using the Deep Trekker robotic vacuum system.

## NO NEED TO DEWATER TANKS

Draining tanks can be costly and time-consuming with services often offline for weeks at a time. The DT640 VAC is completely submersible and can be decontaminated prior to entering water tanks.



HD Camera and Lights



Dual Intake



Hose connector



Pan/tilt/zoom camera

# DT640 MAX | TOUGH JOBS WITH EASE

Built for cleaning sediment and sludge from the bottoms of reservoirs and tanks, the DT640 MAX is an easier, safer and more cost-effective alternative to draining assets or utilizing divers for cleaning. The big brother of the DT640 Utility Crawler, the DT640 MAX covers more ground and moves twice as fast to tackle the biggest of jobs. Perfect for reservoirs, the DT640 MAX readily handles sediment and mud.

Users can upgrade their current DT640 into the DT640 MAX in minimal time.



36" vacuum head



Tilt vacuum head 40 degrees



Pan/tilt/zoom elevated camera



650 lumen LED floodlights

## EASY TO USE CONTROLLER



Weatherproof handheld controller



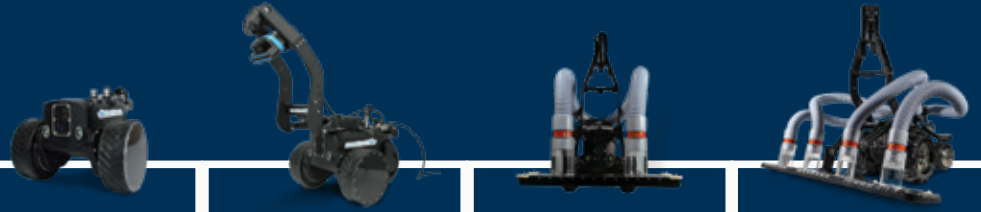
Record video inspections with voice over via DVR

Tank inspections and cleaning made easy. Operate the DT640 with its splash-proof controller. The easy to use control system reduces the learning curve for beginner operators.

Record your own video inspections and provide operators with instant visuals.



# DT640 UTILITY CRAWLER PACKAGE COMPARISON



**DT640 STD**      **DT640 MAG**      **DT640 VAC**      **DT640 MAX**

<b>5.6" LCD Controller</b>	✓	✓	✓	✓
<b>Forward Facing Body Camera</b>	✓	✓	✓	✓
<b>PT Elevated Camera</b> pan (360°) and tilt (280°)	-	-	✓	✓
<b>50M Depth Rating</b>	✓	✓	✓	✓
<b>Tether Length</b>	75M	75M	75M	75M
<b>Tether Reel</b>	✓	✓	✓	✓
<b>Sensor Pack</b> incline, roll, leak, camera pan/tilt	✓	✓	✓	✓
<b>Magnetic Wheels</b>	-	✓	-	-
<b>Rubber Wheels</b>	✓	-	✓	✓
<b>LED Lights</b>	✓	✓	✓	✓
<b>Software Integration</b>	✓	✓	✓	✓
<b>18" Dual 2" Intake Vacuum</b>	-	-	✓	-
<b>36" Quad 2" Intake Vacuum</b>	-	-	-	✓
<b>Electric Arch Kit</b>	-	-	✓	✓
<b>Dual Connection Kit</b>	-	-	✓	-
<b>Quad Connection Kit</b>	-	-	-	✓
<b>Carrying Cases</b>	✓	✓	✓	✓
<b>Fully Assembled and Tested</b>	✓	✓	✓	✓
<b>Warranty</b>	One Year	One Year	One Year	One Year

## EXTRA ADD-ONS

Pressure Washer Kit  
Dozer Kit  
Cygnus Gauge Kit

14" Single 1.5" Intake Vacuum  
24" Dual 2" Intake Vacuum  
DVR (Digital Video Recorder)

Service Kits  
External Floodlights  
Sonar

# A BRIEF HISTORY

## INNOVATIVE ROBOTIC SOLUTIONS

### Development



Patents awarded to Deep Trekker Inc.

2010

2011

First international sales of DTG2



### Expansion



Introduction to Ultrasonic Thickness Gauge attachment

2014

2017

Introduction to DT640 Magnetic Crawler



### Product Expansion



Introduction to BRIDGE technology for DTG3 and REVOLUTION

2019

2020

Introduction to REVOLUTION NAV package



Introduction to PIVOT ROV

2021



# PIPE TREKKER

BY  DEEP TREKKER

The world's first and only fully battery-operated, portable pipe crawler to move quickly and easily to even the most remote manholes.

Pipe Trekker delivers easy-to-use, reliable and robust pipe crawlers which can be either completely one-man portable or truck-mounted.

## A-200 PIPE CRAWLER

Your tough, reliable ally for pipe inspections in 8" (200mm) diameters and larger.

# Portable and Compact CCTV Inspections

Equip your pickup, vac truck, or even ATV with a pipe crawler. Give your team a flexible option to get eyes in the pipe. The battery-powered A-200 equipped with a high definition PTZ (pan, tilt, zoom) camera is the easiest to use and most portable pipe crawler on the planet.

With the possibilities of advanced sensor integrations, such as sonar and lasers, our adaptable design enables true flexibility without compromising performance.



Fully Submersible



Battery Operated



Magnetically Coupled Drives



High Definition Camera



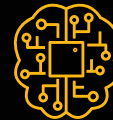
Hybrid Power Options



Durable

# Advanced Integrations

Need to make a simple report? Pipe Trekker's onboard software records video and photos onboard the weatherproof handheld controller quickly and easily. For inspections that require more data, integrate with various software providers such as WinCan for coded reports, GIS mapping, and AI-enabled defect detection.



Contact us to learn more about advanced sensor integration possibilities.

# 5-Star Customer Service

We know the most important part of owning trenchless technology is having it up and running in the field. Pipe Trekker focuses on designing crawlers to handle the rough environments of sewer and storm water pipes, but if an issue does happen, we are here to support you with quick resolutions.

If making a repair in-field is required to keep you on the job site, we will guide you through it. Our team has over a decade of experience making long-lasting robotics. Don't believe us? See some of our reviews.

The Trekker is great for sewer and storm inspections. The customer service level at Pipe Trekker is a class of its own. We could not ask for better customer service, experience and support.

Abbas Hamadeh, FJM Contracting



FJM Utility Locating Ltd.

I would highly recommend their crawlers! The City of Hot Springs Arkansas Stormwater Division purchased the unit in 2017 and have inspected thousands of feet of stormwater sewer pipe with no issues. The battery operated unit provides plenty of power to inspect pipe for hours and is very mobile with no need for a generator or van to transport the unit. You won't regret the decision to purchase this unit.

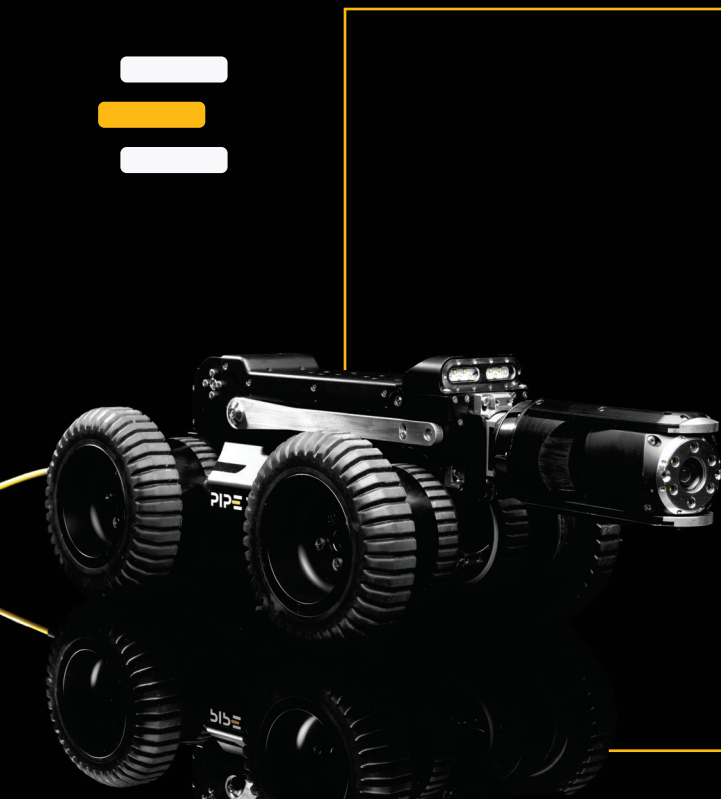
Dan Carder, City of Hot Springs



Every time we have called, the customer support has been top notch. I have never seen the customer support like this company. The absolute best. If they don't answer, they call back in just a few minutes. I would easily purchase from this company again, just for the customer support alone.

Raymond Stover, PWS





## What's Included



PTZ HD Camera



Weatherproof Controller



Motorized Arm



3 Rubber Wheel Kits



512Hz Sonde



Floodlights & Laser Scaler



200m Tether



2 Pelican Cases

## Optional Add Ons



Automatic Reel



Up to 310m Tether



Rear Camera



Pneumatic Tires



Tablet Style Controller

Contact us for additional add on capabilities.

# Technical Specifications

## Dimensions (Smallest and Largest Configuration)

Width: 6" (150mm) - 12.2" (310mm)  
 Height: 5.5" (140mm) - 20.6" (523mm)  
 Length: 28.2" (716mm) - 29.5" (749mm)  
 Weight (in air): Up to 64.6 lbs (29.2 kg)  
 Materials: Stainless Steel, Machined Aluminum, Sapphire Lens Cover  
 Depth Rating: 50m (164') Water Depth  
 Minimum Diameter: 8" (200mm)  
 Maximum Diameter (w/ Camera Head Centered): 36" (900mm)  
 Operating Temperature: -5°C to 40°C (23°F to 104°F)  
 Speed: Up to 12m/min  
 Warranty: 1 Year - Parts and Labor (optional 2-3 years)  
 Sensors: Incline, Roll, Leak, Pan/Tilt, Distance Counter  
 Transmitter: Sonde  
 Deployment: Lift brackets on side, lift points at front and back

## Crawler Electrical System Specifications

System Voltage: 19.2 VDC, LiFe 6000 mAh  
 Battery Run Time: Up to 5 Hours  
 Hybrid Power Option Available (operate continuously)  
 Hybrid Power: 75 VDC on Tether via AC input through Automatic Reel  
 Drives: Magnetically Coupled, 2 x DC Gear Motors with Gear Train  
 Steering: Skid Style  
 Pull Force: 130 lbs (580 N)  
 2-3 Spare Ethernet Ports

## Tether Specifications

Max Length Available: 310m (1,100')  
 Diameter: 6.5mm  
 Break Strength: 1600 lbs (725 kg)  
 Conductors: 1 Twisted Pair, Copper  
 Termination: Epoxy, with Strain Relief  
 Jacket Material: Polyurethane

## Camera Specifications

Resolution: 1080p / 8MP  
 Pan: 360 Degrees Continuous  
 Tilt: +/- 140 Degrees (280 Degrees Total)  
 Zoom: 10x Optical, 120x Digital  
 Focus: Auto or Manual  
 Exposure: Auto or Manual  
 Lights: 900 Lumens; Auxiliary: 1500 Lumens

## Controller Specifications

Weatherproof, Splashproof  
 Display: 7" LCD  
 Joysticks: Hall Effect  
 Outputs: HDMI, Ethernet, USB, SD  
 Battery Life: Up to 5 Hours / Charge during operation for continuous  
 Software: Bridge, WinCan or other software optional integrations

## Head office

155 Washburn Dr  
 Kitchener, ON  
 Canada  
 A200\_ENG\_0122\_01

## Chile Office

Ruta 5 Sur KM 1025 Bodega 5  
 (Megacentro1)  
 Puerto Montt, Los Lagos, Chile

**PIPE TREKKER**

[pipetrekker.com](http://pipetrekker.com)  
[sales@pipetrekker.com](mailto:sales@pipetrekker.com)

## UNDERWATER REMOTELY OPERATED VEHICLES & ROBOTS

With over a decade of proven performance, Canadian company, Deep Trekker, is one of the largest underwater ROV manufacturers in the world – delivering high quality, robust and portable underwater robots to industries ranging from aquaculture to municipal contracting, military and defense, search and rescue, shipping, infrastructure and more.

### Head office

155 Washburn Dr  
Kitchener, ON  
Canada

### Chile Office

Ruta 5 Sur KM 1025 Bodega 5  
(Megacentro1)  
Puerto Montt, Los Lagos, Chile



[deeptrekker.com](http://deeptrekker.com)  
[sales@deeptrekker.com](mailto:sales@deeptrekker.com)