



Humanihut®
RIGID REDEPLOYABLE INFRASTRUCTURE

HUMANIHUT FIELD INFRASTRUCTURE SYSTEM



Why Humanihut?

The Humanihut Field Infrastructure System (HFIS) was designed as a solution to a humanitarian crisis through the delivery of an entire temporary infrastructure system which incorporates accommodation, clean drinking water, sewerage management and power generation. Humanihut now supplies temporary infrastructure to the global humanitarian, defence, emergency management and construction industries.



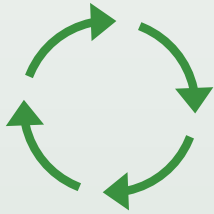
Scalable



Worldwide
deployment



Power, water & waste
fittings included



Re-deployable



Minimal
environmental
impact



20+ year lifespan



Climate
controlled



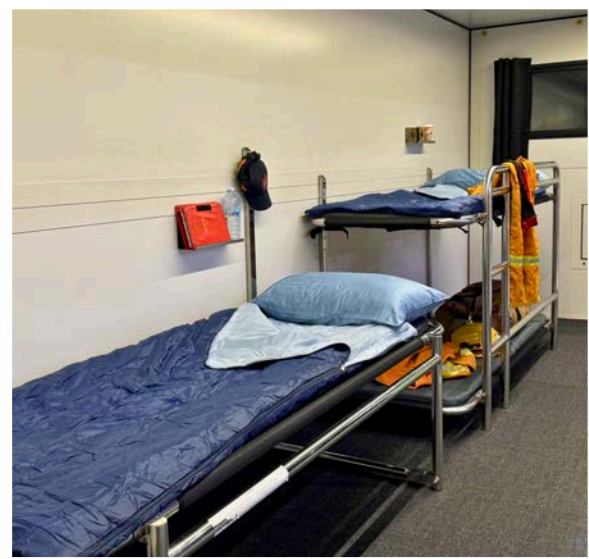
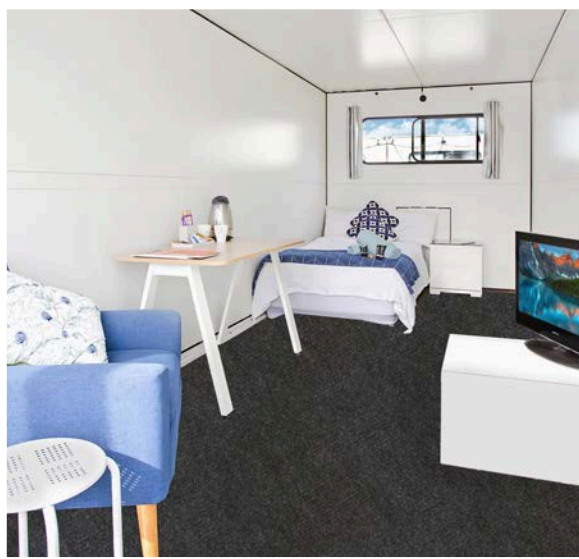
The System.

Capable of multiple deployments over its 20+ year lifespan, and with all components, accessories and necessary utilities integrated for rapid deployment and ease of establishment, the Humanihut Field Infrastructure System can connect to local mains water, power, and waste-water infrastructure or run independently if services are not available. The Humanihut Field Infrastructure System is modular and scalable and has the agility and adaptability to be configured to suit any client requirement.



The Hut.

The Hut is manufactured from insulated, rigid, lightweight steel materials. Corrosion resistant and flame retardant structural roof and wall panels with a UV stabilised Colorbond coating, ensures a 20+ year lifespan. With a choice of floor coverings, each Hut comes with shelving for personal effects, reverse-cycle air conditioning, thermal insulation, and double glazed windows as standard. Doors and windows can be configured to requirement including access doors and ramps.



Internal dimensions
5.7 x 2.2 x 2.2 m

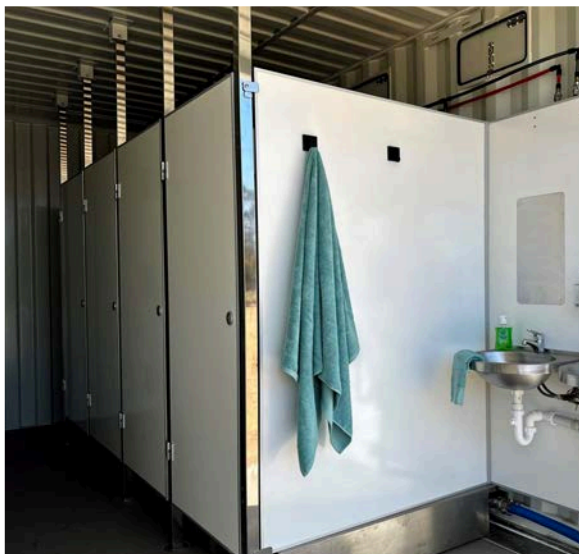
Floor area
12.45 m²

Tare weight
1,100 kg

The Bathroom.

The Bathroom is the customised shipping container which transports the Huts to site. Once unloaded, the container transforms to a 4 cubical bathroom facility complete with shower, hand-washing, and toilet facilities.

With stainless steel toilet bowls, washbasins, shower recesses and drains, The Bathroom is assembled using “click & connect” cam-lock fittings allowing for setup in under 30 minutes. Regulatory-compliant Accessible Bathroom units can be provided upon request.



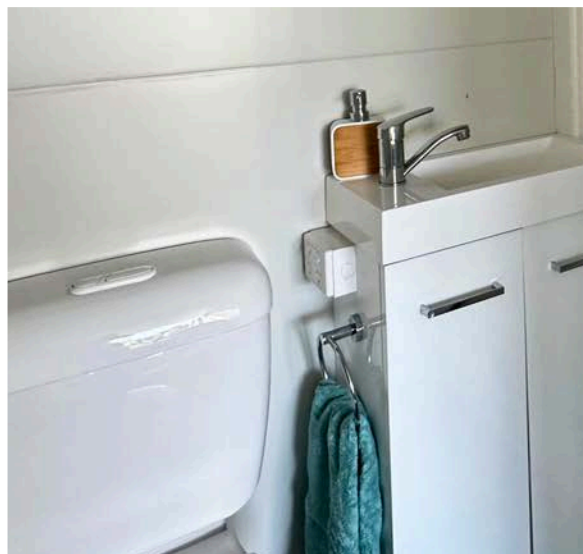
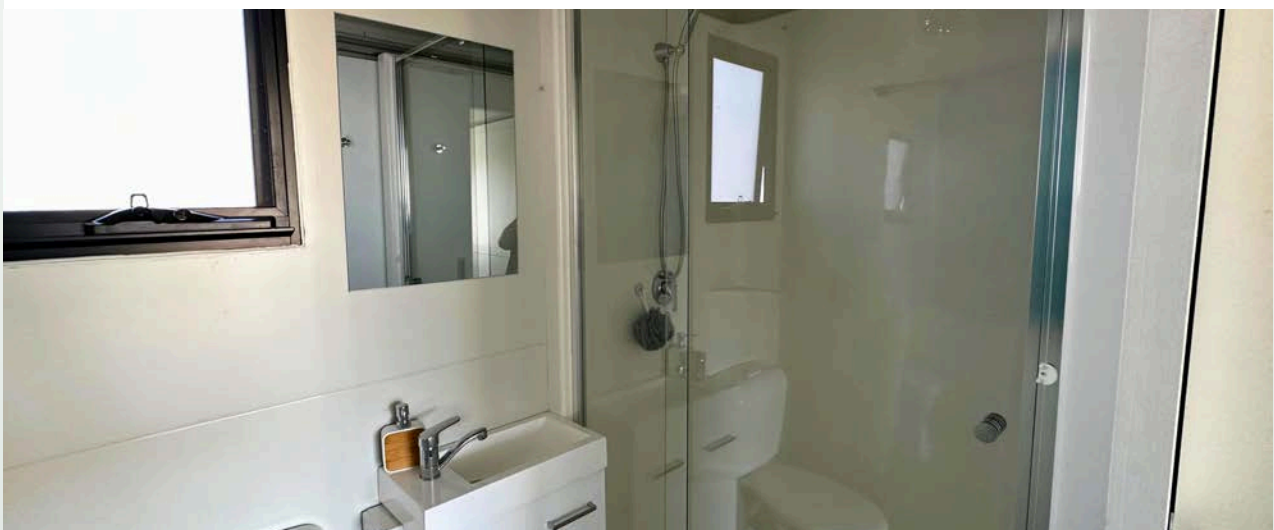
Internal dimensions
5.9 x 2.4 x 2.8 m

Floor area
14.2 m²

Container
20'

The Personal Bathroom.

The Personal Bathroom is a customised module designed to integrate with the Humanihut Field Infrastructure System. Connected to established Huts, The Personal Bathroom provides convenient and private amenities, and additional comfort to residents. With a built in macerator pump for minimal environmental impact, and an auto shut exhaust fan with integrated insect guard, The Personal Bathroom is an optional upgrade to the traditional shared bathrooms.



Internal dimensions
1.27 x 2.14 x 2.3 m

Floor area
2.72 m²

The Barwon.

Uniquely designed and engineered, The Barwon is a scalable and customisable, open plan space providing a light and generous footprint, and incorporating Humanihut's rapid deployability, integrated utilities, and climate controlled comfort. Suitable as a recreation, dining, meeting, or office space, The Barwon can be scaled to suit, fitted with a choice of floor coverings, and tailored door and window configurations including multiple entry/exit points, access doors and ramps.



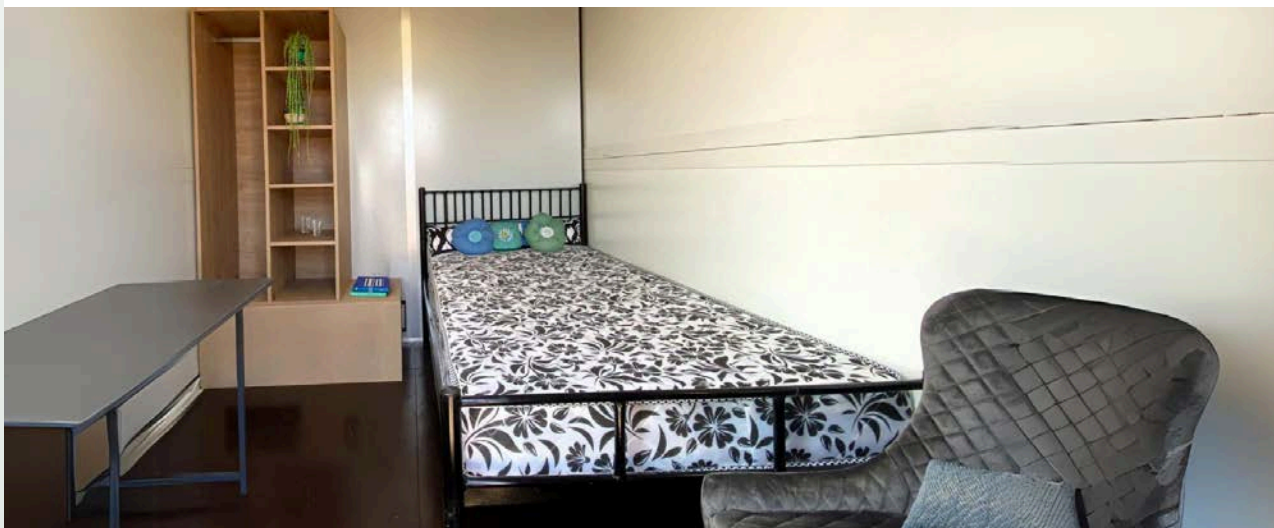
Internal dimensions per module
5.7 x 2.2 x 2.2 m

Floor area per module
12.45 m²

The Kooyong.

The Kooyong is a “resting place” offering private and peaceful singular or double (bunk-bed) accommodation for its residents, and value and efficiency of space to the project budget. By utilising the traditional Humanihut single module and incorporating a dividing wall, two autonomous living areas are created each with independent rooftop mounted reverse-cycle air conditioning and entrances.

An established Kooyong camp creates a home away from home community aiding worker welfare and wellbeing.



Internal dimensions per module
2.85 x 2.2 x 2.2 m

Floor area per module
6m²

The Basecamp.

The Basecamp is an innovative infrastructure solution designed for maximum efficiency and flexibility. Whether on-grid or off-grid, and starting with the Basecamp 8, this system is infinitely scalable and rapidly deployable to meet diverse requirements.

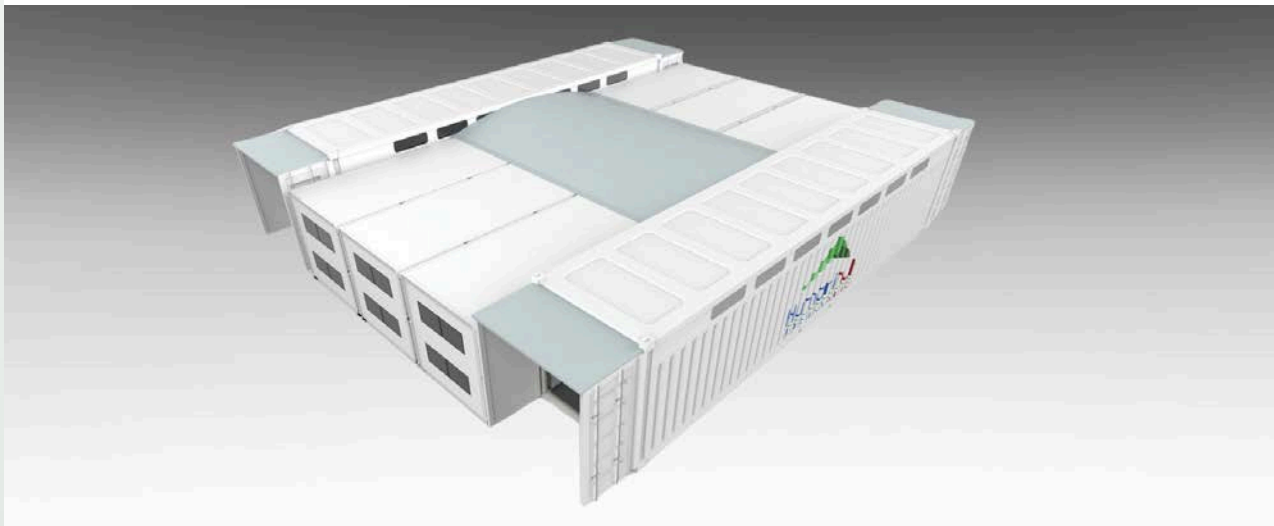
The Basecamp 32 is delivered in seven 20-foot containers. It provides 32 individual Huts and six bathrooms, offering a comprehensive living solution that can be quickly expanded or adapted as needed.



Dimensions 46 x 16.5 m	Total footprint 759 m2	Container 7 x 20'	Population Up to 256
---------------------------	---------------------------	----------------------	-------------------------

The Haven 6.

The Haven is a versatile and supportive recovery solution featuring six Huts that can be configured to address the unique needs of families and communities rebuilding after a natural disaster, as well as remote workers seeking integrated and flexible accommodation. Its adaptable design allows for the inclusion of living areas, dining and kitchen spaces, bedrooms, and essential household amenities, ensuring a comfortable and functional environment for occupants. Whether for recovery or remote work, The Haven provides a crucial space for resilience and rebuilding.



Dimensions 13 x 12 m	Total area 156 m ²	Container 2 x 20'	Population Up to 42
-------------------------	----------------------------------	----------------------	------------------------

The Cooper.

The Cooper is a compact and agile, logistically efficient and rapidly re-deployable shelter system providing self sufficiency and autonomy for its users. Able to withstand the harshest of climatic conditions, The Cooper consists of three climate controlled Huts offering UV protection, thermal insulation, and double-glazed windows.

The Cooper comes with its own life support system skid consisting of:

- power generator
- electrical and plumbing systems
- hut furniture
- macerator pump for sewerage
- two freshwater tanks, two wastewater tanks, and pumps

all contained on, and secured to the skid.



Dimensions 12 x 8 m	Total area 96 m ²	Container 20'	Population Up to 12
------------------------	---------------------------------	------------------	------------------------

The Mallee.

Taking its name from the iconic Australian eucalypt trees which grow as a collection of tightly connected branches, The Mallee offers the proven capabilities of the existing Humanihut Field Infrastructure System, combining them in a variety of configurations to provide a unique, versatile solution. The Mallee provides agility to deploy numerous configurations based on the size and need of an event or requirement.



Container
8 x 20'

2 x Life Support
Skids



The Mallee configurations.

Option	The Mallee can deploy in each of the following configurations
1	1 x Basecamp 32 and 2 x Containers including Life Support Skids
2	2 x Basecamp 16
3	4 x Basecamp 8
4	2 x The Cooper
5	1 x Basecamp 16 and 2 x Basecamp 8
6	1 x Basecamp 16 and 2 x The Cooper
7	1 x Basecamp 16, 2 x The Cooper and 1 x Basecamp 8
8	3 x Basecamp 8 and 2 x The Cooper



Configuration	Description (per configuration)
Basecamp 32	32 Huts / 6 Bathrooms
Basecamp 16	16 Huts / 3 Bathrooms
Basecamp 8	8 Huts / 2 Bathrooms
The Cooper	3 Huts / 2 Showers / 2 Toilets / 1 Life Support Skid

Rental solutions.

Humanihut provides a variety of rental solutions for the Humanihut Field Infrastructure System, allowing for customised fit-outs and configurations to meet specific needs. Whether for temporary accommodation, office spaces, or other uses, our flexible options ensure that each setup is tailored to maximise functionality and comfort. This adaptability makes it easy to create the ideal environment for any situation.



Fixed-Term Rental Agreement:

The ideal solution when multiple deployments will be required over a period of several years. This could include seasonal work, construction, mining, and defence deployments and activities.

Periodic Rental Agreement:

Suitable for occasional, short-term deployments such as events and festivals, and short-term accommodation supplementation.

Emergency Response Rental Agreement:

An immediate, one-off deployment in response to a major large-scale event.

Turn-key solutions.

Humanihut provides a comprehensive turnkey site management solution for established sites, temporary accommodation facilities (with or without supplied infrastructure), offices, and onsite warehousing. Our skilled and experienced team is dedicated to ensuring daily operations run smoothly and professionally. We prioritise the safety, comfort, and well-being of occupants and staff, allowing you to focus on your core activities while we handle the logistics and management of your site.



Humanihut offers customised site management solutions including:

- Dedicated 24/7 Onsite Managers
- Full catering including specific and cultural dietary requirements
- Linen service
- Interpreting services
- Medical/health support
- Customised onsite activities
- Perimeter fencing
- Maintenance management
- On-site security



Humanihut[®]
RIGID REDEPLOYABLE INFRASTRUCTURE



**DESIGN
FOR EXPORT
AWARDS**



**Veteran
Employment Supporter**



**GOOD
DESIGN
AWARD[®]
WINNER**

