

# SAME-NEUROID RETREAT 2024 PRESENTATION

Paris Brain Institute (ICM) - PICNIC-Lab  
Annahita Sarré & Pr. Laurent Cohen





## MY BACKGROUND

Bachelor's degrees in Biology and Linguistics

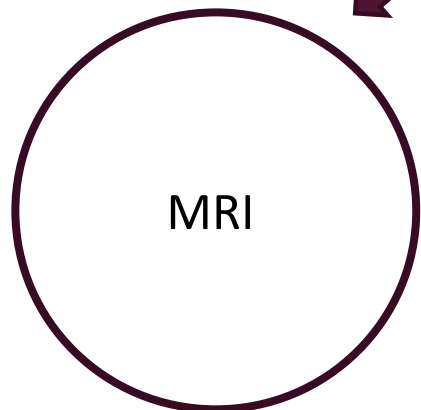
Master's degree in Cognitive Science (Cogmaster), major in Cognitive Neuroscience

Currently a 4th year PhD candidate, working at the PICNIC-Lab of the ICM with Pr. Laurent Cohen

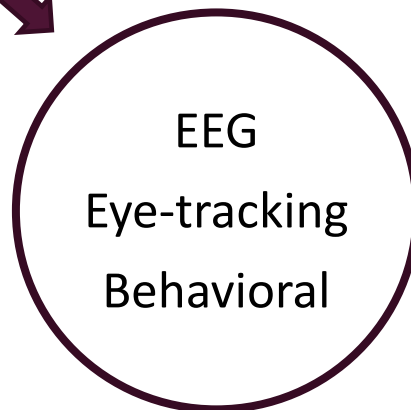
# MY PHD PROJECT

Cued Speech (CS) = system to disambiguate lipreading for Deaf people  
Improves general linguistic abilities in Deaf people (~20 studies)...  
... But only a few studies on the mechanisms of CS

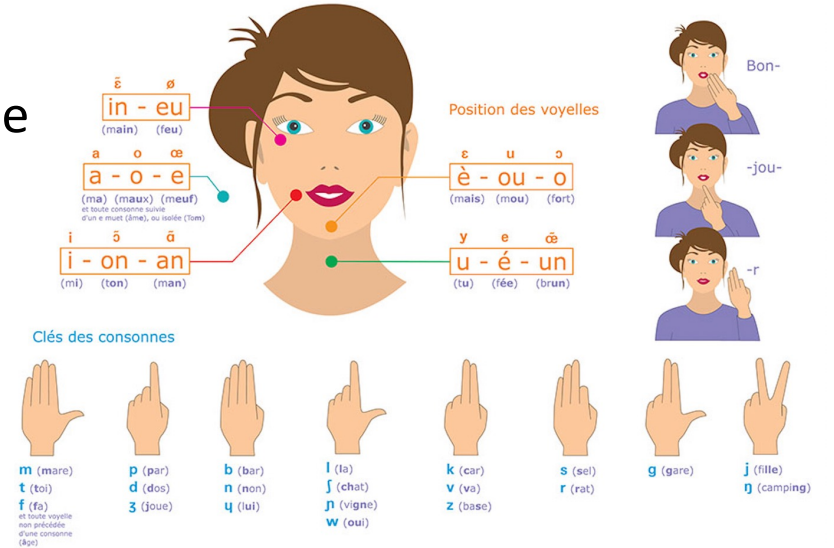
➡ Explore the mechanisms involved in CS perception



Study 1



Study 2



Crédit : ALPC

**Population** 123 healthy volunteers recruited for the two studies



# WHAT'S NEXT?

Continue in academia

Looking for a post-doc in...

