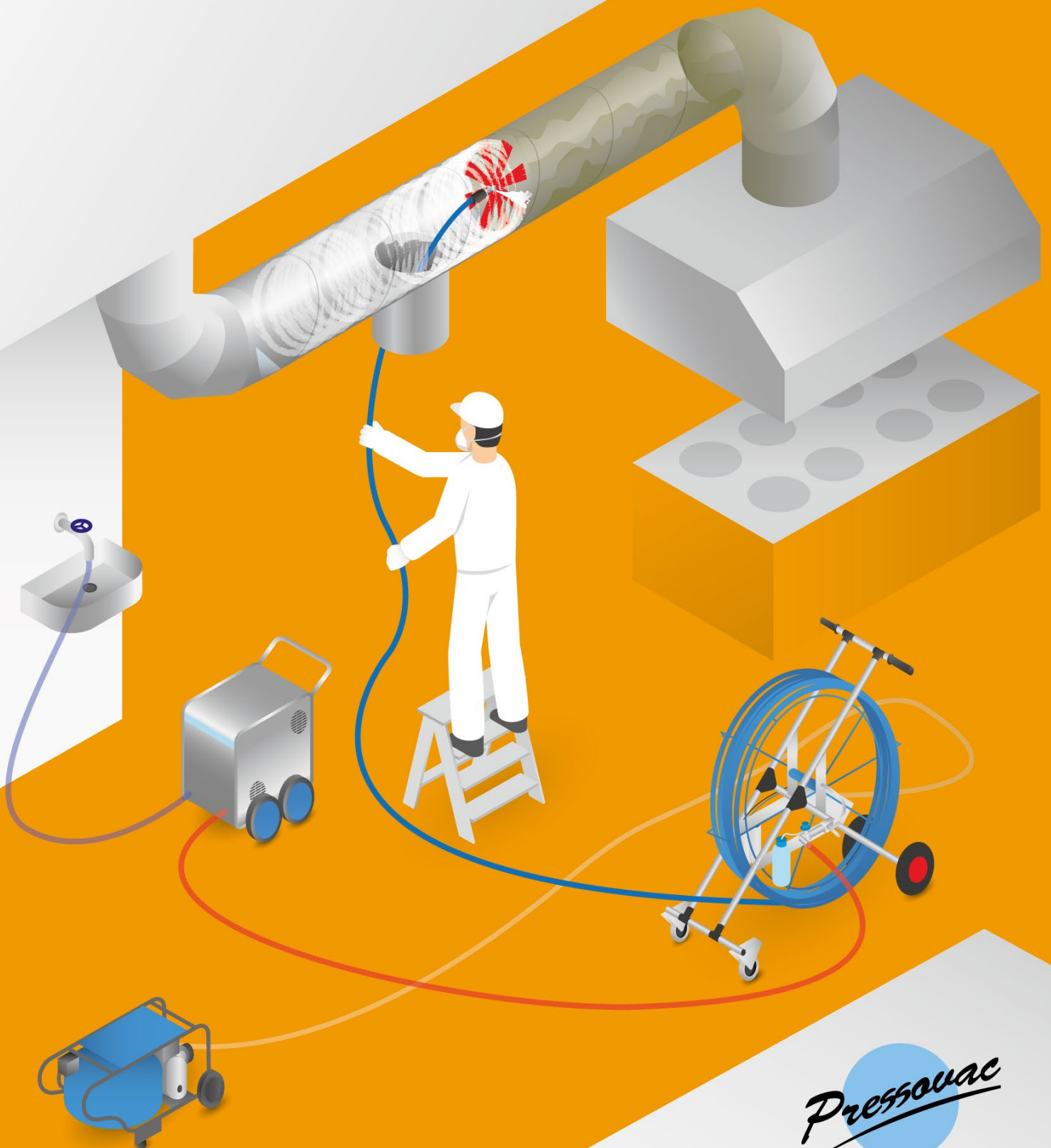


PROFESSIONAL GREASE DUCT CLEANING EQUIPMENT



Pressovac

The company

Pressovac Oy is a manufacturer of professional duct cleaning equipment. The company was founded in 1991 and is located in Muurame, central Finland. With almost 30 years of experience, we are a dynamic, internationally trusted enterprise that excels in pioneering technological development in the field of air and grease duct cleaning equipment. The quality of our products is tested in more than 30 countries worldwide and is acknowledged by the expanding number of our international customers.



Pressovac Oy
FINLAND
www.pressovac.fi

Contents

Is cleaning grease ducts necessary?	4
What do you need to clean grease ducts?	5
Duct washing equipment	6-13
Accessories for duct washing machines	14-17
Inspection cameras and accessories	18-21
Sets for cleaning grease ducts	22-23



Is cleaning grease ducts necessary?

Grease duct cleaning is a process of removing grease that accumulates over the time inside the hoods, filters, fans, vents and all associated horizontal and vertical ductwork of exhaust systems of commercial kitchens. Removing grease from the ducts is laborious process that requires competence of a duct cleaning professional and specific equipment. But why to bother at all?



Fire hazard

The exhaust systems of industrial kitchens accumulate grease constantly. Once the buildup within the duct is sufficient, it can act as a source of fuel, carrying the fire from the stove top further in to the exhaust system. Grease duct fires spread rapidly, cause significant damage to the people and businesses, and often put the structure of the whole building at risk. It is the owner's responsibility to keep kitchen exhaust system clean and reduce the risk of a fire hazard. Should the fire occur due to the lack of duct cleaning, the insurance company may render insurance policies invalid.

Legal compliance

Aiming to eliminate the most common cause of the fire in commercial kitchens, the regular cleaning of the exhaust systems has become mandatory. The legislation outlining common standards and regulating the practices of kitchen exhaust cleaning is being enforced in countries around the world. Consequently, grease duct cleaning business is becoming a rapidly growing branch of duct cleaning industry.

Energy savings

Grease buildup in exhaust ducts hinder the airflow and affect the air quality in the building, breeding bacteria and mold, and creating bad odors. Accumulated grease forces the exhaust system into excessive consumption of energy. It causes mechanical failure of exhaustion devices and often shortens their lifetime.



WASHING EQUIPMENT
to spread foaming chemical
degreaser, brush and rinse the
inner walls of the grease duct



INSPECTION EQUIPMENT
to check the state of the grease
duct before and after cleaning



Duct Washing Equipment



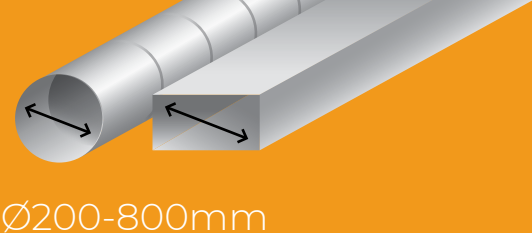
Pressovac offers a wide range of 3-in-1 multipurpose grease duct washing devices that incorporate the most important functions in grease duct cleaning process - foaming, brushing and rinsing – all in one machine.

Our duct washing machines are equipped with retractable multitube hose which integrates a high-pressure hose line for foaming and rinsing operations. They have been specially developed to work with chemicals and any high-pressure washer of your own preference.

With our versatile equipment your investment is maximized. We have powerful pneumatic duct washers that are excellent for cleaning round and rectangular grease ducts in large industrial kitchens, while our electric duct washing machines are ideal for duct washing in smaller exhaust systems. For cleaning exhaust hoods and working down the exhaust ducts from the rooftop, our compact drill operated Combi-shafts are handy. Multiple optional add-on mechanisms and functionalities allow to customize each of our duct washing devices to meet your specific cleaning needs in each grease duct cleaning project.

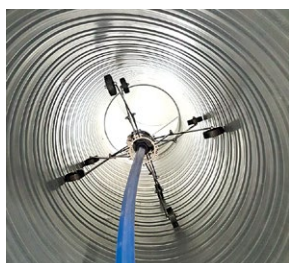
Pneumatic duct washing machine

PDW-25 / PDW-30 / PDW-40



Ø200-800mm

This multipurpose duct washing device with powerful pneumatic motor and integrated retractable multitube hose is the best choice for brushing, foaming and rinsing medium to large rectangular and round grease ducts up to 800mm in diameter. Multiple optional add-on mechanisms and functionalities allow you to customize this device to meet your specific needs.



Pneumatic brush centralizer

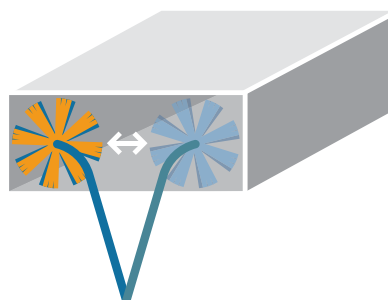
Brush Ø200-800mm



- 3 in 1: Foaming, brushing and rinsing functions
- Quick connect nozzles
- Hose withstands foam and water jet up to +90°C and 150 bar
- Long-lasting, powerful pneumatic motor
- Integrated motor lubrication system
- Stainless steel frame
- Pre-installed hoses and connector for disinfection
- Pre-installed hoses and control switch for pneumatic brush centralizer
- Lightweight, easy to manoeuvre and transport

Automatic brush direction change

Pressovac patented automatic brush direction change function allows brush to automatically move from side to side within adjustable timeframe. This is the optimal solution for proper cleaning of large rectangular ducts





Technical Specifications	PDW-25	PDW-30	PDW-40
Multitube hose length	25m	30m	40m
Weight	36kg	39kg	50kg
Dimensions (LxHxW)	94x99x66cm	94x99x66cm	105x110x66cm
Frame structure	stainless steel		
Motor type	pneumatic motor		
Compressed air consumption	300 l/min, 7 to 10 Bar		
Motor lubrication system	integrated		
Brush rotation speed	600 rpm		
Brush rotation direction	left/right		
Compatible brush type	S- or L-brushes (only L-brushes with T-adaptor)		
Foaming and rinsing hose system	integrated (up to +90°C and 150 bar)		
Chemical doser + chemical bottle	included		
Pneumatic brush centralizer	optional		
Wireless remote control	optional		
Automatic brush rotation direction change	optional		
T-adaptor set	optional		
Accessories included	3 nozzles + 1 hose 10m 210bar/150C		

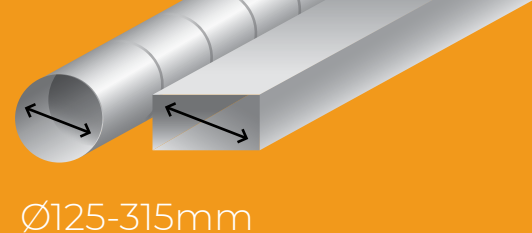
Recommended accessories:

(see Accessories on pp.14-17)

- K-370 portable air compressor
- HW-45T Hot water high pressure washer
- S- and L-brushes
- Foam tank
- High pressure foaming nozzle
- Disinfection nozzle



Electric duct washing machine EDW-15 /EDW-15S



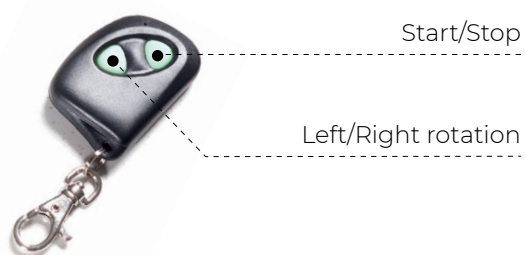
This compact multipurpose duct washing device with powerful electric motor and integrated retractable multitube hose is an excellent choice for brushing, foaming and rinsing small grease ducts up to 315mm in diameter.



- 3 in 1: foaming, brushing and rinsing functions
- Hose withstands foam or water jet up to +90°C and 150 bar
- Long-lasting, powerful EC motor
- Automatic shaft safety stop system
- Integrated wireless remote control
- Available in stainless steel frame
- Compact and easily operated by one person
- Lightweight, easy to manoeuvre and transport

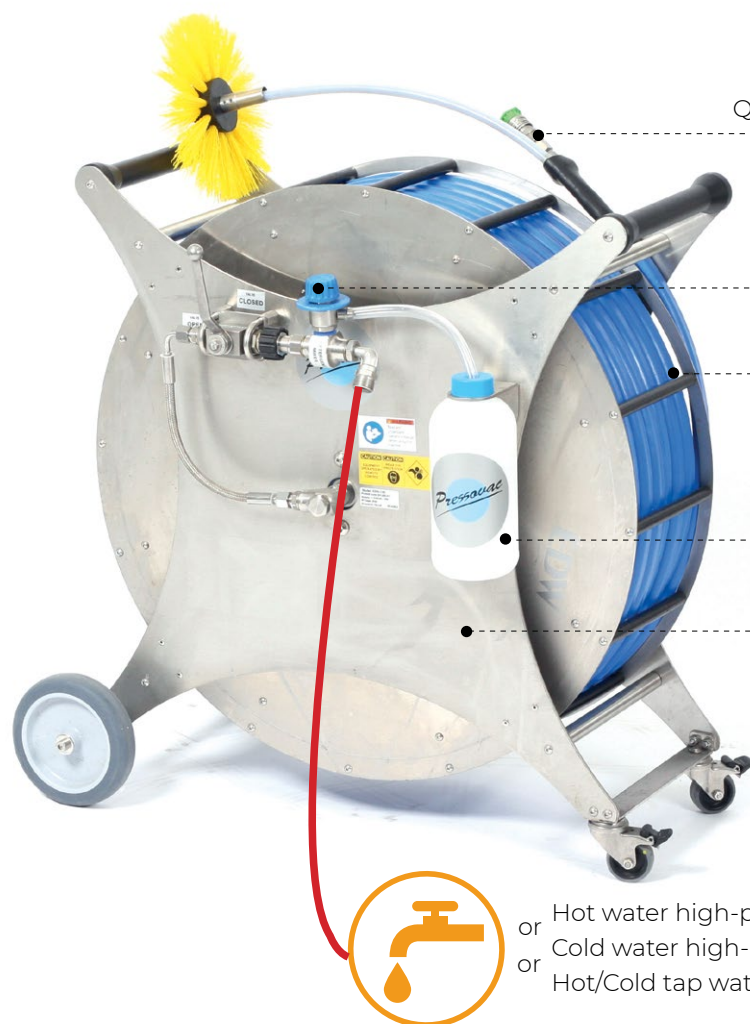


Wireless remote control



Nozzles





Quick connect nozzles high pressure foaming nozzle

Chemical doser

Multitube hose 15m

Bottle for foaming chemical

Aluminum or stainless steel frame



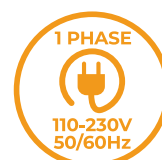
or Hot water high-pressure washer HW-45T
or Cold water high-pressure washer
or Hot/Cold tap water

Technical Features	EDW-15	EDW-15S
Multitube hose length	15	15
Dimensions (LxHxW)	70x70x46cm	70x70x46cm
Frame structure	aluminum	stainless steel
Weight	36kg	49kg
Motor type	EC motor	
Power supply	1 phase, 110-230V, 50/60Hz	
Safety stop system	integrated	
Shaft core type	flexible	
Brush rotation direction	left/right	
Brush rotation speed	up to 1100 rpm	
Compatible brush type	C-brush	
Foaming and rinsing hose system	integrated (up to +90°C and 150 bar)	
Chemical doser + bottle	included	
Wireless remote control	included	
Accessories included	3 nozzles + 1 hose 10m 210bar/150C	

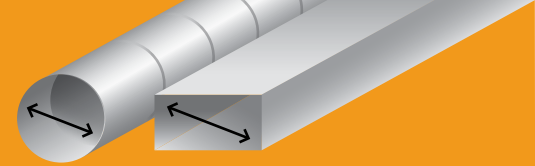
Recommended accessories:

(see Accessories on pp.14-17)

- C-brushes
- Foam tank
- High pressure foaming nozzle
- HW-45T Hot water high pressure washer



Drill powered washing shaft CS-3 / CS-5 / CS-8



Ø125-315mm

Combi-shaft (CS) is a duct washing tool that combines a flexible shaft for brushing and a high-pressure hose for foaming and rinsing. Available in multiple lengths, our Combi-shaft is recommended for washing short grease ducts between 125 and 315mm in diameter and is also a great tool for cleaning grease ducts from the rooftop.



Requires:



to rotate the brush



to generate the foam and inject it through the Combi-shaft's high-pressure hose



to inject the water through the Combi-shaft's high-pressure hose for rinsing

- 2 in 1: Brushing and rinsing functions
- Hose withstands foam or water jet up to +90°C and 150 bar
- Can be used in areas without electricity
- Suitable to use in very confined areas
- Simple and low cost tool
- Ultra light and easy to carry



Technical Specifications	CS-3	CS-5	CS-8
Multitube hose length	3m	5m	8m
Weight	3kg	4kg	6kg
Shaft core type	flexible		
Brush rotation direction	left/right		
Compatible brush type	C-brushes*		
Foaming and rinsing hose system	high-pressure hose integrated (up to +90°C and 150 bar)		
Compatible nozzle type	quick connect foaming and rinsing nozzles*		
Foaming source	foam tank*		
Power source	drill**		

Recommended accessories:

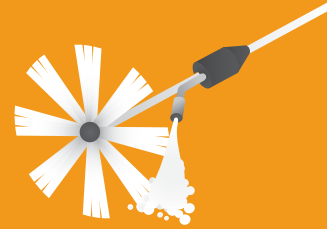
(see Accessories on pp.14-17)

- C-brushes ● HW-45T Hot water high pressure washer
- Foaming and rinsing nozzles ● Foam tank

*sold separately

** not included





Accessories for duct washing machines

Brushes

Pressovac offers a large selection of high quality brushes of different forms, sizes, and bristle materials.

The brushes should be selected according to brushing equipment, duct size, amount and structure of the grease build-up in the duct. Brushes with hard bristles are appropriate for foaming operation. When the duct has large amount of thick grease residue, extra hard bristles are recommended. In cases when the grease is strongly solidified, we recommend a moderate use of brushes with carbide or stainless steel bristles to help the chemical solution to penetrate the grease layer.



Brush type	S-brush	L-brush	C-brush
Compatible machines	PDW-25 / PDW-30 PDW-40	PDW-25 / PDW-30 PDW-40	EDW-15/EDW-15S Combi-shaft
Compatible ducts	rectangular and round ducts with multiple bends Ø200-800mm	rectangular and round ducts Ø150-500mm	rectangular and round ducts Ø125-315mm
Brushing segment	40mm	150mm	20mm
Bristle types	Hard / Extra Hard	Hard / Extra Hard	Hard / Extra Hard
	Carbide / Stainless Steel	Carbide / Stainless Steel	Carbide / Stainless Steel
Brush size (mm)	Ø200	Ø200	Ø125
	Ø250	Ø250	Ø160
	Ø250	Ø250	Ø200
	Ø400	Ø400	Ø250
	Ø500	Ø500	Ø315
	Ø630		
	Ø800		
Brush sets	7pcs, Ø200-800mm	5pcs, Ø200-500mm	5pcs, Ø125-315mm



Grease plates

Grease plates with 5x1m extension rods for removing grease from grease ducts.

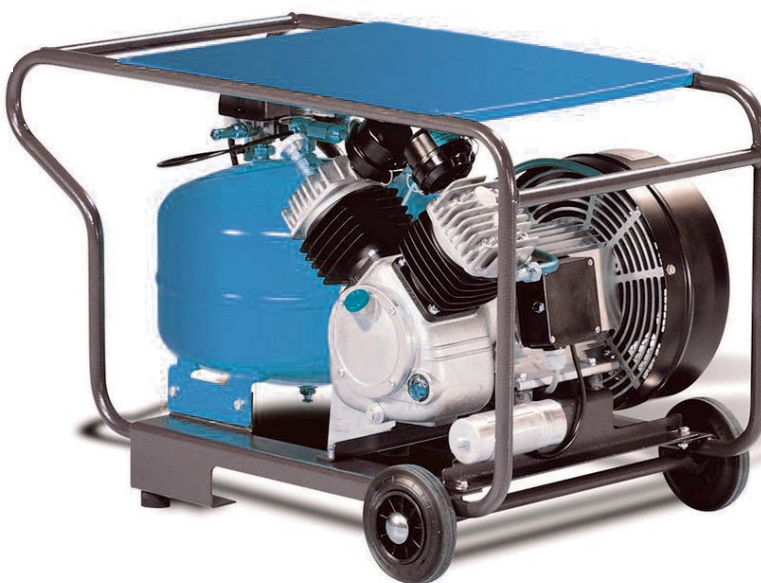


Carrying bag for shafts

Long-lasting, heavy duty carrying bag for shafts and brushing accessories.

Air compressor K-370 for pneumatic brushing machines

Durable, high efficiency compressor to power pneumatic duct washing machines PDW.



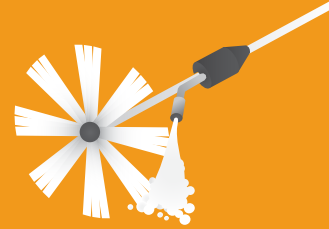
Technical Specifications

K-370

Air output	370l/min
Maximum pressure	10 bar
Pressure tank	30L
Engine power	2,2kW
Power supply	1 phase, 230V, 50Hz, 10A
Noise level	66dB
Dimensions (LxHxW)	87x59x56cm
Weight	86kg

- High air output
- Solid frame
- 30L pressure tank included
- Optimal for lengthy cleaning operations
- Compact, easy to manoeuvre and transport





Accessories for duct washing machines

Foam tank

Foamer with a 24L stainless steel pressurizable tank to create and spread the foam via high-pressure hose integrated in PDW/EDW/CS.



Foaming Agent X1

Strong alkaline and high foaming agent ideal for foam-washing grease ducts and stainless steel surfaces.



Foaming nozzle

High quality high pressure foaming nozzles built with 1/4" male quick connect. To be used for foaming in PDW, EDW and CS when using high-pressure washer



Rinsing nozzles

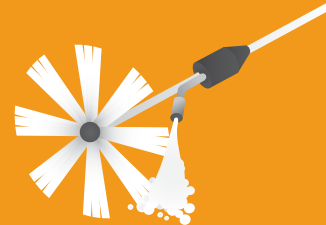
Rinsing nozzles built with 1/4" male quick connect nipples and available with multiple spray angles. To be used in PDW, EDW and CS.



Nozzle	Spray angle	Spray heads
green	25°	1
white	40°	1
T-shape	65°	2

Accessories for duct washing machines

HW-45T HotWasher



HW-45T is a high pressure electric boiler with 45L internal water tank. With a maximum pressure of 140 bar and heat exchange of +45°C, this is the ideal high-pressure boiler to generate hot water for the rinsing phase. Can be used in enclosed areas as a source of pressurized hot water.



- stainless steel patented boilers
- Continuous water heating at constant temperature
- 45 liters internal water tank and direct connection to water supply
- Pressure up to 150 bar
- Automatic shutoff technology "Total stop"
- Stainless steel frame and panels

Technical Specifications	HW-45T
Maximum pressure	140 bar
Flow rate	5,5L/min
Heat exchange	+45°C
Maximum temperature	+90°C
Power	16,5kW
Power supply	3 phase, 400V, 24A, 50Hz
Water tank	45L
Frame structure	stainless steel
Dimension (LxHxW)	95x80x61cm
Weight	76kg
Accessories included	10 mt hose - spray gun - lance - nozzle - quick connect screw type couplers - stainless steel injector







Inspection equipment

Pressovac offers a range of compact professional inspection cameras. These handy tools raise client awareness of the necessity to clean the ducts and are essential to record and present the cleaning results. For the cleaning professionals, they also help to estimate the complexity, scope and costs of the cleaning operation.

These compact high definition cameras with rechargeable batteries are excellent for inspecting vertical and horizontal ducts. Thanks to the extra small camera head and push-rod system, they can enter ducts through small openings and easily pass multiple 90° bends. More advanced models have also Pan & tilt function integrated which allows camera head to rotate 360° and bend 180° from left to right for all-round inspection of the duct.

Inspection cameras and accessories

VIS-200 / VIS-250 / VIS-350



VIS inspection cameras are an excellent choice for inspecting vertical and horizontal ducts. Thanks to their compact and safely housed waterproof heads, these cameras can access and inspect ducts through small openings and easily pass several tight 90° bends. These cameras produce wide angle high-definition image on bright TFT LCD color monitor and are powered by a rechargeable battery.



VIS-200

Ø26mm forward
facing camera head

- Compact and user-friendly
- Can inspect vertical and horizontal ducts
- Accesses ducts through small opening
- Cristal clear screen
- Light-sensitive camera heads
- Integrated wireless location transmitter
- Long operating time
- Dust safe and waterproof
- Video footage and photos (VIS-250/VIS-350)
- Pan & tilt camera head (VIS-350)
- Safe and robust plastic case
- Lightweight, easy to carry

VIS-350



Ø40mm Pan & tilt camera head



Technical Specifications	VIS-200	VIS-250	VIS-350
Push-rod	20m	20 or 30m	30m
Monitor	7" TFT color	7" TFT color	7" TFT color
Camera head	Ø26mm forward facing	Ø26mm forward facing	Ø40mm pan & tilt
Recording function	no	yes	yes
Memory	-	2GB SD card included	4GB SD card included
Interface	-	mini USB port	mini USB port
Digital meter counter	included	included	included
Operating time	120min per battery	120min per battery	120min per battery
Rechargeable batteries	1 included	1 included	2 included
Battery charger	included	included	included
Heavy duty carrying case	included	included	included
Dimensions (LxHxW)	51x17x43cm	51x17x43cm	51x17x43cm
Weight	7kg	7kg	8,2kg
Dust safe and waterproof	yes (IP68 rating)	yes (IP68 rating)	yes (IP67 rating)

Accessories for inspection cameras

Locator (receiver)

Wireless location receiver makes it possible to precisely locate the camera head inside the duct. Fits all camera models.



Camera head Ø26mm

Forward facing Ø26mm color camera head can replace the larger Ø40mm camera head for inspection of smaller ducts.



Protective sleeve

Protects the plastic domes of the Ø40mm camera head from scratching.



Centering brush

The centering brush of Ø200mm centers the camera head inside the duct for more clear and steady visualisation. Fits all camera models.



Camera trolley

Positions the camera head perfectly in the pipe. Designed for use in air ducts sized Ø 150 mm and above or 150 x 150 mm. Fits all VIS camera heads.

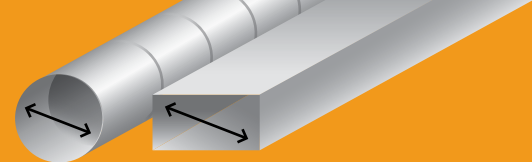


Camera Roller Guide

Helps the camera head to slide along the duct. Fits all camera models.



Sets for cleaning grease ducts



125-315mm

Sets for cleaning grease ducts Ø125-Ø315mm

Economy

Basic

Advanced

Professional

ECO/315/G

BAS/315/G

ADV/315/G

PRO/315/G

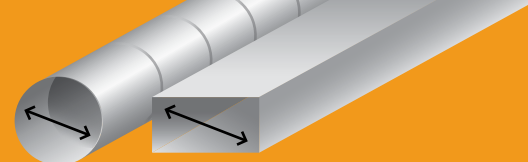
WASHING EQUIPMENT

CS-8 Combi-shaft, 8m	1			
EDW-15 Electric duct washing machine		1		
EDW-15S Electric duct washing machine			1	1
C-brush set, Hard, 5pcs (Ø125-Ø315)	1	1	1	1
C-brush set, Extra Hard, 5pcs (Ø125-Ø315)	1	1	1	1
C-brush set, Stainless Steel, 5pcs (Ø125-Ø315)		1	1	1
Carrying bag for shafts	1	1	1	1
Foaming nozzle + chemical doser + bottle for chemicals		1	1	1
FT-24 Foam tank, 24L	1		1	1
Rinsing nozzle set (3 nozzles)	1			
HW-45T HotWasher with 40L water tank				1

INSPECTION EQUIPMENT

VIS-200 Inspection camera	1			
VIS-250 Inspection camera		1		
VIS-350 Inspection camera			1	1
Camera roller guide	1	1	1	1
Centering brush Ø20cm		1	1	1
Protection sleeve for Ø40 mm camera head			1	1

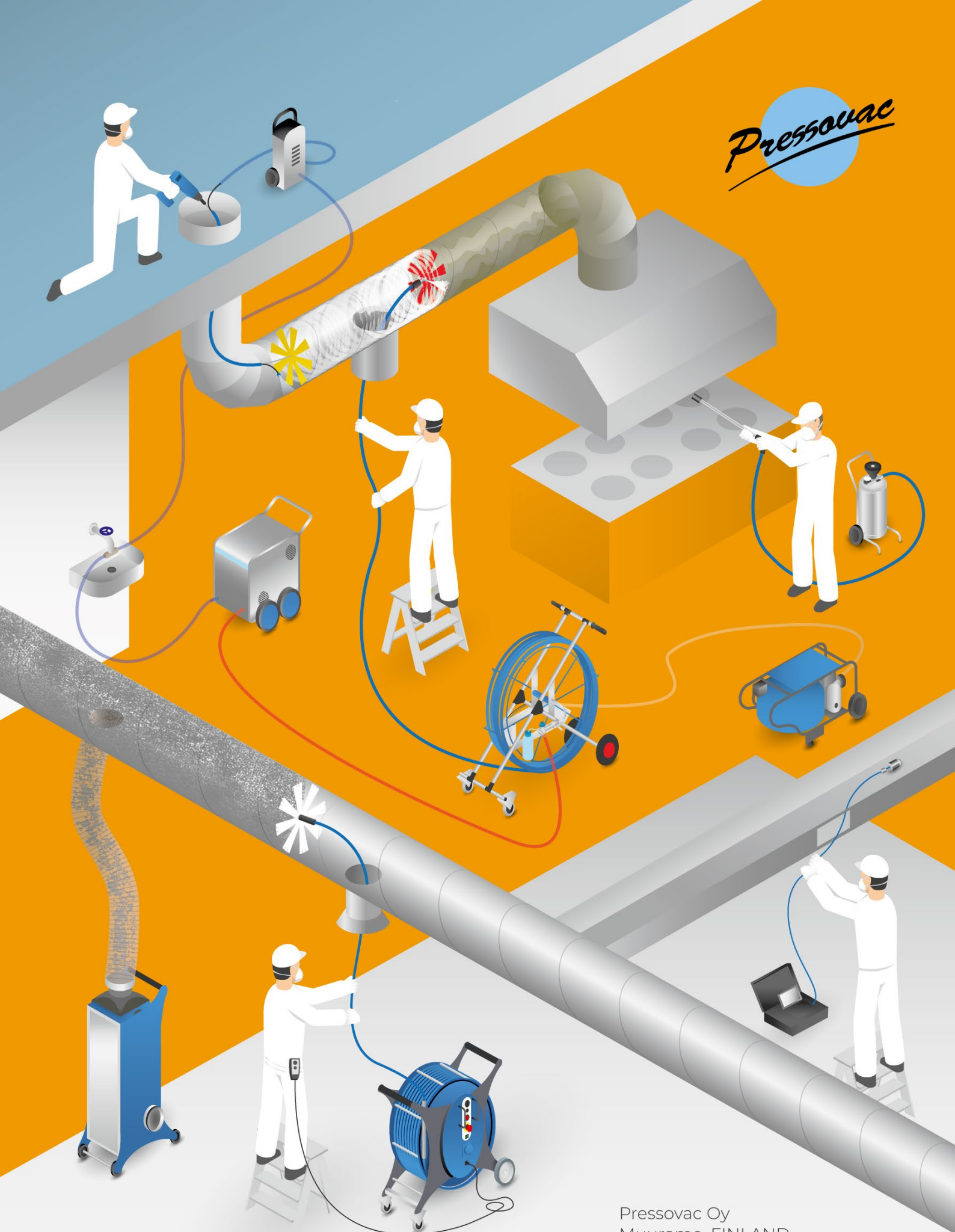
Sets for cleaning grease ducts



125-800mm

Sets for cleaning grease ducts Ø125-Ø800mm	Economy	Basic	Advanced	Professional
	ECO/800/G	BAS/800/G	ADV/800/G	PRO/800/G
WASHING EQUIPMENT				
CS-5 Combi-shaft, 5m			1	1
CS-8 Combi-shaft, 8m	1			
EDW-15 Electric duct washing machine		1		
EDW-15S Electric duct washing machine			1	1
PDW-25 Pneumatic duct washing machine	1	1		
PDW-30 Pneumatic duct washing machine			1	1
Automatic brush rotation direction change		1	1	1
Pneumatic brush centralizer for PDW			1	1
T-adapter for PDW				1
Wireless remote control				1
C-brush set, Hard, 5 pcs (Ø125-Ø315)	1	1	1	1
C-brush set, Extra Hard, 5 pcs (Ø125-Ø315)	1	1	1	1
C-brush set, Stainless steel, 5 pcs (Ø125-Ø315)			1	1
S-brush set, Hard, 7 pcs (Ø200-Ø800)	1	1	1	1
S-brush set, Extra Hard, 7 pcs (Ø200-Ø800)	1	1	1	1
S-brush set, Carbide, 7 pcs (Ø200-Ø800)			1	1
S-brush set, Stainless steel, 7 pcs (Ø200-Ø800)				1
L-brush set, Hard, 5 pcs (Ø200-Ø500)			1	2
L-brush set, Extra Hard, 5 pcs (Ø200-Ø500)			1	2
L-brush set, Carbide, 5 pcs (Ø200-Ø500)			1	2
Carrying bag for shafts	1	1	1	1
Foaming nozzle + chemical doser + bottle		1	1	1
FT-24 Foam tank, 24L	1		1	1
Rinsing nozzle set (3 nozzles)	1			
HW-45T HotWasher with 40L water tank				1
INSPECTION EQUIPMENT				
VIS-200 Inspection camera	1			
VIS-250 Inspection camera		1		
VIS-350 Inspection camera			1	1
Camera roller guide	1	1	1	1
Centering brush Ø20cm		1	1	1
Protection sleeve for Ø40 mm camera head			1	1

Pressovac



Pressovac Oy
Muurame, FINLAND
www.pressovac.fi