



## MOSH AND DAUGHTERS GREENFIELDS PVT LTD

E Ep E E E E p E E  
E E E E E E

M M MM EE E uE  
E E E E E E

 **Mrit-Q**  
AYURVEDA & WELLNESS

  
*Moments*


  
*Spice*  
**MUSTRY**


 [mrilq](https://www.instagram.com/mrilq)

 [www.mrilq.com](http://www.mrilq.com)

 [+91 93903 85962](tel:+919390385962)

 [info@mrilq.com](mailto:info@mrilq.com)

 AgHub, PJTSAU, Hyderabad,  
Telangana, India- 500030

 TREC-STEP, NIT Campus,  
Thuvakudi, Tiruchirapalli,  
Tamil Nadu, India- 620015



# INDEX

03

e CB B B  
\_\_\_\_\_

04

Bv

05

B \_\_\_\_\_

06

\_\_\_\_\_

07

CB B \_\_\_\_\_

08

C B eB

09

C B \_\_\_\_\_

10

T B BB BV

11

T B BB BV

12

B

13

y \_\_\_\_\_

## M&D: A World of Pure Possibilities

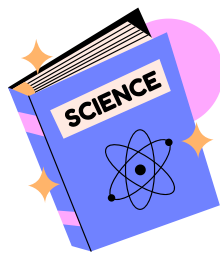
**U S ⓘ**

[illegible]

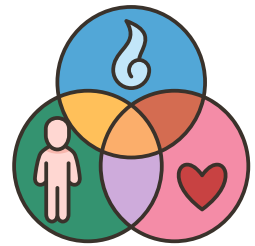
**S S SJ**



## Sustainability



## Blending Tradition and Science



## Holistic Care


f C C C C C

C C C C C




# The Future of Beauty is GREEN





### Vision

### Mission





B

B

C



B

o



B  
B

B




B




SOCIAL Impact

F




I

D D D




E

D D D D




D D



D


F

F F

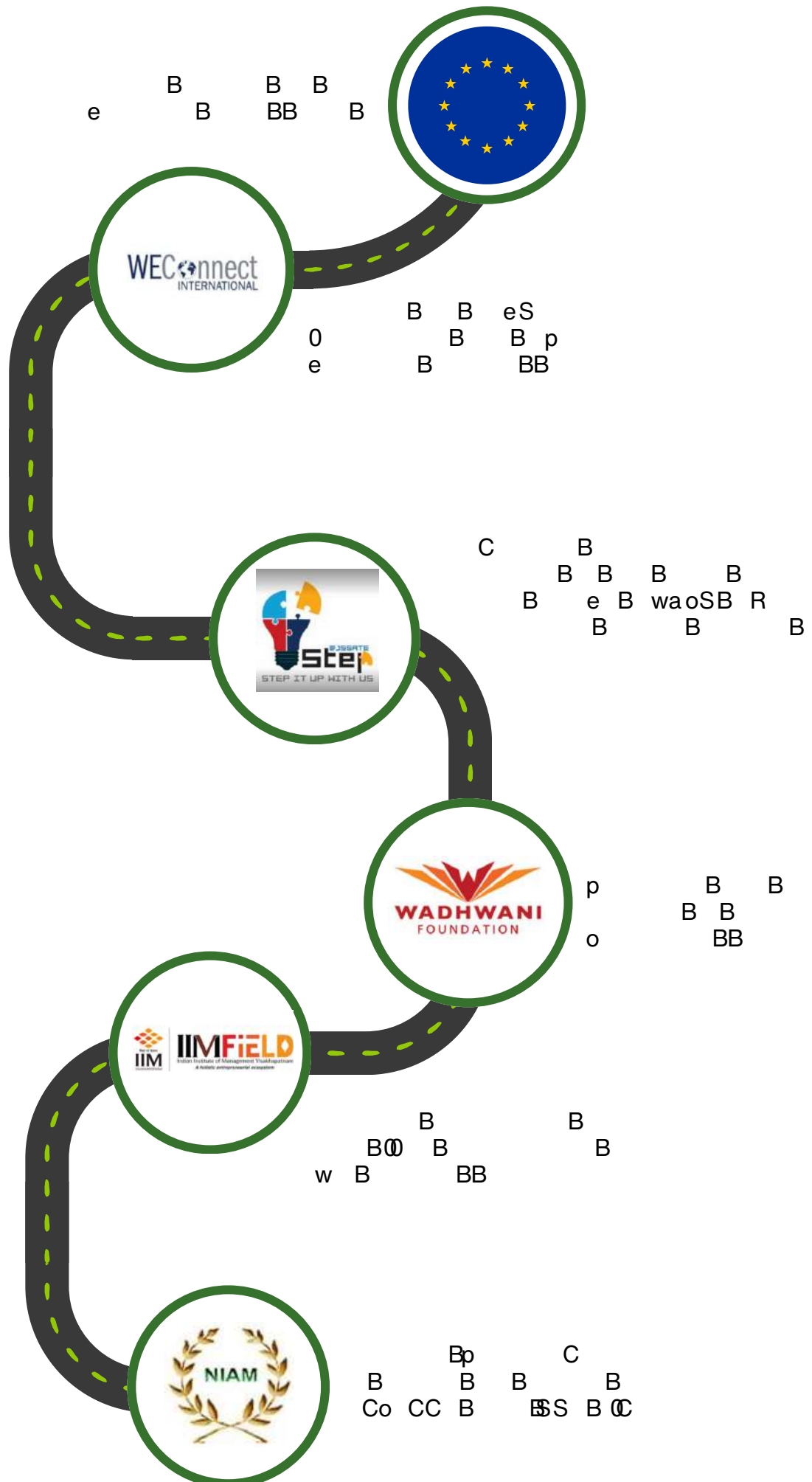


p

D D D DD



D D D D D D D D D D D D





**B**      **B** **B** **B**      **B** **B**      **B**      **B**  
B      B      B      B      B



**B**    **B**    B    B    B B  
B    B    B        B    B    B    B

**B**            B                  BB  
B            B B            B            B    B    B

**d**



**B**   **C**   **B**   **B**   **B**   **B**   **B**   **B**

**B**   **B**   **B**   **B**   **B**   **B**   **B**

s                    B   B                    BB                    B  
                       B                    B   B                    B   B                    B  
                   B



**B** B B B B B B B B B B B







p C C C C C C C C C C C C



C C C C C C C C C C

C C C C C C C C C C C C



C C C C C C C C C C

C C C C C C C C C C C C



C C C C C C C C C C C C

s C C C C C C C C C C



C C C C C C C C C C







G G G G G G G G G



G F G FG G G G G

I F G G G G G



F F F FF G G G

F F F FF G



F F F FF G G

F F G G G G



## Face Hydration Kit

**in c**      C C      C      C      C      C      C      C      C      C      C      C

         C      C      C      C      C      C      C      C      C      C      C

     C      C      C      C      C      C      C      C      C      C      C

     C      C      C      C      C      C      C      C      C      C      C

**an n**    CC      C      C      C      C



$\begin{array}{ccccc} & & i & & c \\ & & c & & \\ c & & & & \end{array}$



## Clove



## Marigold



## Barley



## Jojoba

# Acne Control Kit

i n c      C C      C      C      C      C      C      C      C      C      C  
         C    R    G  
 a n n    C R    C      C



**C** **i** **C** **a**



## Neem

Jawar



## Amla



## Marigold

BEST SELLER

# Hair Care: Range

11

## Healthy Hair / Volume Maintenance KIT

i o b D Ds D D D D D D D D D D  
 D D D D D D D D D D D D D  
 D D D D D D D D D D D D  
 a o o CD D D D



C



C



CC



C



Hibiscus



Amla



Green Gram



Coconut

## Hair Color Combo Pack

i o b D Ds D D D D D D D D D  
 D D D D D D D D D D D D  
 D D D D D D D D D D D  
 a o o CD D D



C



CC



CC



Indigo



Okra



Turmeric



Clove

NEW

12

## Newly Launched : Range

B BB B

B B B B B B B

B B B B B B B

B B B B B B B

i x x BB B Bn w B B

BB B B B B B B



Hibiscus



Aloe Vera



Amla



Mint

B B BB B

CB B B B B B B

B B B B B B B

B B B B B B B

B B B B B B B

i x x BB B Bn B B

BB B B B B B B



Lakadong



Bay Leaves



Stone Apple



water spinach

xEBB B B

CB B B B B B B

x' B B B B B B

B B B B B B B

BB B B B B B B

B B B B B B B

i x x B B B B B B

BB B B B B B B



Turmeric



Clove



Black pepper



Basil



