



New European Bauhaus Facility - Matchmaking event 2025



Re-Mossing Our Shared Spaces – Re-Moss

André Voet
Founder – CEO EnGreDi BV
Prof. Em. KU Leuven

Office: +32 15 24 90 24
Mobile: +32 496 12 23 86
Email: andre@engredi.be

Exploitation site
Kegelstraat 18
2580 Putte
Belgium

www.engredi.be

Mosses as heroes of the botanical world,
... bud even more of the human world



New European Bauhaus Facility - Matchmaking event 2025



Call topics we are interested

- **HORIZON-NEB-2025-01-REGEN-01:** Applying regenerative design to the built environment in neighbourhoods
- **HORIZON-NEB-2025-01-REGEN-02:** Bio-fabricated materials for sustainable and beautiful construction
- **HORIZON-NEB-2025-01-PARTICIPATION-03:** Beautiful, sustainable and inclusive street furniture for the transformation of neighbourhoods

Who we are

- EnGreDi BV is a Flemish SME pioneering **ecological moss production** and its application in **moss-based systems**.
- Our goal is to make a significant contribution **to human health and to both the local and global environment** by leveraging the unique properties of mosses.
- In doing so, we support the EU's strategic goals on **climate mitigation and adaptation**, as well as improvements in **air and water quality**.
- We are developing **hybrid building solutions—ready for piloting and scale**—that combine conventional materials with bio-integrated, moss-based systems.

Examples from our
portfolio of 42 moss
species



Kind of expertise we can contribute

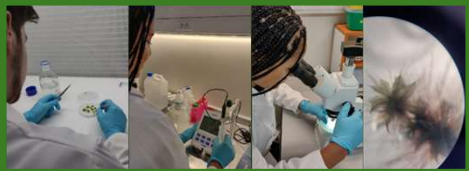
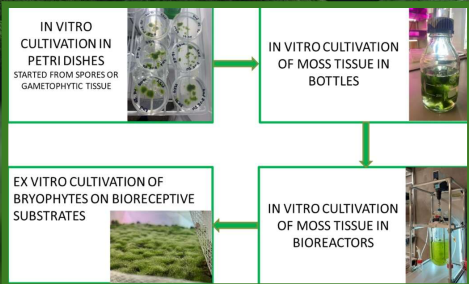
- EnGreDi's moss systems improve building performance by **sequestering carbon, cleaning air, improving thermal comfort, and buffering water**.
- When paired with **air quality sensors**, they enable data-driven optimization and interactive public feedback.
- Enabling **green architectural transitions** by introducing moss-based living systems as biophilic, low-tech, and participatory design elements.
- For **academic and urban pilot projects**, moss can be integrated into **roofs, facades, walls, or street furniture**.

What we are looking for

- EnGreDi is seeking - **as partner** - to join a participatory and transdisciplinary consortium under the leadership of a committed and purpose-driven coordinator.
- Outlined below and detailed in the next slide:
 - Green technology developing companies
 - Architects and designers
 - Social sciences and humanities experts
 - Universities and research institutes
 - Municipalities and public developers
 - Policy & advocacy entities
 - Regulatory and testing institutions

Potential Partner Types	Descriptions
Green technology companies: specialists in biotechnology and green infrastructure	European Green Deal as a guide
Sustainability consultancies, e.g., BREEAM, LEED advisors	
Architects and landscape architects, with a focus on aesthetic excellence and sustainable design	Aesthetics and experience
Design studios, specialized in interior design, product design, and urban design	
Biophilic design experts: specialists in integrating nature into built environments	
Art academies & creative education institutions: collaborations for innovation & fresh talent pipelines	
Social enterprises: employing people with barriers to the labor market	Bridging the gap between people, sustainability and beauty
Community organizations: neighborhood associations, local inclusion networks	
Diversity and inclusion advisory firms: for culture, leadership, and inclusive design strategies	
Educational institutions: for participatory projects, internships, co-creation with young people	
R&D in biotechnology, green infrastructure and sustainability	Implementation of the expertise of universities and research institutes
R&D in architecture and landscape architecture	
R&D in diversity and inclusion	
Municipalities, urban planners, local authorities, ...	Ability to pilot applications in real neighbourhoods
Startups, innovation hubs, sustainable economy experts, ...	Develop viable business models and commercialization strategies
Concerned citizens, think tanks, policy institutes, NGOs, ...	How ideas turn into action
Communication agencies, media labs, citizen organisations, ...	Lead dissemination, stakeholder engagement, and citizen science

EnGreDi's technology platform



Worldwide moss-applications

