



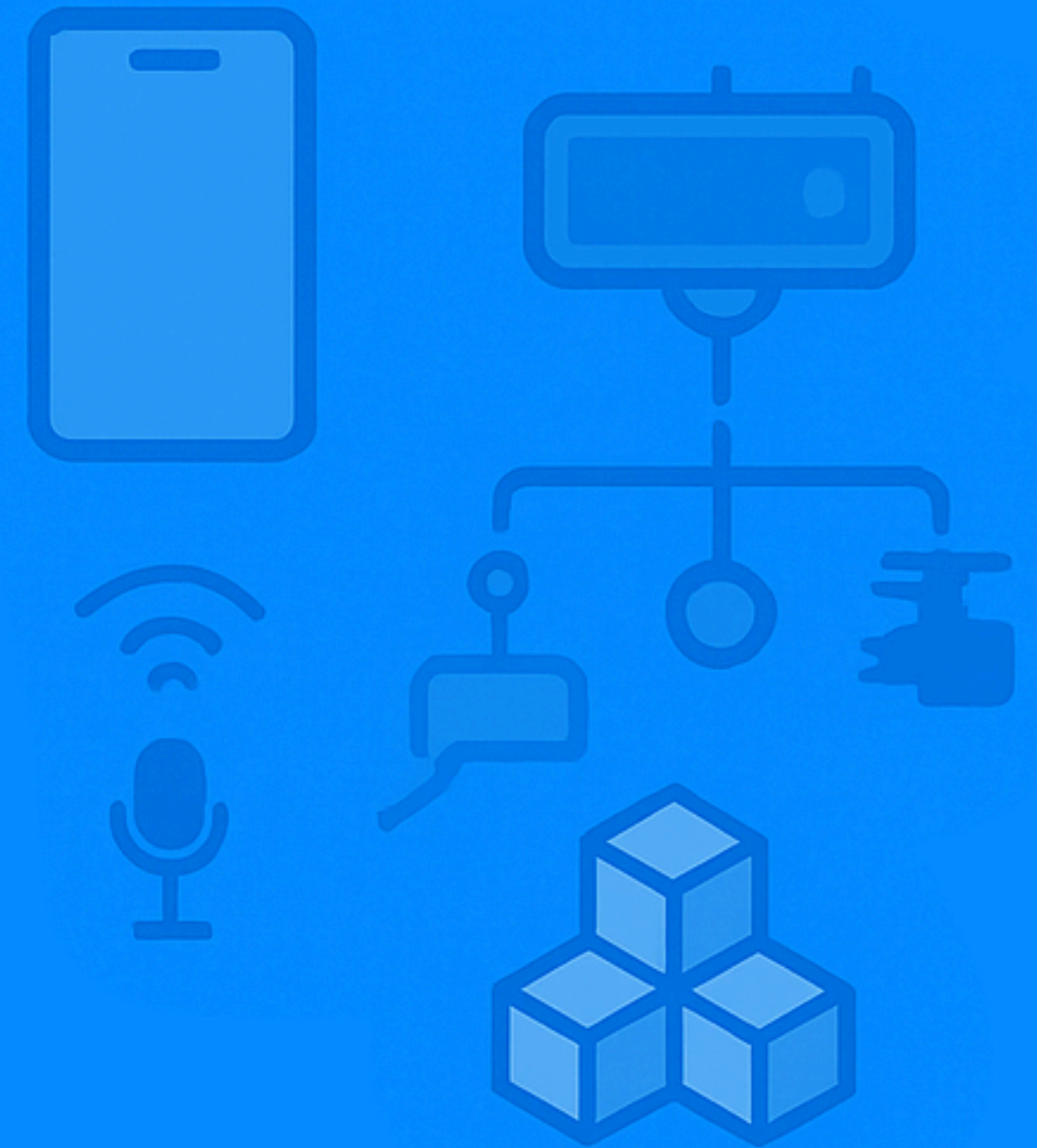
# SecureNet

AI for Global Safety

# What is SecureNet

SecureNet is a modular, intelligent security management platform  
Integrates AI, smartphone, wearables, chatbots, drones, and blockchain to protect people, data, and critical infrastructure in real-time

- ① Autonomous CRM for enterprise, public, and operational security
- ② Suitable for enterprises, NGOs, public institutions, security forces, transportation, and international organizations



# Target Clients

- Private companies and multinationals
- Ministries of defense and police forces
- Humanitarian NGOs and international organizations
- Critical infrastructure operators
- Travel and insurance companies

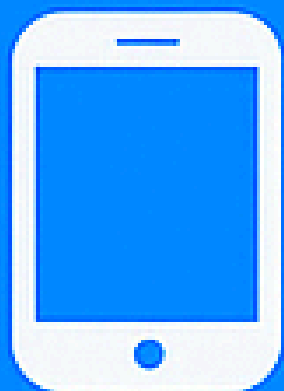


# One Intelligent Platform. TotalSecurity.

SecureNet is a single, intelligent platform that manages security in real time.

It connects smartphones, drones, AR glasses, biometric watches, vehicles, and smart infrastructure. Each device transmits key data: location, audio, and biometric parameters.

Artificial intelligence synchronizes everything, detects threats, and triggers immediate responses. It's total, coordinated security, anywhere.

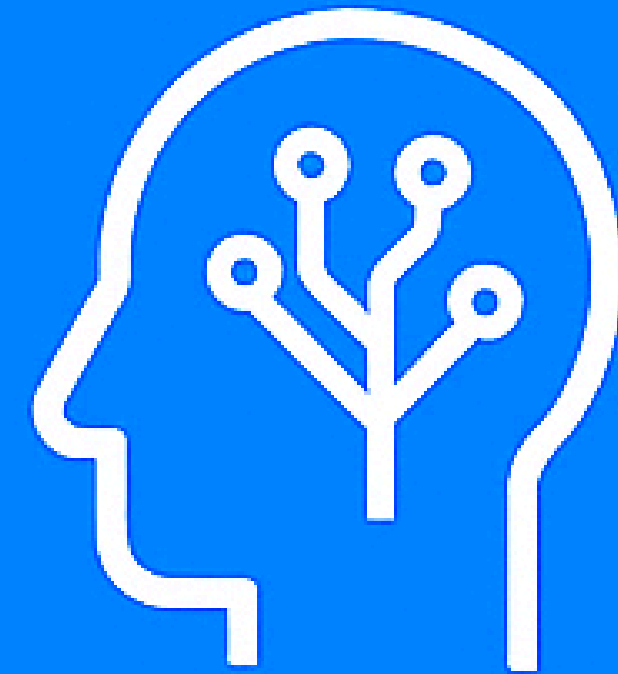


# Predictive AI and Threat Detection

SecureNet uses advanced AI to detect anomalies and emerging threats before they escalate.

It analyzes geolocation, voice, stress levels, biometric and behavioral data in real time.

The system alerts responders instantly and prioritizes risks based on context and severity.



# Real-Time Communication and Coordination

Emergency alerts are triggered with a tap from any device: smartwatch, app, or biometric ring.

Chatbots guide the user through critical situations while messages, videos, and GPS locations are instantly shared.

SecureNet ensures encrypted communications and unified action across all stakeholders.



# Blockchain and Digital Evidence

All incident data is stored on private blockchain for integrity and legal traceability.

Photos, videos, voice recordings, and sensor data are timestamped and cryptographically signed.

This ensures that no evidence can be altered, manipulated, or lost.



# Smart Dashboards and Command Interface

Operators monitor activity through interactive dashboards powered by live maps and data streams.

Visual alerts, heatmaps, and device status are displayed in real-time.

The AI suggests optimal response strategies for each incident.

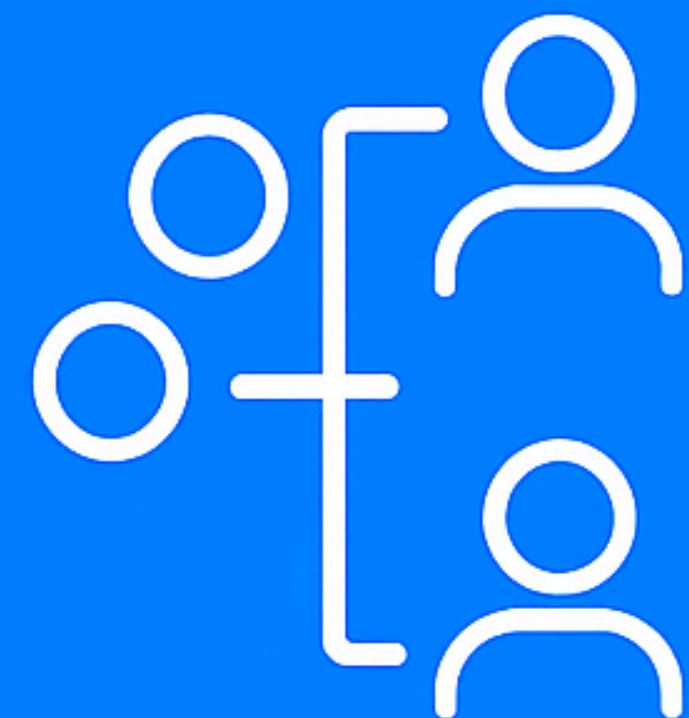


# Automated AI Response

AI classifies and escalates threats autonomously.

From lockdowns to medical support or security deployment, actions are triggered in seconds.

The system also coordinates teams and resources based on predefined protocols.



# Data Privacy and Encryption

SecureNet is fully GDPR-compliant and built on a privacy-first architecture.

It uses end-to-end encryption, zero-knowledge protocols, and user-level permissions to protect all data.

"Ghost Mode" allows anonymous alerts and secure whistleblowing.

All data processing is auditable and aligned with EU and global standards.



# Multistakeholder Collaboration

NGOs, municipalities, agencies, and international actors can collaborate in shared crisis scenarios.

SecureNet provides shared encrypted spaces, coordination tools, and digital resource maps.

Crisis management becomes unified and efficient.



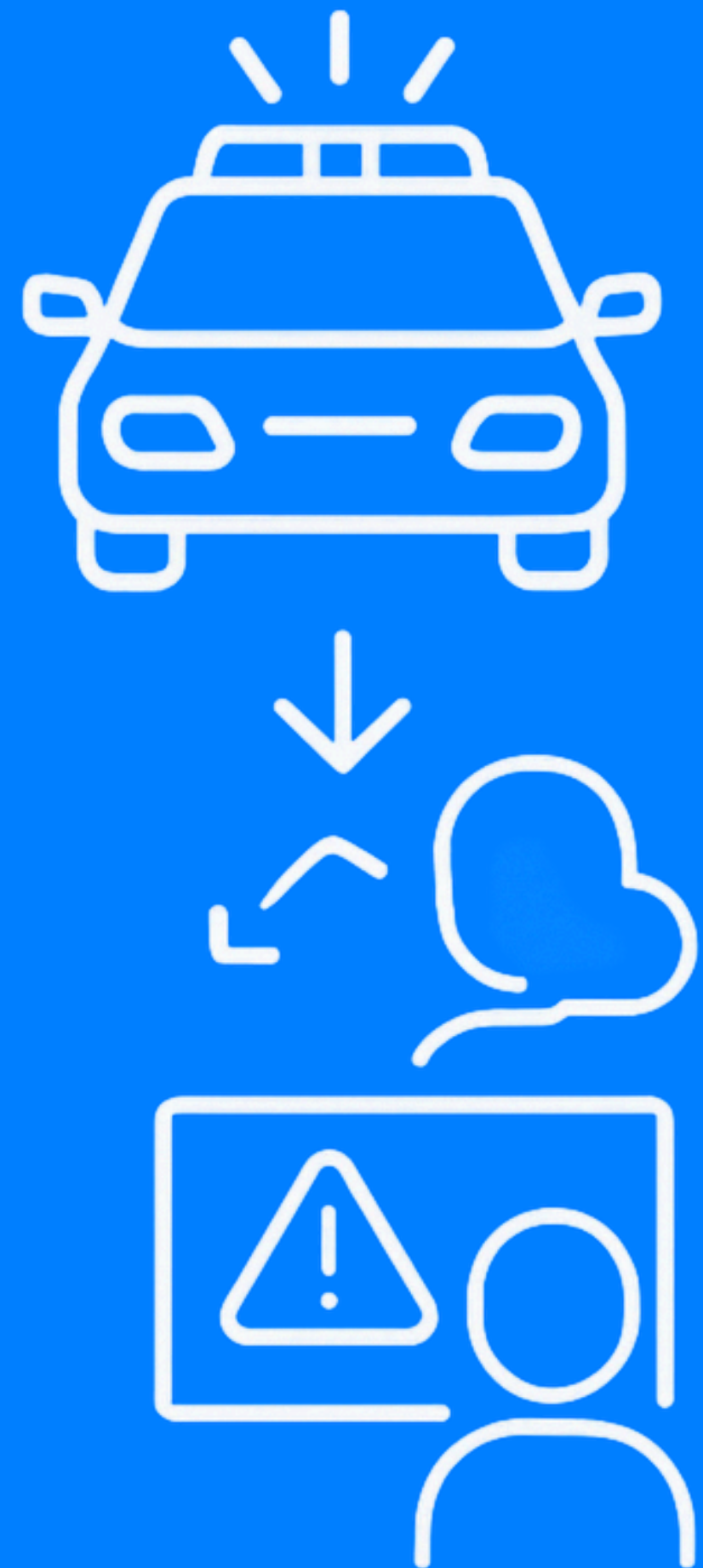
# Integration with Law Enforcement and Security

SecureNet integrates directly with police, emergency units, and control centers.

Verified alerts are shared instantly via secure APIs and AI-managed channels.

User privacy remains protected through encryption and permission layers.

Authorities act on incidents in real time while maintaining legal compliance.



# Business Model

SaaS for private and nonprofit sectors  
(e.g. travel agencies, logistics,  
construction, education)

Self-hosted licenses for governments  
and institutions

Custom modules and marketplace  
for AI extensions

Flexible pricing based on industry  
needs and scale of deployment



# Scalability and Market Strategy

Modular deployment: from local pilot projects to nationwide implementations

Ready-to-integrate with existing security and CRM systems

Designed for vertical scalability in high-demand environments

Available in multilingual versions to support global rollouts

Partnership opportunities with system integrators and solution providers



# Impact & Future Vision

SecureNet aims to redefine safety in the digital age.

It empowers organizations to anticipate, prevent and manage threats with unprecedented speed and precision.

Our vision: a safer, smarter, and more connected world—where technology protects lives and freedoms every day.





# SECURENET

Powered by INFOMYCITY OÜ

Legal headquarters: Männimäe/1, Puidisoo  
küla, Kuusalu vald, Harju maakond 74626  
– Estonia

Registration code: 16910603  
worldvanguardgroup@gmail.com