

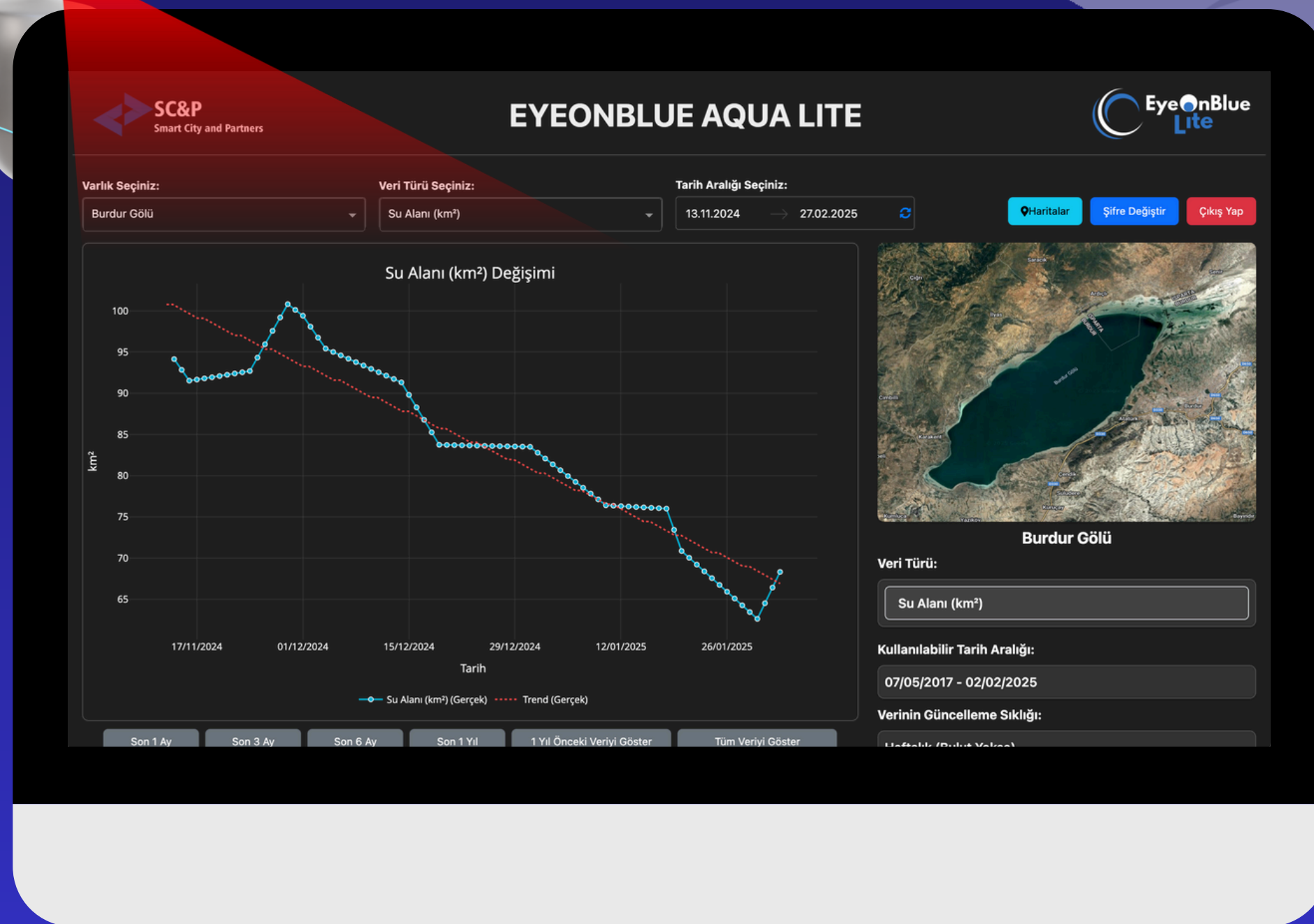
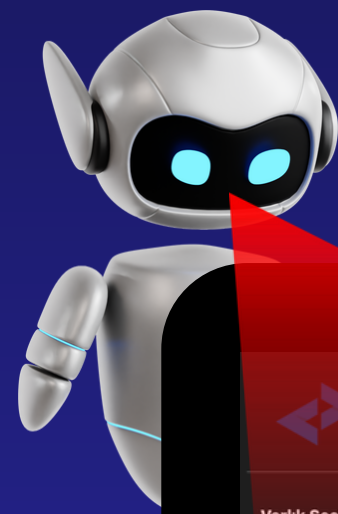


SMART WATER MANAGEMENT FOR HYDROELECTRIC POWER PLANTS – PREVENT WATER LOSS, INCREASE YOUR PROFITABILITY!

## WATER RESOURCES AND WATERSHED MANAGEMENT: OPTIMUM OPERATION AND SUSTAINABILITY

EyeOnBlue Aqua Lite minimizes the risks of uncontrolled water level changes and water losses, ensuring uninterrupted and maximum efficiency for your hydroelectric power plants. Effective watershed management is not only crucial for a single plant but also for the entire region's energy production, efficiency, and sustainability. Managing water resources efficiently reduces long-term costs, increases profitability, and minimizes environmental risks.

EyeOnBlue Aqua Lite is an advanced remote sensing and data analysis platform designed for hydroelectric plants and water resources. With satellite data and AI-powered analyses, it continuously monitors changes in water levels, precipitation, and anomalies at high observation frequencies, improving operational efficiency. Additionally, its Agentive AI technology enables proactive decision-making by providing automated insights and recommendations for power plant management.



## WHY EYEONBLUE AQUA LITE?

- ✓ ECOSYSTEM CHANGE ANALYSIS & SPATIAL CLASSIFICATION
- ✓ CONTINUOUS & SMART WATER MANAGEMENT
- ✓ PREDICTION & EARLY WARNING SYSTEM
- ✓ CONTINUOUS WATER QUALITY MONITORING
- ✓ OPERATIONAL EFFICIENCY
- ✓ ENVIRONMENTAL RISK ANALYSIS
- ✓ EASY INTEGRATION

INCREASE YOUR POWER PLANT'S PRODUCTION CAPACITY, REDUCE MAINTENANCE COSTS, AND ENSURE SUSTAINABILITY! REQUEST A DEMO NOW AND TAKE YOUR OPERATIONS TO THE NEXT LEVEL!



+90 530 314 35 25



info@smartcityandpartners.com

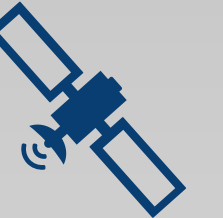


www.smartcityandpartners.com



## MAIN FEATURES

**Satellite-Based Data Analysis** – Continuously monitor water level, temperature, precipitation, and chlorophyll index at high observation frequencies.



**Time Series Graphs** – Compare past and current changes for long-term analysis.



**Smart Notifications** – Get alerts at critical thresholds and make fast operational decisions.



**Sensitive Water Measurement** – Accurately track water area losses and take proactive measures.



**Cloud-Based & Accessible** – Access the platform from anywhere and manage operations with real-time satellite data.

