

Training workshop organised by
Transport Innovation Association

Customs Digitalisation

The Role of the Customs Practitioners Association



Enrika Naujokė

CEO at [CustomsClear](#), director at [LCPA](#)
12.3.2025



MUITINĖS
PRAKTIKŲ
ASOCIACIJA



CustomsClear

Content

1. Introduction LCPA, CustomsClear
2. AI in the EU; and globally
3. EU customs digitalisation – challenges and developments
4. AI application at Lithuanian Customs
5. Business use cases
6. Summary

1. Introduction LCPA, CustomsClear



LITUANINĖS
PRAKTIKŲ
ASOCIACIJA



CustomsClear

Lithuanian Customs Practitioners Association (LCPA)

- Established 2019
- 60 members, from SMEs to DHL, Thermo Fisher, Lithuanian Rail, Lithuanian Post, etc.

Activities:

- Trained 300+ customs brokers
- Shaping legislation: Customs Consultative Committee
- International cooperation



- Conferences – national and international

Customs Ecosystem Conference

6-7 October 2025
Vilnius, Lithuania

Customs, Associations, Businesses and Academia come together to contribute to taking the Customs Ecosystem in Europe to the next level.

Facilitated by an ecosystem growth professional!

 Palace of the Grand Dukes of Lithuania
Katedros sq. 4, Vilnius

Organisers



Customs of Lithuania



Lithuanian Customs Practitioners' Association



PROGRAMME

Taking the customs ecosystem to the next level: what, how and when?

5 October 2025

Join us for a dinner (self-pay)

6 October 2025 - 1st day of the conference

19.00

8.00-9.00

Registration

9.00-9.30

Welcome address

9.30-11.00

CUSTOMS

11.00-11.30

Break

11.30-13.00

ASSOCIATIONS

13.00-14.30

Lunch

14.30-16.00

ACADEMIA

16.00-16.30

Break

16.30-18.00

BUSINESS

18.00-18.30

Closing remarks

19.30-22.00

Dinner in the Grand Renaissance Hall

22.00

Join us for drinks (self-pay)

7 October 2025 - 2nd day of the conference

8.00-9.00

Coffee

9.00-10.00

WORKSHOP 1 AND 2

10.00-10.30

Break

10.30-11.30

WORKSHOP 3 AND 4

11.30-12.00

Break

12.00-13.00

WORKSHOP 5 AND 6

13.00-13.30

Closing address

13.30-14.30

Lunch

14.30-16.00

Guided tour of the Palace of the Grand Dukes of Lithuania

16.00-18.00

Guided tour of Vilnius city center

18.00

Join us for a dinner

CustomsClear

www.customsclear.net – the European customs and trade compliance knowledge platform

The screenshot shows the homepage of CustomsClear. At the top, there is a navigation bar with the logo, menu items (Services, Pricing, Courses, Events, Newsletter, EU project), a shopping cart icon with a '0' notification, and buttons for 'Login' and 'Sign up'. Below the navigation is a hero section with a background image of a woman working at a computer. The main headline reads 'Your trade and customs knowledge go-to-place'. Below this is a sub-headline: 'Keeping your trade and customs knowledge up-to-date has never been easier!'. A search bar with the placeholder text 'Quick search' and a 'Search' button is positioned below the sub-headline. The 'Featured content' section is located below the hero section, displaying four items. The first item is a course titled 'Customs clearance and trade compliance in the EU course' by Customs Knowledge Institute (CKI), priced at €2,400.00. The second item is 'EU customs and trade news: March 2025' dated 09-03-2025, with a brief description of news items. The third item is a video titled 'Description of goods in foreign trade processes (in the EU)' by Christopher Matt. The fourth item is a video titled 'AI & Customs Series. Episode 2: cutting red tape' by Vincent van Dijk. The text 'Showing 4 of 4' is visible in the top right corner of the featured content area.



PICOCO
Customs Knowledge Assistant



Co-funded by
the European Union

Picoco, the AI-based engine behind Personal Customs & Regulations Knowledge Assistants, is revolutionising the way we interact with customs regulations and international trade legislation. Picoco takes your 'chatbot' to the next level by empowering it to understand your needs and provide you with tailored support to help you navigate complex legal frameworks and international trade regulations. We launched in November 2024. Sign up to stay informed about new developments!

Lithuanian Customs deploys Picoco AI

The first AI assistant based on the Picoco engine was deployed on the Lithuanian Customs website - our first customer - on 31 December 2024. Prior to this, a security audit was conducted by the National Cyber Security Centre, confirming that the AI assistant meets all high security requirements. We present the project in the video below.



2. AI in the EU; and globally



AI is inevitably changing the world

Speech by President von der Leyen at the Artificial Intelligence Action Summit



Too often, I hear that Europe is late to the race – while the US and China have already gotten ahead. I disagree. Because the AI race is far from over. Truth is, we are only at the beginning. The frontier is constantly moving. And global leadership is still up for grabs. And behind the frontier, lies the whole world of AI adoption.

https://ec.europa.eu/commission/presscorner/detail/en/speech_25_471

Nobel prize to the 'godfather of AI'

<https://www.nobelprize.org/prizes/physics/2024/hinton/facts/>

Geoffrey Hinton Facts



Geoffrey Hinton
Nobel Prize in Physics 2024

Born: 6 December 1947, London, United Kingdom

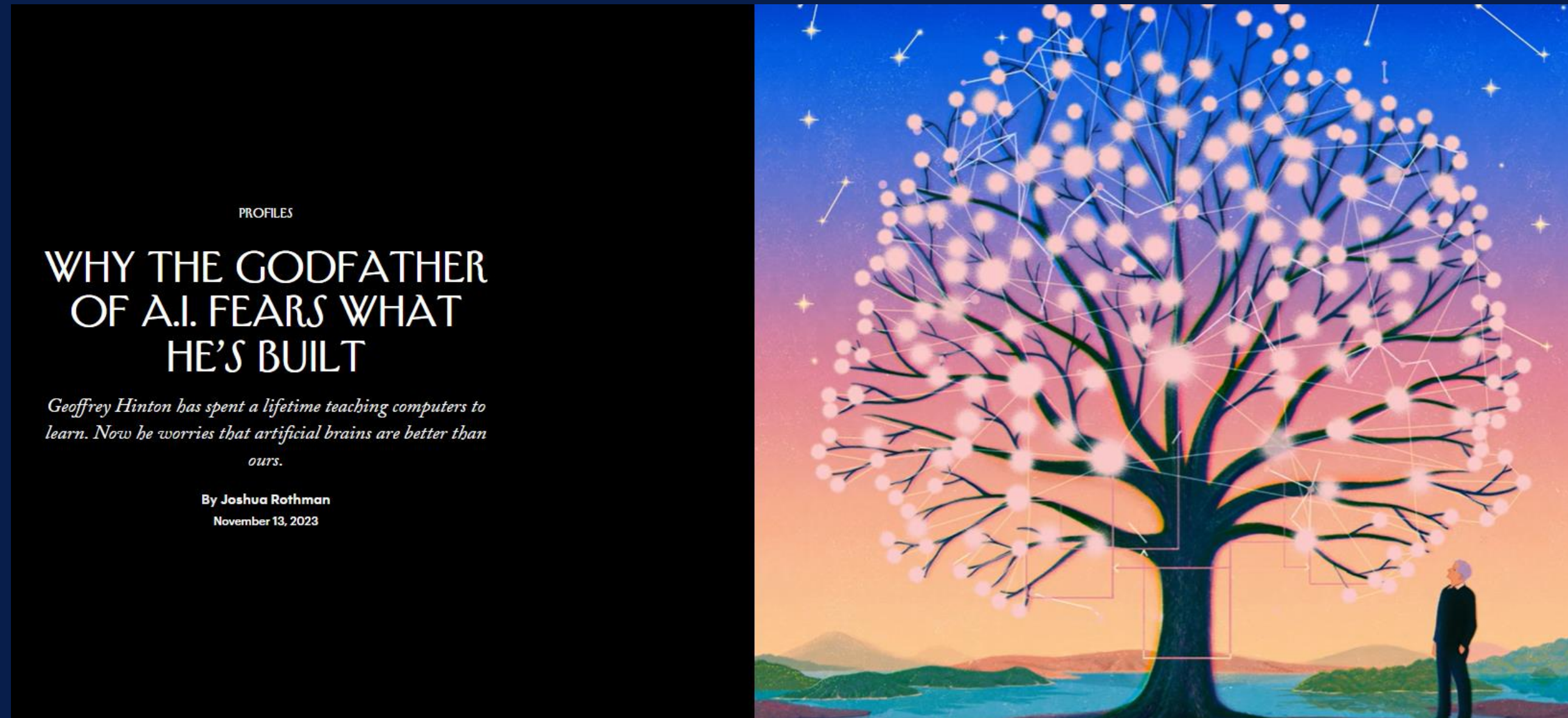
Affiliation at the time of the award: University of Toronto,
Toronto, Canada

Prize motivation: “for foundational discoveries and
inventions that enable machine learning with artificial
neural networks”

Prize share: 1/2

© Nobel Prize Outreach.
Photo: Clément Morin

Humans: will we stay smarter and in control?



<https://www.newyorker.com/magazine/2023/11/20/geoffrey-hinton-profile-ai>

3. EU customs digitalisation – challenges and developments



Challenges



"The legal complexity is unprecedented."

Frank Heijmann, Counsellor Customs, Permanent Representation of The Netherlands to the EU

"The lack of customs HR is increasing.
Data quality in customs declarations is decreasing."

Darius Žvironas, Director General, Lithuanian Customs



1. Legal complexity is unprecedented (int. sanctions, CBAM, EUDR, ESPR, etc.)
2. The lack of customs expertise is increasing
3. Data quality in customs declarations is decreasing

EU IT systems – latest updates

Extension of the transition period to the Automated Export System (AES)

7.2.2025 [European Commission](#) announced that the committee in charge has approved the revised Implementing Regulation on Technical Arrangements (IRTA) containing a provision enabling the extension of the transition period to the Automated Export System (AES) until 14 December 2025 (the transitional rules for AES were due to expire on 11 February 2025, see news announcement '[Transition to the Automated Export System \(AES\)](#)'). Commission noted that: this extension is crucial to avoid serious trade disruptions; it limits the impact on European businesses exporting goods out of the Union - Member States and economic operators will have sufficient time to finalise the migration to AES. See also a notification by Irish Customs '[AES Change of end date of Transitional Rules](#)'.

Irish Customs: for export movements to be closed out correctly, supply chain communication is key

5.2.2025 [Irish Tax and Customs Authority](#) issued a notification '[AES Invalidations and how to correctly complete the Export Procedure](#)' highlighting that for export movements to be closed out correctly, supply chain communication is key. All parties in the export supply chain need to discuss and know who will share the export MRN, create the PBN and for non-RoRo movements, lodge the IE507 (Arrival at Exit) and IE590 (Exit Notification) messages.

EU Import Control System 2 (ICS2) extends to rail and road transportation

3.2.2025 [ICS2: from 1 April 2025](#), road and rail carriers will need to provide data on goods sent to or through the EU prior to their arrival, through a complete ENS. This obligation also concerns postal and express carriers who transport goods using these modes of transport as well as other parties, such as logistics providers. In certain circumstances, final consignees established in the EU will also have to submit ENS data to ICS2.

EU Customs Reform

Key elements of the customs reform

Simpler processes

- New partnership with trade
- Strengthened risk management
- Cooperation framework

EU Customs Data Hub

- Collect information from multiple sources
- Risk-analyse the supply-chain data
- Share data with other authorities

EU Customs Authority

- Operational EU risk analysis in real-time
- Operational priorities + coordinated controls
- Coordination and support

The three blocks reinforce each other:
Empower customs, with more information and coordinated action.
Facilitate trade, with less administrative burden, in one system, acting as one.



4. AI application at Lithuanian Customs



MUITINĖS
PRAKTIKŲ
ASOCIACIJA



CustomsClear

Demo

<https://lrmuitine.lt/web/guest/titulinis>

LIETUVOS RESPUBLIKOS MUITINĖ

2025 m. kovo 11 d. Paieška Raktinis žodis Pasirinkti

Titulinis puslapis (Alt + '0', 'Enter')
Svetainės struktūra (Alt + 'T', 'Enter')
Siųsti el. laišką (Alt + 'M', 'Enter')

Kita kalba (Alt + 'L', 'Enter')
Paieška (Alt + 'S', 'Enter')
Leidinių katalogas (Alt + 'Y', 'Enter')

Klausimai ir atsakymai (Alt + 'Q', 'Enter')
Šis puslapis (Alt + 'D', 'Enter')
Į puslapio pradžią (Alt + 'V', 'Enter')

Pagalba Ukrainai

Apie mus

- Lietuvos muitinė
- Istorija
- Muitinės muziejus
- Nuotraukų galerija
- Leidiniai

Naujienos

- Aktualijos
- Įvykiai

Struktūra ir kontaktai

- Lietuvos muitinės struktūra
- Vadovybė
- Vadovų darbotvarkės

Bendroji muitinės informacija:
+370 5 2665000

Dėl deklaracijų teikimo:
+370 5 2665001

El. paštas:
info@lrmuitine.lt

Verslui ir privatiems asmenims

- Aktualijos
- Eilės ir srautai pasienyje
- Muitinės konsultacinis komitetas
- Informacija pradedantiems verslą
- Užsienio prekybos tarifinis reguliavimas
- Prekių muitinis įvertinimas
- Muitinės procedūros
- Apribojimai ir draudimai
- Prekyba su ES
- Gyvenamosios vietos keitimas
- Palaidu pargabenimas

Keleiviams

- Aktualijos
- Muitinės postai
- Pasienio zonos savivaldybės
- Keliaujant po ES
- Atvykstant iš trečiųjų šalių
- Keleivio deklaracija
- Gyvenamosios vietos keitimas
- Vaistai kelionėje
- Laukinių augalų ir gyvūnų vežimas
- Grynujų pinigų deklaravimas

DAŽNIAUSIAI IEŠKOMA:

Rašyti paklausimą

5. Business use cases



Logistics company pilot

Export to China for 84771000, 84186900, 84198998

© I have checked the given list of goods for Export from European Union (EU) to China (CN) and found that all codes have restrictions and all are potentially classified as dual-use goods.

84771000 - Machinery for working rubber or plastics.

Restrictions found based on EU Taric consultation for Russia and Belarus, Council Regulation (EC) measures for Belarus (ANNEX XIV, ANNEX XXVII) and Russia (ANNEX XXI, ANNEX XXIII). Possible **classification as dual-use** goods.

84186900 - Refrigerators, freezers and other refrigerating equipment.

Restrictions found based on EU Taric consultation for Russia, Belarus and China, Council Regulation (EC) measures for Belarus (ANNEX XXVII) and Russia (ANNEX X, ANNEX XVIII, ANNEX XXI), National Belarus customs act 700. Possible **classification as dual-use** goods.

84198998 - Machinery, plant or laboratory equipment.

Restrictions found based on EU Taric consultation for Russia, Belarus and China, Council Regulation (EC) measures for Belarus (ANNEX XVIII, ANNEX XX, ANNEX XXVII) and Russia (ANNEX X, ANNEX XVIII, ANNEX XXI, ANNEX XXIII). Possible **classification as dual-use** goods.

Sources ↓

- [Taric consultation for 84771000 CN](#)
- [Taric consultation for 84186900 CN](#)
- [Taric consultation for 84198998 CN](#)
- [Taric consultation for 84771000 BY](#)
- [Taric consultation for 84771000 RU](#)
- [Taric consultation for 84186900 BY](#)
- [Taric consultation for 84186900 RU](#)
- [Taric consultation for 84198998 BY](#)
- [Taric consultation for 84198998 RU](#)
- [Council Regulation \(EC\) No 833/2014 measures for Russia](#)
- [Council Regulation \(EC\) No 765/2006 measures for Belarus](#)
- [European Union Dual-use correlation table](#)
- [Lithuania Dual-use list](#)
- [Russia Dual-use list](#)
- [Russian Customs Act 1374](#)
- [Belarus Customs Act 700](#)



Sanctions compliance project

Alpha versija

The assistant's knowledge consists of sources related to international sanctions, dual-use goods, and other restrictions and prohibitions, with the main focus on Russia and Belarus.

Find answers to questions such as:

- Can I export 32089011 to Armenia?
- Can I import 4404200010 to Lithuania from Kazakhstan?
- Can I transport 84561110 in transit through Russia?

6. Summary on:

1. The role of associations in customs digitalisation
2. EU customs digitalisation – what to prepare for
3. AI – the potential and the dangers

Questions?

Please do not hesitate to reach out
enrika@customsclear.net or info@lcpa.lt

Thank you

