



Company **PROFILE**

CONTENT

01 WHO WE ARE

02 EPC CORE VALUES

03 WHAT WE DO

04 AUTHORISATION &
CERTIFICATION

05 WHAT MAKES US
DIFFERENT

06 SOFTWARE

07 GOOD
PRACTICE
GUIDELINES

08 PARTNERSHIP
WITH NGOs

09 PORTFOLIO

24 YEARS OF “PARTNERSHIP WITH NATURE”

EPC is a Romanian private company dedicated to providing integrated environmental consulting services. The main clients are companies with ambitious projects in fields of activity such as: road infrastructure, railways, water management, renewable energy, oil and gas, non-energy resources, river navigation, territorial planning, industry, retail and agriculture.

As an environmental consultancy, EPC is backed up by a multidisciplinary team of experts in biology, ecology, geography, engineering and geology. At the national level, EPC has the largest team of environmental consultants dedicated full time to impact assessment in projects involving SEA, EIA, AA and WFDA (Water Framework Directive Assessment).



EPC Main Figures

24 years of activity;

Annual turnover: 1.1 M Euro (2022) and 2 M Euro (2023);

66% of turnover generated by **Returning & Repeating Clients;**

1 M Euro professional liability insurance coverage & **1 M Euro** for health insurance coverage.

“Partnership with Nature”

is our slogan and we believe that such a partnership is truly possible - therefore, all our efforts are dedicated to providing our customers with solutions to reduce the environmental footprint of their activities.



PASSION

The passion for environmental impact assessment brought us together and keeps us as a united team.

FAIRNESS

We only engage in the professional activities for which we have competence, conducting them with the aim of promoting sustainability. All services are performed in accordance with the legal provisions in force and with the requirements of best practice guidelines. EPC services have the highest level of quality and accuracy.

PERSEVERANCE

We make every effort to constantly improve our knowledge and professional skills. Curiosity and sustained effort help us to constantly improve our services.

NO COMPROMISES

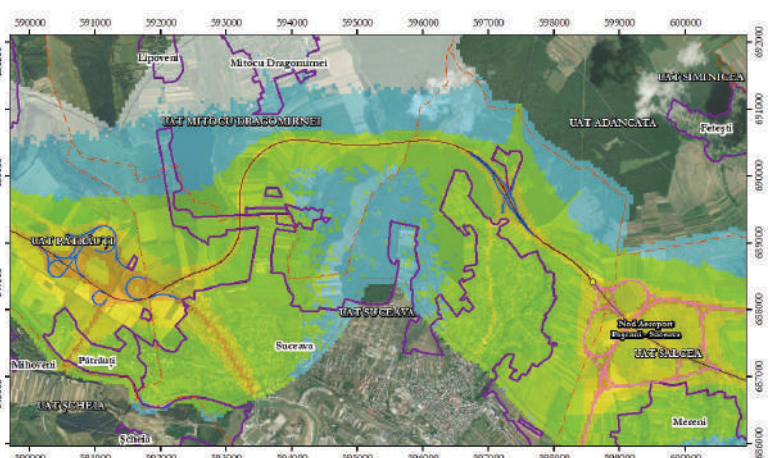
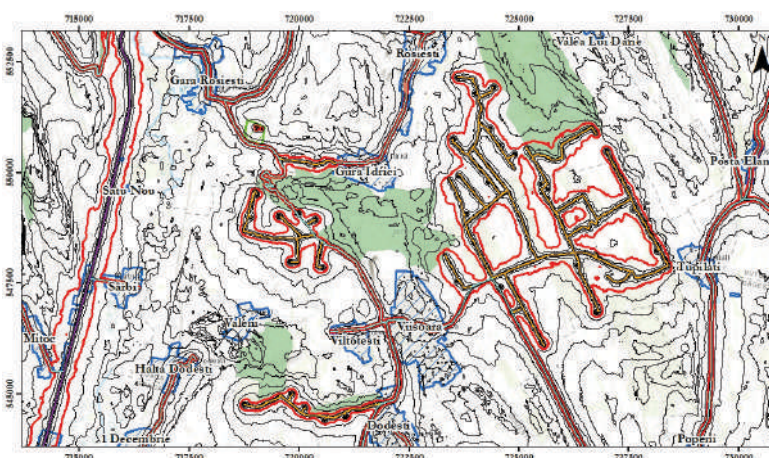
No conflicts of interest. Never around acts of corruption. We refuse to engage in projects where the omission or distortion of facts is requested in order to reach a predefined finding or result.

OUR MISSION

We offer our customers the best solutions for reducing the ecological footprint of their projects and activities.

Our clients need only one planet!

- **Permitting** for strategies, plans, and programmes (Strategic Environmental Assessment – ‘SEA’), projects (Environmental Impact Assessment – ‘EIA’) and activities (Environmental Authorisation – audits);
- Impact assessment on Natura 2000 (**Appropriate assessment – ‘AA’**);
- Water Framework Directive Assessments (**Impact on Water bodies – ‘WFDA’**);
- **Bankable** environmental assessments (IFC, EBRD, EIB);
- **Technical Assistance** for public institutions, financial institutions & NGOs;
- **Environmental Due Diligence**;
- Elaboration and implementation of **environmental / biodiversity monitoring** programmes;
- **Habitat mapping** and species inventories (biodiversity surveys);
- **Ecological reports** for green buildings;
- **Site assessments**;
- Climate change and **carbon footprint** studies;
- **Do No Significant Harm Assessments** (DNSH);
- **Biodiversity footprint** assessments;
- Design, implementation and monitoring of **Corporate Biodiversity** programmes;
- **Air quality** studies;
- **Noise mapping** and **noise studies**;
- Elaboration of technical and methodological **guidelines**;
- **Professional training** in SEA, EIA, and AA.



AUTHORISATION & CERTIFICATION

- Certified for **SEA, EIA, AA, Environmental Audits, Biodiversity Monitoring, Noise Studies, Air Quality Studies, Climate Change Studies** (National Register of Certified Environmental Experts – ARM¹);
- Certified for **Water Management Studies** and **WFD Assessments** (Environmental Ministry);
- Authorisation to conduct **environmental studies** and **monitoring for railways** (AFER²);
- Authorisation to conduct **scientific fishing** (ANPA);
- **Certified trainings** (SEA, EIA, AA) for professionals (ARM);
- **ISO 9001, ISO 14001, and ISO 45001** certified (QSCert);
- **CSR Certification** (Ecovadis).

¹ARM – Asociația Română de Mediu
(Romanian Environmental Association)

²AFER – Autoritatea Feroviară Română
(Romanian Railway Authority)



WHAT MAKES US DIFFERENT



1. **Impeccable professional reputation** as a result of applying our core values in all our activities. **Our professional credibility** is valued by private clients, public institutions, financial institutions as well as NGOs;
2. Providing all services according to the IAIA **Professional conduit and ethical responsibilities** code and the IAIA **Principles regarding the best practices** in environmental impact assessment;
3. Significant experience in providing **technical assistance for major projects** (e.g., EIB - PASSA, JASPERS);
4. **Authors of new technical guidelines** for appropriate assessment (Ministerial Orders 1679/2023 and 1682/2023);
5. Long-term **partnership** with relevant **environmental NGOs**;
6. Proven capacity to coordinate **large teams of experts** and **subcontractors**;
7. Capacity to conduct **large-scale** and **long-term monitoring** projects;
8. Good knowledge of **international** (Equator Principles, IFC) and **European** (EBRD, EIB) **best practice requirements** in environmental impact assessment and environmental monitoring;
9. Use of **professional software** and **innovative equipment** as support for the achievement of **indisputable results**.

The main professional software (permanent licence) used in evaluations:

- ArcGIS;
- Global Mapper;
- CadnaA;
- SoundPlan 2.0;
- OML Multi;
- BZ – 5298;
- Selma GIS;
- CadnaA – APL;
- 3M-DMS-2-7-152;
- WindPRO version 4.0.422
Decibel,
- Shadow, ZVI, Photomontage;
- EcoRisk View;
- IRAP-h View;
- Vortex (PVA);
- Surfer;
- Voxler;
- BWPi;
- Bat sound;
- Kaleidoscope Pro.



GOOD PRACTICE GUIDELINES

EPC has produced three best practice guidelines (covers are presented here) for road infrastructure, wind energy and small hydropower, in a project coordinated by the most representatives environmental NGOs in Romania.



The two guidelines (general and specific) replaced, in 2023, the current Methodological Guide on the appropriate assessment of the potential effects of plans or projects on protected natural areas of Community interest, approved by Order 19/2010. The contract was carried out with the National Agency for Environmental Protection (ANPM), **EPC** being the leader of the association.

PARTNERSHIP WITH NGOs

EPC is constantly involved in projects of the NGO sector. Such involvement includes **technical assistance** (e.g., BISON project), **consultancy** (e.g., services for Natura 2000 Coalition), **monitoring** (e.g., Ecological Restoration in Mahmudia, Danube Delta), **trainings** (e.g., TRANSGREEN project) or **participation as Project Partner** (e.g., SaveGREEN).



SAVEGREEN a DTP Project (INTERREG)

EPC was a Project Partner in the European funded project "SaveGREEN", a project dedicated to providing tools and guidance on the protection of ecological corridors in the Danube basin.

The Lead Partner of the project was WWF Central and Eastern Europe.



SELECTION OF RELEVANT PROJECTS

SEA

STRATEGY, PLAN, PROGRAMME	YEAR	SERVICES
Strategic Programme for the Development of Airport Infrastructure at "Henri Coandă" International Airport Bucharest	Ongoing	SEA
Urban Area Plan in Corbeanca Commune, Ilfov County	2023	SEA
Muntenia Regional Development Plan 2021-2017	2023	SEA
Romanian Flood Risk Management Plan, 2 nd cycle	2023	SEA, AA
Plan for the construction of an integrated steel factory and a rolling mill for the production of steel beams and wiring	2023	SEA
Transport Programme 2021-2027	2022	SEA, AA
National Strategy for Preventing and Combating Desertification and Land Degradation 2019-2030	2022-2023	SEA, AA
Bucharest-Ilfov Operational Programme 2021-2027	2021-2022	SEA
National Forestry Strategy 2030	2022	SEA, AA
Health Programme 2021-2027	2022	SEA
Romania-Bulgaria Interreg Programme 2021-2027	2019-2022	SEA
Mining Strategy of Romania 2017-2035	2018	SEA, AA (interrupted)
Integrated Strategy for the Sustainable Development of the Danube Delta	2015-2016	SEA, AA
Large Infrastructure Operational Programme 2014-2020	2014-2015	SEA, AA
Update of the General Urban Plan of the Lupac Commune, Caraş-Severin County	2012-2013	SEA
Update of the General Urban Plan of the Râşnov Town, Braşov County	2012-2013	SEA
Update of the General Urban Plan of the Băile Govora Town, Vâlcea County	2011	SEA
Update of the General Urban Plan of the Stoenesti Commune, Vâlcea County	2010-2011	SEA
National Management Plan for the National Portion of the International Basin of the Danube River	2010	SEA
National Management Strategy of Flood Risk for the Long and Medium Term	2009-2010	SEA
Energy Strategy of Romania 2009-2020	2009-2010	SEA
General Urban Plan of the Câmpina City, Prahova County	2009	SEA
Territorial Development Plan for the Arad County	2009	SEA
Urban Area Plan for the "Zona Valu Traian – DN3" Area	2008-2009	SEA
Rural Development National Programme 2007-2012	2007	SEA

LEGEND

SEA - Strategic Environmental Assessment

AA - Appropriate Assessment

BIODIVERSITY

PROJECT	YEAR	SERVICES
Washing machine production facility in Ulmi, Dâmbovița	Ongoing	HM, SI, BM, CB
DISMAR – Signalling system along the Danube	2023	BIA
North Drinking Water Pumping Station	2023	SI, BF
South Drinking Water Pumping Station	2023	SI, BF
Cotroceni Reservoirs	2023	SI, BF
Residential project in Corbeanca	2023	HM, SI
Glina Wastewater Treatment Plant	2022	SI, BF
Roșu Water Treatment Plant	2022	SI, BF
Arcuda Water Treatment Plant	2021	SI, BF
Crivina Water Treatment Plant	2021	SI, BF
CET Brazi	2021	SI, BF
Roșu Water Treatment Plant	2018	BA
Crivina Water Treatment Plant	2018	BA
Ulmi Water Treatment Plant	2018	BA
Natura 2000 sites in the custody of Bihor County Council	2017	HM, SI, ESV, FS
Ecological Restoration of Carasuhut area (Danube Delta)	2016	HM, SI, BM
South-West Carpathians	2015	WS
Natura 2000 sites Timișului Meadow and Macedonia Forest	2015	HM, SI, CSA, PM
Natura 2000 Hartibaciu -Tarnava Mare integrated management area	2014	BT
Natura 2000 site ROSPA0072 Siret Middle Meadow	2014	HM, SI, CSA, PM, SEA
Cozia National Park	2013	HM, SI, CSA
Oltețului Gorges Reserve	2012	HM, SI, CSA
Măcin Mountains Natural Park	2011	CCA
Ecological Restoration of Fusea area	2010	FS, BM, EIA

LEGEND

BA - Biodiversity Auditing
 BF - Biodiversity Footprint
 BIA - Biodiversity Impact Assessment
 BM - Biodiversity Monitoring
 BT - Biodiversity Trainings
 CB - Corporate Biodiversity
 CCA - Carrying Capacity Assessment
 CSA - Conservation Status Assessment

EIA - Environmental Impact Assessment
 ESV - Ecosystem Services Valuation
 FS - Feasibility Study
 HM - Habitat Mapping
 MP - Management Plan
 SEA - Strategic Environmental Assessment
 SI - Species Inventory
 WS - Wilderness Strategy

OIL & GAS

PROJECT	YEAR	SERVICES
Agigea site	Ongoing	EDD phase 2
Neptun Deep - Baseline studies for onshore biology and noise, onshore component of AA, onshore component of ESIA (biodiversity and noise)	2018 - 2022	BM, NS, AA, ESIA
Gas facilities demolition	2022	PR
123 Balta Albă gas well	2021	EIA
215 Bibești gas well	2021	EIA
Midia site	2021	EDD phase 2
22 Balta Albă Group	2019	WMTR
213 Bibești gas well	2019	PR, WMTR, EIA
122 Balta Albă gas well	2019	PR, WMTR
216 Bibești gas well	2019	PR, WMTR, EIA
214 Bibești gas well	2018	PR, WMTR, EIA
121 Balta Albă gas well	2018	PR, WMTR, EIA
Balta Albă gas supply pipeline	2017	PR, WMTR
Monitoring wells at A2, A3, A4 wells, Bordei Verde Vest	2017	WMTR
Brazi A1 gas well	2017	PR, EIA, WMTR
Injection station Bordei Verde	2017	PR, WMTR
120 Balta Albă gas well	2017	PR, WMTR
Brazi A1 well	2017	PR
Purchase of an economic operator with activities in the field of electricity and gas transport	2016	EDD
A1 Buda well	2016	WMTR
Oil facilities 6050 Tescani, 2 Tescani and 395 Cucuieti	2016	WMTR
Gas stations in Bihor, Braşov, Arad and Cluj Counties	2016	WMTR
121NV Frasin Brazi	2015	PR, WMTR
A1 Ţepu well	2015	WMTR
Năsal field	2015	WMTR
A6 Bordei Verde Vest well	2015	PR, WMTR
A7 Bordei Verde Vest well	2015	PR, WMTR
12 SRP Bisoca well abandonment	2014	PR
Socu gas facilities group	2014	PR
Park 3 Tescani, Park 12 Mihoc, Mihoc injection station	2014	GRI
Phoenix Block 2	2014	NS
2D Seismic Activities in Block 19 Adamclisi	2014	AA
Oil fields in Bacău County (73 oil wells and 6 surface facilities)	2014	EDD phase 1 and phase 2
Eight sites in Bârlad area	2013	BM
Site located in Dolj County – future gas measuring station	2013	BM
A1 Buda	2013	PR, AA, EIA
FRDP Videle Block G2 Plant	2013	AES, NS



PROJECT	YEAR	SERVICES
A2 Bordei Verde Vest well	2012	PR, WMTR
A1 Cudalbi	2012	PR, WMTR
Well 16, Amara oil field	2011	GRI
1A Gura Șuții well	2011	PR
A4 Bordei Verde Vest well	2013	PR, WMTR
A3 Bordei Verde Vest well	2013	EIA
A1 Dinaș group	2013	PR, WMTR
31 Strâmba group expansion	2013	PR
Moinesti oil field – Cucuieti, Mihoc, Tescani perimeters	2013	WMTR
Seitin injection well	2013	WMTR
Cudalbi 1 group	2013	PR
Nadalci 1 group	2012	PR
A1 Iecea Mare well	2012	PR
A1 Nadlac well	2012	PR, WMTR, EIA
111 Balta Albă gas well	2012	PR, AA, EIA
209 Gheboiaia well	2012	PR, WMTR
A2 Bordei Verde Vest well	2012	PR, WMTR
A1 Cudalbi	2012	PR, WMTR
Well 16, Amara oil field	2011	GRI
1A Gura Șuții well	2011	PR
A1 Năsal well	2011	PR
32 Tetoiu group	2011	PR
A1 Bordei Verde Vest well	2011	PR, WMTR
75 Tomnatic group	2011	PR
1A Gura Șuții well	2011	WMTR
219 Ghergheasa injection well	2011	WMTR
208 Gheboiaia well	2011	WMTR
Well 1, Șeitin oil field, Arad County	2010	EDD phase 2
Environmental Due Diligence reports for 12 oil fields	2010	EDD
Drilling of Socu 1 gas well	2008	EIA

LEGEND

AA - Appropriate assessment

AES - Air emissions study

BM - Biodiversity monitoring

EDD - Environmental Due Diligence

EIA - Environmental Impact Assessment

GRI - Geological report of investigation and assessment of pollution of the geological environment

NS - Noise study

PR - Presentation report

WMTR - Water Management Technical Report

INFRASTRUCTURE

PROJECT	YEAR	SERVICES
Cluj Subway – design & execution	Ongoing	EMP, BM, EM, EIA, EMC
Făgăraș–Sibiu motorway – design&execution	Ongoing	EMP, BM, EM, EIA, EMC
Cluj-Napoca – Oradea – Episcopia Bihor railway – design stage	Ongoing	EMP, EIA, BM, EM
Caransebeș–Timișoara railway - design stage	Ongoing	EMP, EIA, BM, EM
A0 motorway (Bucharest ring road) – design&execution	Ongoing	EMP, EIA, BM, EMC
București–Roșiori–Craiova railway	Ongoing	MCA, CCVRA, BM, AA, EIA, EMP
Fast Danube	Ongoing	EIA, AA
Dej–Bistrița motorway	Ongoing	MCA, CCVRA, BM, AA, WFDA, EIA, EMP
Baia Mare–Dej motorway	Ongoing	MCA, CCVRA, BM, AA, WFDA, EIA, EMP
Suceava–Siret motorway	Ongoing	MCA, CCVRA, BM, AA, WFDA, EIA, EMP
Craiova – Târgu Jiu motorway	Ongoing	MCA, CCVRA, BM, AA, EIA, EMP
Constanța–Tulcea motorway	Ongoing	MCA, CCVRA, BM, AA, WFDA, EIA, EMP
Bacău–Piatra Neamț motorway	Ongoing	MCA, CCVRA, BM, AA, WFDA, EIA, EMP
Țișța–Albița motorway	Ongoing	MCA, CCVRA, BM, AA, WFDA, EIA, EMP
Pașcani–Suceava motorway	2023	MCA, CCVRA, BM, AA, WFDA, EIA, EMP
Tramway infrastructure & rolling stock	2023	CF, CCVRA, DNSH
Water and wastewater infrastructure in Vaslui County	2023	AA
Constanța–Mangalia railway	2023	MCA, CCVRA, BM, AA, EIA, EMP
București–Giurgiu railway	2023	MCA, CCVRA, BM, AA, EIA, EMP
Târgu Mureș–Târgu Neamț motorway	2022, 2023	MCA, CCVRA, BM, AA, WFDA, EIA, EMP
Bacău–Pașcani motorway	2022	MCA, CCVRA, NS, BM, AA, WFDA, EIA, EMP
Constanța harbour railway infrastructure	2022	MCA, CCVRA, EIA, EMP
Water and wastewater infrastructure in Iași County	2022	AA, EIA
Satu Mare–Oar express road	2021	MCA, CCVRA, EIA, EMP
Cluj-Napoca–Oradea–Episcopia Bihor railway line (FS phase)	2021	MCA, CCVRA, NS, BM, AA, WFDA, EIA, EMP
Water and wastewater infrastructure in Ilfov, Ialomița and Giurgiu Counties (Euro Apavol)	2021	MCA, CCVRA, BM, AA, EIA, FS
Craiova – Pitești express road	2020	BM, AA, EIA
Bacău Bypass	2020	AA review
Sibiu–Pitești motorway	2020	AA review



PROJECT	YEAR	SERVICES
Water and wastewater infrastructure in Timiș County	2019	FS, CCVRA, EIA
Arad Bypass	2018	EIA
Sibiu–Pitești motorway	2017	MCA, CCVRA, BM, AA, EIA, EMP
Water and wastewater infrastructure (RAJA SA, Constanța County)	2017	AA

LEGEND

AA - Appropriate assessment

BM - Biodiversity monitoring

CCVRA - Climate Change Vulnerability and Risk Assessment

CF - Carbon Footprint

DNSH - "Do No Significant Harm" Assessment

EIA - Environmental Impact Assessment

EM/EMC - Environmental monitoring/ during construction

EMP - Environmental Management Plan

FS - Feasibility Study

MCA - Multicriteria analysis (environmental criteria)

NS - Noise study

WFDA - Water Framework Directive Assessment

RENEWABLES

LOCATION	TYPE	YEAR	CAPACITY	SERVICES
Chirnogeni, Constanța	Wind	ongoing	>300 MW	SEA, BM, AA, ESIA
Bărăganu, Constanța	Wind	ongoing	>300 MW	SEA, BM, AA, ESIA
Independența, Constanța	Wind	ongoing	>100 MW	SEA, BM, AA, ESIA
Multiple locations, Romania	Solar	2021-2025	Confidential	SEA, BM, AA, ESIA
Dumesti, Iași	Wind	2022	Confidential	EDD
Bucșani	Solar	2022-2323	Confidential	ESIA, SEP, ESMP
Roșiești, Vaslui	Wind	2022-2023	Confidential	ESIA
Dorobanțu, Constanța	Wind	2021	45 MW	EA
Babadag, Tulcea	Wind	2014-2020	Confidential	MRO
România	MHC	2019	>100 MW	EIA/AA, infringement procedure
Mavrodin, Teleorman	Solar	2018	4.43 MW	AM
Reci, Covasna	Solar	2018	Confidential	AM
Crucea, Constanța	Wind	2018	108 MW	AM
Sacherstița, Caraș-Severin	MHC	2017 - 2018	2,5 MW	MRO, EIA
Băuțar, Caraș-Severin	MHC	2017	1 MW	MRO, EIA
Plandiste, Serbia	Wind	2016	Confidential	EDD
Kosava, Serbia	Wind	2015	Confidential	EDD
Babadag, Tulcea	Wind	2014-2019	Confidential	MRO
Gemenele, Brăila	Wind	2014	Confidential	FPD, SZ
Ulm, Brăila	Solar	2013	2 MW	EIA
Drăgănești, Galați	Solar	2013	12,9 MW	EIA
Mavrodin, Teleorman	Solar	2013	5 MW	EIA
Roșorii de Vede, Teleorman	Solar	2013	7 MW	EIA
Taiwan	Wind	2013-2015	Confidential	EDD
Tafila, Iordania	Wind	2013	117 MW	BM, EIA
Țirgușor, Constanța	Wind	2013	27 MW	EDD
T. Vladimirescu, Brăila	Wind	2013	93 MW	BM, EA, EIA
Sânnicolau Mare, Timiș	Solar	2012	Confidential	EIA
Bordușani, Ialomița	Solar	2012	4,9 MW	EIA
Băneasa, Constanța	Wind	2012 - 2014	Confidential	BM, SEA, EIA, AA
Topraisar, Constanța	Wind	2012 - 2014	Confidential	BM, SEA, EIA
Mihai Viteazu, Constanța	Wind	2012 - 2014	~ 60 MW	BM, SEA, EIA, AA
Scorțaru Nou	Wind	2012	Confidential	SZ, SU, MP
Gemenele, Brăila	Wind	2012	~ 50 MW	EA
Scorțaru, Brăila	Wind	2012	~ 10 MW	EIA



LOCATION	TYPE	YEAR	CAPACITY	SERVICES
Chirnogeni, Constanța	Wind	2012	80 MW	EDD
Făcăeni, Ialomița	Wind	2012	52 MW	EDD
Tongyuan, Taiwan	Wind	2012	~ 50 MW	EDD
Pecineaga, Constanța	Wind	2012	~ 100 MW	TTRA
Gemenele, Brăila	Wind	2012	~ 50 MW	TTRA
Racovițeni, Buzău	Wind	2012	40 MW	TTRA
Mireasa, Constanța	Wind	2012	57 MW	TTRA
Topleț, Caraș Severin	Wind	2012	~ 100 MW	EDD
Stâlpu, Buzău	Wind	2012	120 MW	EDD
Frumușița, Galați	Wind	2012	9 MW	EDD
Babadag, Tulcea	Wind	2011	~ 40 MW	EDD
Independența, Galați	Wind	2011	> 200 MW	EDD
Pechea, Galați	Wind	2011	8 W	TTRA
Pantelimon, Constanța	Wind	2011	150 MW	EDD
Sălbatica, Tulcea	Wind	2011	140 MW	TTRA
Săcele, Constanța	Wind	2011	34 MW	EDD
Bărăganu, Constanța	Wind	2010 - 2012	98 MW	BM, EIA
Tortomanu, Constanța	Wind	2010	6 MW	TTRA
Poarta Albă, Constanța	Wind	2010	~100 MW	BM, SEA, EIA
Dorobanțu, Constanța	Wind	2010	54 MW	EDD, MRC, EA
Pecineaga, Constanța	Wind	2009	6 MW	TTRA
Peștera, Ciocârlia, Medgidia Constanța	Wind	2009	114 MW, 189 MW, 33 MW	EDD
Cogealac, Constanța	Wind	2009	600 MW	EDD, TTRA
Fântânele, Constanța	Wind	2008 - 2012		EDD, TTRA, EIA, MRC, EA
Sărulești, Călărași	Biodiesel	2008	5000 t/year	EIA
Săhăteni, Buzău	Biodiesel	2008	2000 l/day	EIA
Valea Nucarilor, Tulcea	Wind	2007	N/A	EDD

LEGEND

AA - Appropriate assessment

AM - Environmental Audit

BM - Biodiversity monitoring (pre-construction)

EA - Environmental Authorisation

EDD - Environmental Due Diligence

EIA - Environmental Impact Assessment

MRC - Environmental monitoring (during construction)

MRO - Biodiversity monitoring (during operation)

SEA - Strategic Environmental Assessment



SZ - Noise Study

SU - Shadow flicker study

TTRA - Technical and technological risk assessment

TECHNICAL ASSISTANCE

PROJECT	YEAR
JASPERS – Advisory support to waste management projects in environmental and climate fields	Ongoing
JASPERS Support – Climate proofing and its integration in projects EIAs, Do No Significant Harm principle and on the quality of the EIA and AA for water, floods and disaster risk management	2023
EIB – Support for compliance with Natura 2000 rules for infrastructure projects	2022
JASPERS – Assistance to analyse the documentation supporting the environmental assessments for projects targeting i) drinking water supply and distribution and ii) wastewater collection and treatment in 2022	2022
JASPERS – Assistance to analyse the documentation supporting the environmental assessments for projects targeting i) drinking water supply and distribution and ii) wastewater collection and treatment in 2021	2021
Support for the Managing Authority of Large Infrastructure Operational Programme (MA LIOP) to answer to clarification requests from European Commission regarding environmental assessment for major projects to be financed through LIOP	2020
JASPERS – Assistance to analyse the documentation supporting the environmental assessments for projects targeting i) drink water supply and distribution and ii) wastewater collection and treatment	2020
Ministry of Environment – Impact assessment of the construction and exploitation of 17 small hydropower plants located on mountain water bodies, in relation to the Habitats and Birds Directives and the WFD (study elaborated as support for the Infringement procedure)	2019
Ministry of Environment – Methodology regarding the rules and financing sources established/ identified for the application of the "Polluter pays" principle	2018
EIB / JAPERS - review of Appropriate Assessment documentation – Macedonia projects	2017
EIB / JAPERS - review of Appropriate Assessment documentation – French, Greek and Polish projects	2017
Rehabilitation of Border-Curtici-Simeria railway – Sections 2A and 2B – Technical assistance for the verification of the quality of services and works related to environment	2017
Ministry of Waters and Forests – Study on solutions to ensure the continuity of watercourses for biodiversity protection in sections where there are performed hydro technical works creating hydraulic falls	2016
Technical Assistance for Project management for Bucharest Wastewater treatment plant, Glina – Phase II together with rehabilitation works for wastewater collectors and Dâmbovița Cassette	2012
Technical assistance for support in project management and public awareness services within the project "Integrated waste management system in Sălaj County"	2012



Calea Floreasca 60, 7th floor,
Bucharest, Romania
Tel/Fax: 021.33.55.195
office@epcmediu.ro